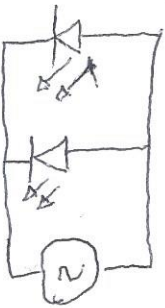
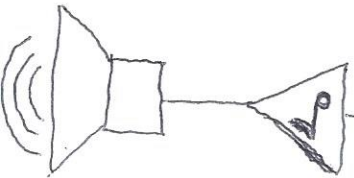
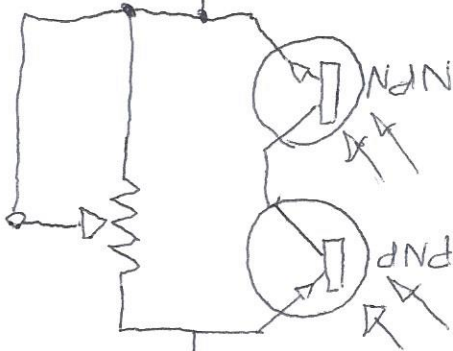
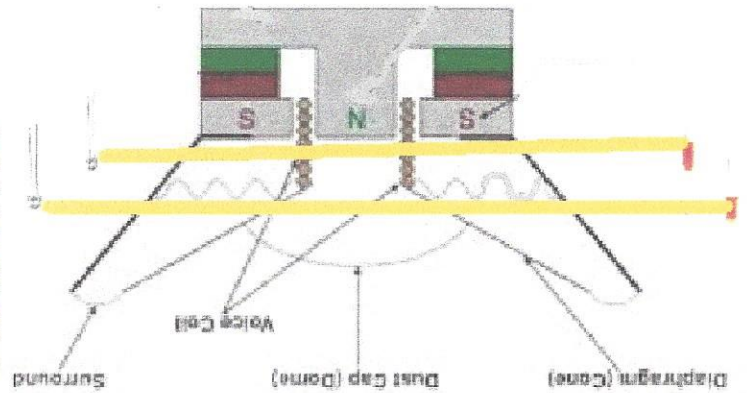


MINI DSP HD
LFE CHANNEL

output



Cone pushed out to >90 percent of positive Xmech, unblocking light from upper LED to upper phototransistor.
NOTES:
1. Lightpaths are offset from center of cone.
2. LEDs and phototransistors are actually mounted on frame/basket, not as depicted!



Cone pulled in to >90 percent of negative Xmech, blocking light from lower LED to lower phototransistor.
NOTES:
1. Lightpaths are offset from center of cone
2. LEDs and phototransistors are actually mounted on frame/basket, not as depicted!

