

# 1. Table of Contents (This Page)

Created on Wed Feb 1 18:10:45 2017

2. component

3. solder

4. plated-drill

5. unplated-drill

6. componentmask

7. soldermask

8. topsilk

9. bottomsilk

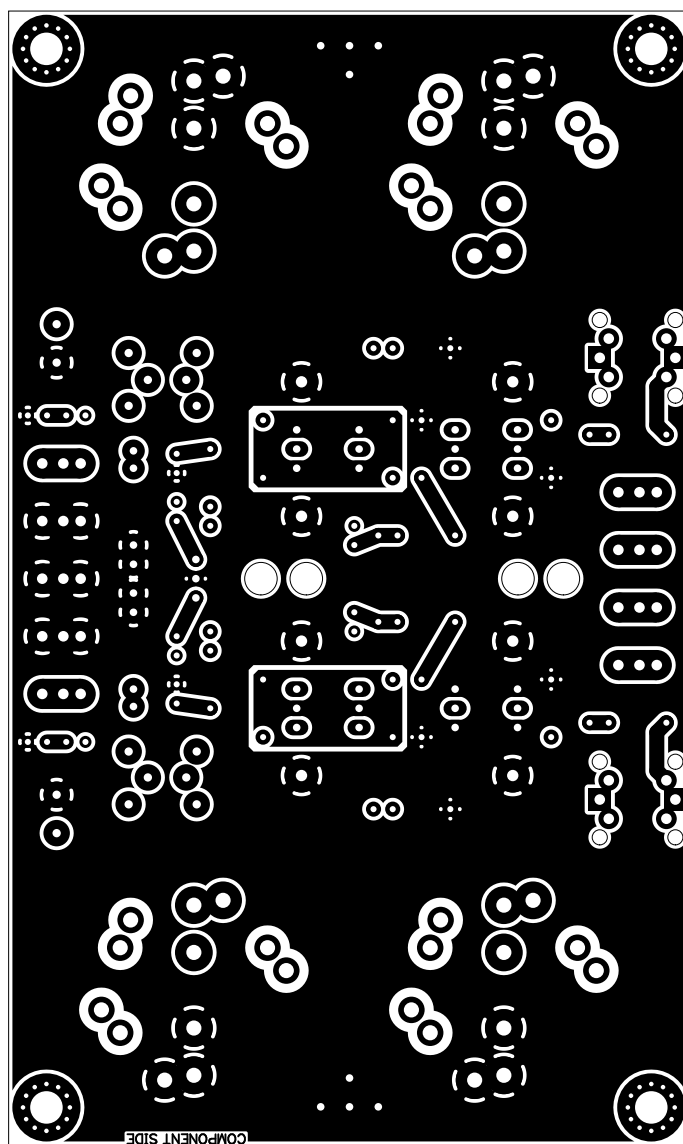
10. toppaste

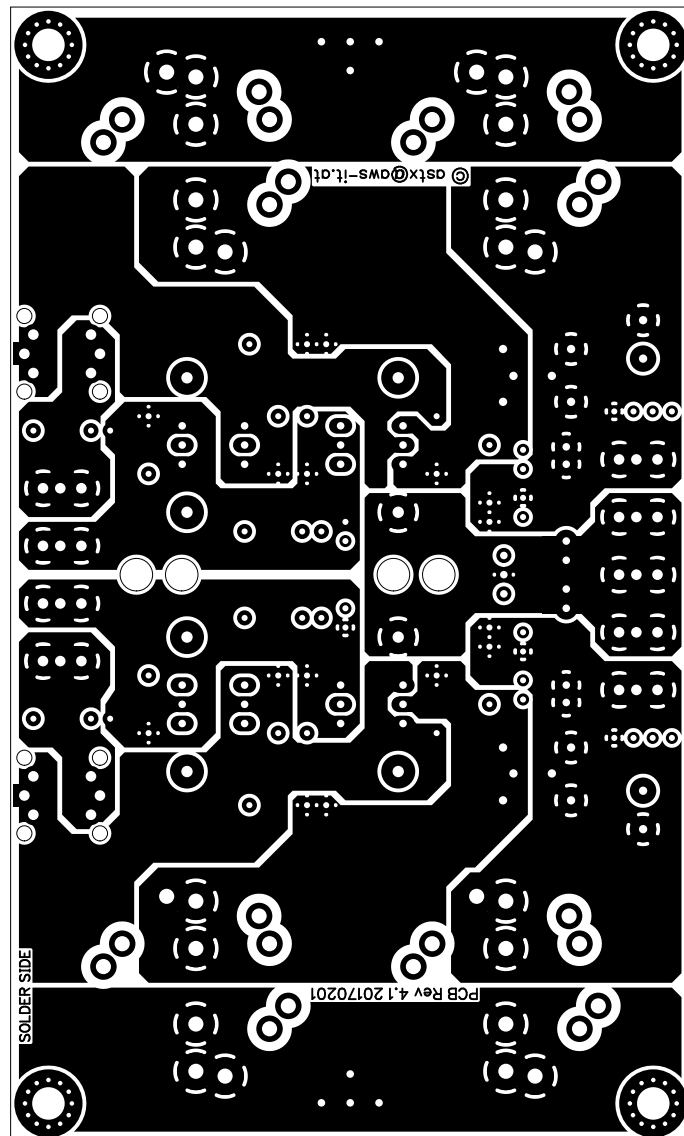
11. bottompaste

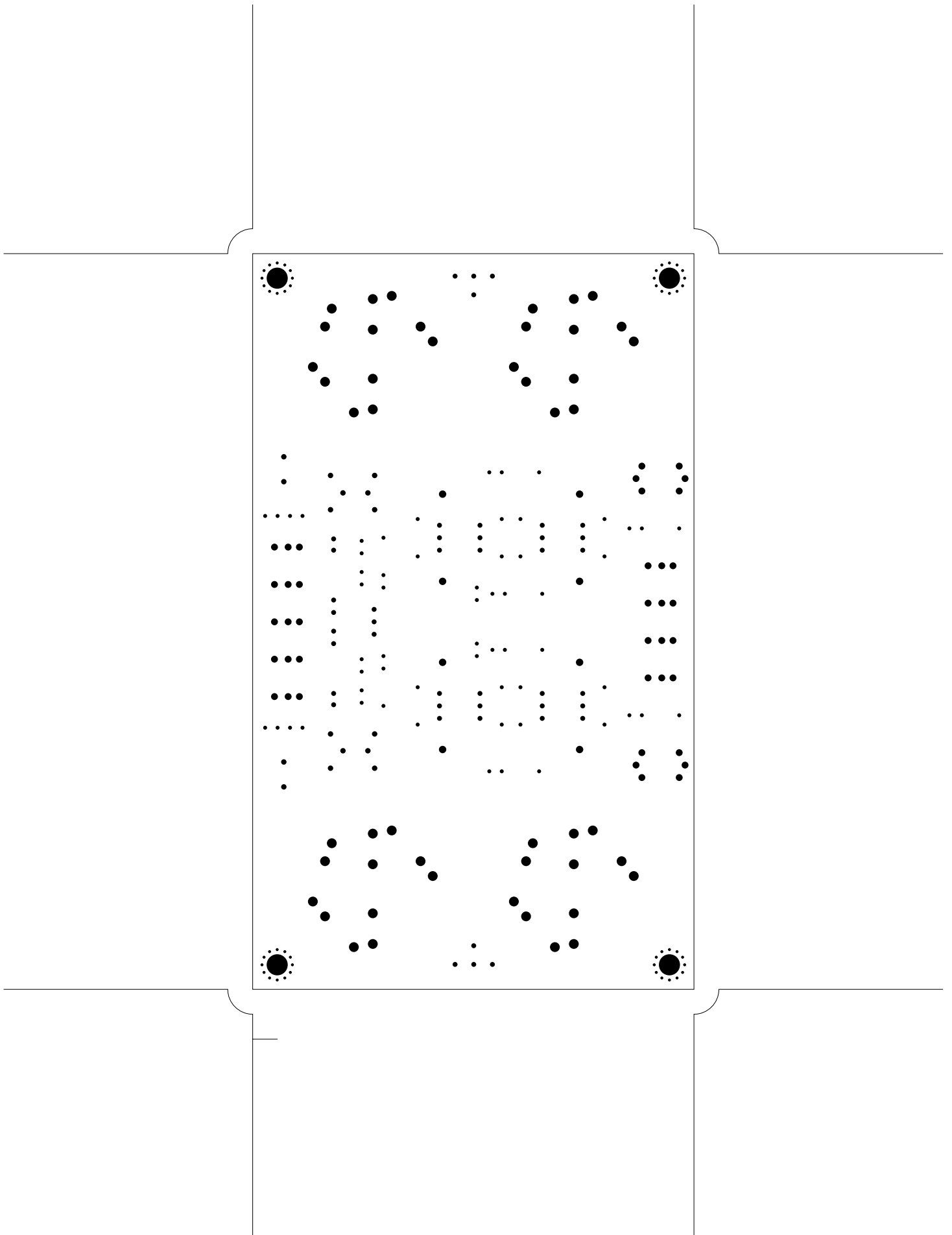
12. topassembly

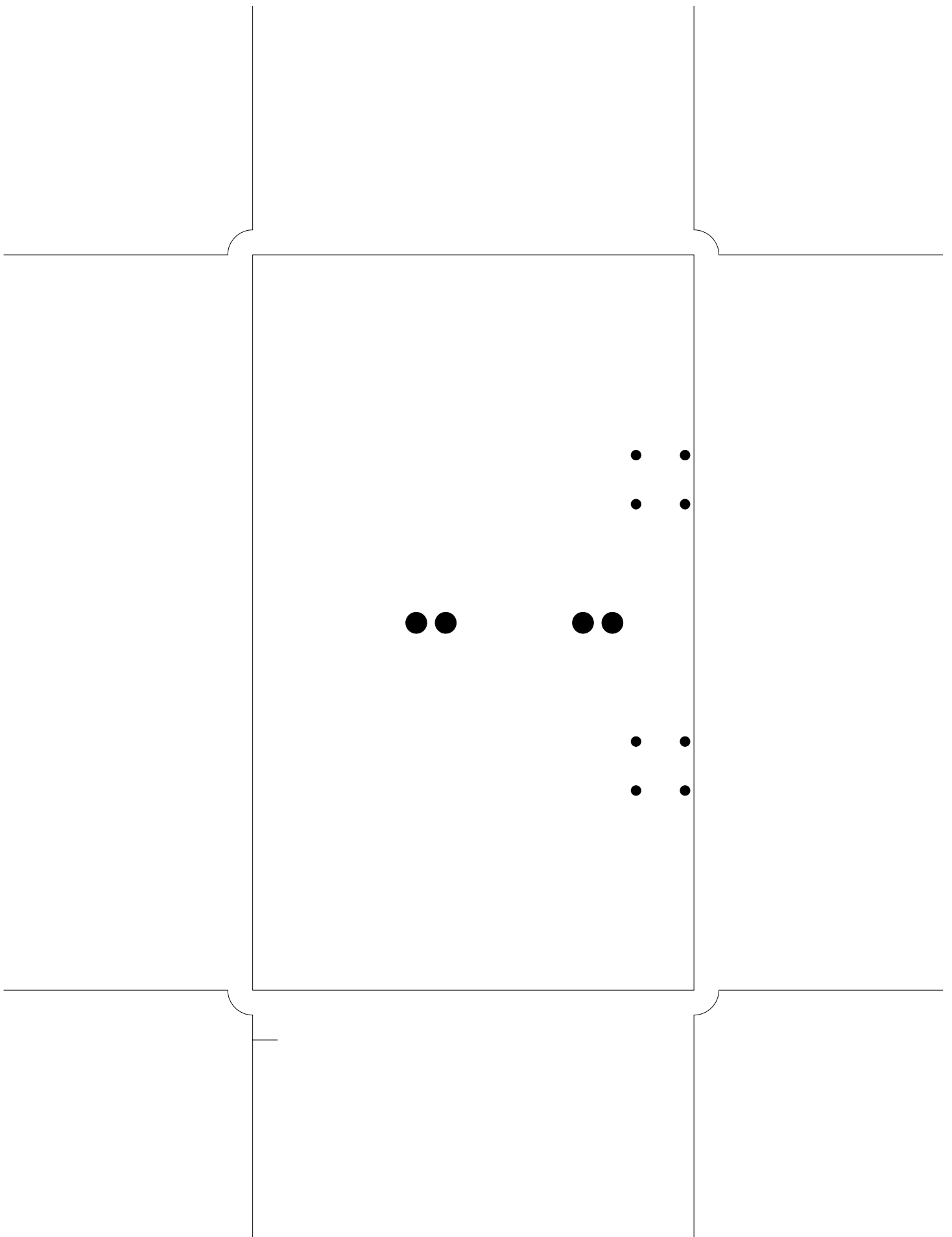
13. bottomassembly

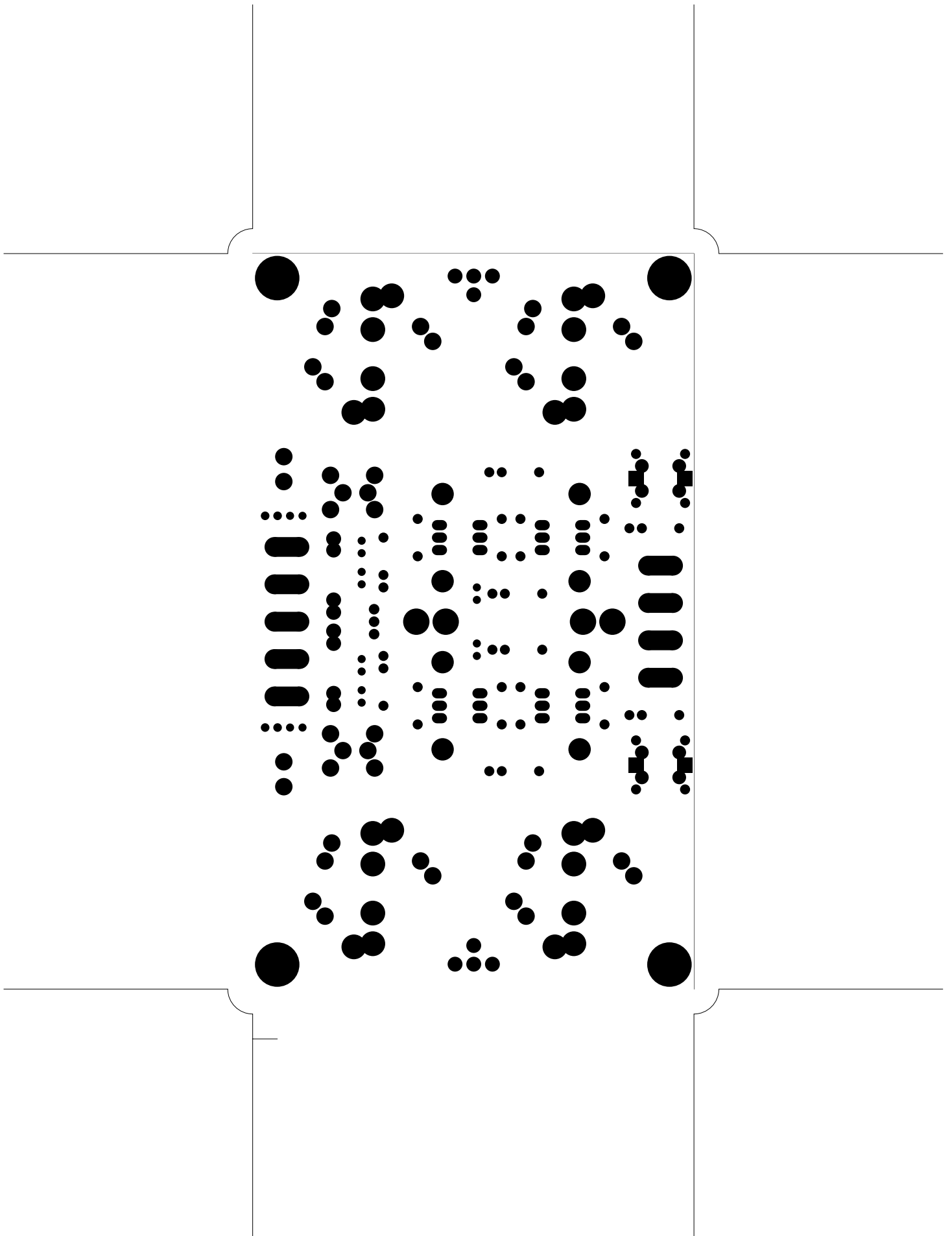
14. fab

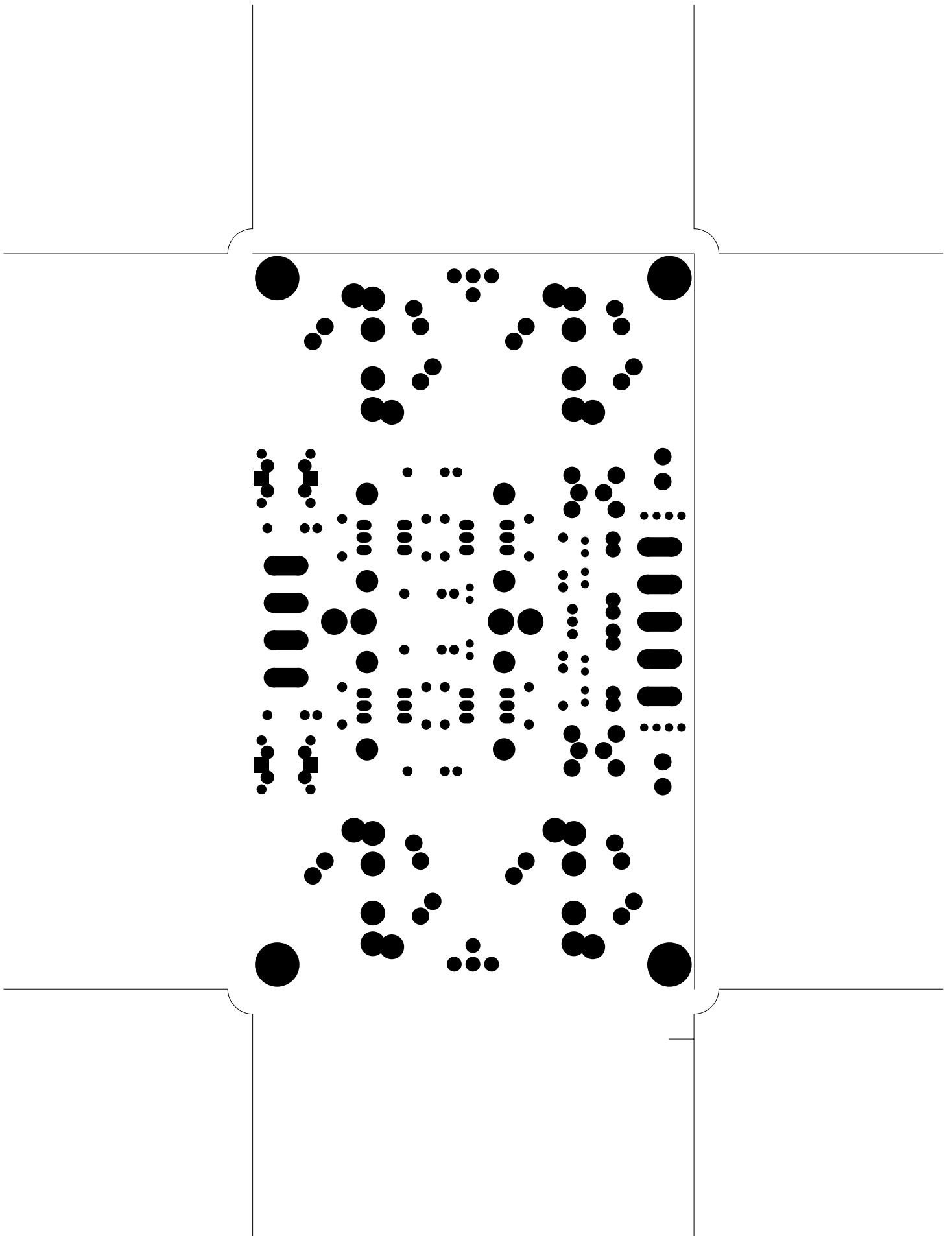


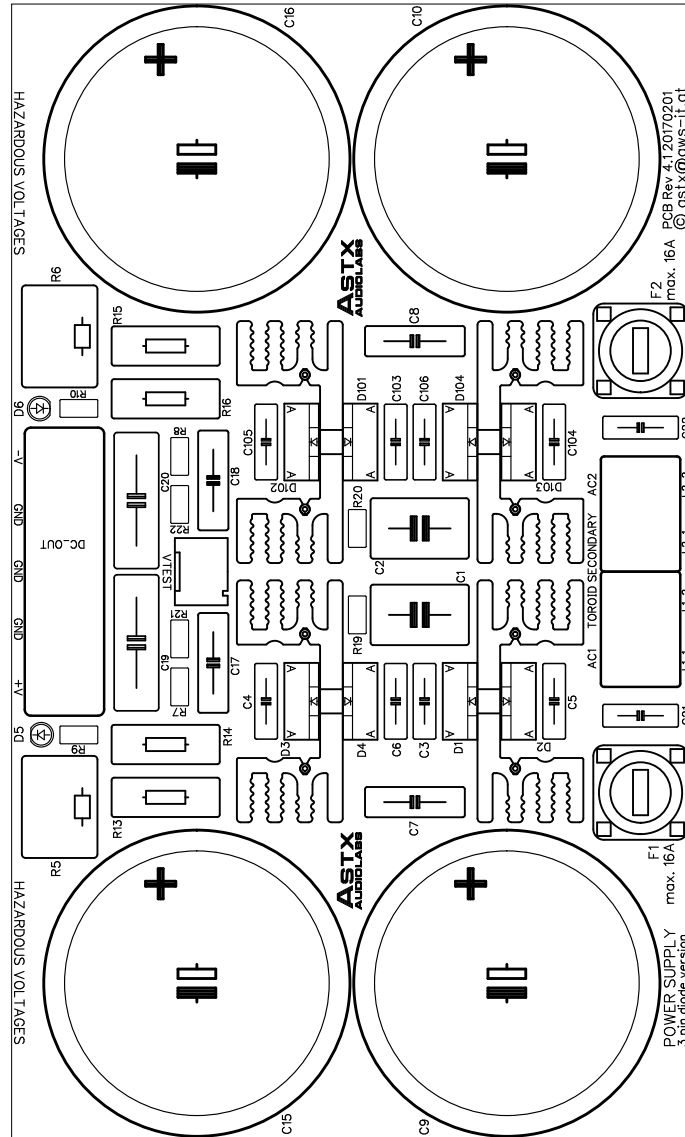




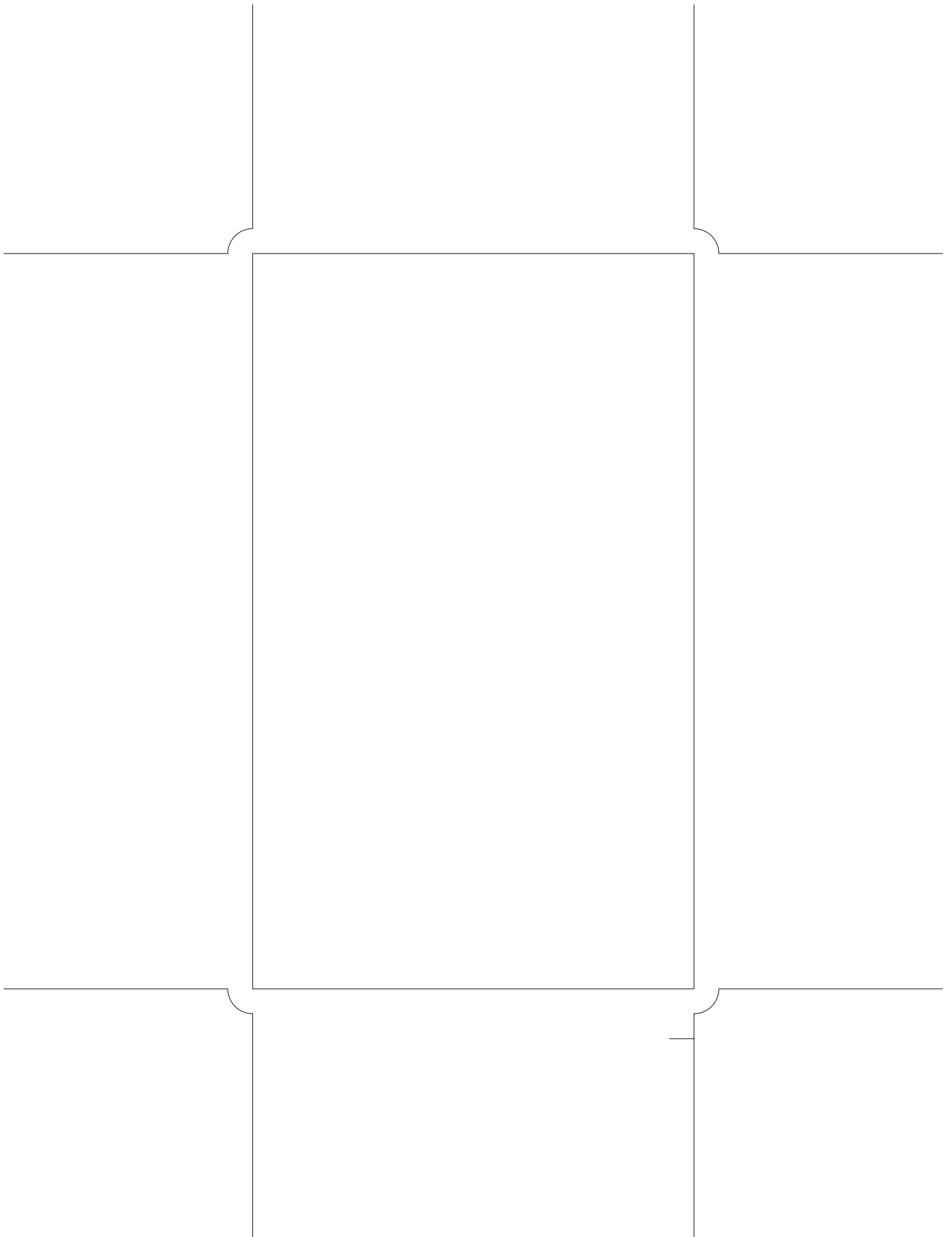


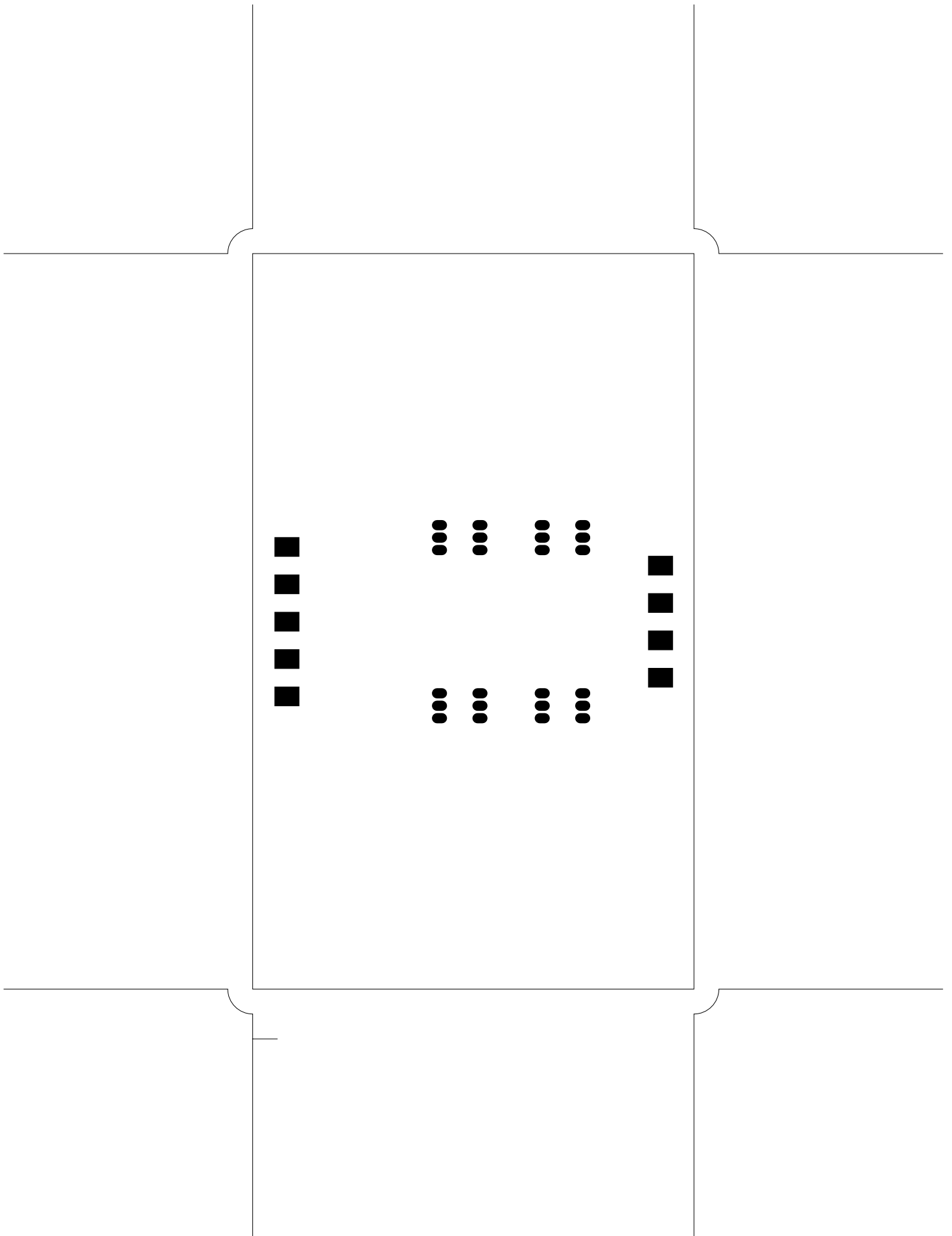


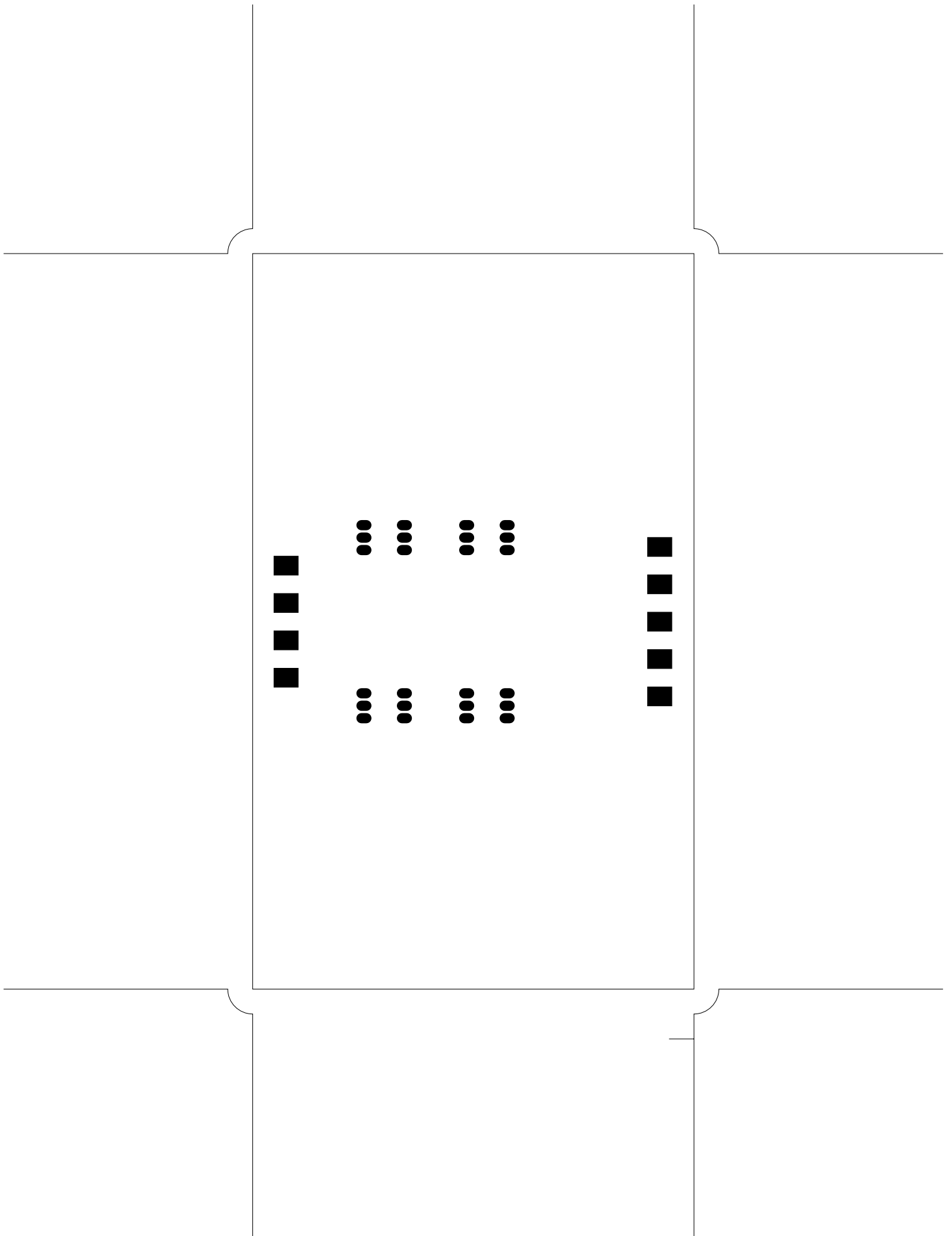


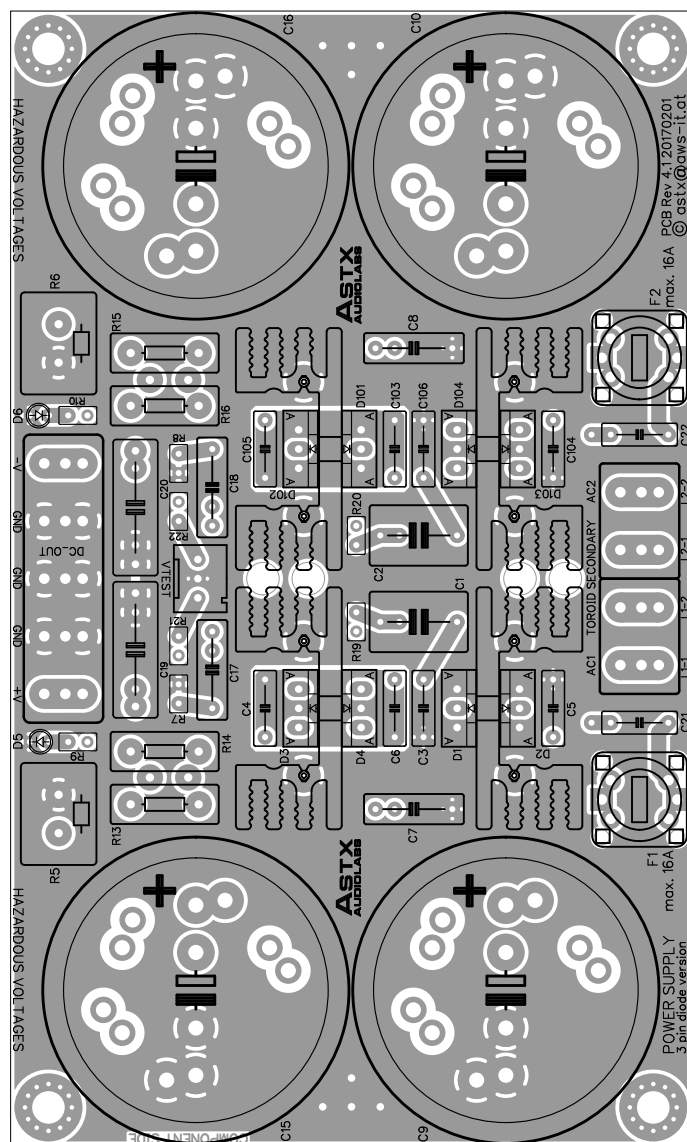


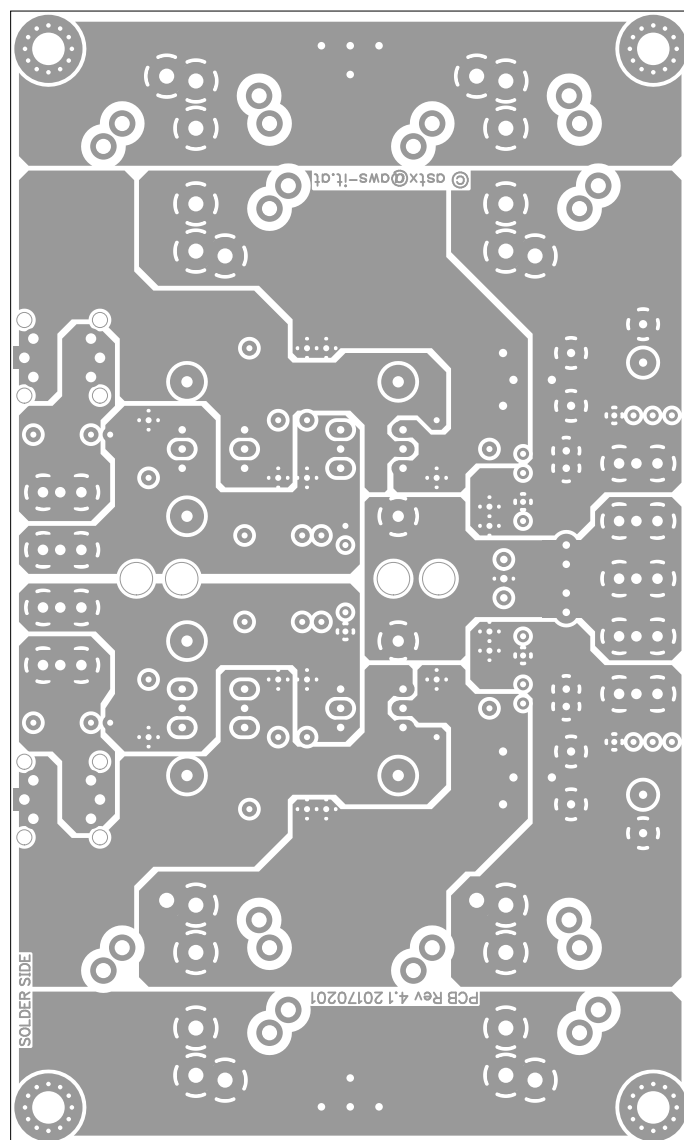








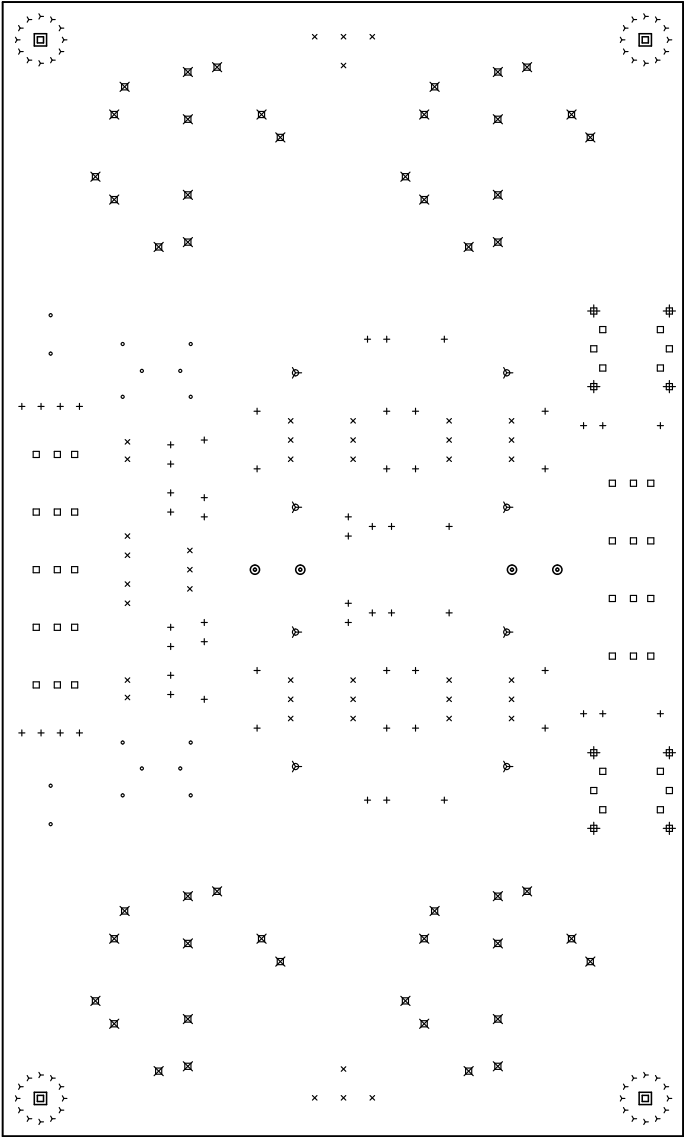




There are 8 different drill sizes used in this layout, 278 holes total

Symbol	Diam. (Inch)	Count	Plated?
γ	0.024	48	YES
+	0.031	60	YES
x	0.039	43	YES
•	0.043	16	YES
□	0.055	39	YES
▽	0.059	8	YES
⊕	0.079	8	NO
⊗	0.079	48	YES
⊙	0.170	4	NO
⊠	0.170	4	YES

Title: (unknown) - Fabrication Drawing  
Author: astx@aws-it.at  
Date: Mit 01 Feb 2017 17:04:45 GMT UTC  
Maximum Dimensions: 5905.511811 mils wide, 3543.307087 mils high



Board outline is the centerline of this 8.000000 mil rectangle - 0,0 to 5905.511811,3543.307087 mils