

1. Table of Contents (This Page)

Created on Wed Feb 1 18:10:22 2017

2. component

3. solder

4. plated-drill

5. unplated-drill

6. componentmask

7. soldermask

8. topsilk

9. bottomsilk

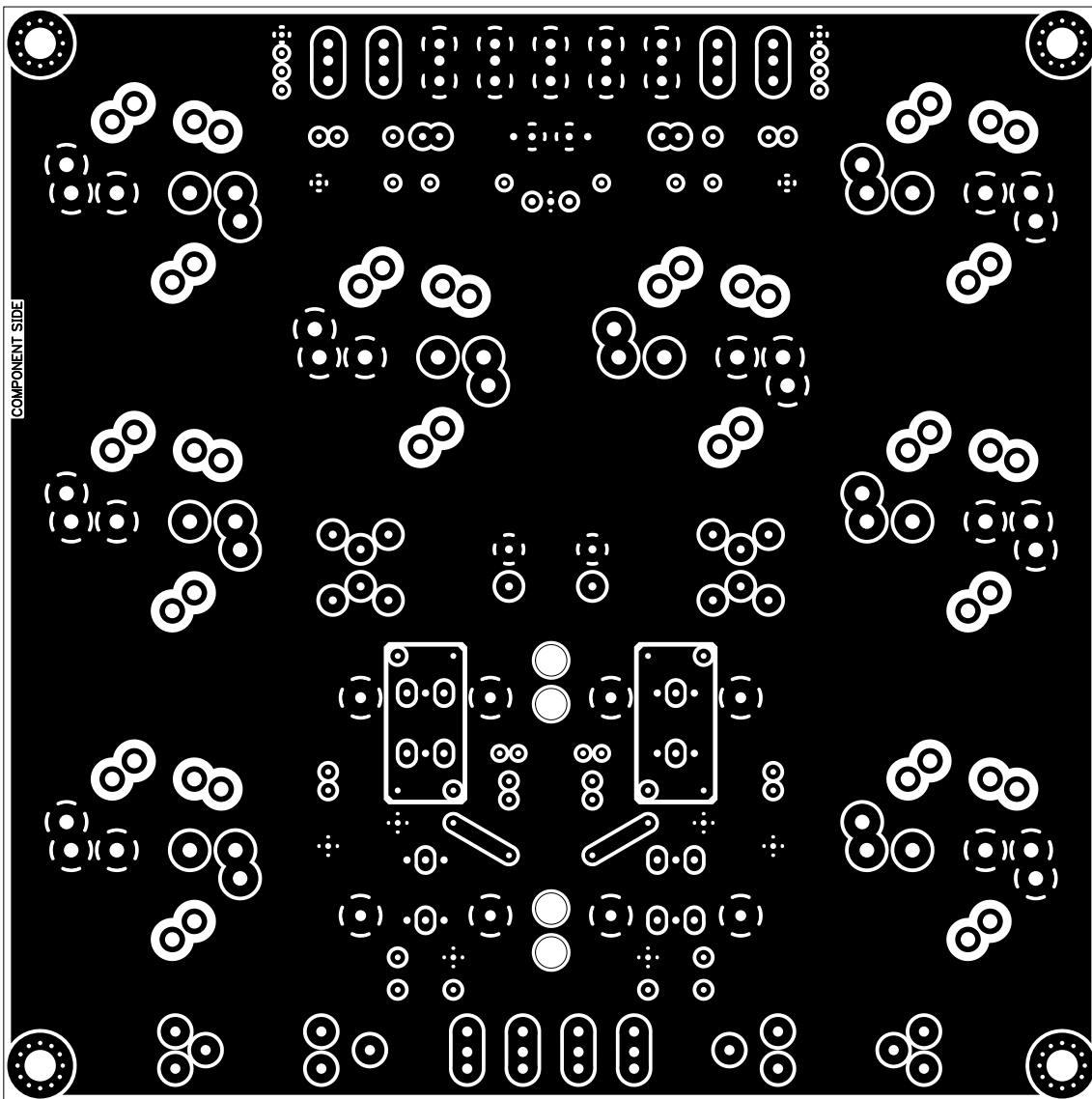
10. toppaste

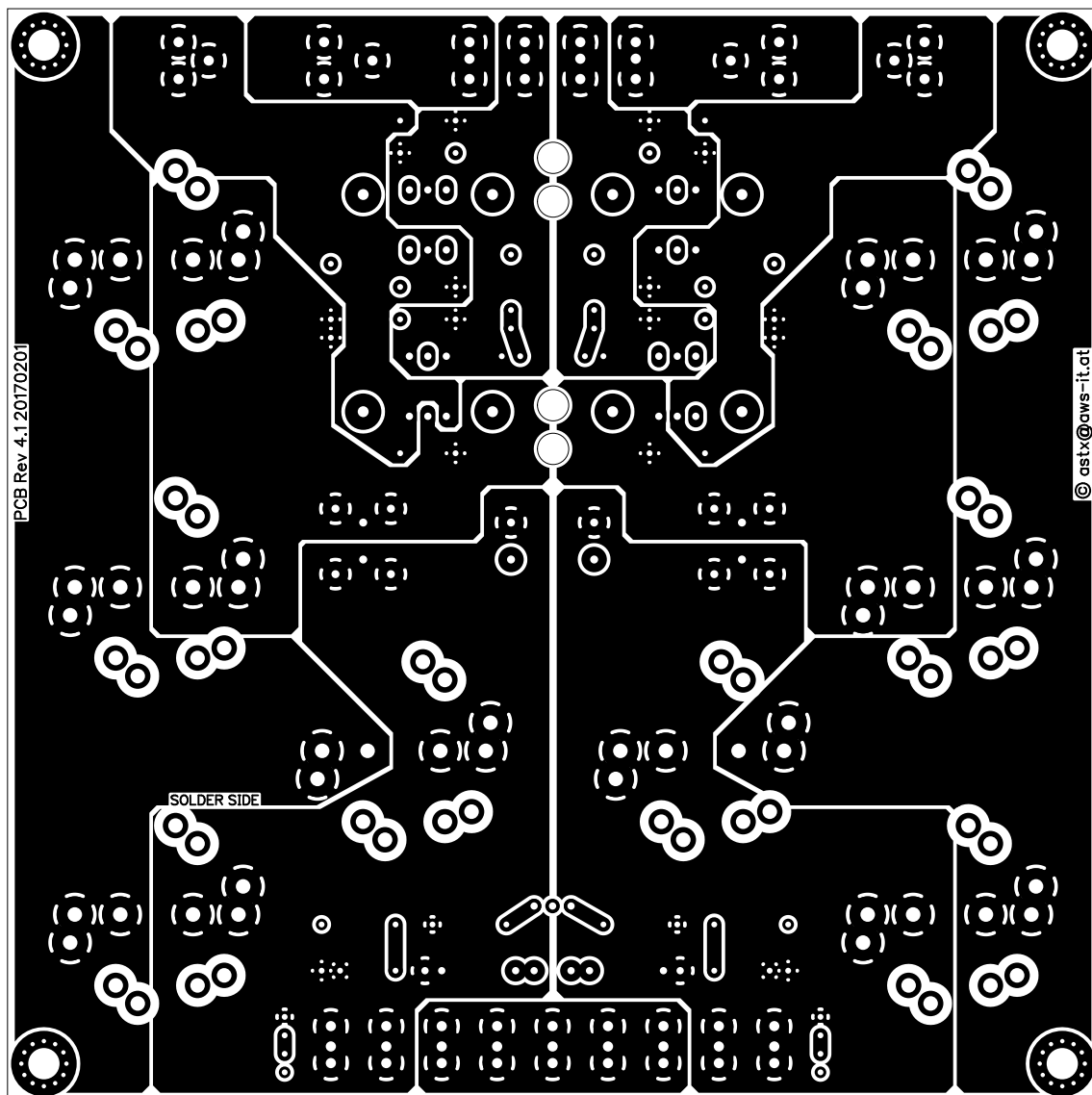
11. bottompaste

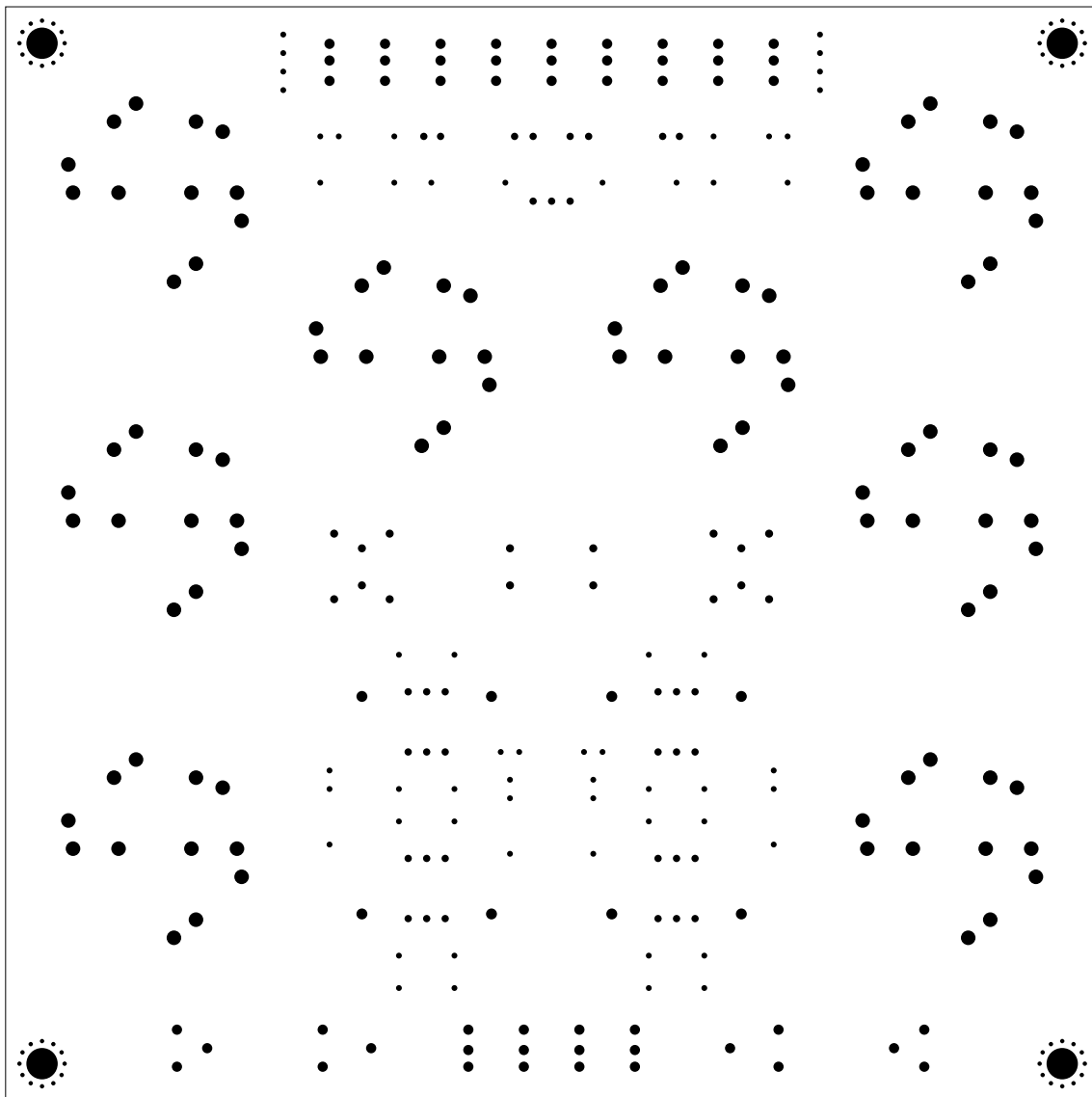
12. topassembly

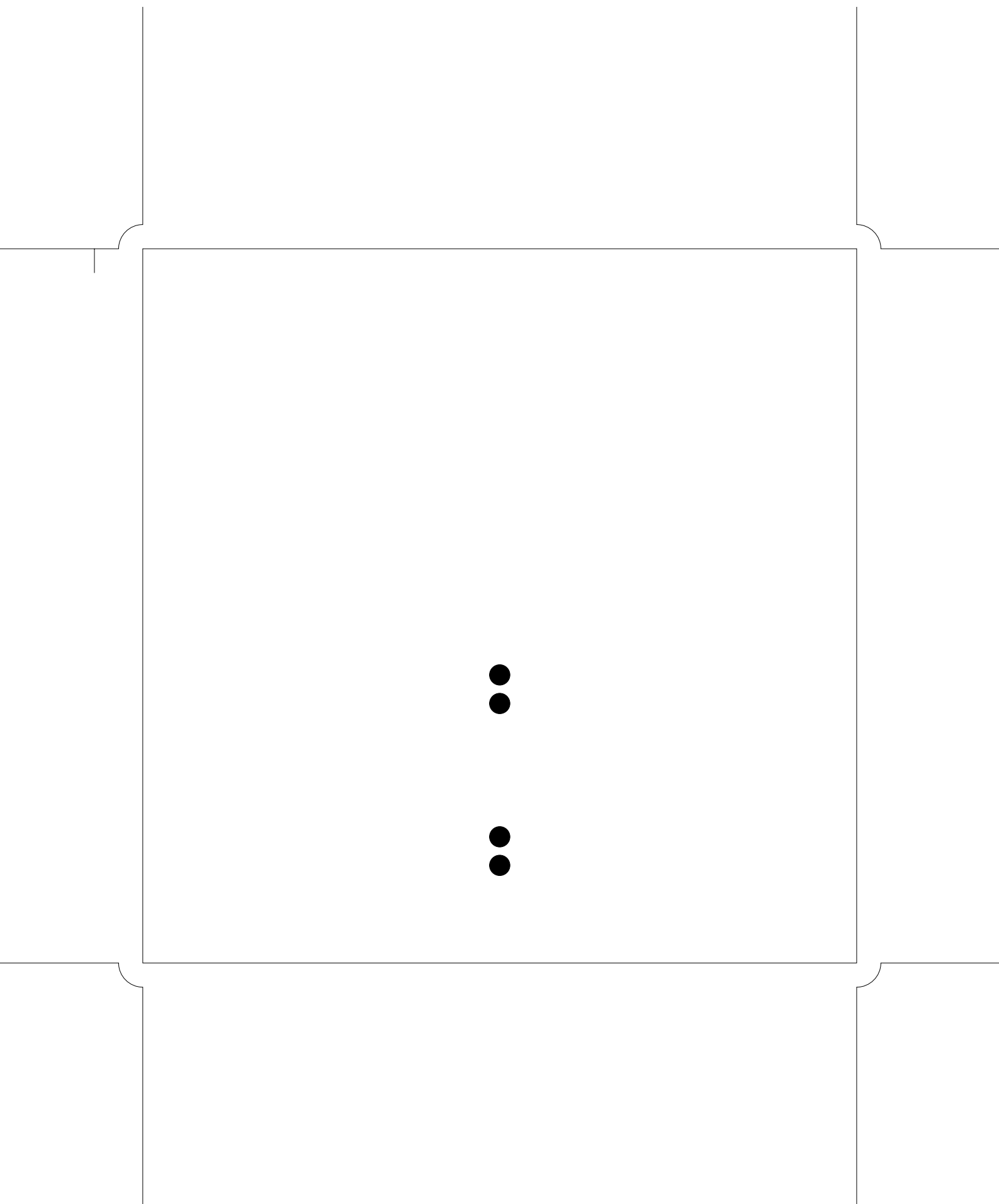
13. bottomassembly

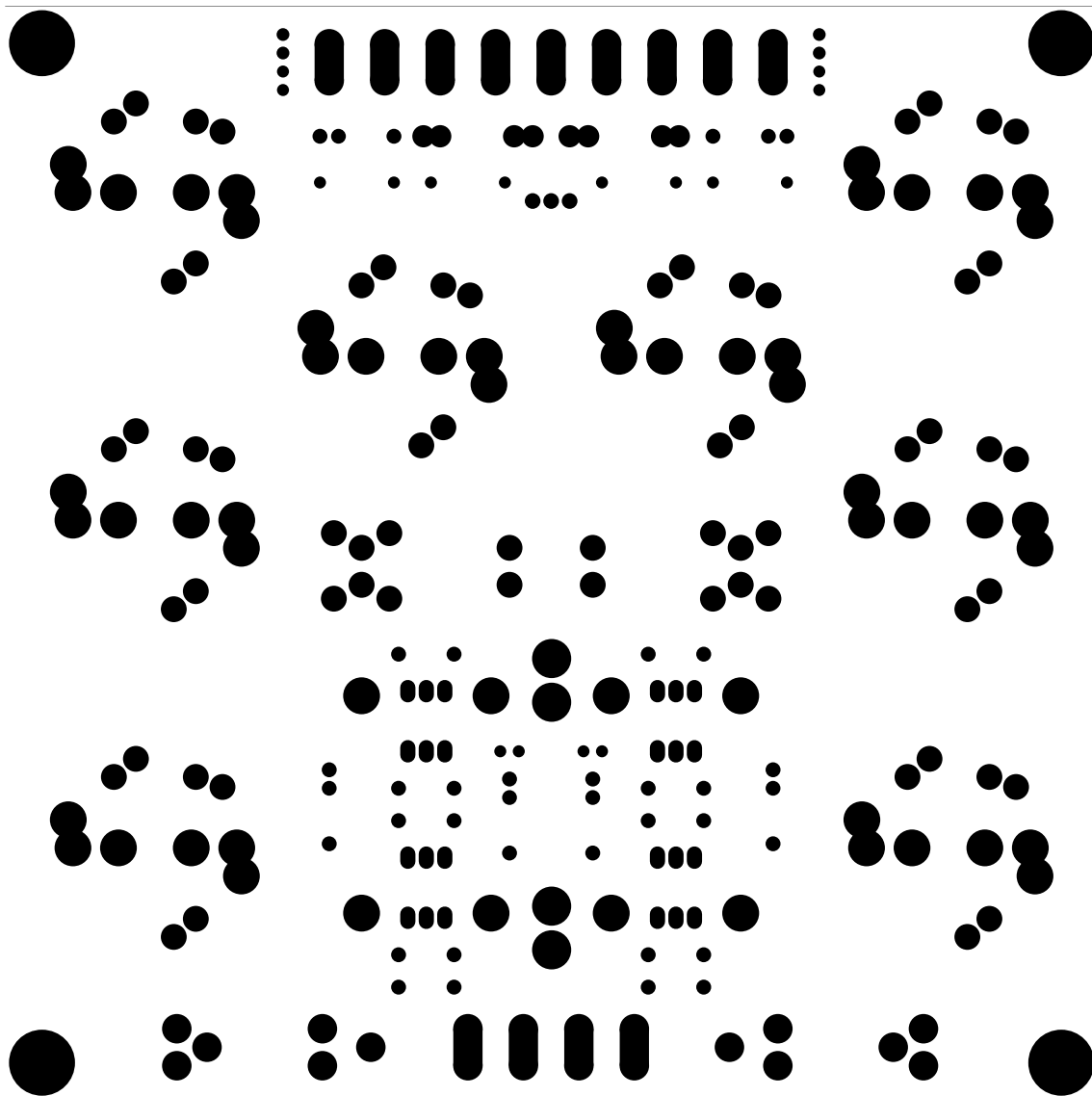
14. fab

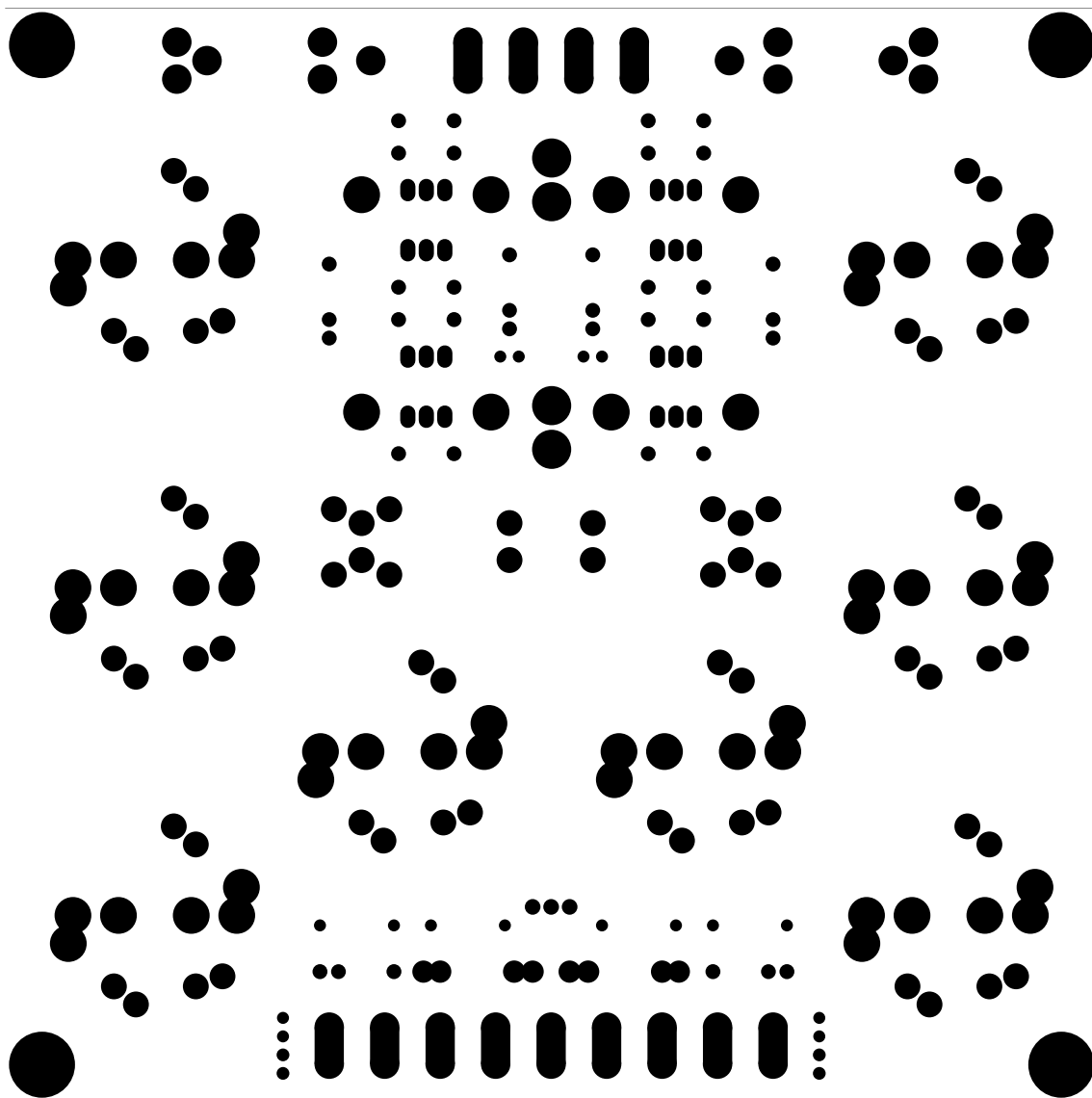


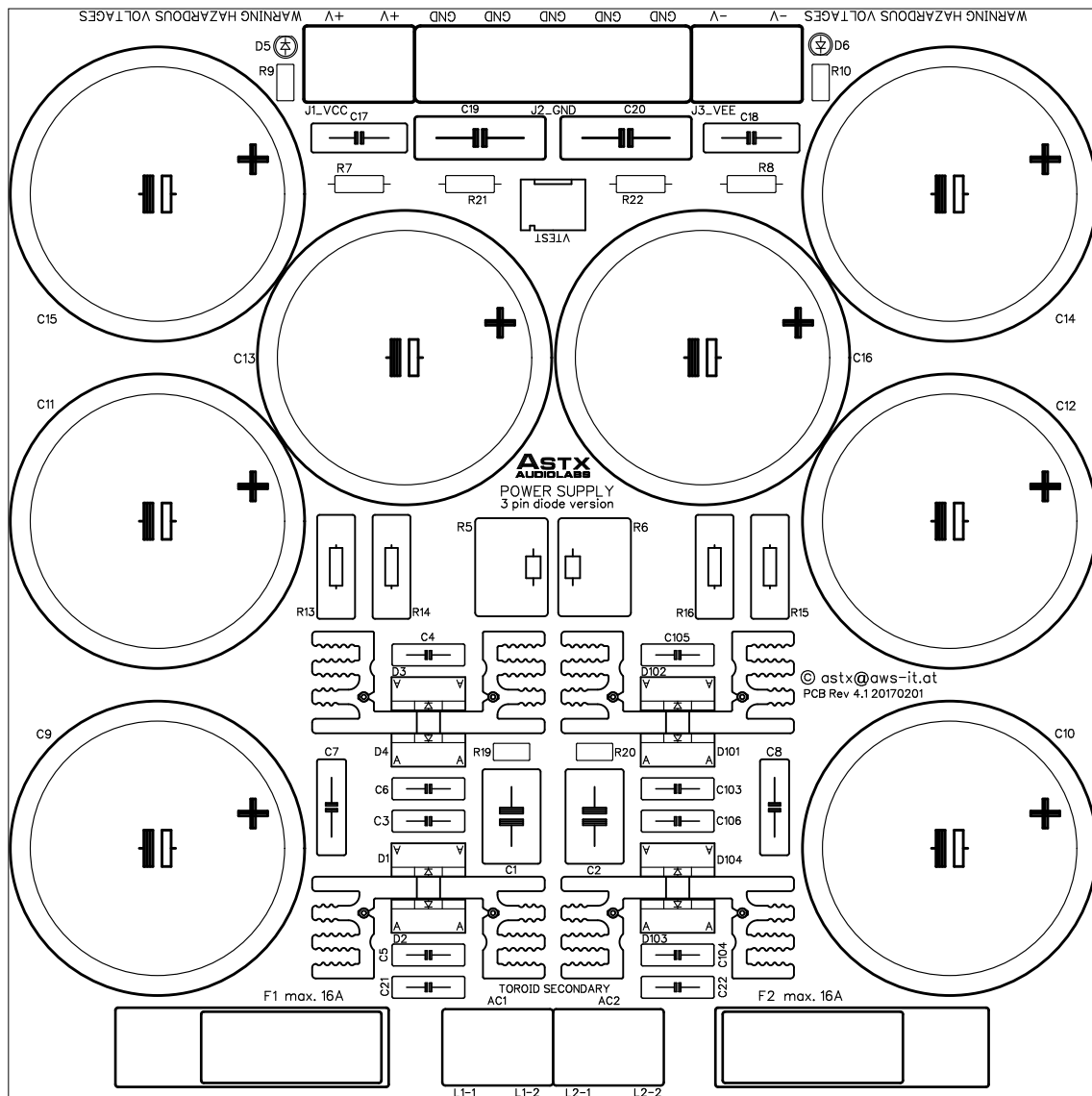




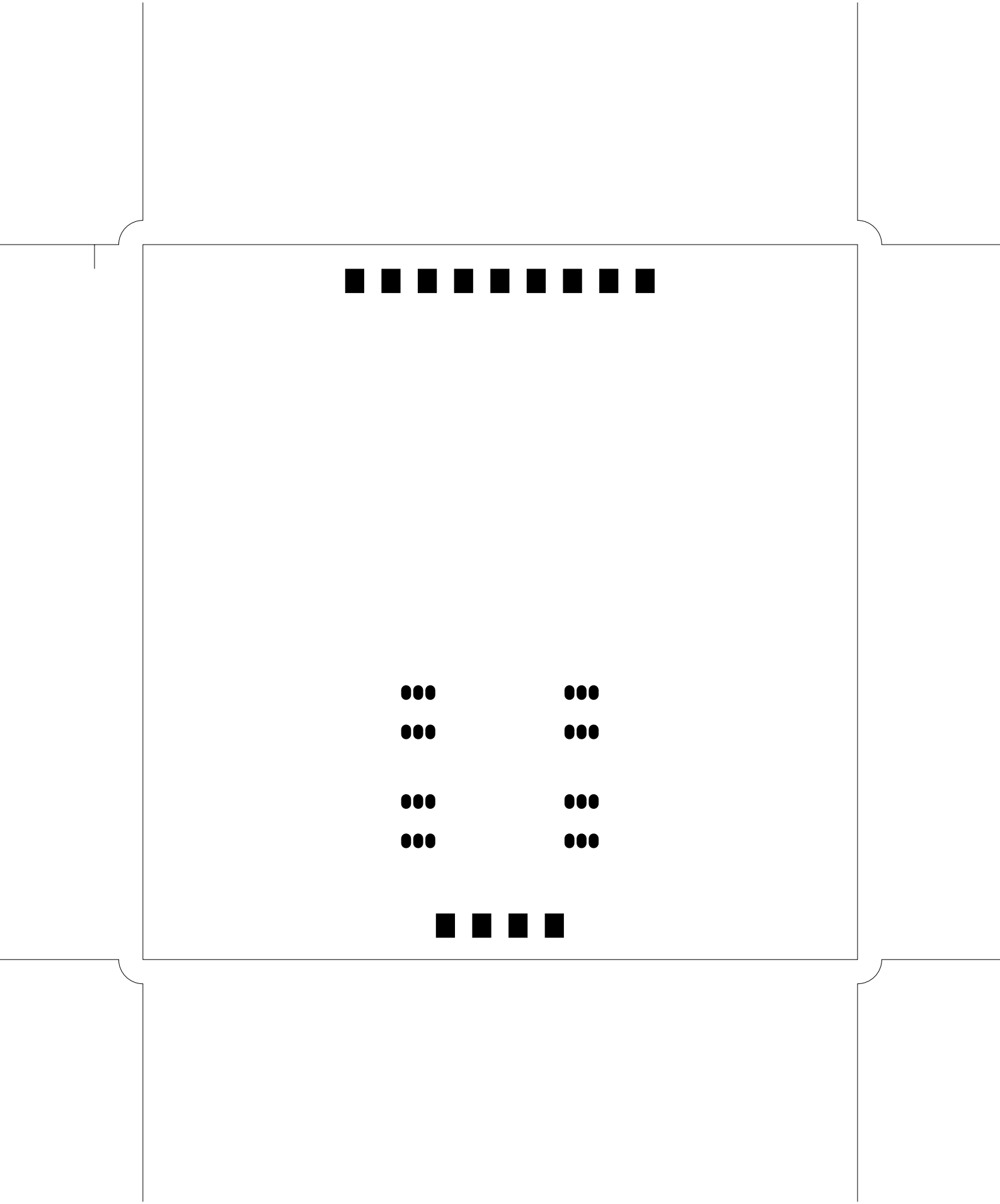


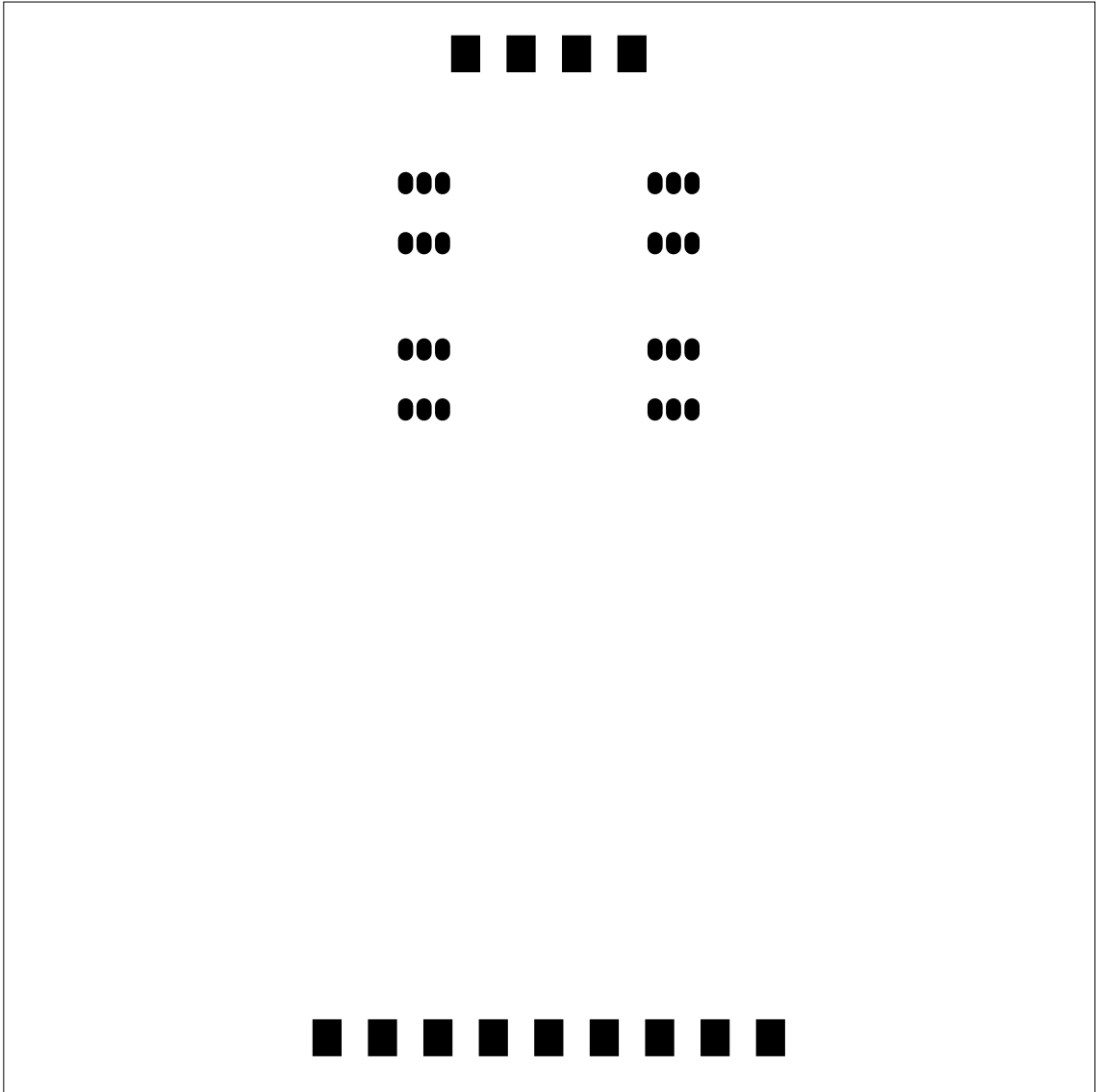


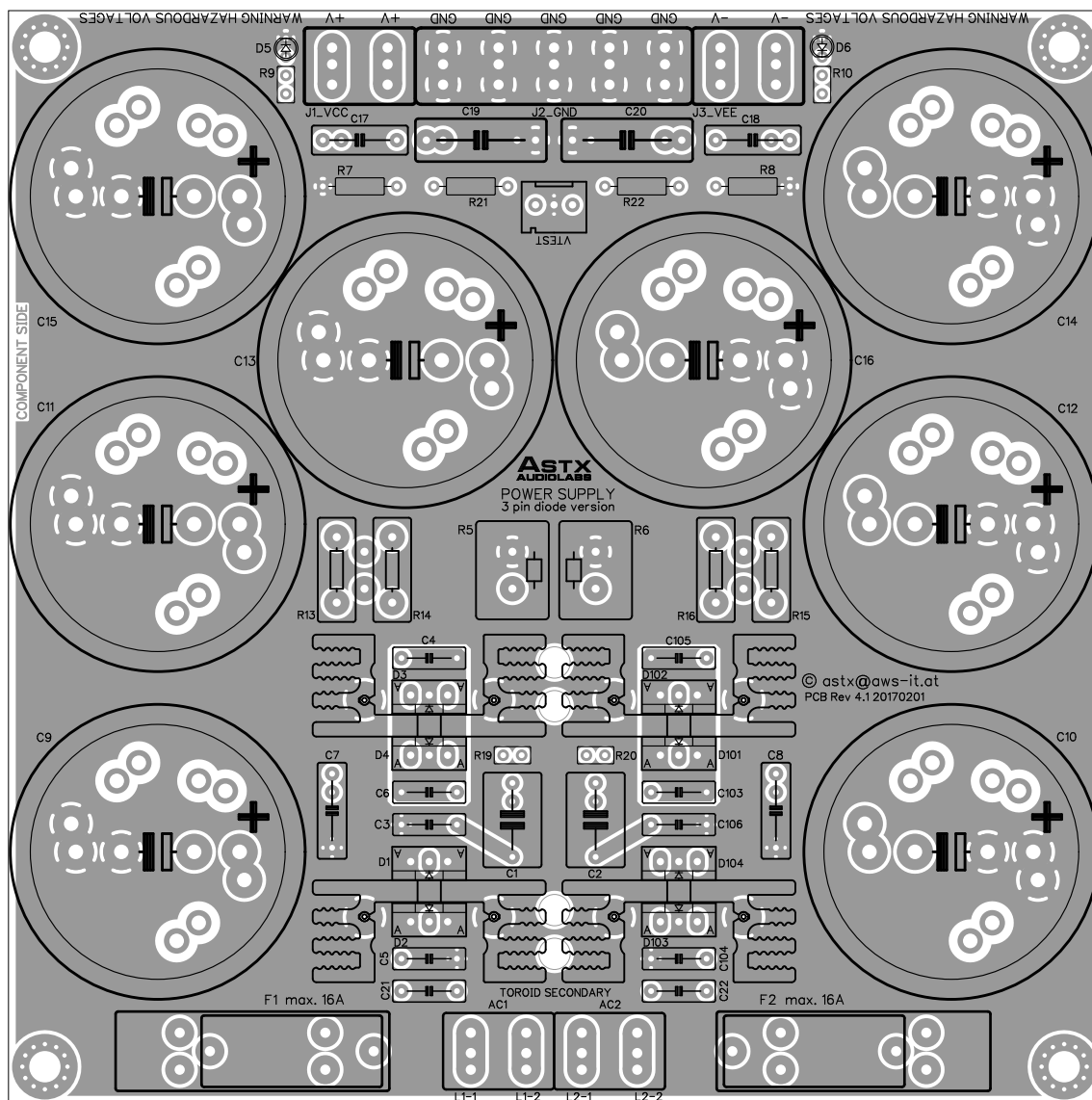


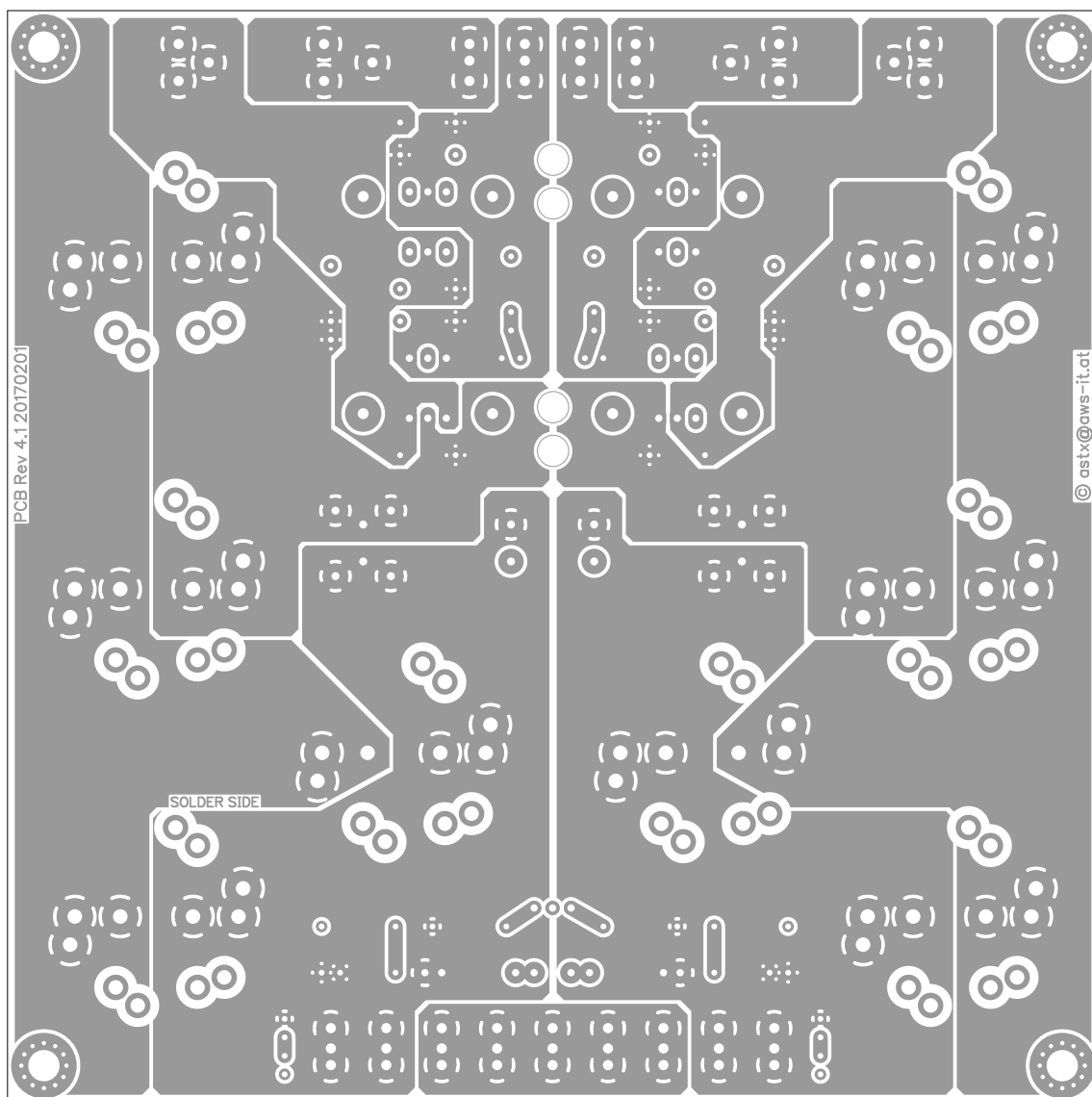












There are 8 different drill sizes used in this layout, 320 holes total

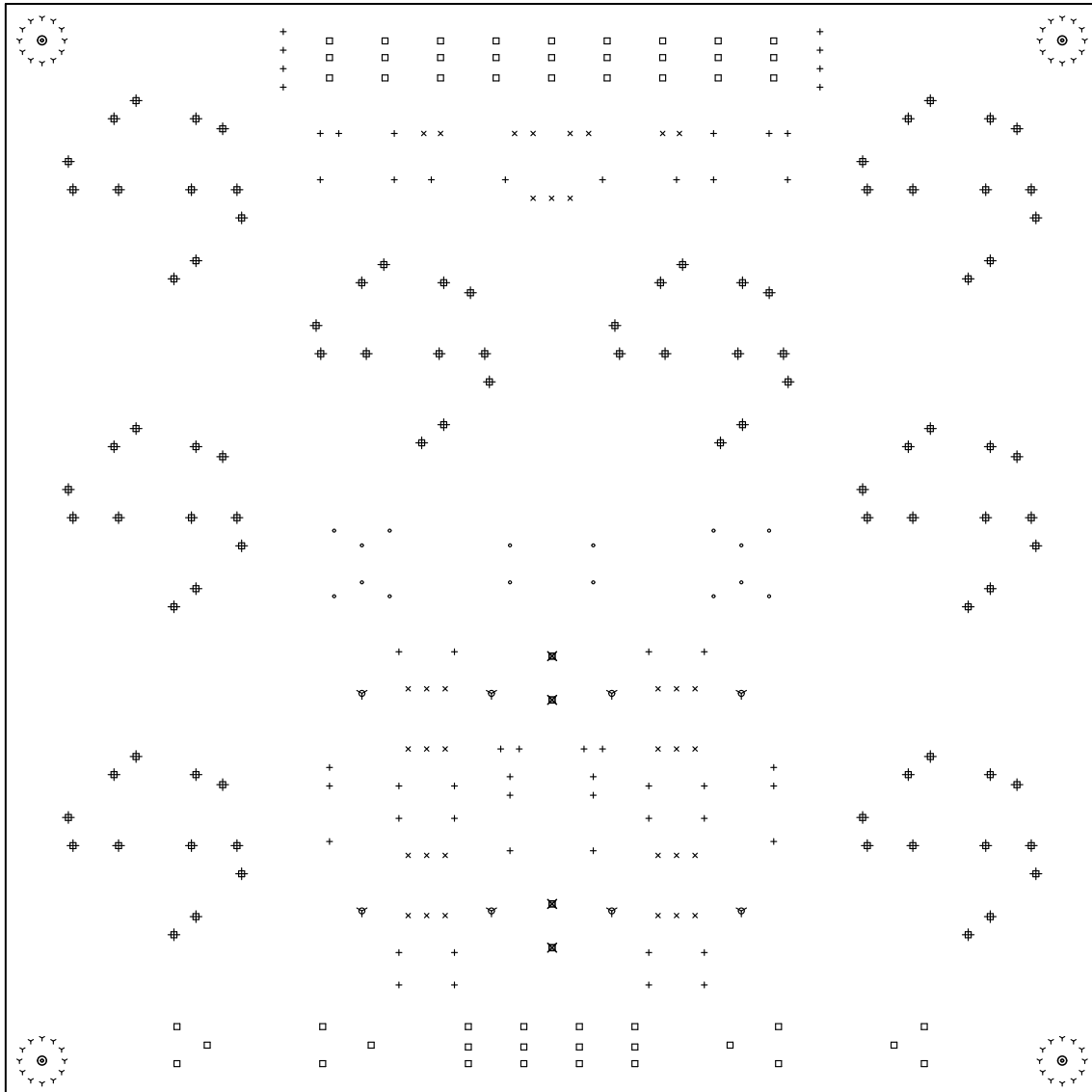
Symbol	Diam. (Inch)	Count	Plated?
⌵	0.024	48	YES
+	0.031	58	YES
×	0.039	35	YES
°	0.043	16	YES
□	0.055	51	YES
⌵	0.059	8	YES
⊕	0.079	96	YES
⊗	0.170	4	NO
⊙	0.170	4	YES

Title: (unknown) - Fabrication Drawing

Author: astx@aws-it.at

Date: Mit 01 Feb 2017 17:10:23 GMT UTC

Maximum Dimensions: 5905.511811 mils wide, 5905.511811 mils high



Board outline is the centerline of this 8.000000 mil rectangle - 0,0 to 5905.511811,5905.511811 mils