

1. Table of Contents (This Page)

Created on Wed Feb 1 18:10:07 2017

2. component

3. solder

4. plated-drill

5. unplated-drill

6. componentmask

7. soldermask

8. topsilk

9. bottomsilk

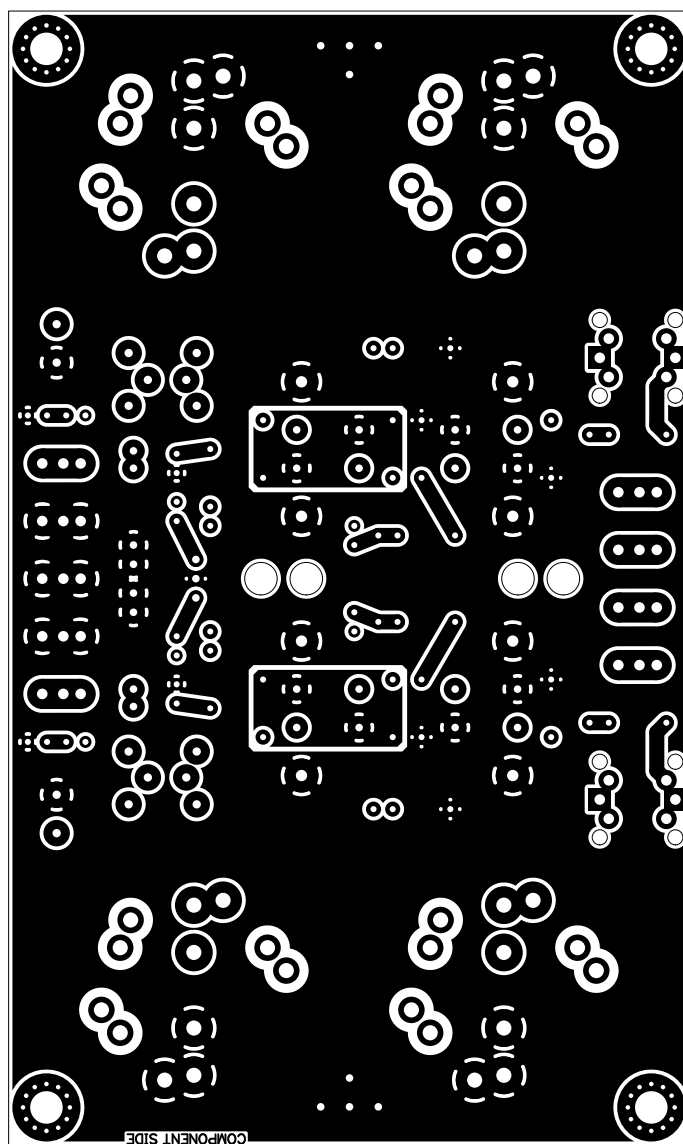
10. toppaste

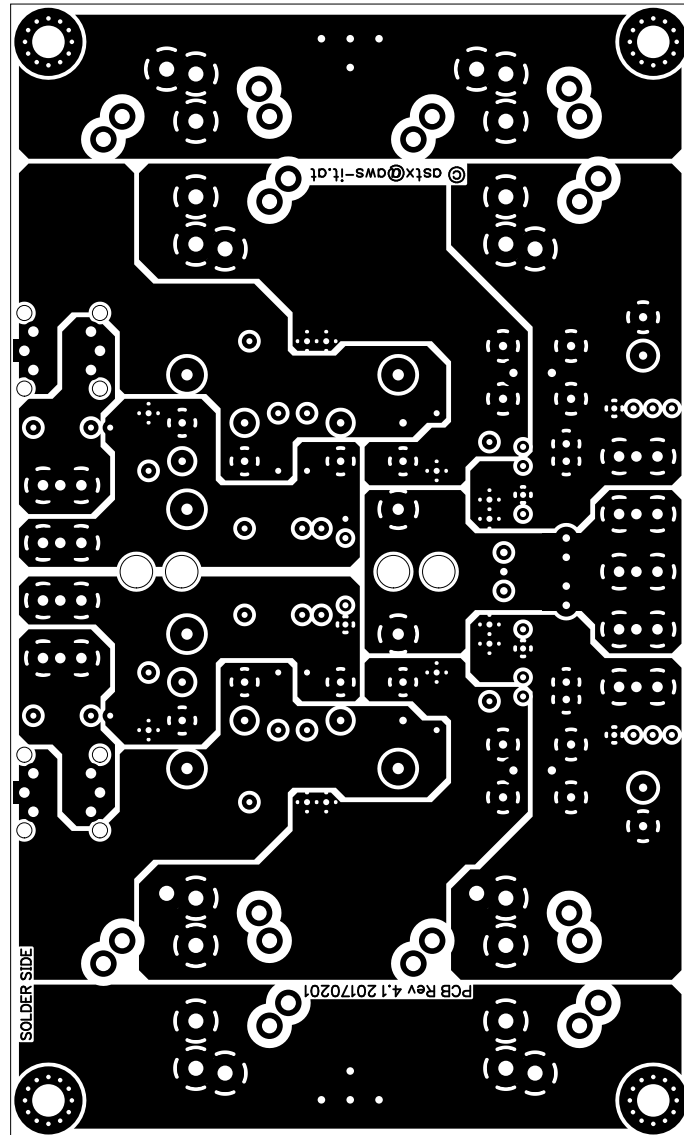
11. bottompaste

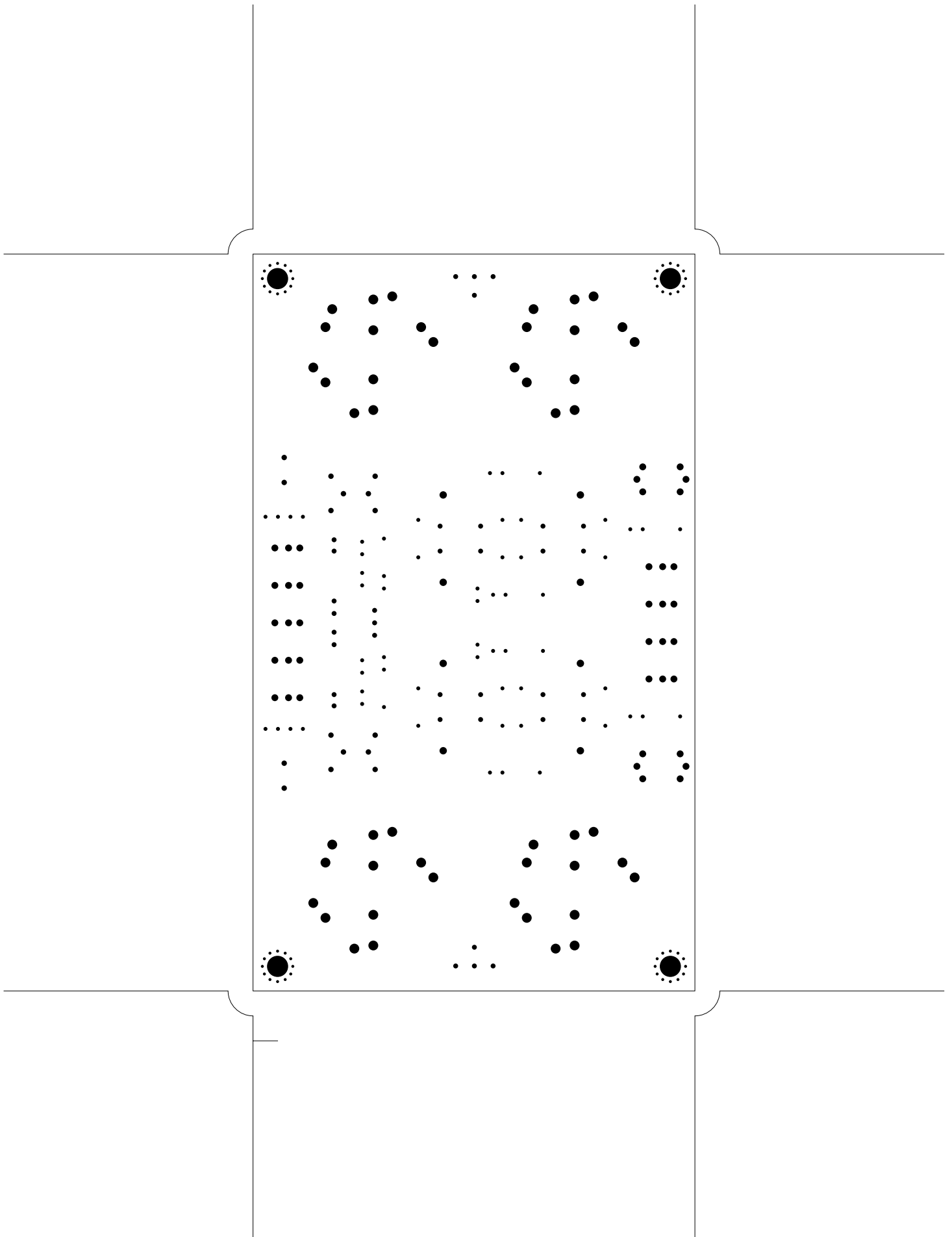
12. topassembly

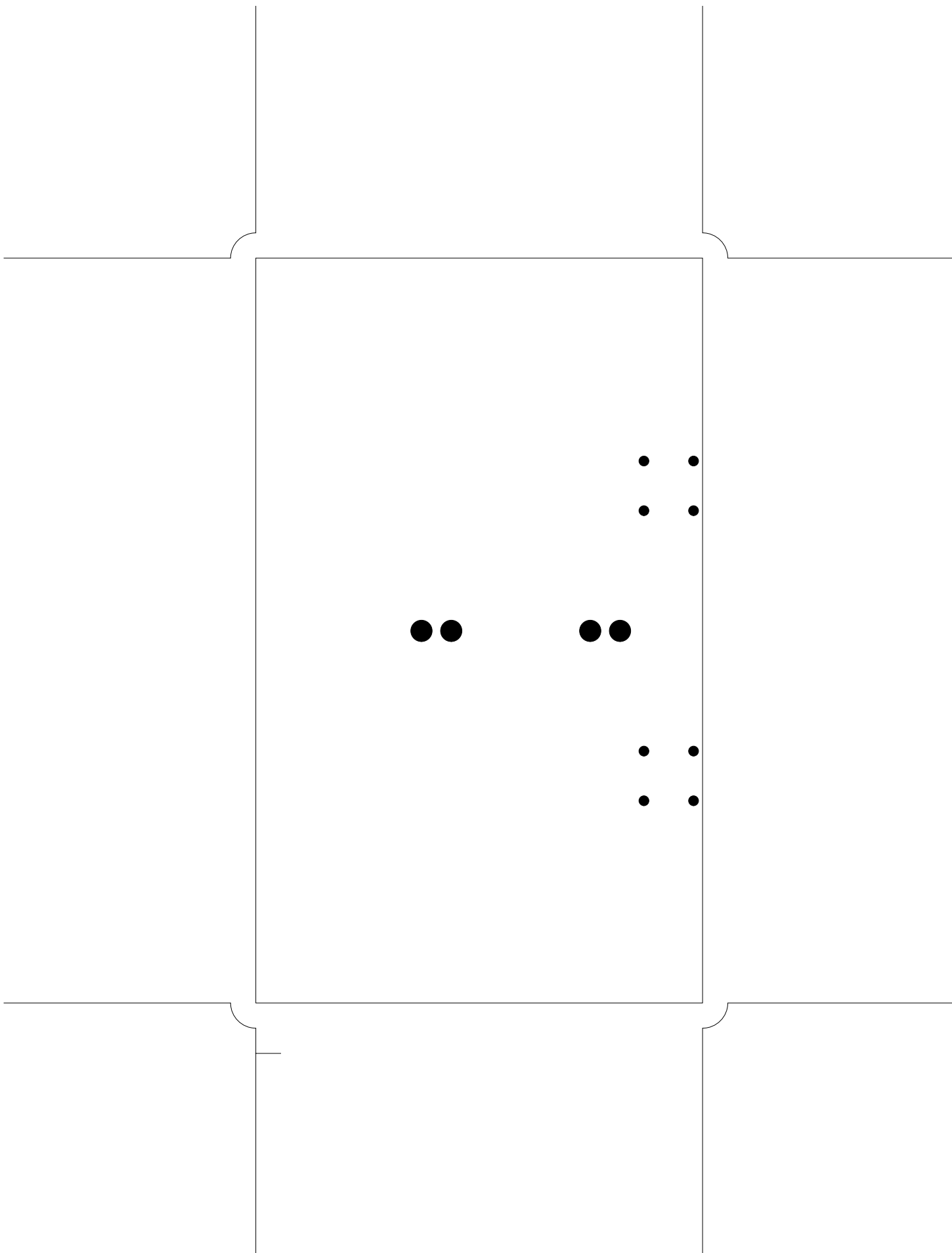
13. bottomassembly

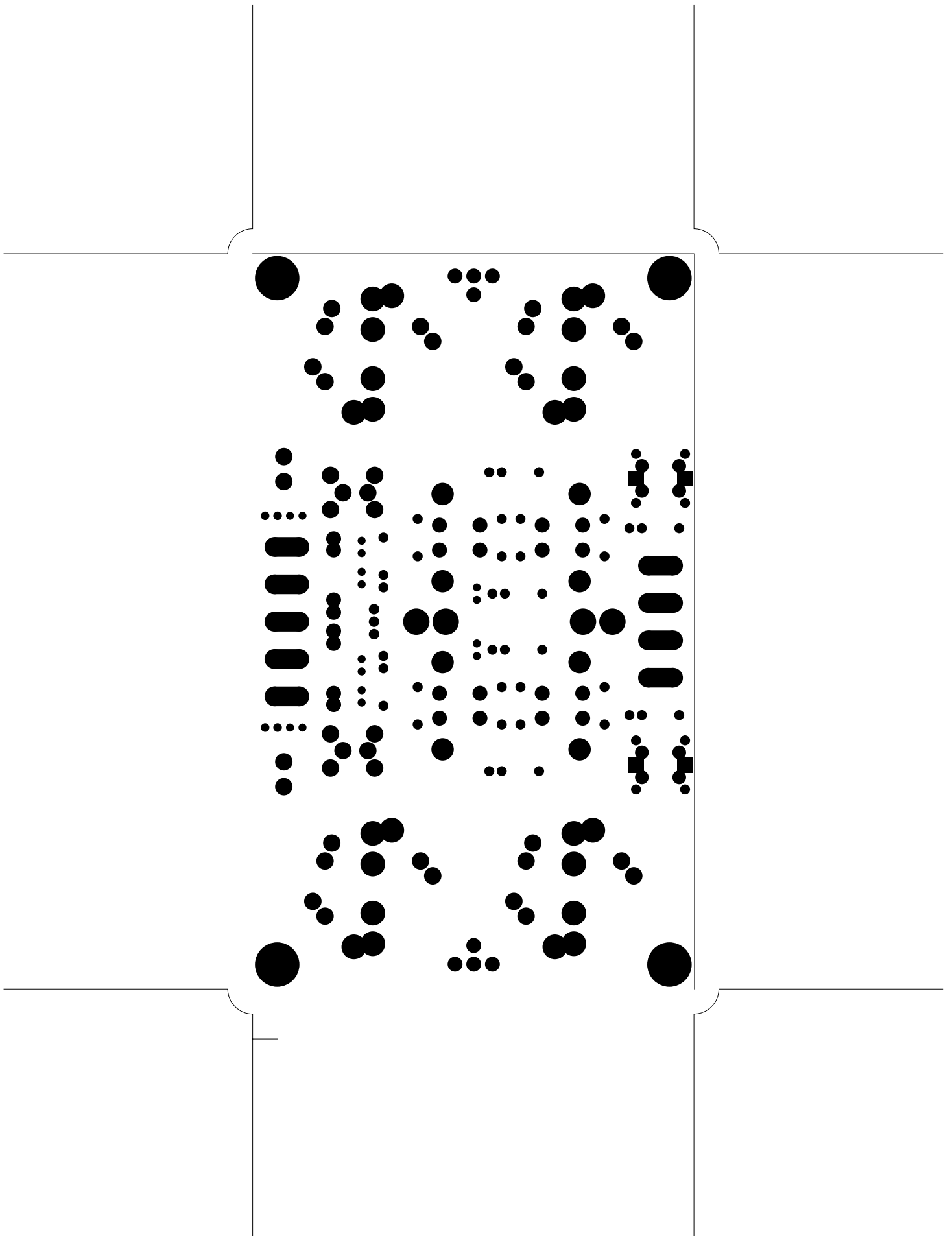
14. fab

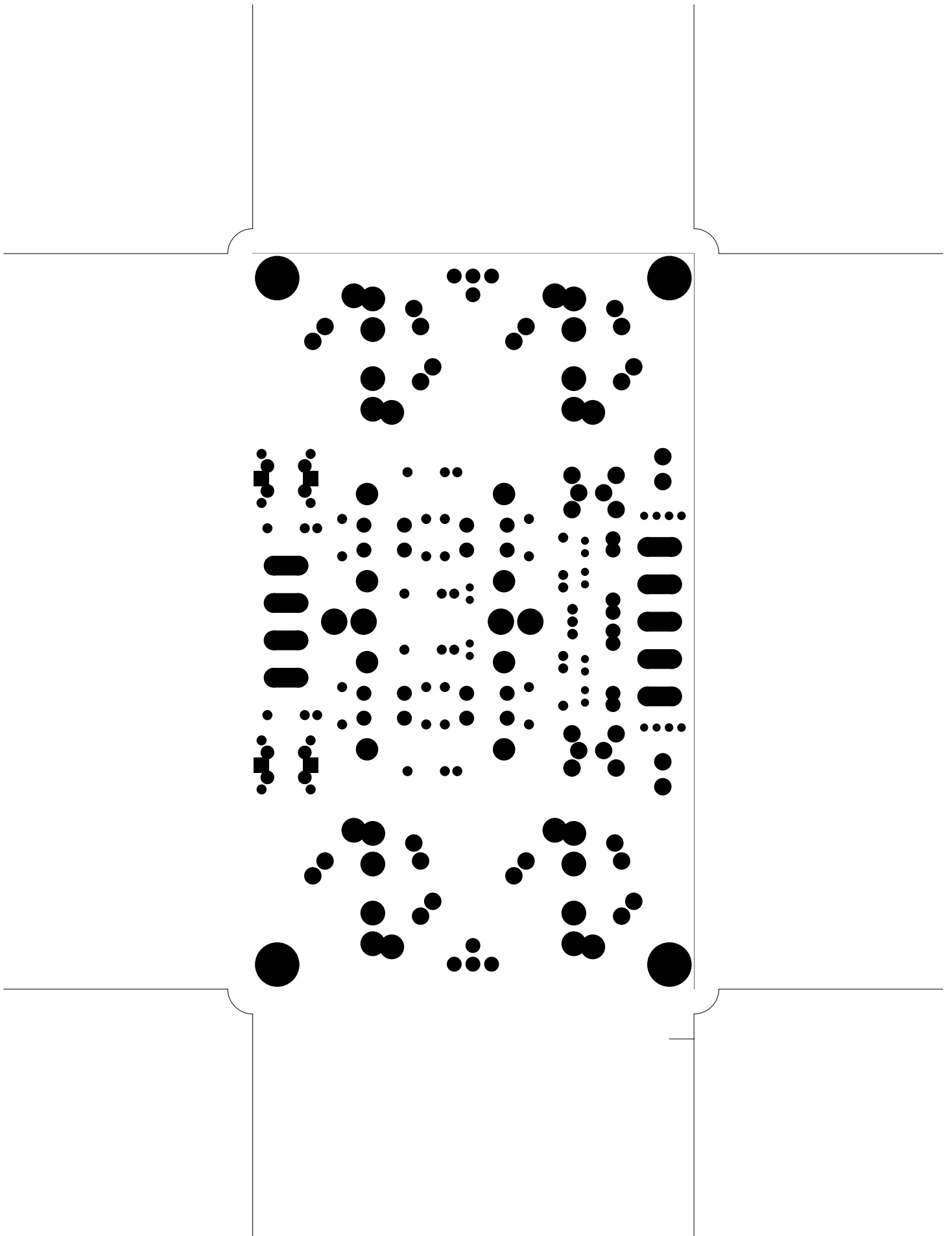


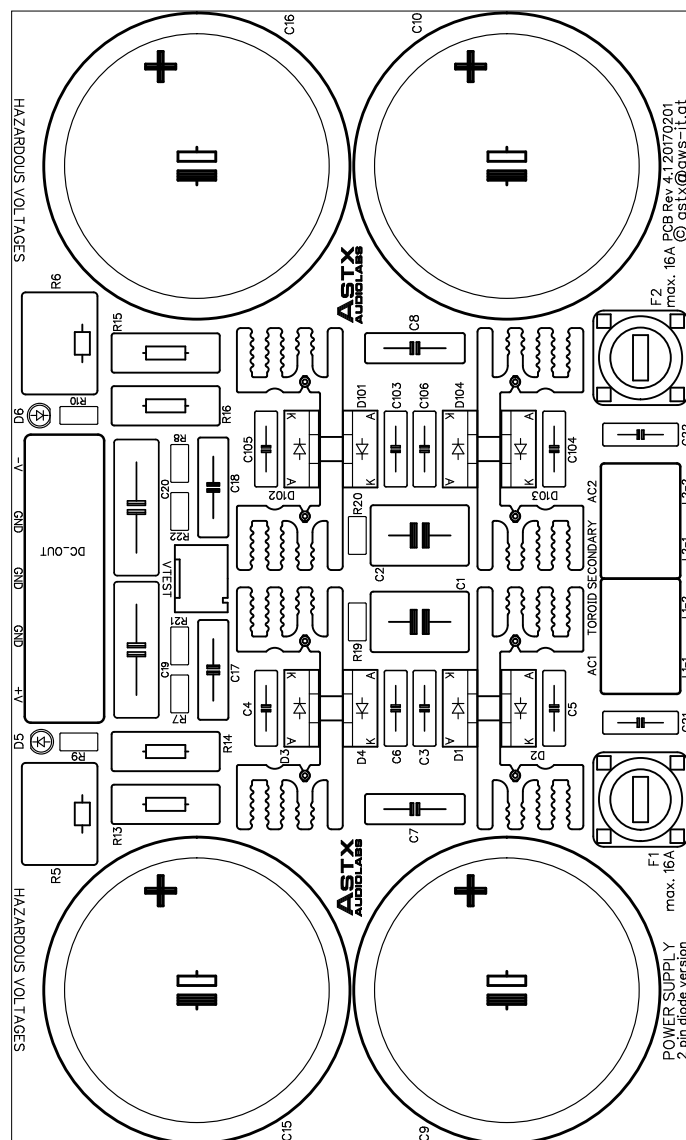


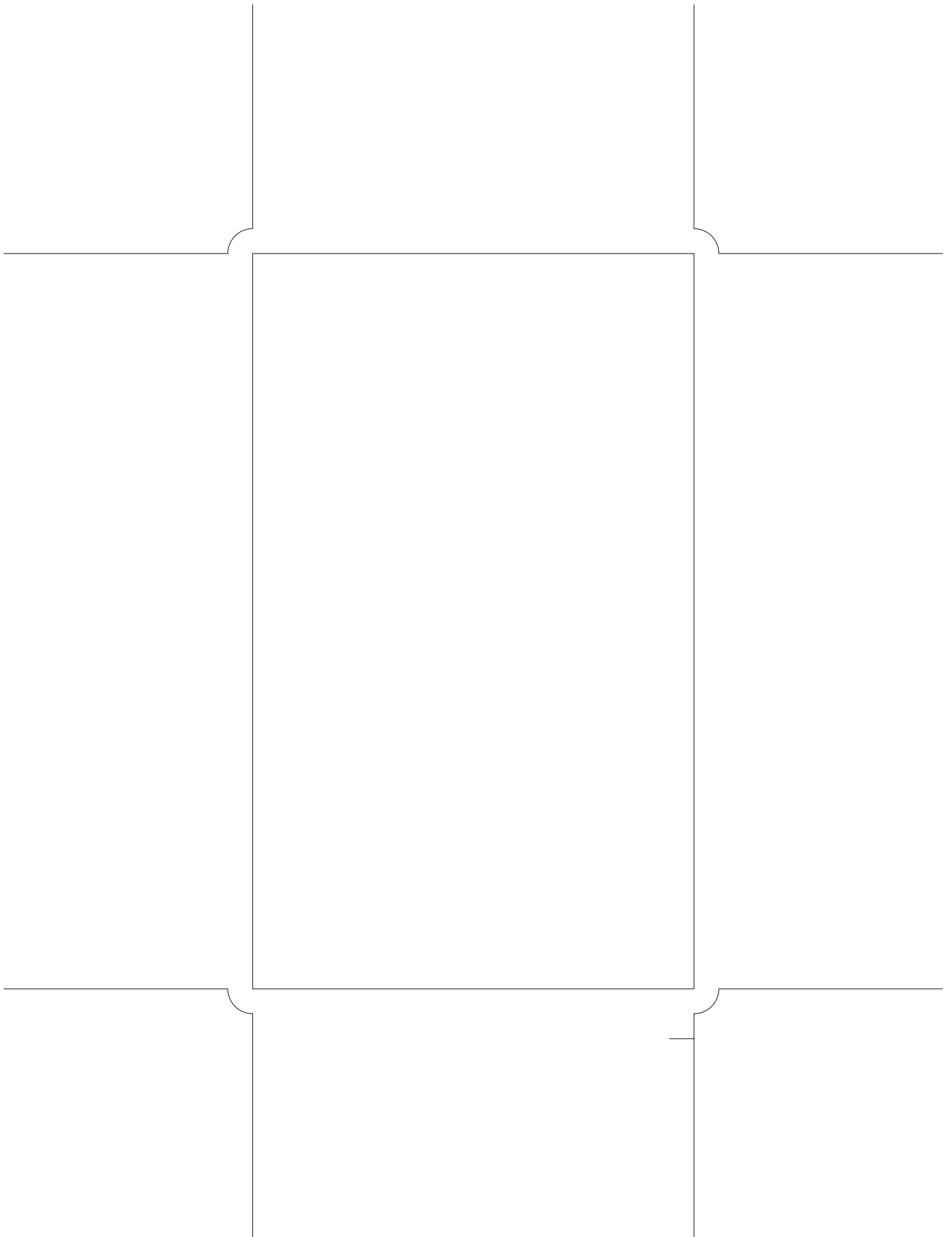




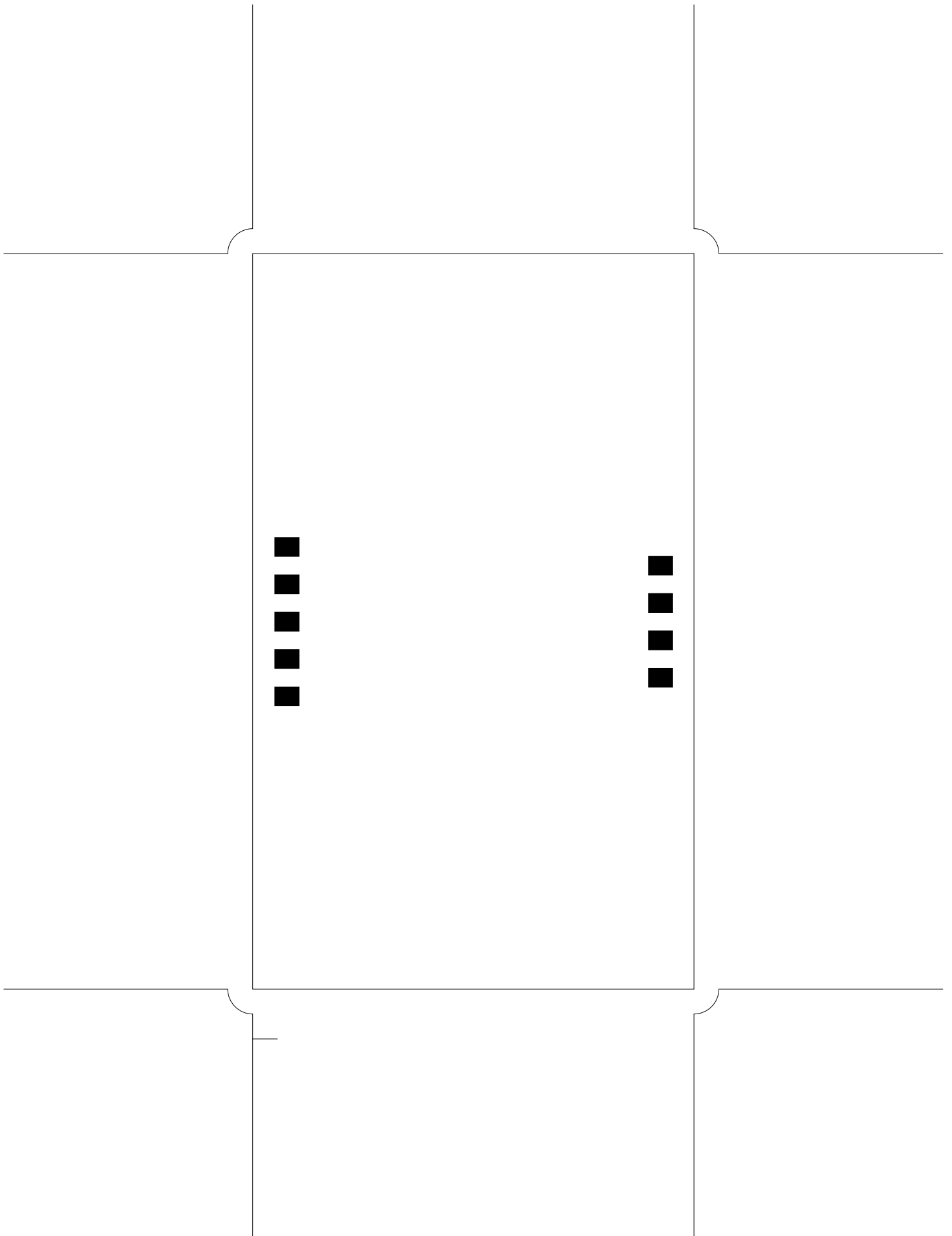


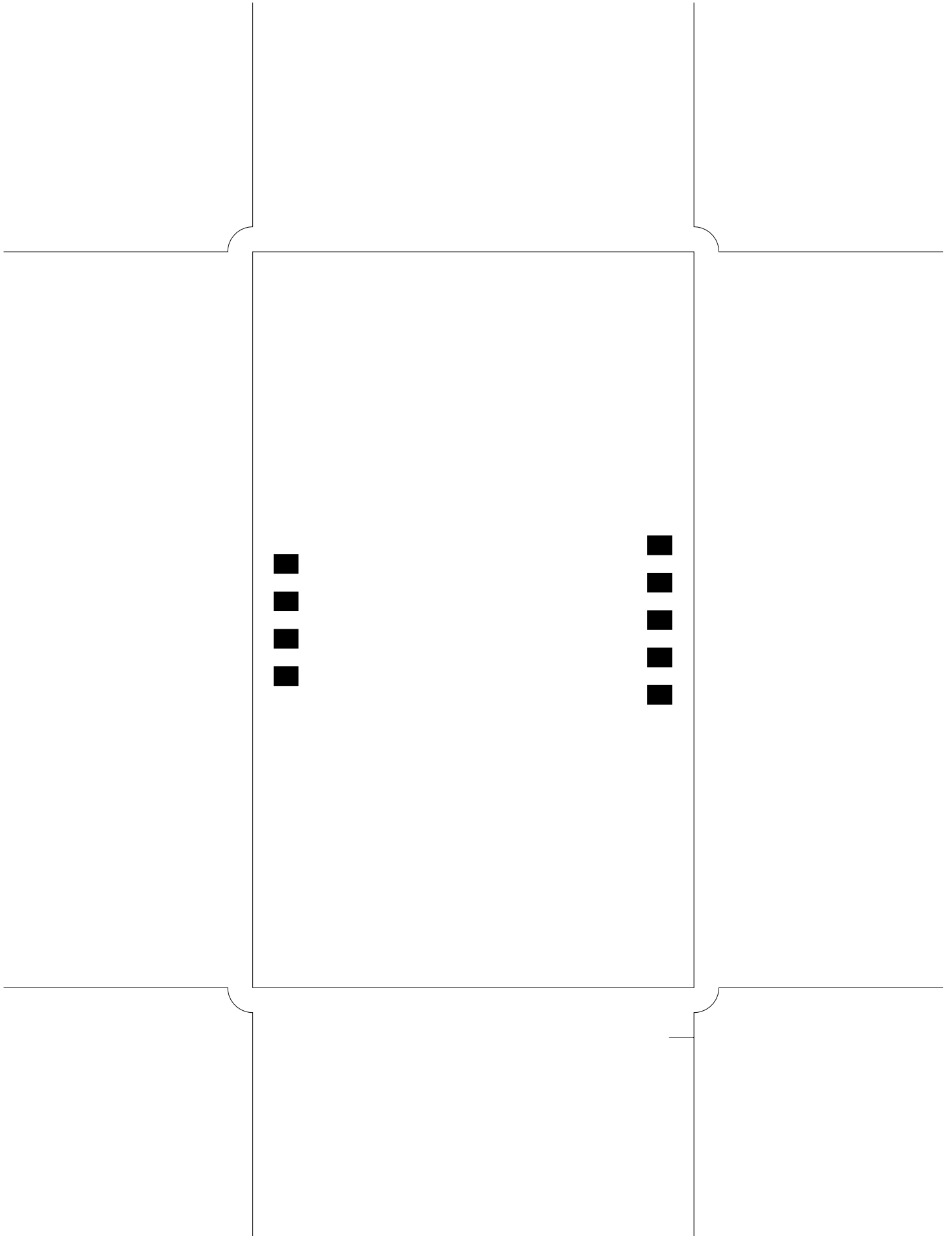


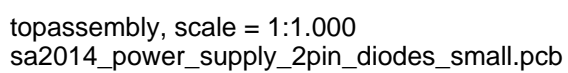


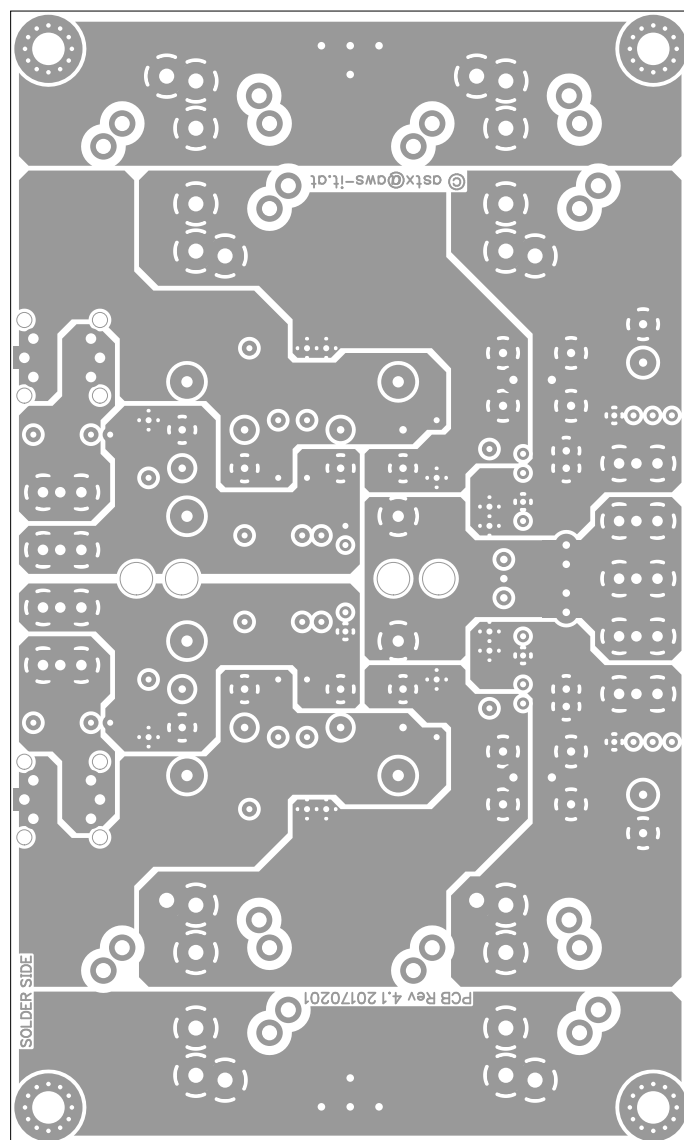


bottomsilk (mirrored), scale = 1:1.000
sa2014_power_supply_2pin_diodes_small.pcb





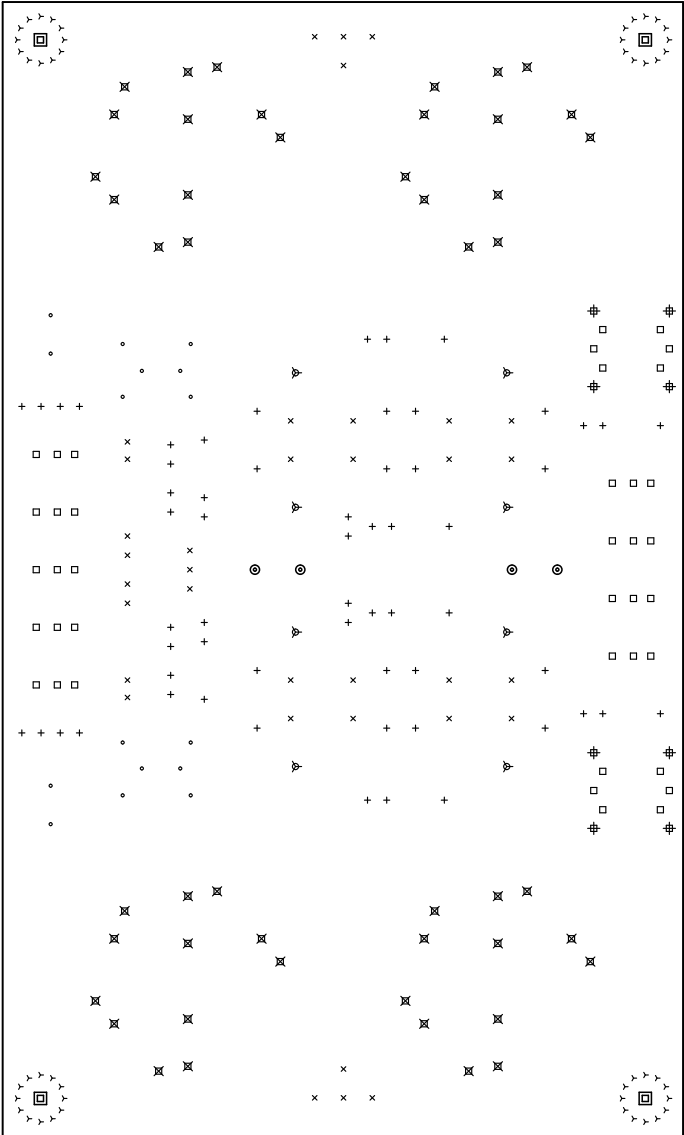




There are 8 different drill sizes used in this layout, 270 holes total

Symbol	Diam. (Inch)	Count	Plated?
γ	0.024	48	YES
+	0.031	60	YES
x	0.039	35	YES
•	0.043	16	YES
□	0.055	39	YES
▽	0.059	8	YES
⊕	0.079	8	NO
⊗	0.079	48	YES
⊙	0.170	4	NO
⊠	0.170	4	YES

Title: (unknown) - Fabrication Drawing
Author : astx@aws-it.at
Date: Mit 01 Feb 2017 17:00:07 GMT UTC
Maximum Dimensions: 5905.511811 mils wide, 3543.307087 mils high



Board outline is the centerline of this 8.000000 mil rectangle - 0,0 to 5905.51181,3543.307087 mils