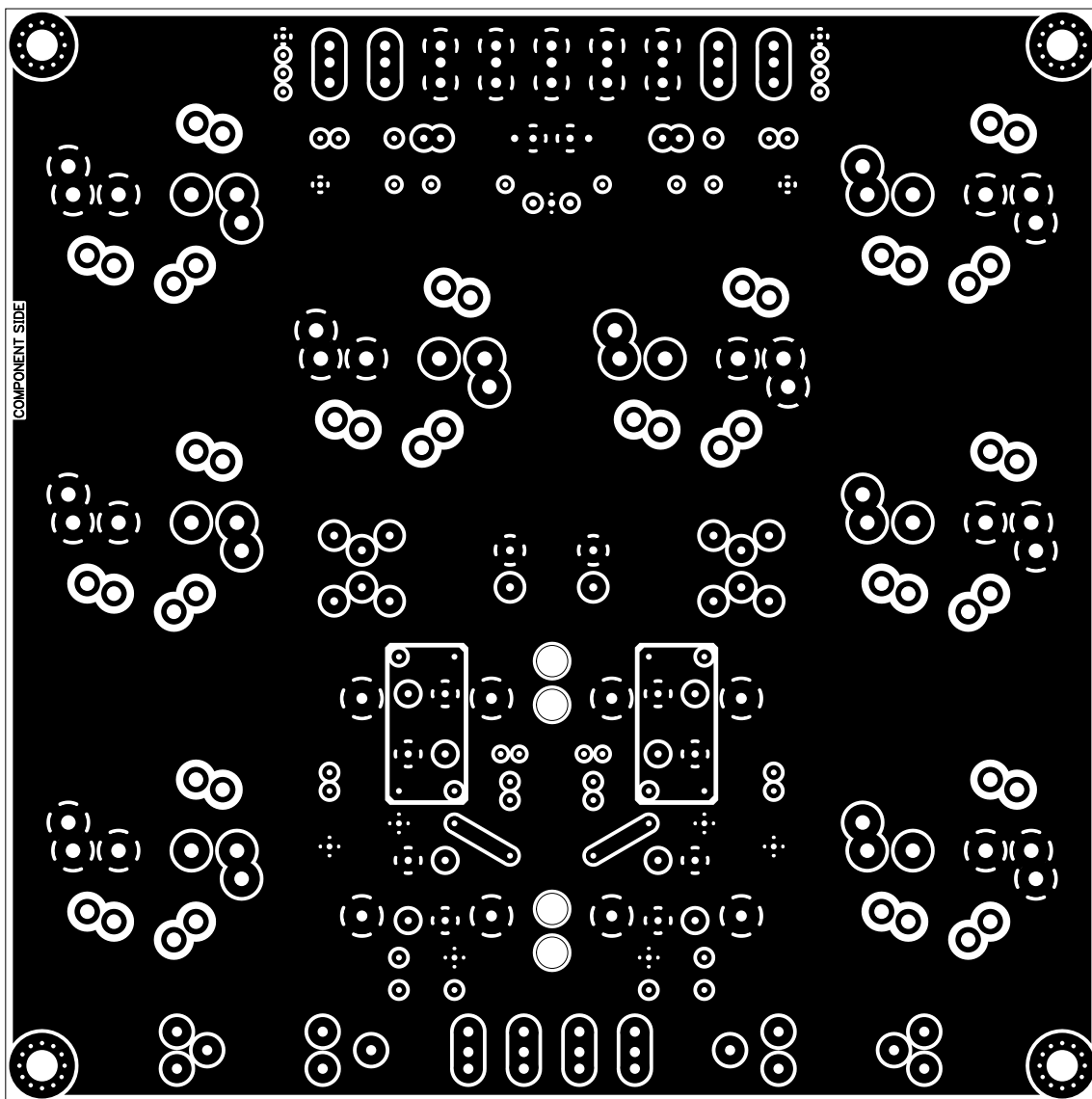
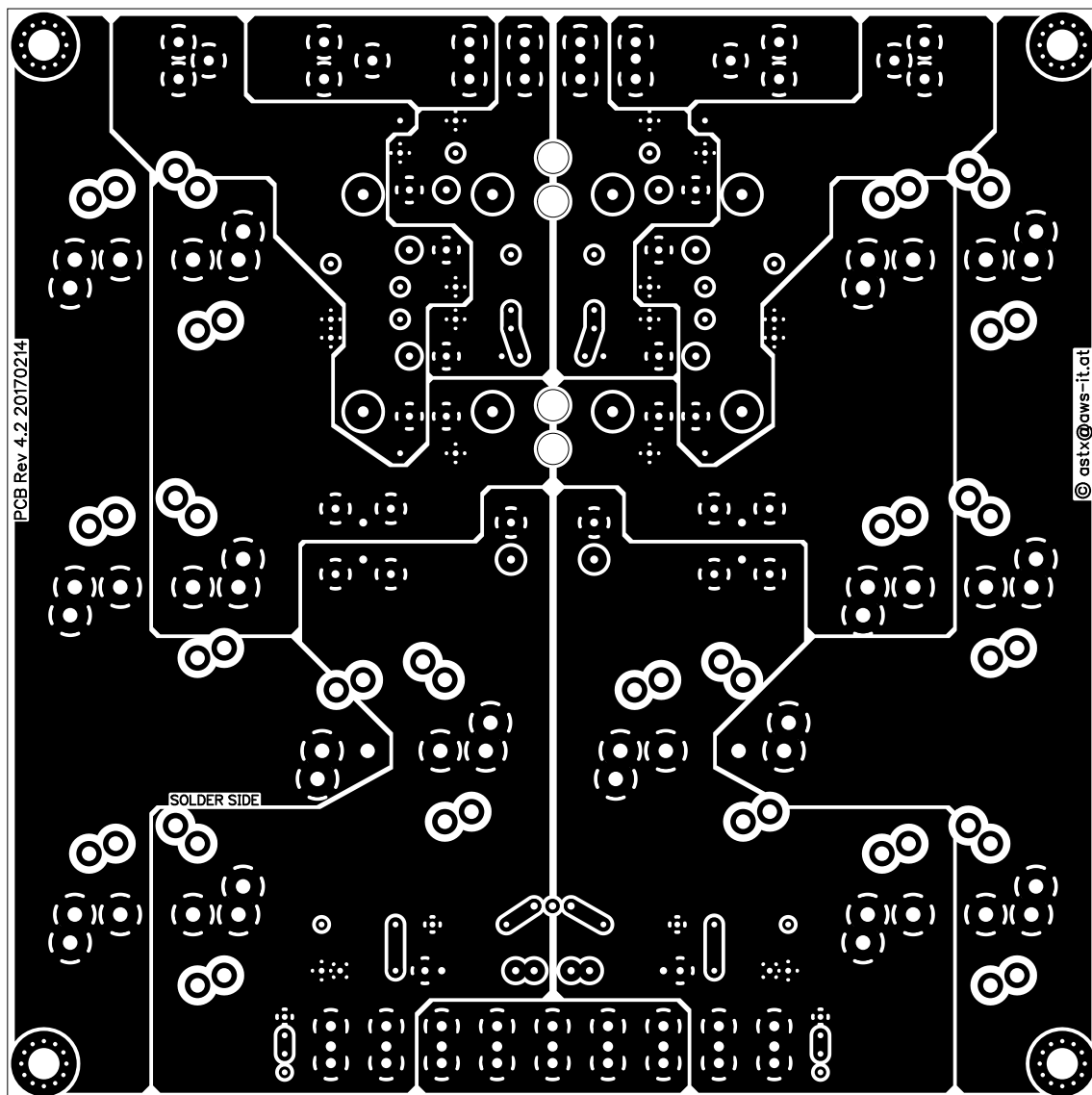
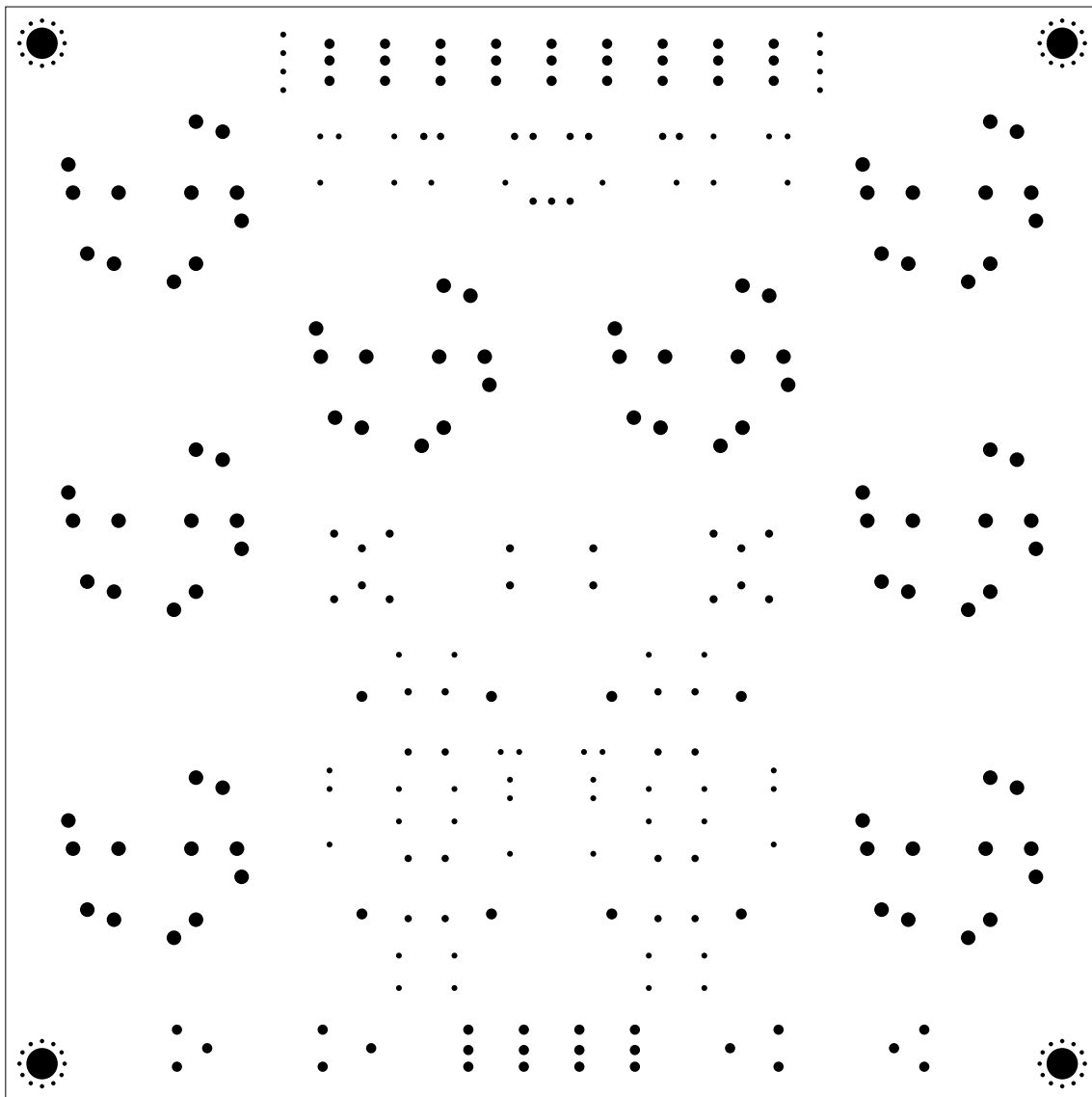


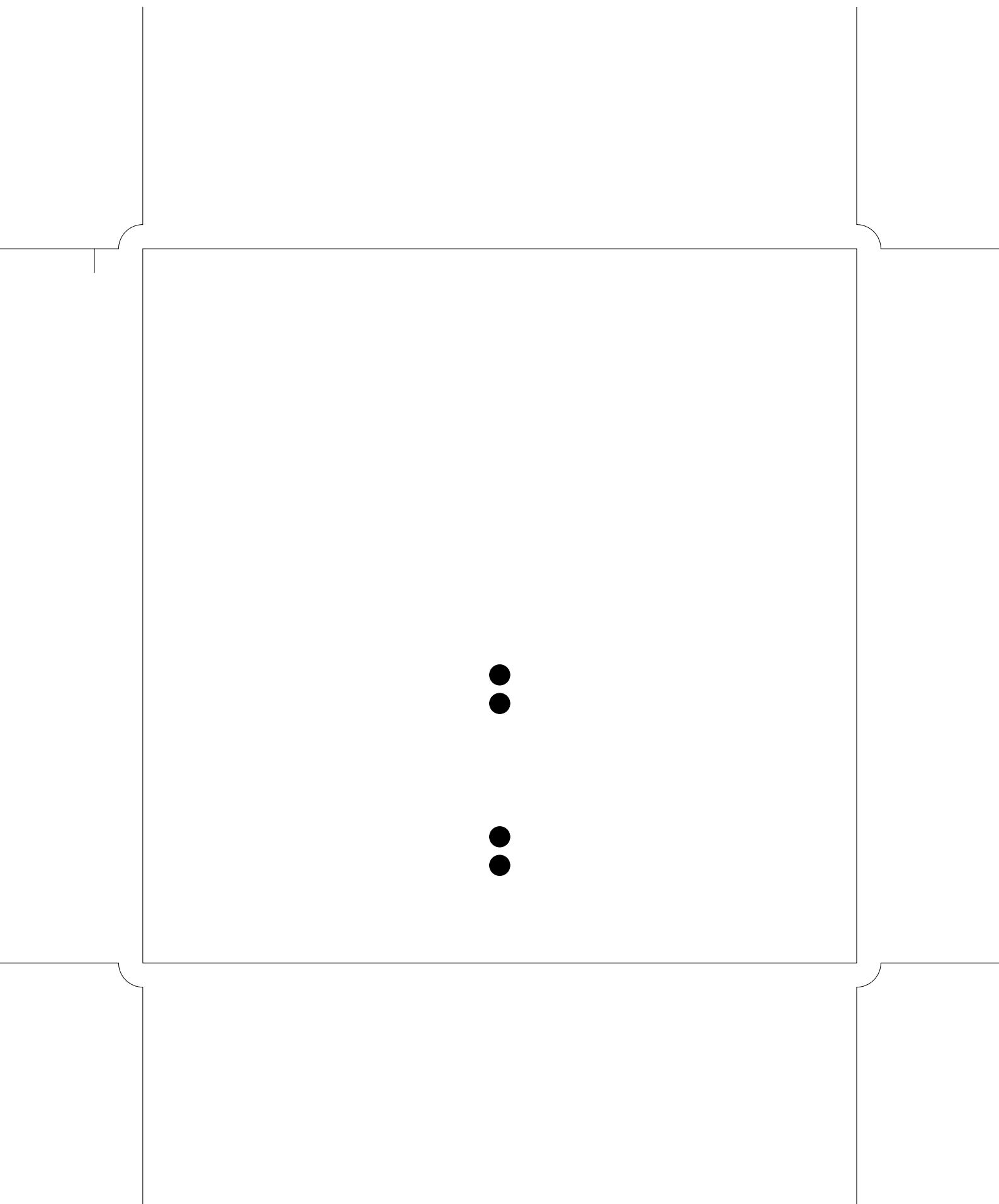
1. Table of Contents (This Page)  
Created on Tue Feb 14 10:03:02 2017

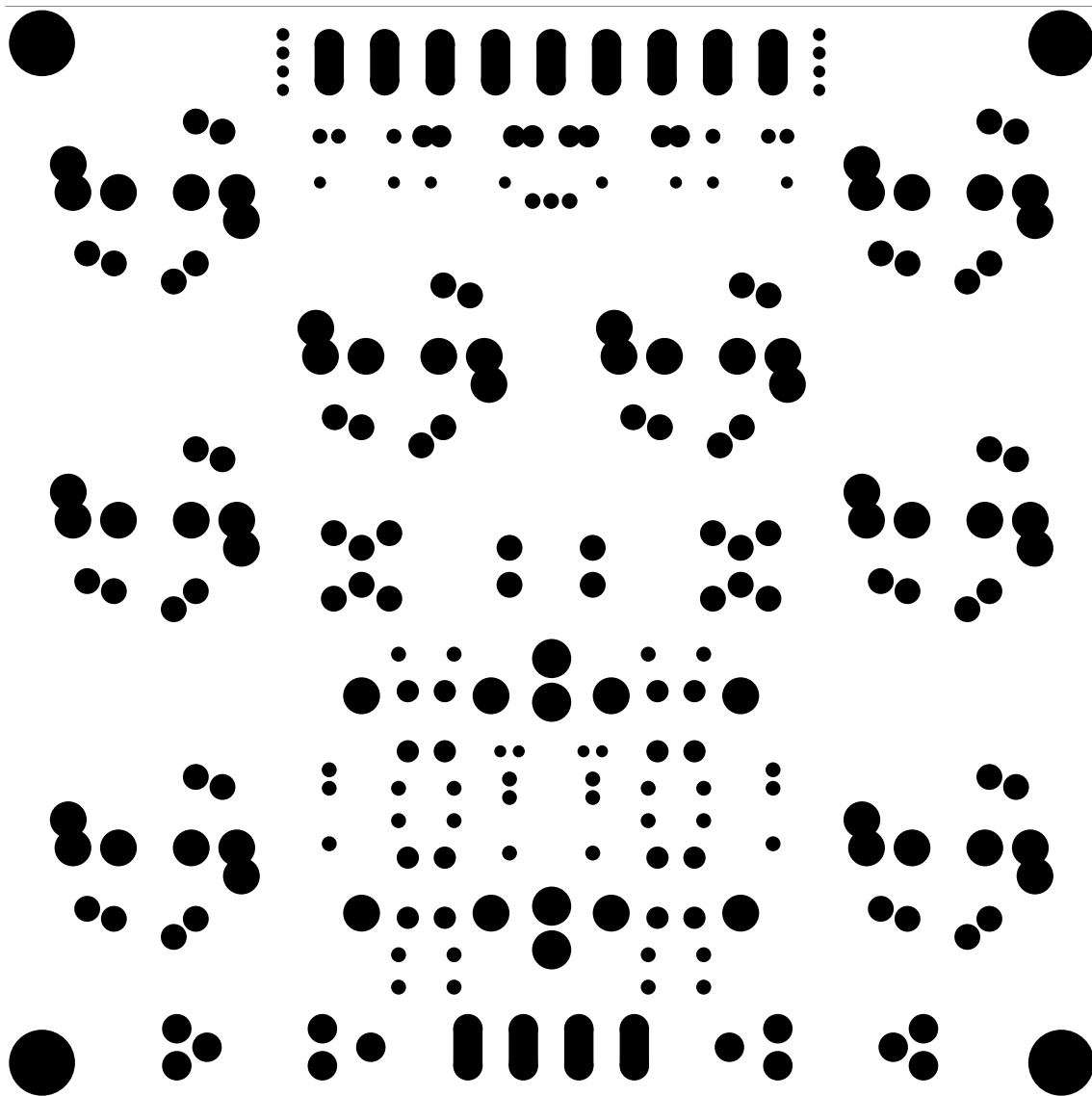
2. component
3. solder
4. plated-drill
5. unplated-drill
6. componentmask
7. soldermask
8. topsilk
9. bottomsilk
10. toppaste
11. bottompaste
12. topassembly
13. bottomassembly
14. fab

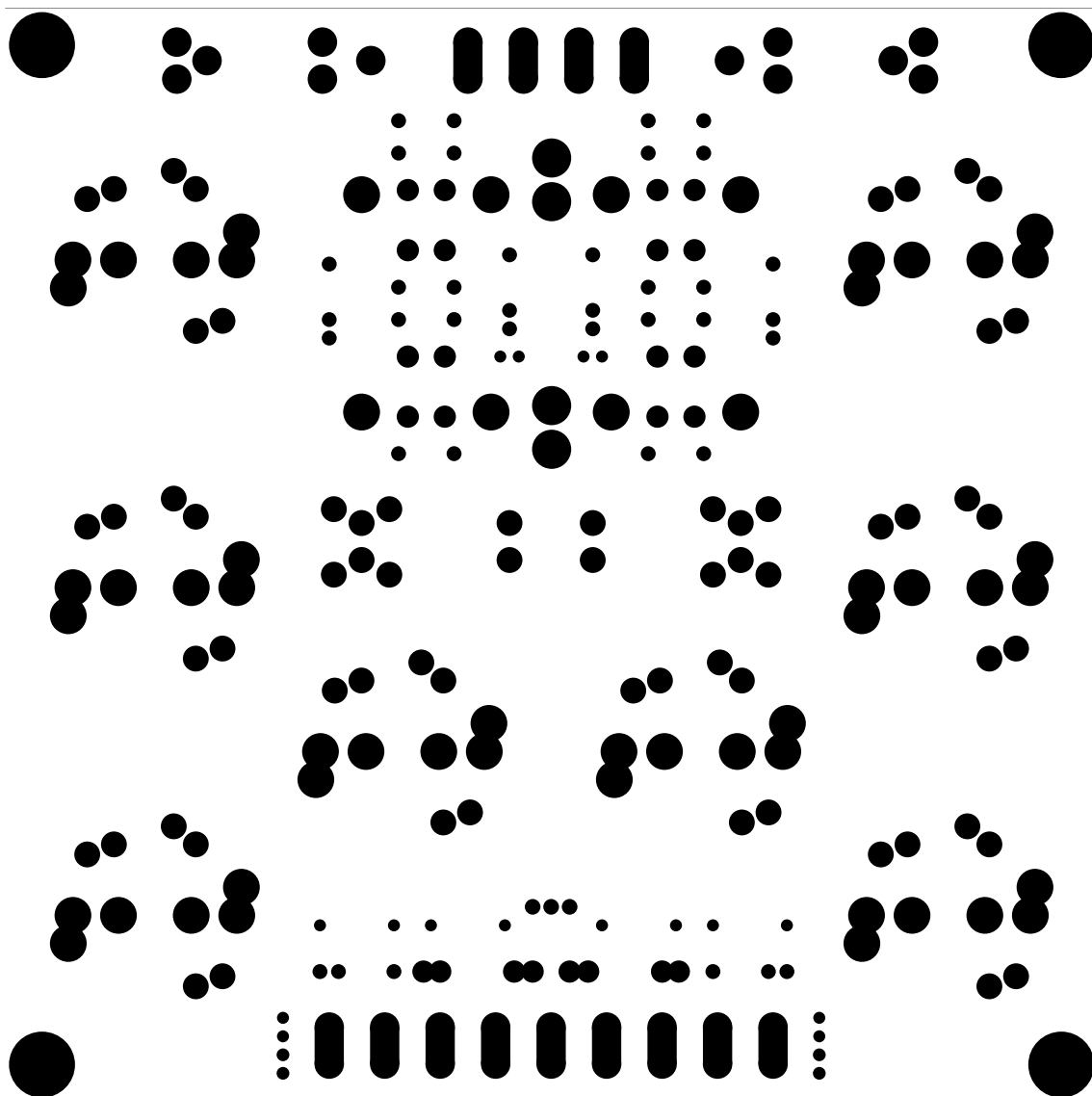


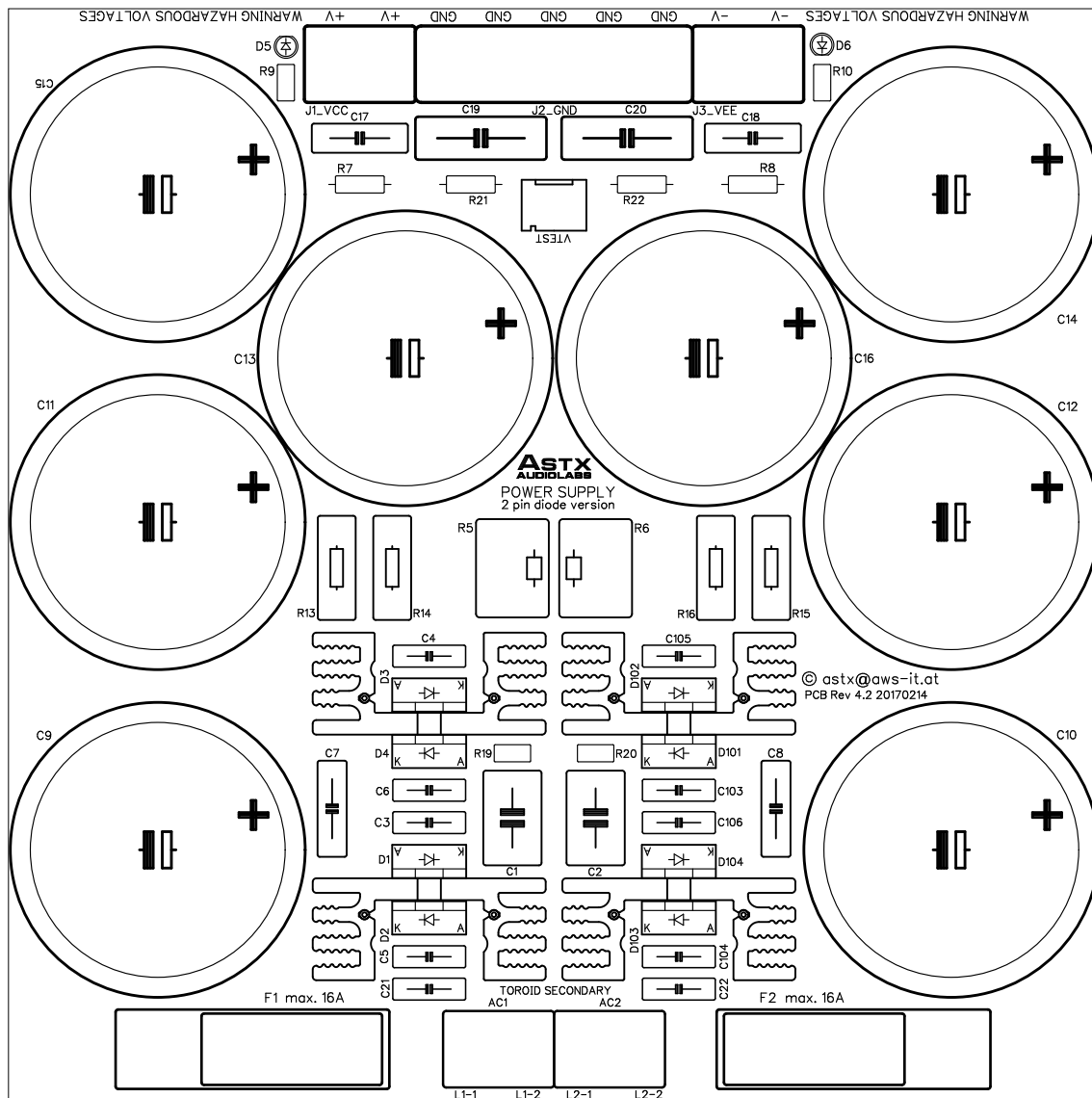






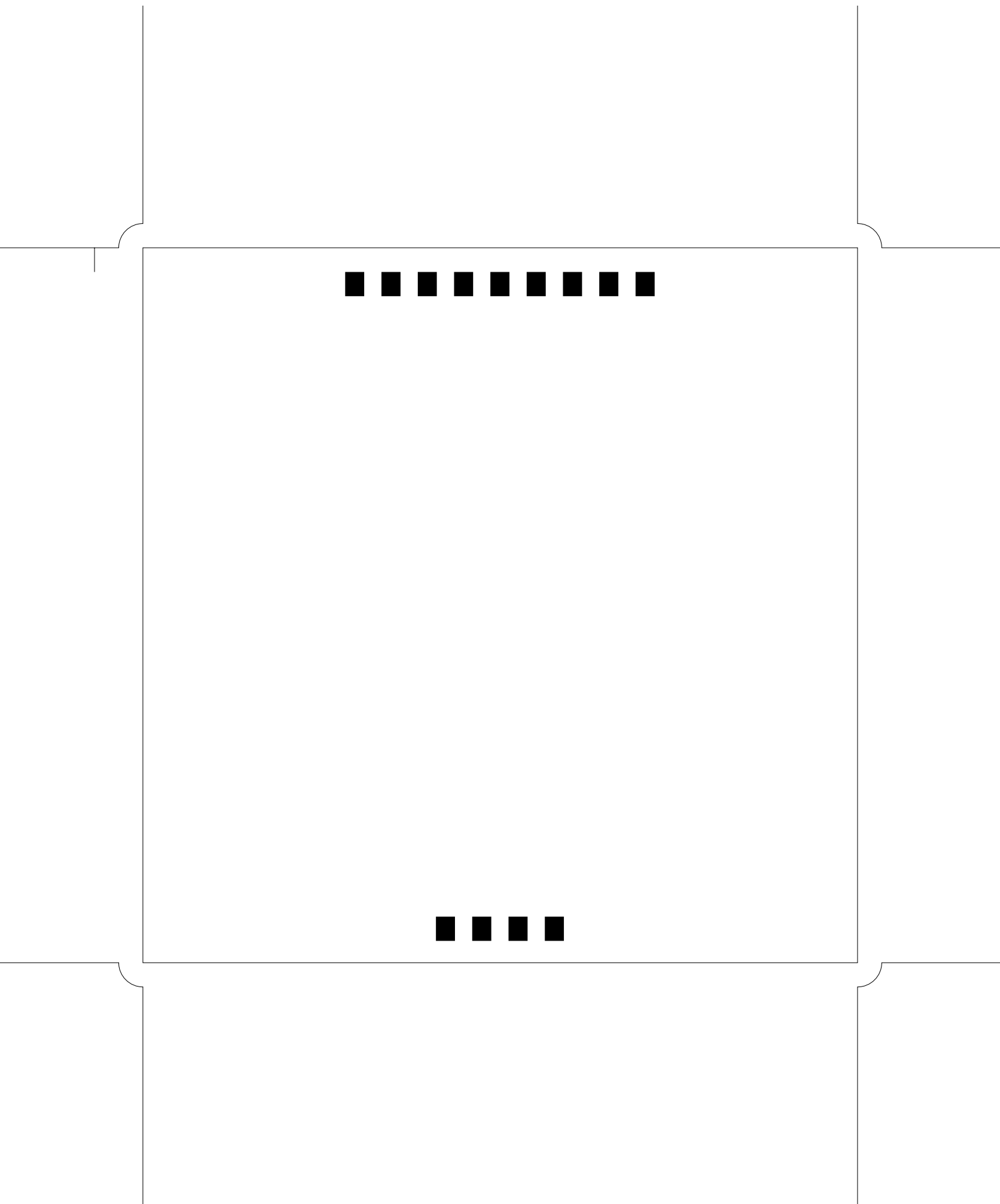


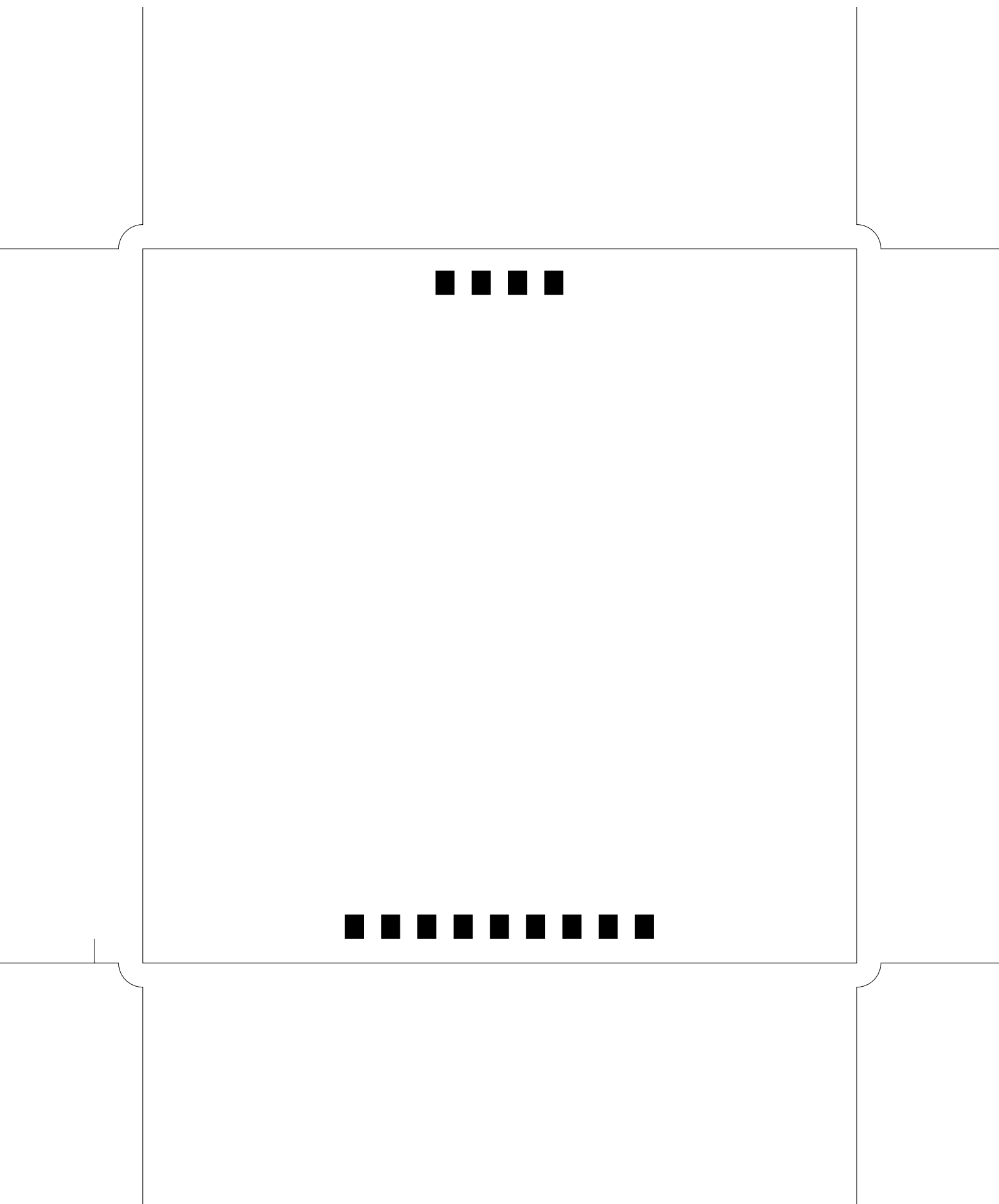


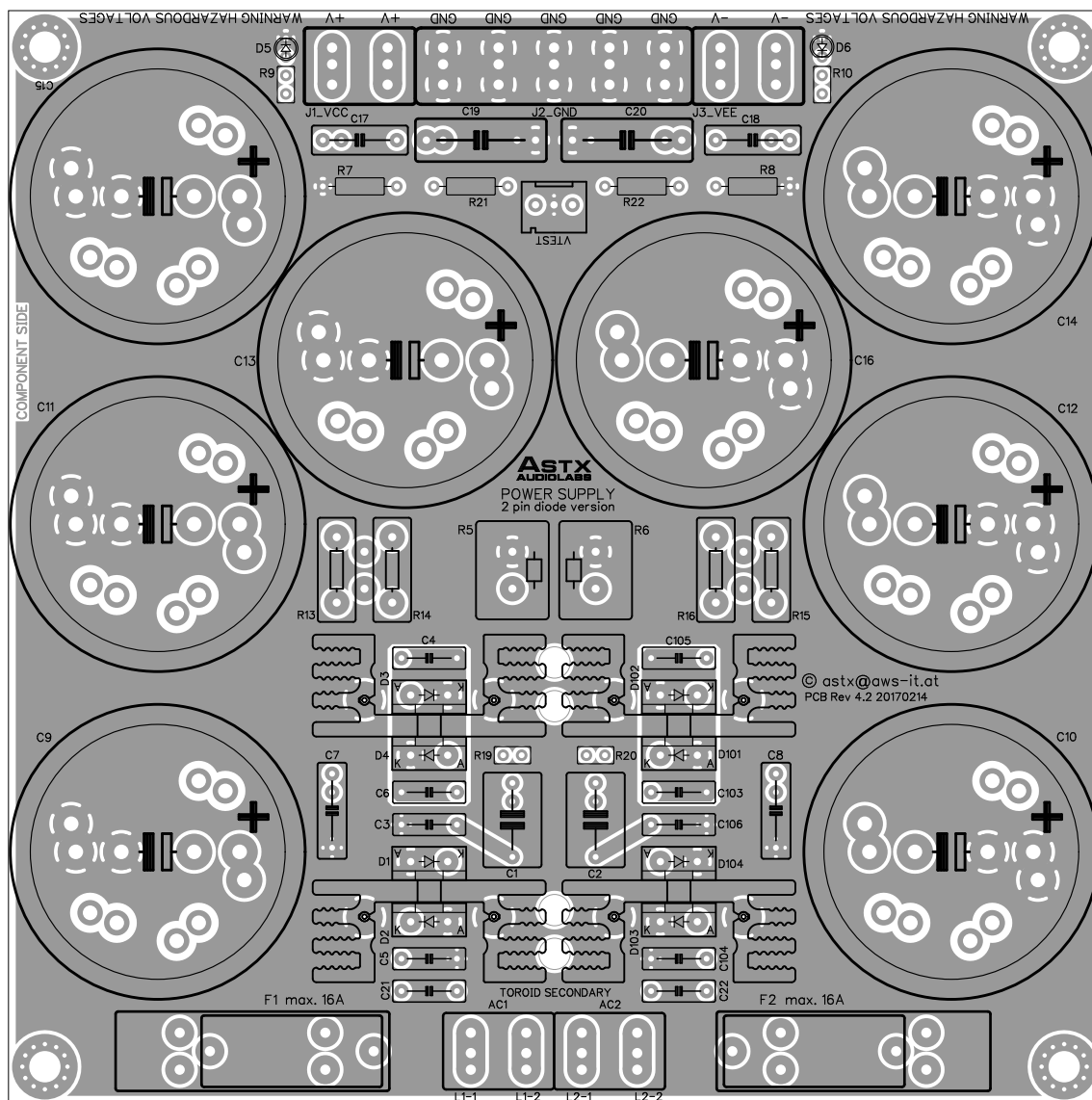


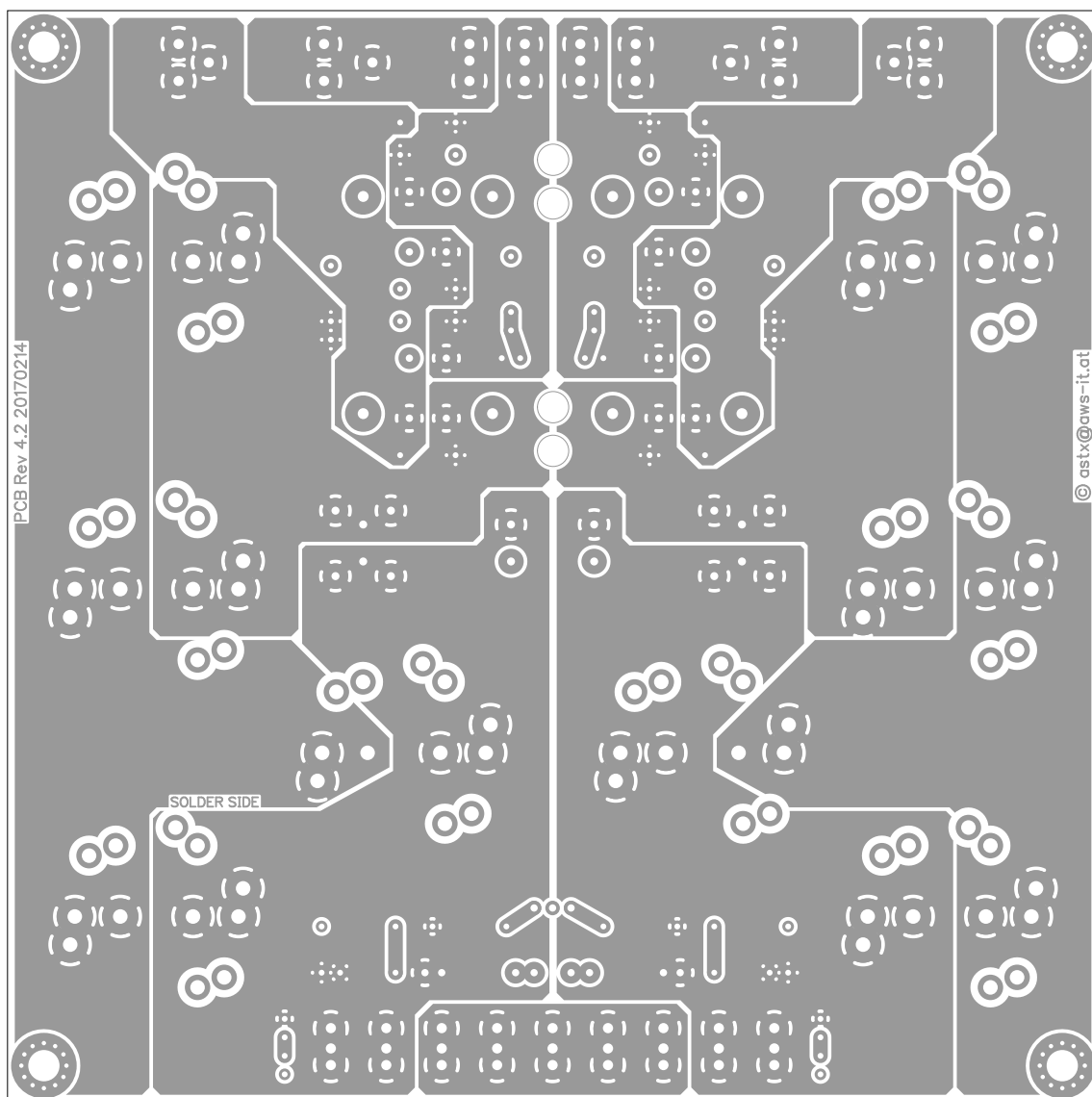












There are 8 different drill sizes used in this layout, 312 holes total

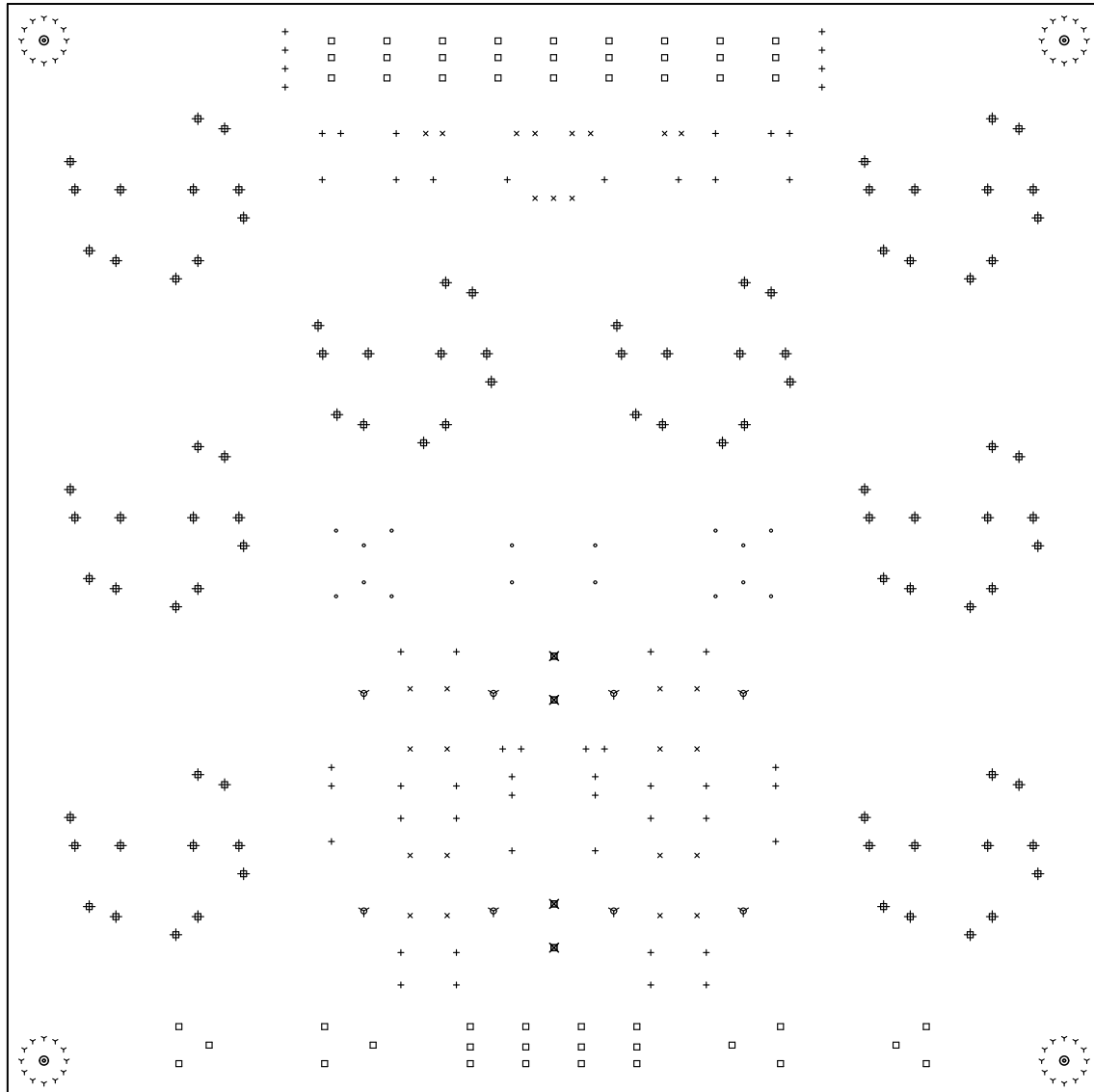
Symbol	Diam. (Inch)	Count	Plated?
⋈	0.024	48	YES
+	0.031	58	YES
×	0.039	27	YES
°	0.043	16	YES
□	0.055	51	YES
⌘	0.059	8	YES
⊕	0.079	96	YES
⊗	0.170	4	NO
⊙	0.170	4	YES

Title: (unknown) - Fabrication Drawing

Author: astx@aws-it.at

Date: Die 14 Feb 2017 09:03:02 GMT UTC

Maximum Dimensions: 5905.511811 mils wide, 5905.511811 mils high



Board outline is the centerline of this 8.000000 mil rectangle - 0,0 to 5905.511811,5905.511811 mils