

# 1. Table of Contents (This Page)

Created on Sun Jan 29 17:08:53 2017

2. component

3. solder

4. plated-drill

5. unplated-drill

6. componentmask

7. soldermask

8. topsilk

9. bottomsilk

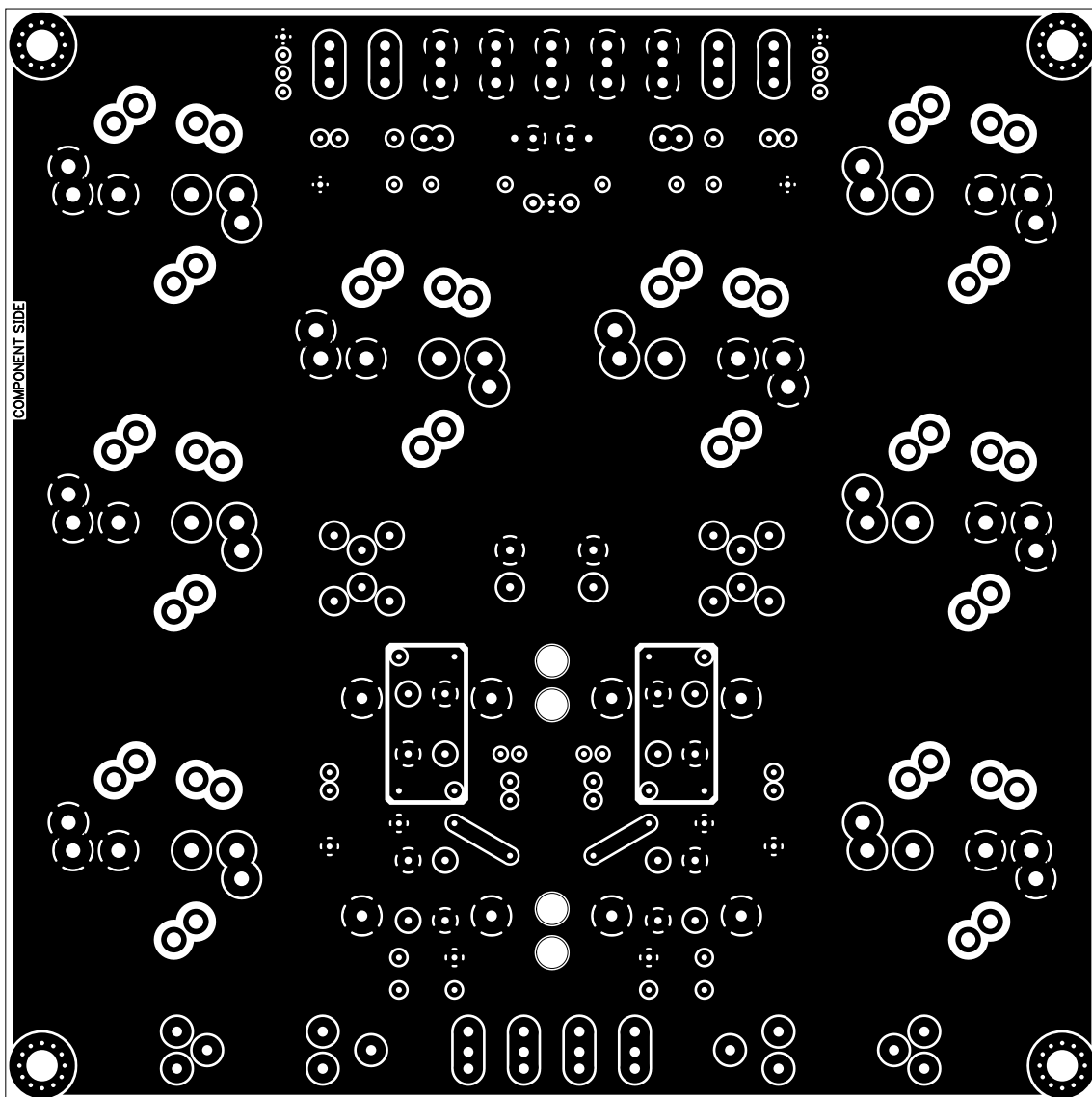
10. toppaste

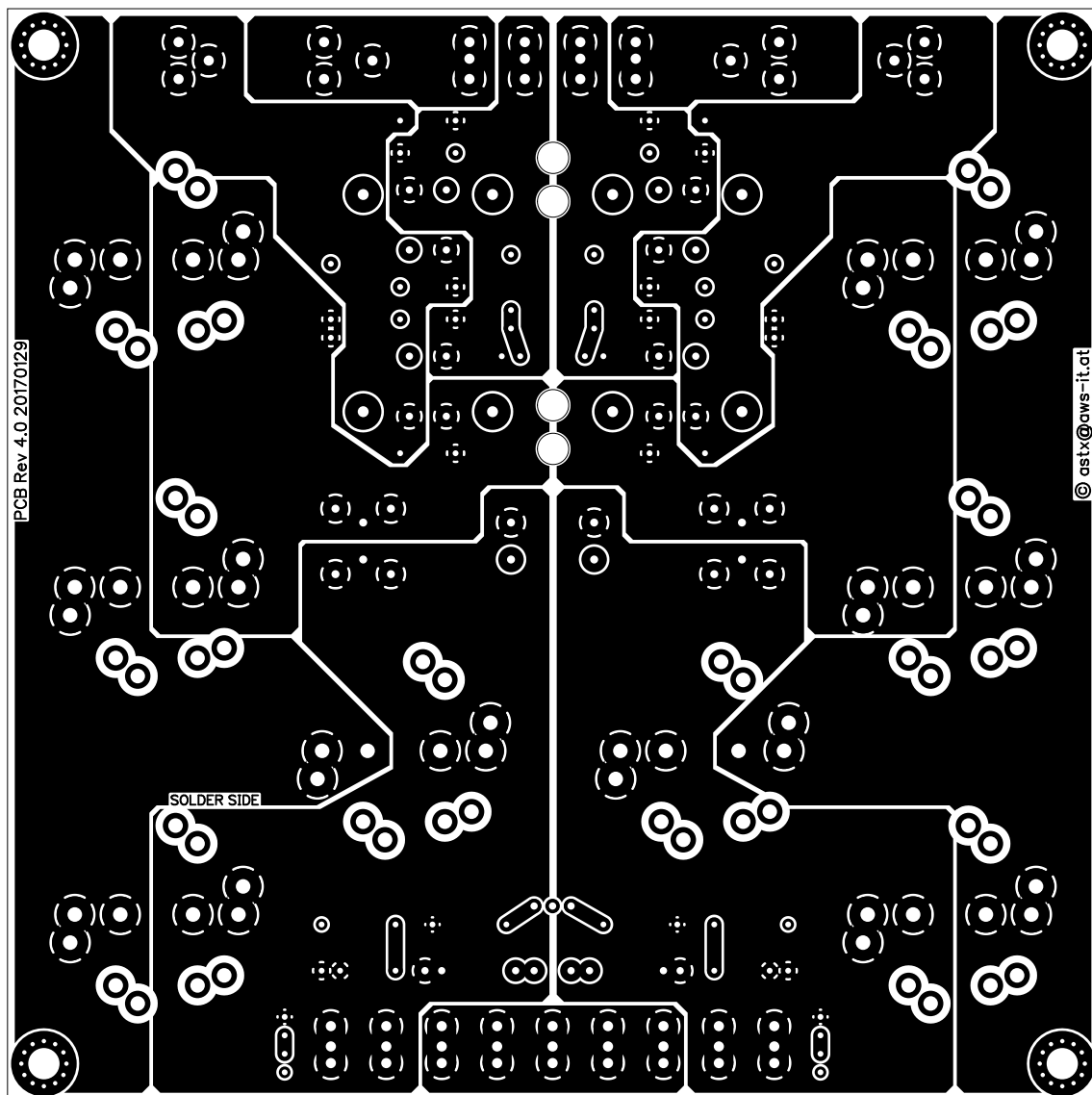
11. bottompaste

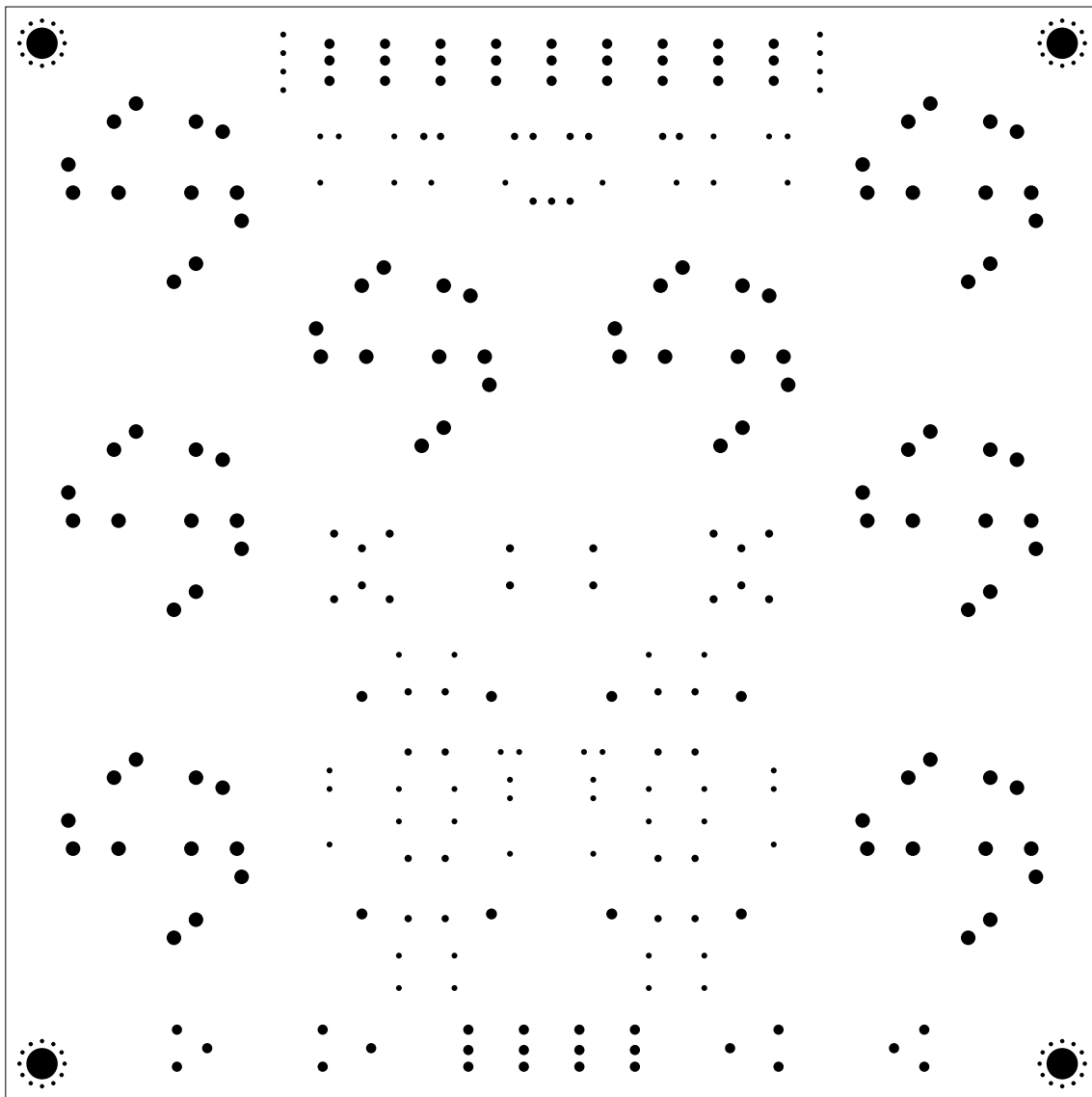
12. topassembly

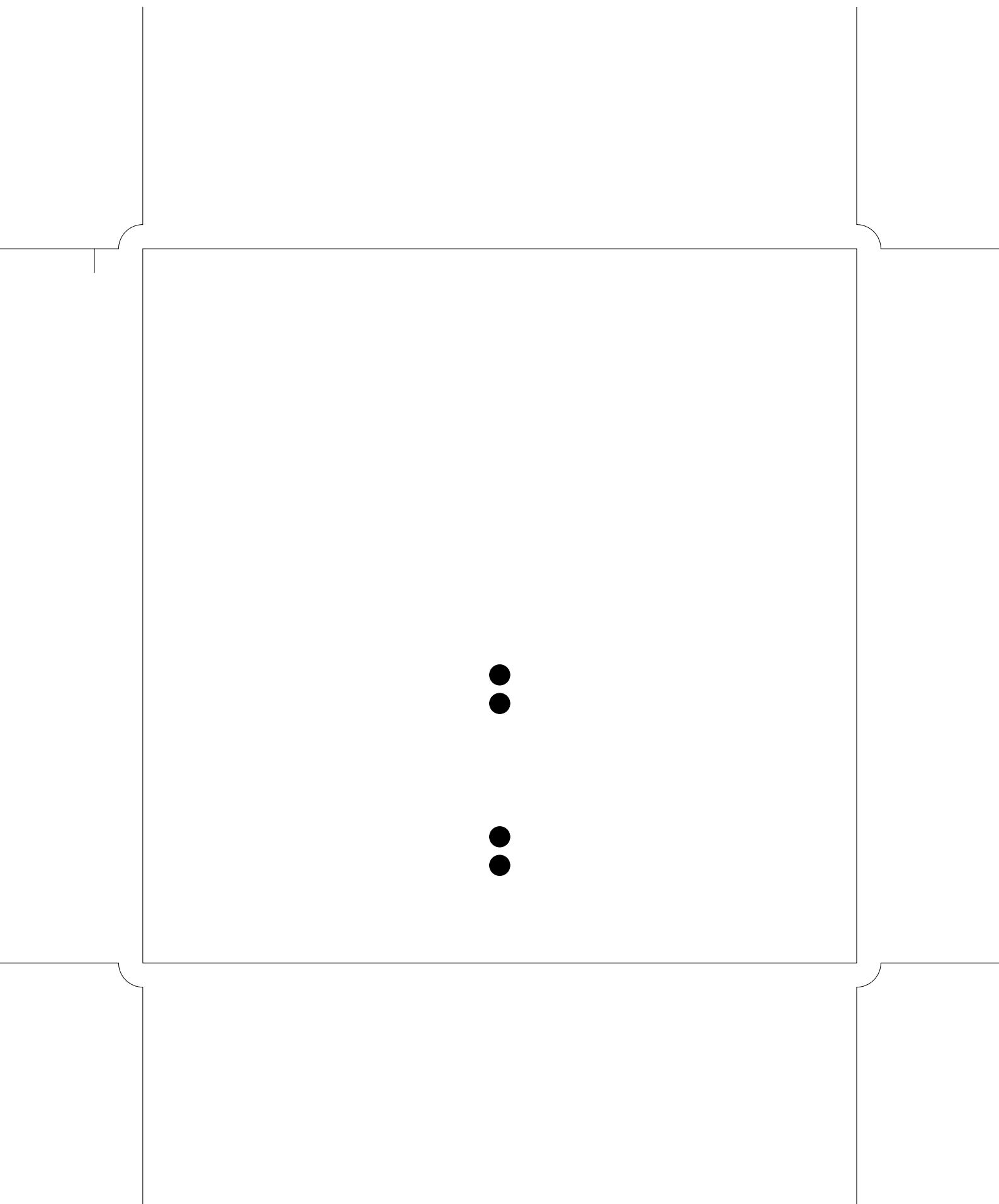
13. bottomassembly

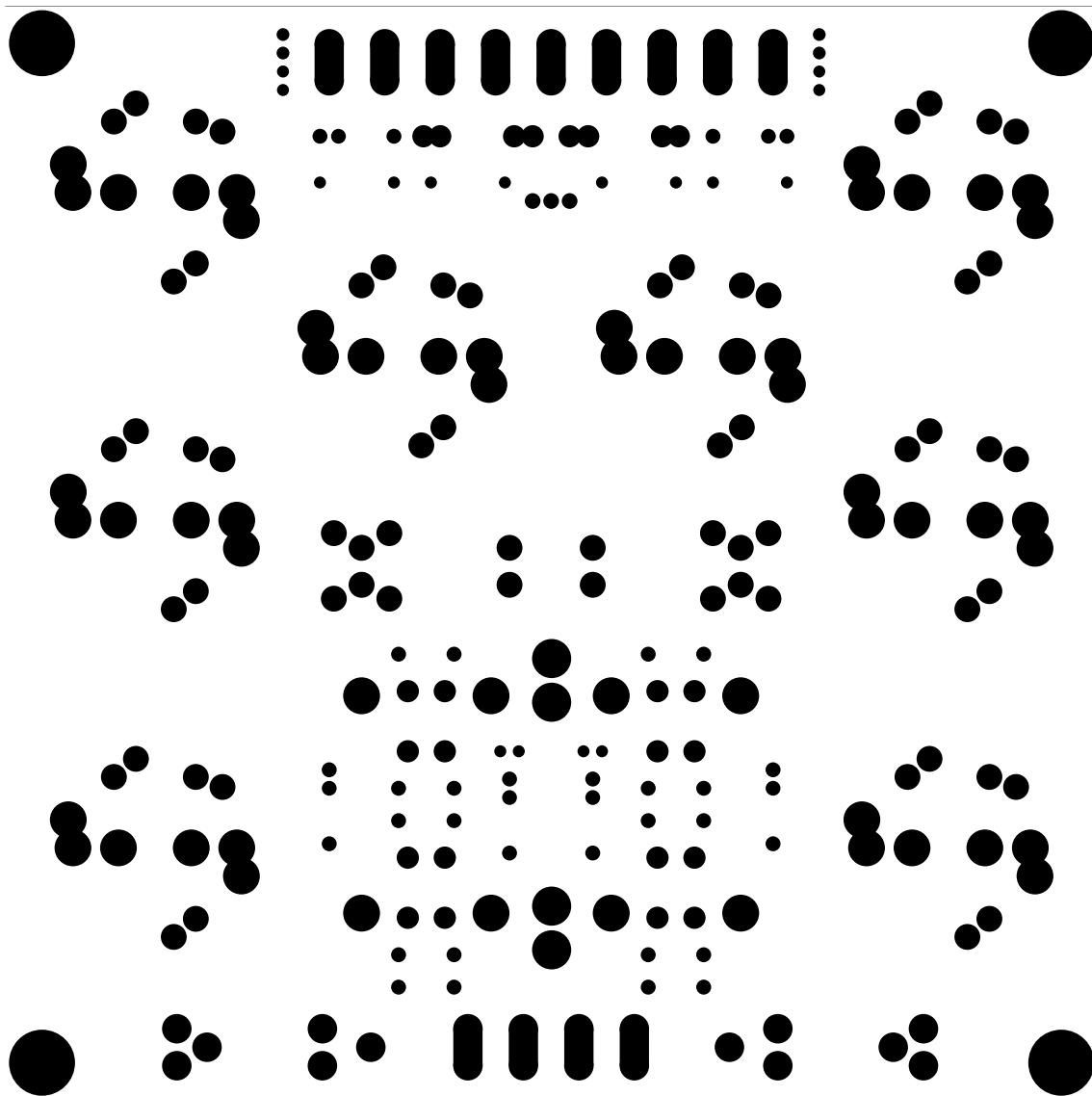
14. fab

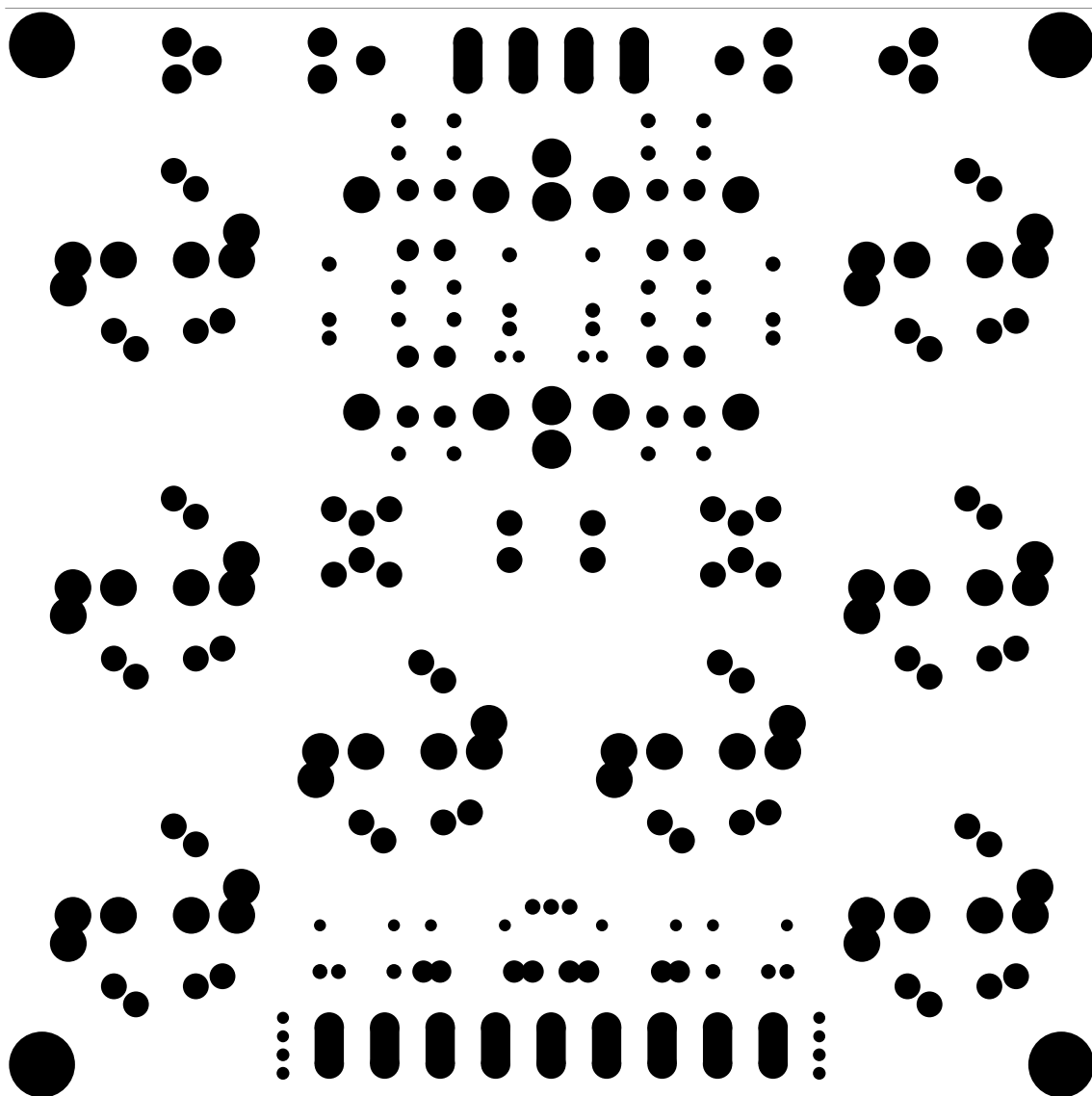


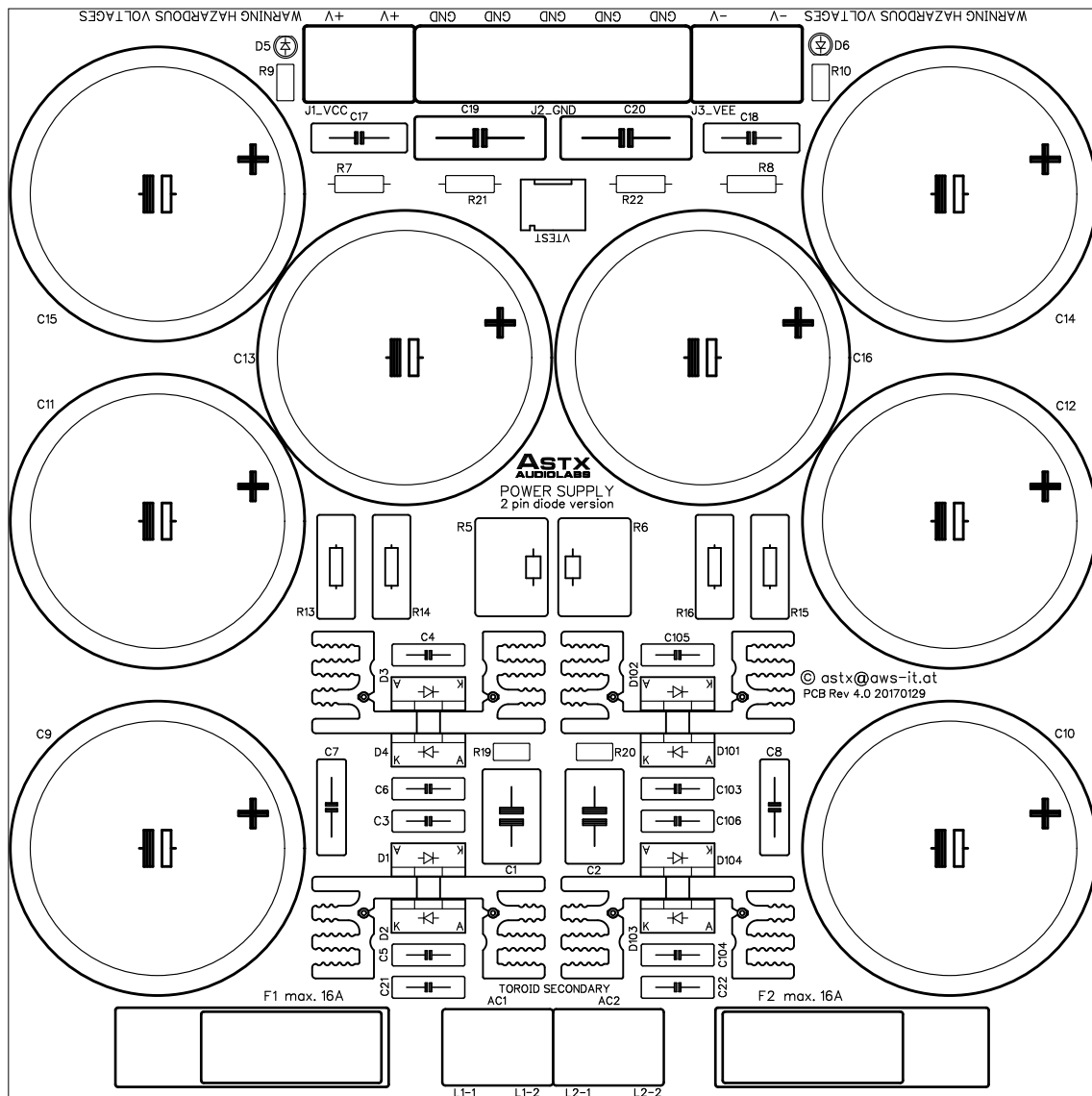






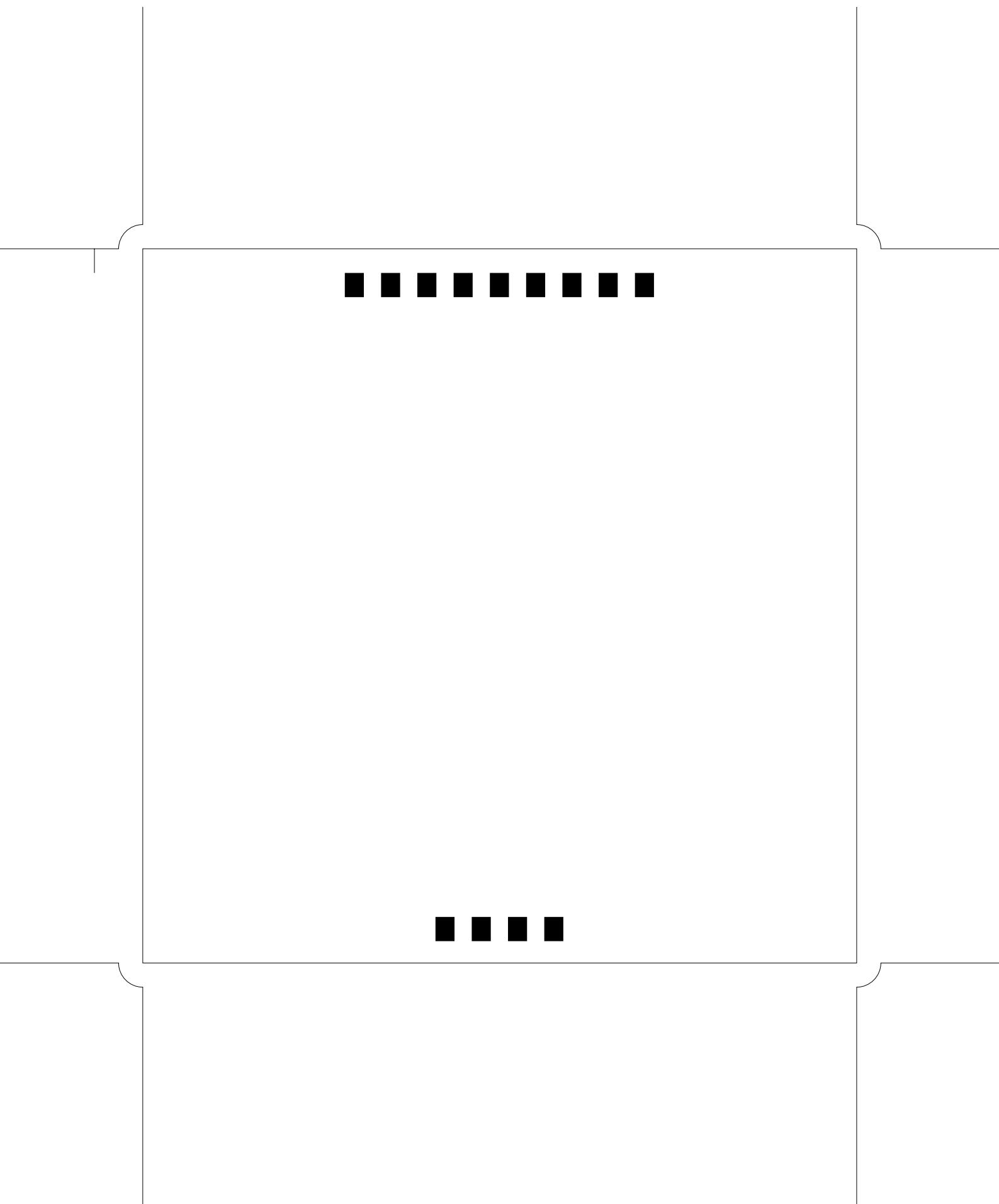


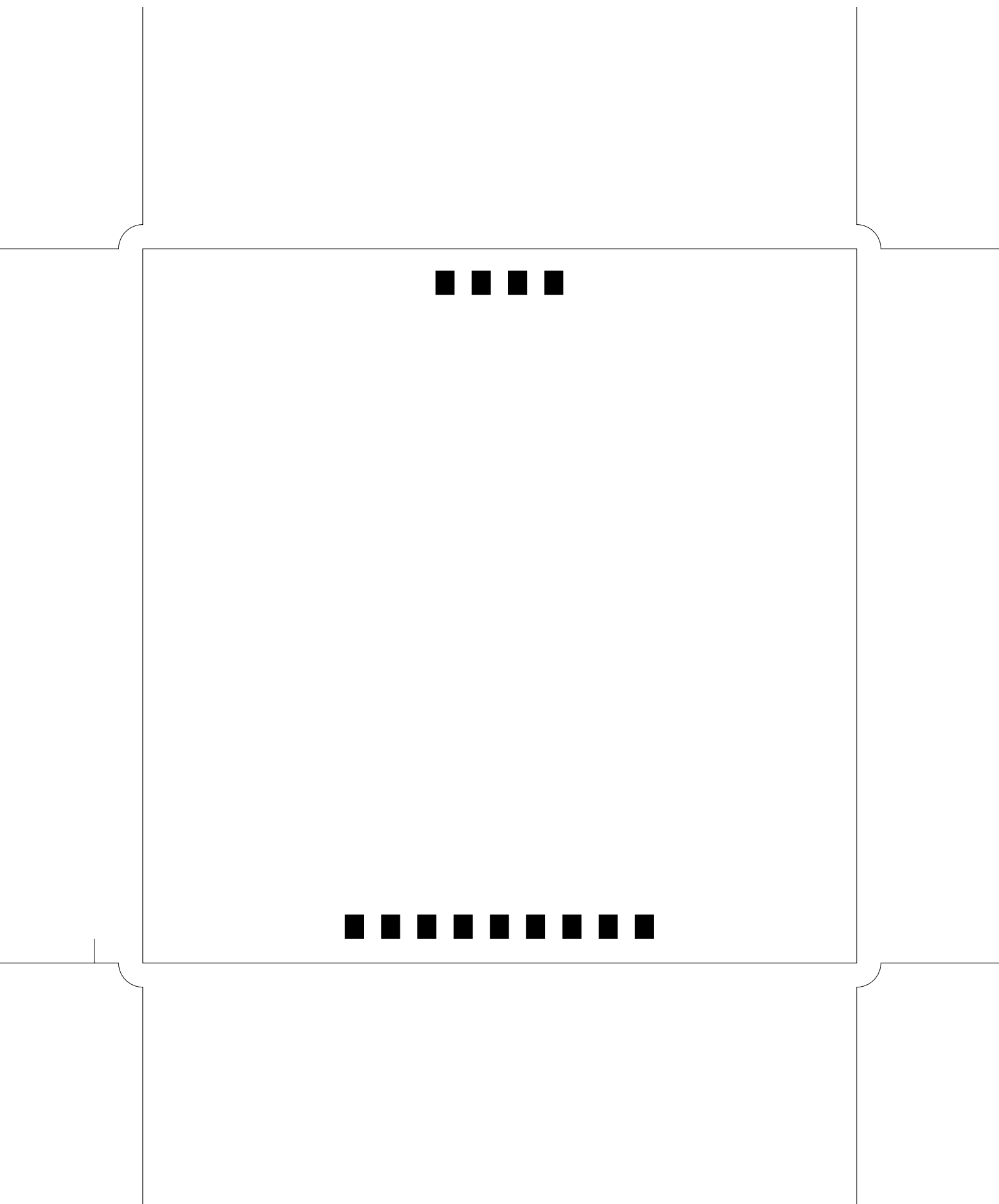


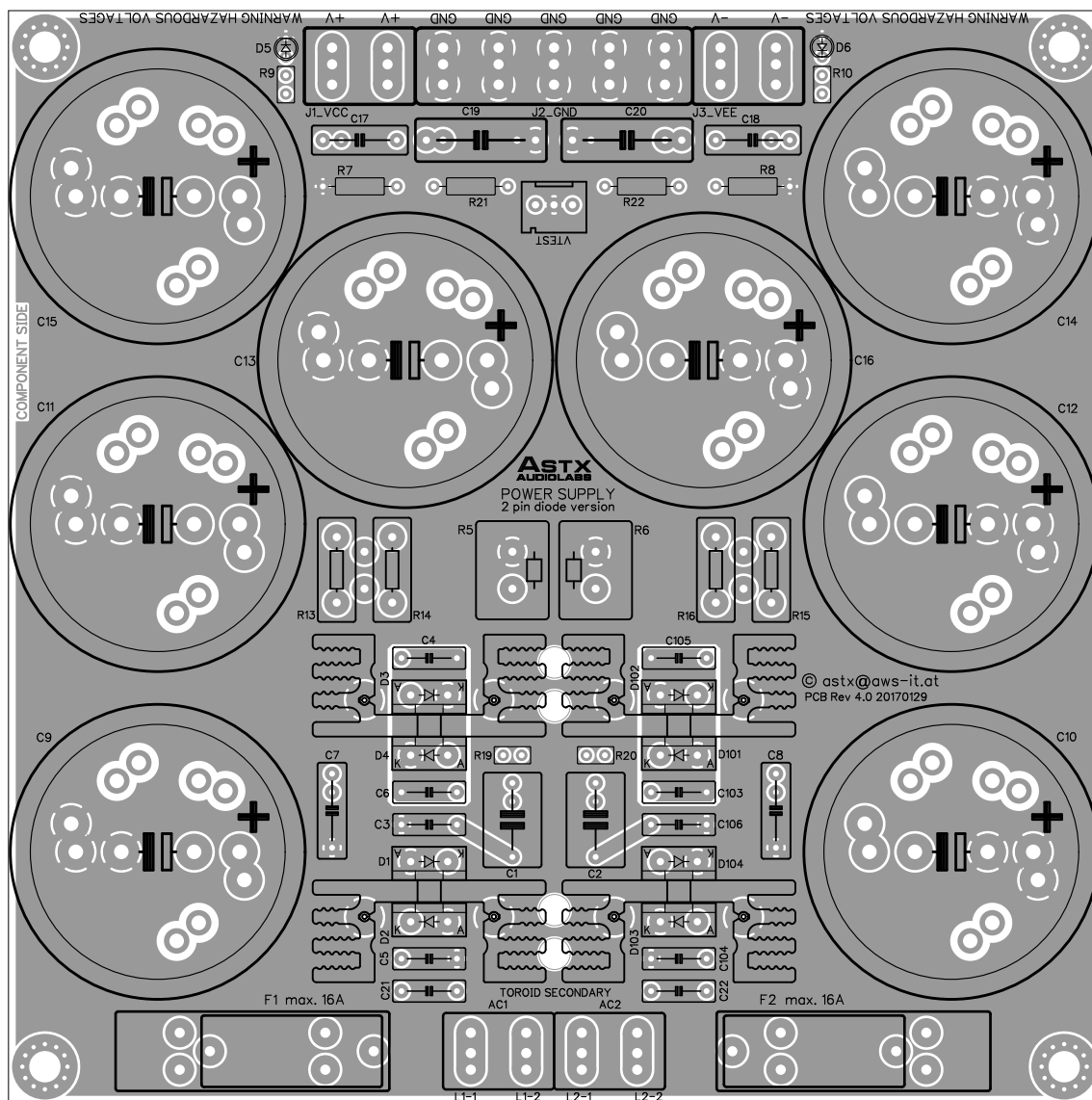


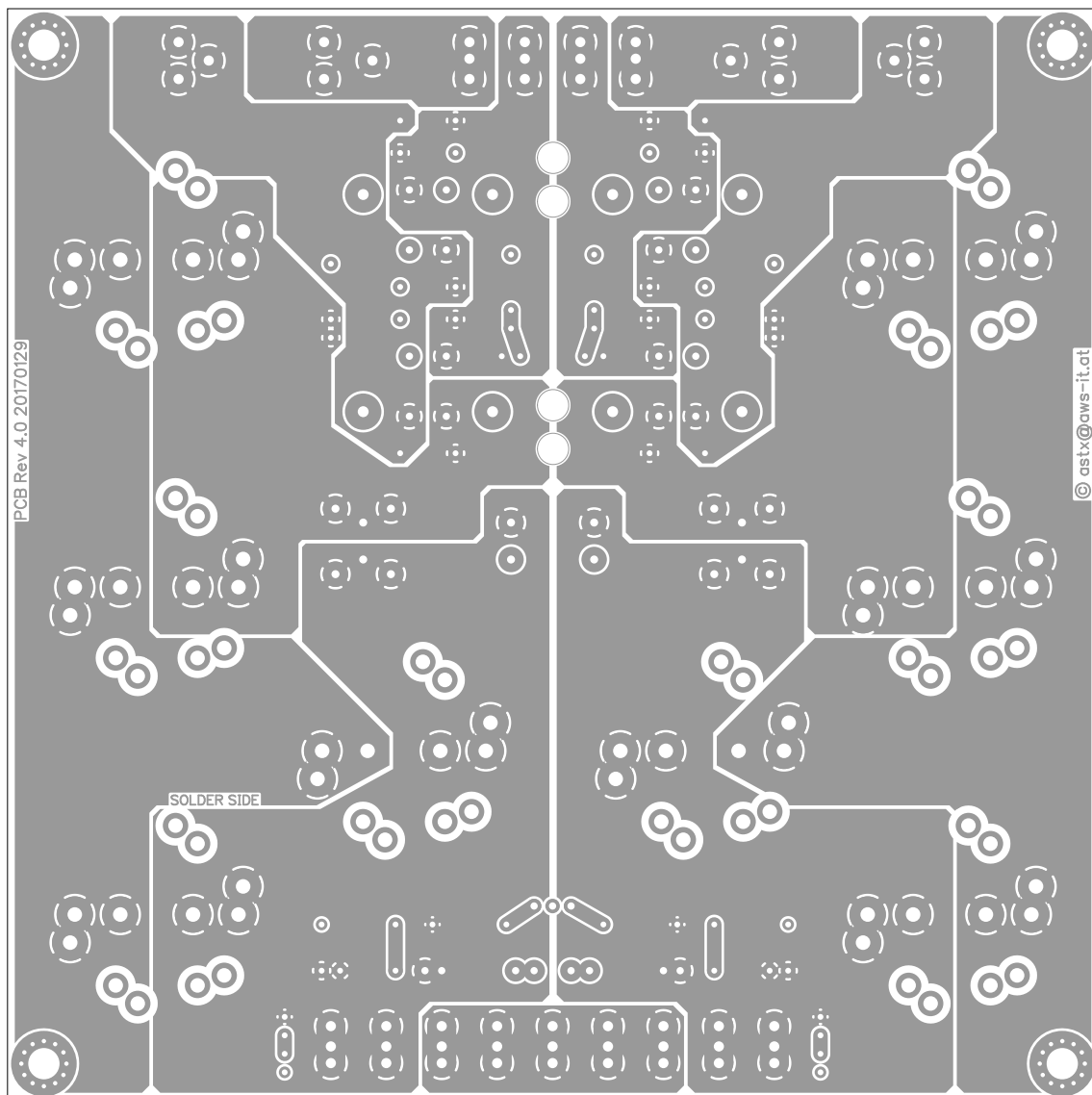








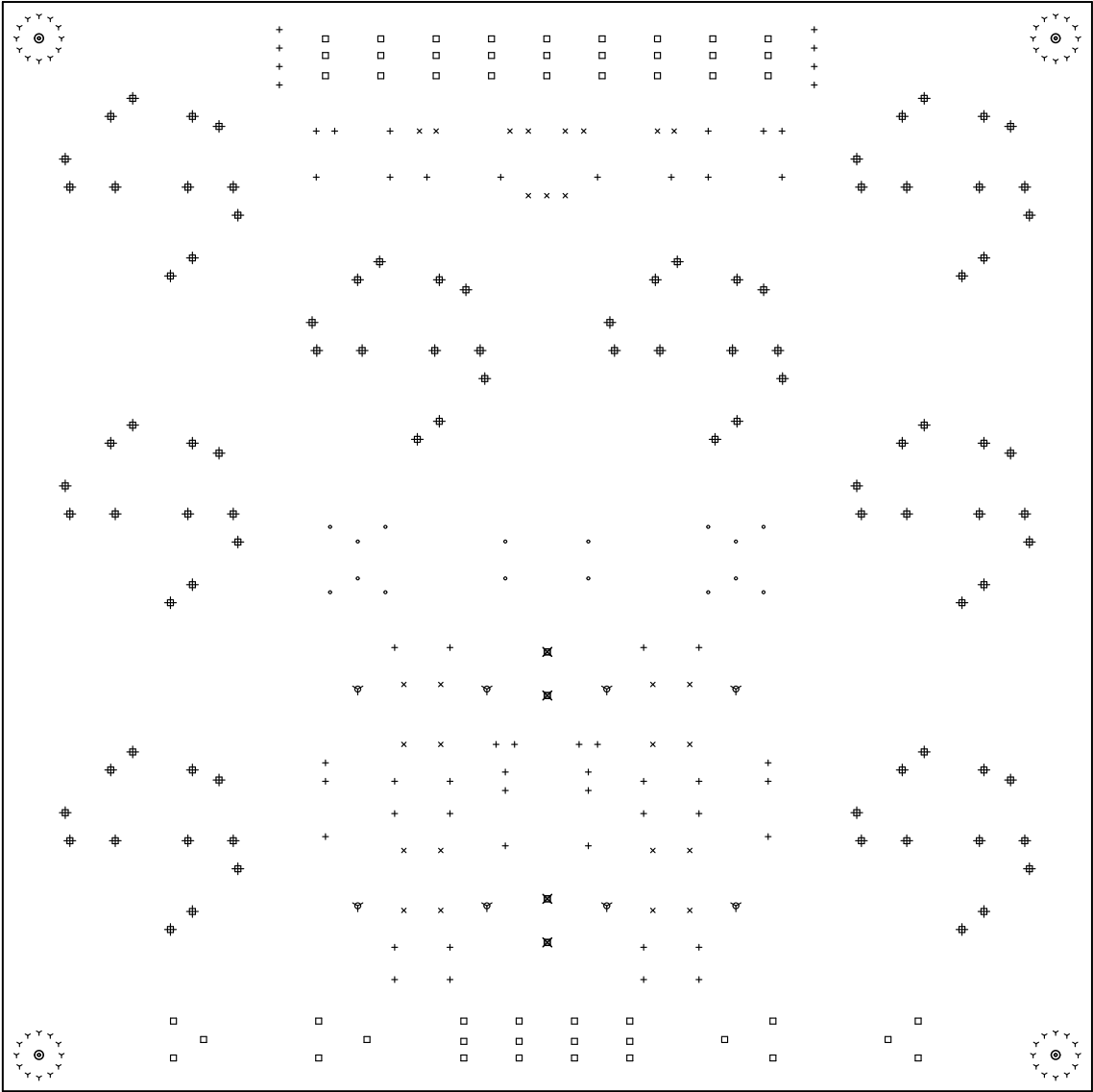




There are 8 different drill sizes used in this layout, 312 holes total

Symbol	Diam. (Inch)	Count	Plated?
⌵	0.024	48	YES
+	0.031	58	YES
×	0.039	27	YES
•	0.043	16	YES
□	0.055	51	YES
⌵	0.059	8	YES
⊕	0.079	96	YES
⊗	0.170	4	NO
⊙	0.170	4	YES

Title: (unknown) - Fabrication Drawing  
Author: astx@aws-it.at  
Date: Son 29 Jun 2017 16:08:53 GMT UTC  
Maximum Dimensions: 5905.511811 mils wide, 5905.511811 mils high



Board outline is the centerline of this 8.000000 mil rectangle - 0,0 to 5905.511811,5905.511811 mils