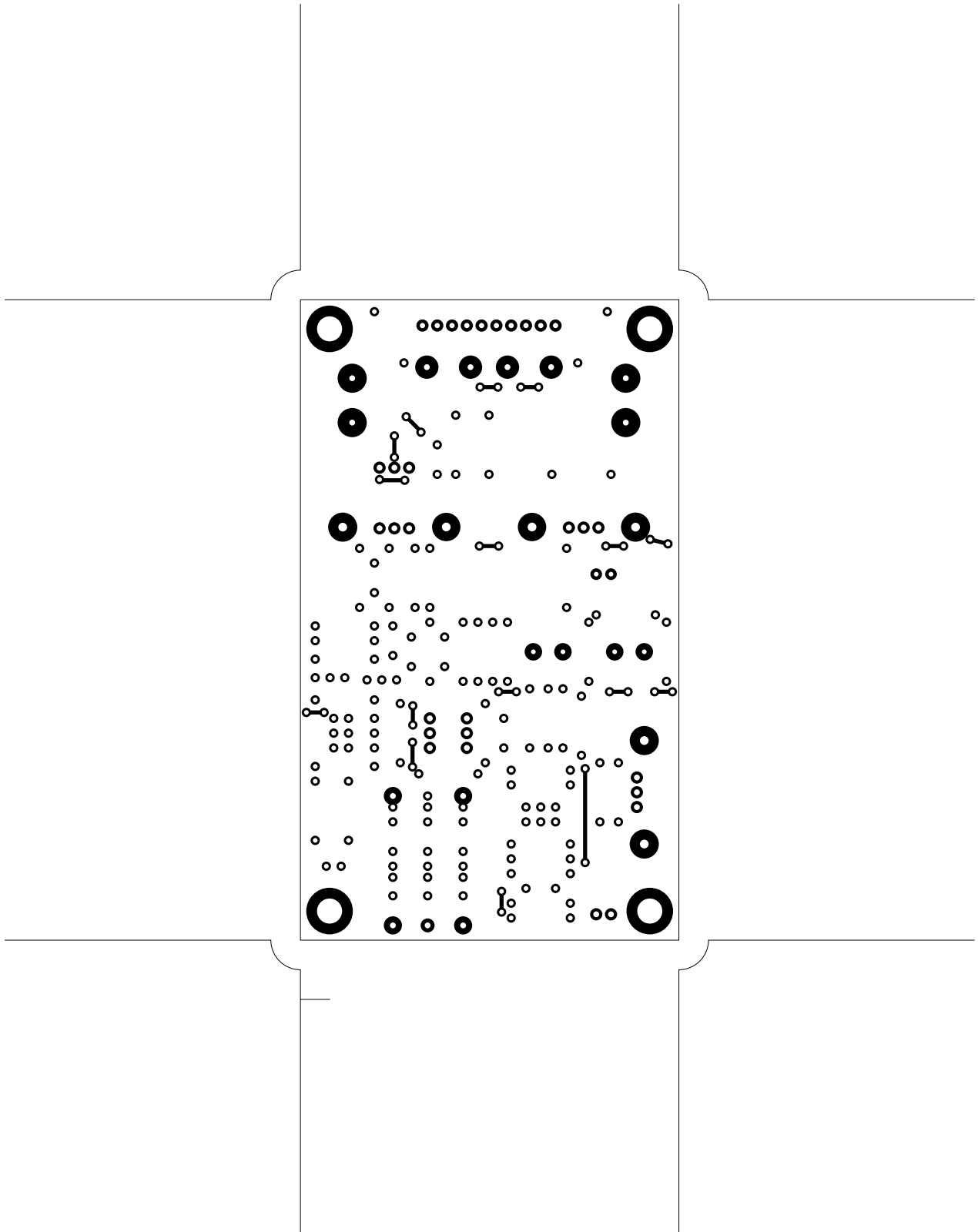
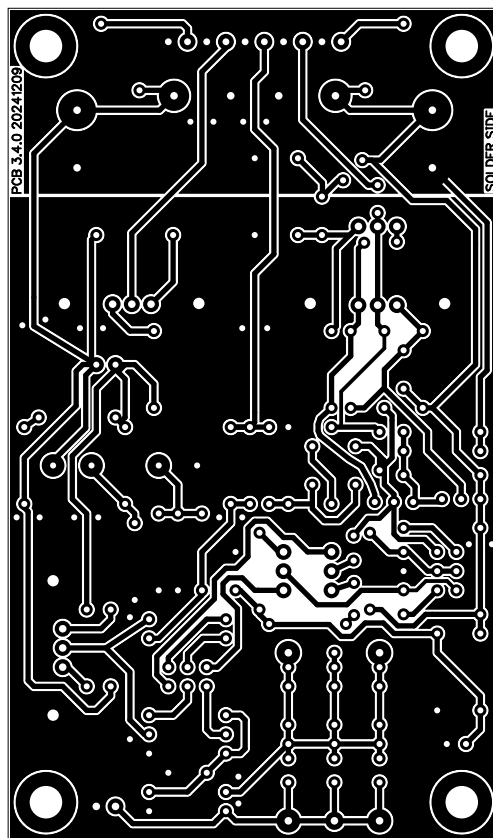


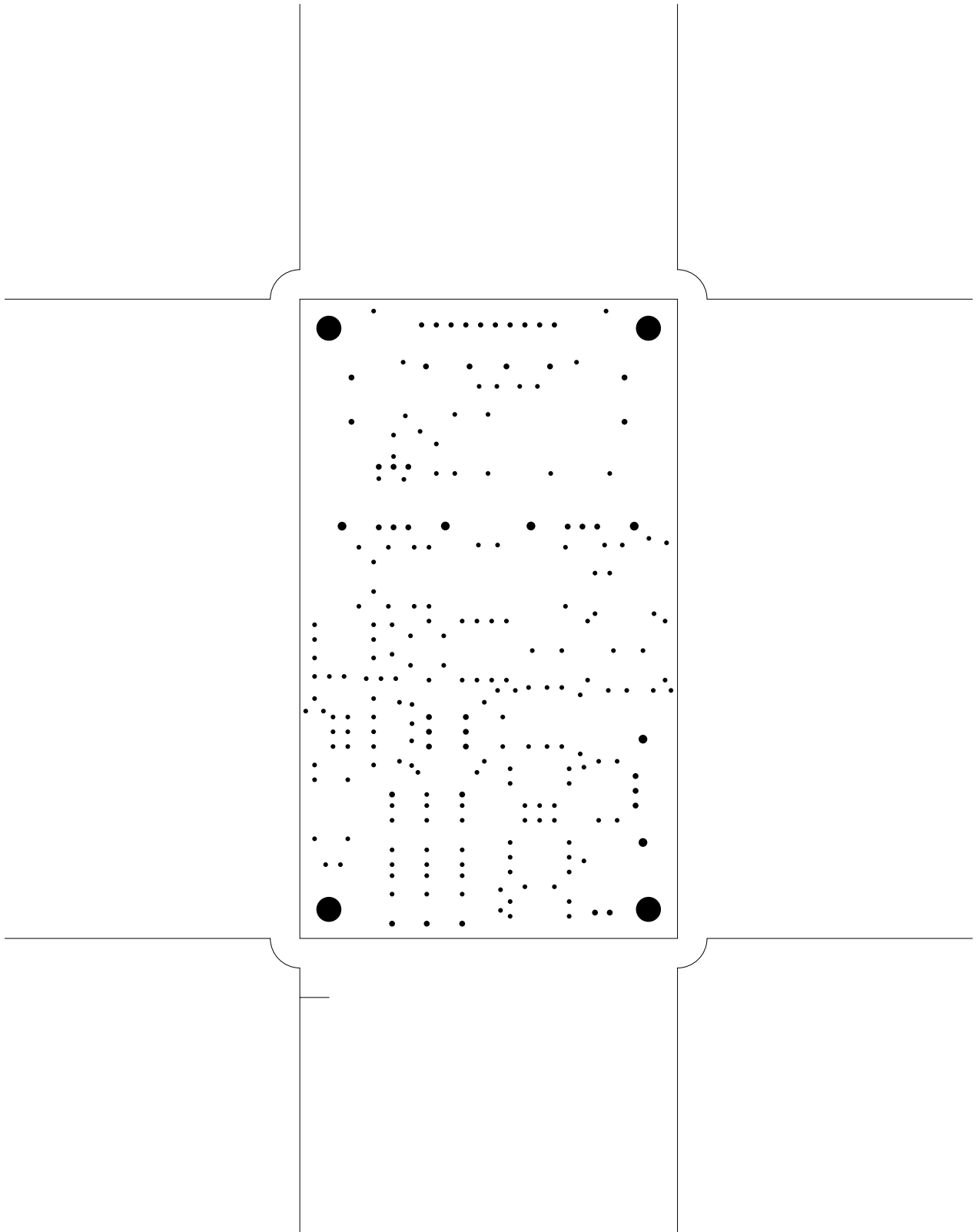
1. Table of Contents (This Page)

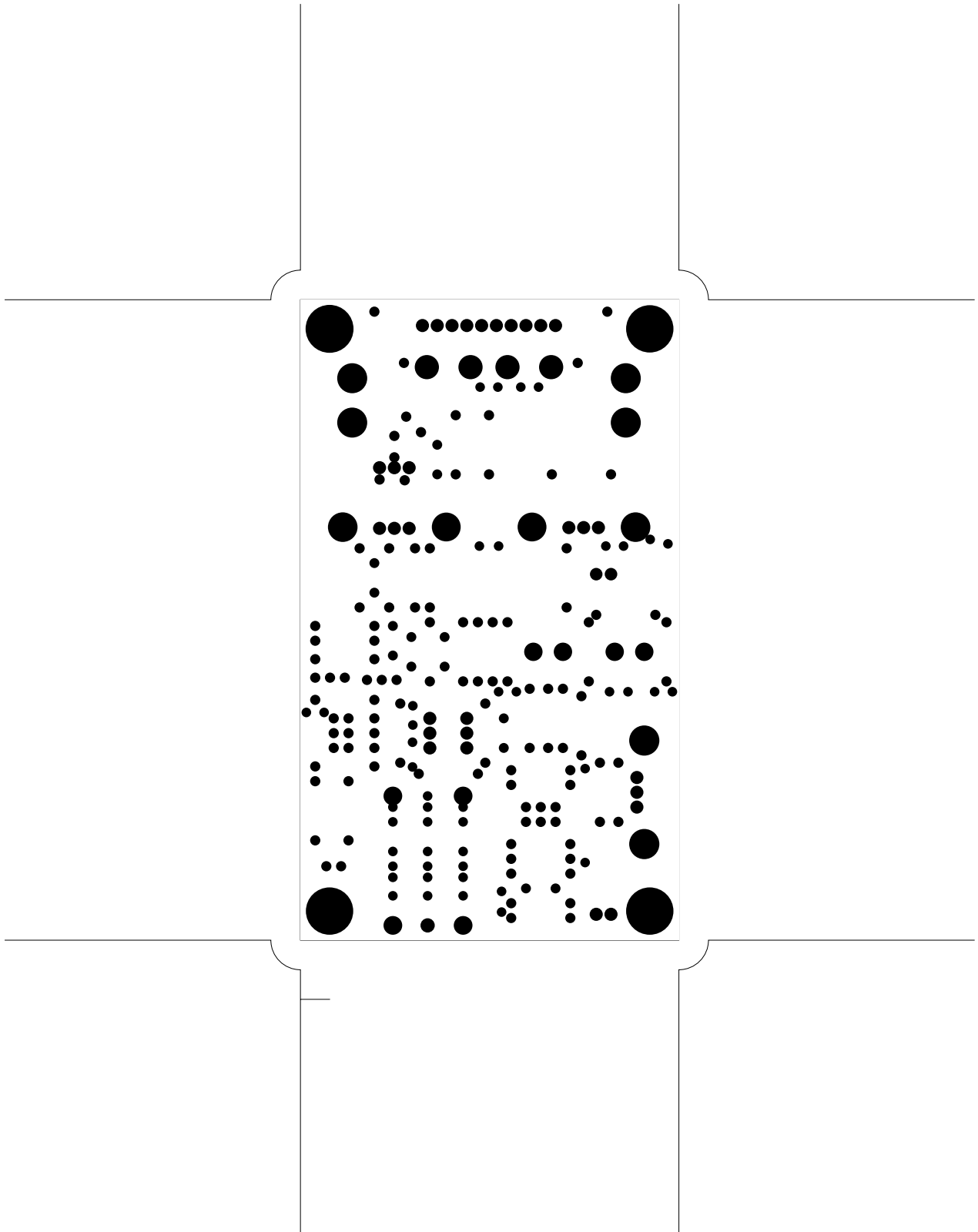
Created on Mon Dec 9 13:29:29 2024

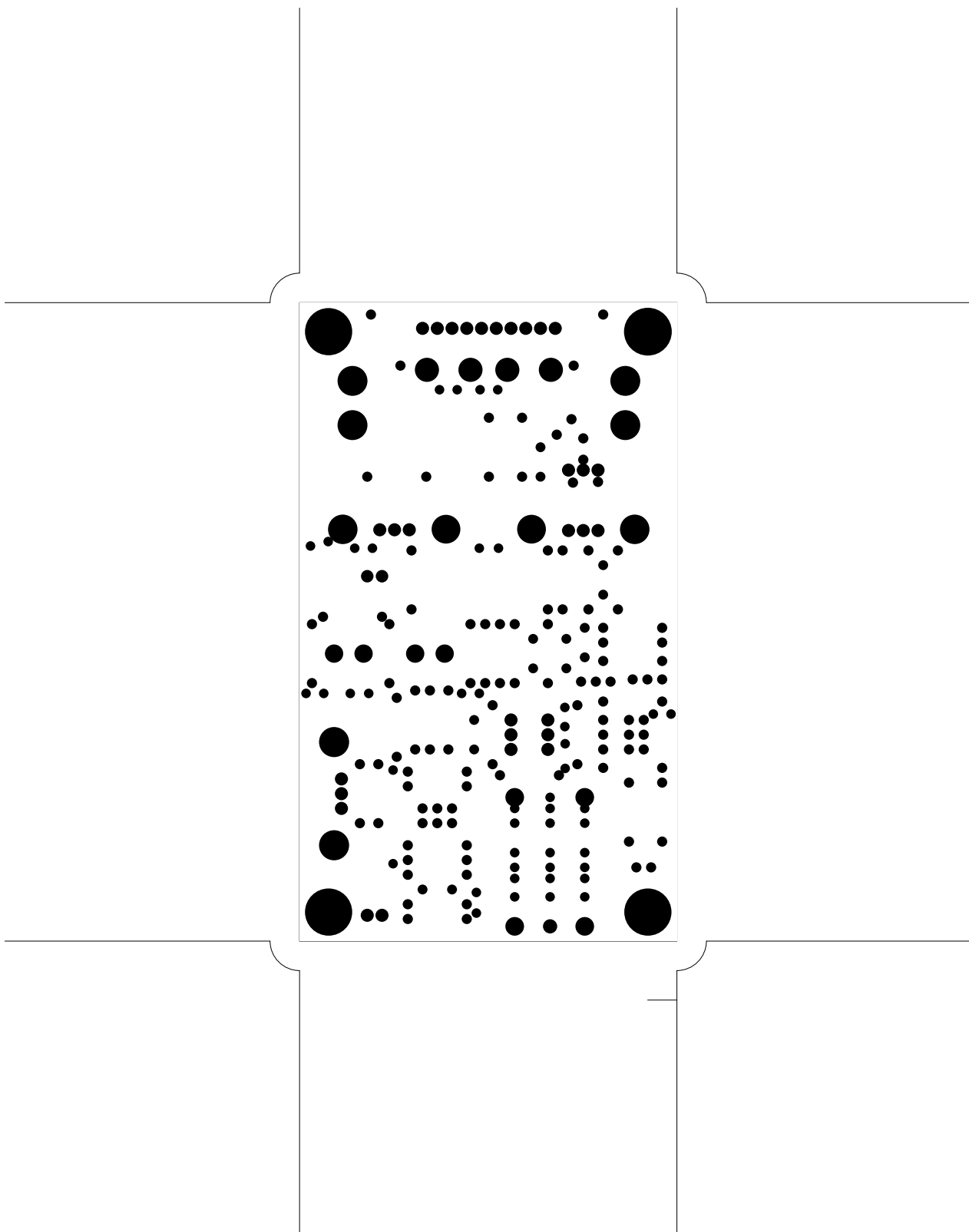
2. component
3. solder
4. plated-drill
5. componentmask
6. soldermask
7. topsilk
8. bottomsilk
9. topassembly
10. bottomassembly
11. fab

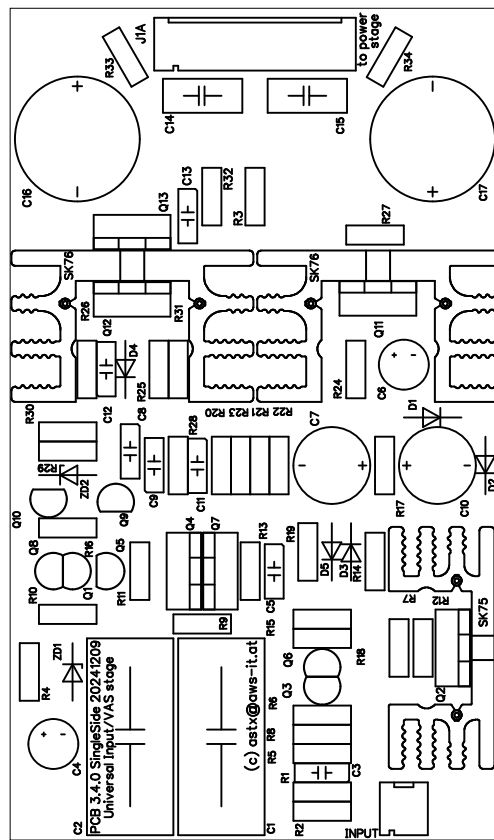


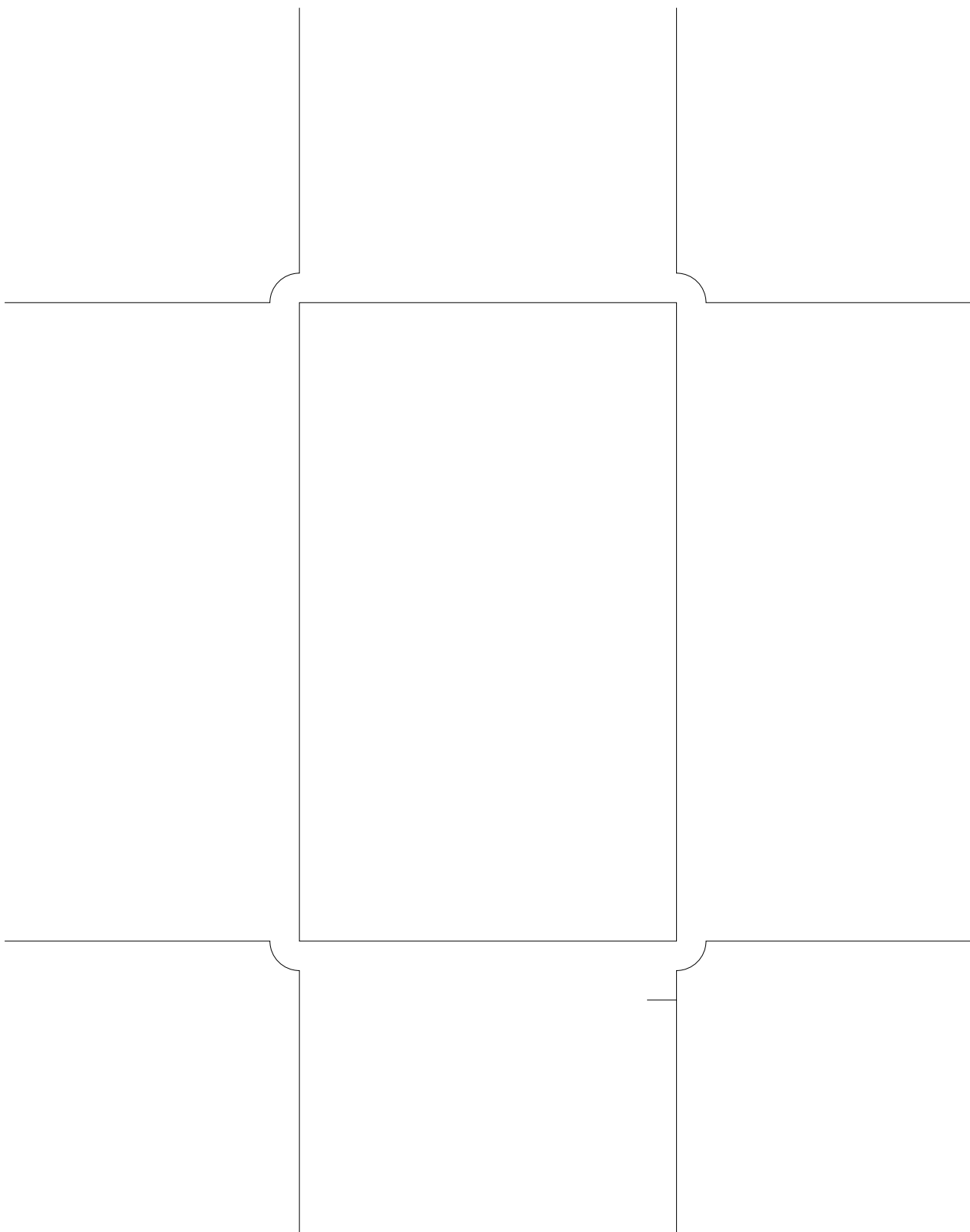


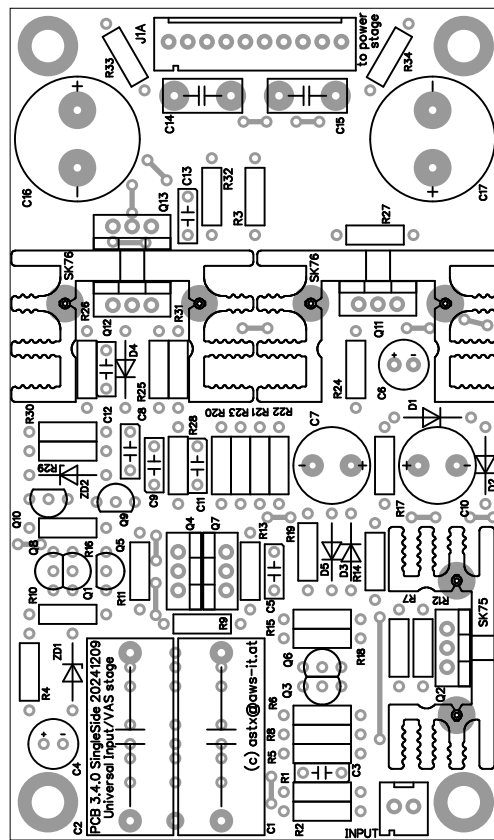


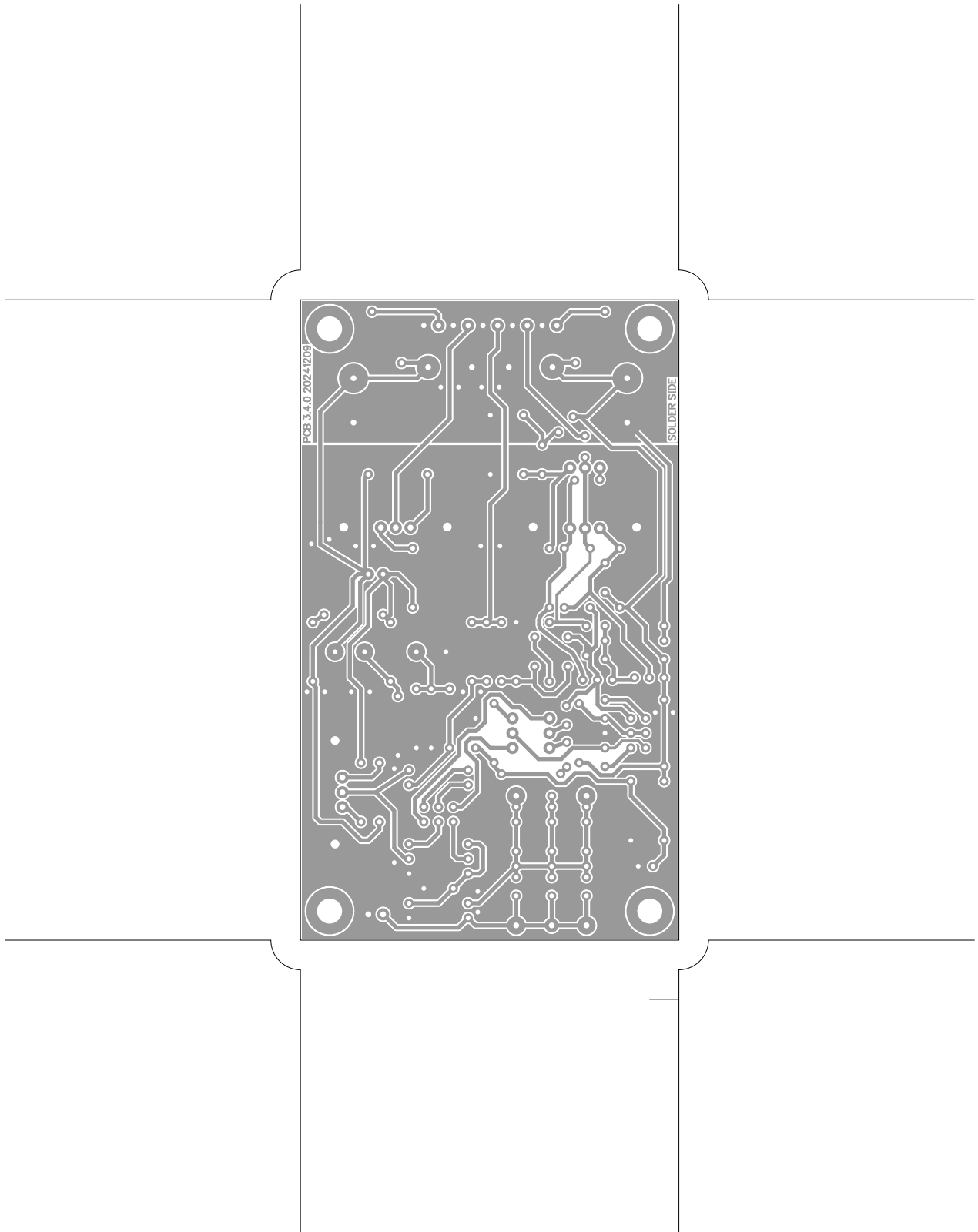






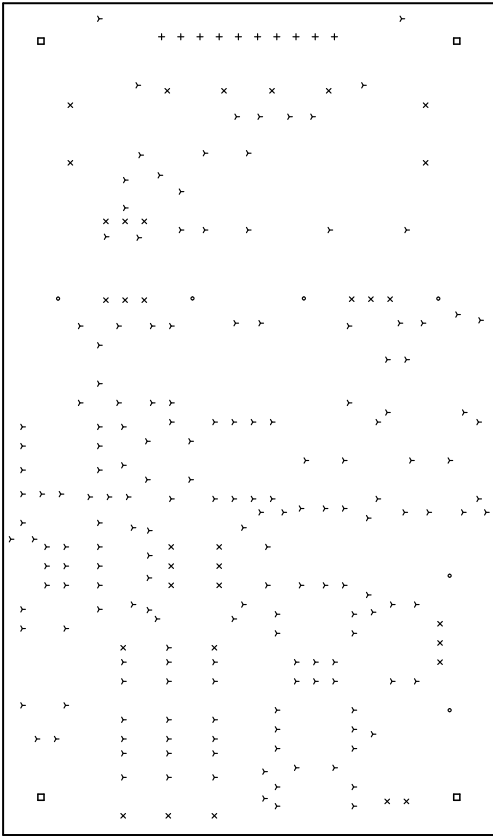






There are 5 different drill sizes used in this layout, 229 holes total

Symbol	Diam. (Inch)	Count	Plated?	
y	0.031	176	YES	
+	0.035	10	YES	Title: (unknown) - Fabrication Drawing
x	0.039	33	YES	Author: astx@aws-it.at
o	0.059	6	YES	Date: Mon Dec 9 12:29:29 2024 UTC
□	0.169	4	YES	Maximum Dimensions: 4330.708661 mils wide, 2559.055118 mils high



Board outline is the centerline of this 8,000000 mil rectangle - 0.0 to 4330.708661,2559.055118 mils