

# 1. Table of Contents (This Page)

Created on Mon Jun 23 13:30:35 2014

2. component

3. solder

4. plated-drill

5. unplated-drill

6. componentmask

7. soldermask

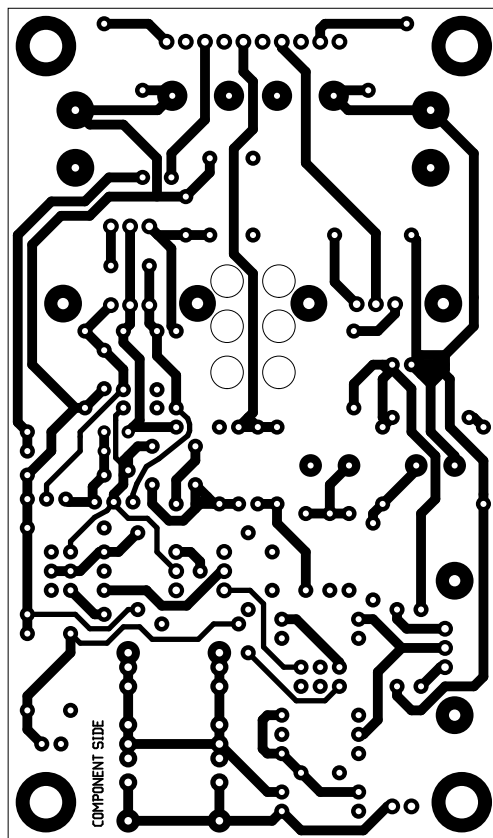
8. topsilk

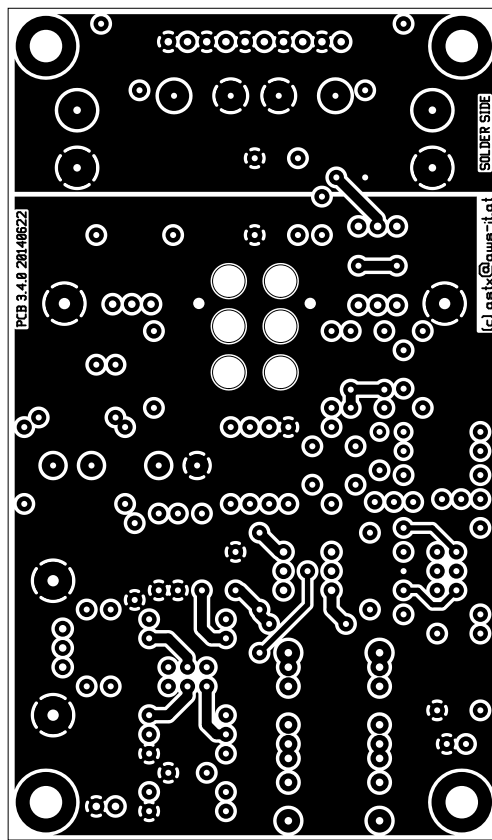
9. bottomsilk

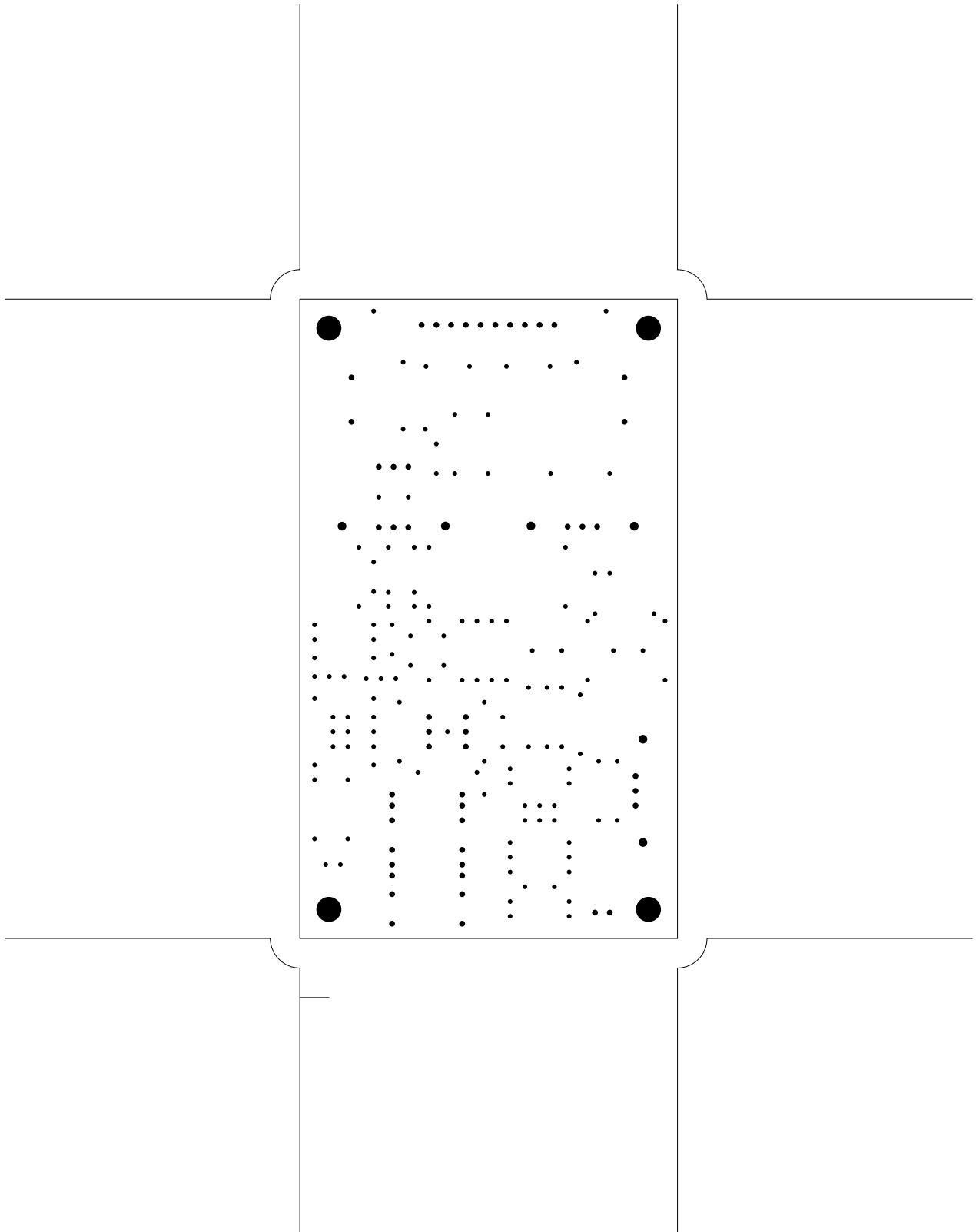
10. topassembly

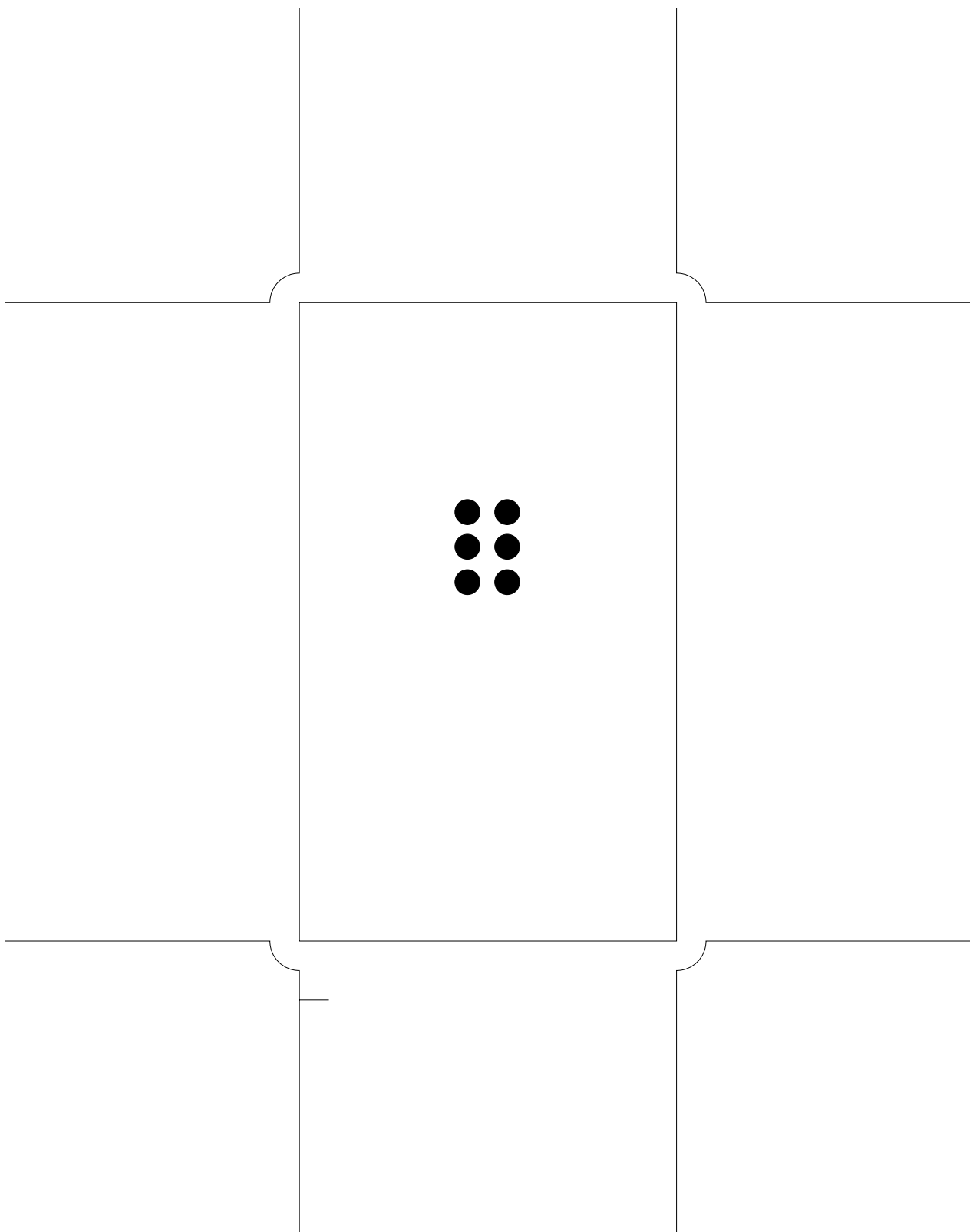
11. bottomassembly

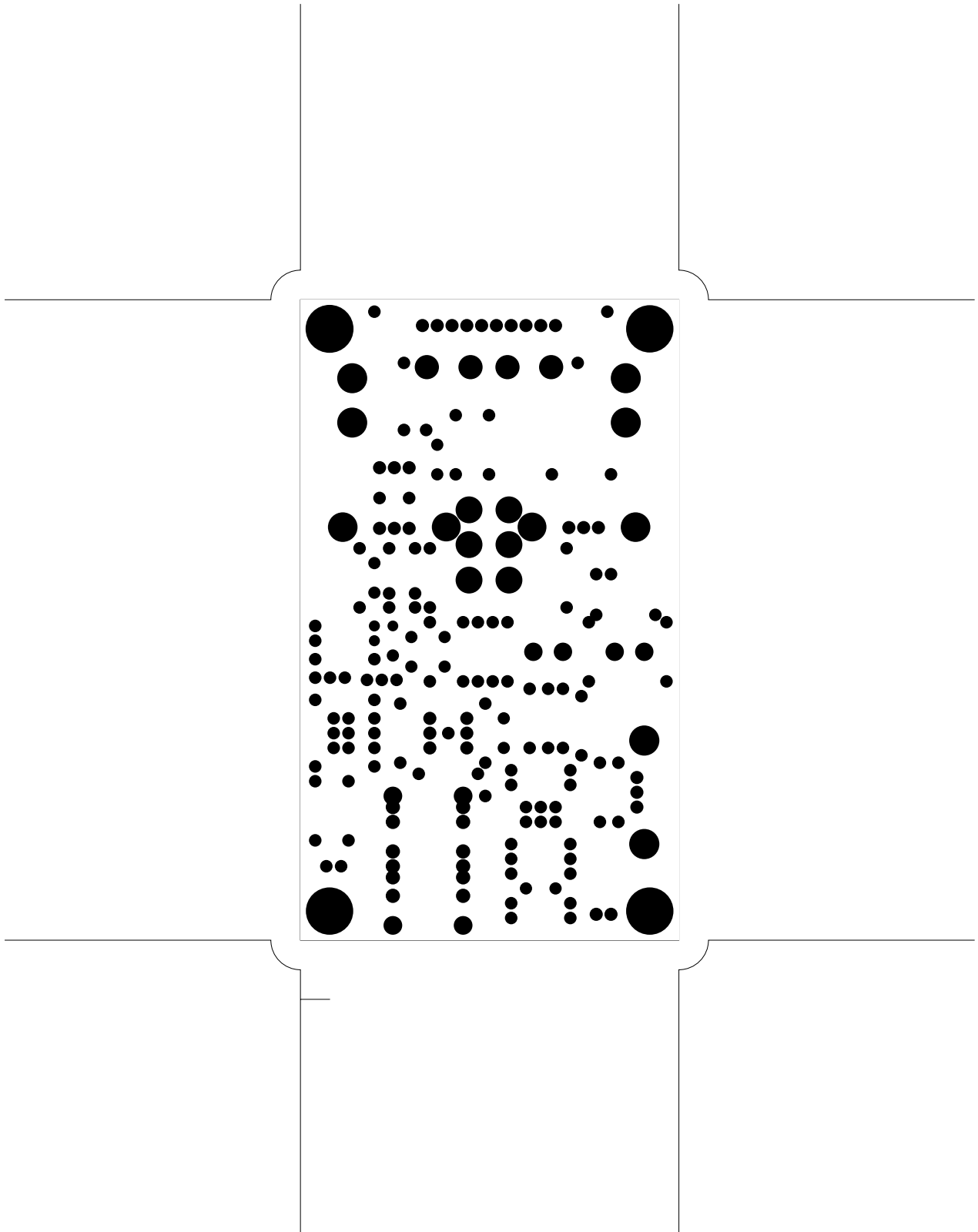
12. fab

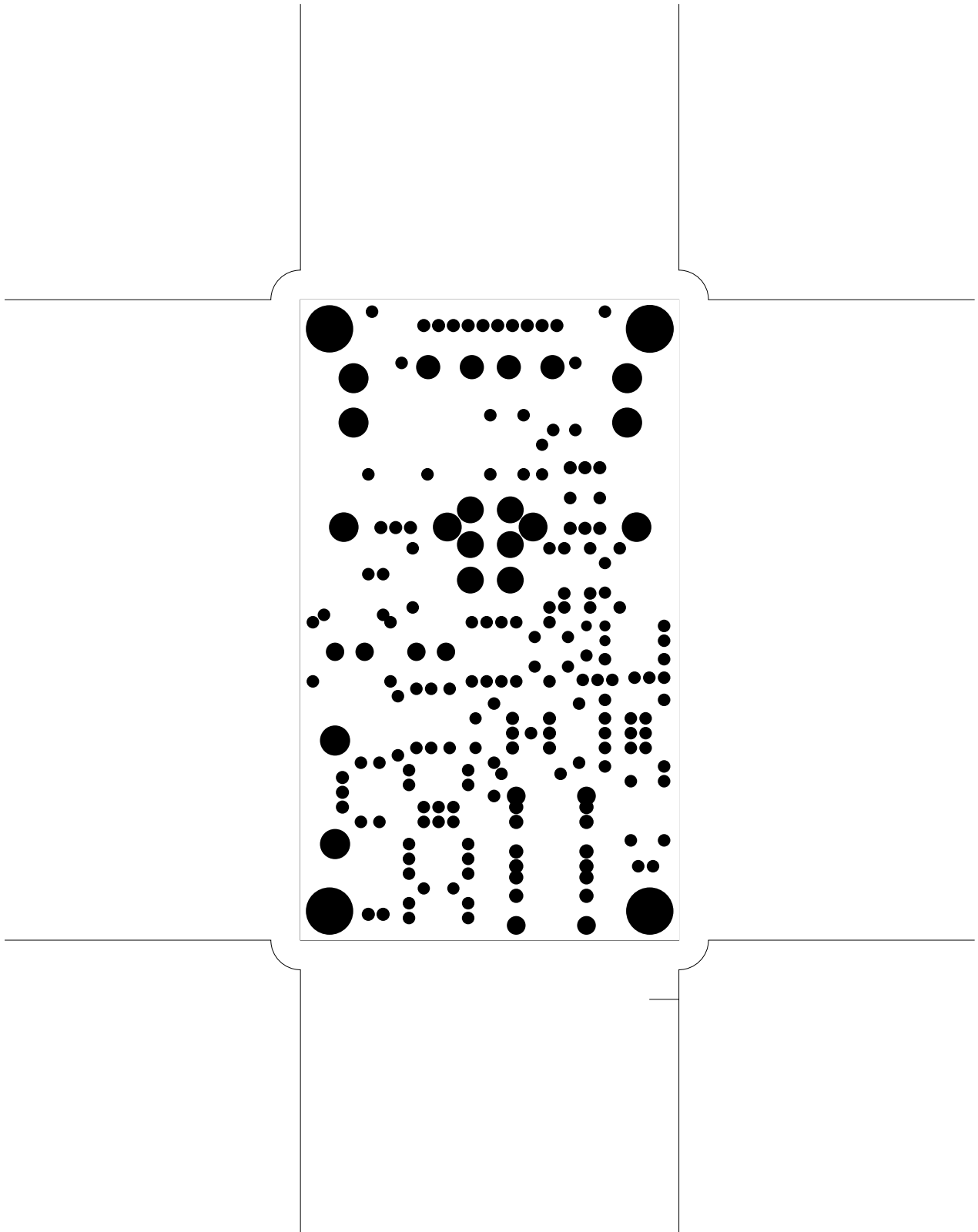


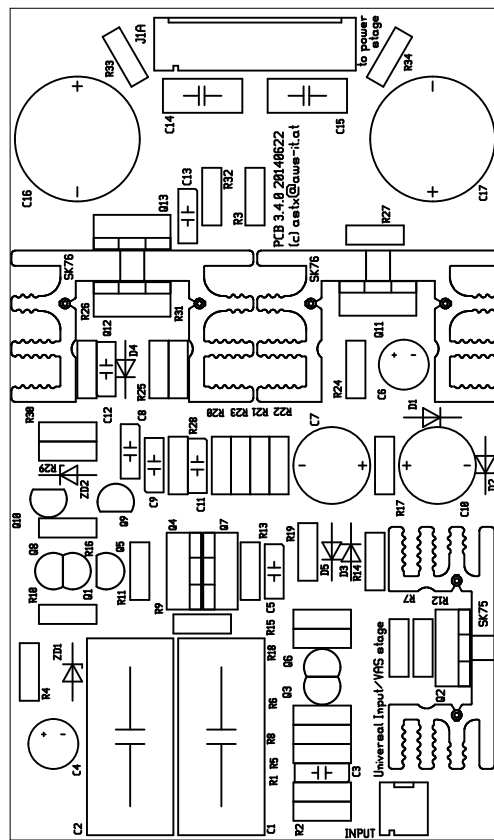




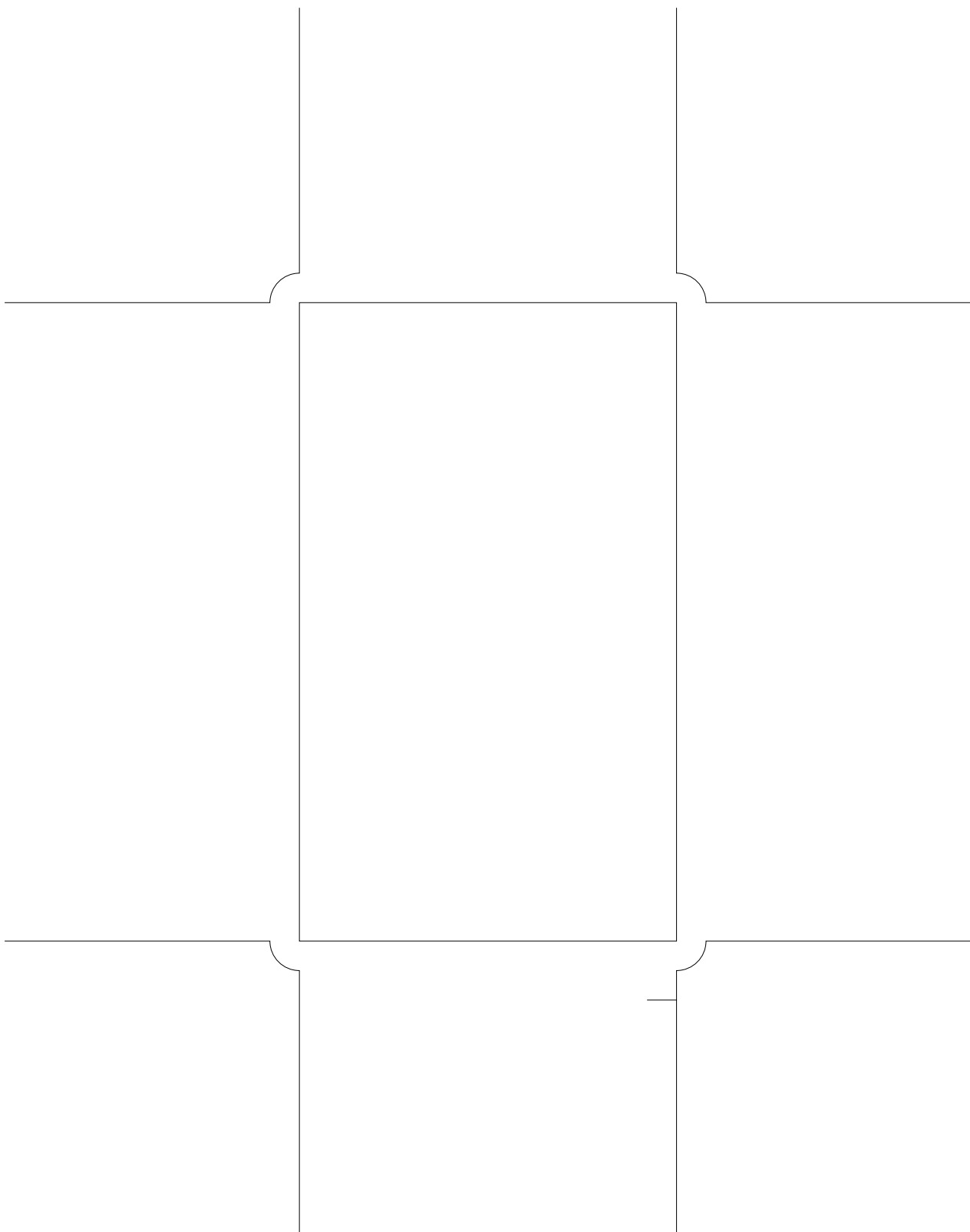




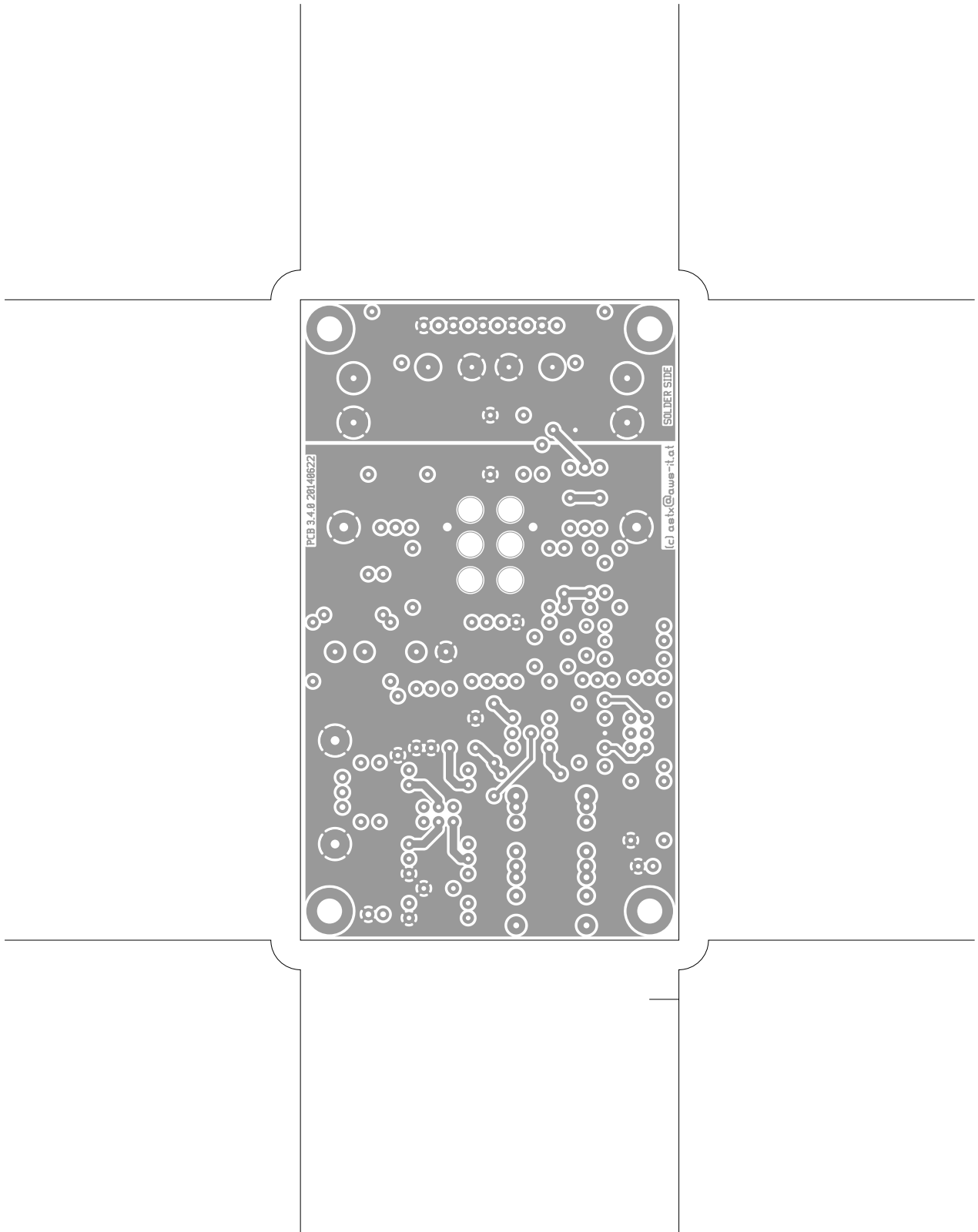






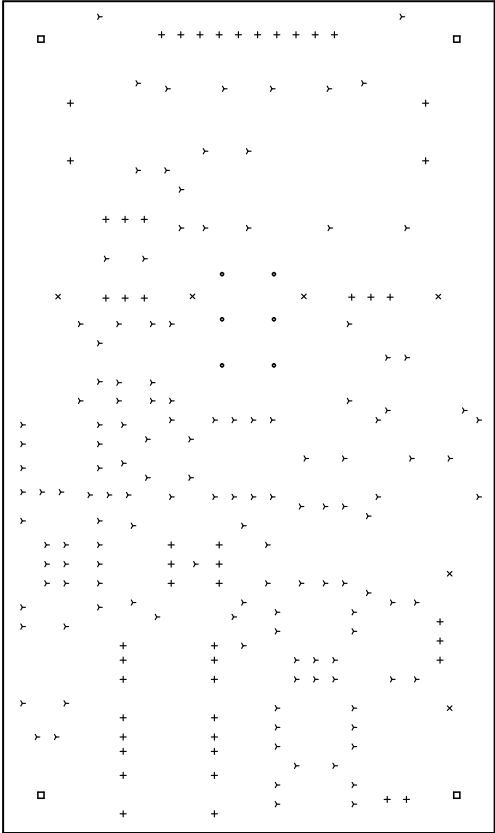






There are 4 different drill sizes used in this layout, 203 holes total

Symbol	Diam. (Inch)	Count	Plated?	
y	0.031	137	YES	
+	0.039	50	YES	Title (unknown) - Fabrication Drawing
x	0.059	6	YES	Author: Ioni
o	0.170	6	NO	Date: Mon Jun 23 11:30:36 2014 UTC
□	0.170	4	YES	Maximum Dimensions: 4330.708661 mls wide, 2559.055118 mls high



Board outline is the centerline of this 8.000000 mil rectangle - 0.0 to 4330.708661, 2559.055118 mls