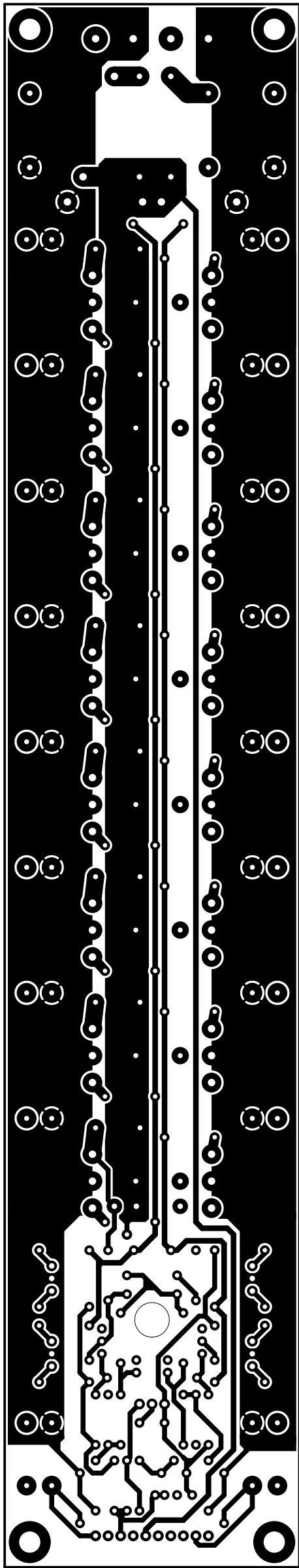
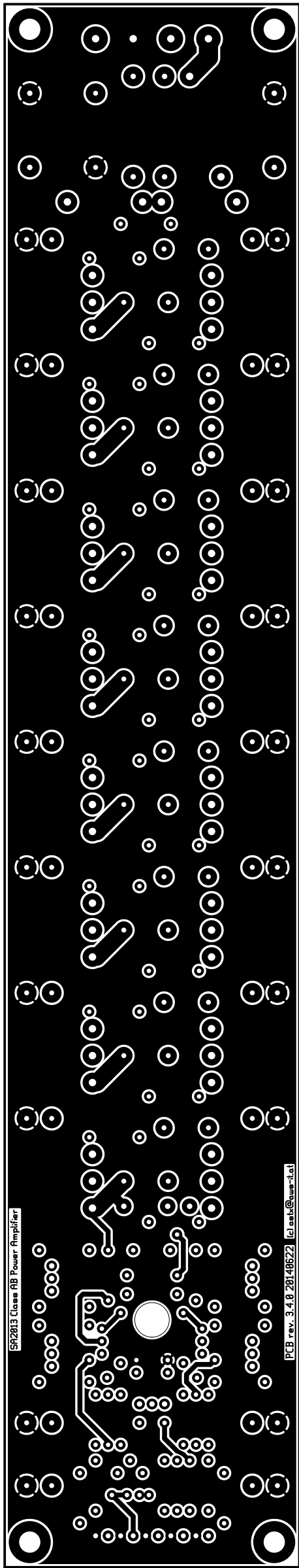
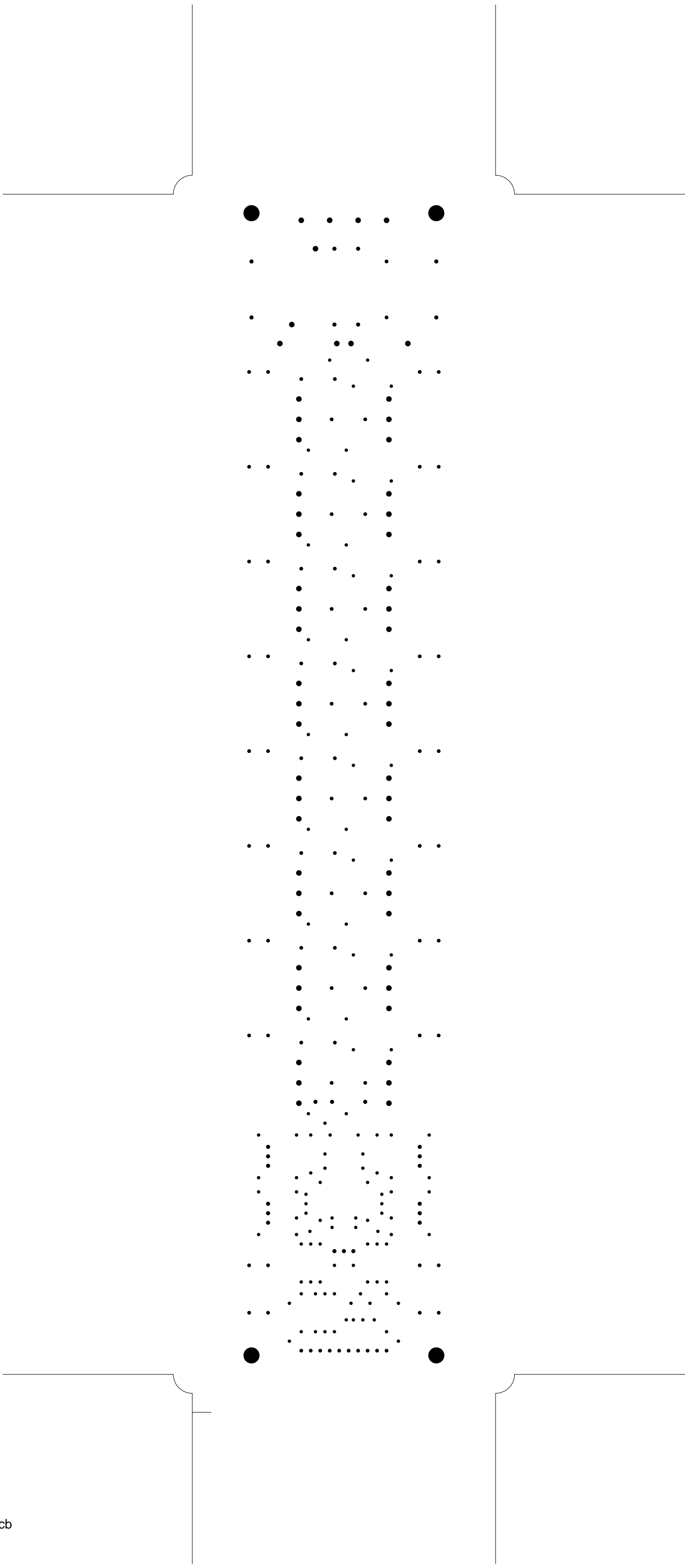


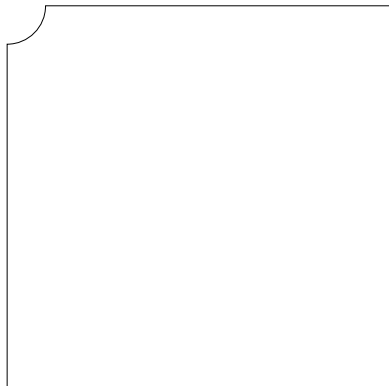
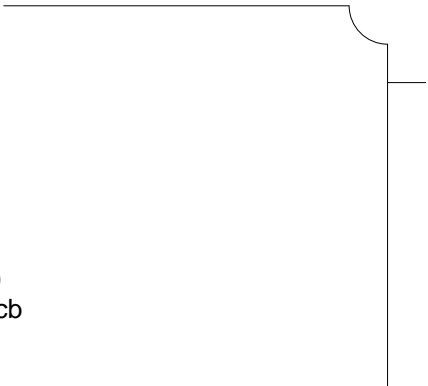
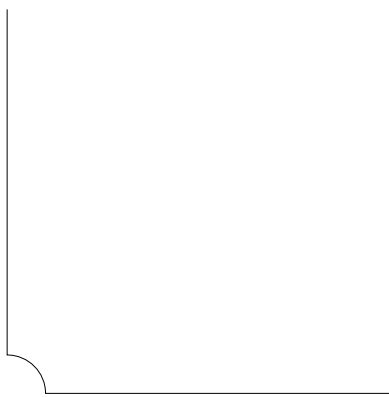
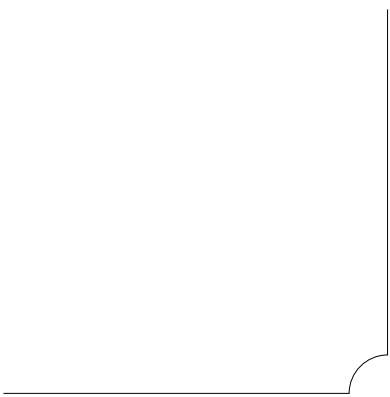
1. Table of Contents (This Page)
Created on Mon Jun 23 13:29:41 2014
2. component
3. solder
4. outline
5. plated-drill
6. unplated-drill
7. componentmask
8. soldermask
9. topsilk
10. bottomsilk
11. topassembly
12. bottomassembly
13. fab

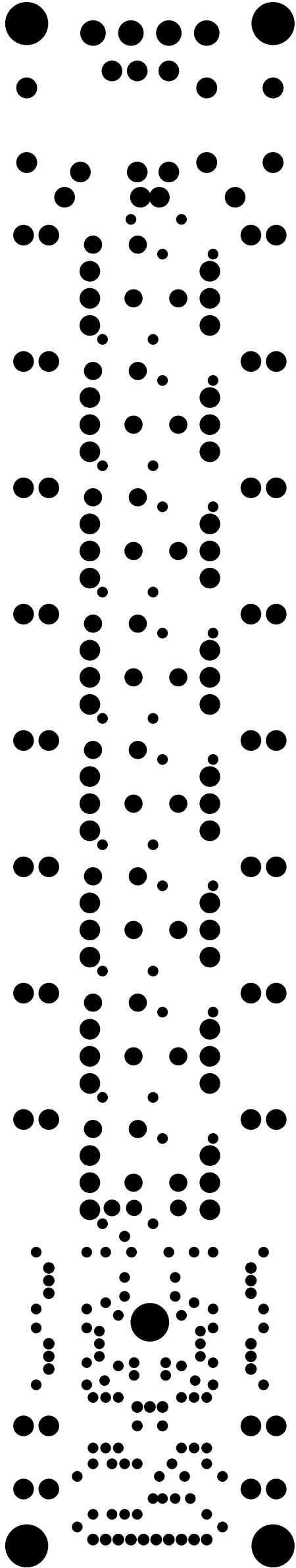


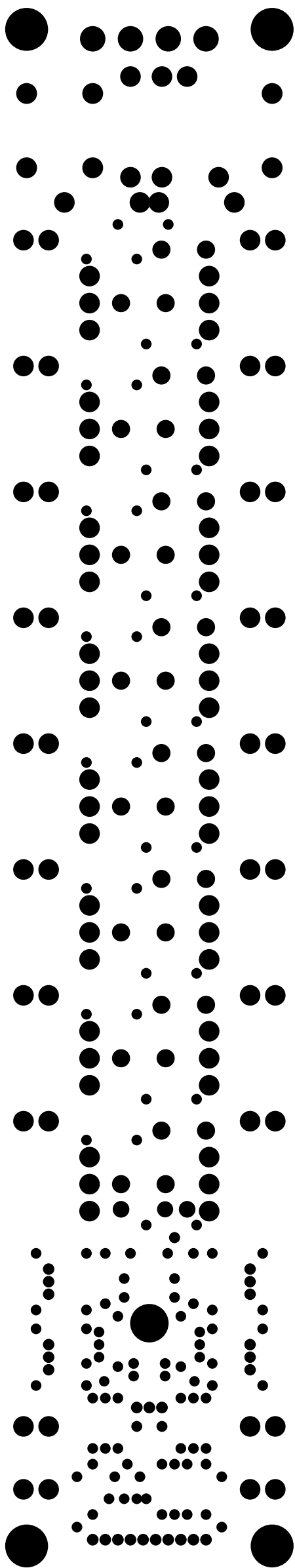


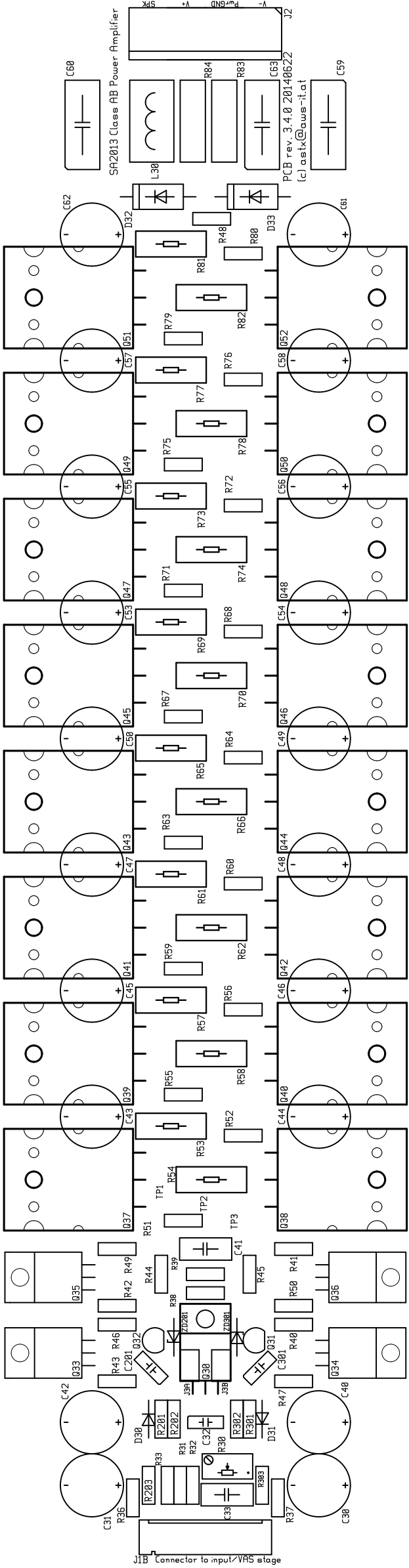
bottom (mirrored), scale = 1:1.000
sa2013_bias_output_stage.pcb

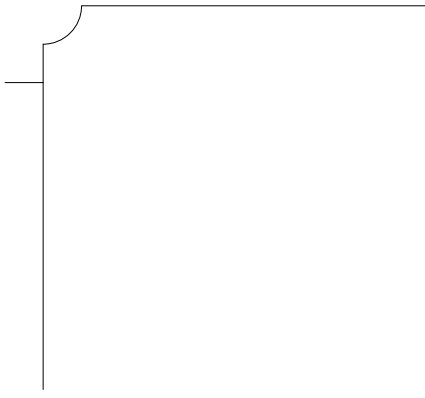
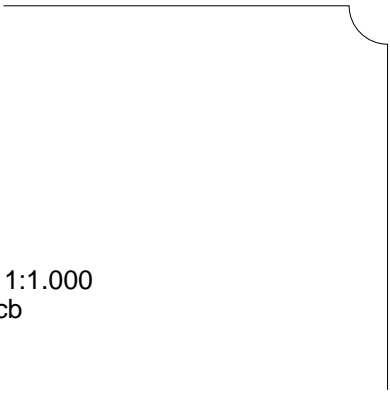
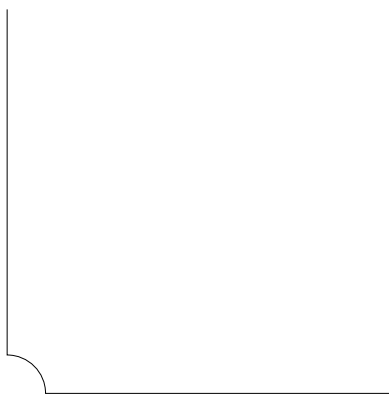
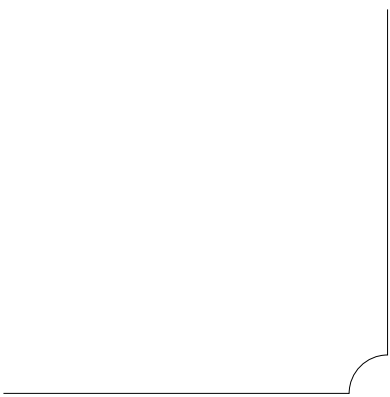


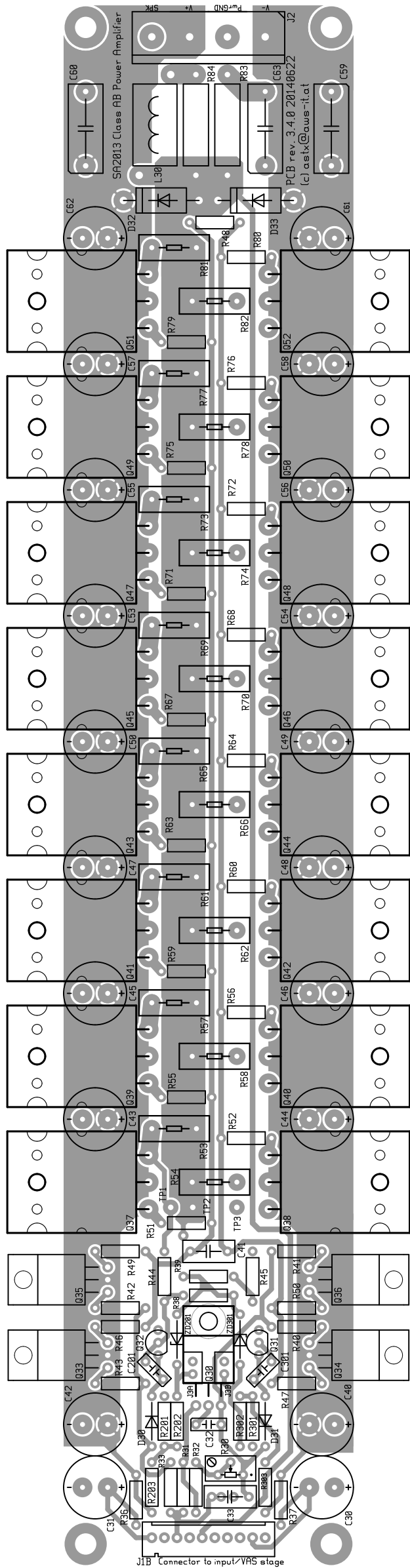


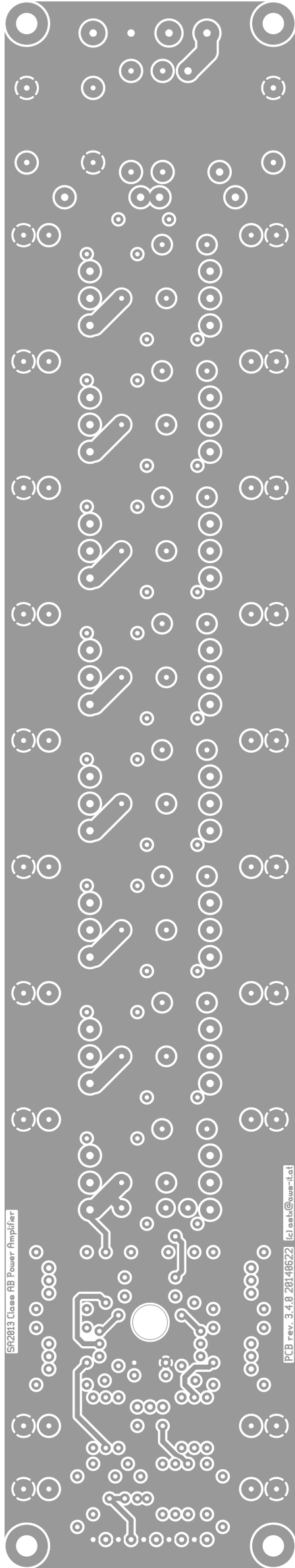












bottomassembly (mirrored), scale = 1:1.000
sa2013_bias_output_stage.pcb

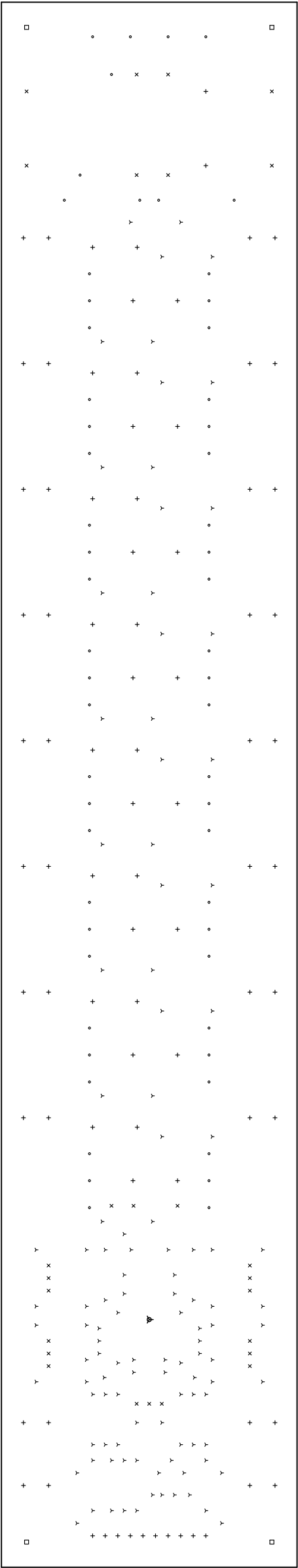
There are 6 different drill sizes used in this layout, 287 holes total

Symbol	Diam. (Inch)	Count	Plated?
Y	0.035	114	YES
+	0.039	84	YES
x	0.043	26	YES
o	0.059	58	YES
□	0.169	4	YES
▼	0.276	1	NO

Title: (unknown) - Fabrication Drawing

Author: toni

Date: Mon Jun 23 11:29:41 2014 UTC



Board outline is the center-line of this path