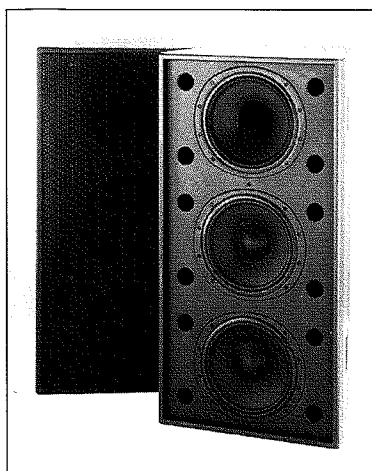


TANNOY**SUPERDUAL
SERIES****S900**

The Tannoy S900 is a versatile full-range loudspeaker system developed for a wide variety of large-scale sound reinforcement applications. The arrayable S900 allows controlled coverage of wide areas in theatre, club and concert sound reinforcement.

This powerful loudspeaker can deliver high sound pressure levels with extremely low distortion giving maximum intelligibility and transparency of sound for applications which require wide bandwidth from single cabinets. This makes the S900 ideal for stage or flown arrays which require extended frequencies down to 40Hz with no additional bass cabinets.

The S900 combines the 12 inch SuperDual with two high power, long throw bass units which employ magnetic liquid cooling. These units maintain excellent linearity, resulting in extremely low levels of distortion. The mid frequency (MF) and high frequency (HF) sources are coincidentally aligned to a point source resulting in a smooth uniform frequency response over a wide area of coverage either as a portable stand alone system or in a multi-cabinet array. The sophisticated CAD designed waveguide combines 90 degree conical dispersion and excellent acoustic impedance characteristics. As the system is a point source, clusters and arrays have minimal lobing. These features are inherent and achieved without the use of any electronic signal processing.



The rugged, multiple-ply hardwood cabinet is fitted with carrying handles, inserts for castors, and optional load certified MAN flying points, which provide a quick and secure flying system.

3-way or 2-way operation can be selected via a switch on the input panel. A Tannoy electronic controller is available, which provides specific crossover and limiter functions. 3-way active operation is recommended for continuous high power applications.

If extended low frequency enhancement and increased system headroom are required a range of Tannoy sub-bass systems are available within the SuperDual range and can be used in conjunction with the S900.

ARCHITECTURAL SPECIFICATION

The loudspeaker system shall be of the two way Dual Concentric type consisting of one 12-inch (300mm) mid frequency transducer and high frequency compression driver coaxially mounted and coincidentally time aligned within the same frame and two 12 inch long throw, fluid cooled bass units front mounted in a 207 litre reflex enclosure. Mid and high frequency elements shall be integrated by an internal 1.8kHz passive crossover network and shall also be capable of integrating actively via a high current switch using 24dB per octave Linkwitz-Riley active filter also at 1.8kHz. The low frequencies shall be integrated with the mid/high frequencies at 100Hz using 24 dB per octave Linkwitz-Riley active filter.

Performance of the loudspeaker, without any external electronic equalisation control shall meet or exceed the following criteria;

Frequency response measured 1 metre on axis with swept sine wave shall be 45Hz - 22kHz +/- 3dB. High frequency dispersion at -6dB shall be 90 degree conical. The power handling when measured to EIA Standard RS-426A shall be LF: 480W, 1920W (peak), MF 350W, 1400W (peak), HF 250W 1000W (peak). Nominal impedance shall be 8 ohm for all transducers. Maximum SPL measured at 1 metre on axis shall be 126dB continuous, 132dB peak.

Speaker enclosure dimensions shall be 1110mm(H) x 560mm(W) x 528mm(D) [43.7ins(H) x 22.05ins(W) x 20.8ins(D)], weight 81Kg (178.2lbs).

The loudspeaker system shall be the Tannoy S900.

APPLICATIONS

Theatre front of house and effects

Concert reinforcement

Movie Theatre/Cinema

Prestige Cabaret and Club reinforcement

Music playback in night-clubs

Side fill in large-scale music reinforcement

Sports and multi-use stadia

High-profile Audio-visual

High-quality public address

Religious facilities

Total experience and leisure venues

Industrial simulators

FEATURES

Compact, versatile enclosure with exceptional sound quality

Point source

Constant directivity

Wide dispersion

Arrayable

High power handling with fluid cooling

High efficiency and low distortion

Rugged birch plywood construction

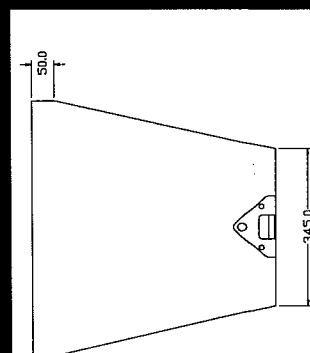
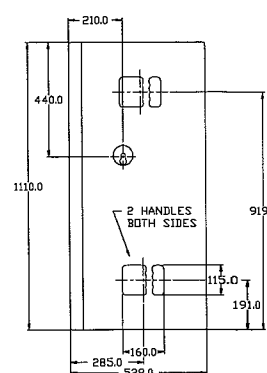
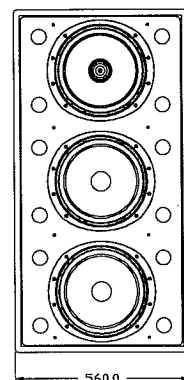
Certified MAN flying option

Switchable active/passive operation

TANNOY

S 900 SPECIFICATIONS

Frequency response (1) +/- 3dB	45Hz - 22kHz				
Low Frequency Limit (1)	-10dB @ 29Hz				
Recommended Amplifier Power	HF (Active)	300 - 600 watt / 8ohm			
	MF (Active)	400 - 800 watt / 8ohm			
	Passive MF/HF	400 - 800 watt / 8ohm			
	LF	400 - 1000 watt / 8ohm			
Power Handling	Average(2)	Programme	Peak (10ms)		
	HF (Active)	250 watt	500 watt	1000 watt	
	MF (Active)	350 watt	700 watt	1400 watt	
	Passive MF/HF	300 watt	600 watt	1200 watt	
Sensitivity (1) 2.83 volt @ 1m	LF	480 watt	960 watt	1920 watt	
	HF (Active)	102dB	MF(Active)	98dB	LF 96dB
	MF(Active)	98dB	MF/HF(Passive)	98dB	
	LF				
Maximum SPL (3) @ 1m	Average	Peak			
	Active MF/HF	126dB	132dB		
	Passive MF/HF	124db	130dB		
	LF	123db	129dB		
Impedance	Nominal	HF (Active)	MF(Active)	Passive (MF/HF)	LF
	Minimum	8 ohm	8 ohm	8 ohm	8 ohm
Dispersion (-6dB)		5.6 ohm	7.1 ohm	7.1 ohm	6.5 ohm
Driver Complement	1 x 12"(300mm) Superdual Constant Directivity Dual Concentric Type number 3138 2 x 12" Long Throw Bass Units. Type Number 3112				
Crossover point	3-Way Active (With Tannoy Electronic Crossover, 4th order Linkwitz-Riley) 100 Hz & 1.8kHz 2-Way Active (With Tannoy Electronic Crossover, 4th order Linkwitz-Riley) 100 Hz & Passive 1.8kHz				
Enclosure	207.3 litre(7.318cu.ft.) vented, 18mm multi-ply birch plywood				
Finish	Textured black/green paint				
Protective Grille	Perforated steel, black with 50% free air flow				
Connectors	MF/HF - 2 x Speakon NL4MP-Active/Passive IN/OUT (switchable) LF - 2 x Speakon NL4MPR IN/OUT				
Rigging/Fittings	4 x Recessed carrying handle 2 x MAN blanking plates 2 x Rear Kelping Brackets Blanking Plates Inserts for castors				
Dimensions	1110mm(H) x 560mm(W) x 528mm(D) 43.7ins(H) x 22.05ins(W) x 20.8ins(D)				
Weight	81 Kg (178.2 lbs)				



NOTES:

- (1) Average over stated bandwidth. Measured at 1m on axis in an anechoic chamber.
 (2) Long term power handling capacity as defined in EIA standard RS - 426A (3) Unweighted pink noise input, measured at 1m.

TANNOY operate a policy of CONTINUAL research and development. THE INTRODUCTION OF NEW MATERIALS OR MANUFACTURING METHODS WILL ALWAYS EQUAL OR EXCEED THE PUBLISHED SPECIFICATIONS WHICH TANNOY RESERVE THE RIGHT TO ALTER WITHOUT PRIOR NOTICE.
 PLEASE VERIFY THE LATEST SPECIFICATIONS WHEN DEALING WITH CRITICAL APPLICATIONS.

TANNOY LTD.

ROSEHALL INDUSTRIAL ESTATE, COATBRIDGE, STRATHCLYDE ML5 4TF, SCOTLAND.....TEL: +44 (0) 1236 420199 FAX: +44 (0) 1236 428230

TGI NORTH AMERICA

300 GAGE AVENUE, UNIT ONE, KITCHENER, ONTARIO N2M 2C8, CANADA.....TEL: (519) 745 1158 FAX: (519) 745 2364

TANNOY NEDERLAND

EZELSVELDLAAN NO. 52, 2611 RV, DELFT, NETHERLANDS.....TEL: (015) 124034 FAX: (015) 125213

TANNOY



HEAR
BELIEVE

A Member of the TGI plc Group of Companies