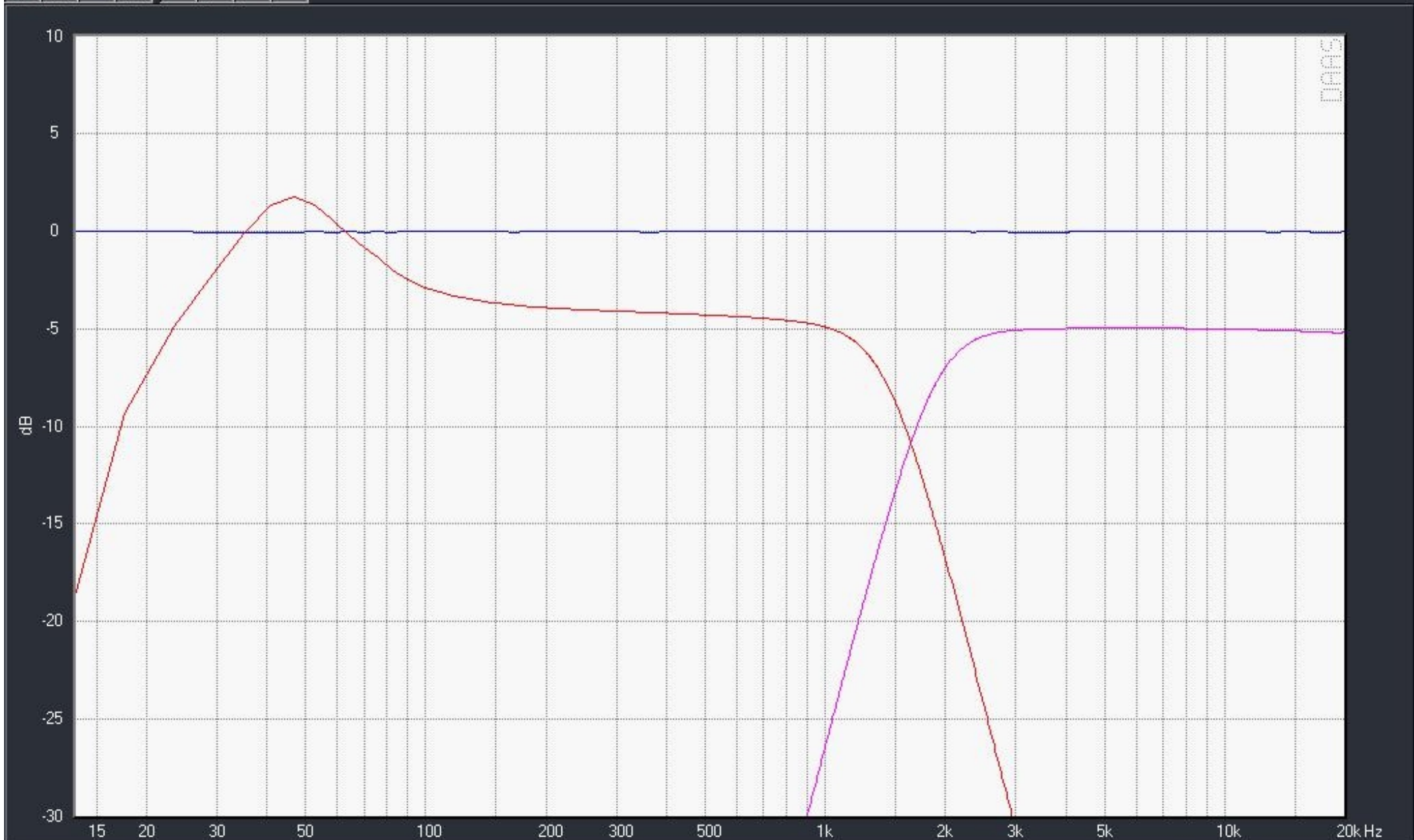


**ADAM Audio**

**Active Studio Monitor**

**S2.5-A**



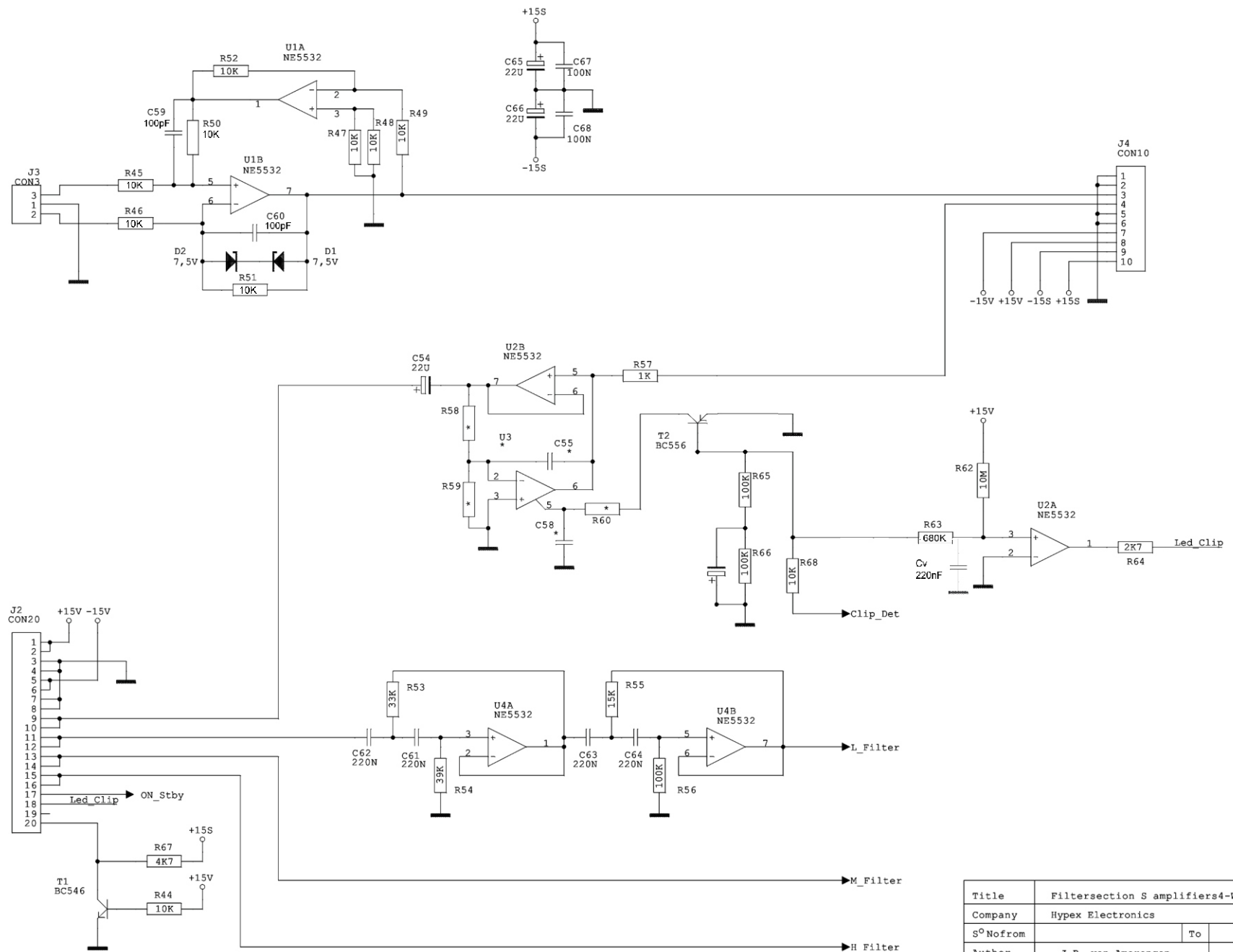
Delay compensation acoustic: automatic

Test Signal: PN8192

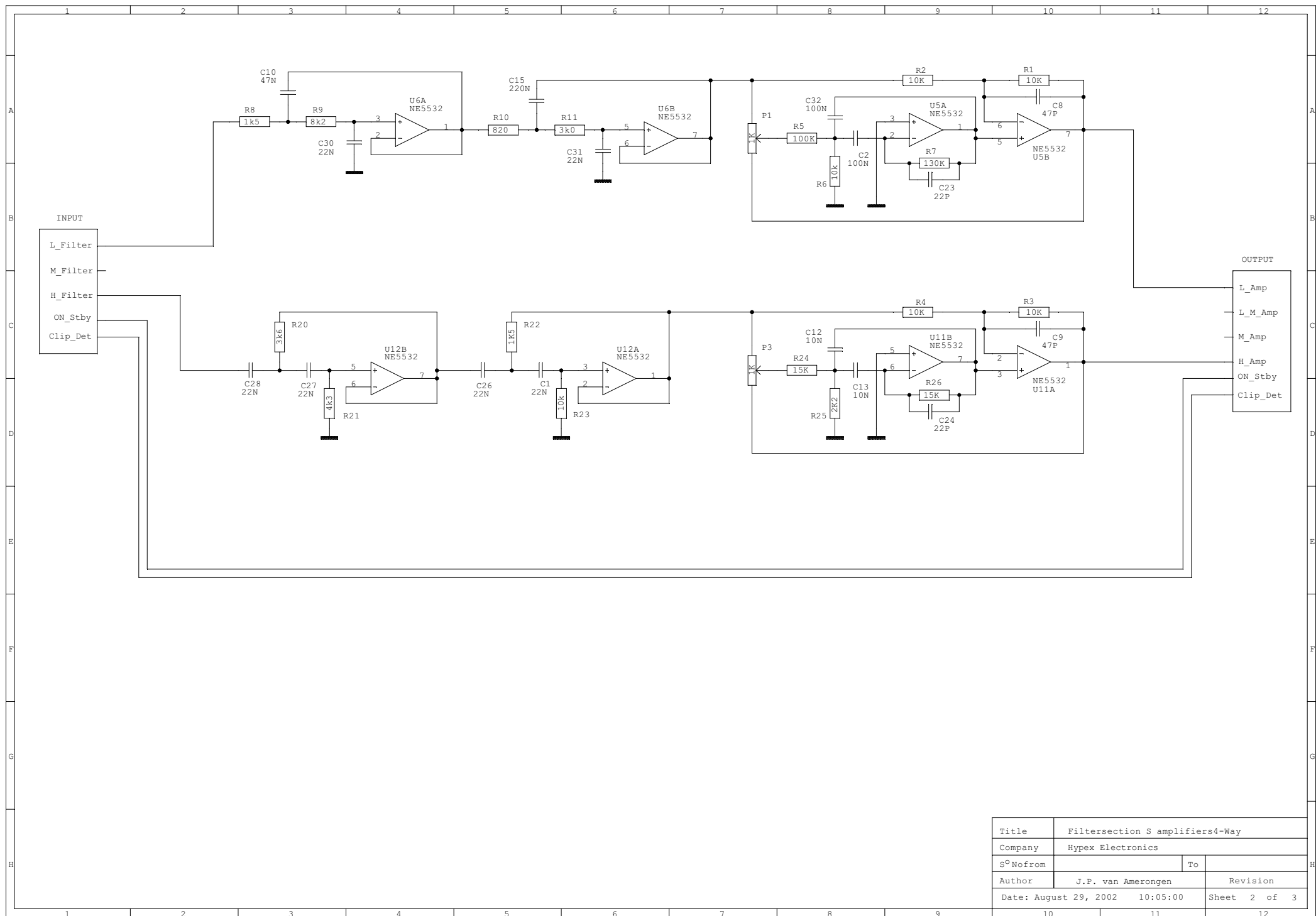
In1: ±2.0V In2: ±11.3Pa Out: 25 dB kHz 48 DUT:

NoName SN:

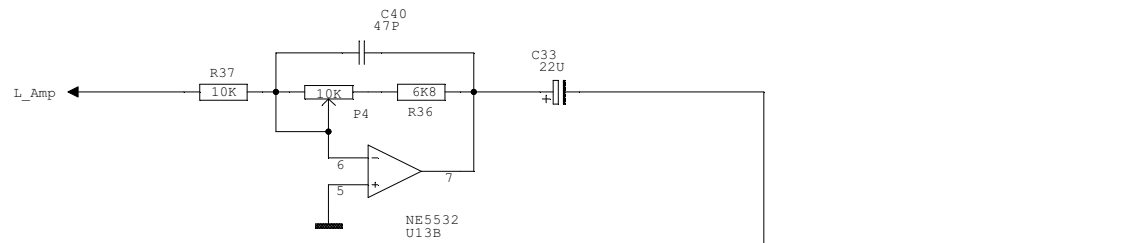
0000 27.06.2005 08:23:33



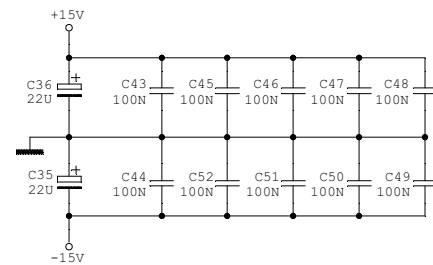
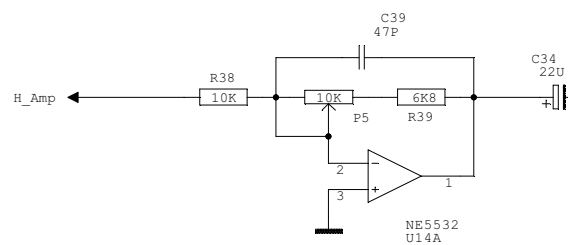
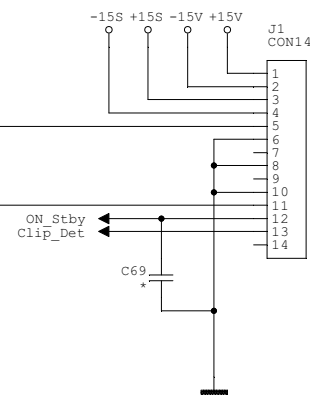
Title	Filtersection S amplifiers4-Way		
Company	Hypex Electronics		
S <sup>o</sup> Nofrom		To	
Author	J.P. van Amerongen	Revision	
Date: August 12, 2002	13:54:00	Sheet 1	of 3



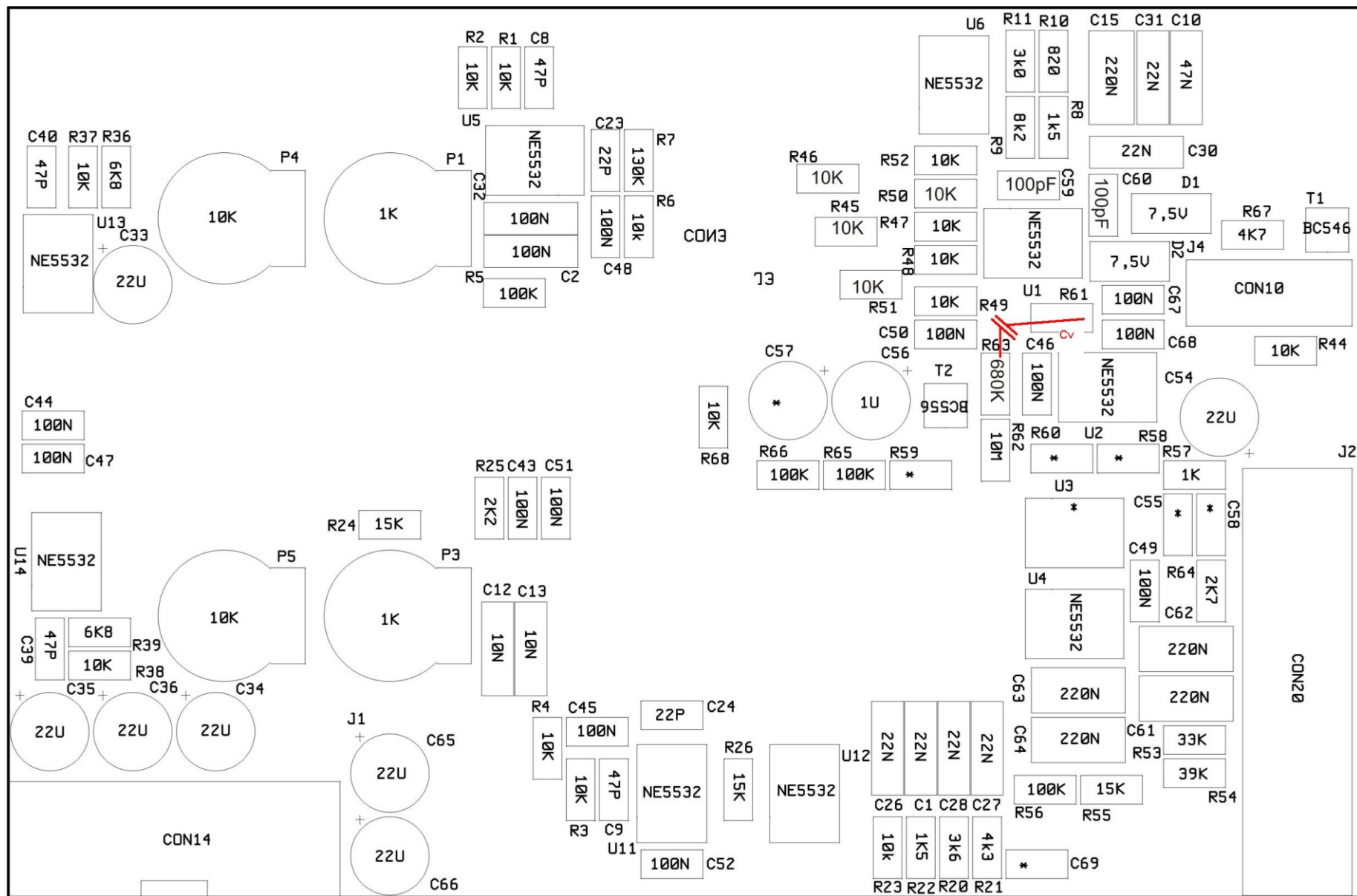
Title	Filtersection S amplifiers4-Way		
Company	Hypex Electronics		
S <sup>o</sup> Nofrom		To	
Author	J.P. van Amerongen		Revision
Date: August 29, 2002	10:05:00	Sheet	2 of 3



Connector to Amplifier

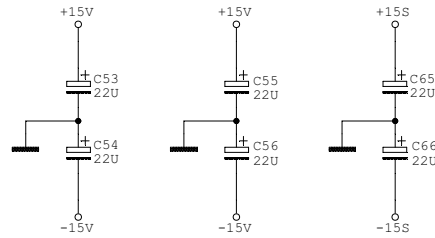
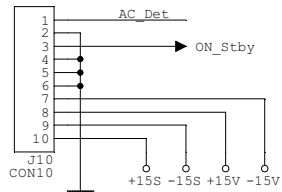


Title	Filtersection S amplifiers4-Way		
Company	Hypex Electronics		
S <sup>o</sup> Nofrom		To	
Author	J.P. van Amerongen		Revision
Date: August 29, 2002	10:04:00	Sheet 3 of 3	



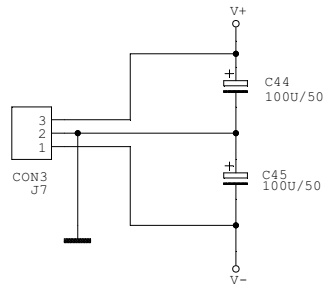


Connector to Powersupply

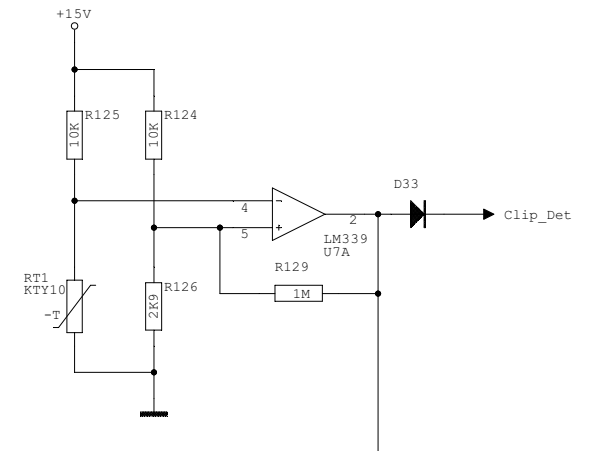
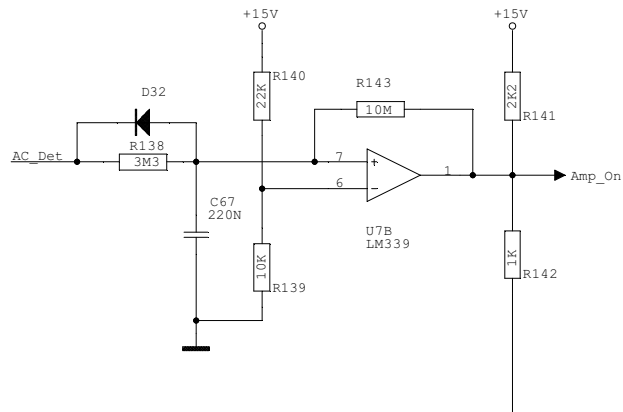
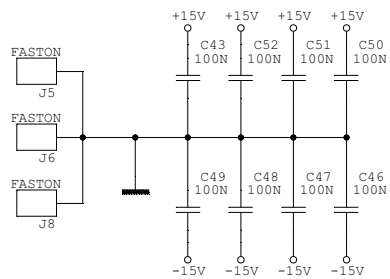


Current consumption  
NE5532 6mA Fairchild  
TLE2037 5,3mA  
LM339 0,2mA  
LM3080 1,1mA  
Powerrelais 33mA  
Relais 17mA

Connector to Powersupply

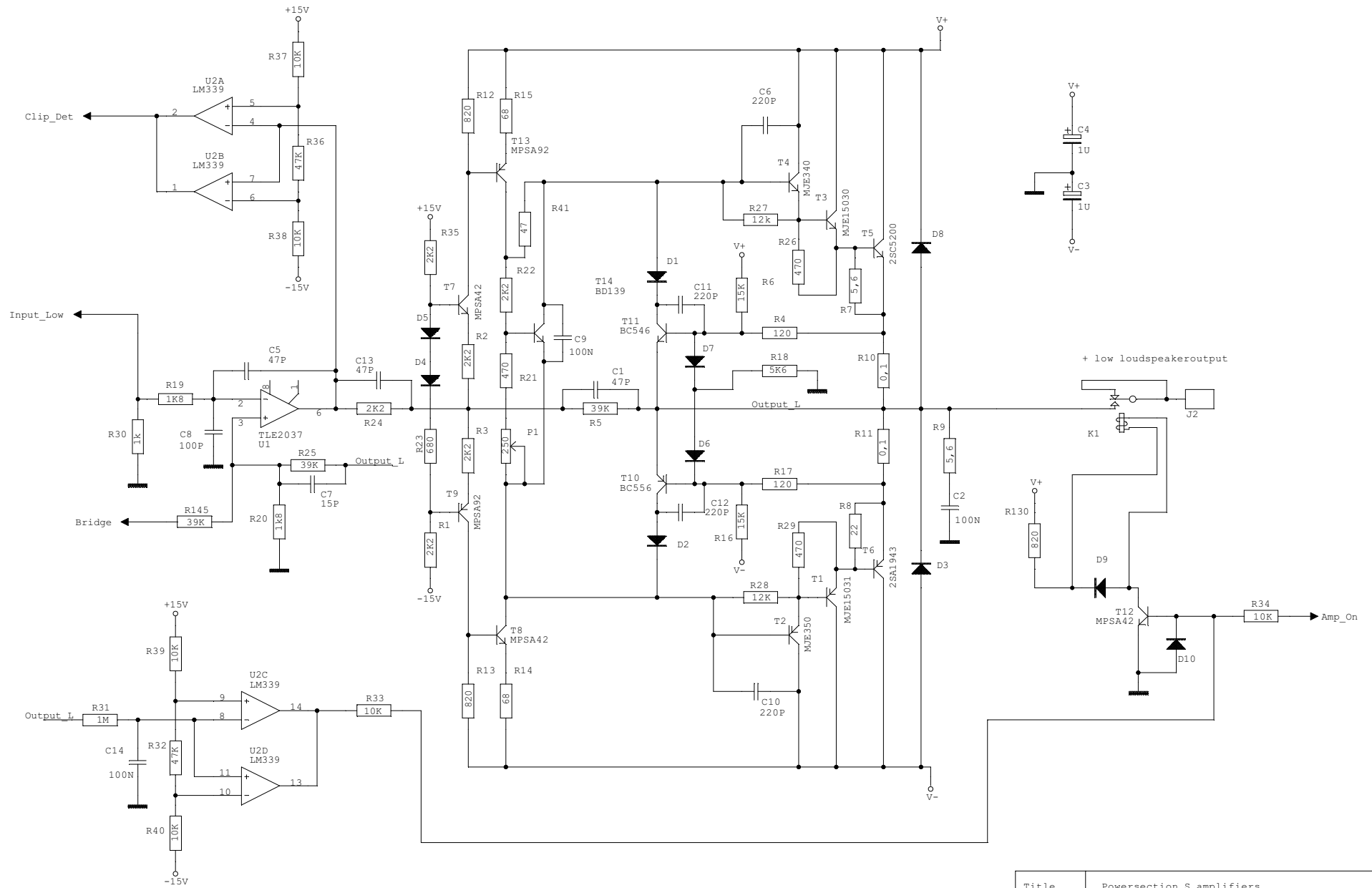


Negative loudspeakeroutput



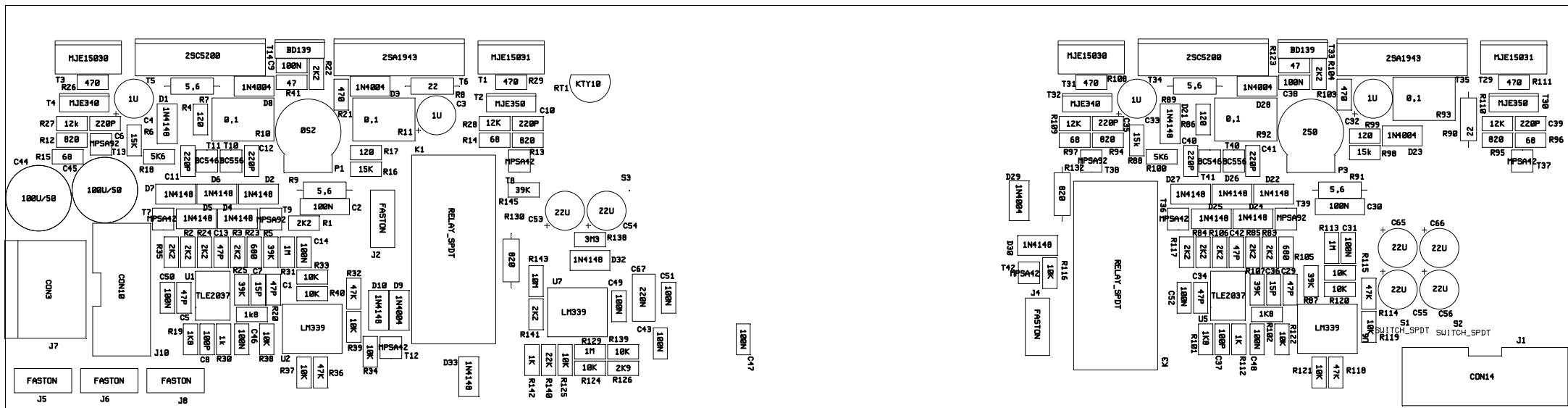
Title	Powersection S amplifiers		
Company	Hypex Electronics		
S <sup>o</sup> Nofrom	To	Revision	
Author	J.P. van Amerongen		Revision
Date: August 08, 2002	13:10:00	Sheet 2 of 5	

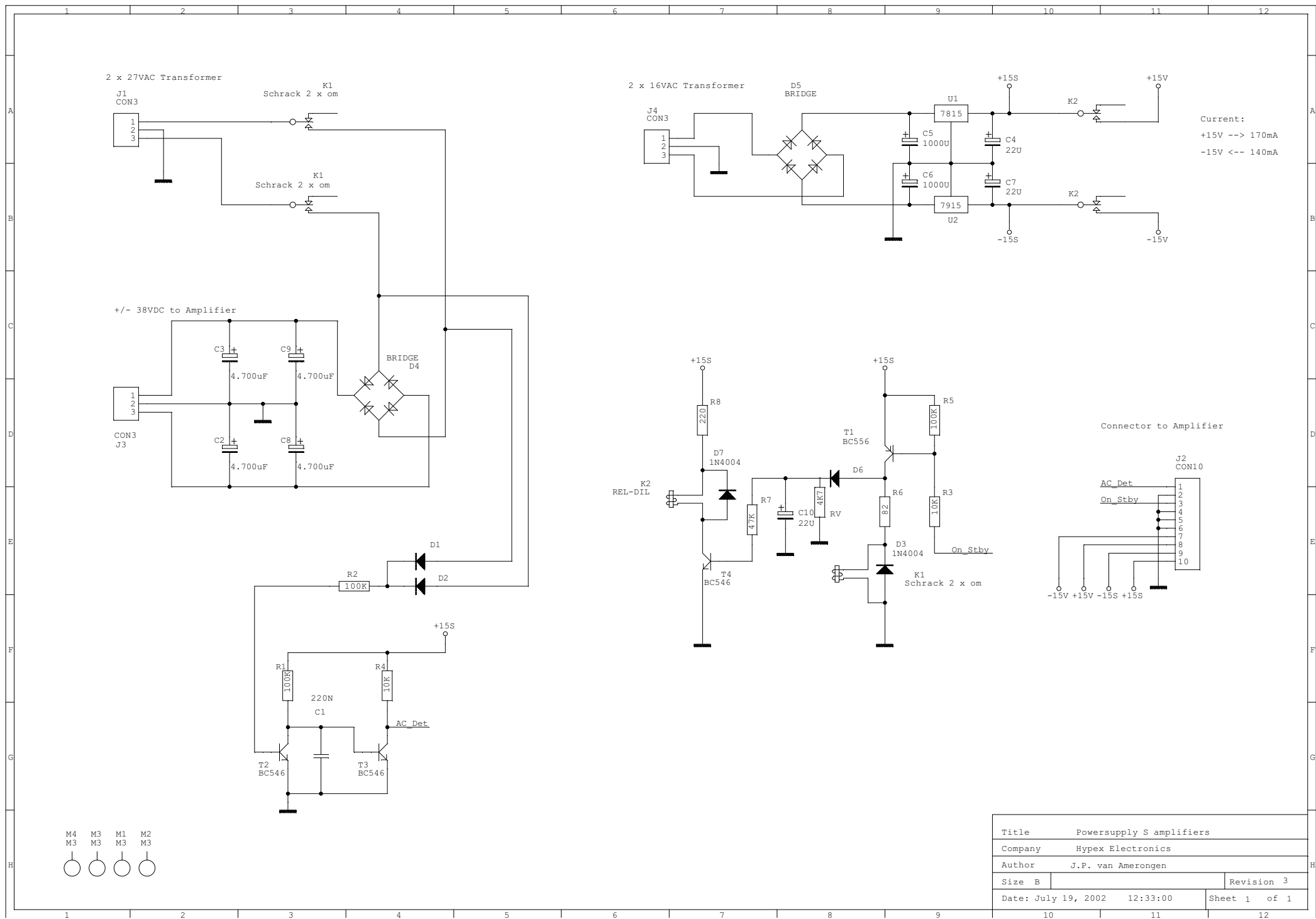




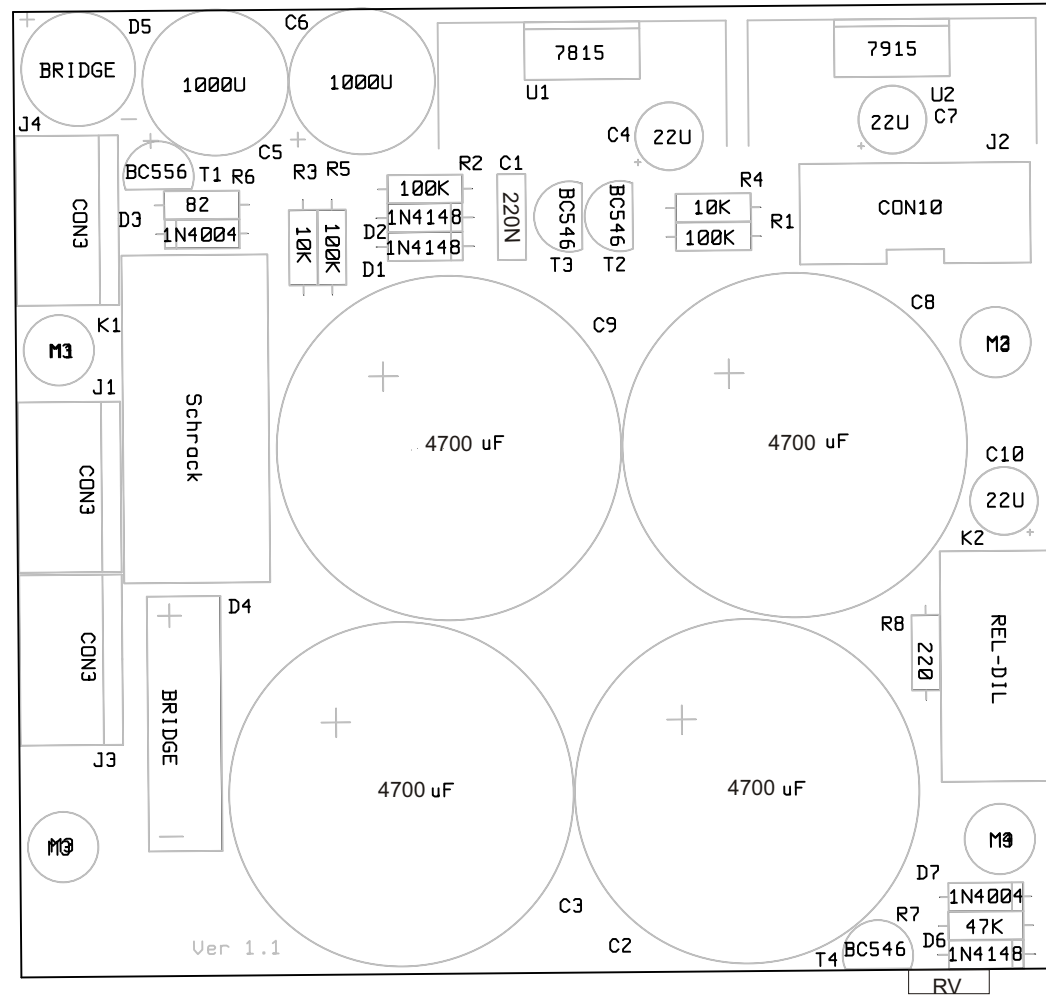
Title	Powersection S amplifiers		
Company	Hypex Electronics		
S°Nofrom		To	
Author	J.P. van Amerongen	Revision	
Date: July 19, 2002	08:17:00	Sheet 3 of 5	







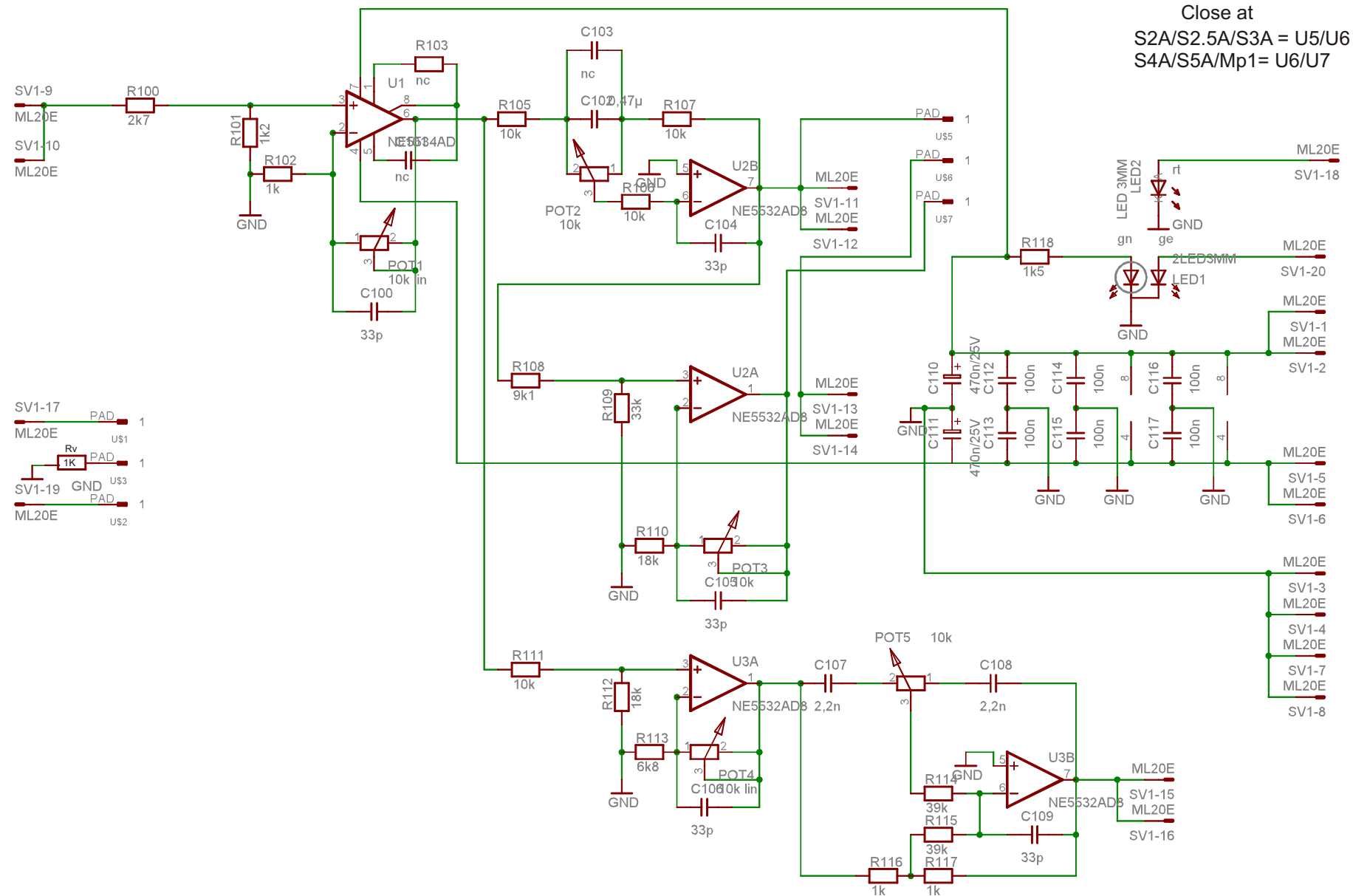
Title		Powersupply S amplifiers	
Company		Hypex Electronics	
Author		J.P. van Amerongen	
Size	B	Revision	3
Date: July 19, 2002		12:33:00	
Sheet		1 of 1	



ADAMAudio

ActiveStudioMonitor

# Front Panel

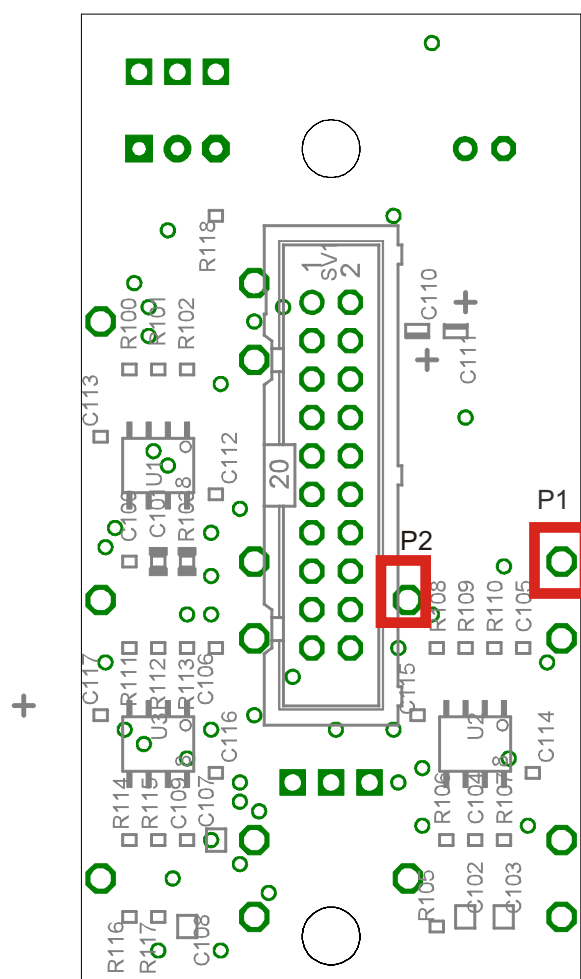


Close at  
 $S2A/S2.5A/S3A = U5/U6$   
 $S4A/S5A/Mp1 = U6/U7$

Close at

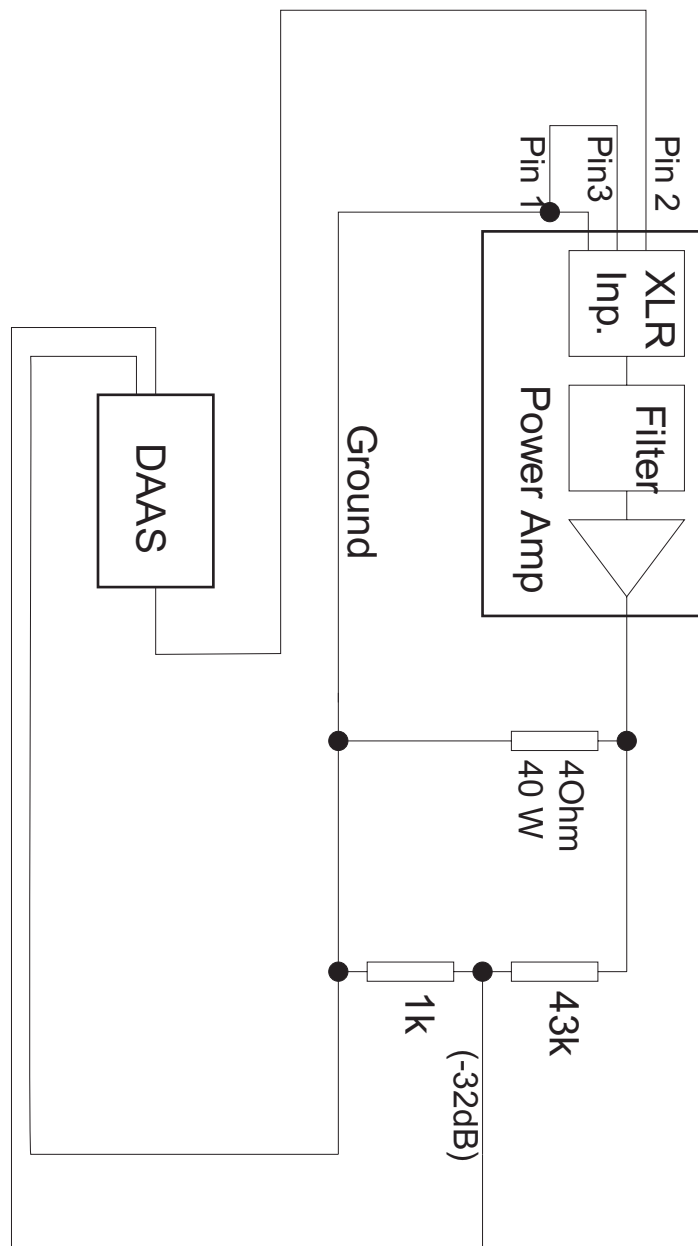
$$S2A/S2.5A/S3A = U5/U6$$

S4A/S5A/Mp1= U6/U7



Close P1-P2 at  
S2A/S2.5A/S3A





# AmplifierMeasurement.