

ROTEL *hifi*

PHONO EQUALIZER

RQ-970BX

TECHNICAL MANUAL

TABLE OF CONTENTS

Chassis Layout.....	1
Wiring Diagram.....	2
Schematic Diagram.....	3
Printed Circuit Board.....	4
PC Board Ass'y Parts List.....	5

THE ROTEL CO., LTD.

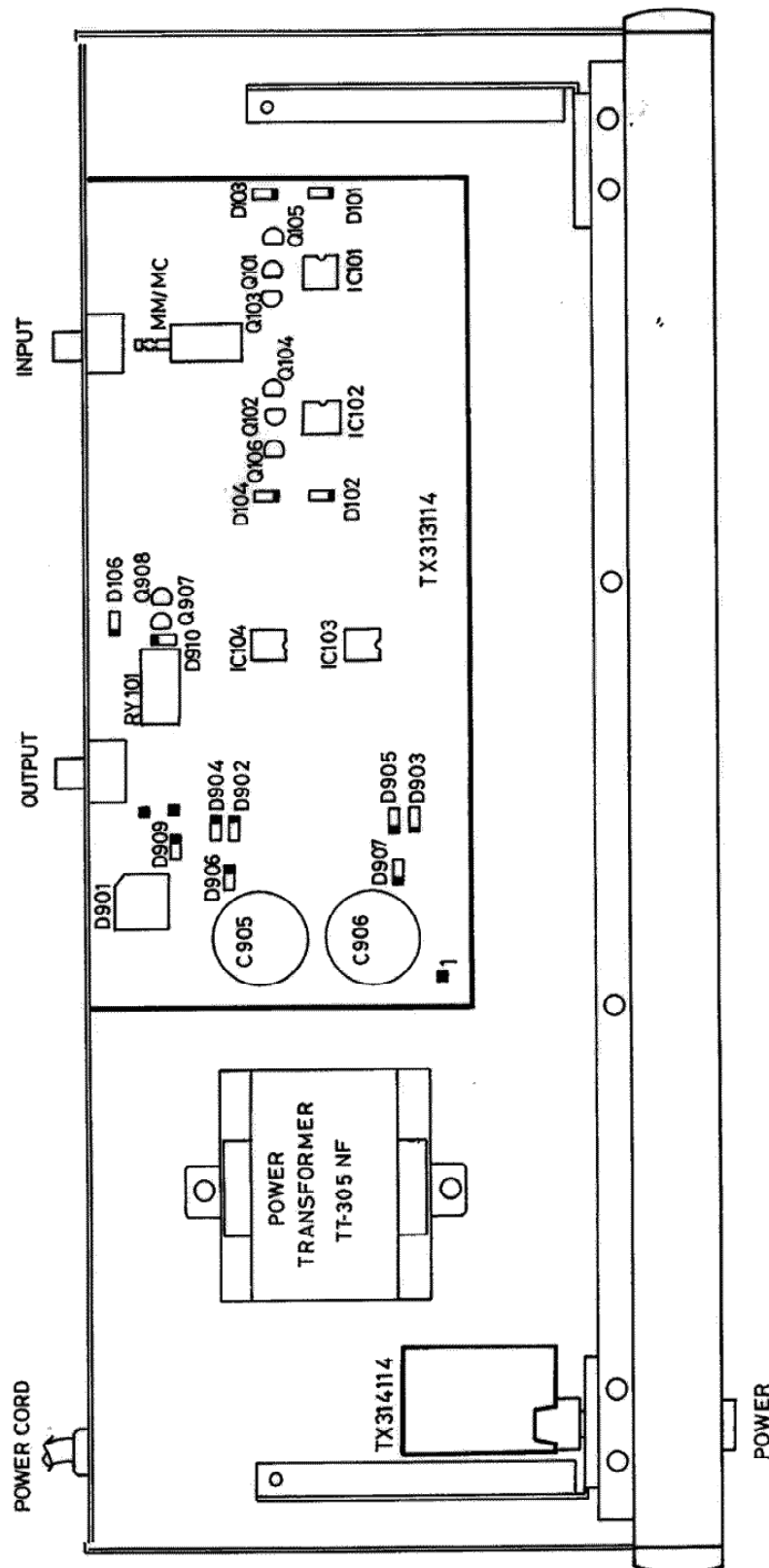
1-36-8, OHOKAYAMA, MEGURO-KU, TOKYO 152, JAPAN

ROTEL ELECTRONICS CO., LTD.

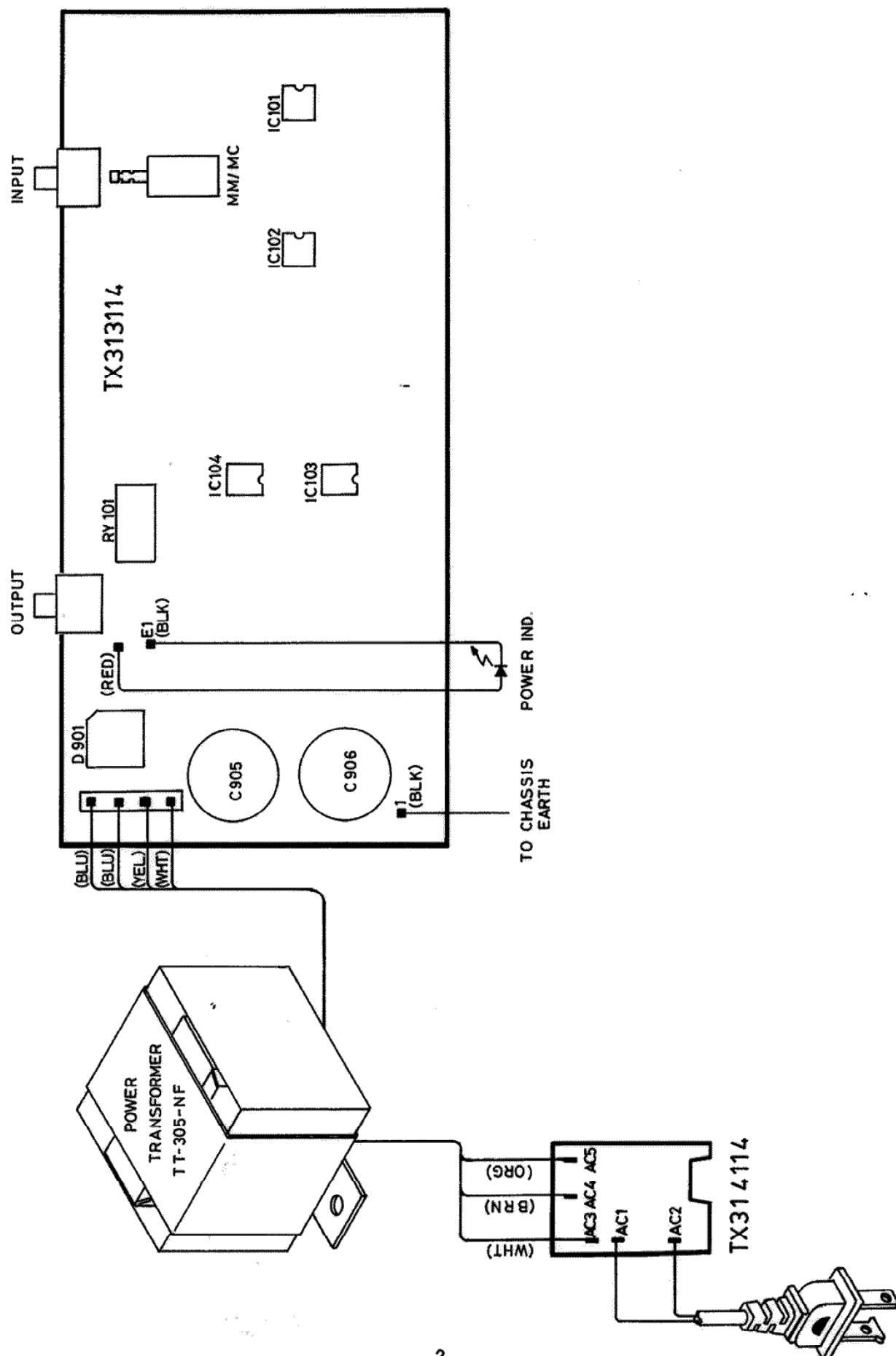
3F-2, NO.35, FU HSING NORTH ROAD, TAIPEI, TAIWAN, REPUBLIC OF CHINA

MN20002164

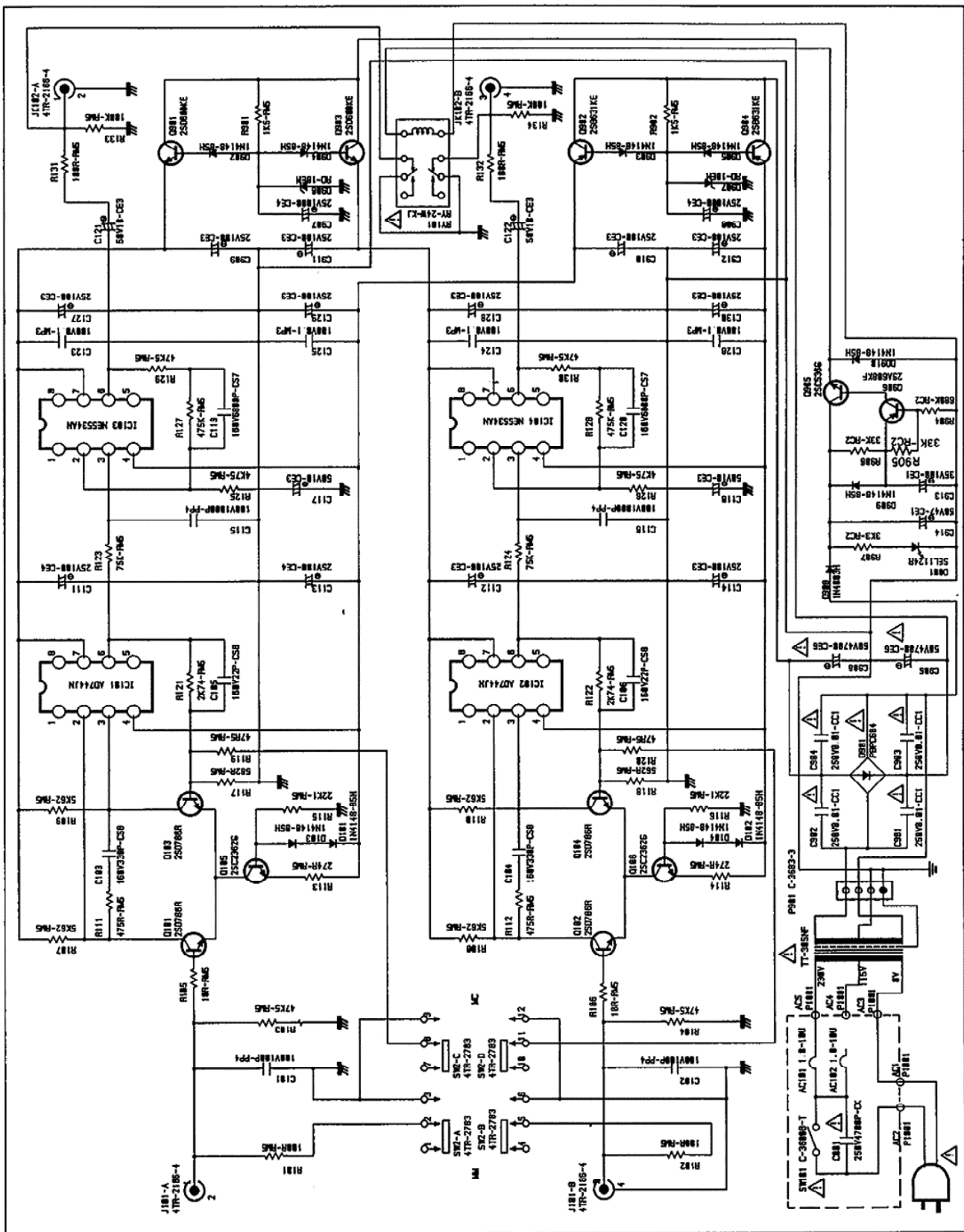
Chassis Layout



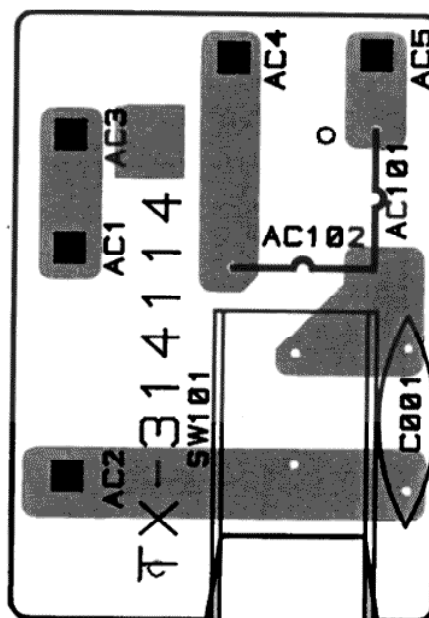
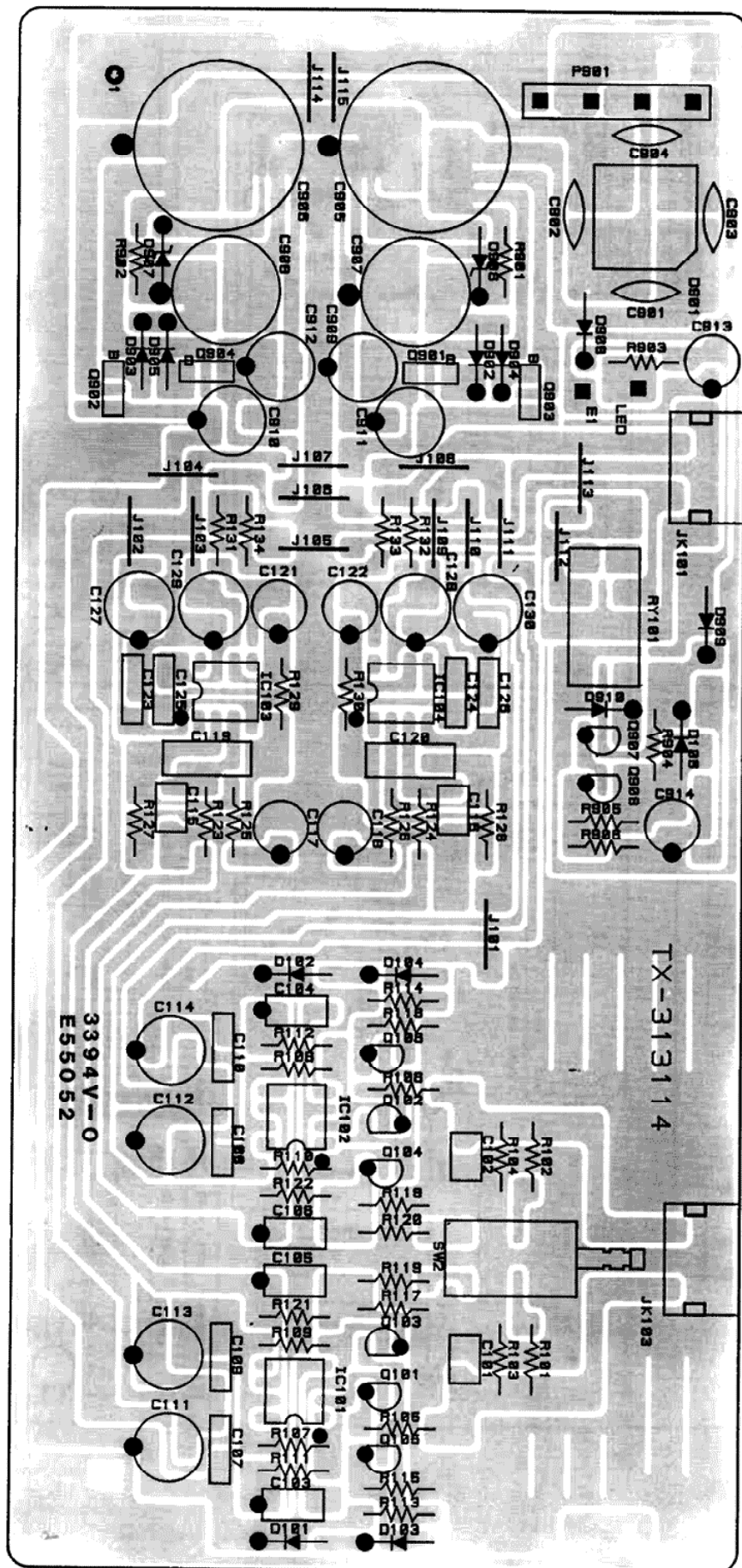
Wiring Diagram



Schematic Diagram



Printed Circuit Boards



Parts List

NOTE: THE COMPONENTS INDENTIFIED BY Δ MARK ARE FOR SAFETY. REPLACE ONLY WITH ORIGINAL PARTS. DO NOT SUBSTITUTE.

SYMBOL	PARTS NO.	DESCRIPTION	SYMBOL	PARTS NO.	DESCRIPTION
TX313114 PCB ASSEMBLY			SC00000027	AC CORD STOPPER SR-4N-4 Δ	
R101, 102	RM81000619	R, METAL MK2100RFECZ.	CD00000218	AC CORD SPT-2 AWG#18 4TR-670#4 (U,C,A,J) Δ	
R103, 104	RM84752616	R, METAL MK247K5FECZ.	CD00000322	AC POWER CORD 4TR-2757(D) Δ	
R105, 106	RM81009611	R, METAL MK2010RFECZ.	CD00000048	AC POWER CORD 4TR-1037 (H,E,Y,S1) Δ	
R107-110	RM85621610	R, METAL MK25K62FECZ.	CD00000085	AC POWER CORD C-2504A(K1) Δ	
R111, 112	RM84750619	R, METAL MK2475RFECZ.	CD00000115	AC POWER CORD C-3763-T (G1) Δ	
R113, 114	RM82740611	R, METAL MK2274RFECZ.	NP00001949	NAME STICKER ROTEL-120V TNP-382	
R115, 116	RM82212618	R, METAL MK222K1FECZ.	NP00001962	NAME STICKER ROTEL-240V TNP-384	
R117, 118	RM85620616	R, METAL MK2562RFECZ.	NP00001998	NAME STICKER ROTEL-230V TNP-389	
R119, 120	RM84759611	R, METAL MK247R5FECZ.	NP00002012	NAME STICKER ROTEL-100V TNP-391	
R121, 122	RM82741615	R, METAL MK22K74FECZ.	NP00001950	NAME STICKER ROTEL-220V TNP-383	
R123, 124	RM87502611	R, METAL MK2075KFECZ.	AA70000113	FRONT PANEL 2TPD-1 TFP-713	
R125, 126	RM84751612	R, METAL MK24K75FECZ.	BU00001145	POWER RING W/LED 4TQF-13 14x14	
R127, 128	RM84753610	R, METAL MK2475KFECZ.	KB20002681	POWER BUTTON 4TQF-15 14x14	
R129, 130	RM84752616	R, METAL MK247K5FECZ.	OM10001260	ORNAMENTAL SIDE BOARD 4TR-2797#1	
R131, 132	RM81000619	R, METAL MK2100RFECZ.	DD40000095	L.E.D SEL1124R	
R133, 134	RM81003610	R, METAL MK2100KFECZ.	OM70000065	PUSH BUTTON CONNECTOR 4TTL-15	
C101, 102	CP71011353	CAP, P.P. 100V 100P	SN00000179	BUTTON SPRING 4TR-1988A#2 10F	
C103, 104	CS33311310	CAP, POLYSTYRENE 160V 330P	AU00001389	TOP COVER QN3-03A02T	
C105, 106	CS32212300	CAP, POLYSTYRENE 160V 22P	SR00000882	UPPER COVER SPACER 4TR-2418	
C111-114	CE51005679	CAP, ELEC. 25BGF100M	FL00001270	STYROL SIDE MOULDING 3TR-3034 TZ-192	
C115, 116	CP71010300	CAP, P.P. 100V 1000P	TN10004542	INSIDE CARTON 4TR-3035#6	
C117, 118	CE51006477	CAP, ELEC. 50BGF10M			
C119, 120	CS36810300	CAP, POLYSTYRENE 160V 6800P			
C121, 122	CE51006477	CAP, ELEC. 50BGF10M			
C123-126	CP61008321	CAP, M.P. 100V 0.1uF			
C127-130	CE51005679	CAP, ELEC. 25BGF100M			
D101-106	DD10000100	DIODE IN4148-85			
Q101-104	TR40000100	TRANSISTOR 2SD786R/S			
Q105, 106	TR30000212	TRANSISTOR 2SD2362F			
IC101, 102	IC00003525	IC AD744JN			
IC103, 104	IC00001735	IC NE5534AN			
RY101	LY00000277	RELAY RSB-24-S			
R901, 902	RM81501610	R, METAL MK201K5FECZ.			
R903	RD23301820	R, CARBON 3.3K 1/4W J			
R904, 905	RD23902827	R, CARBON 39K 1/4W J			
R906	RD26803824	R, CARBON 680K 1/4W J			
C901-904	CC01009256	CAP, CERAMIC 250V 0.01uF Δ			
C905, 906	CE64704449	CAP, ELEC. LGS1H472MHS			
C907, 908	CE71004255	CAP, ELEC. 25V 1000uF			
C909-912	CE51005679	CAP, ELEC. 25BGF100M			
C913	CE04706508	CAP, ELEC. 50V 47uF			
C914	CE01005350	CAP, ELEC. 35V 100uF			
D901	DD10000380	DIODE BRIDGE PBPC604 Δ			
D902-905	DD10000100	DIODE IN4148-85			
D906, 907	DD20000041	DIODE RD-18E			
D910	DD10000100	IN4148-85			
Q901	TR40000069	TRANSISTOR 2SD600KE/KF			
Q902, 904	TR10000047	TRANSISTOR 2SB631KE/KF			
Q903	TR40000069	TRANSISTOR 2SD600KE/KF			
Q907	TR30000327	TRANSISTOR 2SC536G-NP			
Q908	TR10000126	TRANSISTOR 2SA608KF/KG			
SW2	SH11000367	1 KEY PUSH SW 4TR-2783 4U			
JK101, 103	JF02000211	2P PIN JACK 4TR-2166-4			
TX314114 PCB ASSEMBLY					
C001	CK00000035	SPARK KILLER DE7150F472M Δ			
SW101	SH40000120	POWER SW C-3600B-T Δ			
OTHERS					
AM00002165		PRINTED CHASS. BODY 2TPD-2B			
KB20002747		PUSH BUTTON PR4-07A00T 5F			
PT30510108		POWER TRANSFORMER TT-305-NF. I			
FT00000230		FOOT (PU) 4TR-2823#1 24Fx14H			
SP10006818		PANEL SUPPORT (L) QN4-04A00T			
SP10006820		PANEL SUPPORT (R) QN4-05A00T			