

ROTEL *hifi*

RB-985

5 CHANNEL POWER AMPLIFIER

Technical Manual

TABLE OF CONTENTS

Chassis Layout.....	1
Service to the Transformer.....	1
Specifications.....	2
Adjustment.....	2
PC Board Ass'y Parts List	3
Wiring Diagram	6
Schematic Diagram	8
Printed Circuit Boards	14

THE ROTEL CO., LTD.

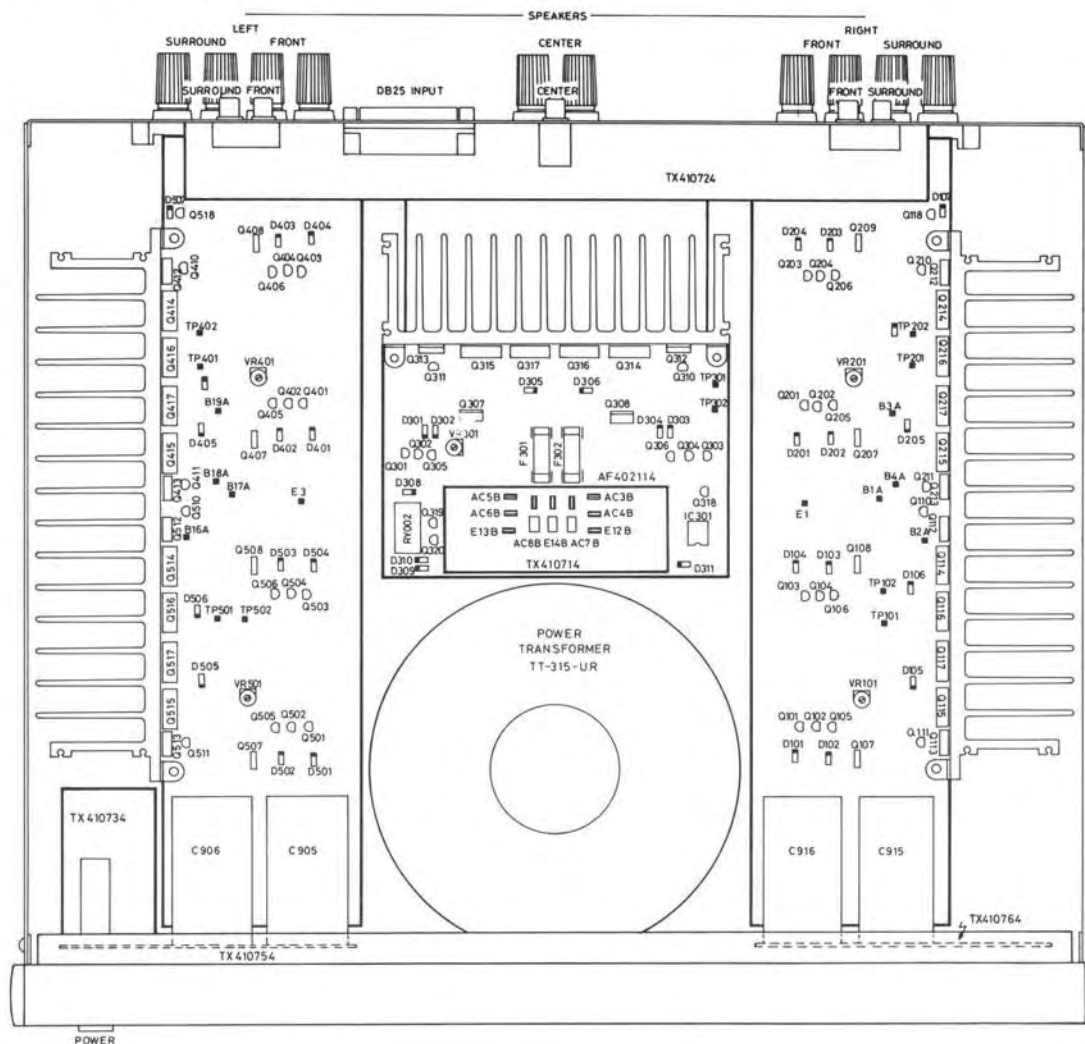
1-36-8, OHOKAYAMA, MEGURO-KU, TOKYO 152, JAPAN

ROTEL ELECTRONICS CO., LTD.

3F-2, NO.35, FU HSING NORTH ROAD, TAIPEI, TAIWAN, REPUBLIC OF CHINA

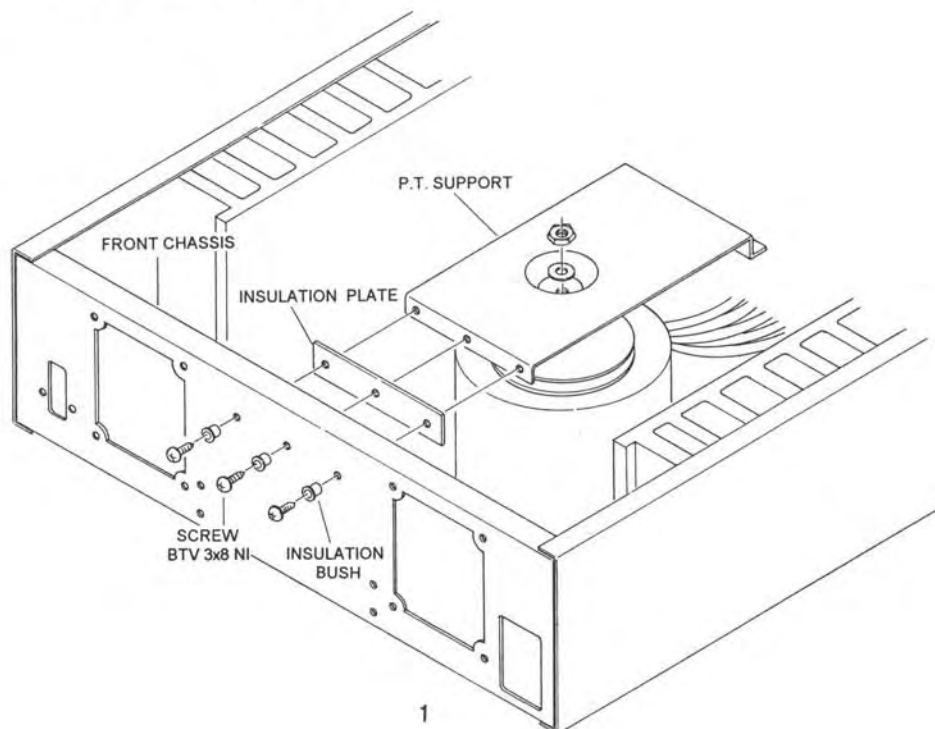
MN20002292

Chassis Layout



IMPORTANT

When replace the Power Transformer, please ensure to fit back the Insulation Bush and Insulation Plate between the Front Chassis and P.T. Support to keep them insulation completely. See the following illustration.



SPECIFICATIONS: RB 985 5 CHANNEL POWER AMPLIFIER

Continuous Power Output	100 watts/ch (20-20kHz 8 ohms, $\leq 0.03\%$ THD)
DIN Output	220 watts/ch (1 kHz 4 ohms, 1% THD)
Total Harmonic Distortion (20 Hz-20,000 Hz)	$< 0.03\%$
Intermodulation Distortion (60 Hz : 7 kHz, 4:1)	$< 0.03\%$
Frequency Response	10-80,000 Hz, ± 0.5 dB
Peak Current Output (0.1 ohm load, 10 microseconds, 1 pulse)	40 Amps
Damping Factor (20-20,000 Hz, 8 ohms)	180
Speaker Impedance	4 ohms minimum
Signal to Noise Ratio (IHF A network)	115 dB
Power Amplifier Input Impedance	27 k Ohms
Power Requirements	115 Volts, 60 Hz or 230 Volts, 50 Hz
Power Consumption, Max.	800 Watts
Dimensions	440 mm (W) x 139 mm (H) x 396 mm (D) 17-3/8" (W) x 5-1/2" (H) x 15-5/8" (D)
Weight	15.5 kg's, 34.1 lbs

All specifications are accurate at the time of printing. Rotel reserves the right to make improvements without notice.

THX and the THX logo are registered trademarks of Lucasfilm Ltd.

Power Amplifier Bias Adjustment

Instruments:DC milli-voltmeter

Notes:Please power switch on and adjust the DC milli-voltmeter to 5 mV.

Step	Coupling		Adjust	Adjust for
	Plus Lead	Minus Lead		
1	TP102	TP101	VR101	DC milli-voltmeter reads 5 mV
2	TP202	TP201	VR201	
3	TP301	TP302	VR301	
4	TP401	TP402	VR401	
5	TP501	TP502	VR501	

Parts List

NOTE:THE COMPONENTS INDENTIFIED BY Δ MARK ARE FOR SAFFTY.REPLACE ONLY WITH ORIGINAL PARTS.DO NOT SUBSTITUTE.

SYMBOL	PARTS NO.	DESCRIPTION	SYMBOL	*PARTS NO.	DESCRIPTION
	TX410734 PCB ASSEMBLY		C403	CS32211306	CAP,POLYSTYRENE 160V 220PF
C801	CK00000035	SPARK KILLER DE7150F472M Δ	C404	CE51005679	CAP,ELEC. 25BGF100M
SW01	SH40000167	POWER SW C-4176A02 TV-8 Δ	C405	CE51006477	CAP,ELEC. 50BGF10M
	TX410744 PCB ASSEMBLY		C406	CS33311310	CAP,POLYSTYRENE 160V 330PF
DD701-705	DD40000095	LED SEL1124R	C407,408	CS32211306	CAP,POLYSTYRENE 160V 220PF
	TX410754 PCB ASSEMBLY		C409	CC45013484	CAP,CERAMIC 50V 5PF
R901,902	RM15601220	R,METAL 5.6K 2W	C410	CP62208330	CAP,M.P. 100V 0.22uF K
R903,904	RM93301220	R,METAL 3.3K 2W	C411,412	CE01005635	CAP,ELEC. 63V 100uF
R905	RM53321814	R,METAL 3.32K 1/4W	C413	CE42206507	CAP,ELEC. 50V 22uF
C901-904	CC41009164	CAP,CERAMIC 0.01uF 500V	C415,416	CM11008422	CAP,MYLAR 50V 104 J
C905,906	CE11503449	CAP,ELEC. LPW153M1JQ70VUM	C417,418	CE41006500	CAP,ELEC. 50V 10uF
C907,908	CE02205449	CAP,ELEC. 220uF 63V	VR401	RV40000022	R,SEMI-FIXED
C909,910	CE41005257	CAP,ELEC. 100uF 25V			VM6CKPV-1S-B 2.2K
D901	DD10000524	DIODE BRIDGE MP-254W	RY003	LY00000277	RELAY RY-24W-K Δ
D902-905	DD80000010	DIODE DETECT IN4003-TB	L401	LC23310002	ANTI-PARASITIC COIL TRL-331
D906,907	DD20000570	DIODE ZENER RD15JS-T1	D401-404	DD80000021	DIODE DETECT IN4148-86
F901-904	FU25000041	FUSE 125V 6A UL Δ			
	FU23000219	FUSE 250V T6.3A S Δ	D405,406	DD80000010	DIODE DETECT IN4003-TB
	TX410764 PCB ASSEMBLY		D410	DD80000021	DIODE DETECT IN4148-86
R906,907	RM15601220	R,METAL 5.6K 2W	IC401	IC00000019	IC LA6458D
R908-911	RM93301220	R,METAL 3.3K 2W	Q401,402	TR31000083	TRANSISTOR 2SC2362F
C911-914	CC41009164	CAP,CERAMIC 0.01uF 500V	Q403-405	TR11000039	TRANSISTOR 2SA1016F
C915,916	CE11503449	CAP,ELEC. LPW153M1JQ70VUM			
C917,918	CE02205449	CAP,ELEC. 220uF 63V	Q406	TR31000083	TRANSISTOR 2SC2362F
D908-911	DD80000010	DIODE DETECT IN4003-TB	Q407	TR10000217	TRANSISTOR 2SA1209-ST
D912	DD10000524	DIODE BRIDGE MP-254W	Q408	TR30000571	TRANSISTOR 2SC2911-ST
D913-916	DD20000570	DIODE ZENER RD15JS-T1	Q410	TR11000076	TRANSISTOR T2SA1376T-LKU
F905-908	FU25000041	FUSE 125V 6A UL Δ	Q411	TR31000137	TRANSISTOR T2SC3478T-LKU
	FU23000219	FUSE 250V T6.3A S Δ			
	TX410774 PCB ASSEMBLY		Q412	TR10000291	TRANSISTOR 2SA1667 (O,Y)
Q109	TR40000161	TRANSISTOR 2SD1953	Q413	TR30000560	TRANSISTOR 2SC4381 (O,Y)
Q209	TR40000161	TRANSISTOR 2SD1953	Q414,416	TR10000278	TRANSISTOR 2SA1429(O,P,Y)
Q309	TR40000161	TRANSISTOR 2SD1953	Q415,417	TR30000534	TRANSISTOR 2SC3856 (O,P,Y)
Q409	TR40000161	TRANSISTOR 2SD1953	Q418	TR11000039	TRANSISTOR 2SA1016F
Q509	TR40000161	TRANSISTOR 2SD1953			
	AF401214 PCB ASSEMBLY		R501	RL81001610	R,METAL MK2001KFE
R401	RL81001610	R,METAL MK2001KFE	R502	RL84700614	R,METAL MK2470RFE
R402	RL84700614	R,METAL MK2470RFE	R503	RL83302613	R,METAL MK2033KFE
R403	RL83302613	R,METAL MK2033KFE	R504	RM81651618	R,METAL MK21K65FECZ.
R404	RM81651618	R,METAL MK21K65FECZ.	R505-507	RL81501618	R,METAL MK201K5FE
R405-407	RL81501618	R,METAL MK201K5FE			
R408	RM89760615	R,METAL MK2976RFEFZ.	R508	RM89760615	R,METAL MK2976RFEFZ.
R409,410	RL82200614	R,METAL MK2220RFE	R509,510	RL82200614	R,METAL MK2220RFE
R411	RL84702611	R,METAL MK2047KFE	R511	RL84702611	R,METAL MK2047KFE
R412,413	RL81000671	R,METAL MK2100RFE	R512,513	RL81000671	R,METAL MK2100RFE
R414	RL81202615	R,METAL MK2012KFE	R514	RL81202615	R,METAL MK2012KFE
R415	RL84701618	R,METAL MK204K7FE			
R416	RM82802616	R,METAL MK228K0FECZ.	R515	RL84701618	R,METAL MK204K7FE
R417,418	RL81001610	R,METAL MK2001KFE	R516	RM82802616	R,METAL MK228K0FECZ.
R419	RL84709617	R,METAL MK2047RFE	R517,518	RL81001610	R,METAL MK2001KFE
R420-423	RS20228230	R,SQUARE TYPE MPC70-0.22	R519	RL84709617	R,METAL MK2047RFE
R424	RM93508226	R,METAL 3.5J 2W	R520-523	RS20228230	R,SQUARE TYPE MPC70-0.22
R425,426	RL83309619	R,METAL MK2033RFE			
R427	RM51210818	R,METAL 121 F 1/4W	R524	RM93508226	R,METAL 3.5J 2W
R428	RM52210814	R,METAL 221 F 1/4W	R525,526	RL83309619	R,METAL MK2033RFE
R429,430	RL81004611	R,METAL MK2001MFE	R527	RM51210818	R,METAL 121 F 1/4W
			R528	RM52210814	R,METAL 221 F 1/4W
			R529,530	RL81004611	R,METAL MK2001MFE
R431,432	RL81003618	R,METAL MK2100KFE	R531,532	RL81003618	R,METAL MK2100KFE
R433	RL84703615	R,METAL MK2470KFE	R533	RL84703615	R,METAL MK2470KFE
C401	CE54707478	R,METAL 50BGF4R7M	R534	RM52213815	R,METAL 221K 1/4W
C402	CP76811359	CAP,P.P 100V 680P	R535	RM53570814	R,METAL 357 F 1/4W
			R536	RM56810812	R,METAL 681 F 1/4W
			R537	RM58251814	R,METAL 8.25K F 1/4W
			R538	RM92201125	R,METAL 2.2K J 1/4W
			R539	RM58251814	R,METAL 8.25K F 1/4W
			C501	CE54707478	R,METAL 50BGF4R7M
			C502	CP76811359	CAP,P.P 100V 680P
			C503	CS32211306	CAP,POLYSTYRENE 160V 220PF
			C504	CE51005679	CAP,ELEC. 25BGF100M
			C505	CE51006477	CAP,ELEC. 50BGF10M
			C506	CS33311310	CAP,POLYSTYRENE 160V 330PF
			C507,508	CS32211306	CAP,POLYSTYRENE 160V 220PF
			C509	CC45013484	CAP,CERAMIC 50V 5PF
			C510	CP62208330	CAP,M.P. 100V 0.22uF K
			C511,512	CE01005635	CAP,ELEC. 63V 100uF

Parts List

SYMBOL	PARTS NO.	DESCRIPTION
C514	CE41005257	CAP,ELEC. 25V 100uF
C515, 516	CM11008422	CAP,MYLAR 50V 104 J
C517, 518	CE41006500	CAP,ELEC. 50V 10uF
C519	CE41005257	CAP,ELEC. 25V 100uF
VR501	RV40000022	R,SEMI-FIXED VM6CKPV-1S-B 2.2K
L501	LC23310002	ANTI-PARASITIC COIL TRL-331
D501-504	DD80000021	DIODE DETECT IN4148-86
D505, 506	DD80000010	DIODE DETECT IN4003-TB
D507, 508	DD80000021	DIODE DETECT IN4148-86
D509	DD20000624	DIODE ZENER RD24JS-T1
D510	DD80000021	DIODE DETECT IN4148-86
TH501	DD60000260	THERMISTOR TD5C350D
IC501	IC00000019	IC LA6458D
5401, 502	TR31000083	TRANSISTOR 2SC2362F
Q503-505	TR11000039	TRANSISTOR 2SA1016F
Q506	TR31000083	TRANSISTOR 2SC2362F
Q507	TR10000217	TRANSISTOR 2SA1209-ST
Q508	TR30000571	TRANSISTOR 2SC2911-ST
Q510	TR11000076	TRANSISTOR T2SA1376T-LKU
Q511	TR31000137	TRANSISTOR T2SC3478T-LKU
Q512	TR10000291	TRANSISTOR 2SA1667 (O,Y)
Q513	TR30000560	TRANSISTOR 2SC4381 (O,Y)
Q514, 516	TR10000278	TRANSISTOR 2SA1429(O,P,Y)
Q515, 517	TR30000534	TRANSISTOR 2SC3856 (O,P,Y)
Q518	TR11000039	TRANSISTOR 2SA1016F
Q519	TR31000034	TRANSISTOR 2SC536G-NP-AA
Q520	TR31000083	TRANSISTOR 2SC2362F
	AF401224 PCB	ASSEMBLY
R101	RL81001610	R,METAL MK2001KFE
R102	RL84700614	R,METAL MK2470RFE
R103	RL83302613	R,METAL MK2033KFE
R104	RM81651618	R,METAL MK21K65FECZ.
R105-107	RL81501618	R,METAL MK201K5FE
R108	RM89760615	R,METAL MK2976RFECH.
R109, 110	RL82200614	R,METAL MK2220RFE
R111	RL84702611	R,METAL MK2047KFE
R112, 113	RL81000671	R,METAL MK2100RFE
R114	RL86801616	R,METAL MK206K8FE
R115	RL84701618	R,METAL MK204K7FE
R116	RM82802616	R,METAL MK228K0FECZ.
R117, 118	RL81001610	R,METAL MK2001KFE
R119	RL84709617	R,METAL MK2047RFE
R120-123	RS20228230	R,SQUARE TYPE MPC70-0.22
R124	RM93508226	R,METAL 3.5J 2W
R125, 126	RL83309619	R,METAL MK2033RFE
R127	RM51210818	R,METAL 121 F 1/4W
R128	RM52210814	R,METAL 221 F 1/4W
R129, 130	RL81004611	R,METAL MK2001MFE
R131, 132	RL81003618	R,METAL MK2100KFE
R133	RL84703615	R,METAL MK2470KFE
C101	CE54707478	R,METAL 50BGF4R7M
C102	CP76811359	CAP,P.P 100V 680P
C103	CS32211306	CAP,POLYSTYRENE 160V 220PF
C104	CE51005679	CAP,ELEC. 25BGF100M
C105	CE51006477	CAP,ELEC. 50BGF10M
C106	CS33311310	CAP,POLYSTYRENE 160V 330PF
C107, 108	CS32211306	CAP,POLYSTYRENE 160V 220PF
C109	CC45013484	CAP,CERAMIC 50V 5PF
C110	CP62208330	CAP,M.P. 100V 0.22uF K
C111, 112	CE01005635	CAP,ELEC. 63V 100uF
C115, 116	CM11008422	CAP,MYLAR 50V 104 J
C117, 118	CE41006500	CAP,ELEC. 50V 10uF
C114, 119	CE41005257	CAP,ELEC. 25V 100uF
VR101	RV40000022	R,SEMI-FIXED VM6CKPV-1S-B 2.2K
RY001	LY00000277	RELAY RY-24W-K !
L101	LC23310002	ANTI-PARASITIC COIL TRL-331
D101-104	DD80000021	DIODE DETECT IN4148-86

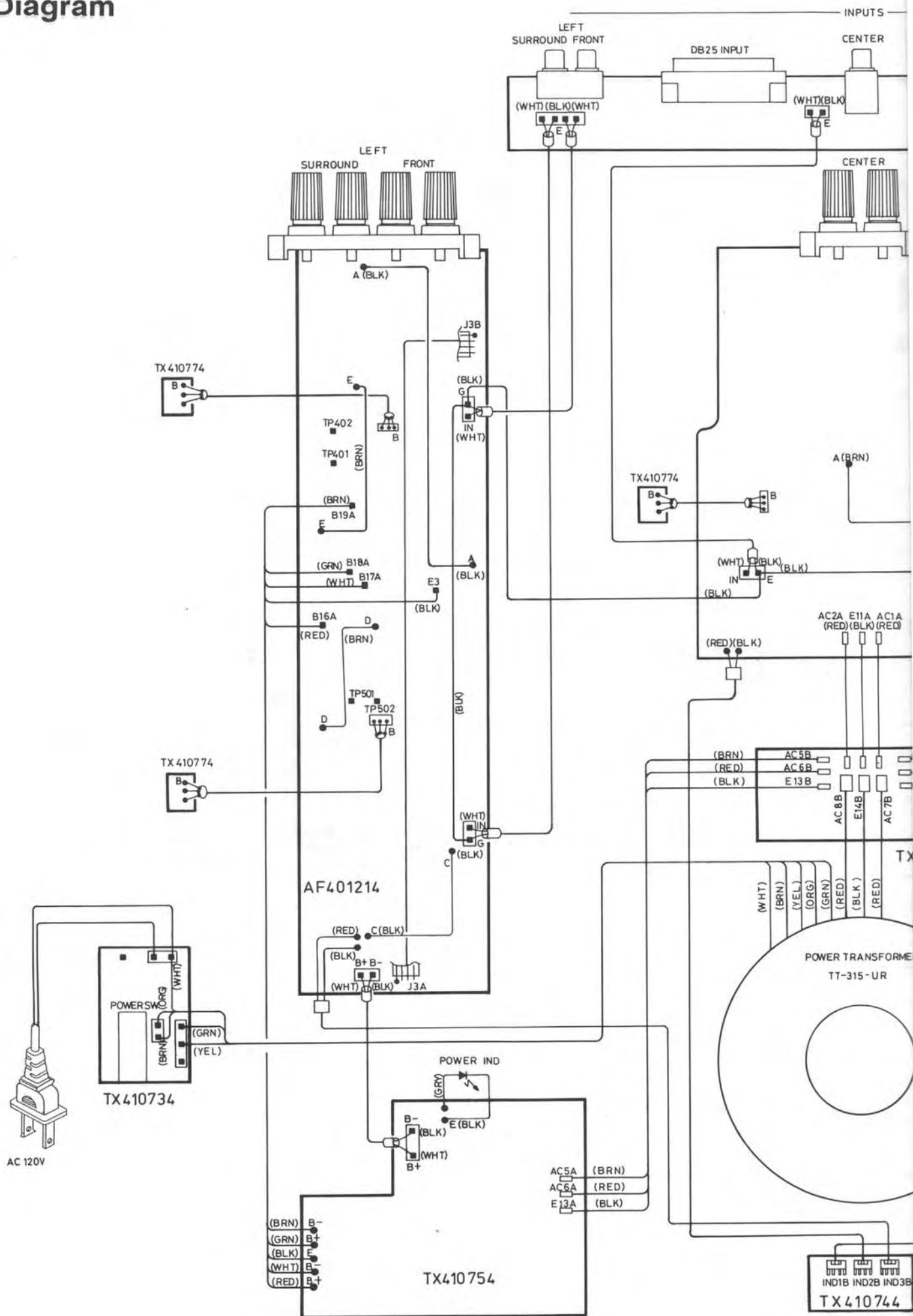
SYMBOL	PARTS NO.	DESCRIPTION
D105, 106	DD80000010	DIODE DETECT IN4003-TB
D110	DD80000021	DIODE DETECT IN4148-86
IC101	IC00000019	IC LA6458D
Q101, 102	TR31000083	TRANSISTOR 2SC2362F
Q103-105	TR11000039	TRANSISTOR 2SA1016F
Q106	TR31000083	TRANSISTOR 2SC2362F
Q107	TR10000217	TRANSISTOR 2SA1209-ST
Q108	TR30000571	TRANSISTOR 2SC2911-ST
Q110	TR11000076	TRANSISTOR T2SA1376T-LKU
Q111	TR31000137	TRANSISTOR T2SC3478T-LKU
Q112	TR10000291	TRANSISTOR 2SA1667 (O,Y)
Q113	TR30000560	TRANSISTOR 2SC4381 (O,Y)
Q114, 116	TR10000278	TRANSISTOR 2SA1429(O,P,Y)
Q115, 117	TR30000534	TRANSISTOR 2SC3856 (O,P,Y)
Q118	TR11000039	TRANSISTOR 2SA1016F
TH101	DD60000260	THERMISTOR TD5C350D
R201	RL81001610	R,METAL MK2001KFE
R202	RL84700614	R,METAL MK2470RFE
R203	RL83302613	R,METAL MK2033KFE
R204	RM81651618	R,METAL MK21K65FECZ.
R205-207	RL81501618	R,METAL MK201K5FE
R208	RM89760615	R,METAL MK2976RFECH.
R209, 210	RL82200614	R,METAL MK2220RFE
R211	RL84702611	R,METAL MK2047KFE
R212, 213	RL81000671	R,METAL MK2100RFE
R214	RL86801616	R,METAL MK206K8FE
R215	RL84701618	R,METAL MK204K7FE
R216	RM82802616	R,METAL MK228K0FECZ.
R217, 218	RL81001610	R,METAL MK2001KFE
R219	RL84709617	R,METAL MK2047RFE
R220-223	RS20228230	R,SQUARE TYPE MPC70-0.22
R224	RM93508226	R,METAL 3.5J 2W
R225, 226	RL83309619	R,METAL MK2033RFE
R227	RM51210818	R,METAL 121 F 1/4W
R228	RM52210814	R,METAL 221 F 1/4W
R229, 230	RL81004611	R,METAL MK2001MFE
R231, 232	RL81003618	R,METAL MK2100KFE
R233	RL84703615	R,METAL MK2470KFE
R234	RM52213815	R,METAL 221K 1/4W
R235	RM53570814	R,METAL 357 F 1/4W
R236	RM56810812	R,METAL 681 F 1/4W
R237	RM58251814	R,METAL 8.25K F 1/4W
R238	RM92201125	R,METAL 2.2K J 1/4W
R239	RM58251814	R,METAL 8.25K F 1/4W
C201	CE54707478	R,METAL 50BGF4R7M
C202	CP76811359	CAP,P.P 100V 680P
C203	CS32211306	CAP,POLYSTYRENE 160V 220PF
C204	CE51005679	CAP,ELEC. 25BGF100M
C205	CE51006477	CAP,ELEC. 50BGF10M
C206	CS33311310	CAP,POLYSTYRENE 160V 330PF
C207, 208	CS32211306	CAP,POLYSTYRENE 160V 220PF
C209	CC45013484	CAP,CERAMIC 50V 5PF
C210	CP62208330	CAP,M.P. 100V 0.22uF K
C211, 212	CE01005635	CAP,ELEC. 63V 100uF
C213	CE42206507	CAP,ELEC. 50V 22uF
C214	CE41005257	CAP,ELEC. 25V 100uF
C215, 216	CM11008422	CAP,MYLAR 50V 104 J
C217, 218	CE41006500	CAP,ELEC. 50V 10uF
C219	CE41005257	CAP,ELEC. 25V 100uF
VR201	RV40000022	R,SEMI-FIXED VM6CKPV-1S-B 2.2K
L201	LC23310002	ANTI-PARASITIC COIL TRL-331
D201-204	DD80000021	DIODE DETECT IN4148-86
D205, 206	DD80000010	DIODE DETECT IN4003-TB
D207, 208	DD80000021	DIODE DETECT IN4148-86
D209	DD20000624	DIODE ZENER RD24JS-T1
D210	DD80000021	DIODE DETECT IN4148-86
IC201	IC00000019	IC LA6458D

Parts List

SYMBOL	PARTS NO.	DESCRIPTION
Q202, 202	TR31000083	TRANSISTOR 2SC2362F
Q203-205	TR11000039	TRANSISTOR 2SA1016F
Q206	TR31000083	TRANSISTOR 2SC2362F
Q207	TR10000217	TRANSISTOR 2SA1209-ST
Q208	TR30000571	TRANSISTOR 2SC2911-ST
Q210	TR11000076	TRANSISTOR T2SA1376T-LKU
Q211	TR31000137	TRANSISTOR T2SC3478T-LKU
Q212	TR10000291	TRANSISTOR 2SA1667 (O, Y)
Q213	TR30000560	TRANSISTOR 2SC4381 (O, Y)
Q214, 216	TR10000278	TRANSISTOR 2SA1429 (O, P, Y)
Q215, 217	TR30000534	TRANSISTOR 2SC3856 (O, P, Y)
Q218	TR11000039	TRANSISTOR 2SA1016F
Q219	TR31000034	TRANSISTOR 2SC536G-NP-AA
Q220	TR31000083	TRANSISTOR 2SC2362F
AF402114 PCB ASSEMBLY		
R301	RL81001610	R, METAL MK2001KFE
R302	RL84700614	R, METAL MK2470RFE
R303	RL83302613	R, METAL MK2033KFE
R304	RM81651618	R, METAL MK21K65FECZ.
R305-307	RL81501618	R, METAL MK201K5FE
R308	RM89760615	R, METAL MK2976FECZ.
R309	RL82200614	R, METAL MK2220RFE
R311	RL84702611	R, METAL MK2047KFE
R312, 313	RL81000617	R, METAL MK2100RFE
R314	RL86801616	R, METAL MK206K8FE
R315	RL84701618	R, METAL MK204K7FE
R317	RM81651618	R, METAL MK228K0FECZ.
R319	RL84709617	R, METAL MK2047RFE
R318	RL81001610	R, METAL MK2001KFE
R320-323	RS20228230	R, SQUARE TYPE MPC70-0.22
R324	RM93508226	R, METAL 3.5 J 2W
R325, 326	RL83309619	R, METAL MK2033RFE
R327	RM51210818	R, METAL 121 F 1/4W
R328	RM52210814	R, METAL 221 F 1/4W
R329, 330	RL81004611	R, METAL MK2001MFE
R331	RL81003618	R, METAL MK2100KFE
R334	RL81003618	R, METAL MK2100KFE
R335	RM53570814	R, METAL 357 F 1/4W
R336	RL81001610	R, METAL MK2001KFE
R337	RM58251814	R, METAL 8.25K F 1/4W
R338	RM92201125	R, METAL 2.2K 1W
R339	RM58251814	R, METAL 8.25K F 1/4W
R340	RL84703615	R, METAL MK2470KFE
R341	RM56810812	R, METAL 681 F 1/4W
R342	RM52213815	R, METAL 221K 1/4W
R343, 344	RM15601220	R, METAL 5.6K 2W
C301	CE54707478	CAP, ELEC. 50BGF4R7M
C302	CP76811359	CAP, P.P TFKP2-100V681H
C303	CS32211306	CAP, POLYSTYRENE 160V 220P
C304	CE51005679	CAP, ELEC. 25BGF100M
C305	CE51006477	CAP, ELEC. 50BGF10M
C306	CS33311310	CAP, POLYSTYRENE 160V 330P
C307, 308	CS32211306	CAP, POLYSTYRENE 160V 220P
C309	CC45013484	CAP, CERAMIC 50V 5P
C310	CP62208330	CAP, M.P MKT-18-100V224K
C312	CE01005635	CAP, ELEC. 63V 100uF
C314	CE41005257	CAP, ELEC. 25V 100uF
C315, 316	CM11008422	CAP, MYLAR 50V 104 J
C317, 318	CE41006500	CAP, ELEC. 50V 10uF
C319	CE41005257	CAP, ELEC. 25V 100uF
C320	CE42206507	CAP, ELEC. 50V 22uF
C321-324	CC41009164	CAP, CERAMIC 50V 0.01uF
C325, 326	CE11003441	CAP, ELEC. 63V 10000uF
C327	CE01005635	CAP, ELEC. 63V 100uF
L301	LC23310002	ANTI-PARASITIC TRL-331
VR301	RV40000022	R, SEMI-FIXED VM6CKPV-1S-B 2.2K

SYMBOL	PARTS NO.	DESCRIPTION
RY002	LY00000277	RELAY RY-24W-K
IC301	IC00000019	IC NJM4558DD
TH301	DD60000260	THERMISTOR TD5C350D
Q301, 302	TR31000083	TRANSISTOR 2SC2362F
Q303-305	TR11000039	TRANSISTOR 2SA1016F
Q306	TR31000083	TRANSISTOR 2SC2362F
Q307	TR10000217	TRANSISTOR 2SA1209-ST
Q308	TR30000571	TRANSISTOR 2SC2911-ST
Q310	TR11000076	TRANSISTOR T2SA1376T-LKU
Q311	TR31000137	TRANSISTOR T2SC3478T-LKU
Q312	TR10000291	TRANSISTOR 2SA1667 (O, Y)
Q313	TR30000560	TRANSISTOR 2SC4381 (O, Y)
Q314, 316	TR10000278	POWER TRANSISTOR 2SA1492
Q315, 317	TR30000534	POWER TRANSISTOR 2SC3856
Q318	TR11000039	TRANSISTOR 2SA1016F
Q319	TR31000034	TRANSISTOR 2SC536G-NP-AA
Q320	TR31000083	TRANSISTOR 2SC2362F
D301-304	DD80000021	DIODE DETECT IN4148-86
D305, 306	DD80000010	DIODE DETECT IN4003-TB
D308	DD80000021	DIODE DETECT IN4148-86
D309	DD20000624	DIODE ZENER RD24JS-T1
D310, 311	DD80000021	DIODE DETECT IN4148-86
D312	DD10000147	DIODE KBPC-802
F301, 302	FU25000041	FUSE 125V 6A UL
	FU23000219	FUSE 250V T6.3A S
OTHERS		
	AB00000900	BOTTOM BOARD 2TPK-16
	AF20000362	FRONT CHASSIS 2TPK-2A
	AR20000814	PRINTED REAR CHASSIS TRP-674
	AS01000506	SIDE CHASSIS (L) 2TPK-12
	AS02000307	SIDE CHASSIS (R) 2TPK-13
	PT31516209	POWER TRANSFORMER TT-315-UR
	BU000001406	INSULATION RING 4TR-3071
	FT000000229	PLASTIC FOOT 4TSH-19#2 50Fx14
	SP10007203	P.T SUPPORT (A) 3TPK-5
	SP10007215	P.T SUPPORT (B) 3TPK-7
	SP10007379	P.C.B CENTER SUPPORT (L) 2TPK-15
	SP10007380	P.C.B CENTER SUPPORT (R) 2TPK-14
	SP40000917	P.T SHIELD BOARD 4TPK-18
	SR000001345	SILICON RUBBER SPACER 4TPK-17
	CD000000231	AC CORD SPT-3 AWG#16 4TR-670#6 (U, C, A, J) !
	CD000000322	AC POWER CORD 4TR-2757(D)
	CD000000553	AC POWER CORD 4TR-3209 (H, E, S1, Y)
	CD000000115	AC POWER CORD C-3763-T(G1)
	CD000000516	AC CORD 4TR-3061 (K1)
	AA20000828	FRONT PANEL 2TPK-1
	BU000001145	POWER RING W/LED 4TQF-13
	KB20002681	POWER BUTTON 4TQF-15
	OM10001867	ORNAMENTAL SIDE BOARD 4TR-2979#4 H-127MM
	OM700000065	PUSH BUTTON CONNECTOR 4TTL-15
	SN000000179	BUTTON SPRING 4TR-1988#2
	AU000001420	UPPER BOARD 3TPK-6B
	FE000000080	FELT 4TR-1087
	MN10003621	OWNER'S MANUAL RB-985
	PL000001245	STYROL SIDE MOULDING 3TQZ-10 TZ-190

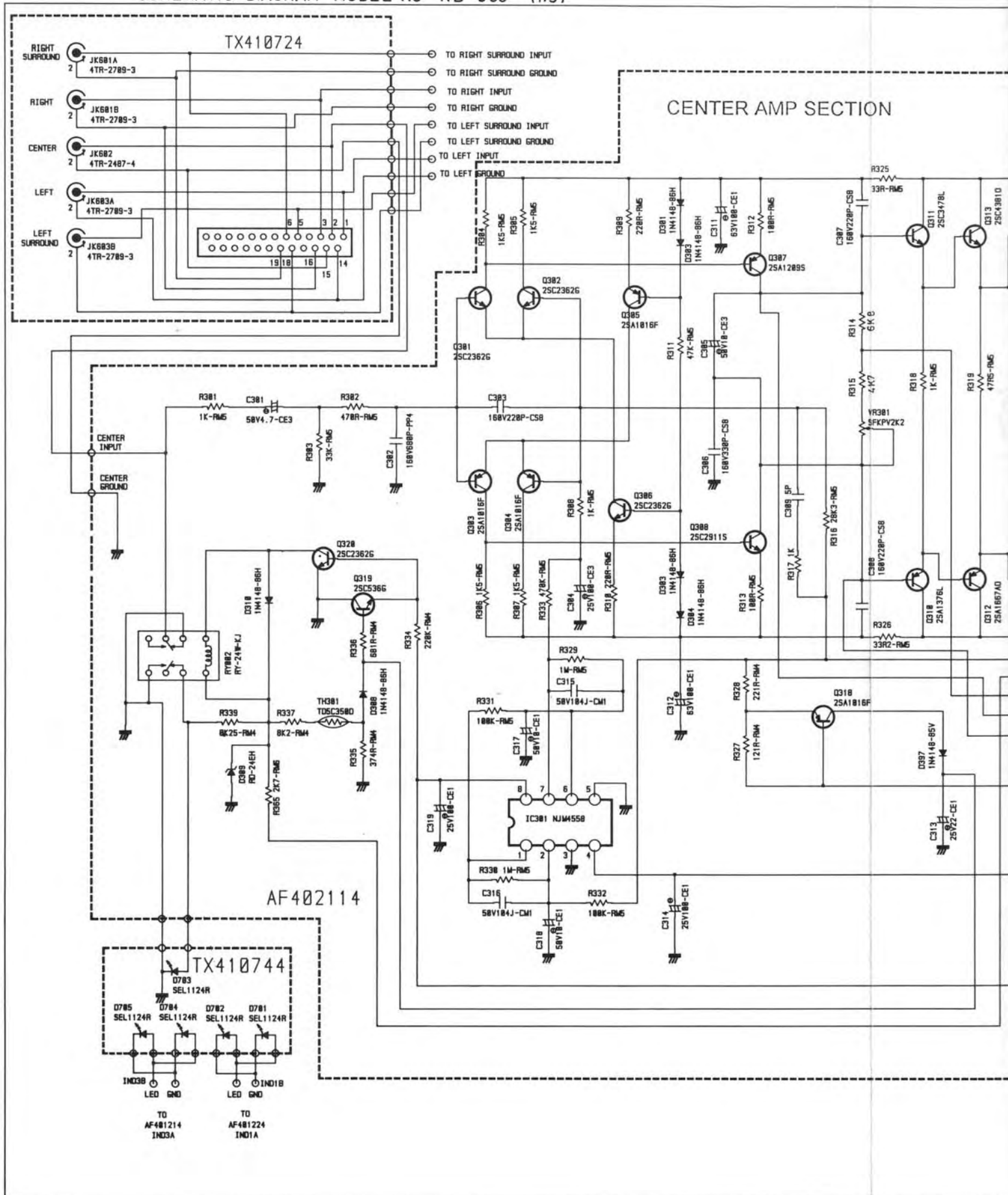
Wiring Diagram



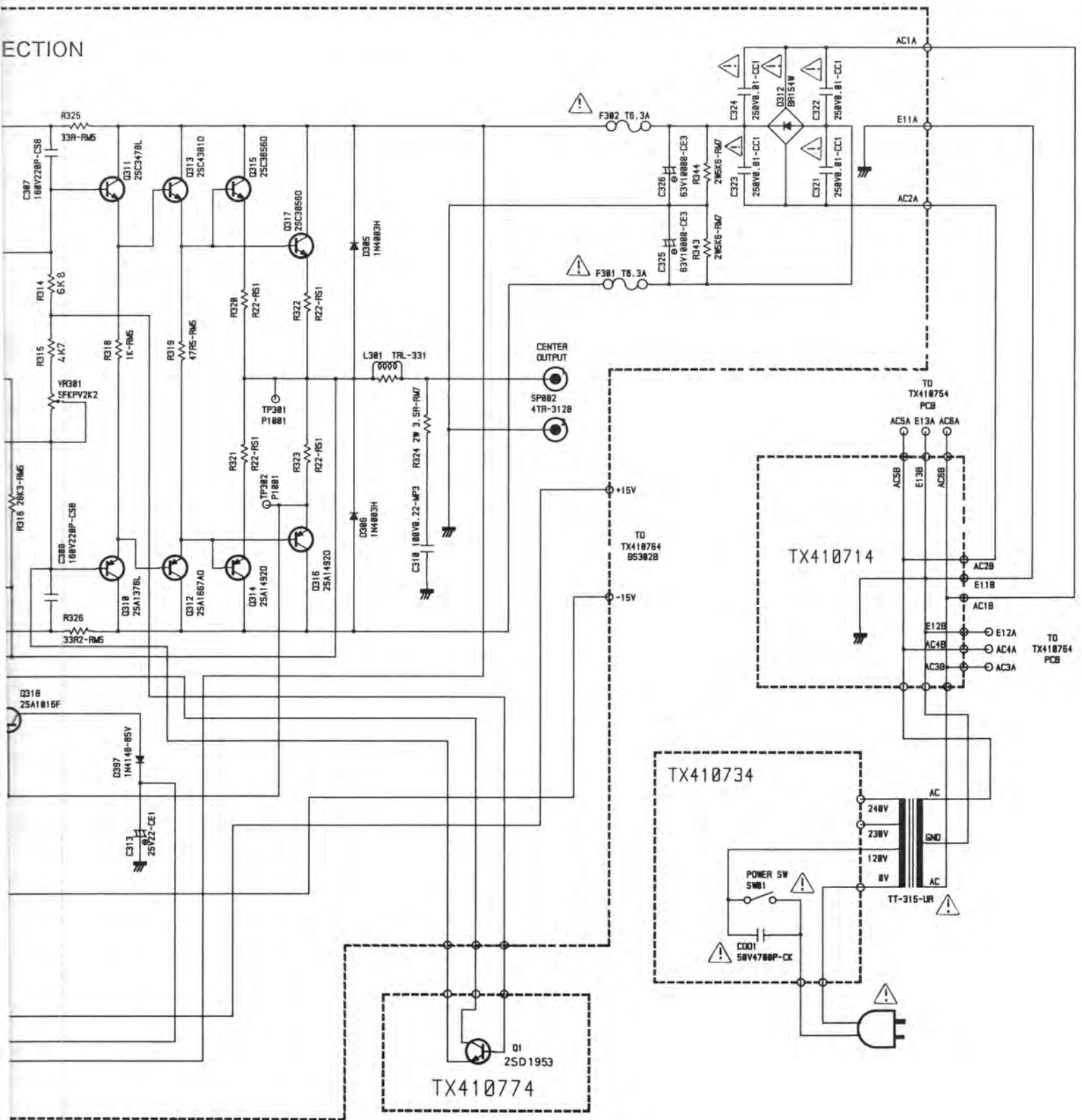


Schematic Diagram

SCHEMATIC DIAGRAM MODEL NO RB-985 (1/3)

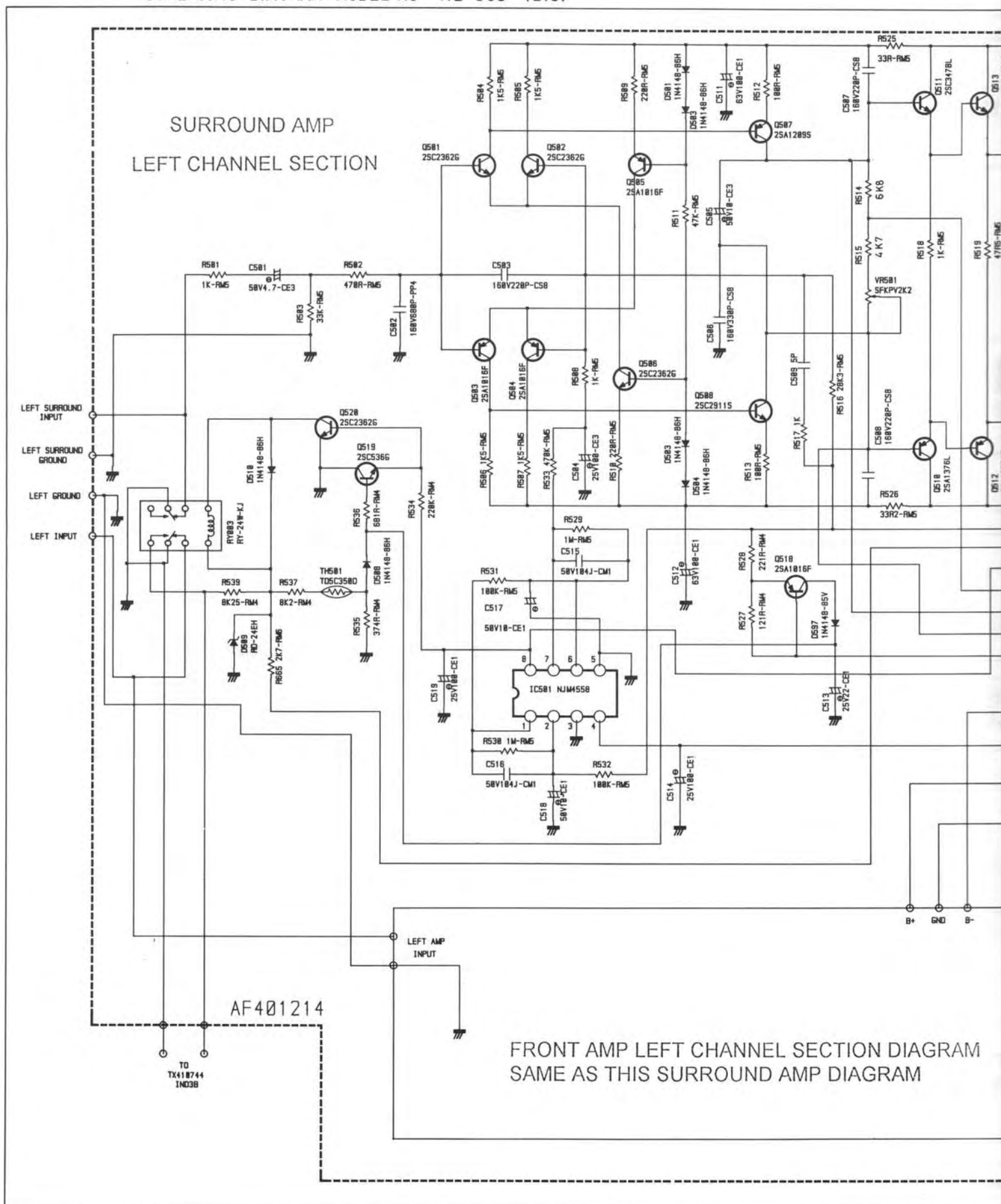


SECTION



Schematic Diagram

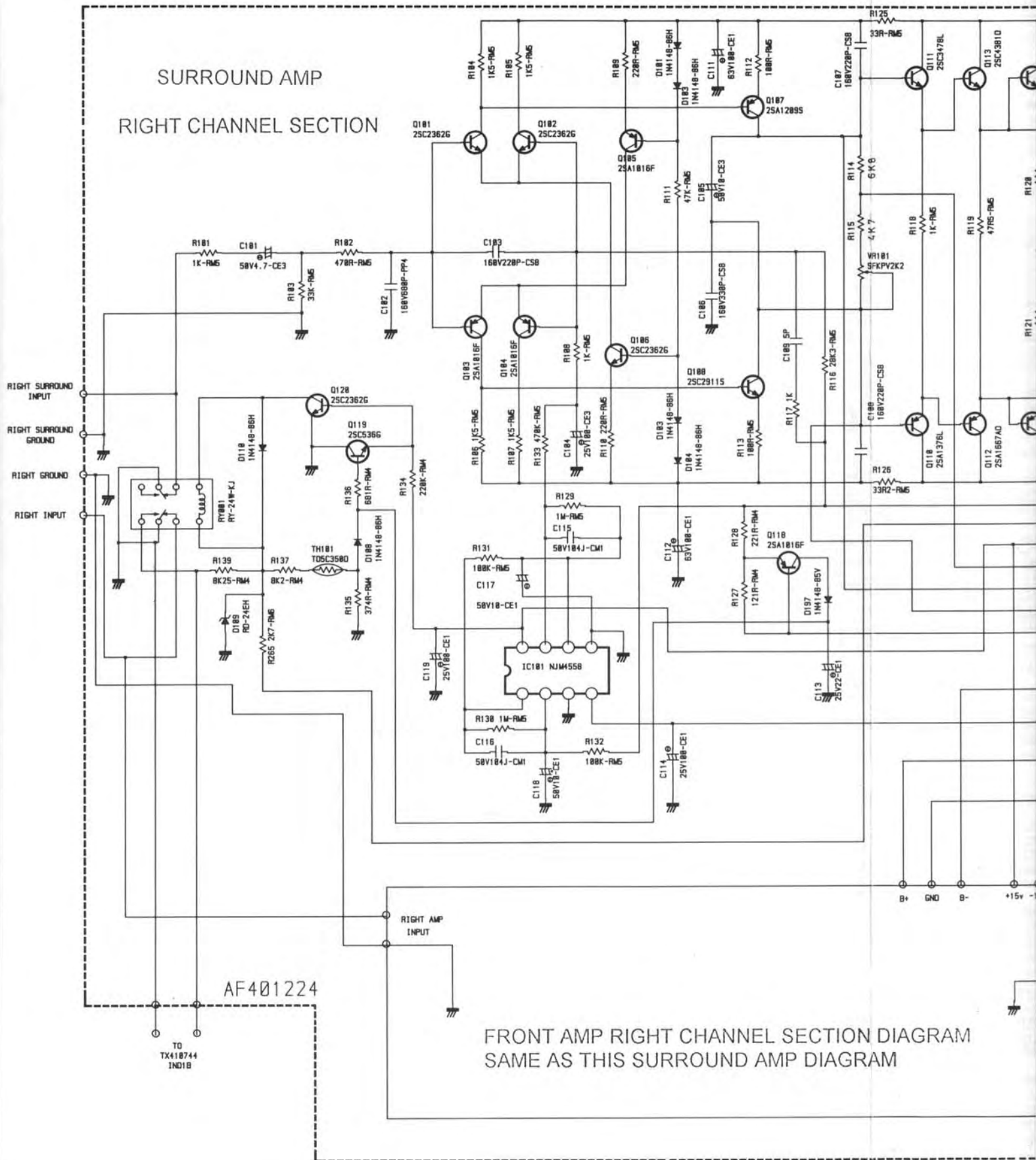
SCHEMATIC DIAGRAM MODEL NO RB-985 (2/3)



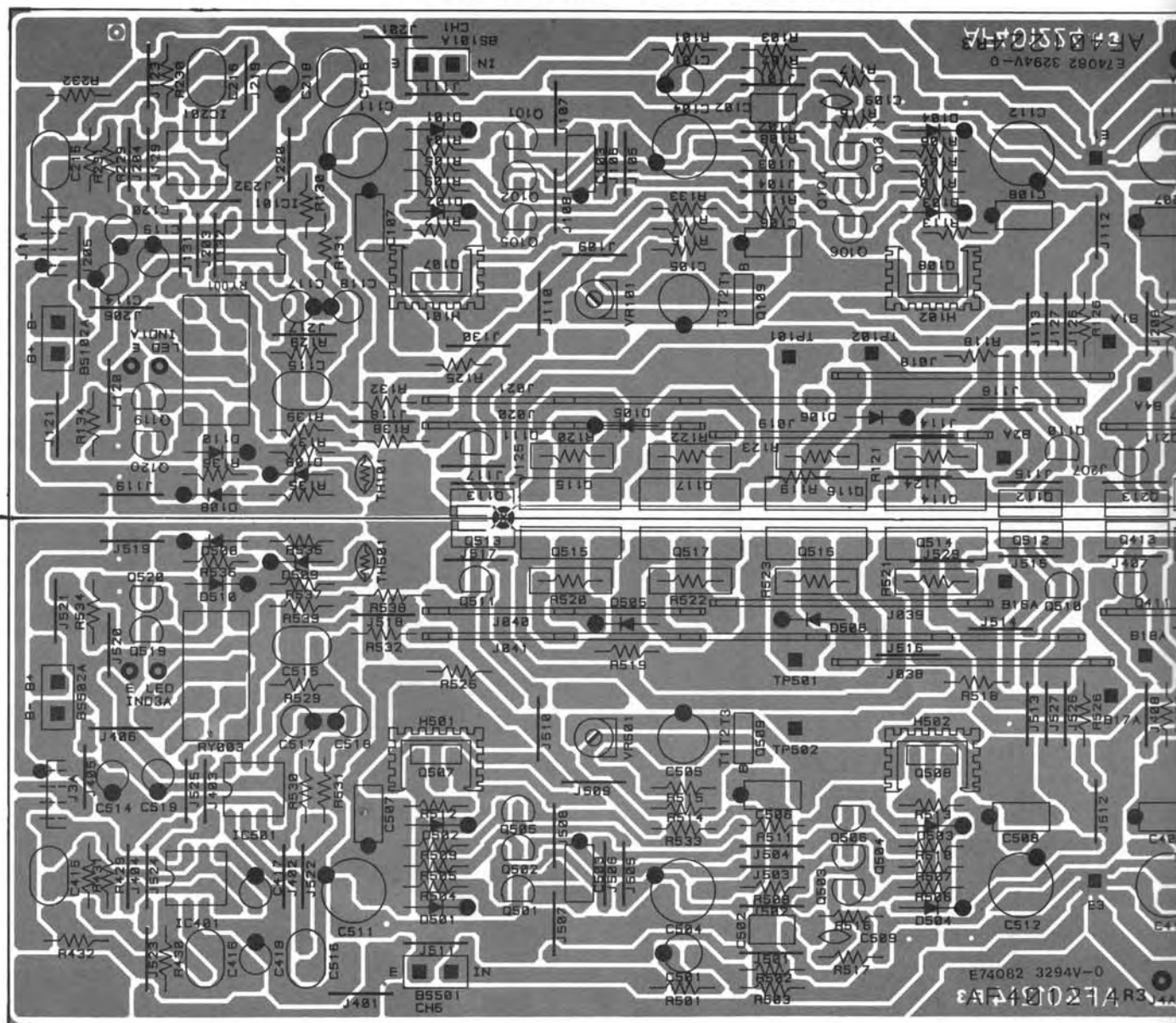
Schematic Diagram

SCHEMATIC DIAGRAM MODEL NO RB-985 (3/3)

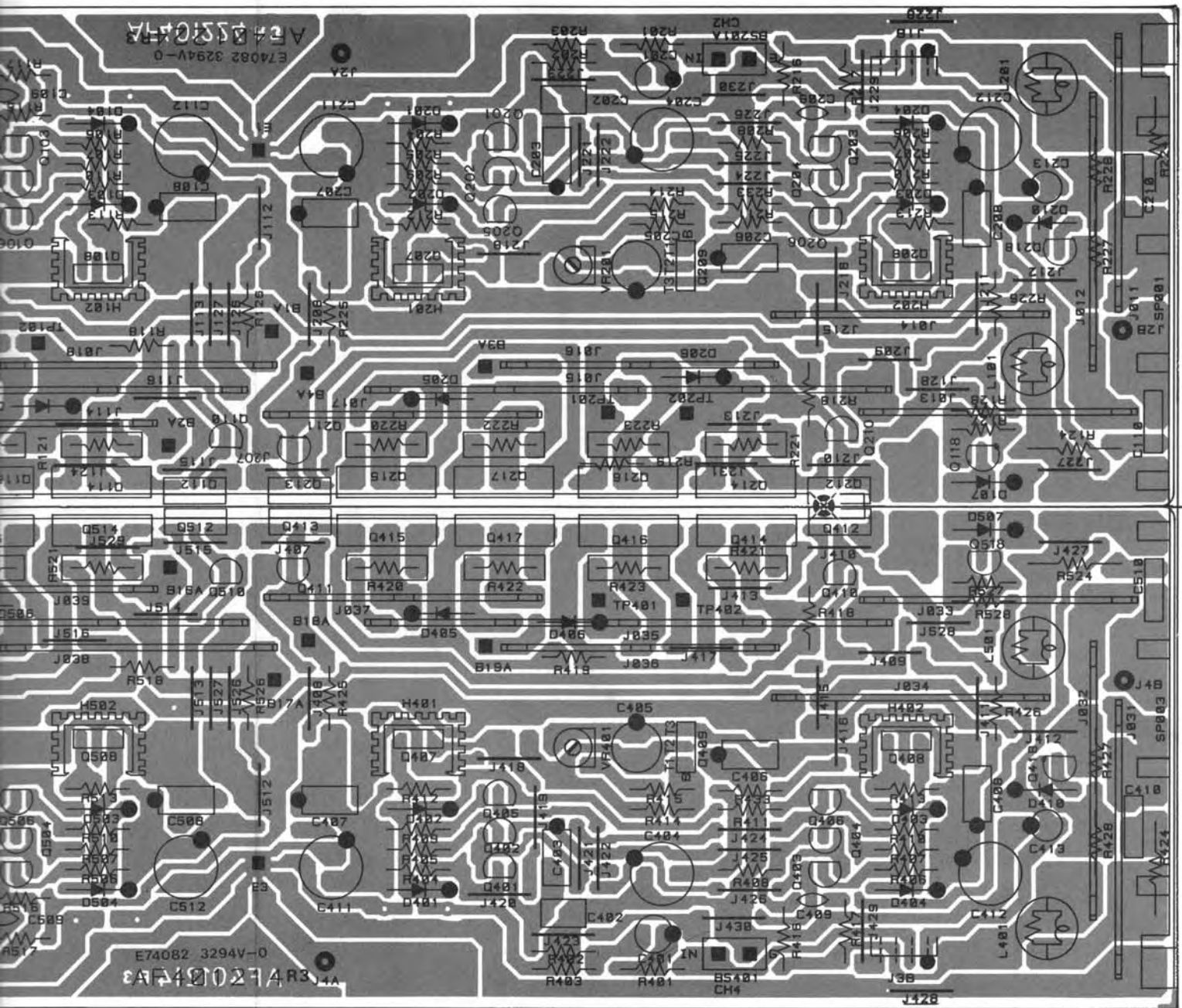
SURROUND AMP RIGHT CHANNEL SECTION



FRONT AND SURROUND AMP PCB RIGHT CHANNEL

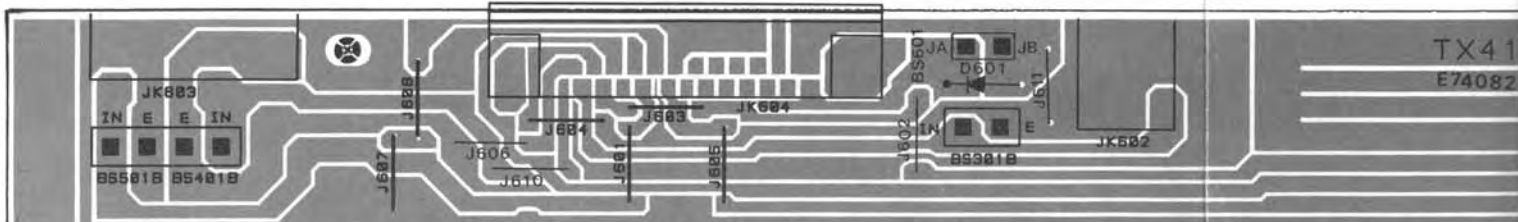


FRONT AND SURROUND AMP PCB LEFT CHANNEL

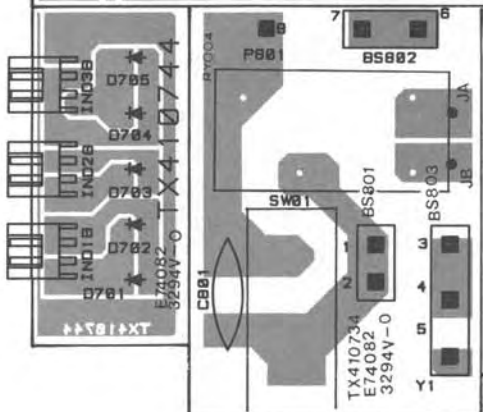


Printed Circuit Boards

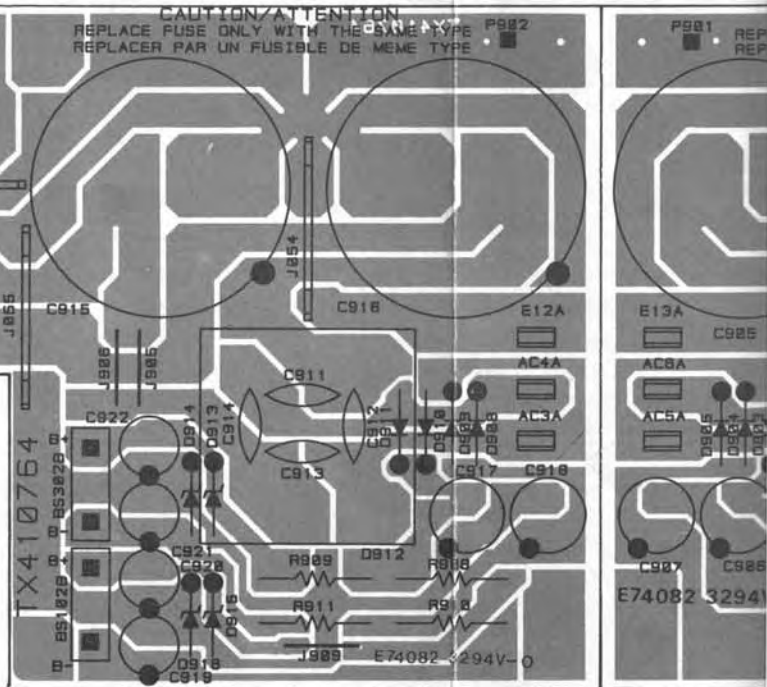
INPUT JACKS PCB



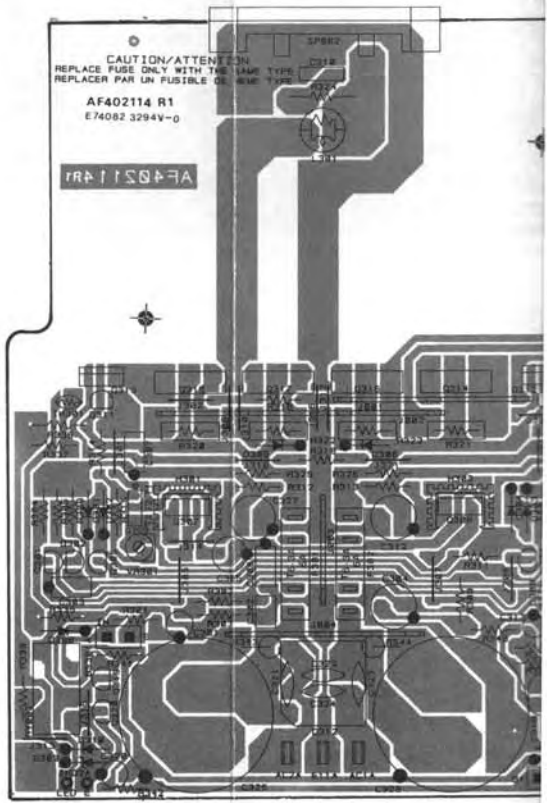
POWER SWITCH PCB



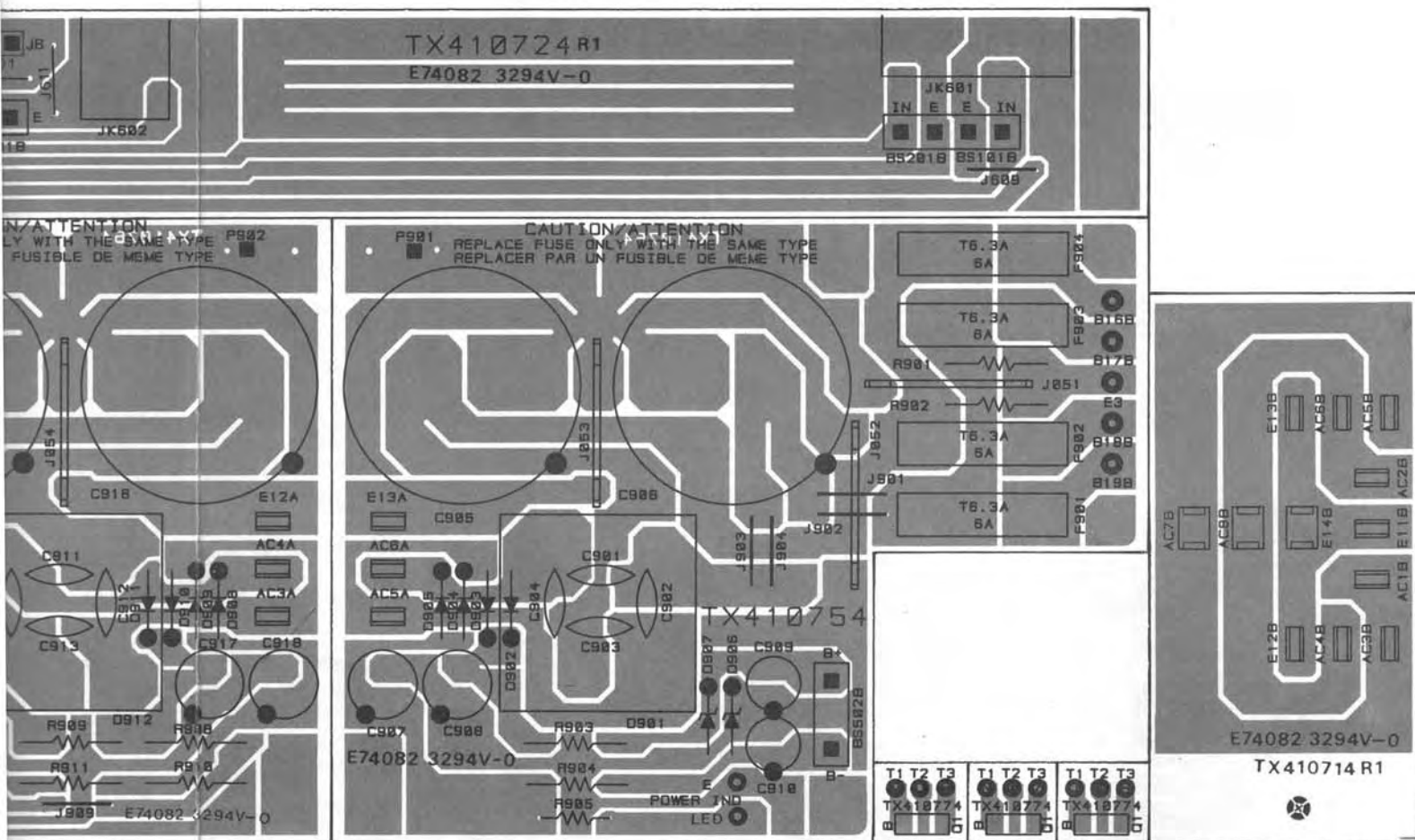
POWER SUPPLY PCB (RIGHT)



CENTER AMP PCB



ACKS PCB



PLY PCB (RIGHT)

POWER SUPPLY PCB (LEFT)

