



Technical Manual

COMPACT DISK PLAYER RCD-951

Table of Contents

Specification.....1
Wiring Diagram2
Parts List.....3,4,5
Case OUTlines.....6
Disassembly Diagram.....7,8
PCB Assembly9,10
Schematic Diagram.....11,12

Specification

Total Harmonic Distortion+Noise	0.0045% @1KHz
Intermodulation Distortion	0.0045% @1KHZ
Frequency Responce (± 0.5 dB)	20-20,000 Hz
Channel Balance	± 0.5 dB
Phase Linearity	± 0.5 degree
ChannelnSeparation	> 100 dB @1KHz
Signal to Noise Ratio	> 105 dB
Dynamic Range	> 100 dB
Digital to Analog Converters	18 Bit, precision DAC
Digital Filter	18 Bit, 8x oversampling
Speed Accuracy, Wow & Flutter	Quartz Crystal to Peak
Output Impedance	100 Ohms
Digital Output	0.5 Volts, Peak to Peak
Load Impedance	75 Ohms
Power requirement	120 volts 60 Hz or 220-240 volts 50 Hz
Power consumption	20 watts
Dimensions, W x H x D	440 x 72 x 316 mm 17 ³ / ₈ x 27 ⁷ / ₈ x 12 ⁷ / ₁₆ inches
Weight (net)	5.4 kg, 11.9 Lb.

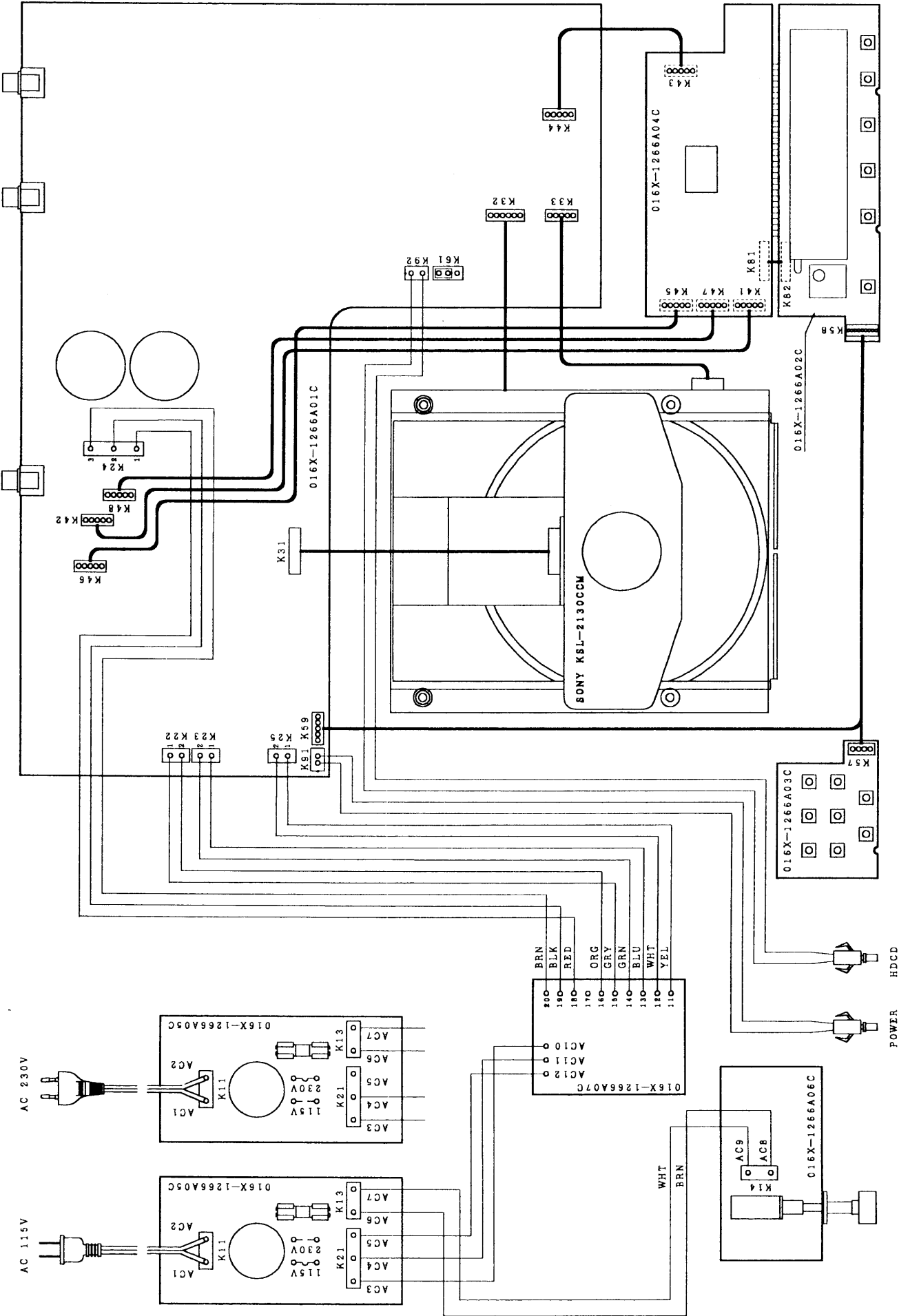
THE ROTEL CO., LTD

BUNZAN-SHINSEN-BLD. 4F 10-10 SHINSEN-CHO, SHIBUYA-KU,
TOKYO 150-0045, JAPAN

Serial. NO.
Beginning

Y-316A-99065C/S-S

Wiring Diagram



Parts List-1

SYMBOL	PARTS NO.	DESCRIPTION
X-1266-01 PCB ASSEMBLY		
C101	041	TUVX1E101MEA1TA CAP. ELEC.25V100UF
C102	043	TC50V103 CAP. CERA.50V0.01UF
C103,104	044	TBF014D0104J CAP. M.P.63V0.1UF
C105,106	041	TUVX1E470MDA1TA CAP. ELEC.25V47UF
C107	041	TUVX1E101MEA1TA CAP. ELEC.25V100UF
C108	044	TBF014D0102J CAP. M.P.63V1000PF
C109	043	TC50VCH150 CAP. CERA.50V15PF
C151	041	TUVX1E101MEA1TA CAP. ELEC.25V100UF
C152	043	TC50V103 CAP. CERA.50V0.01UF
C153,154	044	TBF014D0104J CAP. M.P.63V0.1UF
C155	043	TC50V471 CAP. CERA.50V470PF
C156	044	TBF014D0104J CAP. M.P.63V0.1UF
C157	044	TBF014D0472J CAP. M.P.63V4700PF
C158	043	TC50V471 CAP. CERA.50V470PF
C159	044	TBF014D0152 JCAP. M.P.63V1500PF
C160	044	TBF014D0473J CAP. M.P.63V0.047UF
C161	043	TC50V101 CAP. CERA.50V100PF
C162	044	TBF074D0474J CAP. M.P.63V0.47UF
C163	044	TBF014D0103J CAP. M.P.63V0.01UF
C164	041	TUVX1E101MEA1TA CAP. ELEC.25V100UF
C165	043	TC50V103 CAP. CERA.50V0.01UF
C167,168	044	TBF074D0105J CAP. M.P.63V1UF
C169-171	043	TC50V103 CAP. CERA.50V0.01UF
C201	041	TUVX1E470MDA1TA CAP. ELEC.25V47UF
C202	043	TC50V103 CAP. CERA.50V0.01UF
C203	041	TUVX1E470MDA1TA CAP. ELEC.25V47UF
C204	044	TBF014D0473J CAP. M.P.63V0.047UF
C205	043	TC50VCH470 CAP. CERA.50V47PF
C206	043	TC50V103 CAP. CERA.50V0.01UF
C207	043	TC50VCH470 CAP. CERA.50V47PF
C251	041	TUVX1C102MPA1TD CAP. ELEC.16V1000UF
C252	043	TC50V103 CAP. CERA.50V0.01UF
C253	044	TBF014D0682J CAP. M.P.63V6800PF
C254	043	TC50VCH270 CAP. CERA.50V27PF
C255	044	TBF014D0152J CAP. M.P.63V1500PF
C256	044	TBF074D0334J CAP. M.P.63V0.33UF
C257	044	TBF014D0104J CAP. M.P.63V0.1UF
C258	043	TC50VCH270 CAP. CERA.50V27PF
C509	043	TC50V103 CAP. CERA.50V0.01UF
C511	041	TUVX1E470MDA1TA CAP. ELEC.25V47UF
C513	044	TBF014D0104J CAP. M.P.63V0.1UF
C514	041	UTSS1H010-FB CAP. ELEC.50V1UF
C601	041	TUVX1C102MPA1TD CAP. ELEC.16V1000UF
C602	046	T50V473K CAP. CERA.50V0.047UF
C631	041	20SG22M+F CAP. ELEC.20V22UF
C632	046	T50V473K CAP. CERA.50V0.047UF
C633,634	043	TC50VCH220 CAP. CERA.50V22PF
C651-654	041	25BGF47M CAP. ELEC.25V47UF
C661-664	046	T50V473K CAP. CERA.50V0.047UF
C701-704	041	ECEA1EFS101 CAP. ELEC.25V100UF

SYMBOL	PARTS NO.	DESCRIPTION
C707,708	044	PP400V1000PF CAP.P.P.400V1000PF
C711,712	044	PP630V560PF CAP.P.P.630V560PF
C713,714	044	PP400V1000PF CAP.P.P.400V1000PF
C717,718	041	16BGF100M CAP.ELEC.16V100UF
C721-724	046	T50V473K CAP.CERA.50V0.047UF
C731,732	044	100UPZ103J CAP.P.P.100V0.01UF
C735	041	20SG22M+F CAP.ELEC.20V22UF
C736	046	T50V473K CAP.CERA.50V0.047UF
C741-744	041	25BGF100M CAP.ELEC.25V100UF
C901	043	TC50V103 CAP.CERA.50V0.01UF
C903	043	TC500V103 CAP.CERA.500V0.01UF
C905	043	TC500V103 CAP.CERA.500V0.01UF
C906	041	UTSS1V101-FB CAP.ELEC.35V100UF
C907	041	UVX1C332MHA1AA CAP.ELEC.16V3300UF
C908	041	TUVX1E101MEA1TA CAP.ELEC.25V100UF
C909	043	LTC50V103 CAP.CERA.50V0.01UF
C910,911	041	UTSS1H100-FB CAP.ELEC.50V10UF
C921,922	043	TC500V103 CAP.CERA.500V0.01UF
C923	041	UTSS1H010-FB CAP.ELEC.50V1UF
C924	041	UTSS1E101-FB CAP.ELEC.25V100UF
C931	041	UTSS1H010-FB CAP.ELEC.50V1UF
C932	041	TUVX1E101MEA1TA CAP.ELEC.25V100UF
C941	043	TC50V103 CAP.CERA.50V0.01UF
C951-954	043	TC500V103 CAP.CERA.500V0.01UF
C955,956	041	50USP4700MA40 CAP.ELEC.50V4700UF
C959,960	046	T50V473K CAP.CERA.50V0.047UF
C963	041	ECEA1EF221 CAP.ELEC.25V220UF
C965	041	ECEA1EF221 CAP.ELEC.25V220UF
C967	046	T50V473K CAP.CERA.50V0.047UF
C981,982	041	25BGF100M CAP.ELEC.25V100UF
C987,988	046	T50V473K CAP.CERA.50V0.047UF
D511	034	TRD4.3EST1 ZENER DIODE
D512-514	034	T1N4148-86 DIODE
D731	034	T1N4148-86 DIODEb
D901	034	T1N4003-TB DIODE
D903,904	034	T1N4003-TB DIODE
D905	034	TRD20JST1 ZENER DIODE
D921.922	034	T1N4003-TB DIODE
D923	034	TRD6.2JST1 ZENER DIODE
D951-954	034	T1N4003-TB DIODE
K31	068	16FMN-BTRK FFC 16P CONNECTOR
L101	021	TRL-395 MICRO INDUCTOR 4.7UH
L151,152	021	TRL-395 MICRO INDUCTOR 4.7UH
L201	021	TRL-395 MICRO INDUCTOR 4.7UH
L202	021	TRL-377 DIGITAL OUTPUT COIL
L601	021	TRL-395 MICRO INDUCTOR 4.7UH
L631	021	TRL-395 MICRO INDUCTOR 4.7UH
L651,652	021	TRL-392 MICRO INDUCTOR 33UH
L701	021	TRL-392 MICRO INDUCTOR 33UH
M5	017	4TR-2792#3 SUB HEAT SINKER

Parts List-2

SYMBOL	PARTS NO.	DESCRIPTION
M12	017 C-4401A01	SUB HEAT SINKER
R105,106	054 TMF1503	R.METAL 150K
R107	054 TMF4702	R.METAL 47K
R108,109	054 TMF2202	R.METAL 22K
R110	054 TMF1002	R.METAL 10K
R111	054 TMF0100	R.METAL 10R
R112	054 TMF0120	R.METAL 12R
R151	054 TMF1001	R.METAL 1K
R152	054 TMF1000	R.METAL 100R
R153	054 TMF1003	R.METAL 100K
R154	054 TMF1502	R.METAL 15K
R155	054 TMF1003	R.METAL 100K
R156	054 TMF3302	R.METAL 33K
R157	054 TMF1502	R.METAL 15K
R158	054 TMF1002	R.METAL10K
R159,160	054 TMF3301	R.METAL 3.3K
R161	054 TMK2100RFECZ	R.METAL 1% 100R
R162	054 TMF1004	R.METAL 1M
R163	054 TMF1003	R.METAL 100K
R164	054 TMF1002	R.METAL 10K
R165-167	054 TMK2100RFECZ	R.METAL 1% 100R
R168,169	054 TMF1000	R.METAL 100R
R201	054 TMF3300	R.METAL 330R
R202	054 TMK2027RFECZ	R.METAL 1% 27R
R203	054 TMK2075RFECZ	R.METAL 1% 75R
R251	054 TMF3903	R.METAL 390K
R252	054 TMF1503	R.METAL 150K
R254	054 TMF1503	R.META L150K
R255	054 TMF04R7	R.METAL 4.7R
R256	054 1WS2.2JF	R.METAL 1W 2.2R
R511	054 1WS4.7JF	R.METAL 1W 4.7R
R512	053 CR14-472J-A	R.CARBON 4.7K
R513	053 CR14-562J-A	R.CARBON 5.6K
R514	053 CR14-224J-A	R.CARBON 220K
R601	053 CR14-561J-A	R.CARBON 560R
R631	054 TMK2001MFECZ	R.METAL 1% 1M
R633,634	054 TMK2018RFECZ	R.METAL 1% 18R
R635	054 TMK2039RFECZ	R.METAL 1% 39R
R651-654	054 TMK2100RFECZ	R.METAL 1% 100R
R701,702	054 TMF1/4-1501F	R.MRS25 1.5K
R703,704	054 TMF1/4-4700F	R.MRS25 470R
R707,708	054 TMF1/4-1202F	R.MRS25 12K
R711,712	054 TMF1/4-1501F	R.MRS25 1.5K
R713,714	054 TMF1/4-1201F	R.MRS25 1.2K
R715,716	054 TMF1/4-2701F	R.MRS252.7K
R717,718	054 TMF1/4-5603F	R.MRS25 560K
R719,720	054 TMF1/4-1000F	R.MRS25 100R
R731	053 CR14-561J-A	R.CARBON 560R
R732	053 CR14-223J-A	R.CARBON 22K
R901	054 TMF1002	R.METAL 10K

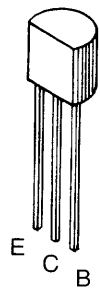
SYMBOL	PARTS NO.	DESCRIPTION
R902	053 CR14-331J-A	R.CARBON 330R
R921	053 CR14-223J-A	R.CARBON 22K
R922,923	053 CR14-103J-A	R.CARBON 10K
R924	053 CR14-563J-A	R.CARBON 56K
R925	053 CR14-104J-A	R.CARBON 100K
R926	053 CR14-563J-A	R.CARBON 56K
S731	063 EG2-24NU	RELAY
T101	032 T2SB764AE-EF	TRANSISTOR
T731	032 T2SA1016KAA-FG	TRANSISTOR
T901	032 T2SA608KAA-FG	TRANSISTOR
T921-923	032 T2SC536KAA-FG	TRANSISTOR
U101	031 CXA1821M	IC
U151	031 CXD2545Q	IC
U201	031 TC74HCU04AP	IC
U251	031 BA6392FP	IC
U511	031 LB1641	IC
U601	031 PMD100	IC
U631	031 TC74HCU04AP	IC
U651	031 PCM69AP	IC
U701,702	031 OPA2604AP	IC
U901	031 NJM7805FA	IC
U931	031 NJM7805FA	IC
U961	031 NJM7805FA	IC
U981	031 NJM7815FA	IC
U982	031 NJM7915FA	IC
X631	023 HC49U16.9344	CRYSTAL OSC.
	019 TO-126	INSULATION SHEET(S)
	019 TO-220	INSULATION SHEET(L)
X-1266-02 PCB ASSEMBLY		
C352	041 UTSS1A101-FB	CAP. ELEC. 10V100UF
D351	034 TRD6.2JST1	ZENER DIODE
O351	035 6BT209GK	FL TUBE
R351	054 TMF5601	R.METAL 5.6K
R352-354	054 TMF1801	R.METAL 1.8K
S351-356	061 4TR-2343	KEY BOARD SWITCH
U351	031 SBX1910-52	IC
X-1266-03 PCB ASSEMBLY		
R301	054 TMF1002	R.METAL 10K
R302	054 TMF2702	R.METAL 27K
R303	054 TMF1002	R.METAL 10K
R304	054 TMF2702	R.METAL 27K
R305	054 TMF1801	R.METAL 1.8K
R306	054 TMF2702	R.METAL 27K
R307	054 TMF3901	R.METAL3.9K
S301-308	061 4TR-2343	KEY BOARD SWITCH

Parts List-3

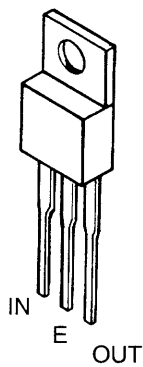
SYMBOL	PARTS NO.	DESCRIPTION
X-1266-04 PCB ASSEMBLY		
C401	043 TC50V103	CAP.CERA.50V0.01UF
C402	041 UTSS1E101-FB	CAP.ELEC.25V100UF
C403	043 TC50V103	CAP.CERA.50V0.01UF
C404	041 UTSS1A101-FB	CAP.ELEC.10V100UF
C405	041 UTSS1H2R2-FB	CAP.ELEC.50V2.2UF
C406,407	043 TC50VCH330	CAP.CERA.50V33PF
C408	043 TC50V103	CAP.CERA.50V0.01UF
D401,402	034 T1N4148-86	DIODE
K81	068 MB9P-90S	CONNECTOR WAFER
K83	068MB2P-90S	CONNECTOR WAFER
L401	021 TRL-395	MICRO INDUCTOR 4.7UH
R401,402	053 CR16-104J-A	R.CARBON 100K
R403-417	053 CR16-103J-A	R.CARBON 10K
R423	054 SE8102J	THICK FILM RS NETWORK
R424	054 SE8104J	THICK FILM RS NETWORK
R425	054 LTMF4702	R.METAL 47K
U401	031 CXP82440A-166Q	IC
X401	023 CSA10.0MHZ	CERAMIC RESONATOR
X-1266-05 PCB ASSEMBLY		
F001	036 5ST500	MIN IFUSE 250VT500mA
L001	021 TRL-356	LINE CHOKE COIL
	069 C-3417A	FUSE CLIP

SYMBOL	PARTS NO.	DESCRIPTION
X-1266-06 PCB ASSEMBLY		
C001	044 DE1307E472M	SPARK KILLER
S001	061 C-3600B-T	POWER SWITCH
OTHERS		
011	FP-485	FRONT PANEL
012	4TQF-15	POWER BUTTON
012	RZ3-10A00	TACT BUTTON 8KEY
012	RZ3-11A00	TACT BUTTON 6KEY
014	C-4550A03	UPPER COVER
014	FP-488	PLASTIC DOOR
014	4TR-2797#1	ORNAMENT SIDE BOARD
014	RZ3-08A01	BOTTOM BOARD
019	4TSH-19#2	PLASTIC FOOT
022	T-1060N01	POWER TRANSFORMER
072	C-930-T	PIN PLUG CORD
072	C-4572A01	AC CORD for UK
072	C-3763	AC CORD for AUSTRALIA
072	4TR-1037	AC CORD for CEE
072	4TR-670#4	AC CORD for STD
081	TZ-167	STYROL SIDE MOULDIND
081	RZ4-12A00	INSIDE CARTON
092	KSL-2130CCM	CD MECHANISM
092	RR-D91	REMOTE UNIT

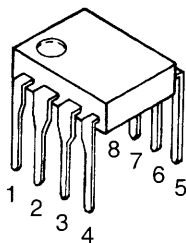
Case Outlines



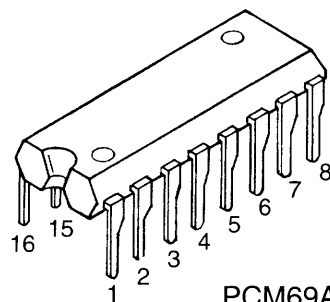
2SC536K 2SA1016K
2SA608K 2SC2362K
2SB764



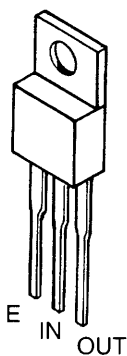
NJM7805FA
NJM7815FA



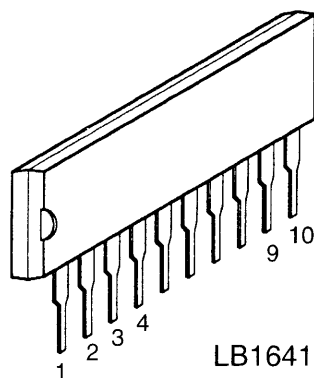
OPA2604P



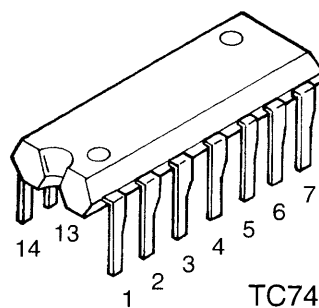
PCM69AP



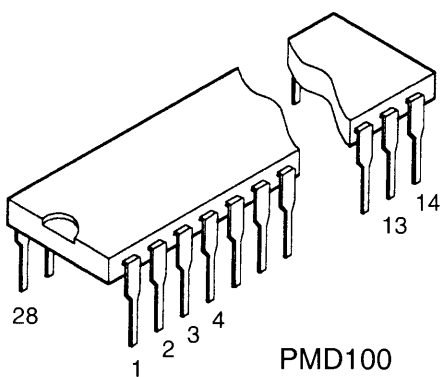
NJM7915FA



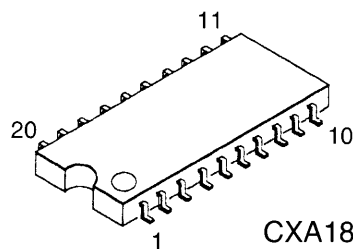
LB1641



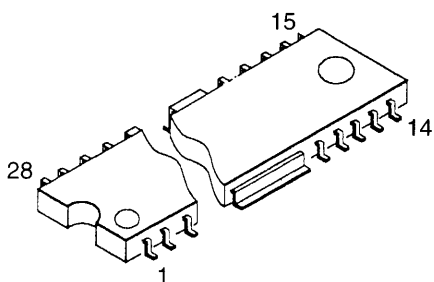
TC74HCU04AP



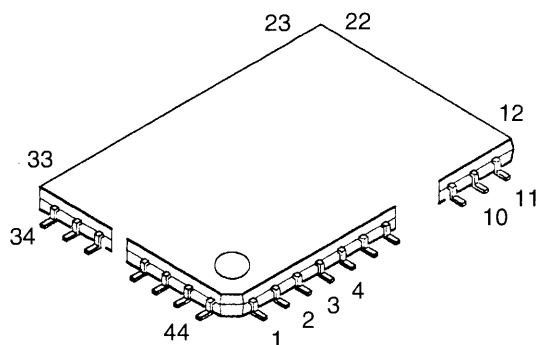
PMD100



CXA1821M

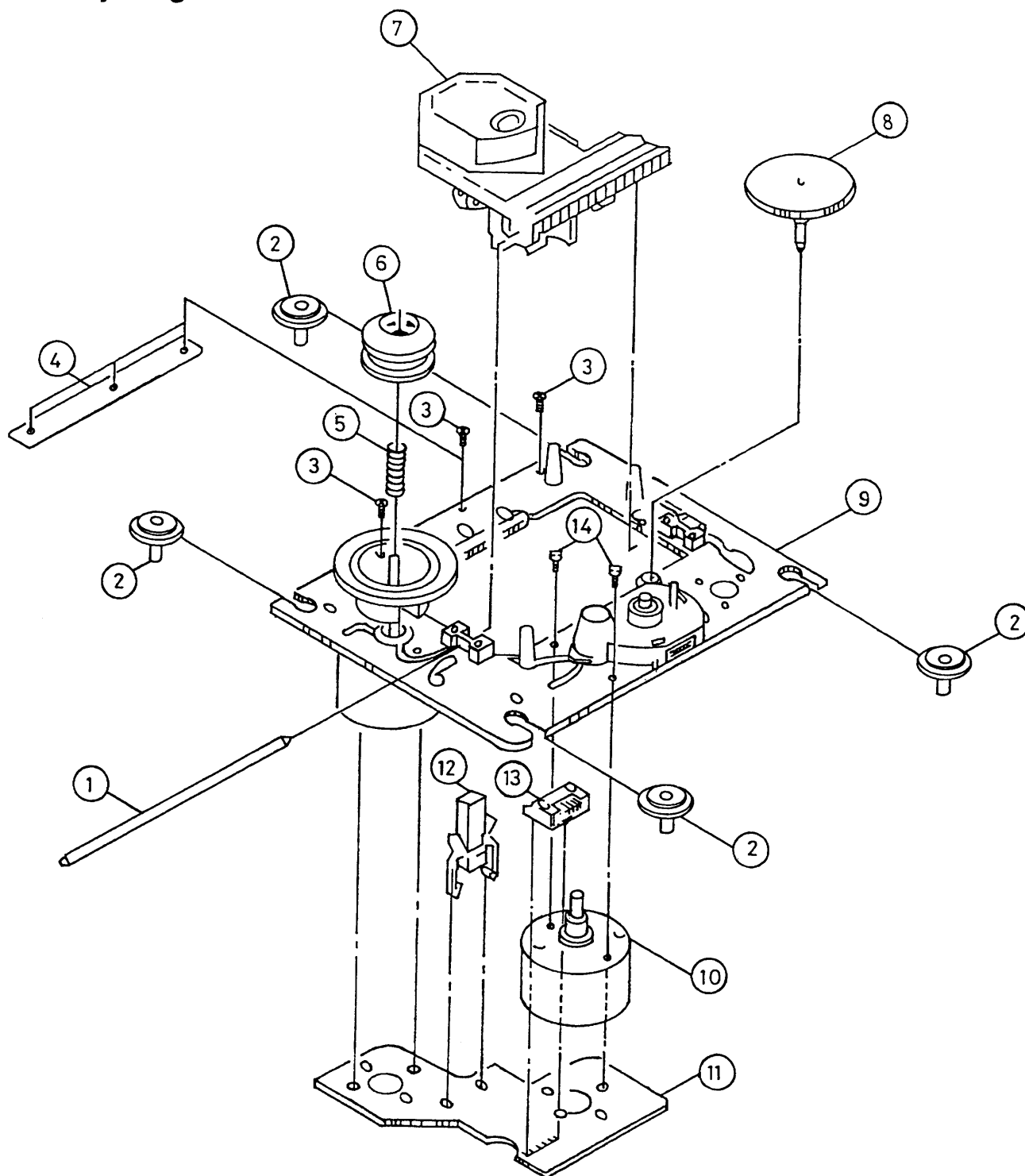


BA6392FP



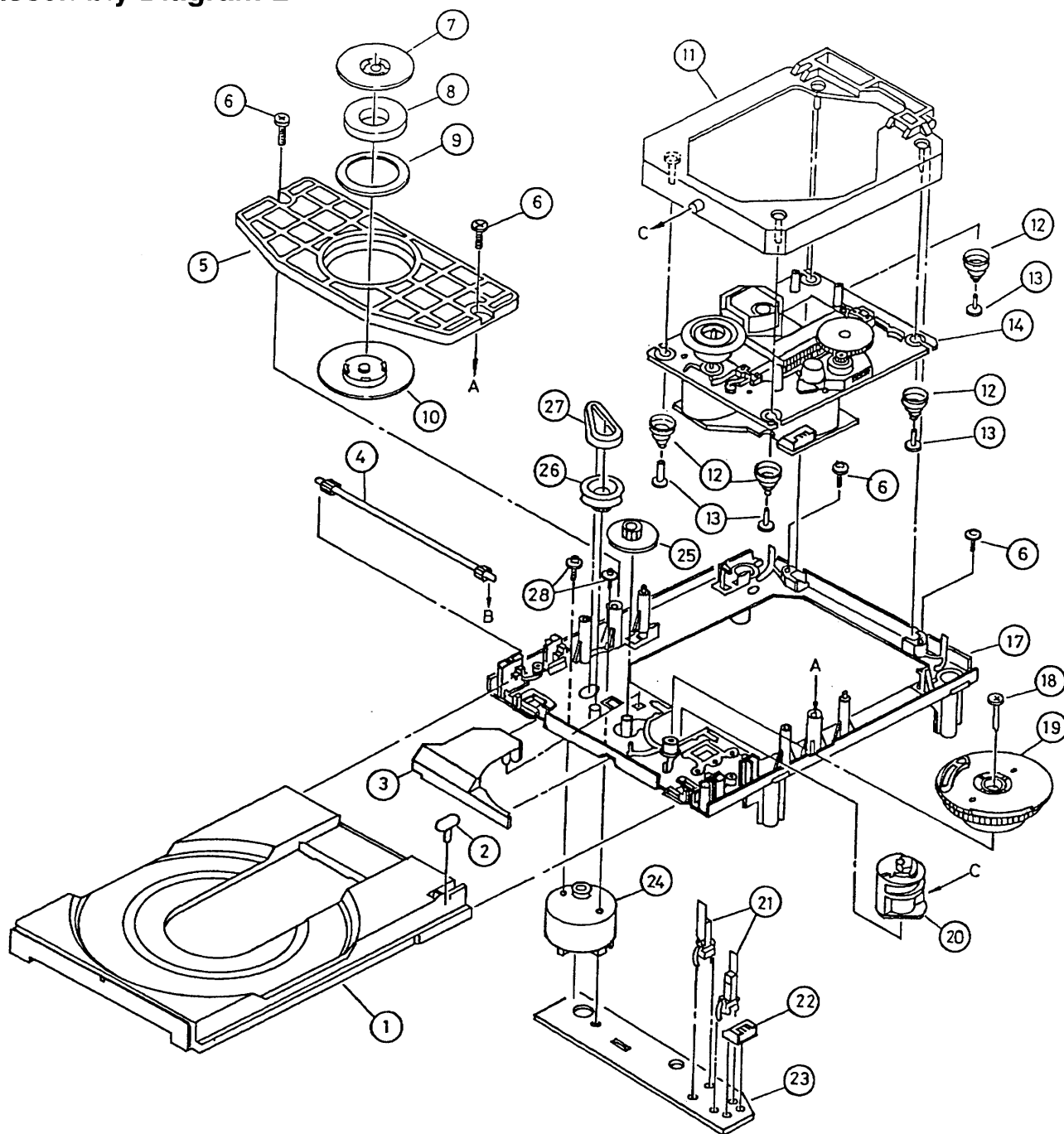
CXD2545Q
CXP82440A-166Q

Disassembly Diagram-1



ITEM	DESCRIPTION	SPEC. NO.
1	CHAFT(S). SLED	2-625-464-(01)
2	INSULATOR(S)	2-625-538-(01)
3	SCREW(2X5). TAPPING(S)	2-641-386-(01)
4	REINFORCEMENT(S)	2-625-625-(01)
5	SPRING(S). COMPRESSION	2-626-465-(01)
6	RING(LO)(S). CENTER	2-626-477-(01)
7	PICK UP KSS 213C	
8	GEAR(A)(S)	2-626-462-(01)
9	CHASSIS ASS'Y(MB). TT	X-2625-133-(2)
10	GEARASS'Y(MB). MOTOR	X-2625-132-(1)
11	PC BOARD. MOTOR(6P)(S)	1-639-678-(13)
12	SWITCH LEAF	1-572-085-(12)
13	PIN. CONNECTOR 6P	1-564-722-(11)
14	SCREW+P 2X3	7-621-255-(15)

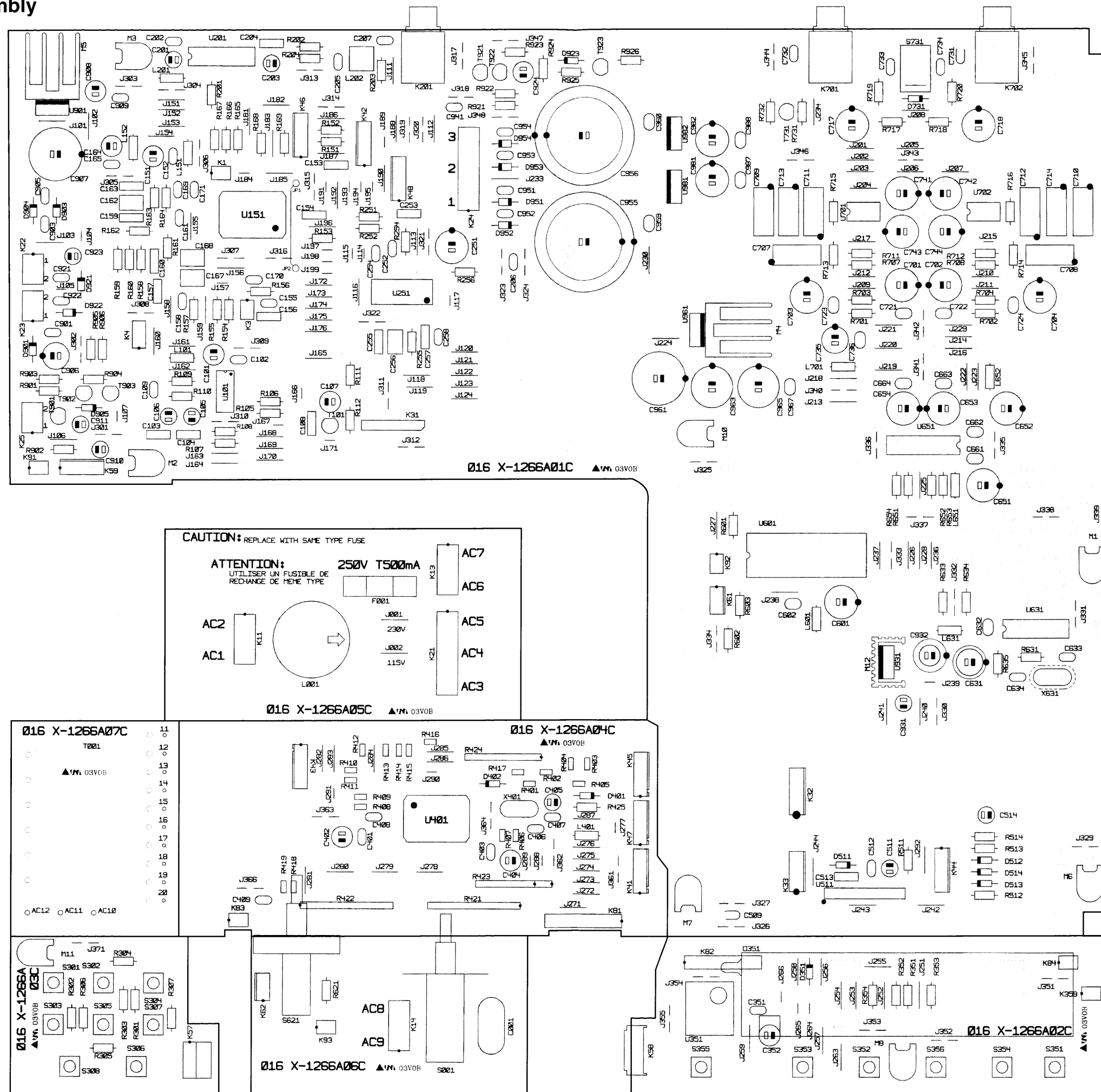
Disassembly Diagram-2



ITEM	DESCRIPTION	SPEC. NO.
1	TRAY(S)	2-625-550-(03)
2		
3	COVER(S). GEAR	2-625-544-(01)
4	GEAR(S). TRAY	2-625-535-(01)
5	PLATE(S). CHUCKING	2-626-546-(01)
6	SCREW+P TP WH 2.D6X7	2-625-537-(01)
7	YOKE(S). CHUCKING	2-625-537-(01)
8	MAGNET	1-452-483-(21)
9	DAMPER(S)	2-625-541-(02)
10	PULLEY(G). CHUCKING	2-625-548-(02)
11	CHASSIS ASS'Y(G). SUB	X-2625-227-(2)
12	SPRING(S)	2-825-539-(01)
13	WASHER BASED SCREW	2-625-730-(01)
14	DRIVE UNIT KSM-213CCM	

ITEM	DESCRIPTION	SPEC. NO.
17	CHASSIS(S). OUTSERT MAIN	2-625-552-(06)
18	SCREW+P TP WH 2.D6X16	3-319-501-(51)
19	GEAR(S). DRIVE	2-625-547-(03)
20	CAM(S). CONTROL	2-625-545-(04)
21	SWITCH. LEAF	1-572-086-(11)
22	PIN. CONNECTOR 5P	1-564-721-(11)
23	PC BOARD LOADING	1-640-523-(12)
24	MOTOR ASS'Y. LOADING	X-2625-117-(1)
25	GEAR(S). MIDWAY	2-625-534-(02)
26	PULLEY(S). LOADING	2-625-536-(02)
27	BELT. LM	3-653-387-(01)
28	SCREW+P 2.D6X2.D5	2-625-279-(01)

PCB Assembly



ROTEL 07899 016X-1266A01C-07C L1CM 98/8/18

Schematic Diagram

