

**ROKSAN**

# **ROK-SI**

## **Stereo Power Amplifier**

### **Service Manual**

# VOLTAGE CONVERSION FOR ROK-S1 STEREO POWER AMPLIFIER

There are two types of transformer fitted to the ROK-S1 amplifier.  
One has a second tap for voltage conversion. (Type 25510)

The other is dedicated to each voltage, i.e. cannot be changed. If the amplifier is fitted with this type then a voltage change means replacing the transformer. If this is the case contact ROKSAN directly for a replacement unit.

The wiring for the transformer with the extra tap is:

Primary -	BLUE	- 0V	OR	1	-0V
	BROWN	- 240V		3	-240V
	WHITE	- 110V		2	-110V
	ORANGE	- 230V			
Secondary -	RED	- 34V		4	-34V
	GREEN	- 0V		5	-0V
	RED	- 34V		6	-34V

The following procedure should be followed to open the amplifier casework.

1. Using a 5mm allen key remove the front and back bolts holding the top extruded corner pieces.
2. Slightly undo the bolts holding the bottom of the front panel. They should not be removed.
3. Lift the top corner pieces and side panels away leaving the top panel in place.
4. Undo the M2.5 allen bolt holding the top panel to the back panel. The top panel is now free to remove.

NOTE: The top and side panels fit in to grooves in the front and back panels. Therefore they must be clear of these grooves before they become free.

The internal components of the amplifier will now be accessible.

To change the voltage from 240V to 110V, the primary BROWN wire should be disconnected from the fuse holder terminal and insulated correctly using heatshrink.

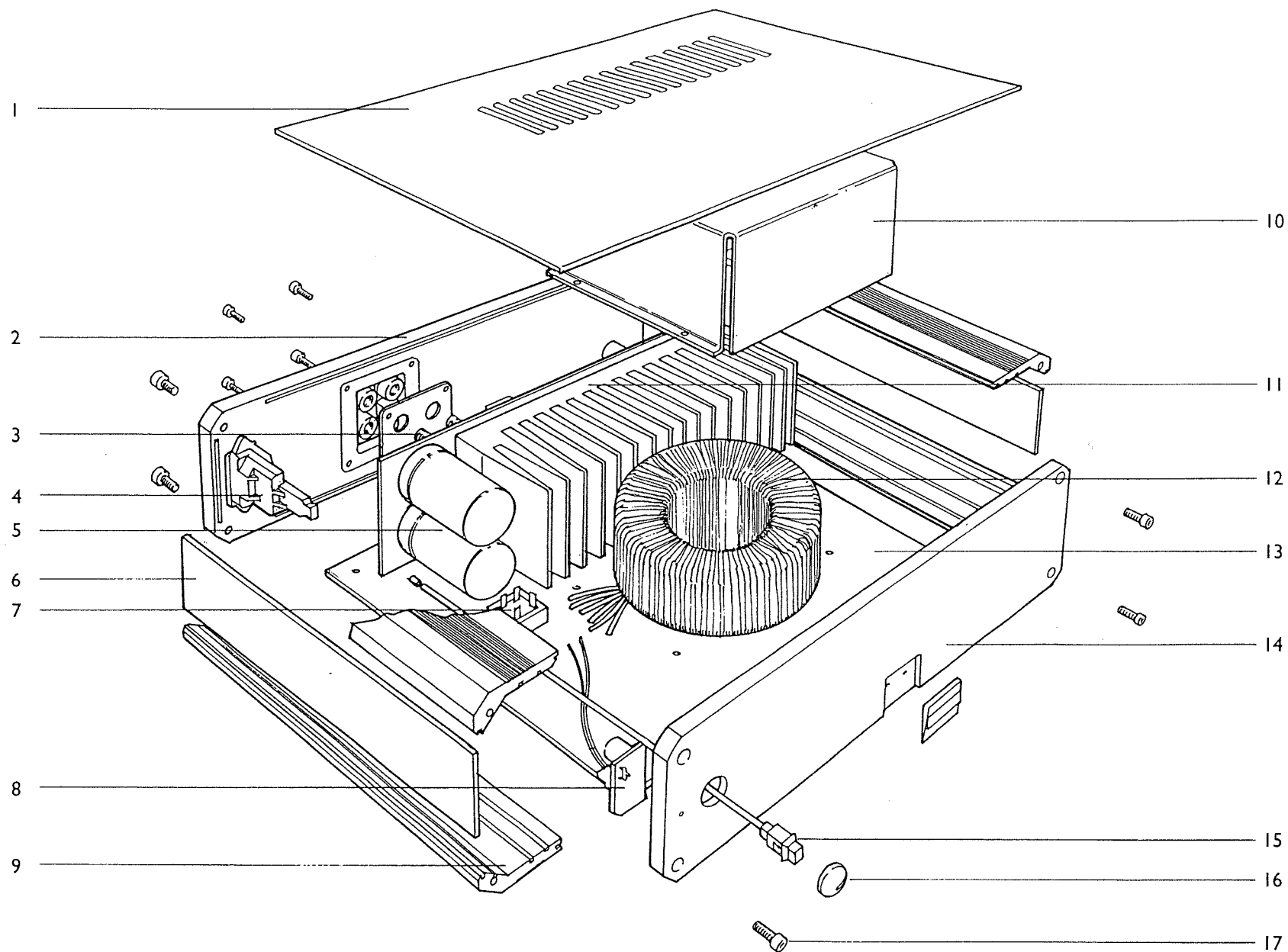
The WHITE wire should be connected in its place and insulated.

To reassemble make sure that the top and side panels are fitted in to their respective grooves in the front and back panels before attempting to fit and tighten the corner pieces. Then carry out reverse of above instructions.

# **ROK-S1**

## **EXPLODED VIEW**

1. TOP PANEL
2. BACK PANEL
3. SPEAKER OUTPUT TERMINALS
4. MAINS INPUT AND SWITCH
5. ROKSAN CUSTOM CAPACITORS
6. SIDE PANEL
7. BRIDGE RECTIFIER
8. FRONT PANEL L.E.D. PCB
9. EXTRUDED CORNER PIECES
10. TRANSFORMER SHIELD
11. HEATSINK
12. MAINS TRANSFORMER
13. BOTTOM PANEL
14. FRONT PANEL
15. POWER BUTTON
16. POWER BUTTON CAP
17. M6 x 10 SHC BOLTS



**ROKSAN**

ROK-MI MONO POWER AMPLIFIER

Copyright 1993 © Roksan Digital Ltd

## ROK-SI Technical Data

Power output into:                      8 Ohms      50W  
   4 Ohms      100W  
(20 Hz to 20 kHz at no more than 0.1% THD)

Class of operation	A/B
--------------------	-----

Signal to noise ratio (A weighted) > 110 dB

THD & IM distortion < 0.05%  
(1kHz, 50W, 8 Ohms)

Slew rate  
(input filter removed) >60 Volts per microsecond

Peak current  $\pm 12$  Amps

Bandwidth ( $\pm 3$ dB points) 1.2 Hz - 125 kHz

Frequency response 20 Hz - 20kHz  $\pm$  0.1 dB

**Input sensitivity** 600 mV (1kHz, 50W 8Ohms)

Input impedance                      68 kOhms (non-inverting)

Output impedance < 0.05 Ohms

Power consumption	180W
-------------------	------

**Voltage** 100/110 - 60Hz, 220/240 - 50Hz

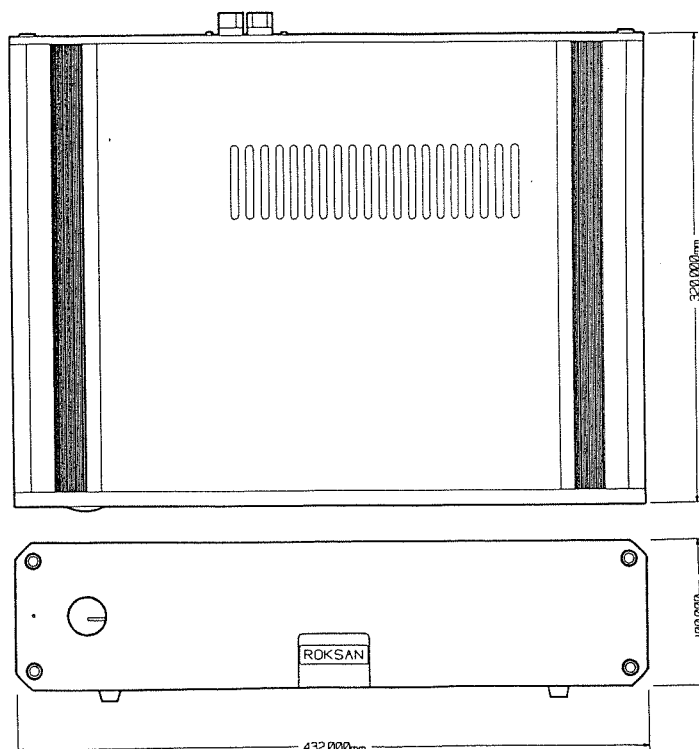
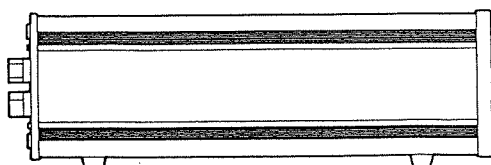
**Weight** 16 kg (35lbs)

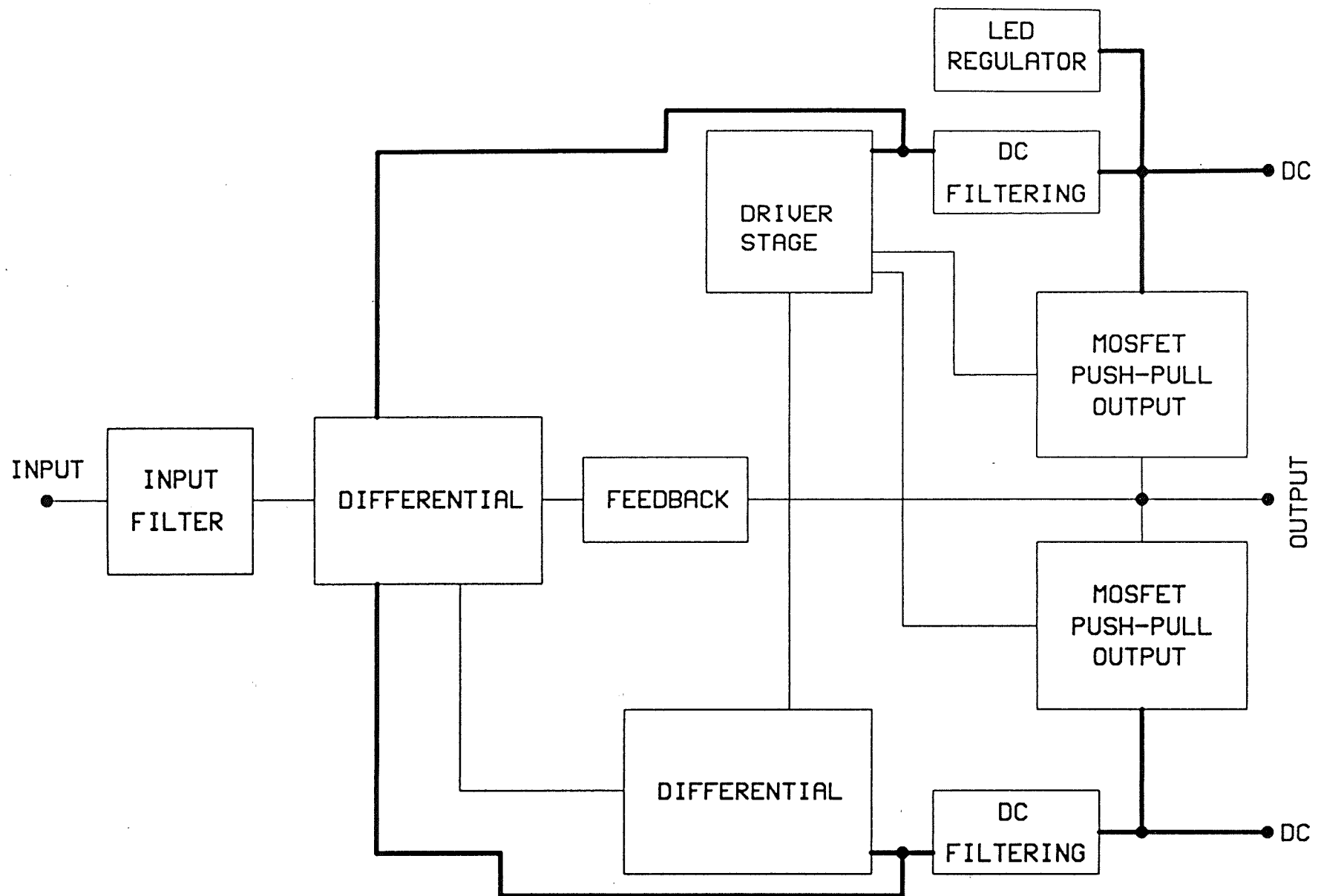
**Dimensions** 432 x 335 x 110mm  
(17 x 13 x 4.3 inches)

Finish Silver or Black

ROKSAN reserves the right to alter specifications without prior notice. E&OE.

Roksan Digital Ltd  
Stockley Close, West Drayton, Middlesex. UB7 9BB U.K.  
Tel: +44 (0)895 436384. Fax: +44 (0)895 436385  
Printed in the UK 2/93

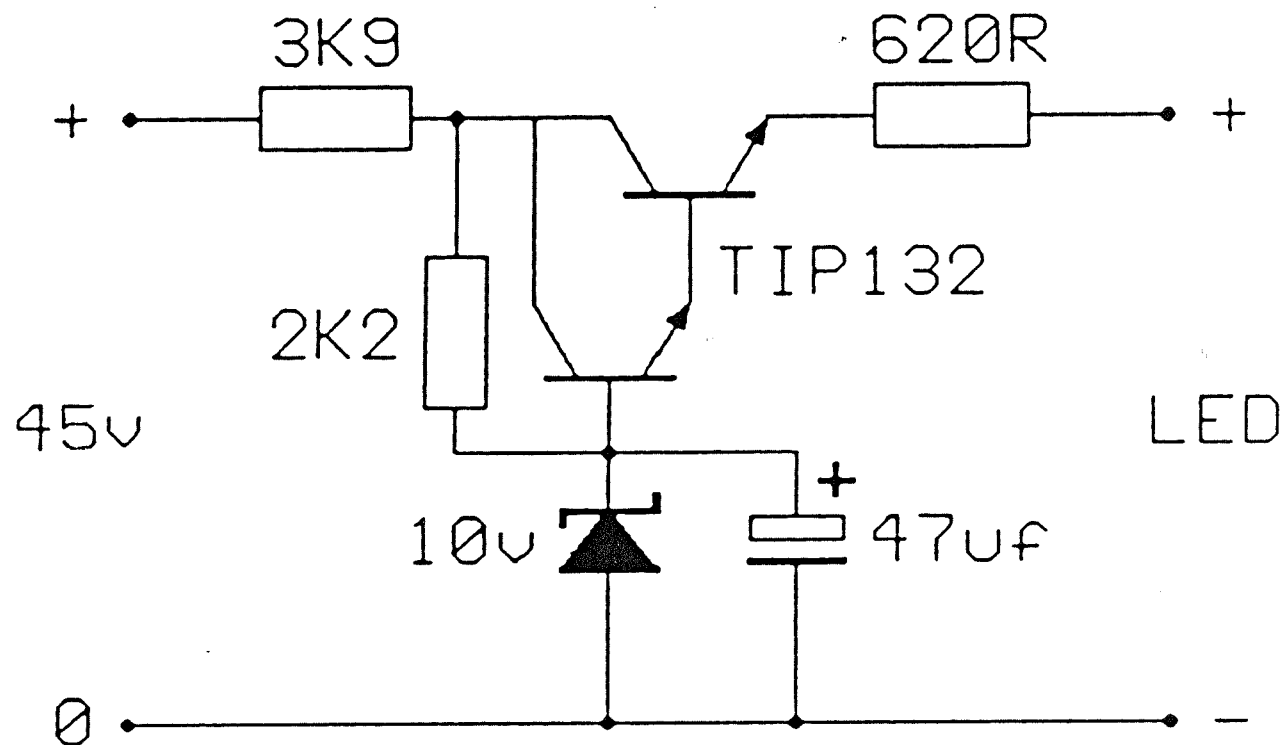




**ROKSAN**

ROK-SI POWER AMPLIFIER BLOCK DIAGRAM

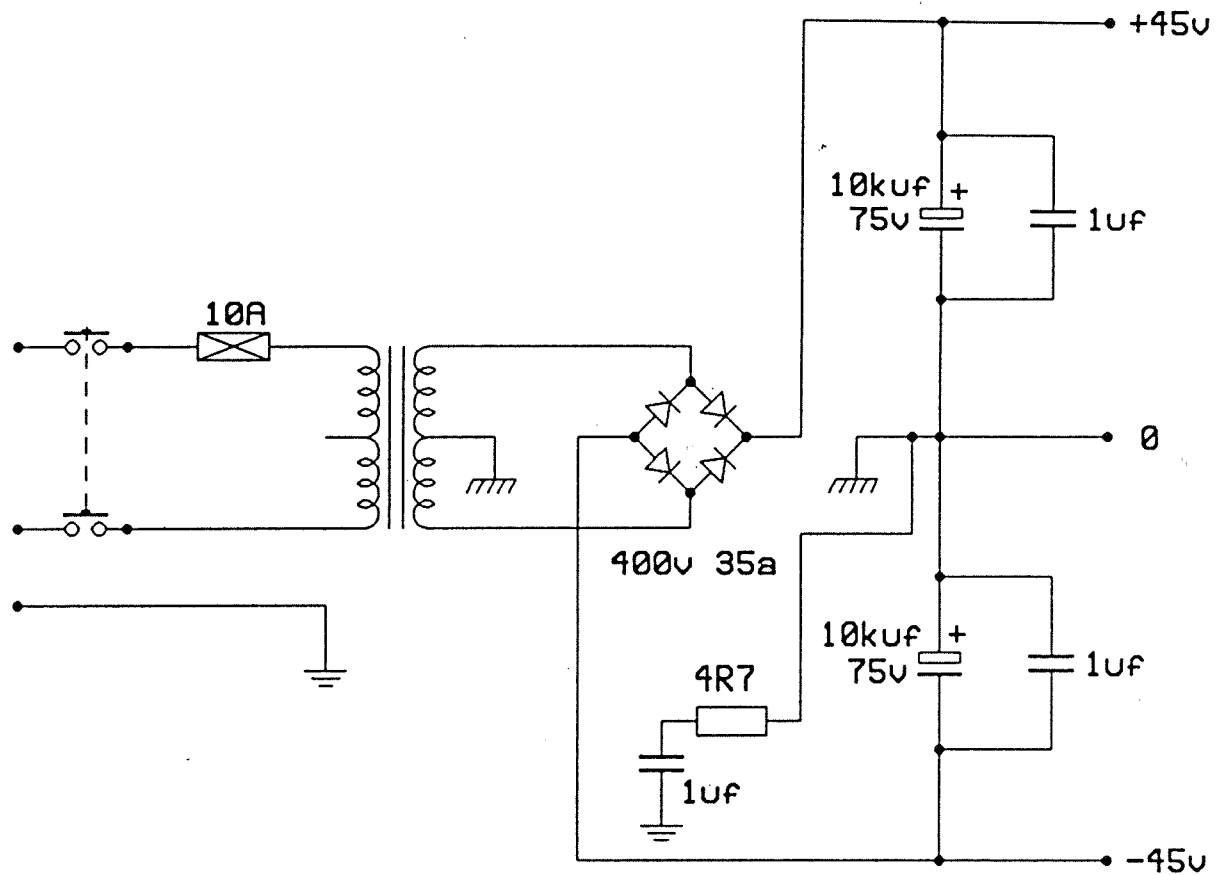
Copyright 1993 © Roksan Digital Ltd



**ROKSAN**

ROK-SI LED POWER SUPPLY CIRCUIT DIAGRAM

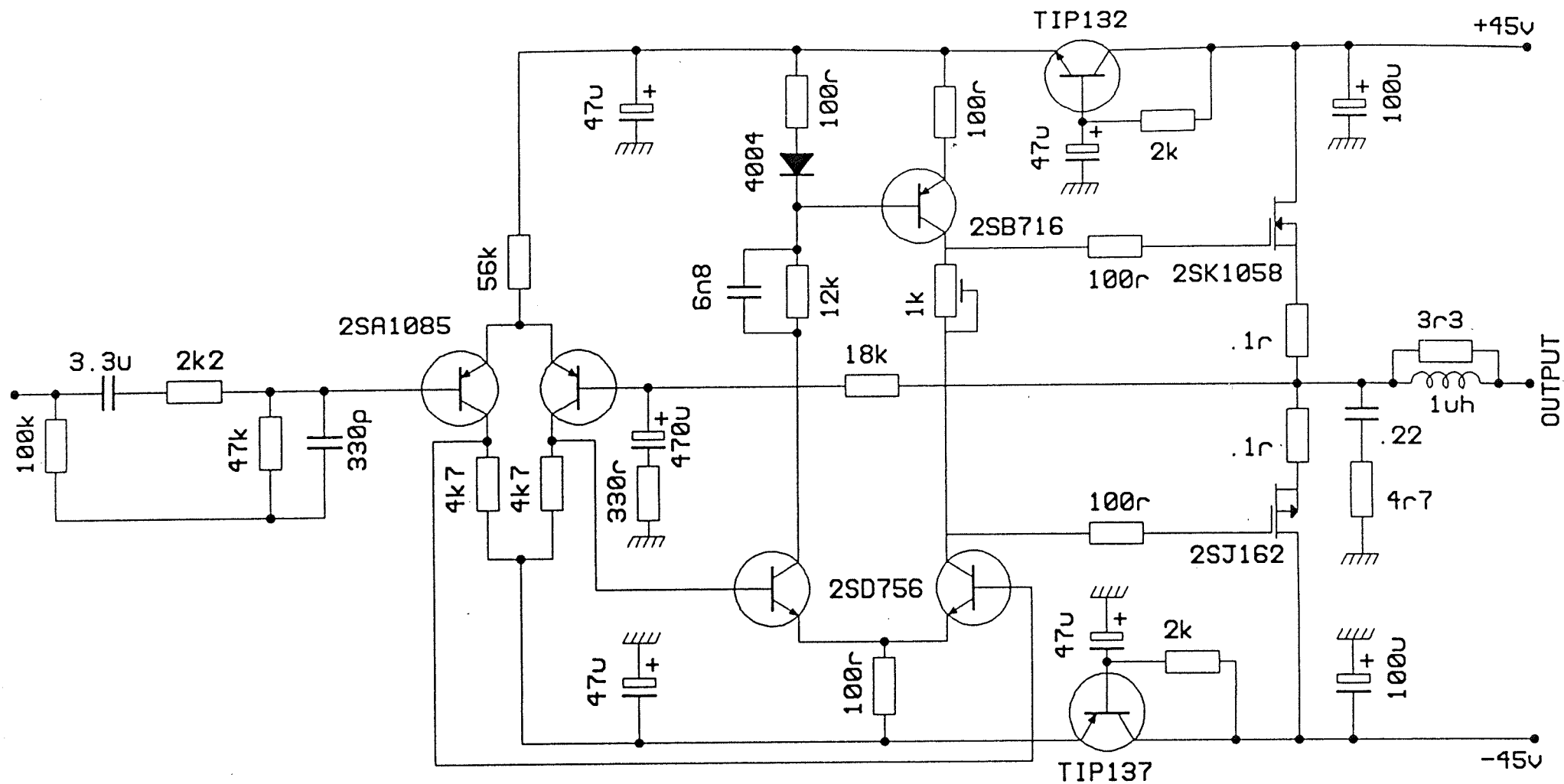
Copyright 1993 © Roksan Digital Ltd



**ROKSAN**

ROK-SI POWER SUPPLY CIRCUIT DIAGRAM

Copyright 1993 © Roksan Digital Ltd



**ROKSAN**

ROK-SI MAIN CIRCUIT DIAGRAM

Copyright 1993 © Roksan Digital Ltd

