

**SCHEMATIC DIAGRAMS  
MOD.**

---

# **RODEO 37**

---

**ELECTRONIC ORGAN**

**MANUFACTURED BY:**

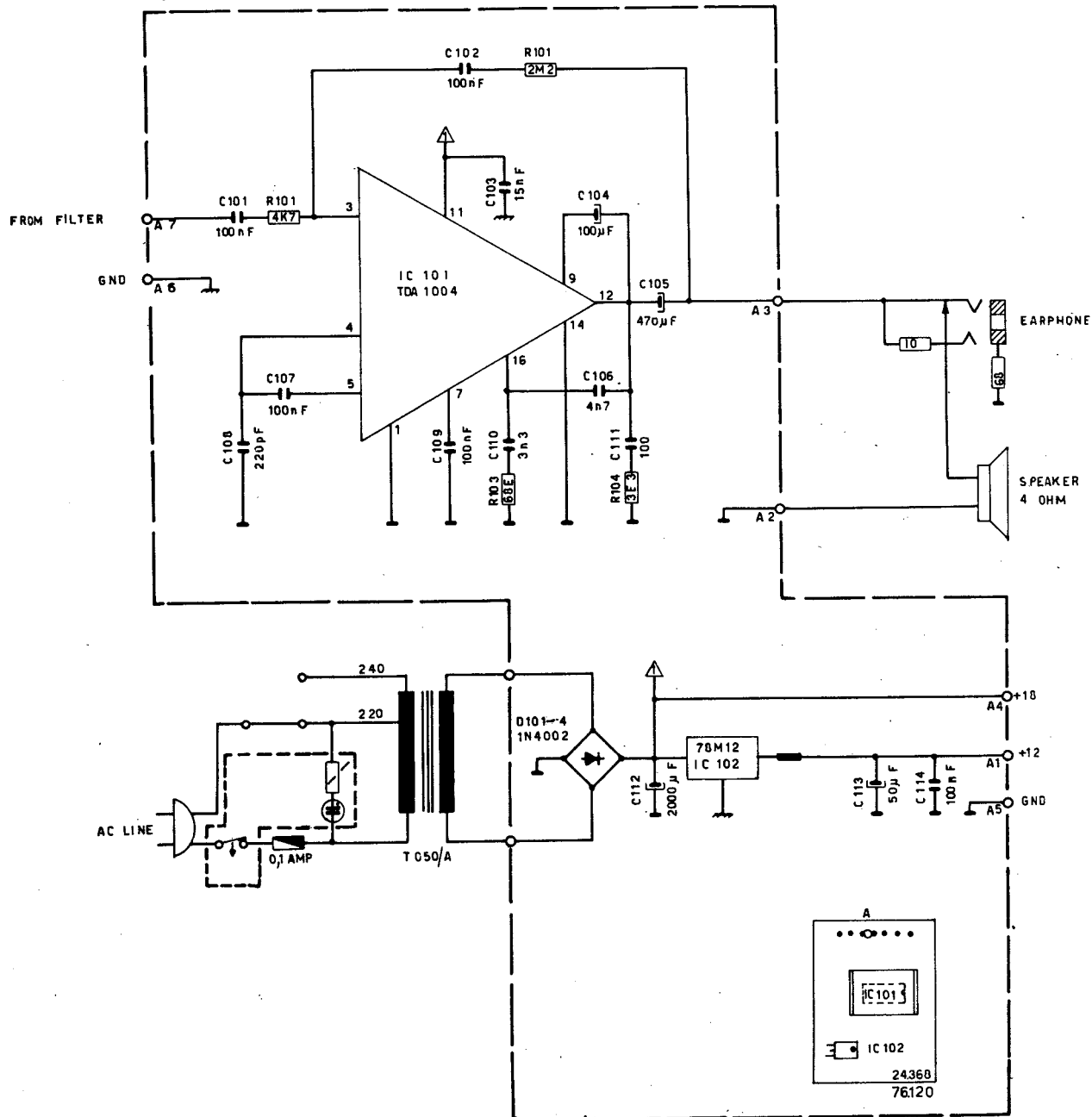
---

**G.E.M.** s.p.a. - ELECTRONIC MUSICAL INSTRUMENTS

---

**MONDAINO · FO · ITALY**

# POWER AMPLIFIER 76.120



- NOTES :
- 1) ALL RESISTORS 1/4 WATT UNLESS OTHERWISE SPECIFIED.
  - 2) ALL VOLTAGES MEASURED WITH RESPECT GND, WITHOUT SIGNAL.

REV.	SUBJECT	DATE	CHKD
ISSUED	DATE	BY	USED ON:
DRAWN	73-1277	Y. G. G.	
CHKD	25-1-78	Y. G. G.	
APPV	25-1-78	Y. G. G.	
N° S0 -1248			
REPLACED BY			
REPLACING			
SCHEMATIC DIAGRAM: POWER AMPLIFIER AND VOLTAGE REGULATOR			

**DDR**  
NONBAINO (FO)

FROM PWR AMP +12 A5

POWER GND A3

VIBRATO ON-OFF

VIBRATO CTR A4

C101 100  $\mu$ F

C102 100 nF

C103 100 nF

C104 100 nF

C105 100 nF

C106 100 nF

C107 220 nF

C108 100 nF

C109 100 nF

C110 220 nF

C111 1 nF

C112 1 nF

C113 220 pF

C114 6 nF

R101 10K

R102 820K

R103 1M

R104 100K

R105 10K

R106 100K

R107 10K

R109 220K

TR101 BC209

TR102 BC209

1

2

3

4

5

6

7

8

9

10

11

12

13

14

15

E

C

B

A

G

F

E

D

C

C<sup>\*</sup>

A<sup>\*</sup>

D<sup>\*</sup>

E<sup>\*</sup>

F<sup>\*</sup>

C<sub>4</sub>

C<sub>3</sub>

C<sub>2</sub>

C<sub>1</sub>

C<sub>4</sub><sup>\*</sup>

C<sub>3</sub><sup>\*</sup>

C<sub>2</sub><sup>\*</sup>

D<sub>4</sub>

D<sub>3</sub>

D<sub>2</sub>

D<sub>4</sub><sup>\*</sup>

D<sub>3</sub><sup>\*</sup>

D<sub>2</sub><sup>\*</sup>

E<sub>4</sub>

E<sub>3</sub>

E<sub>2</sub>

F<sub>4</sub>

F<sub>3</sub>

F<sub>2</sub>

F<sub>4</sub><sup>\*</sup>

F<sub>3</sub><sup>\*</sup>

F<sub>2</sub><sup>\*</sup>

G<sub>4</sub>

G<sub>3</sub>

G<sub>2</sub>

G<sub>4</sub><sup>\*</sup>

G<sub>3</sub><sup>\*</sup>

G<sub>2</sub><sup>\*</sup>

A<sub>4</sub>

A<sub>3</sub>

A<sub>2</sub>

A<sub>4</sub><sup>\*</sup>

A<sub>3</sub><sup>\*</sup>

A<sub>2</sub><sup>\*</sup>

B<sub>4</sub>

B<sub>3</sub>

B<sub>2</sub>

C<sub>1</sub>

C<sub>2</sub>

C<sub>3</sub>

C<sub>4</sub>

C<sub>5</sub>

C<sub>6</sub>

C<sub>7</sub>

C<sub>8</sub>

C<sub>9</sub>

C<sub>10</sub>

C<sub>11</sub>

C<sub>12</sub>

C<sub>13</sub>

C<sub>14</sub>

C<sub>15</sub>

C<sub>16</sub>

C<sub>17</sub>

C<sub>18</sub>

C<sub>19</sub>

C<sub>20</sub>

C<sub>21</sub>

C<sub>22</sub>

C<sub>23</sub>

C<sub>24</sub>

C<sub>25</sub>

C<sub>26</sub>

C<sub>27</sub>

C<sub>28</sub>

C<sub>29</sub>

C<sub>30</sub>

C<sub>31</sub>

C<sub>32</sub>

C<sub>33</sub>

C<sub>34</sub>

C<sub>35</sub>

C<sub>36</sub>

C<sub>37</sub>

C<sub>38</sub>

C<sub>39</sub>

C<sub>40</sub>

C<sub>41</sub>

C<sub>42</sub>

C<sub>43</sub>

C<sub>44</sub>

C<sub>45</sub>

C<sub>46</sub>

C<sub>47</sub>

C<sub>48</sub>

C<sub>49</sub>

C<sub>50</sub>

C<sub>51</sub>

C<sub>52</sub>

C<sub>53</sub>

C<sub>54</sub>

C<sub>55</sub>

C<sub>56</sub>

C<sub>57</sub>

C<sub>58</sub>

C<sub>59</sub>

C<sub>60</sub>

C<sub>61</sub>

C<sub>62</sub>

C<sub>63</sub>

C<sub>64</sub>

C<sub>65</sub>

C<sub>66</sub>

C<sub>67</sub>

C<sub>68</sub>

C<sub>69</sub>

C<sub>70</sub>

C<sub>71</sub>

C<sub>72</sub>

C<sub>73</sub>

C<sub>74</sub>

C<sub>75</sub>

C<sub>76</sub>

C<sub>77</sub>

C<sub>78</sub>

C<sub>79</sub>

C<sub>80</sub>

C<sub>81</sub>

C<sub>82</sub>

C<sub>83</sub>

C<sub>84</sub>

C<sub>85</sub>

C<sub>86</sub>

C<sub>87</sub>

C<sub>88</sub>

C<sub>89</sub>

C<sub>90</sub>

C<sub>91</sub>

C<sub>92</sub>

C<sub>93</sub>

C<sub>94</sub>

C<sub>95</sub>

C<sub>96</sub>

C<sub>97</sub>

C<sub>98</sub>

C<sub>99</sub>

C<sub>100</sub>

C<sub>101</sub>

C<sub>102</sub>

C<sub>103</sub>

C<sub>104</sub>

C<sub>105</sub>

C<sub>106</sub>

C<sub>107</sub>

C<sub>108</sub>

C<sub>109</sub>

C<sub>110</sub>

C<sub>111</sub>

C<sub>112</sub>

C<sub>113</sub>

C<sub>114</sub>

C<sub>115</sub>

C<sub>116</sub>

C<sub>117</sub>

C<sub>118</sub>

C<sub>119</sub>

C<sub>120</sub>

C<sub>121</sub>

C<sub>122</sub>

C<sub>123</sub>

C<sub>124</sub>

C<sub>125</sub>

C<sub>126</sub>

C<sub>127</sub>

C<sub>128</sub>

C<sub>129</sub>

C<sub>130</sub>

C<sub>131</sub>

C<sub>132</sub>

C<sub>133</sub>

C<sub>134</sub>

C<sub>135</sub>

C<sub>136</sub>

C<sub>137</sub>

C<sub>138</sub>

C<sub>139</sub>

C<sub>140</sub>

C<sub>141</sub>

C<sub>142</sub>

C<sub>143</sub>

C<sub>144</sub>

C<sub>145</sub>

C<sub>146</sub>

C<sub>147</sub>

C<sub>148</sub>

C<sub>149</sub>

C<sub>150</sub>

C<sub>151</sub>

C<sub>152</sub>

C<sub>153</sub>

C<sub>154</sub>

C<sub>155</sub>

C<sub>156</sub>

C<sub>157</sub>

C<sub>158</sub>

C<sub>159</sub>

C<sub>160</sub>

C<sub>161</sub>

C<sub>162</sub>

C<sub>163</sub>

C<sub>164</sub>

C<sub>165</sub>

C<sub>166</sub>

C<sub>167</sub>

C<sub>168</sub>

C<sub>169</sub>

C<sub>170</sub>

C<sub>171</sub>

C<sub>172</sub>

C<sub>173</sub>

C<sub>174</sub>

C<sub>175</sub>

C<sub>176</sub>

C<sub>177</sub>

C<sub>178</sub>

C<sub>179</sub>

C<sub>180</sub>

C<sub>181</sub>

C<sub>182</sub>

C<sub>183</sub>

C<sub>184</sub>

C<sub>185</sub>

C<sub>186</sub>

C<sub>187</sub>

C<sub>188</sub>

C<sub>189</sub>

C<sub>190</sub>

C<sub>191</sub>

C<sub>192</sub>

C<sub>193</sub>

C<sub>194</sub>

C<sub>195</sub>

C<sub>196</sub>

C<sub>197</sub>

C<sub>198</sub>

C<sub>199</sub>

C<sub>200</sub>

C<sub>201</sub>

C<sub>202</sub>

C<sub>203</sub>

C<sub>204</sub>

C<sub>205</sub>

C<sub>206</sub>

C<sub>207</sub>

C<sub>208</sub>

C<sub>209</sub>

C<sub>210</sub>

C<sub>211</sub>

C<sub>212</sub>

C<sub>213</sub>

C<sub>214</sub>

C<sub>215</sub>

C<sub>216</sub>

C<sub>217</sub>

C<sub>218</sub>

C<sub>219</sub>

C<sub>220</sub>

C<sub>221</sub>

C<sub>222</sub>

C<sub>223</sub>

C<sub>224</sub>

C<sub>225</sub>

C<sub>226</sub>

C<sub>227</sub>

C<sub>228</sub>

C<sub>229</sub>

C<sub>230</sub>

C<sub>231</sub>

C<sub>232</sub>

C<sub>233</sub>

C<sub>234</sub>

C<sub>235</sub>

C<sub>236</sub>

C<sub>237</sub>

C<sub>238</sub>

C<sub>239</sub>

C<sub>240</sub>

C<sub>241</sub>


C<sub>242</sub>

C<sub>243</sub>

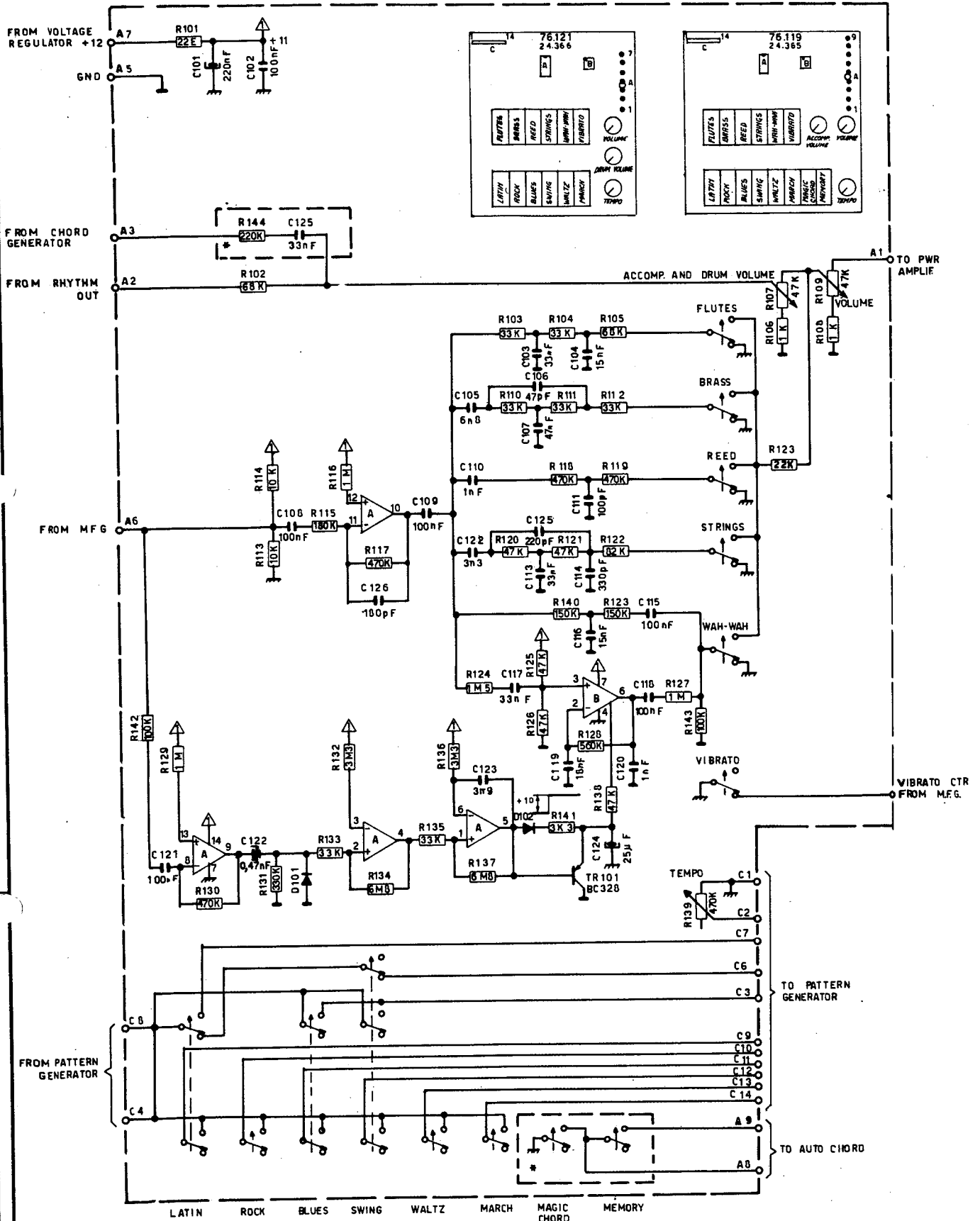
C<sub>244</sub>

C<sub>245</sub>

- NOTES :
- 1) IC A-B-C-D = IC 101-2-3-4 = HBF 4727 = +VCC pin 7 - GND pin 1
  - 2) IC E = IC 105 = 50241 = +VCC pin 1 - GND pin 3
  - 3) IC F = IC 106 = 4001 = +VCC pin 14 - GND pin 7
  - 4) ALL RESISTORS 1/4 WATT UNLESS OTHERWISE SPECIFIED.
  - 5) ALL VOLTAGES MEASURED WITH RESPECT GND.
  - 6) \* ONLY MODEL RODEO 49.

REV.	SUBJECT		DATE	CKD
ISSUED	DATE	BY	USED ON:	
DRAWN	18-12-79	<i>Robert</i>	RODEO 37/49	
CKD	25-1-78	<i>Robert</i>		
APPRO	25-1-78	<i>Robert</i>		
N°. SP0 - 1249			SCHEMATIC DIAGRAM: MASTER FREQUENCY GENERATOR.	
REPLACED BY				
REPLACING				

# FILTER & TRIGGER 76.121 - 76.119

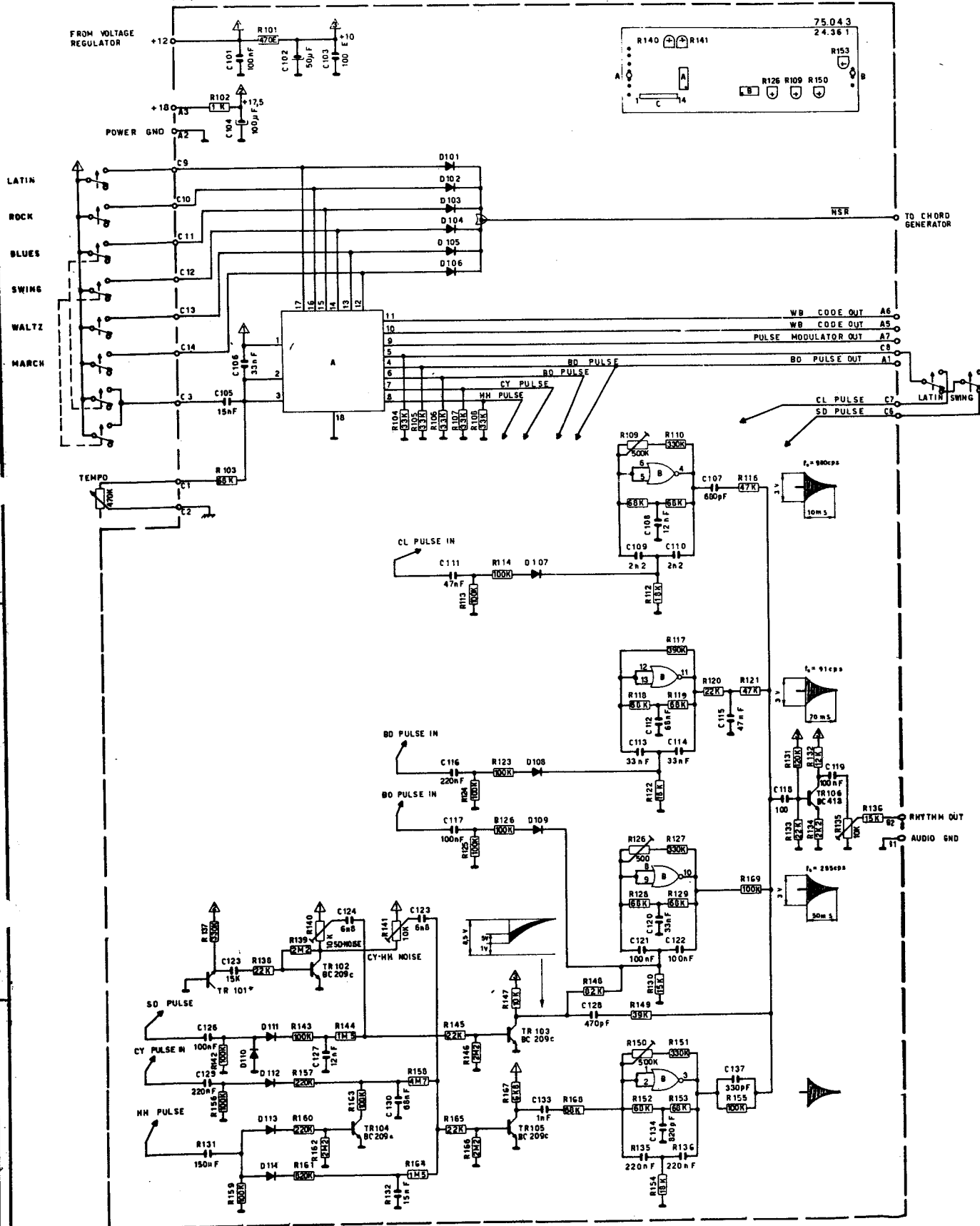


- NOTES :
- 1) IC A = IC 101 = LM 3900
  - 2) IC B = IC 102 = CA 3080
  - 3) ALL RESISTORS 1/4 WATT UNLESS OTHERWISE SPECIFIED
  - 4) ALL DIODES FDH 999 UNLESS OTHERWISE SPECIFIED
  - 5) ALL VOLTAGES MEASURED WITH RESPECT GND
  - 6) \* ONLY MODEL RODEO 49

REV.	DATE	BY	SUBJECT	DATE	CHKD
ISSUED	10-27-77	W. J. J.	USED ON:		
DRAWN	10-27-77	W. J. J.	RODEO 37/49		
CHKD	10-27-77	W. J. J.			
APPROV	10-27-77	W. J. J.			
N. 50-1250			SCHEMATIC DIAGRAM:		
REPLACED BY			FILTER AND TRIGGER		
REPLACING					

**DDR**  
MONDAINO (FO)

# PATTERN GENERATOR & VOICING BOARD 75.043



## NOTES

- 1) IC A = IC 101 = AY-9-1315 - +12 pin 1 - GND pin 18
- 2) IC B = IC 102 = 4001 - +10 pin 4 - GND pin 7
- 3) \*TR 101 - BLUE DOT - FACTORY SELECTED CN 09.401
- 4) ALL RESISTORS 1/4 WATT UNLESS OTHERWISE SPECIFIED.
- 5) ALL DIODES FOR 900 (OR EQUIVALENT) UNLESS OTHERWISE SPECIFIED.
- 6) ALL VOLTAGES MEASURED WITH RESPECT GND.

REV	SUBJECT	DATE	CKD
ISSUED	DATE	BY	
DRAWN	14-10-77	CH	
CKD	25-1-78	CH	
APPROV	2-7-78	CH	
N: 50-1252			
REPLACED BY			
REPLACING			

SCHEMATIC DIAGRAM:  
PATTERN GENERATOR AND  
VOICING BOARD.

