

- NOTES: UNLESS SPECIFIED OTHERWISE
- 1. ALL RESISTORS IN OHMS
 - 2. ALL CAPACITORS IN MICROFARADS
 - 3. RIGHT FRONT CHANNEL SHOWN ONLY
 - 4. COMMON PARTS DESIGNATORS FROM 1 TO 99
 - 5. RIGHT REAR DESIGNATORS FROM 100 TO 199
 - 6. LEFT REAR DESIGNATORS FROM 200 TO 299
 - 7. RIGHT FRONT DESIGNATORS FROM 300 TO 399
 - 8. LEFT FRONT DESIGNATORS FROM 400 TO 499

SS-210SM (BCX71J) HAS BEEN REPLACED. REF DES Q112, 113 Q312, Q412
NEW PART # SS-204SM (MTB5401L) PER ECO 3564

RM/10-105B (1M 5%) REF DES R35 HAS BEEN REMOVED PER ECO 3640

CERHF-337BL-024 (330uf 16v) HAS BEEN REPLACED. REF DES C3 5 6
NEW PART # CERHF-337I-024 (330uf 16v) PER ECO 3673

SS-204SM (MMBT5401L) HAS BEEN DELETED
REF DES Q112 212 312 412
RM/10-114B (10K) HAS BEEN DELETED
REF DES R128 228 328 428
PER ECO 3737

SS-260SM (BAV99L) HAS BEEN REPLACED
REF DES D7
NEW PART # SS-162-051 1N4148
PER ECO 3656

SS-761 (MTA30N6E) HAS BEEN REPLACED. REF DES Q1 2 9 10
NEW PART # SS-0967 (IRFZ42)
PER ECO 3758

SS-209SM (BCX70J) HAS BEEN REPLACED
REF DES Q4 6 306 307 308 316 317 318 320
NEW PART # SS-0792 (MMBT3904LT1)

SS-210SM (BCX71J) HAS BEEN REPLACED
REF DES. Q3 5 7 301 302 303 309
312 313 314 315
NEW PART # SS-0791 (MMT3906LT1)
PER ECO 3566

SS-760-046 HAS BEEN CHANGED
REF DES Q126 127 226 227
326 327 426 427
NEW PART # SS-RFP15N06 (TO-220 HARRIS)
PER ECO 3678

PRIMARY PART # SS-802SM TL494
SUBSTITUTE PART # SS-0722 TL594
PER ECO 3450

SS-760-047 HAS BEEN REPLACED
REF DES Q126 127 226 227
326 327 426 427
NEW PART # SS-760-046
PER ECO 3619

CERHF-337I (330UF 16V) HAS BEEN REPLACED. REF DES C3 5 6
NEW PART # CERHF-337BL (330UF 35V)
PER ECO 3667

SS-760 (MTA15N06) HAS BEEN REPLACED. REF DES Q126 127 226 227 326 327 426 427
NEW PART # SS-RFP15N06 (TO-220 HARRIS)
PER ECO 3713

SS-0967 (IRFZ42) HAS BEEN REPLACED. REF DES Q1 2 9 10
NEW PART # SS-761 (MTA30N06E)
PER ECO 3791

FOR REF DES Q4, 6, 8, 306, 307 308, 316, 317, 318, 320
PRIMARY PART # BCX70J
SECONDARY PART # BC846BL
PER ECO 3419


PRIMARY PART # SS-802SM TL494
SUBSTITUTE PART # SS-0722 TL594
PER ECO 3450

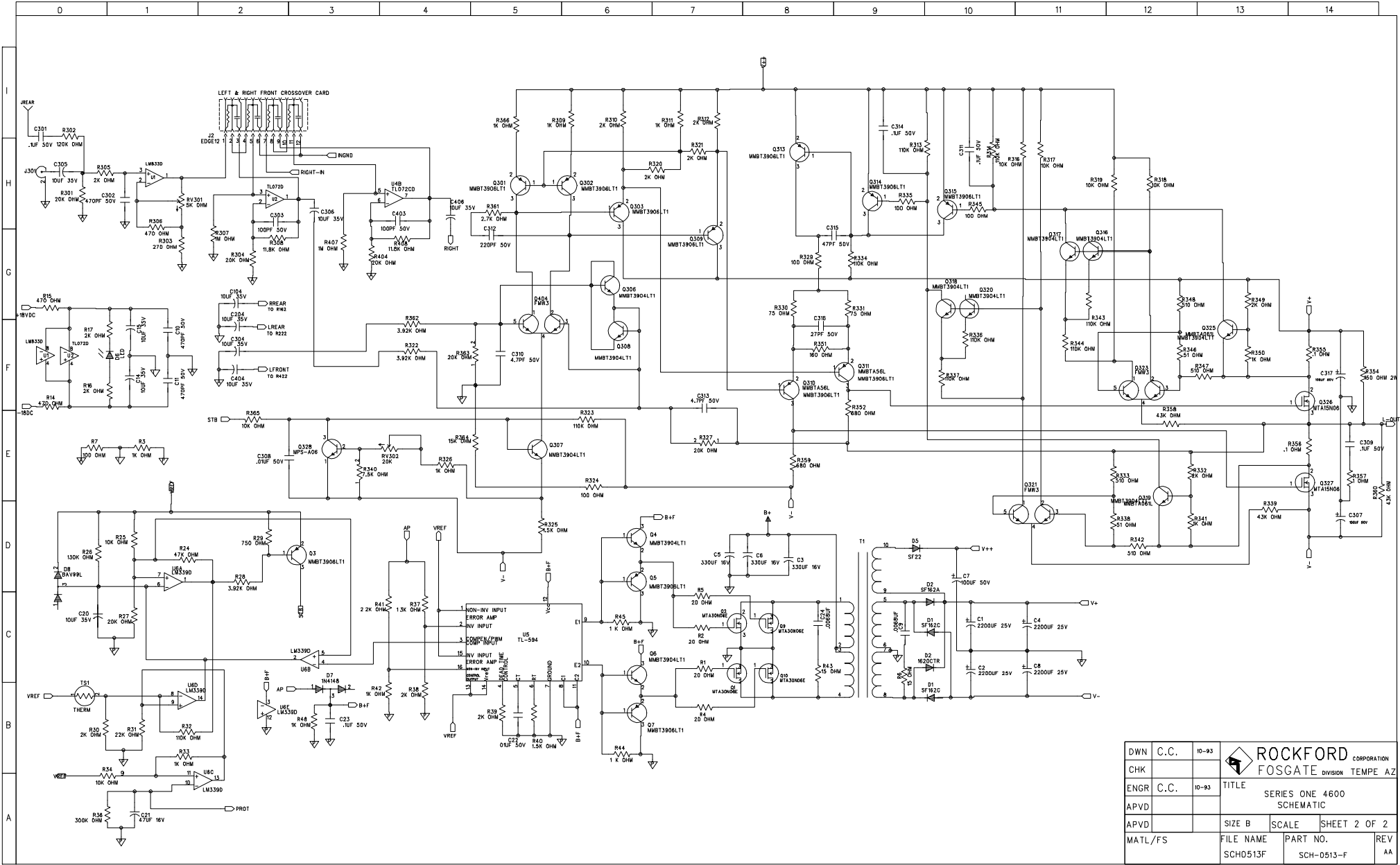
RM/10-821B (820 OHM 1/10W 5%) HAS BEEN REPLACED. REF DES R125 R225 R325 R425
NEW PART # RM/10-152B (1.5K 1/10W 5%)
RM/10-2002B (20.0K /10W 5%) HAS BEEN REPLACED. REF DES R140 R240 R340 R440
NEW PART # RM/10-752B (7.5K 1/10W 5%)
PER ECO 3533


PRIMARY PART IS SS-RFP15N06-047
TO-220 HARRIS
REF DES Q126, 127, 226, 227,
326, 327, 426, 427
SECONDARY PART # IS SS-760-047
MTA15N06
PER ECO 3494

| CORD | REV | REVISION RECORD | AUTHORITY | DATE | CORD | REV | REVISION RECORD | AUTHORITY | DATE |
|------|-----|---|-----------|-------|------|-----|--------------------|-----------|-------|
| | X | ECO 4044 CHANGE CDS-100CAAA TO CDS-047CAAA CHANGE CDS-101CAAA TO CDS221CAAA | H. MILLER | 10-95 | | A | PRODUCTION RELEASE | W.C. | 01-94 |
| | Y | ECO 4055 REV G PCBOARD RELEASE | H. MILLER | 11-95 | | B | ECO 3419 | W.C. | 3-94 |
| | Z | ECO 3888 REPLACE SS-1051-046 (MTA150N05HD) REF DES Q1 Q2 WITH SS-761-046 (MTA30N06E) | H.M. | 12-95 | | C | ECO 3450 | W.C. | 3-94 |
| | AA | ECO 4256 REPLACE REF DES D2 SS-758 (1610CTR) WITH SS-0757 (1620CTR) | H.M. | 03-96 | | D | ECO 3494 | W.C. | 3-94 |
| | | | | | | E | ECO 3495 | W.C. | 3-94 |

| | | | | |
|--|---|--|------|-------|
| | F | ECO 3533 | W.C. | 5-94 |
| | G | ECO 3564 | W.C. | 8-94 |
| | H | ECO 3566 | W.C. | 8-94 |
| | I | ECO 3619 | W.C. | 8-94 |
| | J | ECO 3640 | W.C. | 10-94 |
| | K | ECO 3656 | W.C. | 10-94 |
| | L | ECO 3667 | W.C. | 10-94 |
| | M | ECO 3678 | W.C. | 10-94 |
| | N | ECO 3673 | H.M. | 12-94 |
| | O | ECO 3686 | H.M. | 12-94 |
| | P | ECO 3713 | H.M. | 12-94 |
| | Q | ECO 3737 | H.M. | 12-94 |
| | R | ECO 3758 | H.M. | 12-94 |
| | S | ECO 3791 | H.M. | 12-94 |
| | T | ECO 3818 | H.M. | 5-95 |
| | U | ECO 3833 | H.M. | 5-95 |
| | V | ECO 3854 | H.M. | 5-95 |
| | W | ECO 3983 REPLACE SS-RFP15N06-046 REF DES Q126 Q127 Q226 Q227 Q326 Q327 Q426 Q427 WITH SS-760-046 | H.M. | 9-95 |

| | | | | | | |
|---------|------|-------|---|------------|--------------|-----|
| DWN | C.C. | 10-93 |  ROCKFORD CORPORATION FOSGATE DIVISION TEMPE AZ | | | |
| CHK | | | | | | |
| ENGR | C.C. | 10-93 | TITLE | | | |
| APVD | | | SERIES ONE 4600 SCHEMATIC | | | |
| APVD | | | SIZE B | SCALE | SHEET 1 OF 2 | |
| MATL/FS | | | FILE NAME | PART NO. | | REV |
| | | | SCH0513G | SCH-0513-G | | AA |



| | | | |
|---------|------|-------|---|
| DWN | C.C. | 10-93 |  ROCKFORD CORPORATION FOSGATE DIVISION TEMPE AZ |
| CHK | | | |
| ENGR | C.C. | 10-93 | TITLE |
| APVD | | | SERIES ONE 4600 SCHEMATIC |
| APVD | | | SIZE B |
| MATL/FS | | | SCALE |
| | | | SHEET 2 OF 2 |
| | | | FILE NAME |
| | | | PART NO. |
| | | | REV |
| | | | SCH-0513-F |