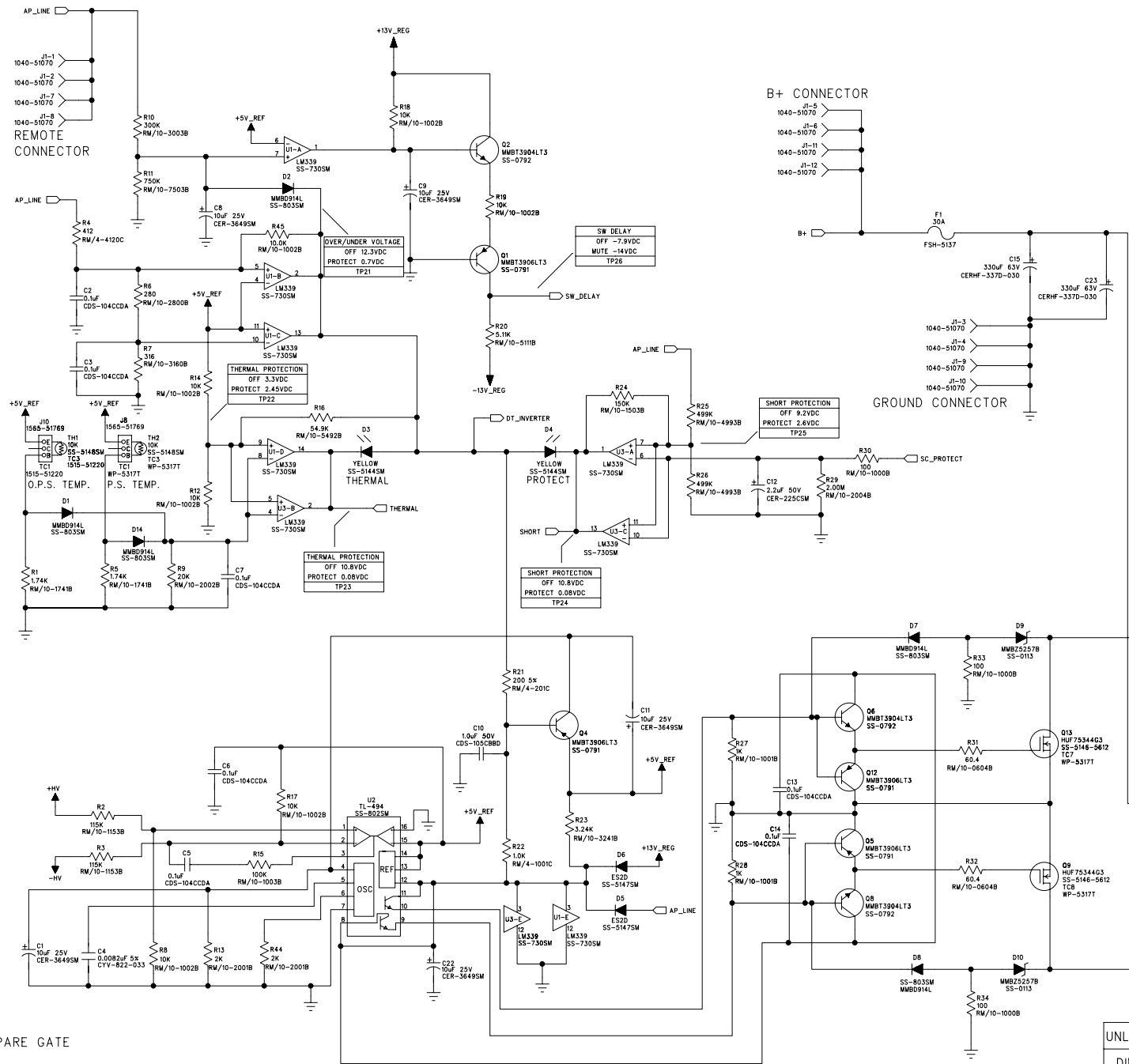
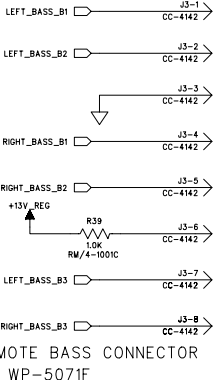


DRAWING REVISION RECORD				
REV	ECO#	DESCRIPTION	DATE	REV BY
A	AZ7170	T-CLAD COST REDUCTION/PART # CHANGE	15-SEP-04	J L J
B	AZ7471	(R110,R210) WAS: RM/10-1470B, IS: RM/10-1100B	28-DEC-04	D H
B	AZ7809	INITIAL RELEASE (2006) P200.2	28-FEB-06	D H

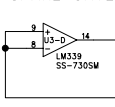


LOGO PCB CONNECTOR
TO WP-5124C (2004)

LED PCB CONNECTOR
TO 1495-52477 (2006)





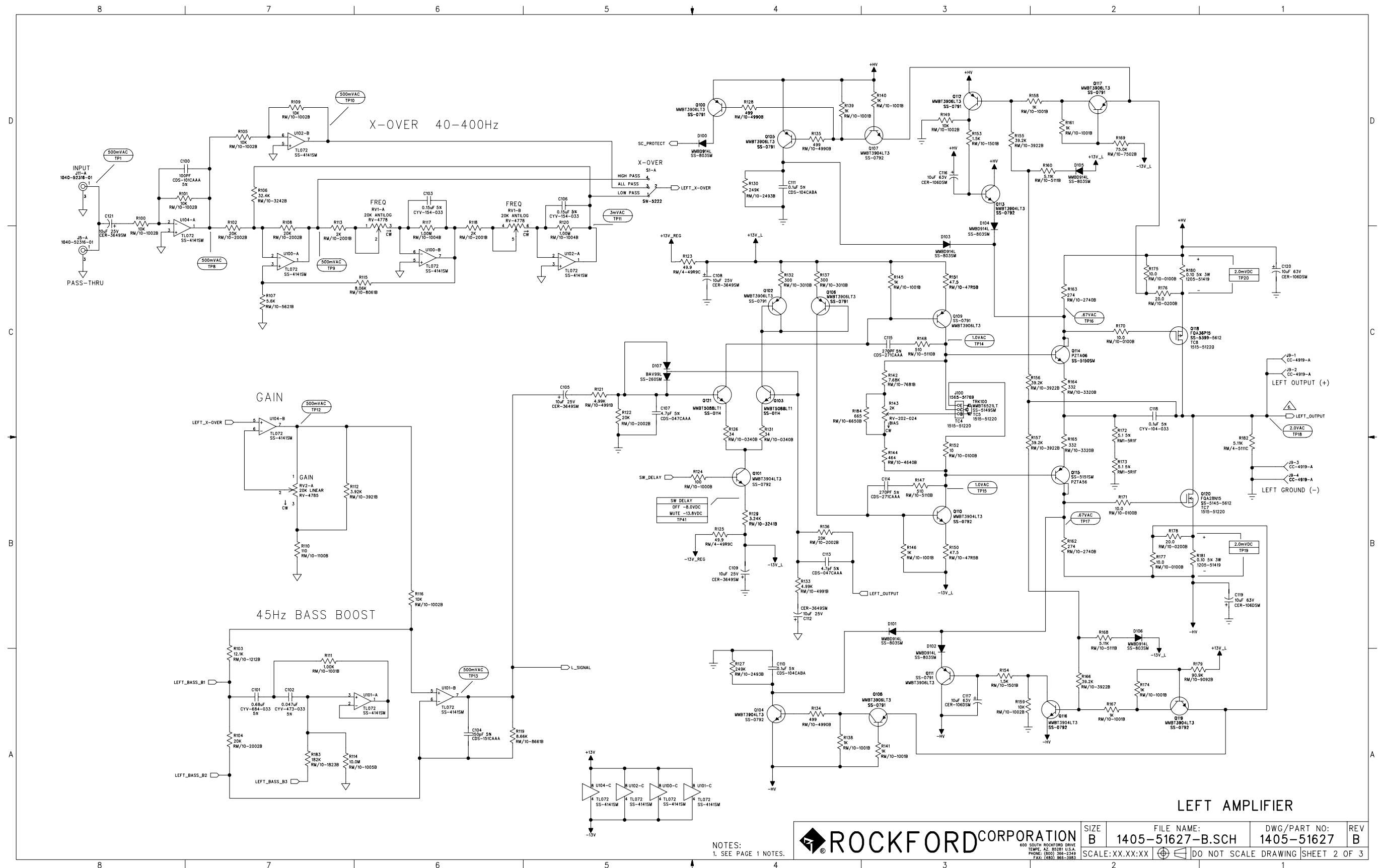
SPARE GATE

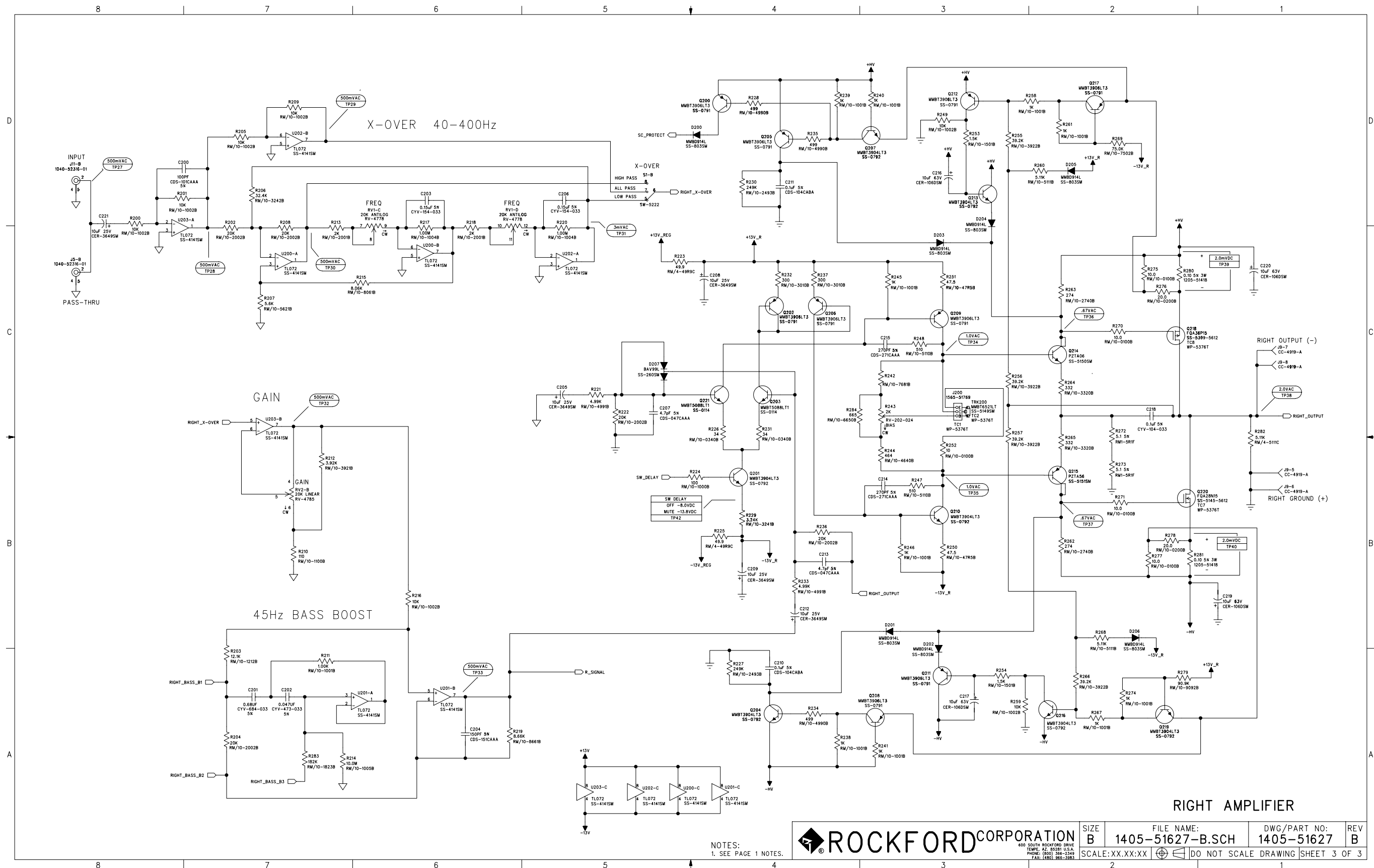


5. TESTPOINTS MEASURED WITH RESPECT TO GROUND WITH A DVM MEASUREMENTS MAY VARY +/- 20% TEST CONDITIONS:
VBI+ = 13.5 VDC, XOVER SET TO ALL PASS, GAIN SET TO MINIMUM, REMOTE BASS BOOST NOT CONNECTED, LOGO ASSEMBLY CONNECTED.
DC TEST POINTS MEASURED WITH NO INPUT SIGNAL
AC TEST POINTS MEASURED WITH 500 mVAC 1kHz UNBALANCED SINE WAVE AT INPUT JACK. 2 OHM LOAD PER CHANNEL AT OUTPUT CONNECTOR.
4. ALL CAPACITORS 20% TOLERANCE.
3. ALL RESISTORS IN OHMS, 1% TOLERANCE.
- 2.
- 1.
- NOTES: (UNLESS OTHERWISE SPECIFIED)

MAXIMUM OUTPUT TEST CONDITIONS:
VBI+ = 14.4 VDC, XOVER SET TO ALL PASS, GAIN SET TO MINIMUM, REMOTE BASS BOOST NOT CONNECTED, LOGO ASSEMBLY CONNECTED.
3.67 VAC 1kHz SINE WAVE AT INPUT JACK, 2 OHM LOAD PER CHANNEL AT OUTPUT CONNECTOR.
VOUT = 14.14 VAC, POWER OUT = 100 W/CHANNEL
THD+N <= 0.08%, 10Hz - 22kHz FILTERED.

UNLESS OTHERWISE SPECIFIED:		SIGNATURES		DATE		<div><div></div><div>ROCKFORD CORPORATION</div><div>600 SOUTH ROCKFORD DRIVE TEMPE, AZ 85283 U.S.A. PHONE: (602) 546-2348 FAX: (480) 966-3983</div></div>			
DIMENSIONS ARE IN INCHES.		DRAWN BY R J P		27-OCT-03		<div>DRAWING TITLE:</div> <div>2004 PUNCH P2002</div> <div>POWER SUPPLY</div>			
TOLERANCES ARE:		ELEC ENGR							
X.XX +/- X.XX X.XXX +/- X.XXX ANGLES +/- 1° CONCENTRICITY +/- X.XX SURFACE FINISH XX		MECH ENGR							
CONFIDENTIAL COPYRIGHT 2004 ROCKFORD CORPORATION		PROD ENGR							
THIS DRAWING IS THE PROPERTY OF ROCKFORD CORPORATION AND EMBODIES CONFIDENTIAL INFORMATION, TRADE SECRET INFORMATION, AND/OR KNOW-HOW WHICH IS THE PROPERTY OF ROCKFORD CORPORATION. BY ACCEPTING THIS DRAWING, THE RECIPIENT AGREES NOT TO PROVIDE, OR OTHERWISE MAKE AVAILABLE, THE DRAWING, OR ANY INFORMATION OR KNOW-HOW EMBODIED THEREIN, TO ANY THIRD PARTY WITHOUT PRIOR WRITTEN AUTHORIZATION.		SUPPLY CHAIN							
SIZE		FILE NAME:		DWG/PART NO:		REV			
B		1405-51627-B.SCH		1405-51627		B			
SCALE:XX.XX:XX				DO NOT SCALE DRAWING		SHEET 1 OF 3			





NOTES:
1. SEE PAGE 1 NOTES.

ROCKFORD CORPORATION
400 SOUTH ROCKFORD DRIVE
TOWNSHIP, AZ 85281 U.S.A.
PHONE: (800) 368-2349
FAX: (480) 966-3983