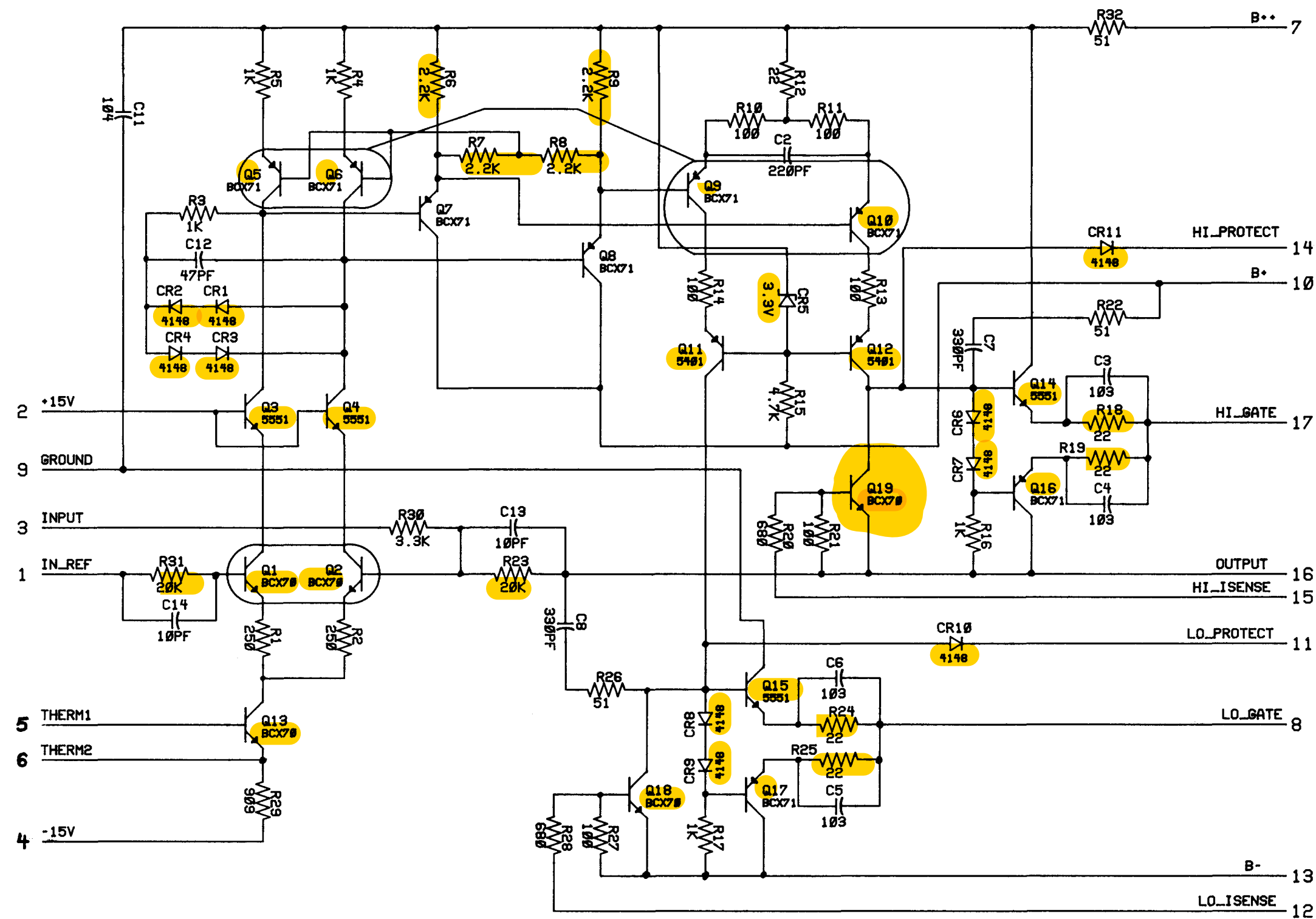


FINAL PRINT
 Date 11-9-90
 Approval *J. P. [Signature]*

ROCKFORD CORPORATION 613 S. ROCKFORD DR TEMPE, AZ 85281			
TITLE: PUNCH INPUT MODULE			
SIZE C	DRAWN: JRF ENGR: JRF	DRAWING NUMBER PIM-1SCH-PIM	REV. B
SCALE:	DATE: 11/6/89	SHEET 1 OF 1	



FINAL PRINT

Date 11-7-90

Approval *J. P. [Signature]*

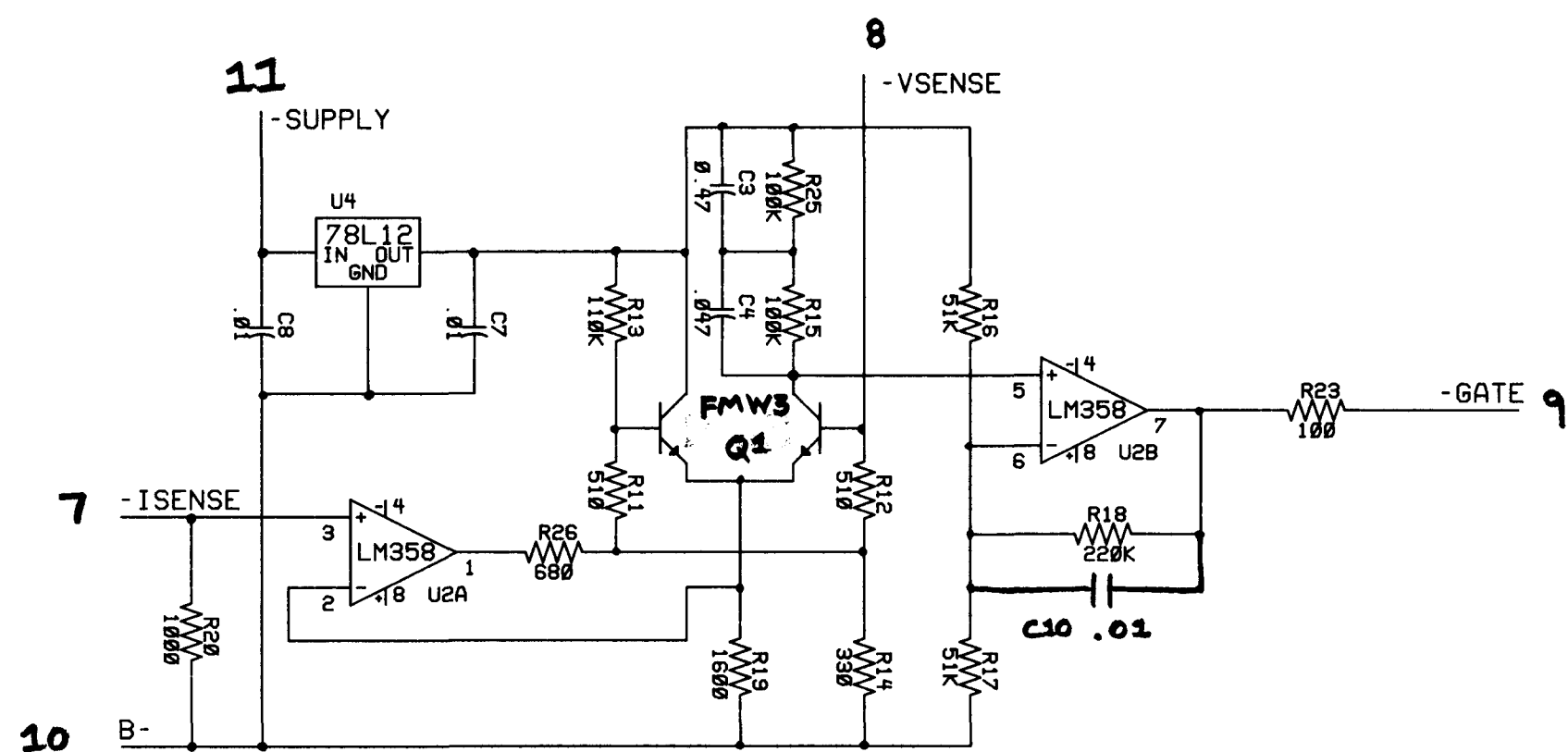
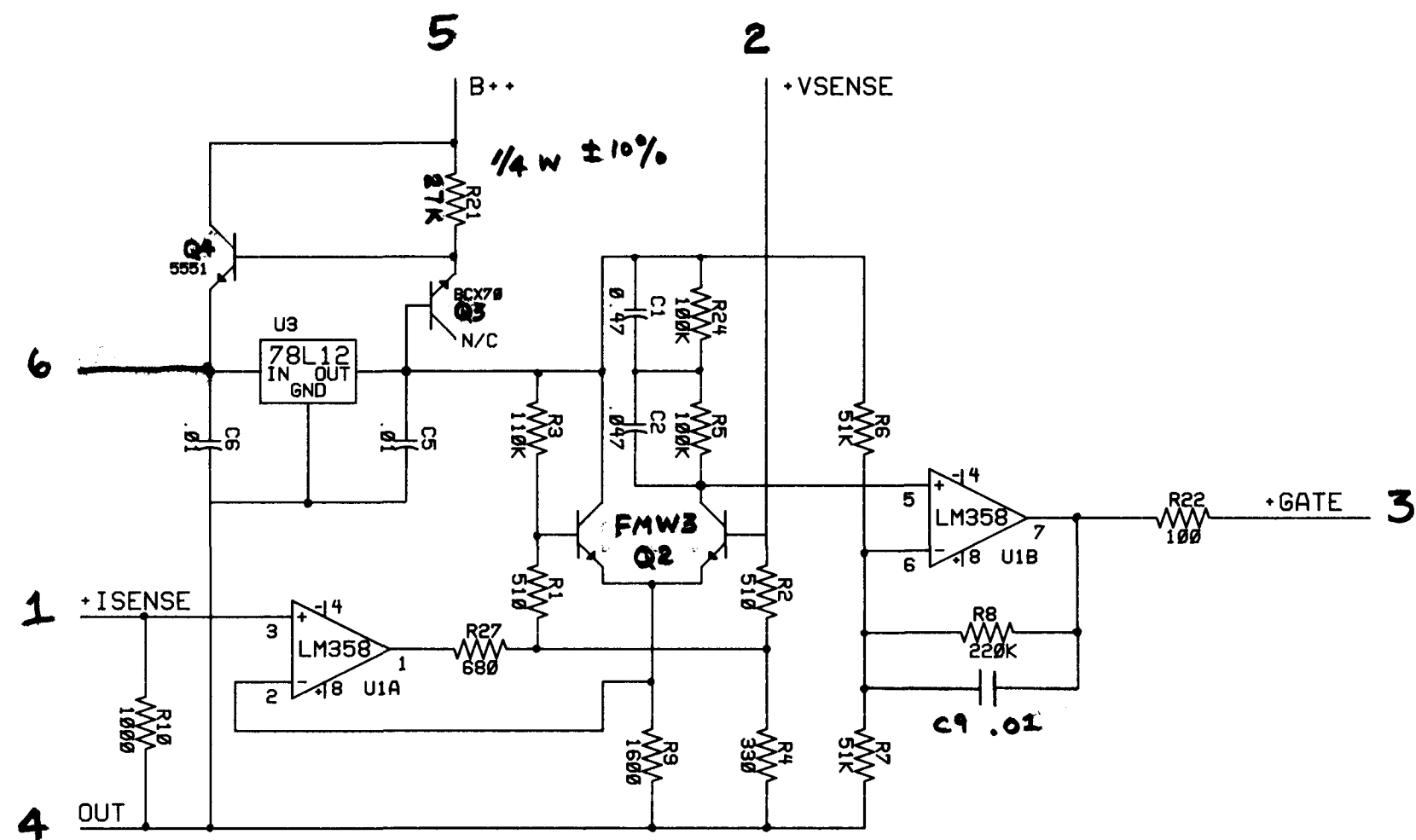
ROCKFORD CORPORATION
613 S. ROCKFORD DR TEMPE, AZ 85281

TITLE: PUNCH AMP MODULE

SIZE	DRAWN: JRF	DRAWING NUMBER	REV.
C	ENGR: JJP	PAM-1SCM-POM	A

SCALE: DATE: 10/20/89 SHEET

```
VSENSE RESISTOR -> ((B+) - 1) * 100K
0.1 V AT ISENSE -> THRESHOLD
TIME CONSTANTS FOR BUZ11: 50 MS, 5 MS
```



FINAL PRINT

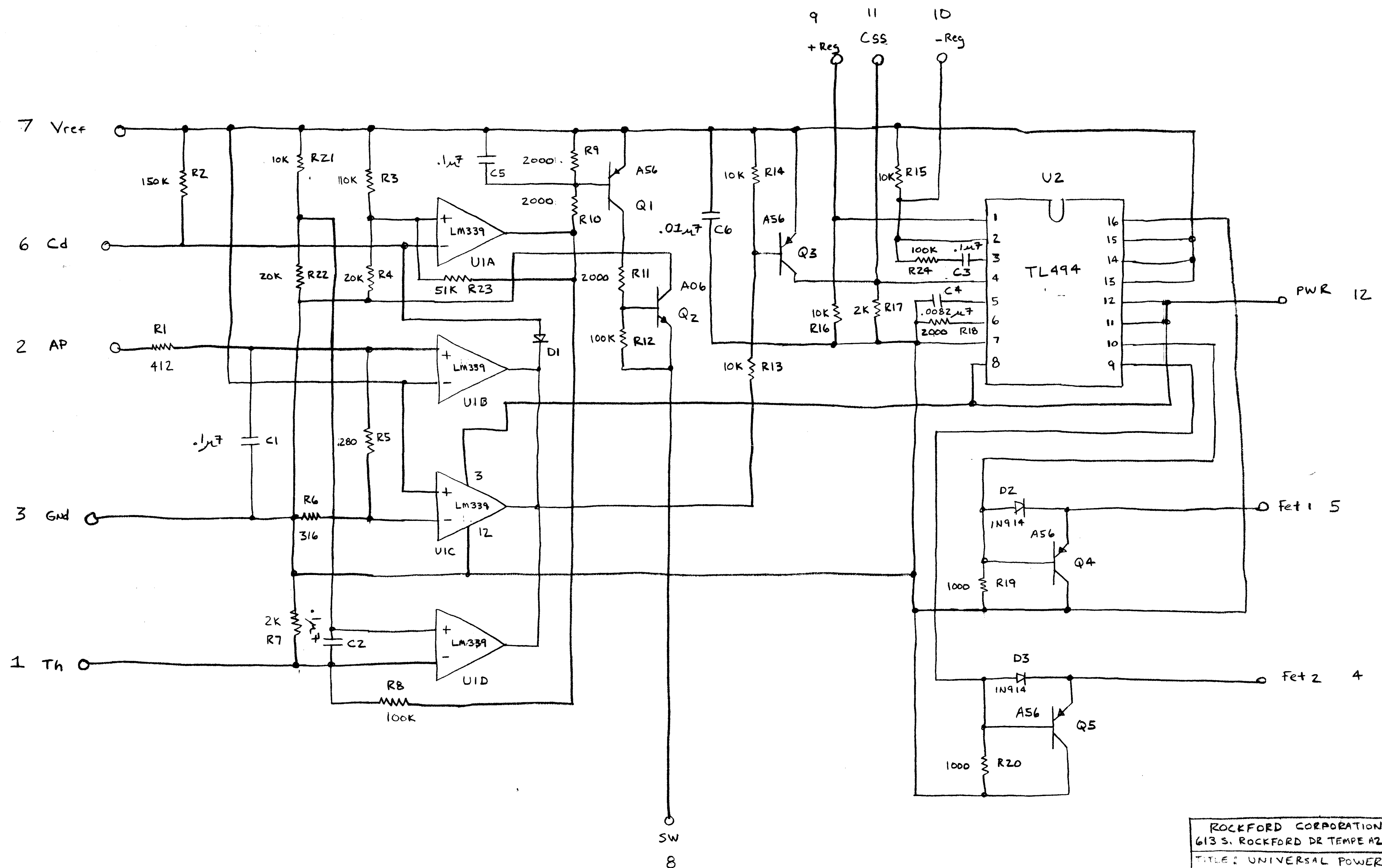
Date 11-7-90
Approval J. Plantz

ROCKFORD CORPORATION
613 S. ROCKFORD DR TEMPE, AZ 85281

TITLE:
PUNCH PROTECT MODULE 1

SIZE C	DRAWN:	DRAWING NUMBER	REV.
	ENGR: JRF	PPM 1 SCH-PPM	B

SCALE:	DATE: 9/29/89	SHEET 1061
--------	---------------	------------



FINAL PRINT
 Date 11-7-90
 Approval *J. Clutz*

ROCKFORD CORPORATION 613 S. ROCKFORD DR TEMPE AZ,			
TITLE: UNIVERSAL POWER SUPPLY MODULE 1			
C	DRAWN: JJP	DRAWING NO.	REV
	ENGR: JJP	SCH-PWM	A
SCALE:		10/4/89	SHEET 10/1