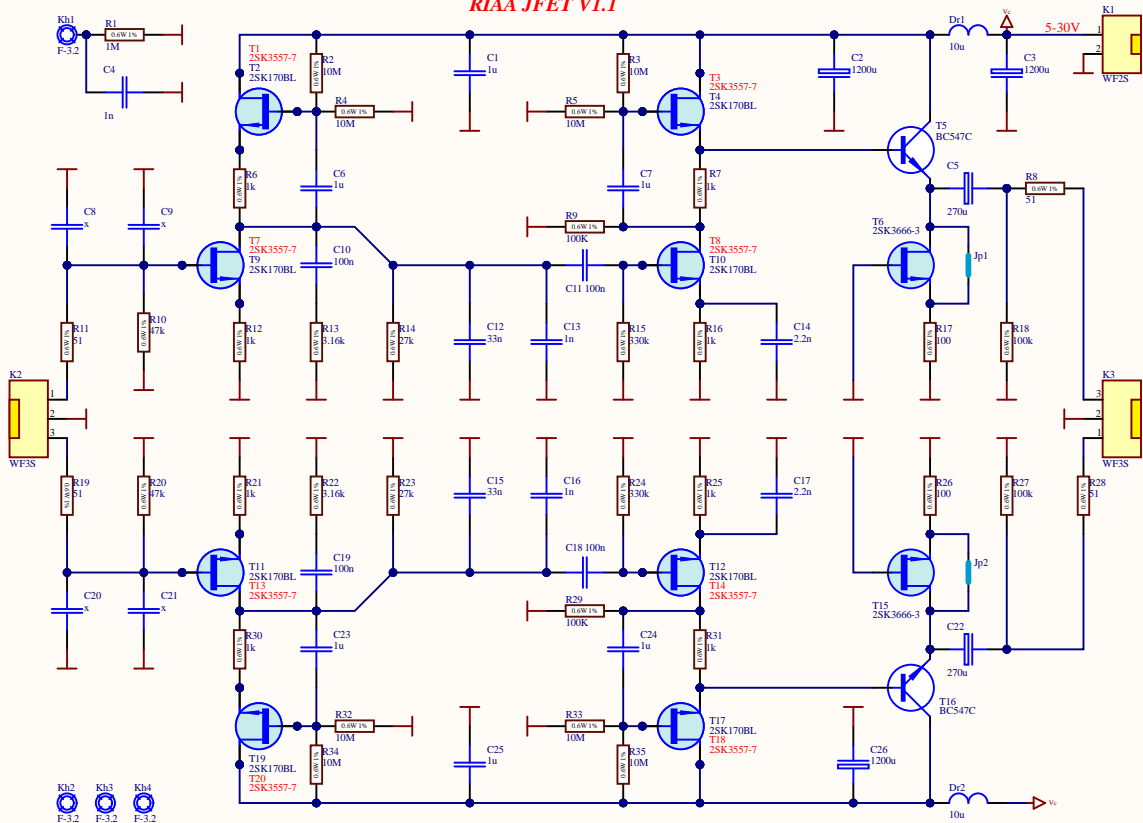
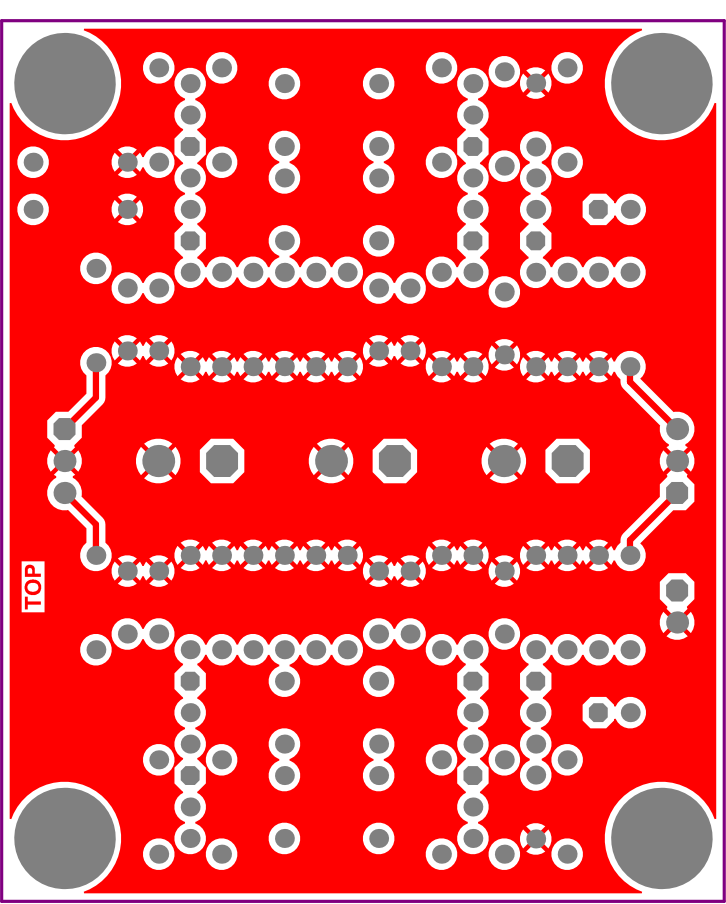


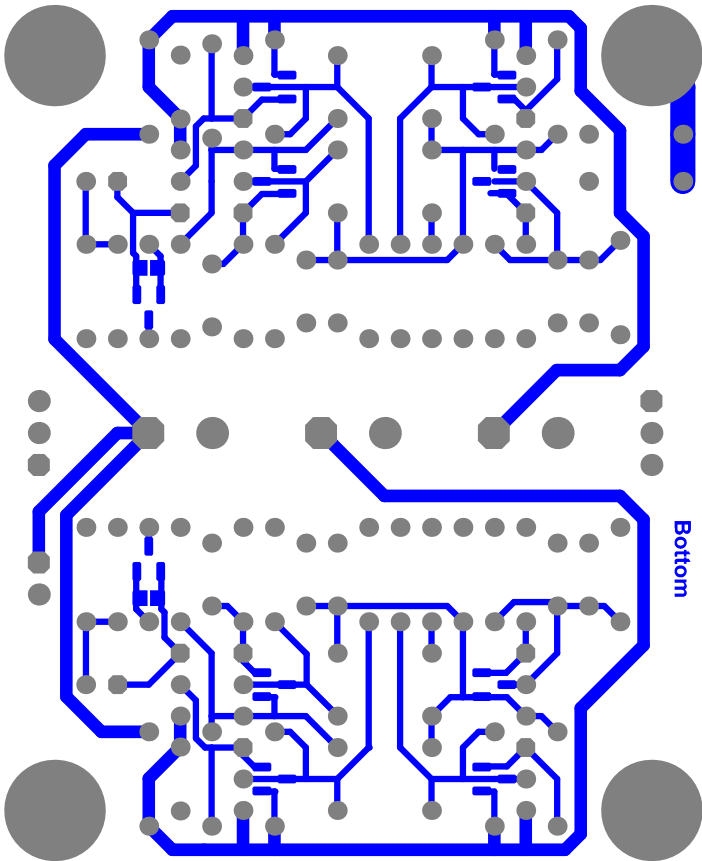
RIAA JFET V1.1







Bottom



RIAA JFET V1.1

T2
2SK170BL

T4
2SK170BL

R6
1k

R2
10M

C6
1u

C7
1u

R3
10M

R7
1k

C1
1u

Dr1
10u

C5
270u

R1
1M

C4
1n

T9
2SK170BL

C10
100n

C11
100n

2SK170BL

T10
BC547C

T5

R11
51

C9
x

C8
x

R12
1k

R10
47k

R14
27k

R13

R4
10M

R5
10M

C13
1n

C12
33n

R15
330k

R16
1k

C14
2.2n

R9
100k

R17
100

R18
100k

R8
51

Input

C2
1200u

3.16k

3.16k

C26
1200u

C3
1200u

Output

R19
51

C20
x

C21
x

R21
1k

R20
47k

R23
27k

R22

R32
10M

R33
10M

C16
1n

C15
33n

R24
330k

R25
1k

C17
2.2n

R29
100k

R26
100

R27
100k

R28
51

+Vc

T11
2SK170BL

C19
100n

C18
100n

T12
2SK170BL

T16
BC547C

C22
270u

Power G
5~30V

R30
1k

R34
10M

C23
1u

C24
1u

R35
10M

R31
1k

C25
1u

Dr2
10u

T19
2SK170BL

T17
2SK170BL

┌ T3 ┌
└ 2SK3557-7 └ 2SK3557-7 └

┌ T8 ┌
└ 2SK3557-7 └ T7 └
└ 2SK3557-7 └



┌ T6 ┌
└ 2SK3666-3 └

┌ T15 ┌
└ 2SK3666-3 └



┌ T14 ┌
└ 2SK3557-7 └ T13 └
└ 2SK3557-7 └

┌ T18 ┌
└ 2SK3557-7 └ T20 └
└ 2SK3557-7 └

Designator	TYPE	Mount Type	Technology	Comment	Description	Supplier 1	Supplier Part Number 1	Quantity
C1, C25	Capacitor	TH	Ceramic MLOC	1u	TH MLOC 50V X7R 10% 5mm	Comet	CML 1.0uF 50V X7R P5	2
C2, C3, C26	Capacitor	TH	Aluminum Low ESR	1200u	25V 65mΩ 2000h/+105°C	Comet	CE 1200uF 25V LOW ESR-Fujicon	3
C4	Capacitor	TH	Ceramic Y2	1n	TH Y1 250VAC 7.5mm	Mouser	80-C907U102MZWBAP	1
C5, C22	Capacitor	TH	Aluminum Low ESR	270u	16V 0.17Ω 7000h/+105°C	Comet	CE 270uF 16V 105C LESR	2
C6, C7, C23, C24	Capacitor	TH	Polyester (PET)	1u	TH MPT 111 (TS05) 100V 10%	Comet	CP 1uF 100V MPT111/TS5	4
C8, C9, C20, C21	Capacitor	TH	Ceramic Disc	x	TH TS15 50V NP0 10% 2.5mm	Comet	CD 100pF 50V NP0	4
C10, C11, C18, C19	Capacitor	TH	Polyester (PET)	100n	TH MPT 111 (TS05) 100V 10%	Comet	CP 100nF 100V MPT111/TS5	4
C12, C15	Capacitor	TH	Polyester (PET)	33n	TH MPT 111 (TS05) 100V 10%	Comet	CP 33nF 100V MPT111/TS5	2
C13, C16	Capacitor	TH	Polyester (PET)	1n	TH MPT 111 (TS05) 100V 10%	Comet	CP 1nF 100V MPT111/TS5	2
C14, C17	Capacitor	TH	Polyester (PET)	2.2n	TH MPT 111 (TS05) 100V 10%	Comet	CP 2.2nF 100V MPT111/TS5	2
Dr1, Dr2	Axial	TH		10u	1.88Ω 0.17A D2.5x4mm	Comet	CL10uH CECS	2
K1	Wire to Board	TH		WF2S	2.54mm 3A/250V	Comet	WF2S	1
K2, K3	Wire to Board	TH		WF3S	2.54mm 3A/250V	Comet	WF3S	2
R1	Resistor	TH	Metal Film	1M	TH Metal 0.6W 1% 250V	Comet	RW6MF 1.0K 1%	1
R2, R3, R4, R5, R32, R33, R34, R35	Resistor	TH	Metal Film	10M	TH Metal 0.6W 1% 250V	Comet	RW6MF 1.0K 1%	8
R6, R7, R12, R16, R21, R25, R30, R31	Resistor	TH	Metal Film	1k	TH Metal 0.6W 1% 250V	Comet	RW6MF 1.0K 1%	8
R8, R11, R19, R28	Resistor	TH	Metal Film	51	TH Metal 0.6W 1% 250V	Comet	RW6MF 1.0K 1%	4
R9, R18, R27, R29	Resistor	TH	Metal Film	100K	TH Metal 0.6W 1% 250V	Comet	RW6MF 1.0K 1%	4
R10, R20	Resistor	TH	Metal Film	47k	TH Metal 0.6W 1% 250V	Comet	RW6MF 1.0K 1%	2
R13, R22	Resistor	TH	Metal Film	3.16k	TH Metal 0.6W 1% 250V	Comet	RW6MF 1.0K 1%	2
R14, R23	Resistor	TH	Metal Film	27k	TH Metal 0.6W 1% 250V	Comet	RW6MF 1.0K 1%	2
R15, R24	Resistor	TH	Metal Film	330k	TH Metal 0.6W 1% 250V	Comet	RW6MF 1.0K 1%	2
R17, R26	Resistor	TH	Metal Film	100	TH Metal 0.6W 1% 250V	Comet	RW6MF 1.0K 1%	2
T1, T3, T7, T8, T13, T14, T18, T20	JFET	SMT	n	2SK3557-7	16-32mA 35mS 2.9p 1dB 15V	Mouser	863-2SK3557-6-TB-E	8
T2, T4, T9, T10, T11, T12, T17, T19	JFET	TH	n	2SK170BL	6-12mA 22mS 6p 1.5dB 40V			8
T5, T16	BJT <250V	TH	npn	BC547C	45V 0.1A 300MHz 3.5pF/10V	Mouser	BC547C	2
T6, T15	JFET	SMT	n	2SK3666-3	1.2-3mA 3-6.5mS 1.1p 30V	Mouser	863-2SK3666-3-TB-E	2