

FS = 44100.00 Hz

TS = 1.486 s

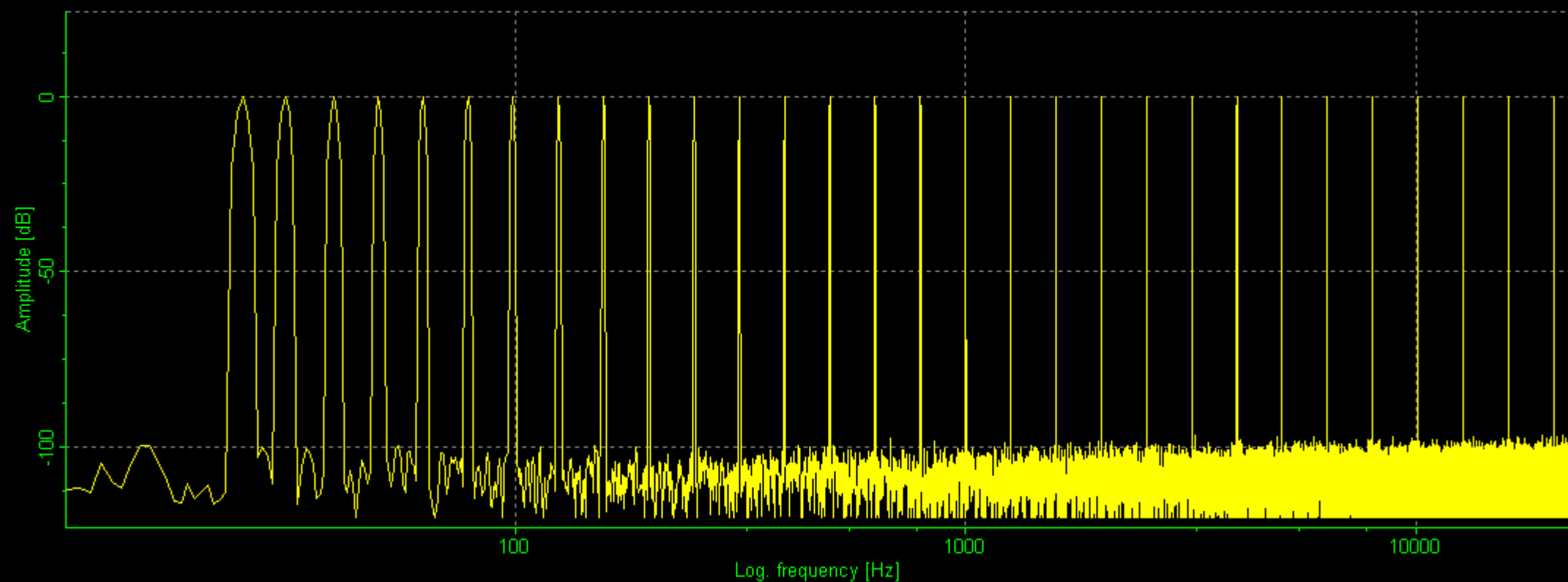
RES = 0.67 Hz/lin

AVG = 1

%THD = 0E+0

Frequency spectrum

X: 9.226E+00 Y: 3.151E+01



FS = 48000.00 Hz

TS = 1.365 s

RES = 0.73 Hz/lin

AVG = 1

%THD = 0E+0

Frequency spectrum

X: 2.704E+01 Y: -4.440E+01

