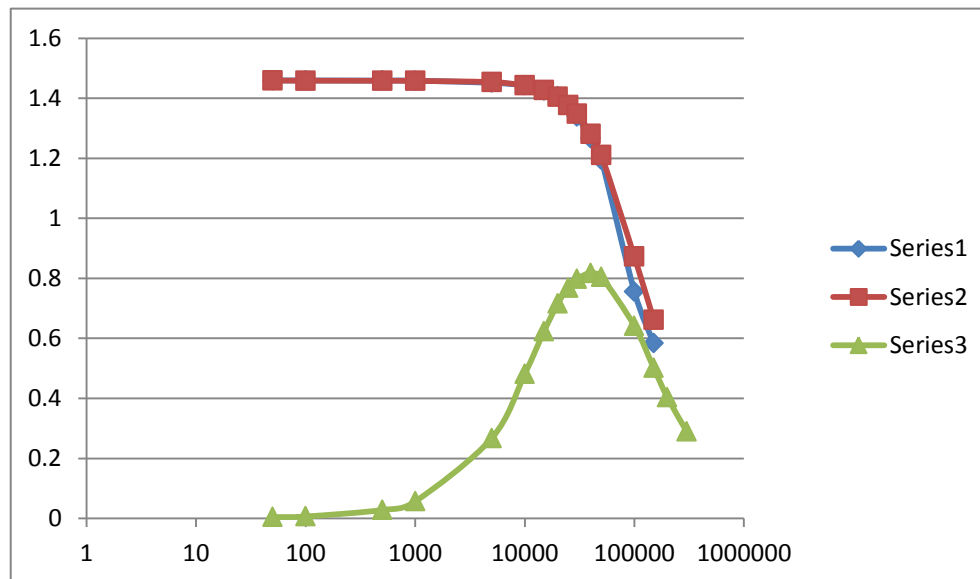


frequency Hz's	voltage bottom L resistor	voltage bottom R resistor	Volt Meter Output	Calculated delta L-R	Input Voltage ac	All Resistors Dale 1% 100K Ohms
50	1.45953	1.45879	0.004562	0.00074	3.07	
100	1.45937	1.45866	0.006675	0.00071		
500	1.45889	1.45824	0.02817	0.00065		
1000	1.45856	1.45788	0.056938	0.00068		
5000	1.4514	1.4537	0.267613	-0.0023		
10000	1.4428	1.44292	0.481644	-0.00012		
15000	1.42471	1.42715	0.623776	-0.00244		
20000	1.40589	1.40487	0.716175	0.00102		
25000	1.37182	1.37715	0.768551	-0.00533		
30000	1.33921	1.34804	0.798248	-0.00883		
40000	1.26654	1.2812	0.817992	-0.01466		
50000	1.19498	1.21036	0.804498	-0.01538		
100000	0.756	0.872568	0.641723	-0.11657		
150000	0.5845	0.662306	0.501866	-0.07781		
200000			0.403868			
300000			0.290042			



Series 1 is voltage across R4

Series 1 is voltage across R3

Series 3 is volt meter voltage at bridge output