
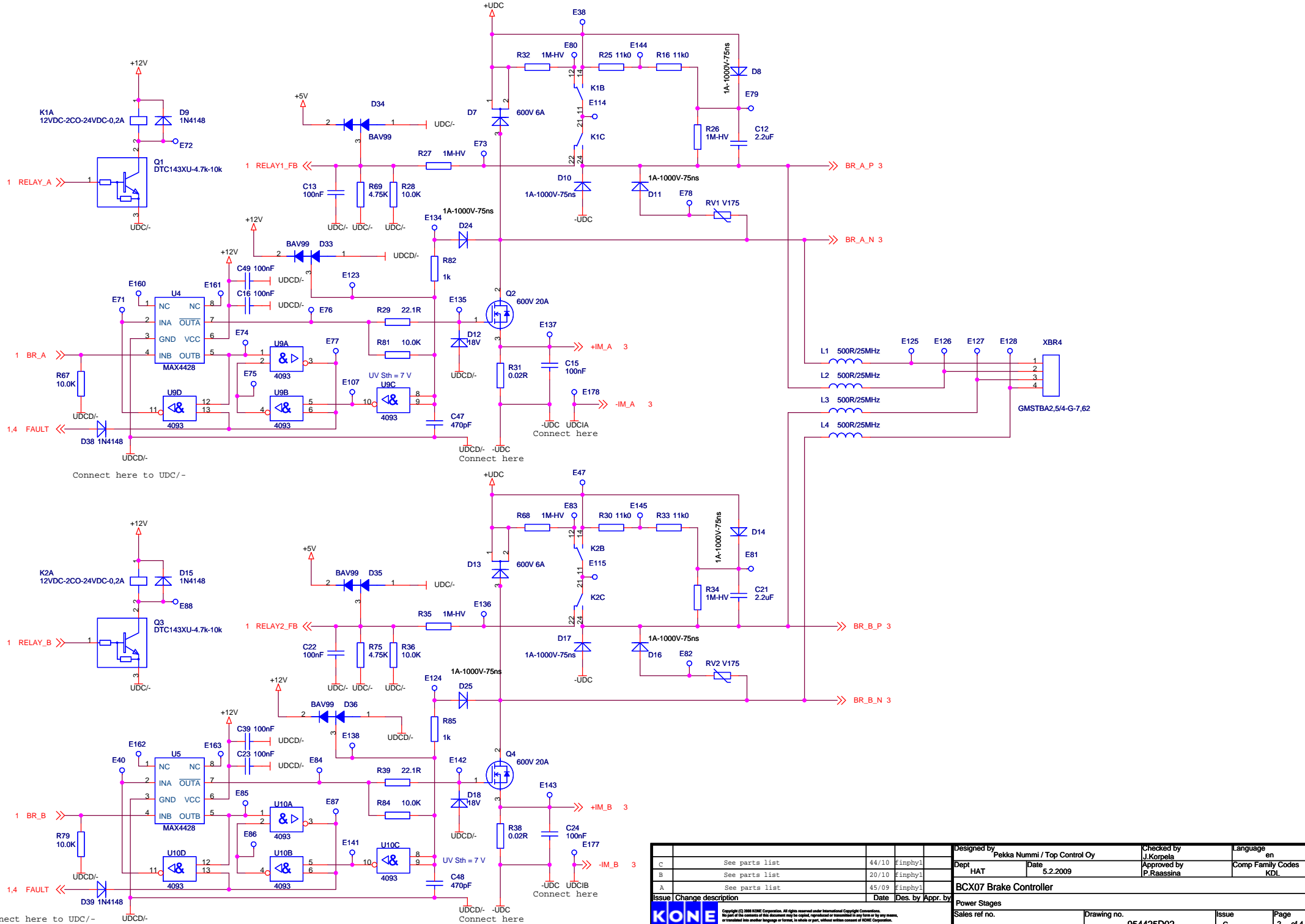


$A = \frac{1}{17,337}$
 $3,271V$

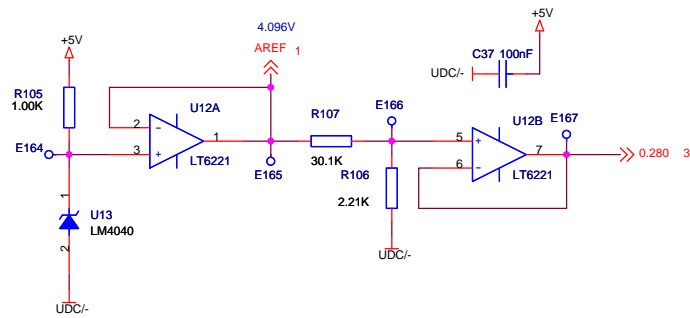
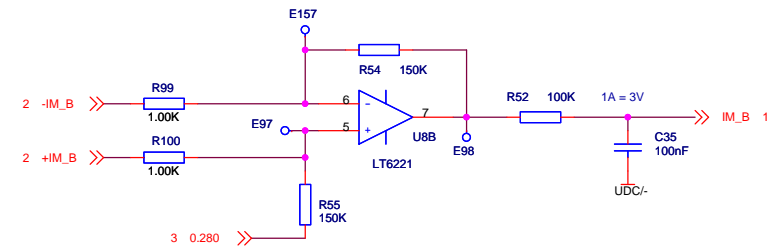
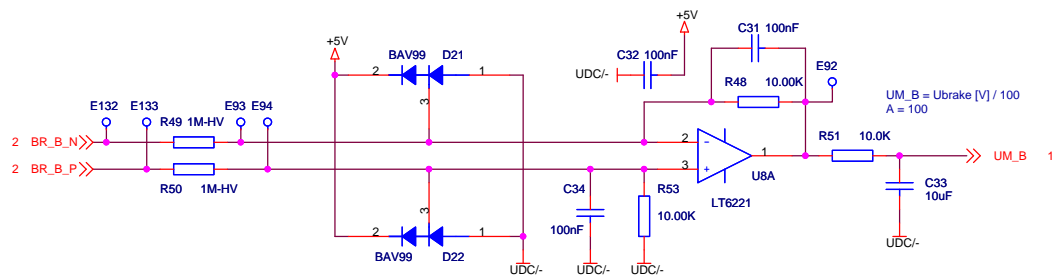
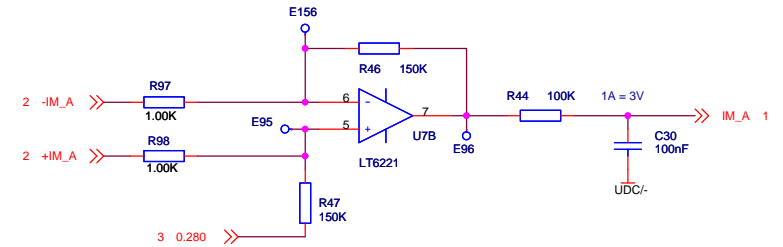
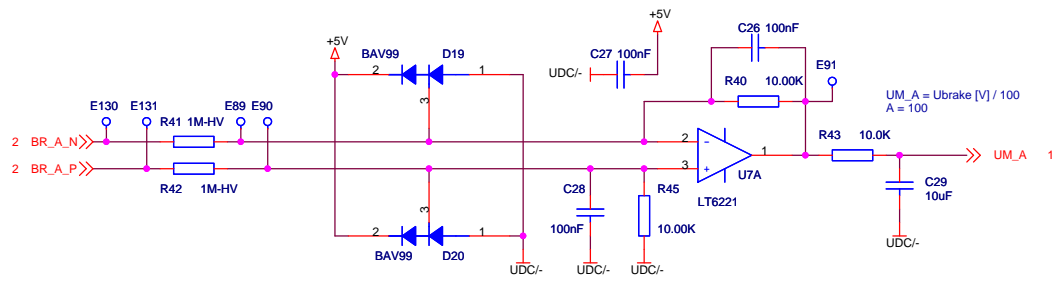
				Designed by Pekka Nummi / Top Control Oy		Checked by J.Korpela		Language en					
C		See parts list	44/10	finphy1		Dept HAT		Date 5.2.2009		Approved by P.Raassina		Comp Family Codes KDL	
B		See parts list	20/10	finphy1									
A		See parts list	45/09	finphy1									
Issue Change description				Date		Des. by		Appr. by					
				<small>Copyright (C) 2008 KONE Corporation. All rights reserved under International Copyright Conventions. No part of the contents of this document may be copied, reproduced or transmitted in any form or by any means, or translated into another language or format, in whole or part, without written consent of KONE Corporation.</small>									
				Controller & Drive interface & Logic powers									
Sales ref no.				Drawing no.				Issue C		Page 1 of 4			
				954425D02									



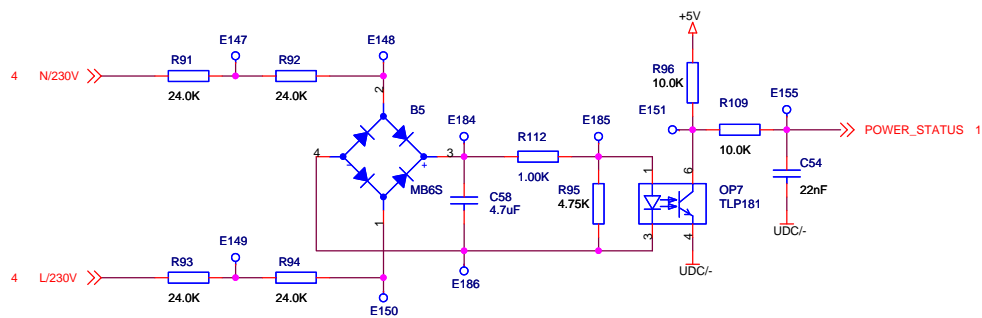
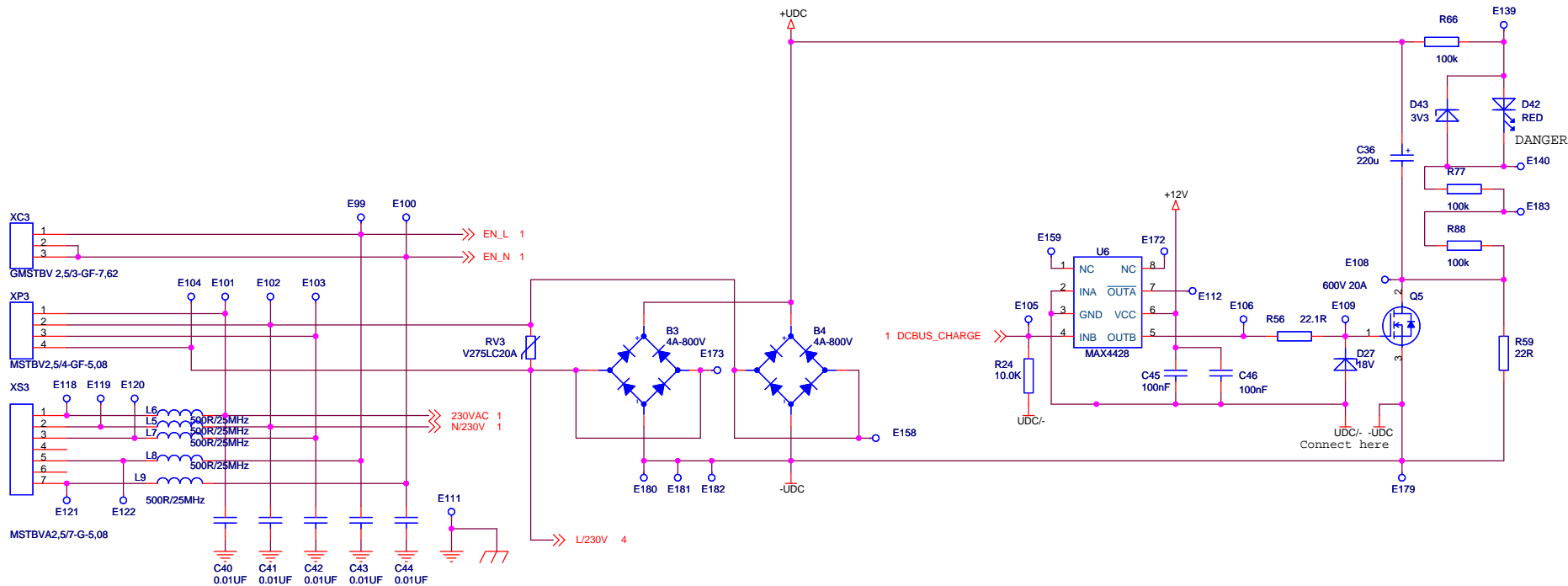
Designed by Pekka Nummi / Top Control Oy				Checked by J.Korpela		Language en	
Dept HAT		Date 5.2.2009		Approved by P.Rassina		Comp Family Codes KDL	
BCX07 Brake Controller							
Power Stages							
Sales ref no.				Drawing no. 954425D02		Issue C	Page 2 of 4




Copyright (C) 2008 KONE Corporation. All rights reserved under International Copyright Conventions.
No part of the contents of this document may be copied, reproduced or transmitted in any form or by any means,
or translated into another language or format, in whole or part, without written consent of KONE Corporation.



						Designed by	Pekka Nummi / Top Control Oy		Checked by	J.Korpela		Language	en			
C	See parts list	44/10	Finphy1			Dept	HAT		Date	5.2.2009		Approved by	P.Raassina			
B	See parts list	20/10	Finphy1												Comp Family Codes	KDL
A	See parts list	45/09	Finphy1													
Issue / Change description						Date	Des. by	Appr. by								
						BCX07 Brake Controller										
						Current & Voltage measurement circuits										
KONE						Sales ref. no.			Drawing no.			Issue		Page		
									954425D02			C		3 of 4		



Designed by Pekka Nummi / Top Control Oy				Checked by J.Korpela		Language en			
C See parts list		44/10	Finphyl	Date 5.2.2009		Approved by P.Raassina		Comp Family Codes KDL	
B See parts list		20/10	Finphyl						
A See parts list		45/09	Finphyl						
Issue Change description				Date		Des. by		Appr. by	
 <small>Copyright © 2008 KONE Corporation. All rights reserved under International Copyright Laws. Reproduction of this document or any of its contents may be copied, reprinted or transmitted in any form or by any means, electronic or mechanical, including photocopying, recording, or by any information storage and retrieval system, without written permission of KONE Corporation.</small>				BCX07 Brake Controller					
				230VAC Supply & DC-bus					
				Sales ref no.					
				Drawing no.					
				954425D02					
				Issue C		Page 4		of 4	