

## Bill of Materials

-----

Report Written : Sunday, May 17, 2009  
 Design Path : E:\Audio Files\My Designs\Power Amps\RAS60 MOSFET\RAS35S MOS.pcb  
 Design Title :  
 Created : 2008/11/22 11:10:18 PM  
 Last Saved : 2009/05/17 08:18:52 PM  
 Editing Time : 834 min  
 Units : mm (precision 1)

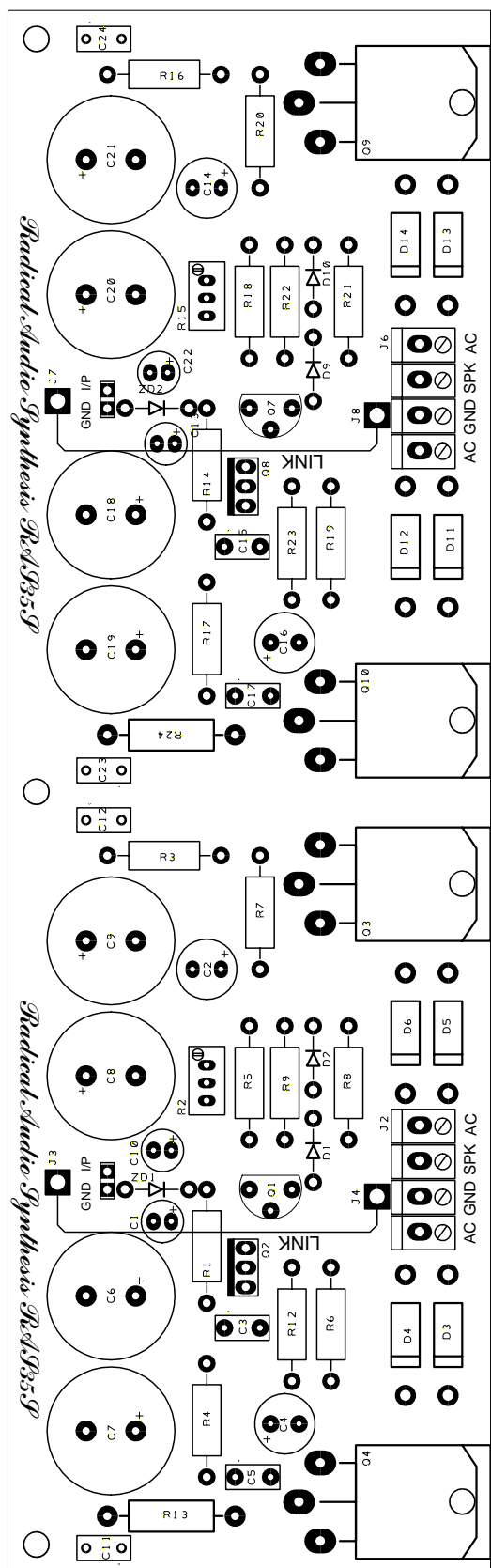
Component	Value	Qty
-----		
1K0		2
1K2		2
1N4007		4
1N5404		8
2 Way Pin		2
2SC2240		2
2SJ162		2
2SK1058		2
5K 10T		2
6K8		4
10E		2
10u		4
22K		2
22p		2
33K		2
56E		2
100n		6
100u		2
470E		4
470u		2
4700u		8
8191-4		2
BD140 (V)		2
Pad		4
ZD 5v1		2
-----		76

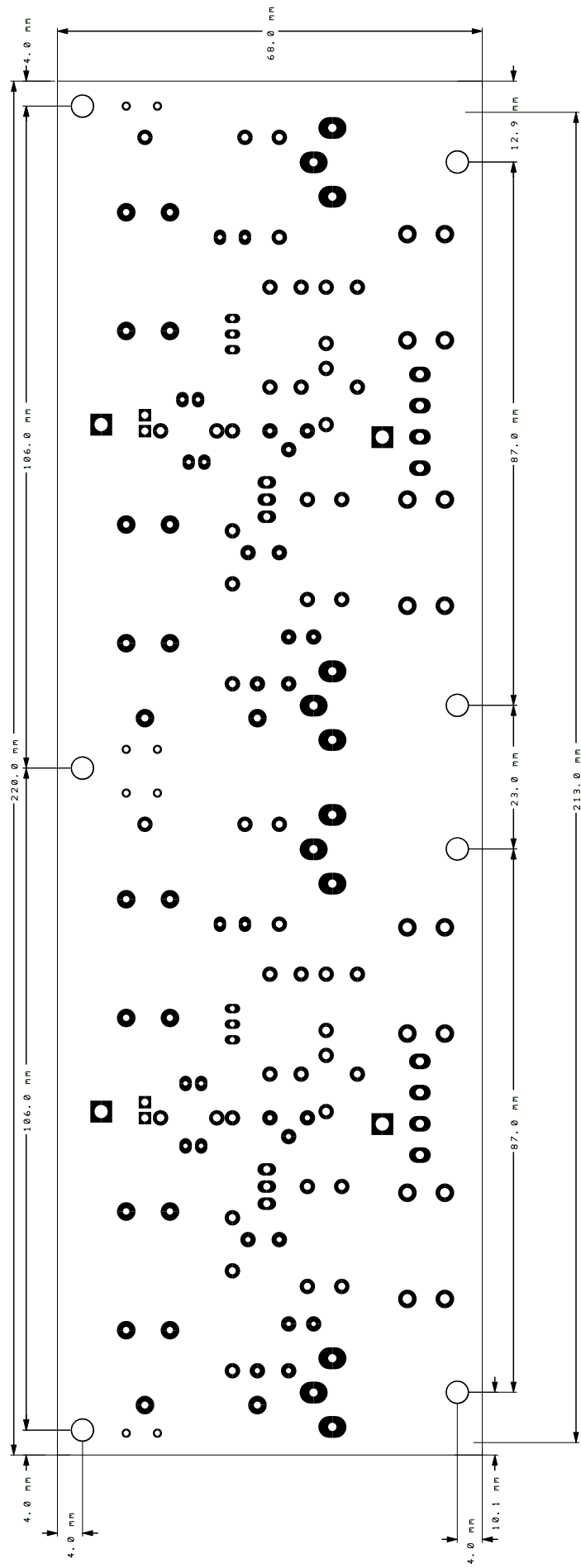
## RAS35S MOS. I sp

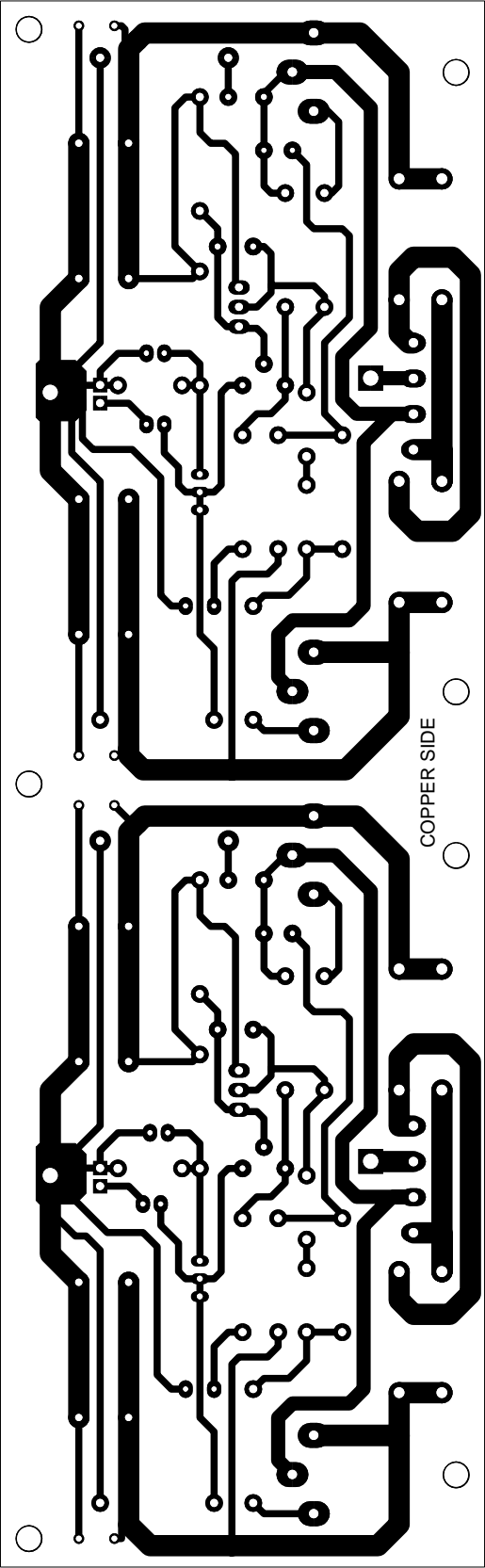
REF	NAME	DESCRIPTION	QNTY
C5 C11 C12 C17 C23 C24	100n	Capaci tor Cerm 50V	6
C4 C16	100u	Capaci tor Elec Radi al	2
R13 R24	10E	Resi stor	2
C1 C10 C13 C22	10u	Capaci tor Elec Radi al	4
R4 R17	1K0	Resi stor	2
R12 R23	1K2	Resi stor	2
D1 D2 D9 D10	1N4007		4
D3 D4 D5 D6 D11 D12 D13 D14	1N5404		8
J1 J5	2 Way Pin		2
R1 R14	22K	Resi stor	2
C3 C15	22p		2
Q1 Q7	2SC2240		2
Q3 Q9	2SJ162		2
Q4 Q10	2SK1058		2
R3 R16	33K	Resi stor	2
C6 C7 C8 C9 C18 C19 C20 C21	4700u	Capaci tor Elec Radi al	8
R6	470E	Resi stor	4

R7  
R19  
R20

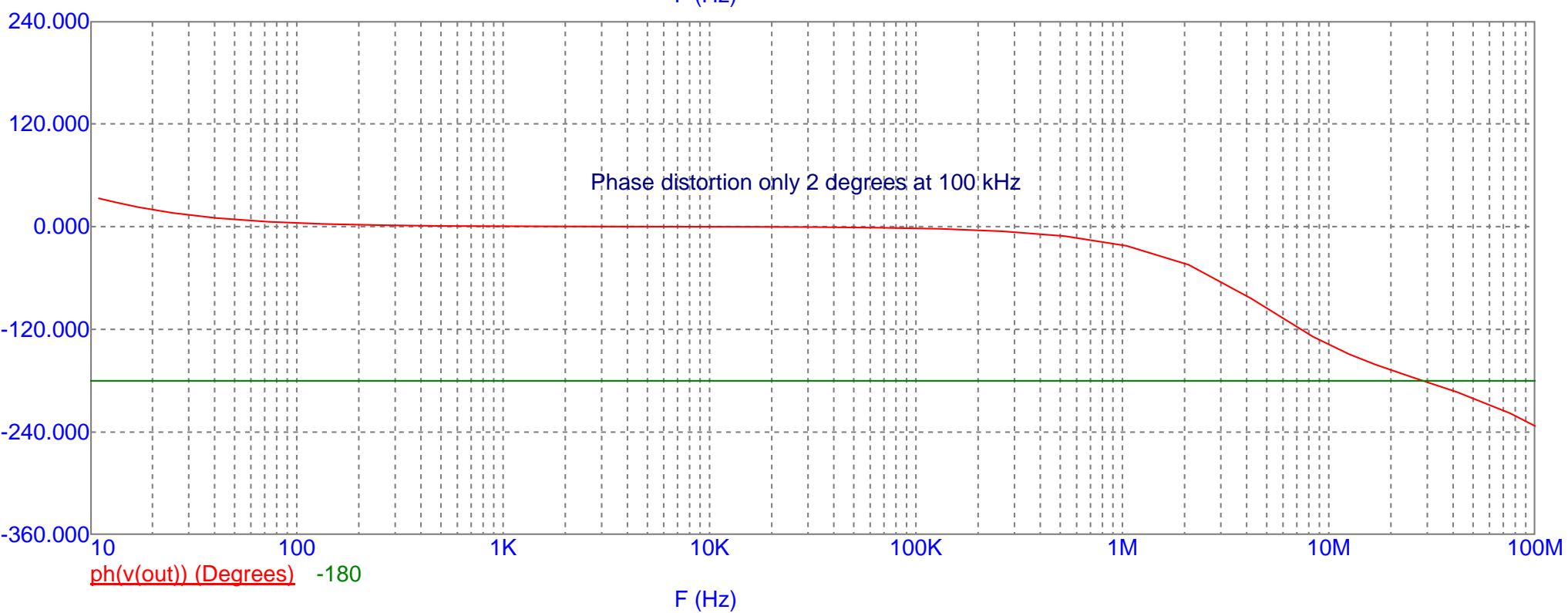
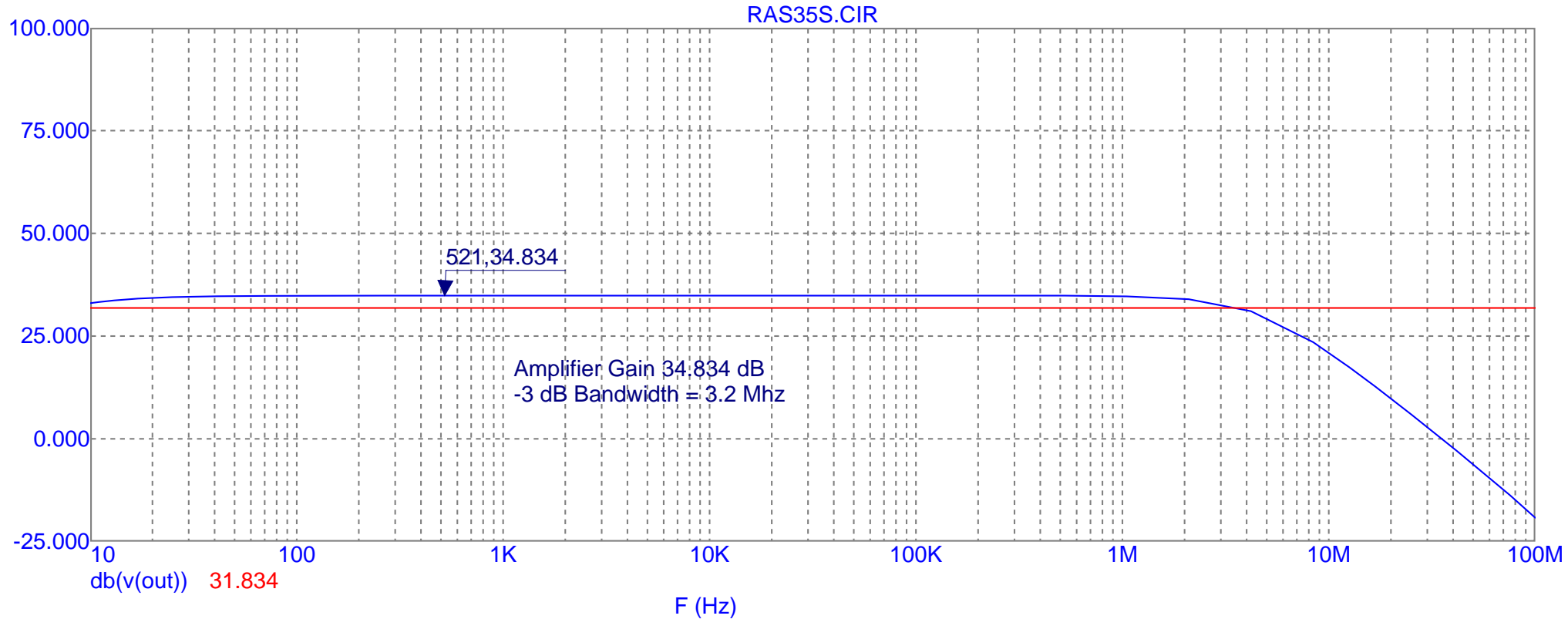
C2 C14	470u	Capaci tor El ectr Radial	2
R5 R18	56E	Resi stor	2
R2 R15	5K 10T		2
R8 R9 R21 R22	6K8	Resi stor	4
J2 J6	8191-4		2
Q2 Q8	BD140 (V)		2
J3 J4 J7 J8	Pad		4
ZD1 ZD2	ZD 5v1		2



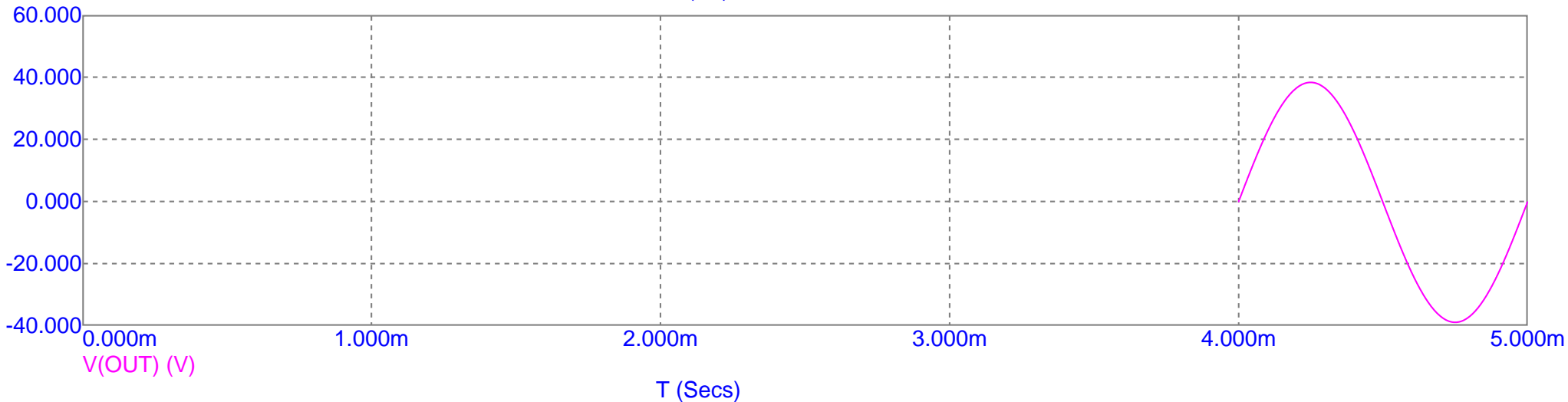
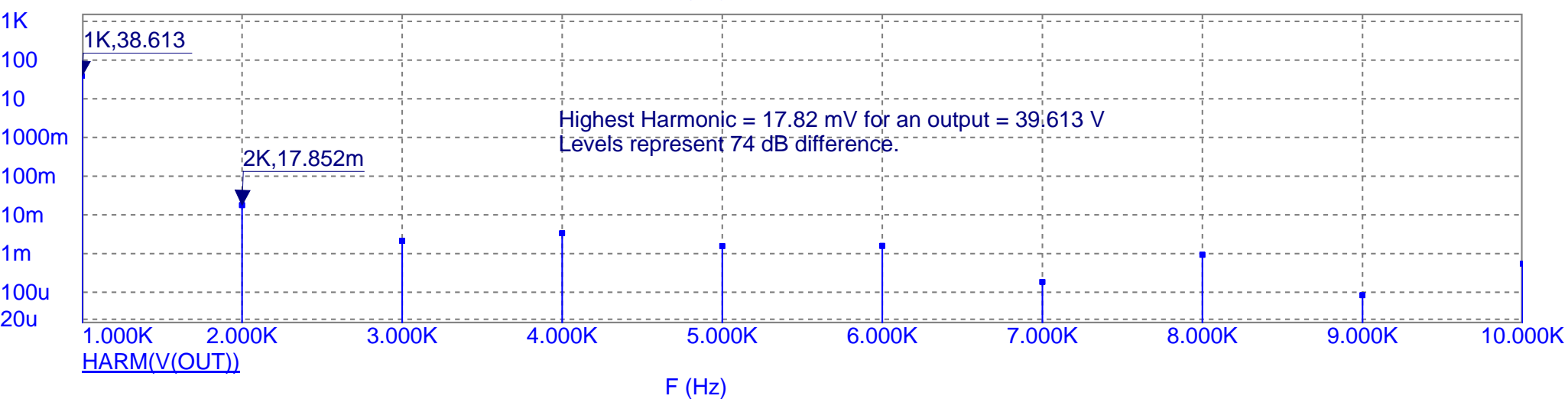
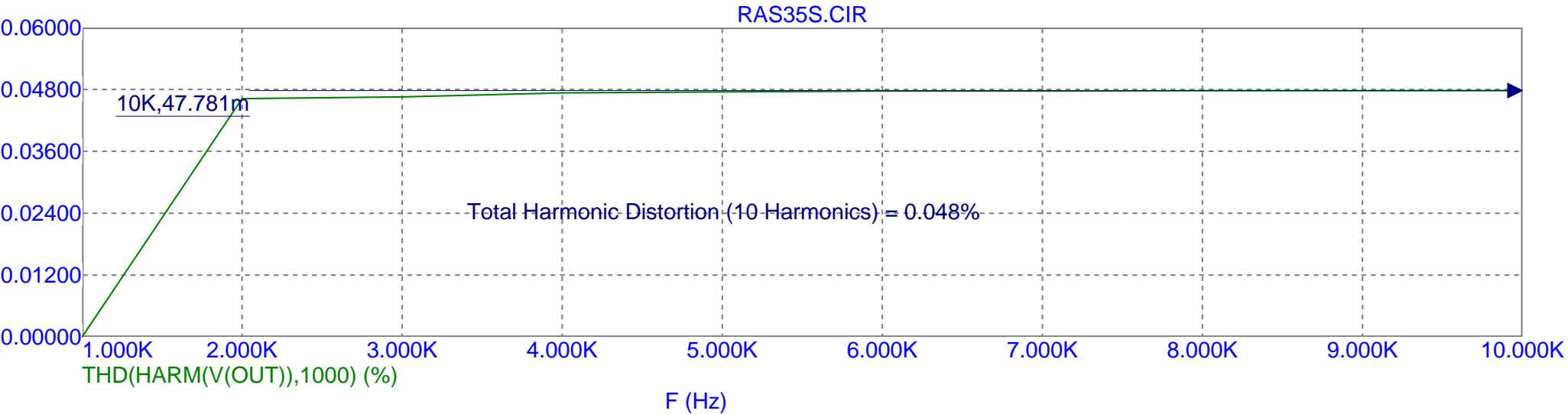


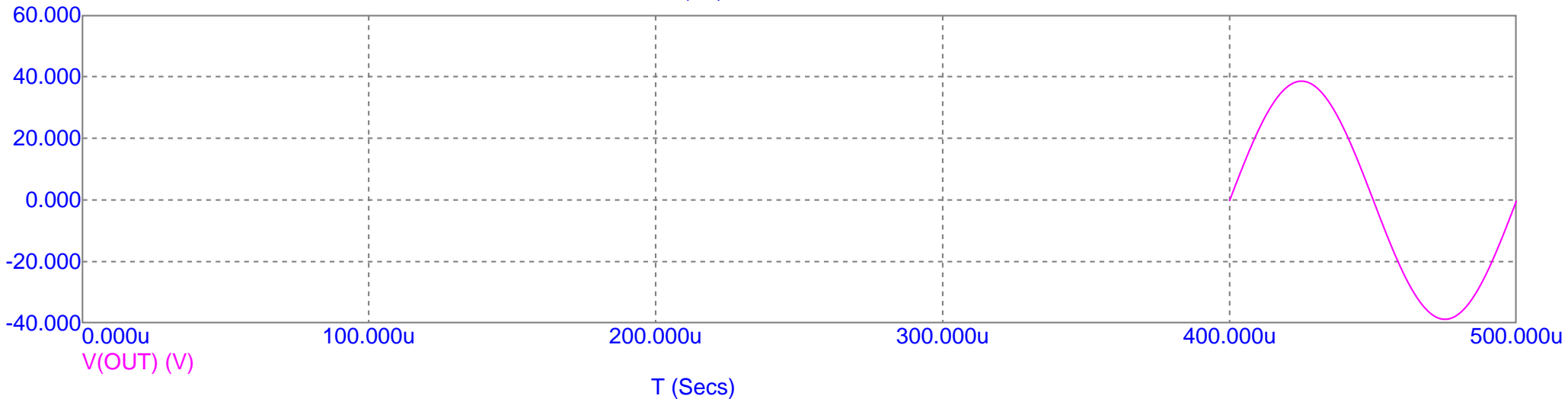
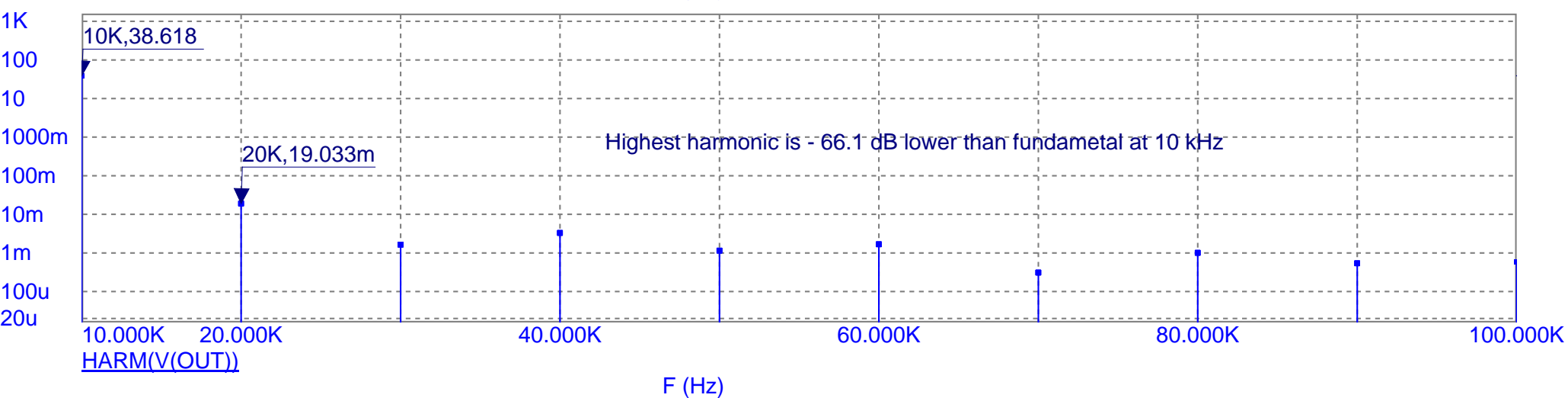
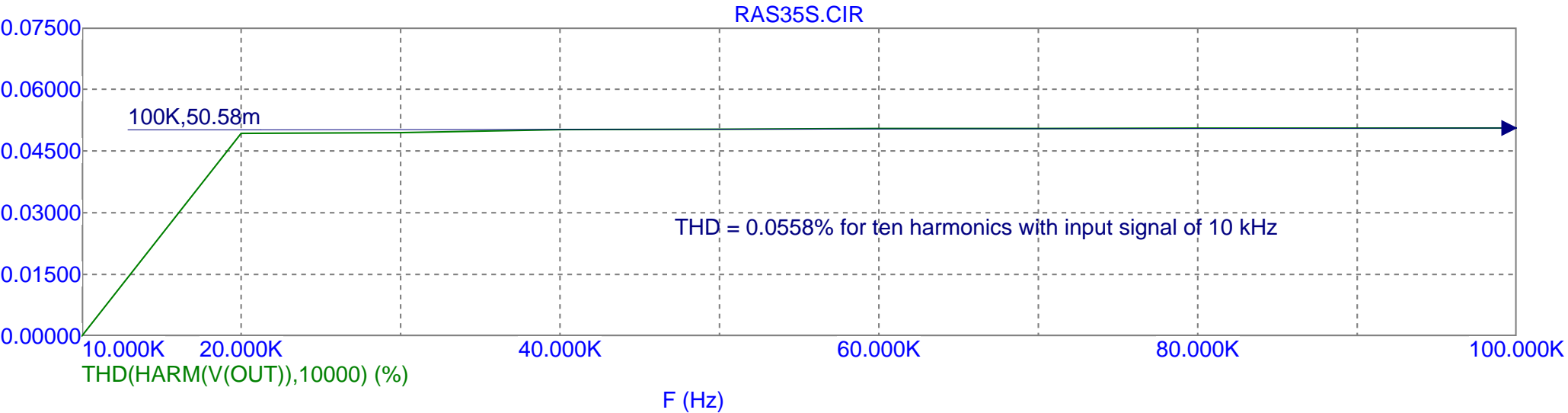


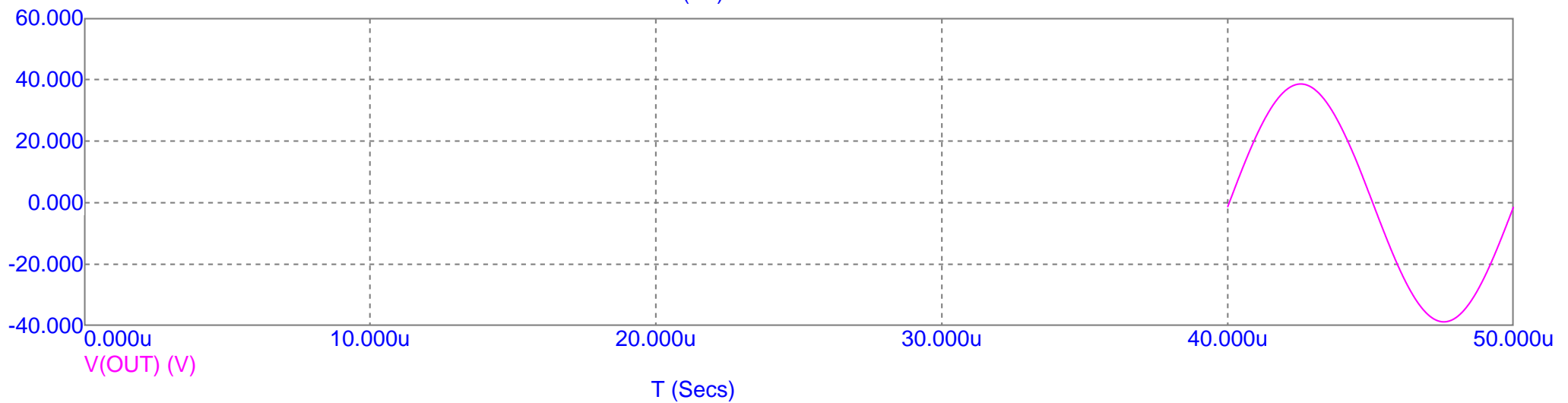
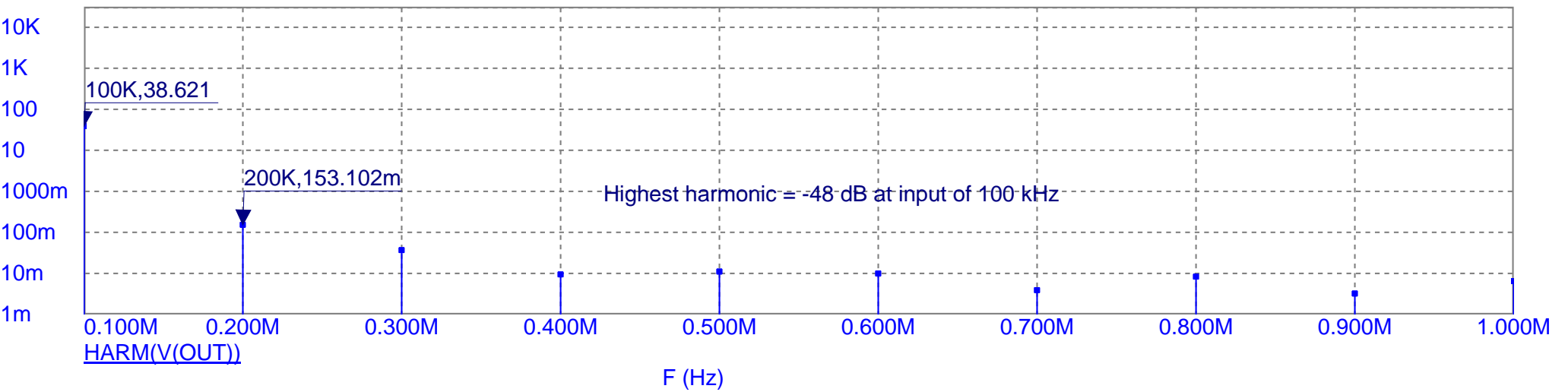
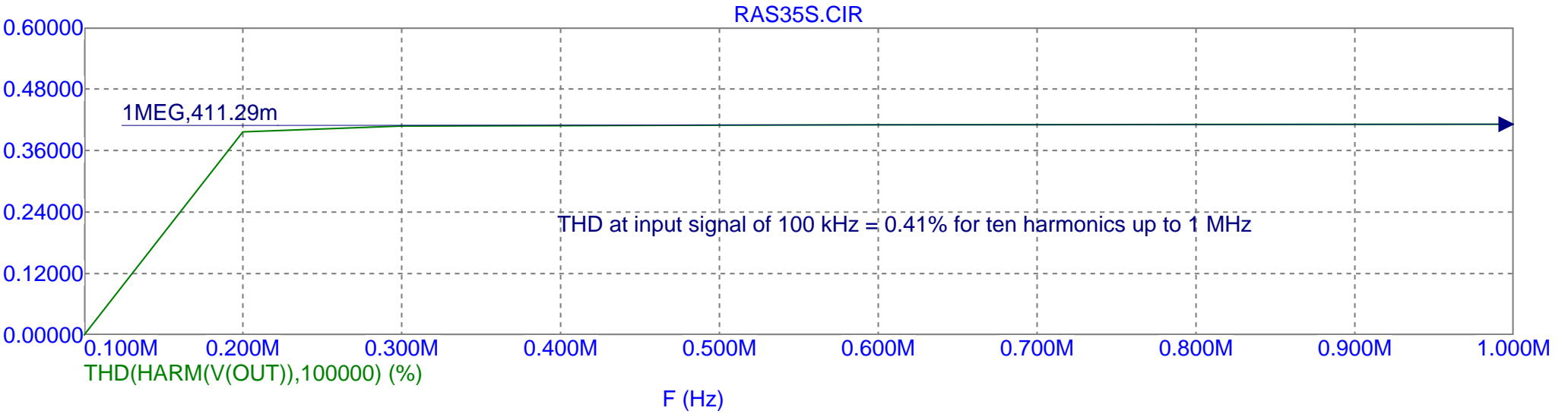
# RAS35S.CIR











RAS35S.CIR

