
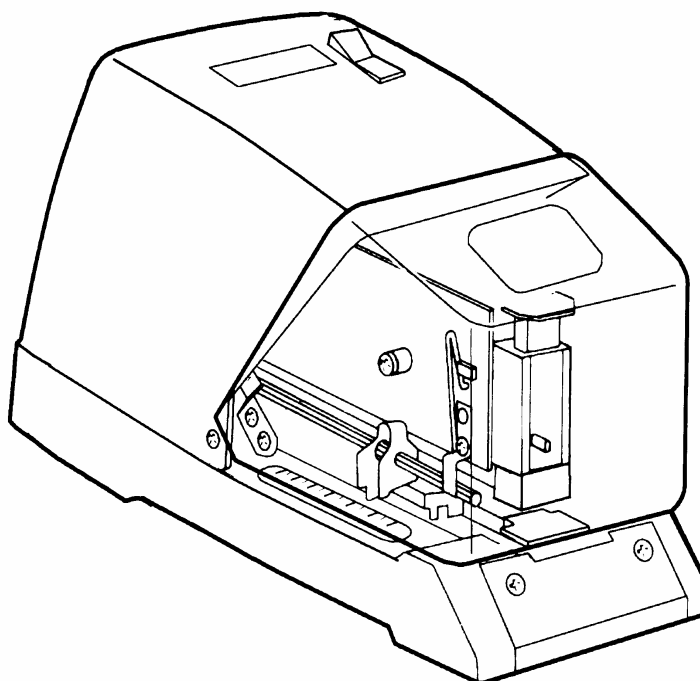


Rapid 		SPARE PARTS LIST				
Reg. By kele	Appr. By peto	Appr. Date 2004-03-04	Page 1(8)	Class 053	No. 195578	Rev. 09
Info		Product name RAPID 100E / 101E				



Pos No	Part No	Part Name	Qty
215	156810	Connection terminal	1
224	127134	Cord grip	2
253	127118	Rubber washer	1
254	127100	Distance nut	1
255	126623	Screw	1
264	12746403	Front Plate	1
267	145987	Foot	4
282	14081410	Bar support	1
292	179010	Bearing from serial No: A100E: 71695-, A101E: 46073-	2
305	128397	Bolt	2
306	155457	Lock ring	2
312	182298	Gusset	2
313	167029	Screw	2
316	156398	Foot	4
321	128181	Plate	4
325	14672010	Anvil	1
326	12861110	Anvil support	1
327	167052	Washer	1
328	154930	Screw	1
329	155341	Nut	1
330	128561	Bar, left	1
331	128579	Bar, right	1
332	128538	Paper gauge	2


When ordering always state the part numbers. For electric parts also voltage.

Head office and factory: ISABERG RAPID AB, Box 115, S-330 27 Hestra, Sweden

Telephone 46-(0)370-33 95 00. Telefax 46-(0)370-33 95 02.

Internet www.isaberg-rapid.com

EDNord - Istedgade 37A - 9000 Aalborg - telefon 96333500

Rapid 		SPARE PARTS LIST				
Reg. By kele	Appr. By peto	Appr. Date 2004-03-04	Page 2(8)	Class 053	No. 195578	Rev. 09
Info		Product name RAPID 100E / 101E				

333	156273	Fixing knob nut	1
334	162032	Screw	1
335	128546	Clamp	1
336	167033	Screw	2
352	162057	Screw	4
353	146746	Table	1
354	146530	Arrester	1
510	12849610	Guide pin 44/8	1
511	12850410	Guide pin 66/8	1
512	156406	Hexagon wrench 4 mm	1
525	146423	Cover	1
526-1	14643101	Foot control box, 200V-240V	1
526-2	14643103	Foot control box, 100V-125V	1
527	162420	Screw	2
601	14550807	Housing white	1
602	14524310	Holder	1
611	145961	Damper	1
612	133082	Washer	1
613	14544110	Holder	1
614	14535902	Base	1
615	14675301	Sight shield unit	1
616	145672	Sight shield spring	1
617	14510210	Bearing bracket	2
618-1	162644	Switch 200V-240V	1
618-2	162677	Switch 100V-125V	1
619	145250	Bracket	1
620	145060	Pin	1
625-1	162768	Glass tube fuse 5A (100V-125V)	1
625-2	162826	Glass tube fuse 2A ø6x32 (200V-240V)	1
625-3	146985	Glass tube fuse 2A ø5x20 (200V-240V)	1
626	145029	Impact control	1
629	145367	Spring	2
630-1	14537501	Rocker, sight shield	1
630-2	14537502	Rocker, trigger	1
631	145268	Pin	1
632	14523510	Angle	1
633	145334	Arrester	1
634	145896	Manoeuvring rod	1
635	145342	Hanger	2
636	145011	Frame, control unit	1
641	145979	Sealing	1
642	145797	Double actuator	1
651	167035	Screw	1
652	167037	Screw	5


When ordering always state the part numbers. For electric parts also voltage.

Head office and factory: ISABERG RAPID AB, Box 115, S-330 27 Hestra, Sweden

Telephone 46-(0)370-33 95 00. Telefax 46-(0)370-33 95 02.

Internet www.isaberg-rapid.com

EDNord - Istedgade 37A - 9000 Aalborg - telefon 96333500

Rapid 		SPARE PARTS LIST				
Reg. By kele	Appr. By peto	Appr. Date 2004-03-04	Page 3(8)	Class 053	No. 195578	Rev. 09
Info		Product name RAPID 100E / 101E				

654	167029	Screw	10
655	227823	Screw	1
657	167038	Screw	2
658	154096	Screw	1
659	167039	Screw	2
660	154062	Screw	1
661	167043	Screw	1
662	167027	Screw	4
663	14631604	Base	1
664	146381	Fixing knob screw	1
665	128595	Washer	1
666	167036	Screw	2
667	10833222	Insert stapler Rapid A2EI-101E 66/8, see page 6	1
668	10833221	Insert stapler Rapid A2EI-101E 44/8, see page 6	1
671	155168	Washer	1
672	155101	Lock Washer	1
673	155259	Washer	1
675	155440	Lock Ring	6
676	155465	Lock Ring	1
677	10834022	Insert stapler Rapid A2EI-101E 66/8, see page 7	1
678	10834021	Insert stapler Rapid A2EI-101E 44/8, see page 7	1
690-1	14522701	Magnet complete incl piston 220V-230V	1
690-2	14522702	Magnet complete incl piston 240V	1
690-3	14522703	Magnet complete incl piston 115V	1
690-4	14522704	Magnet complete incl piston 100V	1
691	146761	Sight shield complete (contains the following parts: 253,254,255,615,616,617,654,655,671	1
693-1	14830401	100V-120V Control circuit complete (625,626)	1
693-2	14830402	200V-230V Control circuit coml. 625, 626)	1
695	179036	Stapling arm complete from serial No A100E: 71695-, A101E: 46073-	1
696-1	14546601	Insulating tube + connection wire 100V-220V	1
696-2	14546602	Insulating tube + connection wire 200V-240V	1

When ordering always state the part numbers. For electric parts also voltage.

Head office and factory: ISABERG RAPID AB, Box 115, S-330 27 Hestra, Sweden

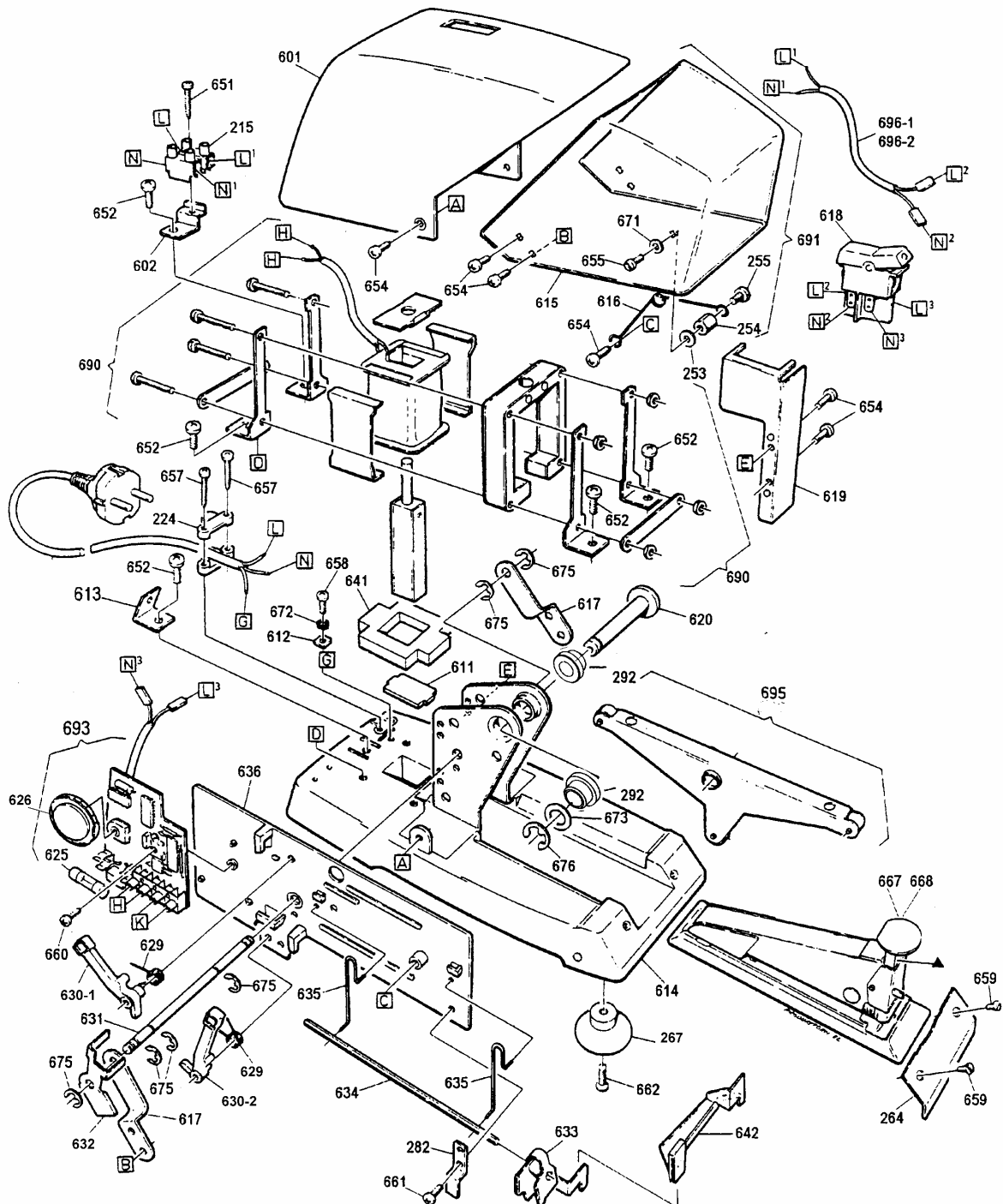
Telephone 46-(0)370-33 95 00. Telefax 46-(0)370-33 95 02.

Internet www.isaberg-rapid.com

EDNord - Istedgade 37A - 9000 Aalborg - telefon 96333500

SPARE PARTS LIST

Reg. By kele	Appr. By peto	Appr. Date 2004-03-04	Page 4(8)	Class 053	No. 195578	Rev. 09
Info		Product name RAPID 100E / 101E				




When ordering always state the part numbers. For electric parts also voltage.

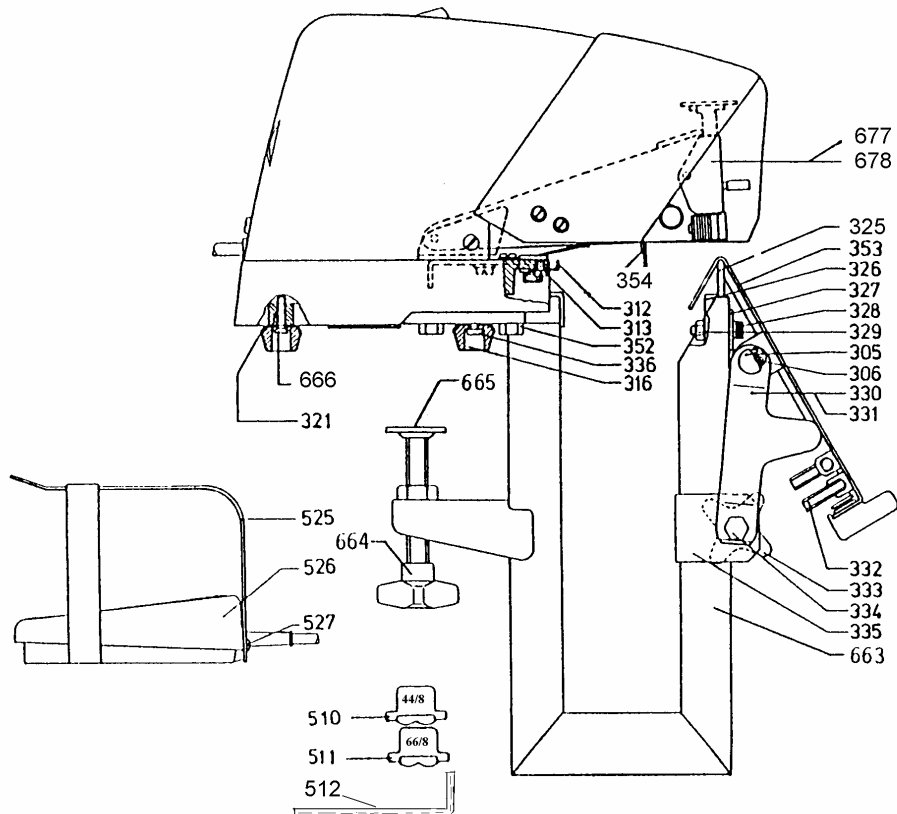
Head office and factory: ISABERG RAPID AB, Box 115, S-330 27 Hestra, Sweden

Telephone 46-(0)370-33 95 00. Telefax 46-(0)370-33 95 02.

Internet www.isaberg-rapid.com

EDNord - Istedgade 37A - 9000 Aalborg - telefon 96333500

Rapid 		SPARE PARTS LIST				
Reg. By kele	Appr. By peto	Appr. Date 2004-03-04	Page 5(8)	Class 053	No. 195578	Rev. 09
Info		Product name RAPID 100E / 101E				



When ordering always state the part numbers. For electric parts also voltage.

Head office and factory: ISABERG RAPID AB, Box 115, S-330 27 Hestra, Sweden

Telephone 46-(0)370-33 95 00. Telefax 46-(0)370-33 95 02.

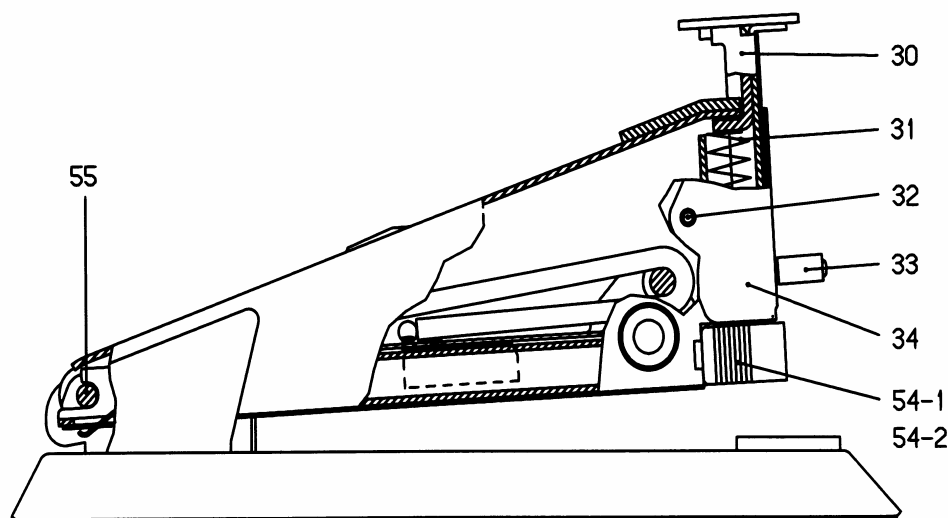
Internet www.isaberg-rapid.com

EDNord - Istedgade 37A - 9000 Aalborg - telefon 96333500

Rapid		SPARE PARTS LIST				
Reg. By kele	Appr. By peto	Appr. Date 2004-03-04	Page 6(8)	Class 053	No. 195578	Rev. 09
Info		Product name RAPID 100E / 101E				

***667 Insert stapler Rapid A2EI-100E 66/6-8 Part No 10833222**

***668 Insert stapler Rapid A2EI-100E 44/6-8 Part No 10833221**



Pos No	Part No	Name	Qty
30	12105301	Piston incl. Driver	1
31	120907	Piston spring	1
32	155648	Pin	1
33	120964	Plastic knob	1
34	12106101	Front	1
54-1	12120201	Magazine, complete, 44 staples	1
54-2	12120202	Magazine, complete, 66 staples	1
55	120923	Pin	1

Pos No see page 3 or exploded drawing


When ordering always state the part numbers. For electric parts also voltage.

Head office and factory: ISABERG RAPID AB, Box 115, S-330 27 Hestra, Sweden

Telephone 46-(0)370-33 95 00. Telefax 46-(0)370-33 95 02.

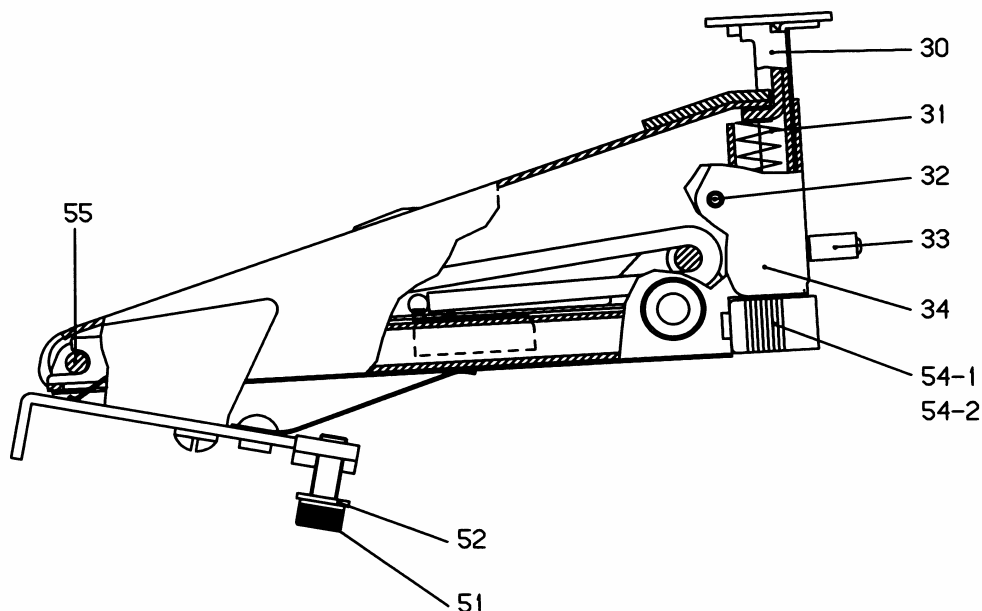
Internet www.isaberg-rapid.com

EDNord - Istedgade 37A - 9000 Aalborg - telefon 96333500

Rapid 		SPARE PARTS LIST				
Reg. By kele	Appr. By peto	Appr. Date 2004-03-04	Page 7(8)	Class 053	No. 195578	Rev. 09
Info		Product name RAPID 100E / 101E				

***677 Insert stapler Rapid A2EI-101E 66/6-8 Part No 10834022**

***678 Insert stapler Rapid A2EI-101E 44/6-8 Part No 10834021**



Pos No	Part No	Name	Qty
30	12105301	Piston incl. Driver	1
31	120907	Piston spring	1
32	155648	Pin	1
33	120964	Plastic knob	1
34	12106101	Front	1
51	154914	Screw	2
52	155226	Washer	2
54-1	12120201	Magazine, complete 44 - staples	1
54-2	12120202	Magazine, complete 66 - staples	1
55	120923	Pin	1

Pos No see page 3 or exploded drawing


When ordering always state the part numbers. For electric parts also voltage.

Head office and factory: ISABERG RAPID AB, Box 115, S-330 27 Hestra, Sweden

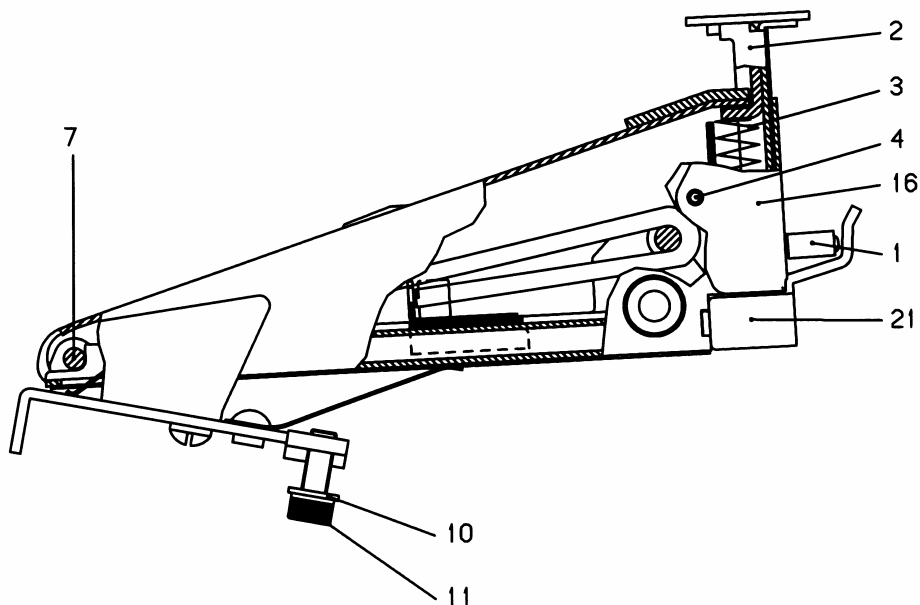
Telephone 46-(0)370-33 95 00. Telefax 46-(0)370-33 95 02.

Internet www.isaberg-rapid.com

EDNord - Istedgade 37A - 9000 Aalborg - telefon 96333500

Rapid 		SPARE PARTS LIST				
Reg. By kele	Appr. By peto	Appr. Date 2004-03-04	Page 8(8)	Class 053	No. 195578	Rev. 09
Info		Product name RAPID 100E / 101E				

Insert stapler Rapid A252-101E 66R/6



Pos No	Part No	Name	
1	120964	Plastic knob	1
2	16434301	Piston incl driver	1
3	164459	Piston spring	1
4	155648	Pin	1
7	120923	Pin	1
10	155226	Washer	2
11	154914	Screw	2
16	16441804	Front	1
21	16448302	Magazine complete 66R/6 - staples	1

When ordering always state the part numbers. For electric parts also voltage.

Head office and factory: ISABERG RAPID AB, Box 115, S-330 27 Hestra, Sweden

Telephone 46-(0)370-33 95 00. Telefax 46-(0)370-33 95 02.

Internet www.isaberg-rapid.com

EDNord - Istedgade 37A - 9000 Aalborg - telefon 96333500