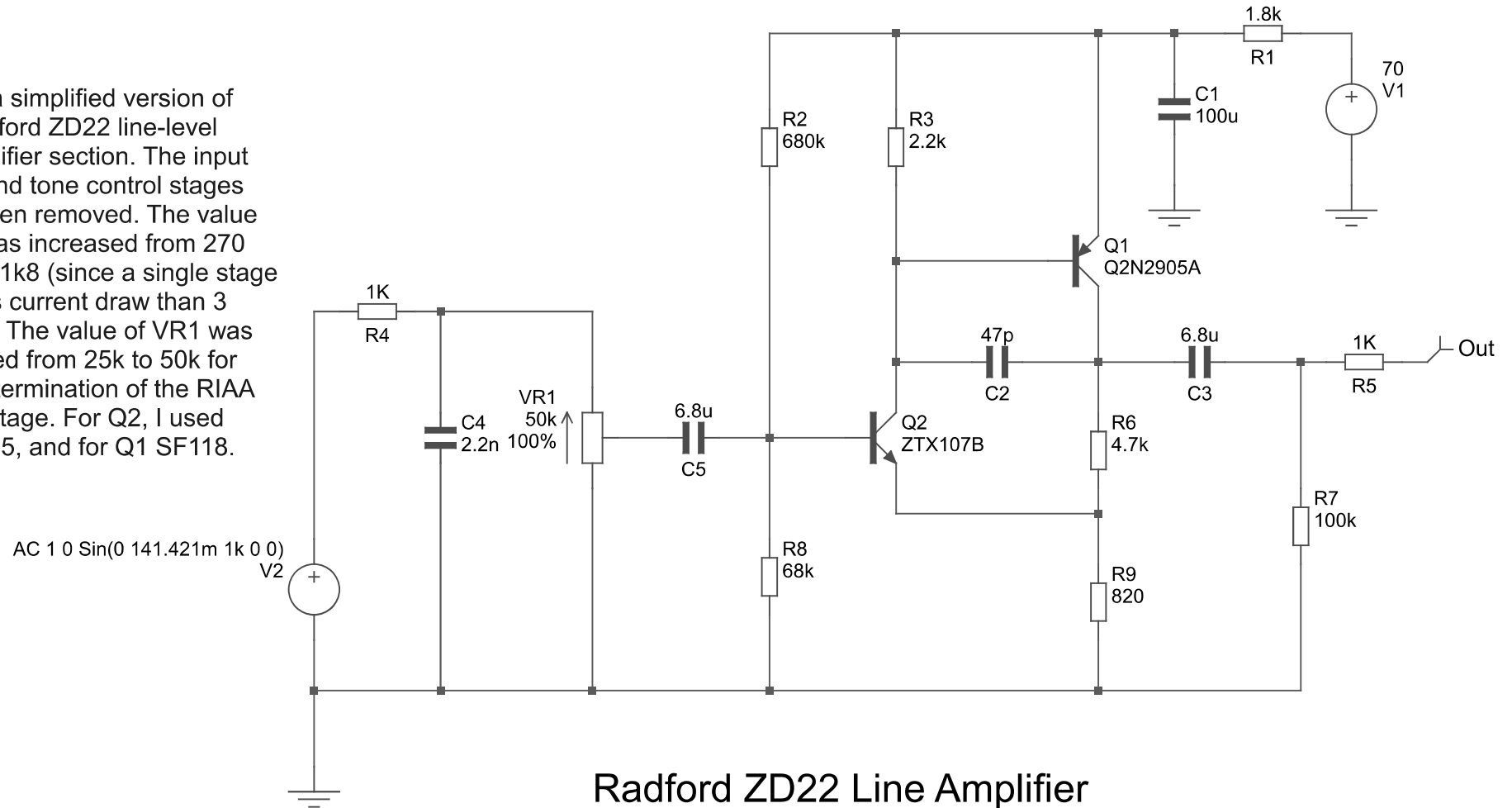


This is a simplified version of the Radford ZD22 line-level preamplifier section. The input buffer and tone control stages have been removed. The value of R6 was increased from 270 Ohm to 1k8 (since a single stage has less current draw than 3 stages). The value of VR1 was increased from 25k to 50k for correct termination of the RIAA phono stage. For Q2, I used 2SC1775, and for Q1 SF118.



C:\Users\Aren\Documents\Elements\Work\lineamp\2tor\Radford2.sxsch - 8-5-2025