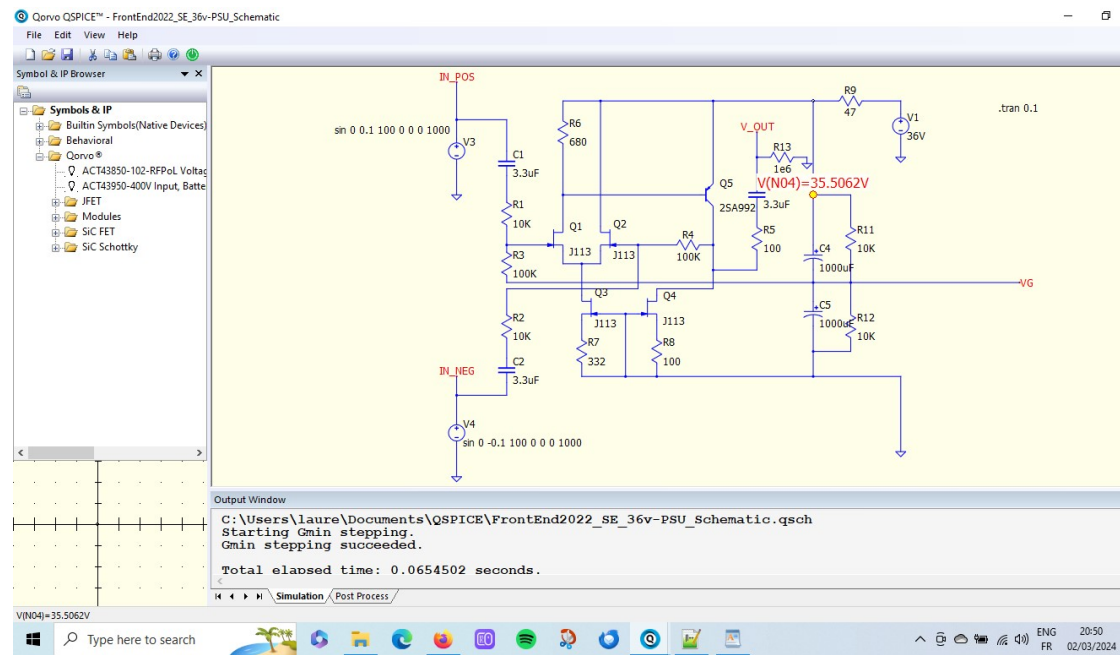
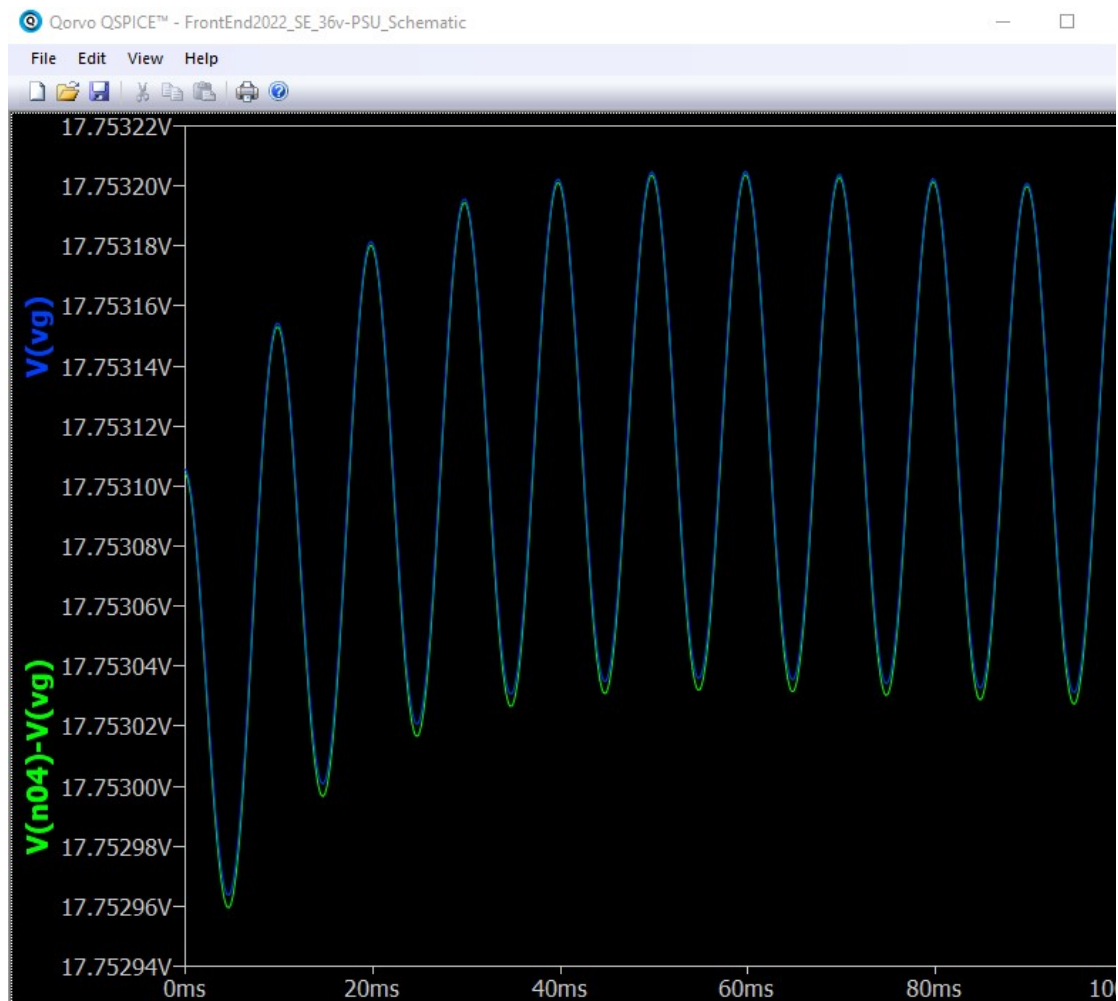


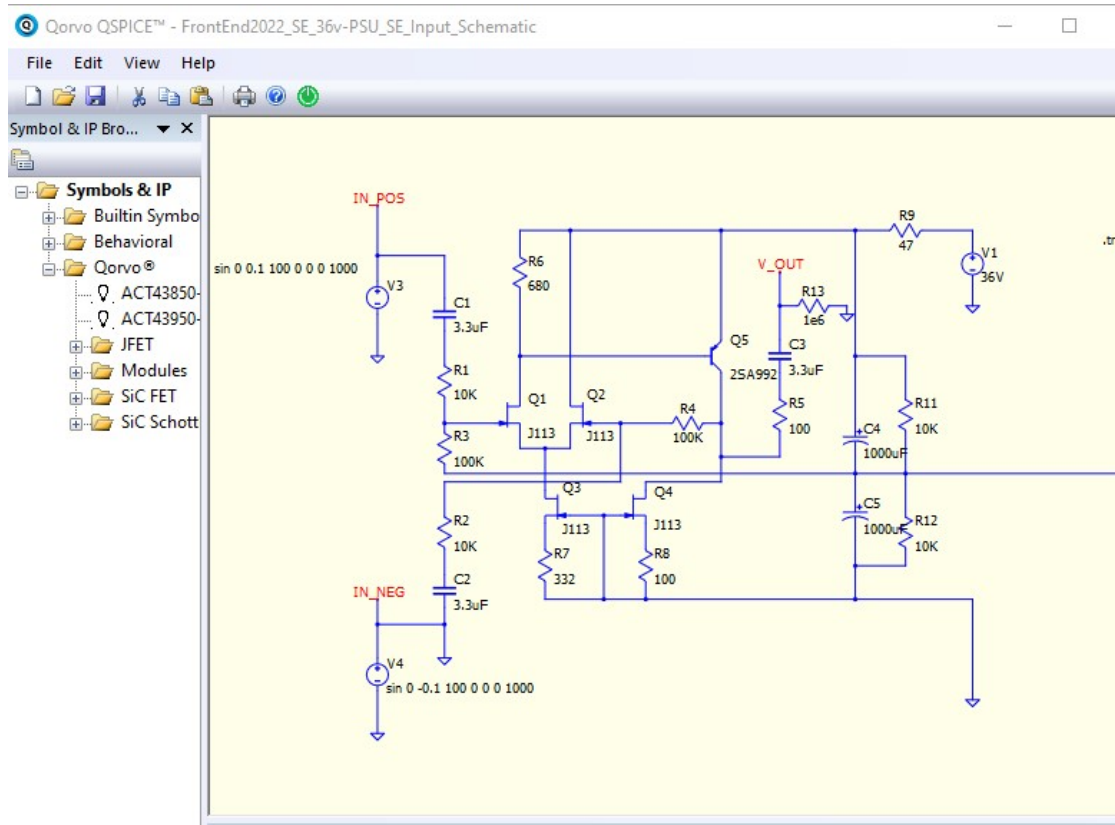
Original Schematic [with a 10^6 resistance load @output, done for convergence, Qspice forums], Dual Power Supply +/- 24V. Schematic on top, Voltage across C4 & C5 @bottom.





Single Ended +36V Power Supply[with a 10^6 resistance load @output, done for convergence, Qspice forums]. Schematic on top, Voltage across C4 & C5 @bottom. (V(N04)-V(vg) across C4, V(vg) across C5)





Single Ended +36V Power Supply[with a 10^6 resistance load @output, done for convergence, Qspice forums], Unbalanced Input (IN_NEG to ground). Schematic on top, Voltage across C4 & C5 @bottom. (V(N04)-V(vg) across C4, V(vg) across C5)

