



## SWITCH WIRING GUIDE

### FOR CS-800 / CS-400 / CS-200

This guide is provided to aid in the installation of the rocker type power switch and/or the switch triac.

**\*Note:** The pilot lamp in the pushbutton switches operates at 100 V. The pilot lamp in the rocker type operates at 120 V. To convert, move the wire coming from pin 13 of the switch from section 3 of the 11 section terminal block.

FIGURE 1

CS-800

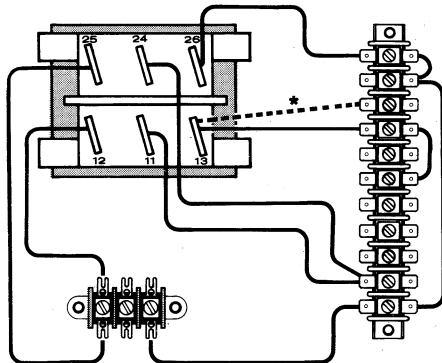


FIGURE 4

CS-800  
with Switch  
Triac



† 22 Ohm  
1 Watt

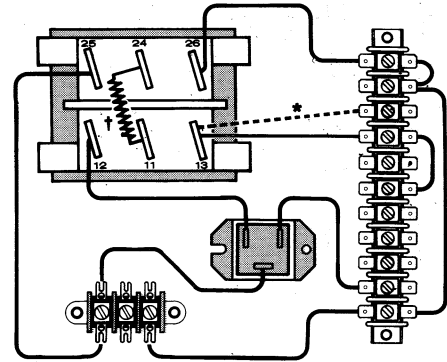


FIGURE 5

CS-800  
with Switch  
Triac



† 22 Ohm  
1 Watt

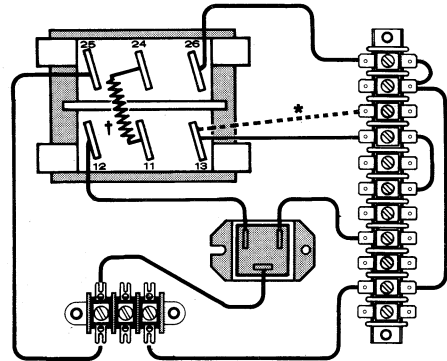


FIGURE 2

CS-800

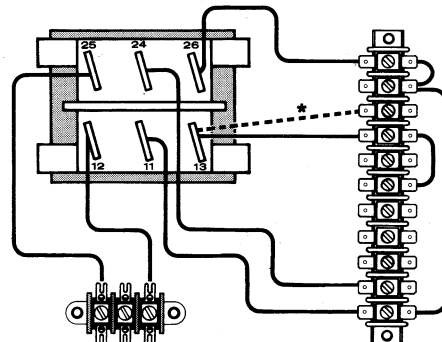


FIGURE 6

CS-200/400

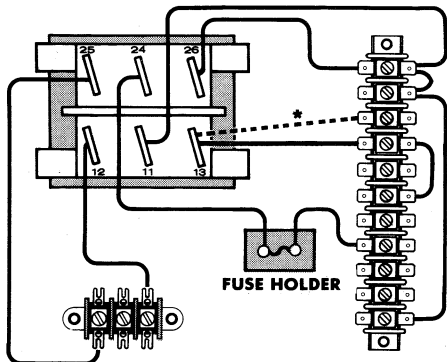


FIGURE 3

CS-800

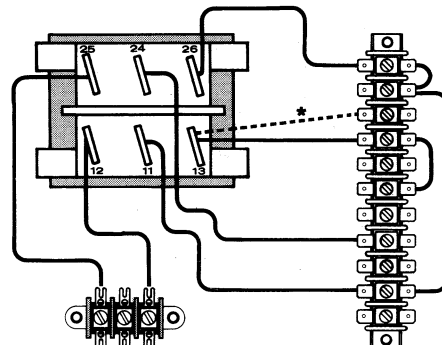


FIGURE 7

CS-400

