



SPECIFICATIONS (KX-5XC)

[illegible]

• KX-55C's specifications are printed on Page 9

Kenwood follows a policy of continuous advancements in development. For this reason specifications may be changed without notice.

DOLBY and the double-D symbol are trademarks of Dolby Laboratories Licensing Corporation.

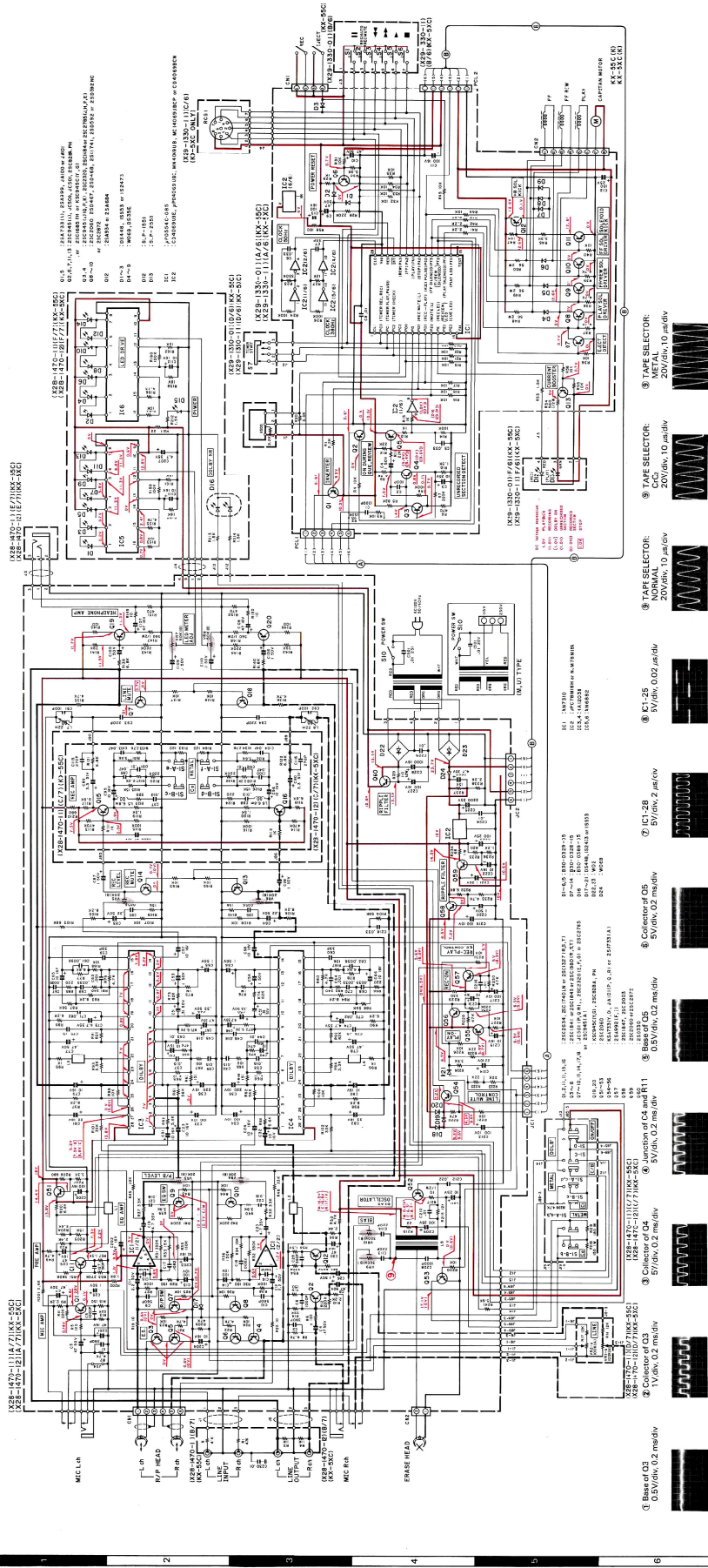
Noise reduction circuit made under license from Dolby Laboratories Licensing Corporation.

Kenwood poursuit une politique de progrès constants en ce qui concerne le développement. Pour cette raison, les spécifications sont sujettes à modifications sans préavis. La marque COLBY et le double "D" sont des marques déposées des Dolby Laboratories.

Le système de réduction du bruit de fond est fabriqué sous licence des Dolby Laboratories.

Kenwood strebt ständige Verbesserungen in der Entwicklung an. Daher bleiben Änderungen der technischen Daten jederzeit vorbehalten.

- DC voltages are measured by a VOM of 20 kV input impedance.
- Les tensions de courant continu sont mesurées par un multimètre d'une impédance d'entrée de 20 kV.
- Die Gleichstrom-Spannungen werden durch ein Vielfachmeßgerät von 20 kV/Einkanal-Impedanz gemessen.

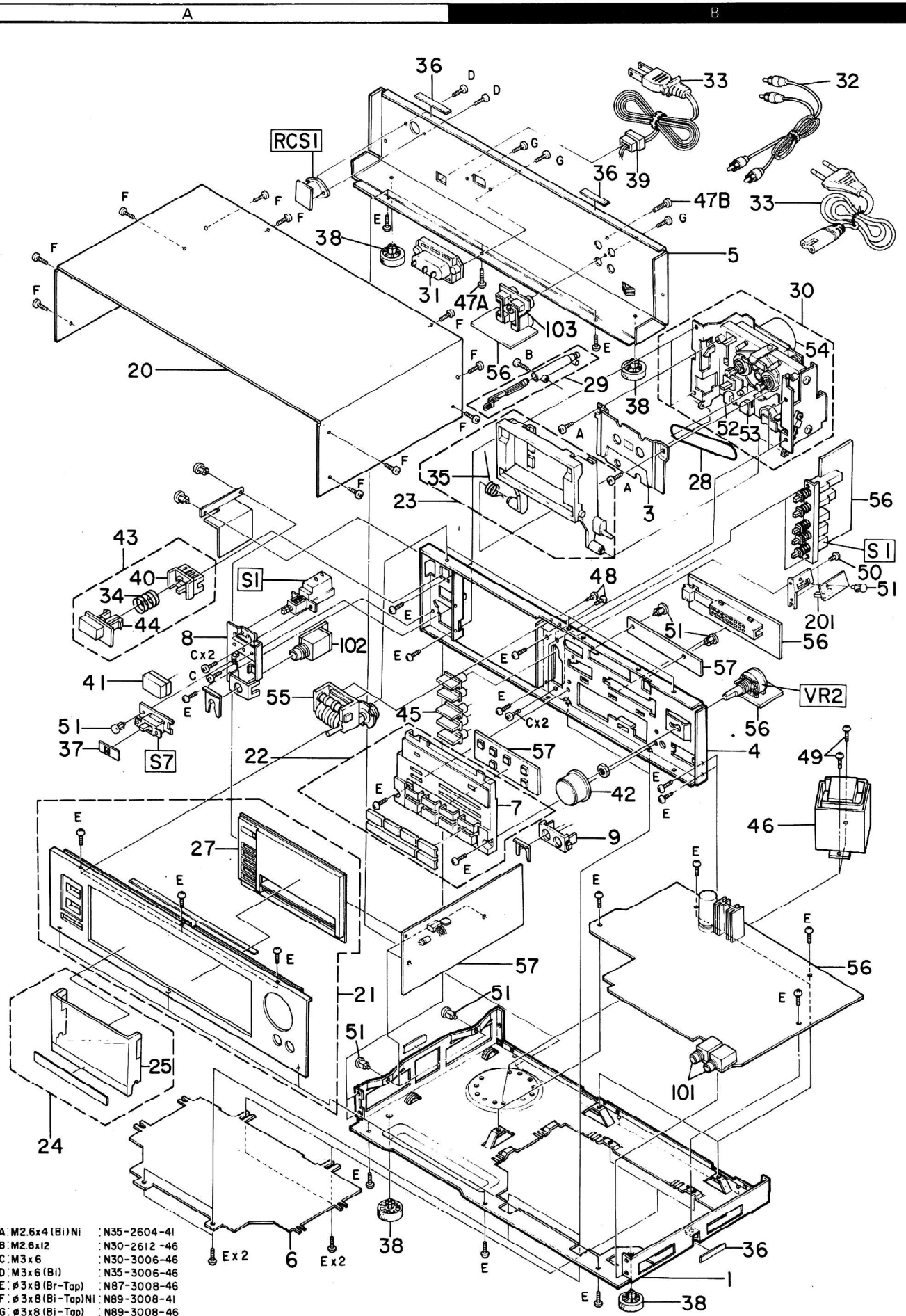


E



-
- 38

EXPLODED VIEW (KX-5XC)



* New Parts

Parts without Parts No. are not supplied.

Les articles non mentionnés dans le Parts No. ne sont pas fournis.

Teile ohne Parts No. werden nicht geliefert.

PARTS LIST

Note: For detail parts of the mechanism ass'y, refer to KX-77 Service Manual.

Ref. No. 参照番号	Parts No. 部品番号	Description 部品名 / 規格	Re- marks 備考
KX-77C			
1 3B	NO STOCK	MAIN CHASSIS	
3 1B	NO STOCK	DRESSING PANEL	
4 2B	NO STOCK	SUB PANEL	
5 1B	NO STOCK	REAR PANEL	
6 3A	NO STOCK	BOTTOM PLATE	
7 2B	NO STOCK	PANEL ESCUTCHEON	
8 2A	NO STOCK	MOUNTING HARDWARE(PHONE	
9 2B	NO STOCK	MOUNTING HARDWARE(MIC)	
20 1A	A01-0627-03	METALLIC CABINET	
21 3A	A20-2111-03	FRONT PANEL	*K
21 3A	A20-2111-03	FRONT PANEL	PU
21 3A	A20-2111-03	FRONT PANEL	MH
21 3A	A20-2111-03	FRONT PANEL	UE
21 3A	A20-2111-03	FRONT PANEL	X
21 3A	A20-2112-03	FRONT PANEL	*T
21 3A	A20-2113-03	FRONT PANEL	*E
22 2A	A21-0942-03	DRESSING PANEL ASSY	
23 2A	A53-0266-04	CASSETTE HOLDER ASSY	
24 3A	A53-0247-04	CASSETTE DOOR ASSY	
25 3A	A53-0248-04	CASSETTE DOOR	
-	B46-0055-30	WARRANTY CARD	P
-	B46-0060-00	WARRANTY CARD	T
-	B46-0061-30	WARRANTY CARD	K
-	B46-0062-30	WARRANTY CARD	UH
-	B46-0062-30	WARRANTY CARD	UE
-	B46-0063-13	WARRANTY CARD	UH
-	B46-0063-13	WARRANTY CARD	UE
-	B46-0064-20	WARRANTY CARD	X
-	B46-0078-03	WARRANTY CARD	E
-	B50-4450-00	INST MANUAL(ENG)	*K
-	B50-4450-00	INST MANUAL(ENG)	UH
-	B50-4450-00	INST MANUAL(ENG)	UE
-	B50-4451-00	INST MANUAL(ENG/FR)	*P
-	B50-4451-00	INST MANUAL(ENG/FR)	MX
-	B50-4452-00	INST MANUAL(SPANISH)	*M
-	B50-4453-00	INST MANUAL(4-LIGUAL)	*E
-	B50-4454-00	INST MANUAL(ENG)	*T
-	B59-0018-00	SERVICE STATIONS LIST	UH
-	B59-0018-00	SERVICE STATIONS LIST	UE
27 2A	B10-0541-03	FRONT GLASS ASSY	*
55 2A	B35-0218-15	COUNTER	
C1	C91-0079-05	CERAMIC 0.01UF AC125V	
28 2B	D16-0228-04	BELT	
29 1B	D39-0165-05	DAMPER ASSY	
30 1B	D40-0558-05	MECHANISM ASSY (Note)	*
31 1B	E03-0102-05	3P INLET	UM
31 1B	E03-0102-05	3P INLET	HT
31 1B	E03-0102-05	3P INLET	UE
31 1B	E03-0102-05	3P INLET	XE
32 1B	E30-0505-05	AUDIO CORD	
32 1B	E30-1353-05	AUDIO CORD	
33 1B	E30-1305-15	POWER CORD	UM
33 1B	E30-1305-15	POWER CORD	UE
33 1B	E30-1305-15	POWER CORD	H
33 1B	E30-1328-15	POWER CORD	T
33 1B	E30-1329-05	POWER CORD	E
33 1B	E30-1342-05	POWER CORD	X
33 1B	E30-1350-05	POWER CORD	KP

Ref. No. 参照番号	Parts No. 部品番号	Description 部品名 / 規格	Re- marks 備考
34 2A	G01-1157-04	COIL SPRING	
35 2A	G01-1158-04	COIL SPRING	
36 1B	G13-0439-04	CUSHION	
37 2A	G16-0346-04	SHEET	
-	H01-4348-04	CARTON BOX	*T
-	H01-4349-04	CARTON BOX	*K
-	H01-4349-04	CARTON BOX	PU
-	H01-4349-04	CARTON BOX	MH
-	H01-4349-04	CARTON BOX	UE
-	H01-4349-04	CARTON BOX	XE
-	H10-2303-02	POLYSTYRENE FIXTURE	
-	H20-1107-04	COVER	KP
-	H20-1107-04	COVER	UX
-	H20-1107-04	COVER	UE
-	H20-1107-04	COVER	TE
-	H20-1109-04	COVER	M
-	H25-0078-04	BAG (235x315)	
38 3A,3B	J02-0343-05	FOOT	
39 1B	J42-0083-05	BUSHING	
40 2A	J42-0326-04	ESCUTCHEON	KP
41 2A	K27-0656-14	KNOB (POWER)	
42 2B	K29-0442-04	KNOB (REC LEVEL)	
43 2A	K29-0959-04	KNOB ASSY (EJECT)	
44 2B	K29-0960-04	KNOB (MIC)	
45A 2A	K29-0961-14	KNOB (PUSH)X3	
45B 2A	K29-1018-14	KNOB (DOLBY)X2	
46 2B	L01-6461-05	POWER TRANS	KP
46 2B	L01-6464-05	POWER TRANS	UM
46 2B	L01-6464-05	POWER TRANS	HX
46 2B	L01-6464-05	POWER TRANS	UE
46 2B	L01-6464-05	POWER TRANS	TE
47A 1B	N09-0292-05	SCREW	
47B 1A,1B	N09-0377-05	SCREW	
48 2B	N09-0979-05	SCREW	
49 2B	N09-0311-05	SCREW	UM
49 2B	N09-0311-05	SCREW	UE
49 2B	N09-0311-05	SCREW	HX
49 2B	N09-0311-05	SCREW	TE
49 2B	N09-0982-05	SCREW	KP
50 2B	N09-0810-04	SCREW	
51 2A,2B	N29-0216-05	FASTENER	
-	S46-1325-05	LEAF SWITCH (MECHANISM)	
S1	S40-1035-05	PUSH SWITCH (POWER)	KP
S1	S40-1037-05	PUSH SWITCH (POWER)	UM
S1	S40-1037-05	PUSH SWITCH (POWER)	HX
S1	S40-1037-05	PUSH SWITCH (POWER)	UE
S1	S40-1037-05	PUSH SWITCH (POWER)	TE
52 1B	T32-0010-05	ERASE HEAD	
53 1B	T34-0022-05	REC/PLAYBACK HEAD	
54 1B	T42-0108-05	MOTOR	
-	W01-0301-05	HEAD CLEANING BAR	
56 2B,3B	X28-1470-10	AMPLIFIER PC BOARD ASSY	*K
56 2B,3B	X28-1470-10	AMPLIFIER PC BOARD ASSY	P
56 2B,3B	X28-1470-81	AMPLIFIER PC BOARD ASSY	*U
56 2B,3B	X28-1470-81	AMPLIFIER PC BOARD ASSY	MH
56 2B,3B	X28-1470-81	AMPLIFIER PC BOARD ASSY	UE
56 2B,3B	X28-1470-81	AMPLIFIER PC BOARD ASSY	XT
56 2B,3B	X28-1470-81	AMPLIFIER PC BOARD ASSY	E
57 3B	X29-1330-00	CONTROL AMP PCB ASSY	

E: Scandinavia & Europe H: Audio Club K: USA P: Canada

S: South Africa T: England U: PX (Far East, Hawaii)

UE: AAFES (Europe) X: Australia M: Other Areas

* New Parts

Parts without Parts No. are not supplied.

Les articles non mentionnés dans le Parts No. ne sont pas fournis.

Teile ohne Parts No. werden nicht geliefert.

PARTS LIST

Note: For detail parts of the mechanism ass'y, refer to KX-55 Service Manual.

Ref. No. 参照番号	Parts No. 部品番号	Description 部品名 / 規格	Re- marks 備考
KX-55C			
1 3D	NO STOCK	MAIN CHASSIS	
3 1B	NO STOCK	DRESSING PANEL	
4 2B	NO STOCK	SUB PANEL	
5 1B	NO STOCK	REAR PANEL	
6 3A	NO STOCK	BOTTOM PLATE	
7 2B	NO STOCK	PANEL ESCUTCHEON	
8 2A	NO STOCK	MOUNTING HARDWARE(PHONE)	
9 2B	NO STOCK	MOUNTING HARDWARE(MIC)	
20 1A	A01-0628-03	METALLIC CABINET	
21 3A	A20-2117-03	FRONT PANEL	*K
21 3A	A20-2117-03	FRONT PANEL	PU
21 3A	A20-2117-03	FRONT PANEL	MH
21 3A	A20-2117-03	FRONT PANEL	UE
21 3A	A20-2117-03	FRONT PANEL	X
21 3A	A20-2118-03	FRONT PANEL	*T
21 3A	A20-2119-03	FRONT PANEL	*E
22 2A	A21-0944-03	DRESSING PANEL ASSY	
23 2A	A53-0266-04	CASSETTE HOLDER ASSY	
24 3A	A53-0247-04	CASSETTE DOOR ASSY	
25 2B	A53-0248-04	CASSETTE DOOR	
-	B46-0055-30	WARRANTY CARD	P
-	B46-0060-00	WARRANTY CARD	T
-	B46-0061-30	WARRANTY CARD	K
-	B46-0062-30	WARRANTY CARD	UH
-	B46-0062-30	WARRANTY CARD	UE
-	B46-0063-13	WARRANTY CARD	UH
-	B46-0063-13	WARRANTY CARD	UE
-	B46-0064-20	WARRANTY CARD	X
-	B46-0078-03	WARRANTY CARD	E
-	B50-4450-00	INST MANUAL(ENG)	*K
-	B50-4450-00	INST MANUAL(ENG)	UH
-	B50-4450-00	INST MANUAL(ENG)	UE
-	B50-4451-00	INST MANUAL(ENG/FR)	*P
-	B50-4451-00	INST MANUAL(ENG/FR)	MX
-	B50-4452-00	INST MANUAL(SPANISH)	*M
-	B50-4453-00	INST MANUAL(4-LIGUAL)	*E
-	B50-4454-00	INST MANUAL(ENG)	*T
-	B59-0018-00	SERVICE STATIONS LIST	UH
-	B59-0018-00	SERVICE STATIONS LIST	UE
27 3A	B10-0541-03	FRONT GLASS	
55 2A	B35-0218-15	COUNTER	
C1	C91-0079-05	CERAMIC 0.01UF AC125V	
28 2B	D16-0228-04	BELT	
29 2B	D39-0165-05	DAMPER ASSY	
30 1B	D40-0558-05	MECHANISM ASSY (Note)	
-	E29-0114-05	TERMINAL	KP
31 1A	E03-0102-05	3P INLET	UH
31 1A	E03-0102-05	3P INLET	HX
31 1A	E03-0102-05	3P INLET	UE
31 1A	E03-0102-05	3P INLET	TE
32 1B	E30-0505-05	AUDIO CORD LUG	
32 1B	E30-1353-05	AUDIO CORD LUG	
33 1B	E30-1305-15	POWER CORD	UM
33 1B	E30-1305-15	POWER CORD	UE
33 1B	E30-1305-15	POWER CORD	H
33 1B	E30-1328-15	POWER CORD	T
33 1B	E30-1329-05	POWER CORD	E
33 1B	E30-1342-05	POWER CORD	X

Ref. No. 参照番号	Parts No. 部品番号	Description 部品名 / 規格	Re- marks 備考
33 1B	E30-1350-05	POWER CORD	KP
34 2A	G01-1157-04	COIL SPRING	
35 2A	G01-1158-04	COIL SPRING	
36 1B	G13-0439-04	CUSHION	
37 2A	G16-0346-04	SHEET	
-	H01-4350-04	CARTON BOX	*T
-	H01-4351-04	CARTON BOX	*K
-	H01-4351-04	CARTON BOX	PU
-	H01-4351-04	CARTON BOX	MH
-	H01-4351-04	CARTON BOX	UE
-	H01-4351-04	CARTON BOX	XE
-	H10-2304-02	POLYSTYRENE FIXTURE	
-	H20-1107-04	COVER	KP
-	H20-1107-04	COVER	UX
-	H20-1107-04	COVER	UE
-	H20-1107-04	COVER	TE
-	H20-1109-04	COVER	M
-	H25-0078-04	BAG (235x315)	
38 3A, 3B	J02-0343-05	FOOT	
39 1B	J42-0083-05	BUSHING	KP
40 2A	J42-0326-04	ESCUTCHEON	
41 2A	K27-0656-14	KNOB (POWER)	
42 2B	K29-0442-04	KNOB (REC LEVEL)	
43 2A	K29-0959-04	KNOB ASSY (EJECT)	
45A 2A	K29-0961-14	KNOB (PUSH)X3	
45B 2A	K29-1018-14	KNOB (DOLBY)X2	
46 2B	L01-6461-05	POWER TRANS	KP
46 2B	L01-6464-05	POWER TRANS	UM
46 2B	L01-6464-05	POWER TRANS	HX
46 2B	L01-6464-05	POWER TRANS	UE
46 2B	L01-6464-05	POWER TRANS	TE
47A 1B	N09-0292-05	SCREW	
47B 1A	N09-0377-05	SCREW	
48 2B	N09-0979-05	SCREW	
49 2B	N09-0311-05	SCREW	UM
49 2B	N09-0311-05	SCREW	UE
49 2B	N09-0311-05	SCREW	HX
49 2B	N09-0311-05	SCREW	TE
49 2B	N09-0982-05	SCREW	KP
50 2B	N09-0810-04	SCREW	
51 2A, 2B	N29-0216-05	FASTENER	
-	S46-1325-05	LEAF SWITCH	
S1	S40-1035-05	PUSH SWITCH (POWER)	KP
S1	S40-1037-05	PUSH SWITCH (POWER)	UM
S1	S40-1037-05	PUSH SWITCH (POWER)	HX
S1	S40-1037-05	PUSH SWITCH (POWER)	UE
S1	S40-1037-05	PUSH SWITCH (POWER)	TE
52 1B	T32-0010-05	ERASE HEAD (MECHANISM)	
53 1B	T34-0022-05	REC/PLAYBACK HEAD	
54 1B	T42-0108-05	MOTOR	
-	W01-0301-05	HEAD CLEANING BAR	
56 2B, 3B	X28-1470-11	AMPLIFIER PC BOARD ASSY	*K
56 2B, 3B	X28-1470-11	AMPLIFIER PC BOARD ASSY	P
56 2B, 3B	X28-1470-82	AMPLIFIER PC BOARD ASSY	*U
56 2B, 3B	X28-1470-82	AMPLIFIER PC BOARD ASSY	MH
56 2B, 3B	X28-1470-82	AMPLIFIER PC BOARD ASSY	UE
56 2B, 3B	X28-1470-82	AMPLIFIER PC BOARD ASSY	XT
56 2B, 3B	X28-1470-82	AMPLIFIER PC BOARD ASSY	E
57 3B	X29-1330-01	CONTROL AMP PCB ASSY	

E: Scandinavia & Europe H: Audio Club K: USA P: Canada

S: South Africa T: England U: PX (Far East, Hawaii)

UE: AAFES (Europe) X: Australia M: Other Areas