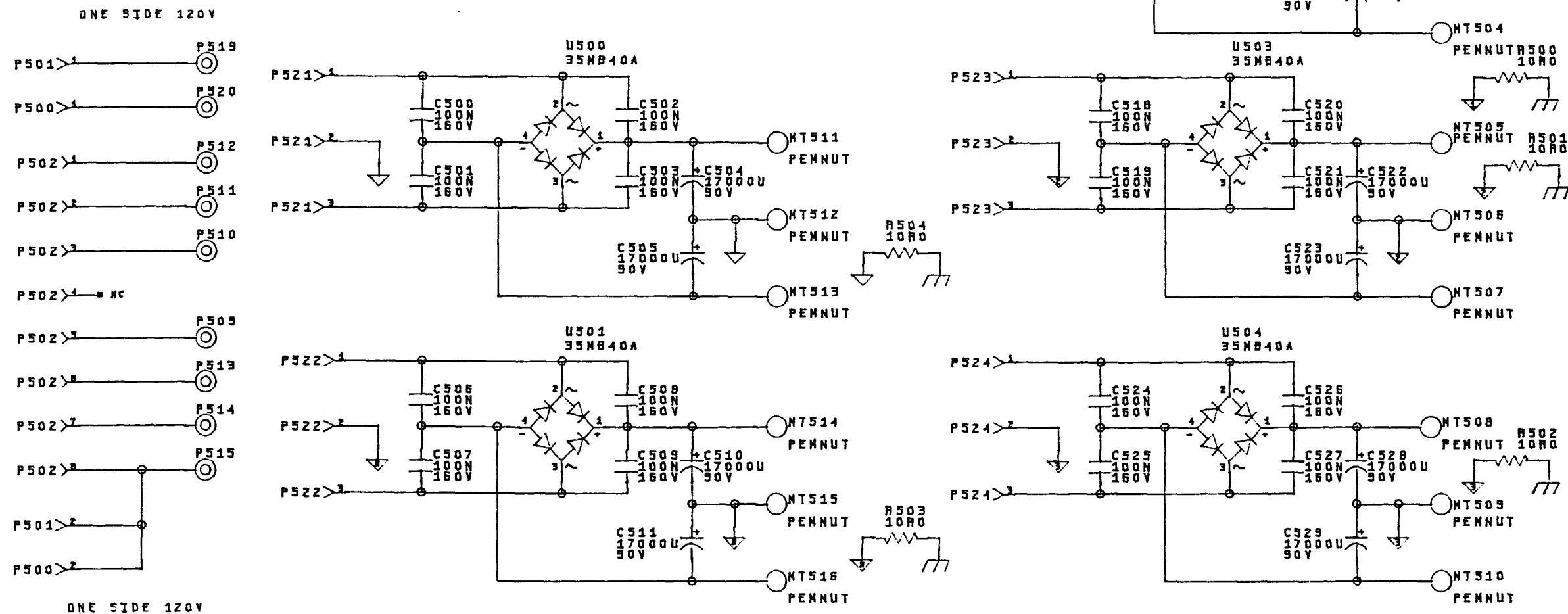
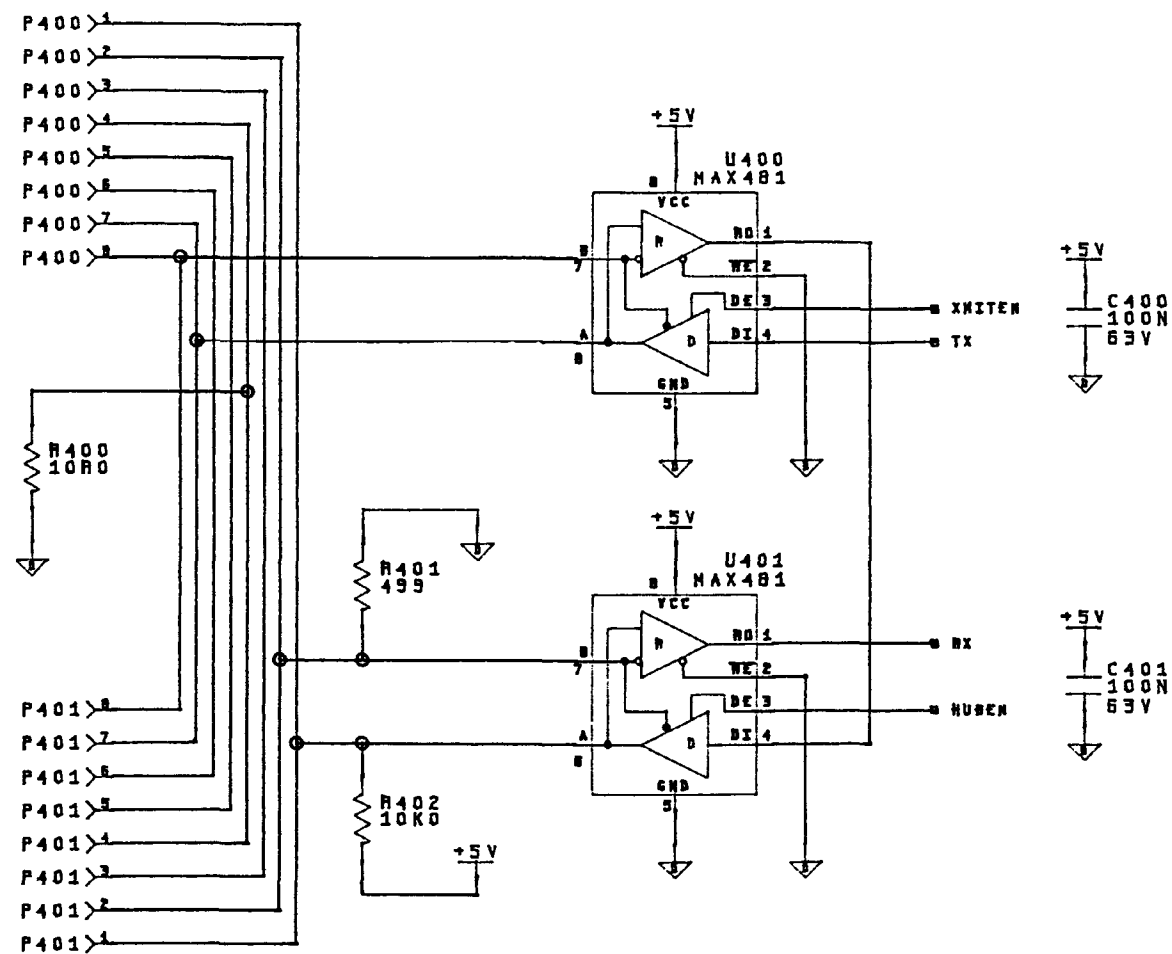


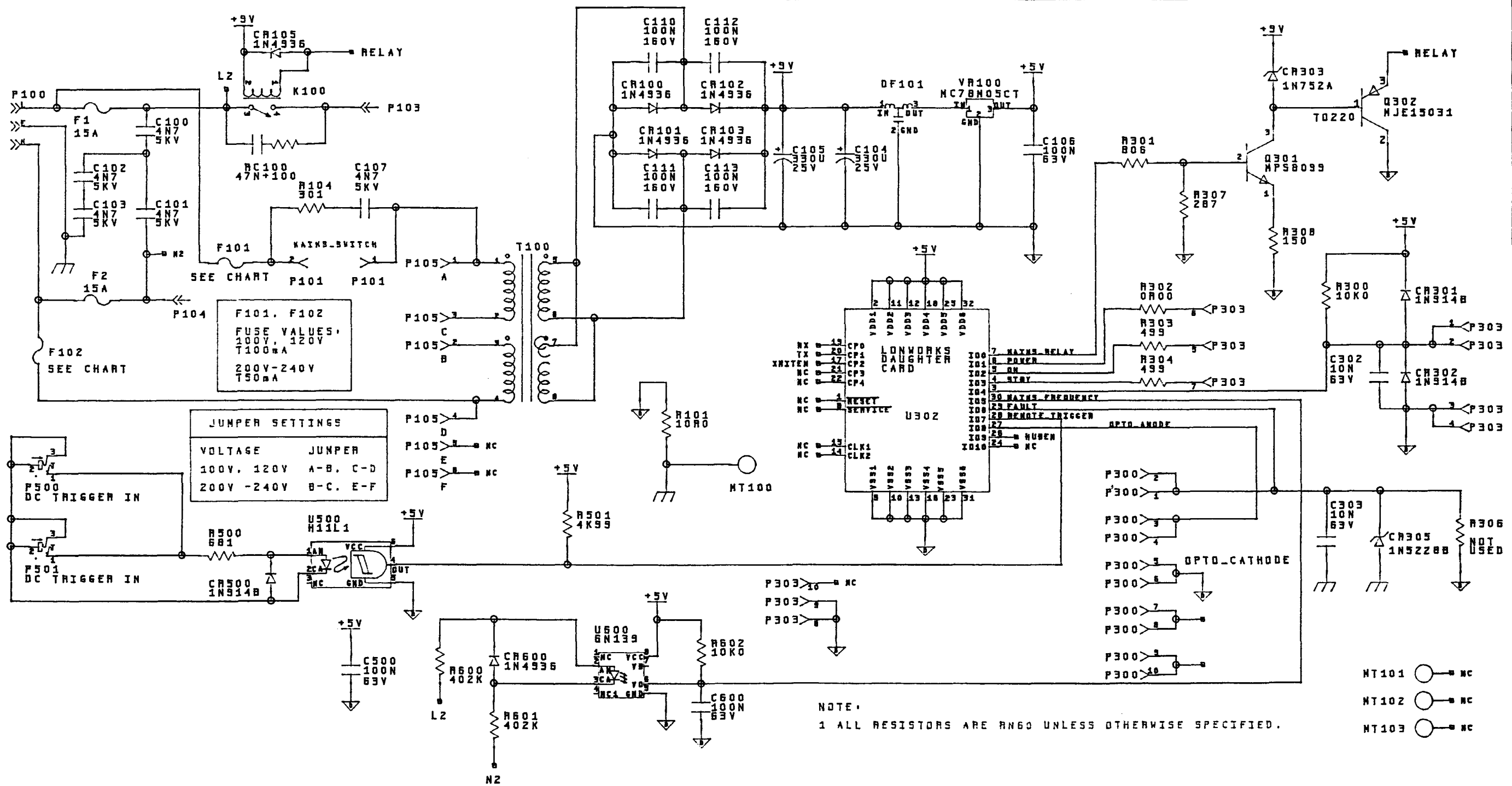
1. P516, 517, 518 mounts to solderside of PCB.
2. U500-504 mounts to solderside of PCB.
3. P523-525 are new single brackets (see MW for Details).
4. Slots for bridge are too small on PCB, enlarge.
5. P516 & 517 are 6 pin R/A Molex, mounts solderside PCB.
6. P518 3 pin R/A Molex, mounts solderside PCB.
7. PCB move caps so they don't hang off board.

[illegible]



ORIGINAL IN RED	
<input checked="" type="checkbox"/> Part #	580460C
<input checked="" type="checkbox"/> Print #	942542E
Release date:	
Type of release:	<input type="checkbox"/> Prototype <input type="checkbox"/> Pilot <input type="checkbox"/> 1st production <input checked="" type="checkbox"/> Revision
Comments:	
Drawing approval: _____ Eng approval: <i>MW</i>	
Issued by: _____ DATE: <i>11/2/87</i>	
SIGNATURE	

				<div>MADRIGAL</div> <div>2001 South Main Street Middletown Connecticut 06457 U.S.A.</div>								
E	NO CHANGES TO THIS SHEET	12-9-87		MATERIAL			SHEET 2		OF 2		SIZE 8	
D	CHANGE PIN 7, 8 U400, U401	11-9-87		USED IN AMP 5			A	B	C	D	E	F
C	NO CHANGES TO THIS SHEET	8-24-87										
B				DR. BY MWH	DATE 05/05/87	No. 942542E						
A	VALUE & COMPONENT CHANGE	7-22-87	CH.	DATE								
ISSUE	REVISION	DATE	SCALE		NAME AC SUPPLY BOARD							



ORIGINAL IN RED

Part # 580460C

Print # 942542E

Released date: 12/19/97

Type of release: ☐ Prototype ☐ Pilot ☐ Not production ☒ Revision

Comments: DRAWING CORRECTION ONLY NO ROW CHANGES

Drafting approved: [Signature] Eng approved: [Signature]

Issued by: D. B. [Signature] DATE: 4/3/97

			MADRIGAL			2081 south main street addleton wisconsin 53417 U.S.A.		
E	FUSE VALUE CORRECTION	12-9-97	MATERIAL			SHEET 1	OF 2	SIZE B
D	NO CHANGES TO THIS SHEET	11-9-97	USED IN			A	B	C D E F
C	ADD C303, CR305	8-24-97	AMP 5			No.		
B			NAME			942542E		
A	VALUE & COMPONENT CHANGE	7-22-97	AC SUPPLY BOARD (CHAINS)					
ISSUE	REVISION	DATE	SCALE					