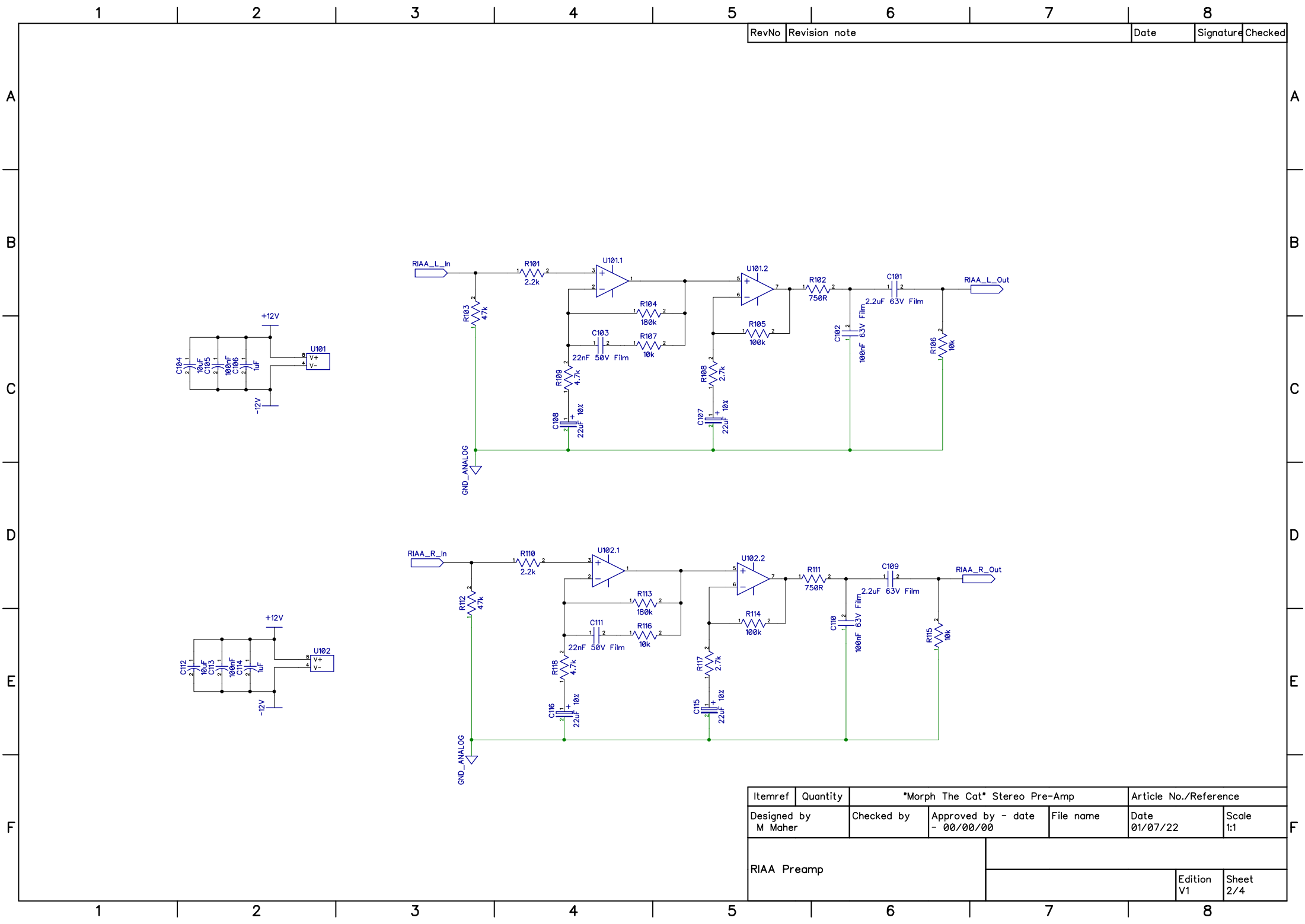
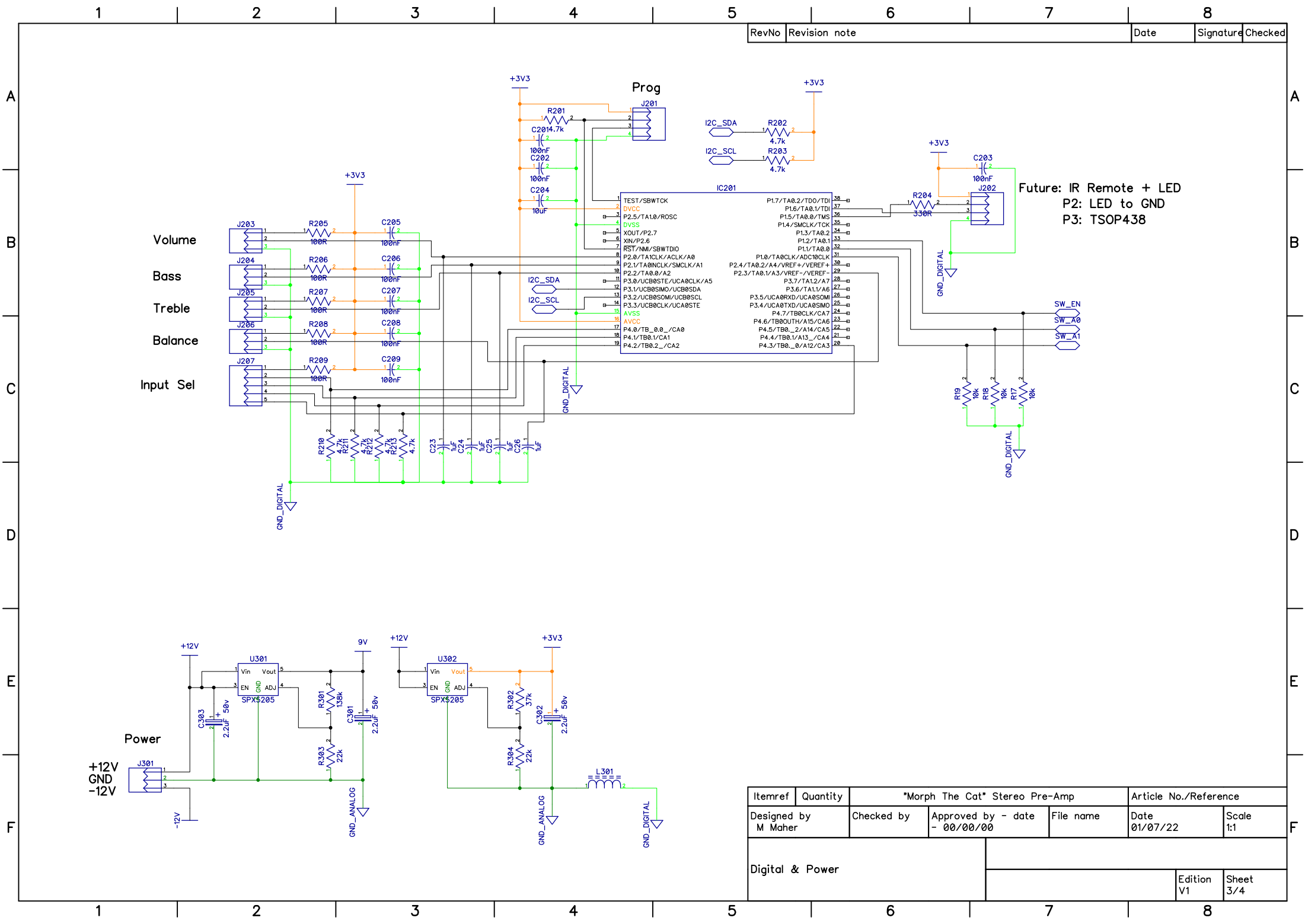


RevNo	Revision note	Date	Signature	Checked
-------	---------------	------	-----------	---------

Itemref	Quantity	"Morph The Cat" Stereo Pre-Amp			Article No./Reference	
Designed by M Maher	Checked by	Approved by - date - 00/00/00	File name	Date 01/07/22	Scale 1:1	
Tone Control Processor				Edition V1		
				Sheet 1/4		





RevNo	Revision note	Date	Signature	Checked
-------	---------------	------	-----------	---------

Itemref	Quantity	"Morph The Cat" Stereo Pre-Amp			Article No./Reference	
Designed by M Maher	Checked by	Approved by - date - 00/00/00	File name	Date 01/07/22	Scale 1:1	
Digital & Power						
					Edition V1	Sheet 3/4

1		2		3		4		5		6		7		8			
										RevNo	Revision note			Date	Signature	Checked	
A																	A
B																	B
C																	C
D																	D
E																	E
F																	F

Name	Value	Manufacturer	Quantity	RefDes
FCA1206C474M-H3	470nF 16V Film	Cornell Dubilier	14	C1, C3, C5, C9, C11, C12, C15, C22, C27, C28, C29, C30, C33, C34
ECH-U1C562GX5	5.6nF 16V Film	Panasonic	2	C2, C21
SMDTC03100KB00KP00	100nF 63V Film	WIMA	6	C4, C6, C19, C20, C102, C110
SMDTC04220TB00KQ00	2.2uF 63V Film	WIMA	6	C7, C8, C10, C17, C101, C109
CAP_0805	1uF		7	C13, C23, C24, C25, C26, C106, C114
CAP_1206	10uF		5	C14, C18, C104, C112, C204
CAP_0805	100nF		13	C16, C31, C32, C105, C113, C201, C202, C203, C205, C206, C207, C208, C209
FCP1210H223G-G2	22nF 50V Film	Cornell Dubilier	2	C103, C111
UKL1E220KDDANA	22uF 10%	Nichicon	4	C107, C108, C115, C116
UKL1H2R2MDD	2.2uF 50v	Nichicon	3	C301, C302, C303
MSP430G2955IDA38R		Texas Instruments	1	IC201
Terminal Pin 1986		Keystone	32	J1, J2, J3, J4, J5, J6, J7, J8, J9, J10, J11, J12, J13, J14, J15, J16, J17, J18, J19, J20, J21, J22, J23, J24, J25, J26, J27, J28, J29, J30, J31, J32
B4B-PH-K-S		JST	2	J201, J202
B3B-PH-K-S		JST	5	J203, J204, J205, J206, J301
B5B-PH-K-S		JST	1	J207
BLM21SP102BH1D		Murata Electronics	1	L301
RES_0805	5.6k		2	R1, R15
RES_0805	10k		21	R2, R3, R4, R5, R6, R7, R8, R9, R10, R11, R12, R13, R14, R16, R17, R18, R19, R106, R107, R115, R116
RES_0805	2.2k		2	R101, R110
RES_0805	750R		2	R102, R111
RES_0805	47k		2	R103, R112
RES_0805	180k		2	R104, R113
RES_0805	100k		2	R105, R114
RES_0805	2.7k		2	R108, R117
RES_0805	4.7k		9	R109, R118, R201, R202, R203, R210, R211, R212, R213
RES_0805	330R		1	R204
RES_0805	100R		5	R205, R206, R207, R208, R209
RES_0805	138k		1	R301
RES_0805	37k		1	R302
RES_0805	22k		2	R303, R304
TDA7440		ST	1	U1
DG509B		Vishay	1	U2
NE5532DR		Texas Instruments	2	U101, U102
SPX5205		MaxLinear	2	U301, U302
			164	

Snags:

1. MINOR: Poor terminal pins

2. MINOR only 4 switch lines routed: ok for BCD but increase for trad. switch

3. MAJOR: R201 too low: use 47k

4. MINOR Reduce PCB Size

5. MINOR Add Silk refs to connectors

6. MINOR: difficult res values: use R301 = 133k, R303=20k

Itemref	Quantity	"Morph The Cat" Stereo Pre-Amp			Article No./Reference	
Designed by M Maher	Checked by	Approved by - date - 00/00/00	File name	Date 01/07/22	Scale 1:1	
Bill Of Materials						
				Edition V1	Sheet 4/4	