

Differential Input Stage

50R is assumed output impedance from driving device.

IAMP_IN+

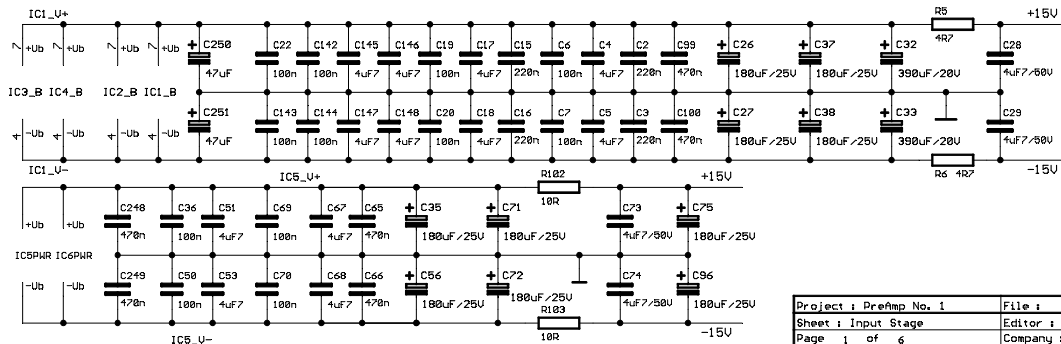
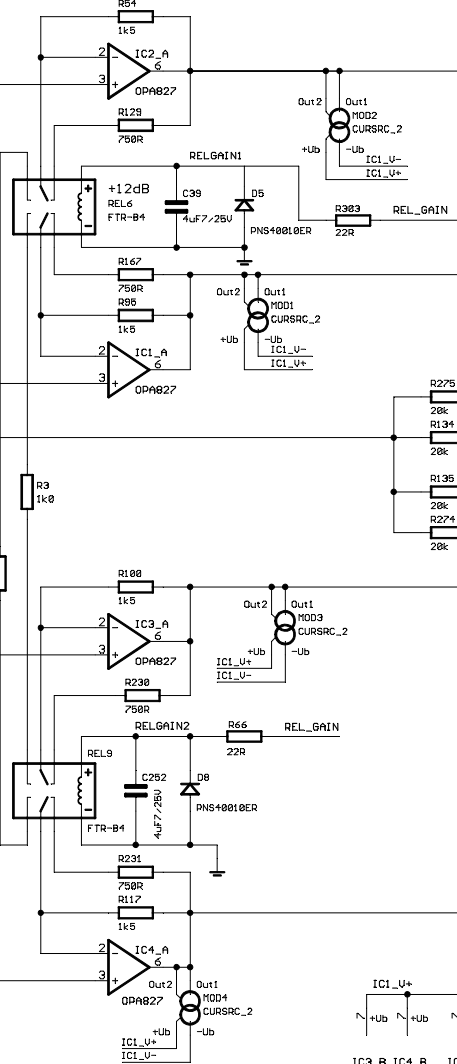
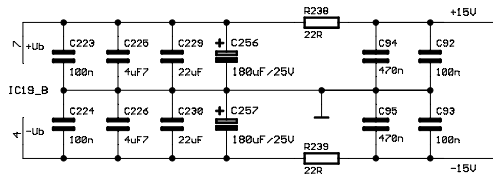
50R+261R+200R

CH-BTRAP

Common Mode Bootstrapping and/or Guard Drive

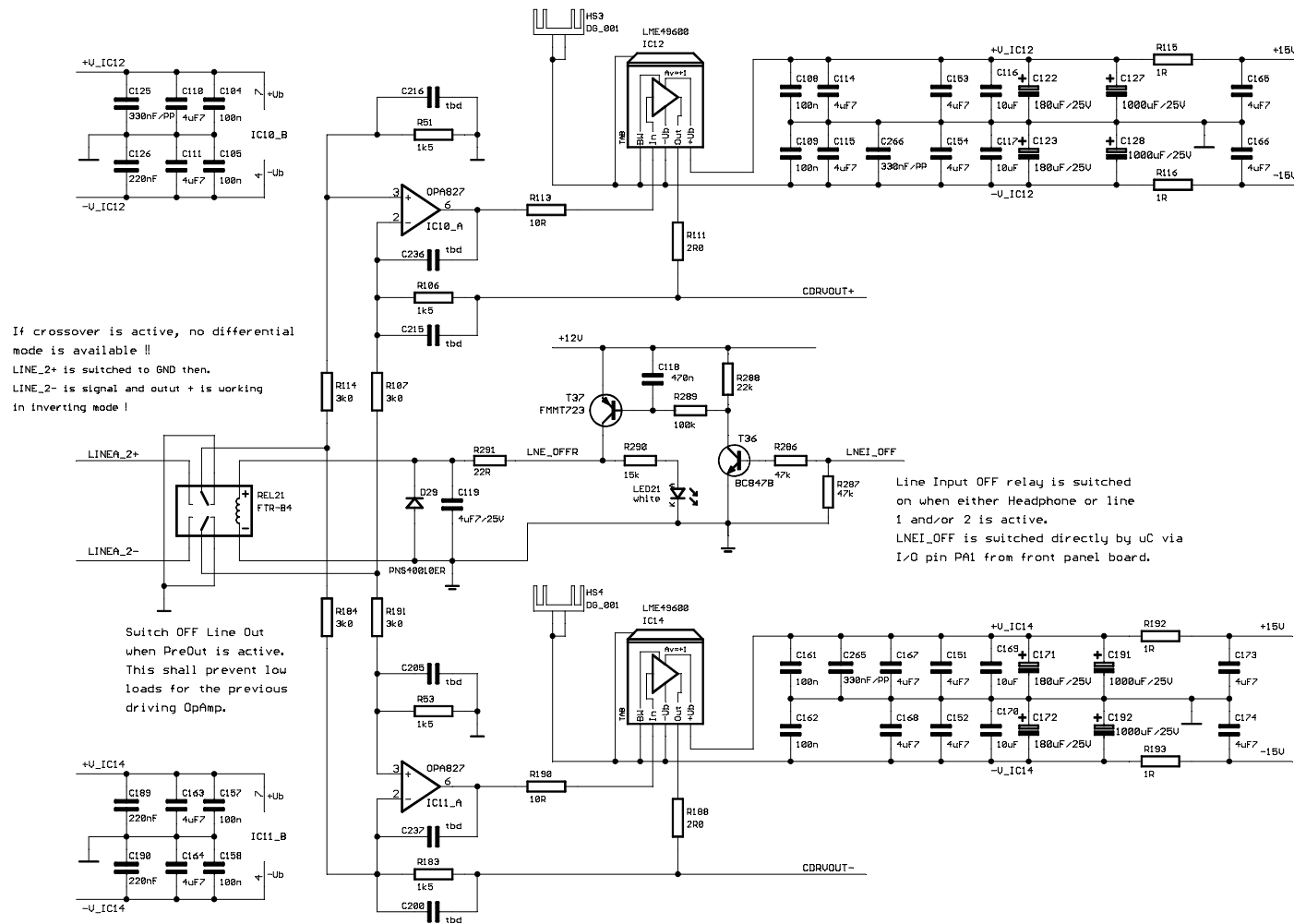
IAMP_IN-

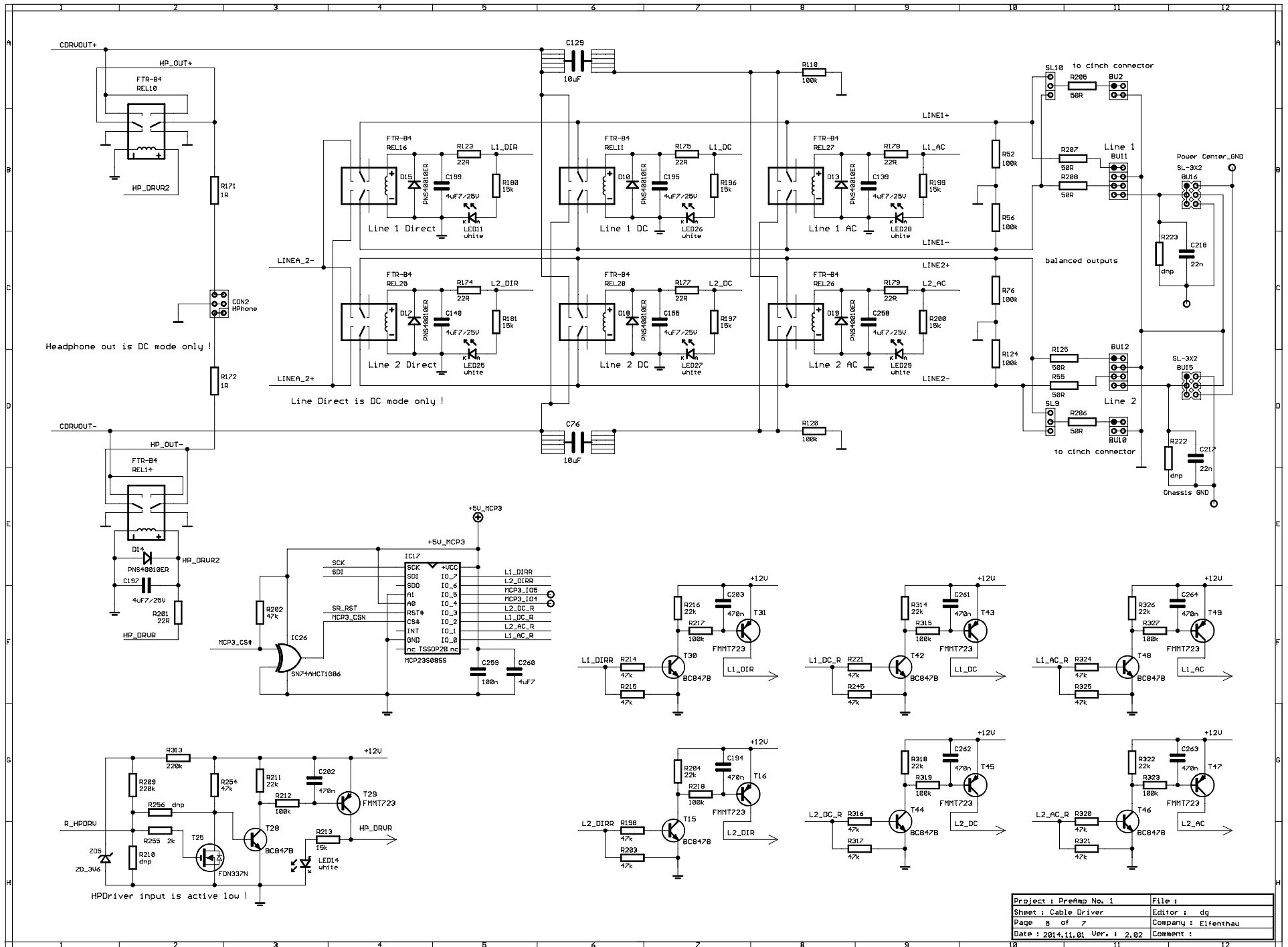
50R+261R+200R

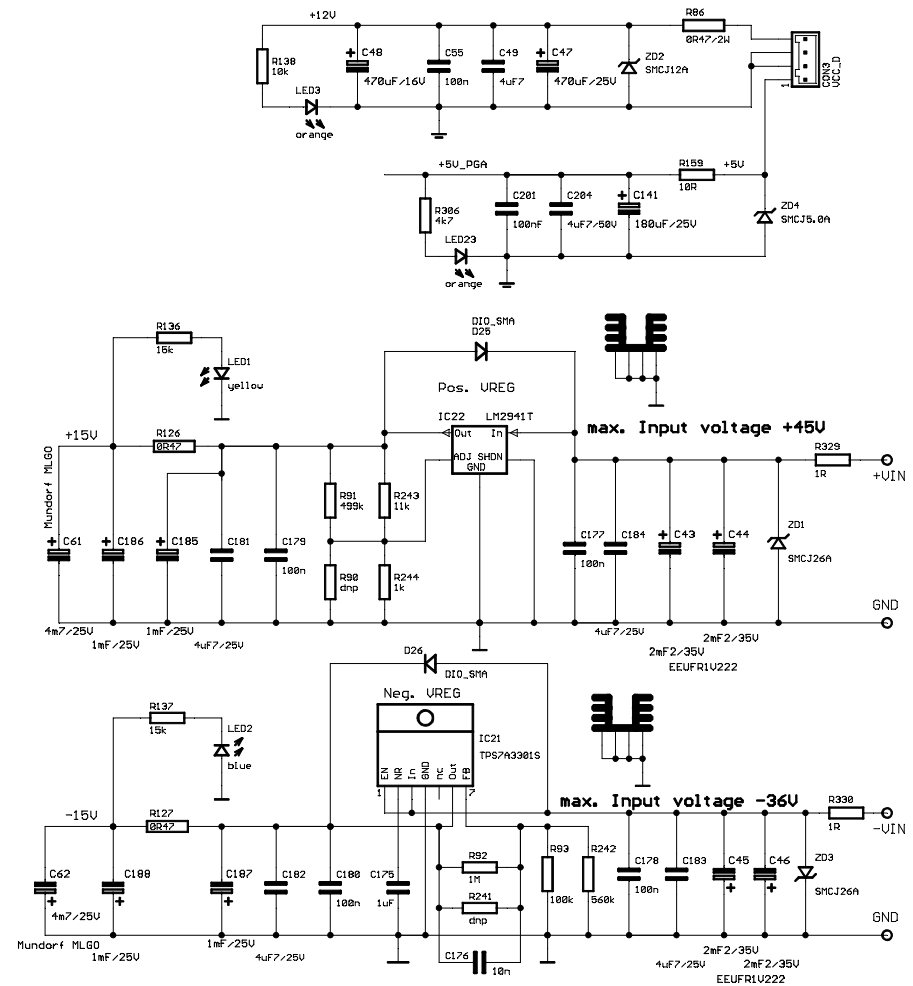
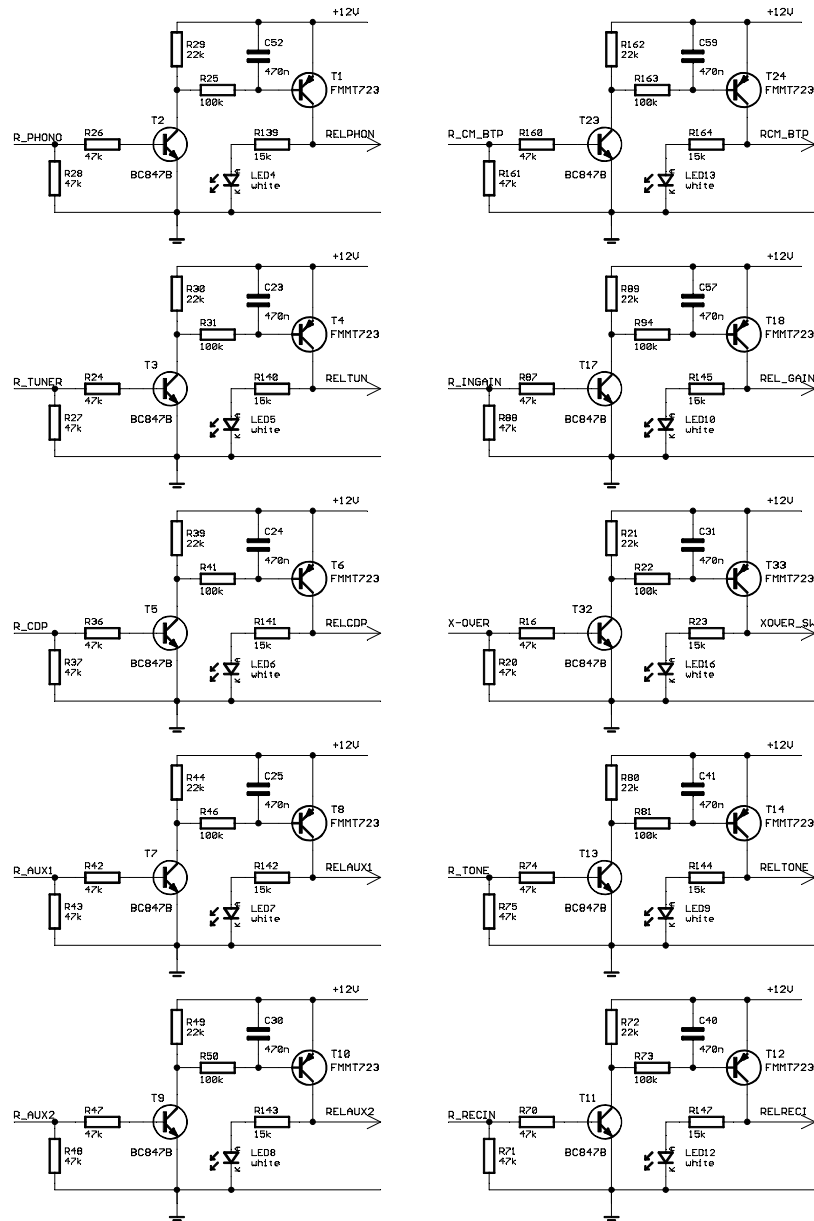


Project : Preamp No. 1	File :
Sheet : Input Stage	Editor : dg
Page 1 of 6	Company : Elfenthu
Date : 2014.10.23	Ver. : 2.02
	Comment :

Headphone Amp and Cable Driver







Relais Drivers and Voltage regulators

Project : PreAmp No. 1	File :
Sheet : Relais Drivers	Editor : dg
Page : 6 of 7	Company : Elfenhou
Date : 2014.10.25 Ver. : 2.02	Comment :