



## Power M1

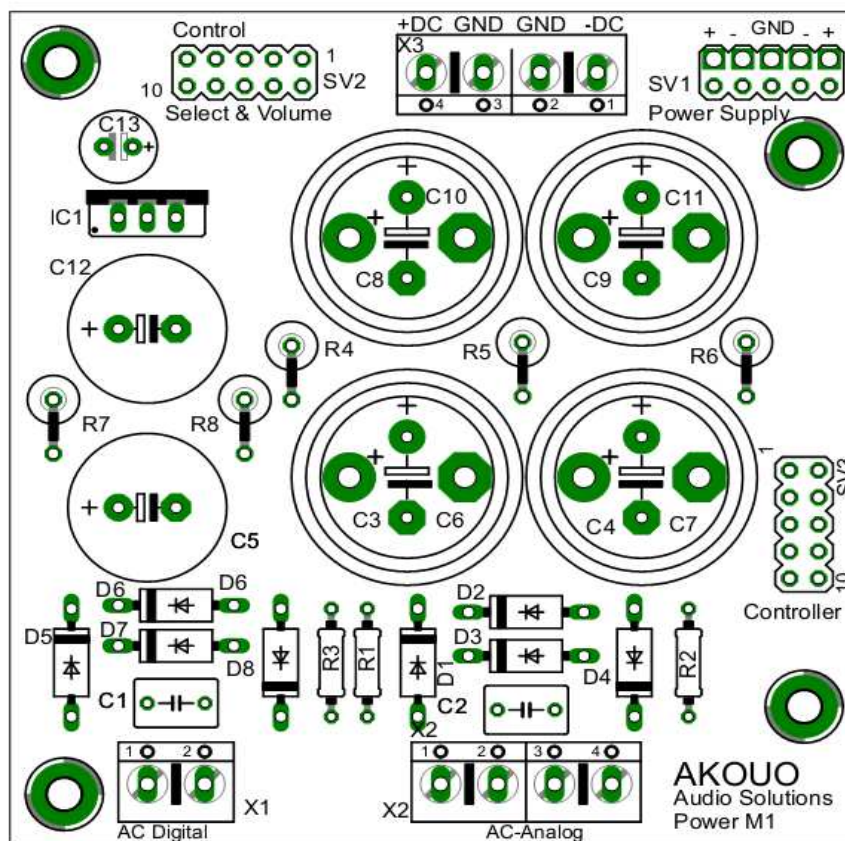
**Power Supply for  
AKOOU Select & Volume and  
AKOOU Controller Board**

Version 1.0



# 1 Connections

## 1.1 Top view

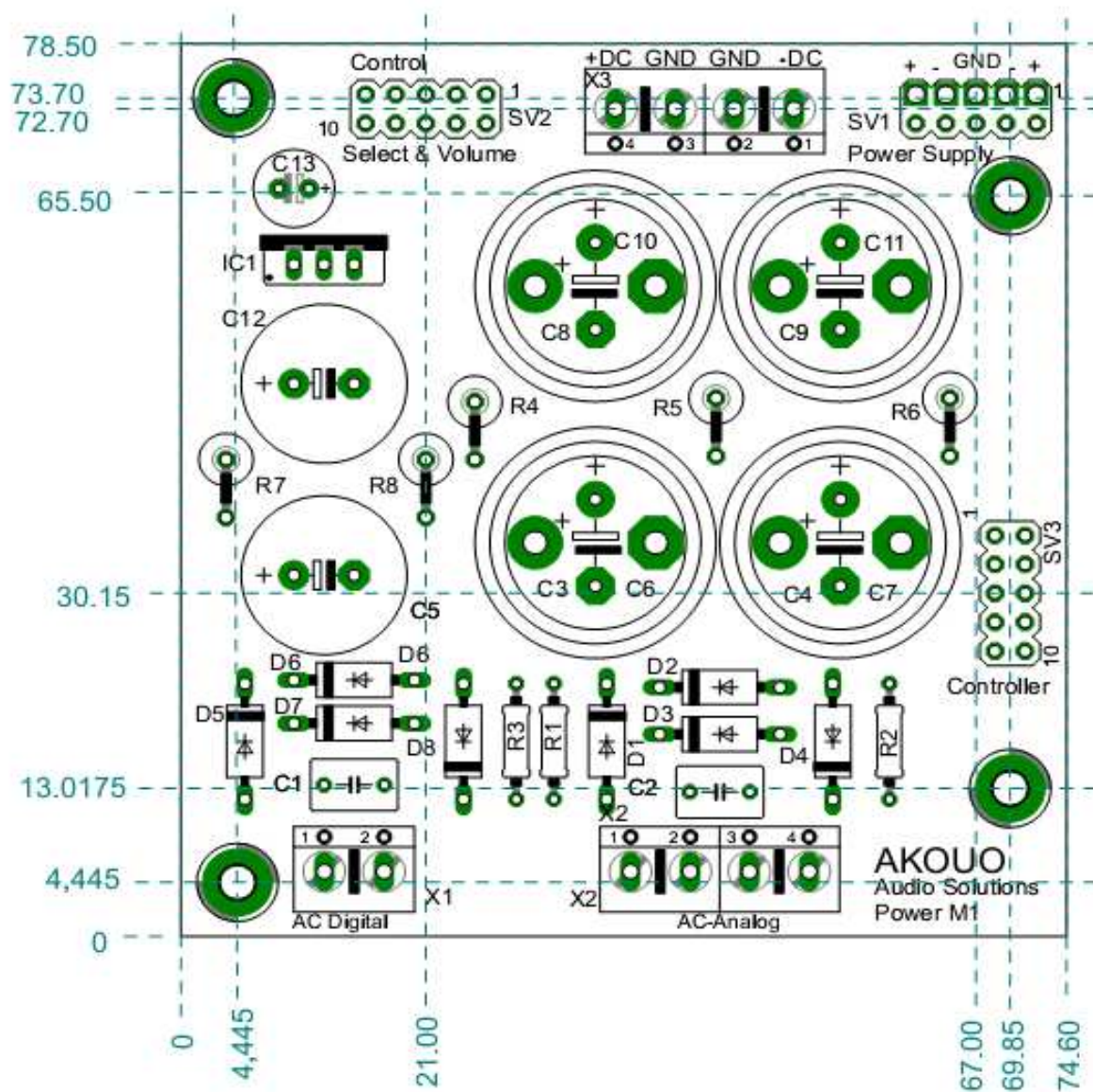


### 1.1.1 Pin assignment

	SV 1 Analog Power	SV2, SV3 Control Digital Power	X1	X2	X3
Pin1	+DC	+5V Supply	AC3-6V	AC1-18V	-DC
Pin 2	+DC	+5V Supply	AC3-6V	AC1-18V	GND
Pin 3	-DC	SPI-CLK		AC2-18V	GND
Pin 4	-DC	SPI-MOSI		AC2-18V	+DC
Pin 5	GND	SPI- ENABLE			
Pin 6	GND	SPI-MISO			
Pin 7	-DC	REL-0			
Pin 8	-DC	REL-1			
Pin 9	+DC	GND			
Pin 10	+DC	GND			

## 2 Mechanical specification

### 2.1 Top view



### 3 Technical data

Dimensions	78,5mm x 74,6mm
Input Voltage AC1/ AC2	AC 22V max. DC 35V max.
Input Voltage AC3	AC12Vmax, DC 18V max
Output Voltage Control	5V DC
Output Voltage DC-/DC+	Depends on AC1/AC2

## 4 Schematics

