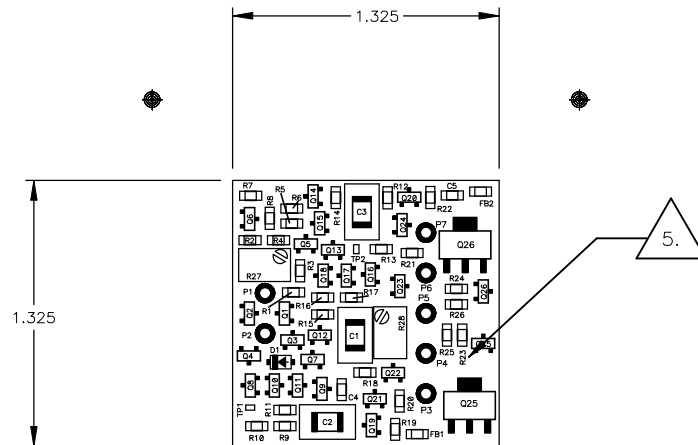


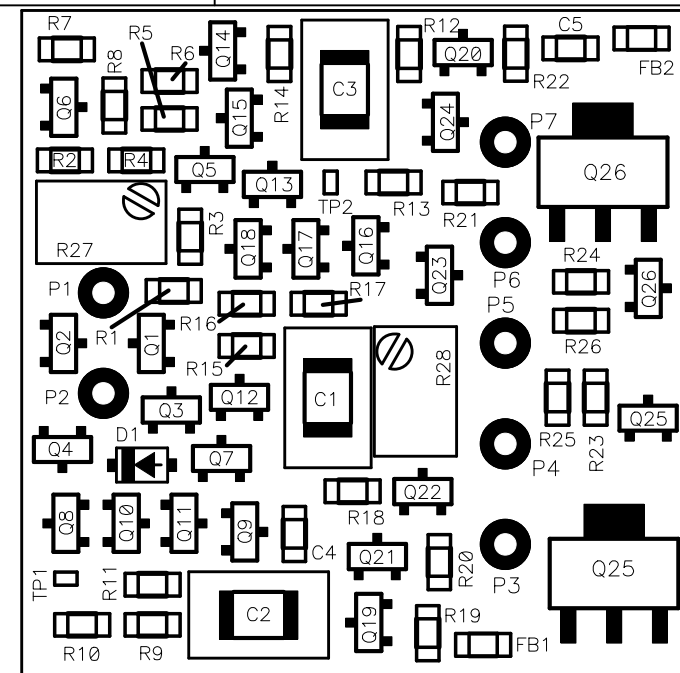
DIY AUDIO DISCRETE OPAMP
SW-OPA_SMT1
PWB DWG SWOPA2620PWB1 REV A



TOP ASSEMBLY OUTLINE & NOTES

NOTES: UNLESS OTHERWISE SPECIFIED

- ALL MATERIALS ARE TO BE ROHS COMPLIANT. FABRICATE PER ANSI/IPC-A-600, IPC-QE-605, IPC-4101, IPC-4552 AND IPC-SM-840 SPECIFICATIONS.
- MATERIAL: BASE MATERIAL LAMINATED EPOXY GLASS (COLOR GREEN) .056 THK (.062 MAX) ROHS COMPLIANT FR-4 PER IPC-4101 SLASH SHEETS #26 OR #83 OR #98 WITH MINIMUM Tg 170 DEGREE C OR HIGHER, Td 340 DEGREE C OR HIGHER AND FLAME RATED UL 94V-0.
- SOLDERMASK BOTH SIDES OF BOARD OVER BARE COPPER WITH ROHS COMPLIANT MATERIAL PER ANSI/IPC-SM-840, COLOR SHALL BE GREEN.
- APPLY ROHS-APPROVED FINISH OR PLATING TO EXPOSED COPPER, BOTH SIDES. PLATING TO BE PURE TIN OR SILVER OR ELECTROLESS NICKLE/IMMERSION GOLD OR OTHER MATERIAL APPROVED BY PURCHASER.
- INDICATED AREA ON BOTTOM SIDE AVAILABLE FOR APPLICATION OF PCB MANUFACTURE LOGO, UL MARKING, DATE-CODE AND ROHS COMPLIANT SYMBOL. USE OF OTHER LOCATION TO BE APPROVED BY PURCHASER.
- APPLY SILKSCREEN TO COMPONENT SIDE OF BOARD USING NON-CONDUCTIVE ROHS COMPLIANT WHITE EPOXY INK.
- SEE ARTWORK WITH SAME DRAWING NUMBER AND REVISION AS THIS DRAWING.
- HOLE LOCATIONS SPECIFIED IN SEPARATE DRILL FILE TAKE PRECEDENCE OVER THIS DWG AND ARTWORK. DIMENSIONS ON DWG TAKE PRECEDENCE OVER ARTWORK.
TOLERANCE ARE: .XX=+/- .01; .XXX=+/- .005; ANGLES=2 DEG
- SEE SEPARATE DRILL FILE FOR HOLE LOCATIONS. SELECTED HOLE LOCATIONS SHOWN ON THIS SHEET FOR REF ONLY.
- HOLE SIZES ARE SPECIFIED AS FINAL DIMENSIONS AFTER PLATING AND FINISHING. UNLESS OTHERWISE SPECIFIED ALL HOLES TO BE PLATED.
- HOLE PLATING TO BE ROHS COMPLIANT USING PURE TIN OR SILVER OR ELECTROLESS NICKLE/IMMERSION GOLD OR OTHER MATERIAL APPROVED BY PURCHASER.
- DESIGN GEOMETRY MINIMUM FEATURE SIZES:
TRACE WIDTH 10 MILS
TRACE-TO-TRACE; TRACE-TO-PAD; PAD-TO-PAD 10 MILS
HOLE-TO-HOLE 15 MILS
BOARD EDGE 25 MILS
SILKSCREEN LINE 6 MILS SILKSCREEN-TO-BARE COPPER 6 MILS



Component Placement Detail

Drill Table			
Hole Dia (inch)	Symbol	Quantity	Plated
0.016	+	14	Yes
0.029	X	12	Yes
0.043	⊠	7	Yes

REVISION HISTORY

A. WORKING DWG FOR PRELIMINARY DEVELOPMENT. NOT RELEASED.

Title			
SW-OPA DISC OPAMP SMT(1) PWB			
Size	Number		Rev
	SWOPA2620PWB1		A
Date	Fri Jan 25, 2013		Drawn by
	D. Chisholm		
File Name	Opamp01_alt1.pcb		Sheet
	of		