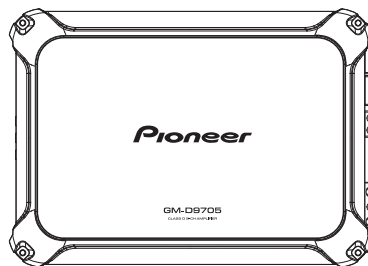


Pioneer

Service Manual



GM-D9705/XEVEL

ORDER NO.
CRT6391

CLASS D FIVE-CHANNEL AMPLIFIER

GM-D9705/XEVEL

GM-DX975/XEVEL



PIONEER CORPORATION 28-8, Honkomagome 2-chome, Bunkyo-ku, Tokyo 113-0021, Japan
PIONEER ELECTRONICS (USA) INC. P.O. Box 1760, Long Beach, CA 90801-1760, U.S.A.
PIONEER EUROPE NV Haven 1087, Keetberglaan 1, 9120 Melsele, Belgium
PIONEER ELECTRONICS ASIACENTRE PTE. LTD. 2 Jalan Kilang Barat, #07-01, Singapore 159346
©PIONEER CORPORATION 2019

K-ZZZ JAN. 2019

A

CAUTION


This service manual is intended for qualified service technicians; it is not meant for the casual do-it-yourselfer. Qualified technicians have the necessary test equipment and tools, and have been trained to properly and safely repair complex products such as those covered by this manual. Improperly performed repairs can adversely affect the safety and reliability of the product and may void the warranty. If you are not qualified to perform the repair of this product properly and safely, you should not risk trying to do so and refer the repair to a qualified service technician.

B

WARNING

This product may contain a chemical known to the State of California to cause cancer, or birth defects or other reproductive harm.
Health & Safety Code Section 25249.6 - Proposition 65

Where in a manufacturer’s service documentation, for example in circuit diagrams or lists of components, a symbol is used to indicate that a specific component shall be replaced only by the component specified in that documentation for safety reasons, the following symbol shall be used:



C

CONTENTS


■

SAFETY INFORMATION	2
1. SERVICE PRECAUTIONS	3
1.1 SAFETY PRECAUTIONS	3
1.2 NOTES ON DISASSEMBLY / ASSEMBLY	3
1.3 NOTES ON REPLACING PARTS	3
1.4 OTHERS	4
2. SPECIFICATIONS	5
D 2.1 SPECIFICATIONS.....	5
3. BASIC ITEMS FOR SERVICE.....	5
3.1 CHECK POINTS AFTER SERVICING.....	5
3.2 JIGS LIST	5
4. BLOCK DIAGRAM.....	5
■ 5. DIAGNOSIS.....	6
5.1 CONNECTOR FUNCTION DESCRIPTION.....	6
6. SERVICE MODE	6
7. DISASSEMBLY.....	7
8. EACH SETTING AND ADJUSTMENT	9
9. EXPLODED VIEWS AND PARTS LIST	10
E 9.1 PACKING SECTION	10
9.2 EXTERIOR SECTION.....	12
10. SCHEMATIC DIAGRAM	14
10.1 P.C.B TOTAL ASSY(MAIN).....	14
10.2 P.C.B TOTAL ASSY(SW-IN)	15
11. PCB CONNECTION DIAGRAM	16
■ 11.1 P.C.B TOTAL ASSY(MAIN).....	16
11.2 P.C.B TOTAL ASSY(SW-IN)	18
12. ELECTRICAL PARTS LIST	19

1. SERVICE PRECAUTIONS

1.1 SAFETY PRECAUTIONS

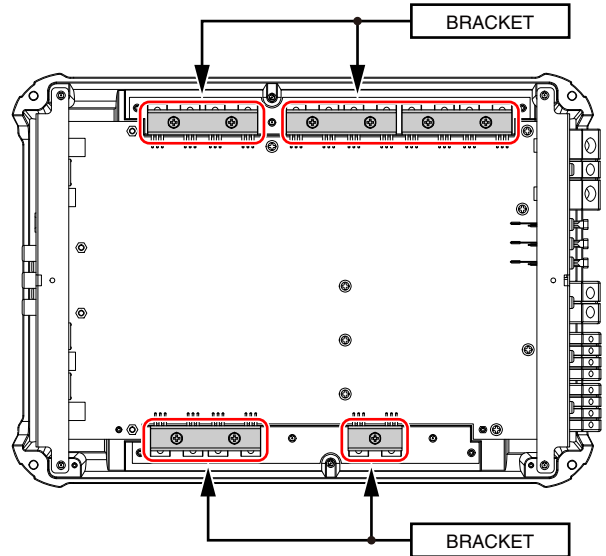
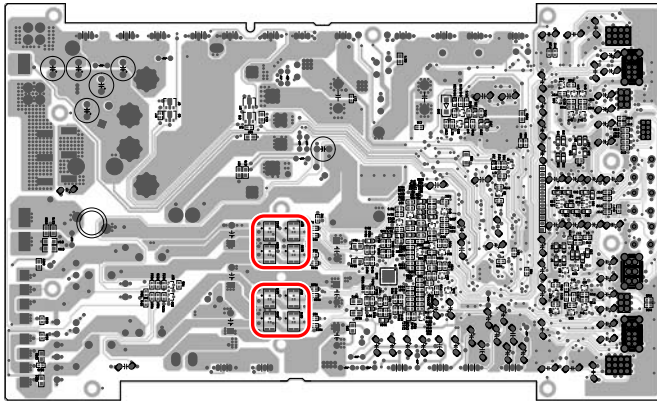


- You should conform to the regulations governing the product (safety, radio and noise, and other regulations), and should keep the safety during servicing by following the safety instructions described in this manual.
-  part and BRACKET becomes hot areas. Be careful not to burn yourself.

A

P.C.B TOTAL ASSY(MAIN)

Side B



1.2 NOTES ON DISASSEMBLY / ASSEMBLY

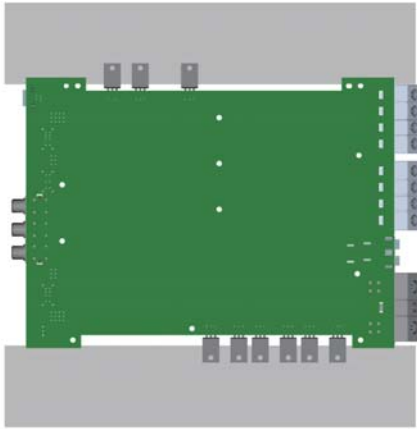
- Before disassembling the unit, be sure to turn off the power. Unplugging and plugging the connectors during power-on mode may damage the ICs inside the unit.
- Please be sure to conduct line process to original status if you make assembling after repair.

1.3 NOTES ON REPLACING PARTS

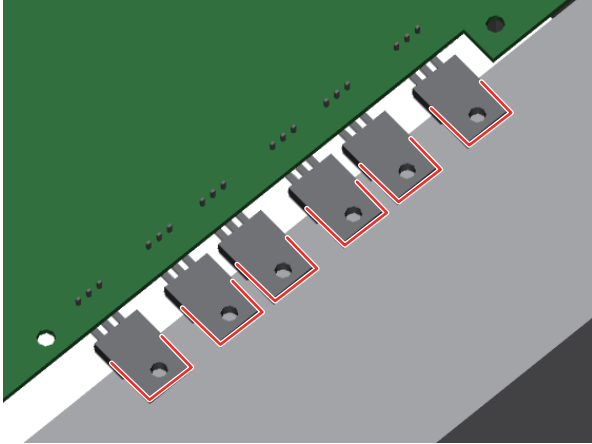
- Please be careful of not to apply static charge onto integrated circuits, etc, when you conduct repair work. Especially, please use soldering iron with its tip grounded. Also, please use a pair of tweezers with static charge protection capability if there is the possibility of contacting to device terminals, and avoid the use of metal-made tweezers.
- When the parts that are fixed by BRACKET (IC40, IC41, IC44, D42, D43, D44, D45, Q20, Q21, Q22, Q23, Q24, Q25, Q515, Q516, Q517 and Q518) replace, follow the below procedure.

Caution : While the picture shown is slightly different from this model in shape, the replacing procedure is the same.

Put the board on a block-shaped table.



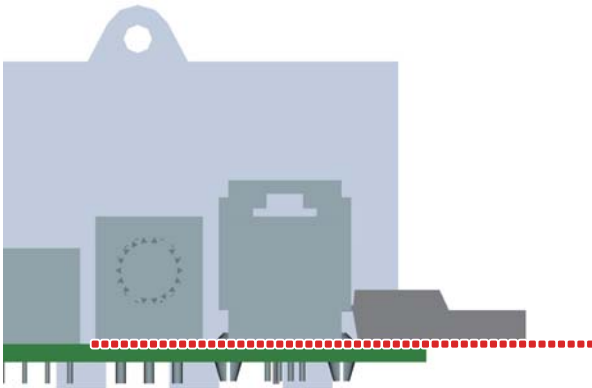
Put the paper between the board and the base, and outlines these parts on it.
Set the replacing parts to fit this line.



Adjust the height of the replaced parts to match the board and fix it with solder.



Apply silicon grease (GEM1057) to the backside of it.



1.4 OTHERS

● Notes on soldering

For environmental protection, lead-free solder is used on the printed circuit boards mounted in this unit.

Be sure to use lead-free solder and a soldering iron that can meet specifications for use with lead-free solders for repairs accompanied by reworking of soldering.

2. SPECIFICATIONS

2.1 SPECIFICATIONS

For all items except the backup current, refer to the Owner's Manual.
Backup current..... 1 mA or less

3. BASIC ITEMS FOR SERVICE

3.1 CHECK POINTS AFTER SERVICING

To keep the product quality after servicing, please confirm following check points.

No.		Procedures	Item to be confirmed
1		Confirm whether the customer complaint has been solved.	The customer complaint must not be reappeared. Audio and operations must be normal.
2		Check the output sound.	Audio and operations must be normal.
3		Appearance check	No scratches or dirt on its appearance after receiving it for service.

See the table below for the items to be checked regarding audio:

Item to be checked regarding audio
Distortion
Noise
Volume too low
Volume too high
Volume fluctuating
Sound interrupted

3.2 JIGS LIST

● Lubricants and Glues List

Name	Grease No.	Remarks
Grease	GEM1057	Applying to BRACKET
Bond	GYL1006	Applying to P.C.B TOTAL ASSY(MAIN)

4. BLOCK DIAGRAM

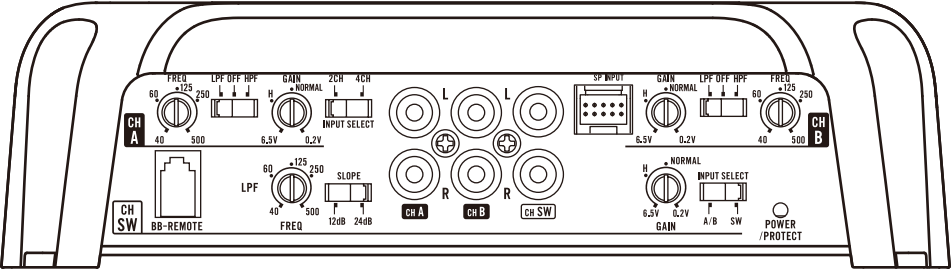
There is not information to be shown in this chapter.

5. DIAGNOSIS

5.1 CONNECTOR FUNCTION DESCRIPTION

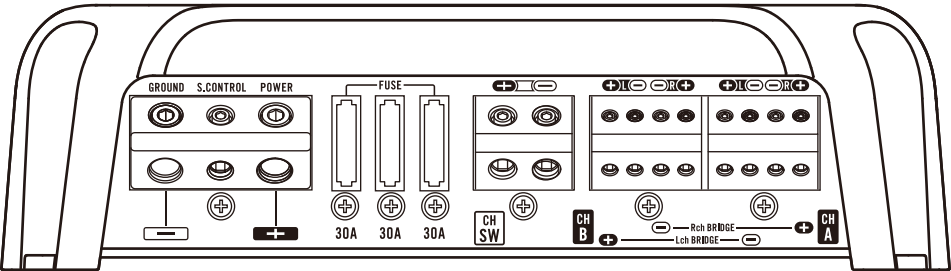
A

Front



B

Rear



C

6. SERVICE MODE

There is not information to be shown in this chapter.

D

E

F

7. DISASSEMBLY

Note:

While the photograph shown is slightly different from this model in shape, the disassembly procedure is the same.

● Removing the Chassis (Fig. 1)

- ➡ **1** Remove 6 pcs screw and then remove the Chassis.

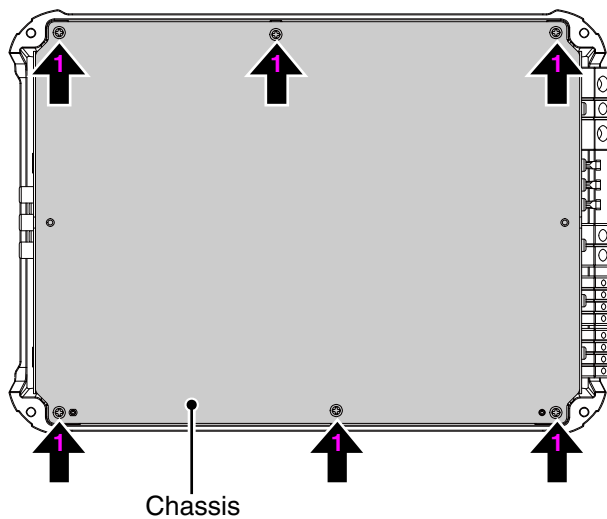


Fig. 1

● Removing the P.C.B TOTAL ASSY(SW-IN) (Fig. 2 and Fig. 3)

- ➡ **1** Remove 4 pcs screw.
- ➡ **2** Pull and remove the P.C.B TOTAL ASSY(SW-IN).

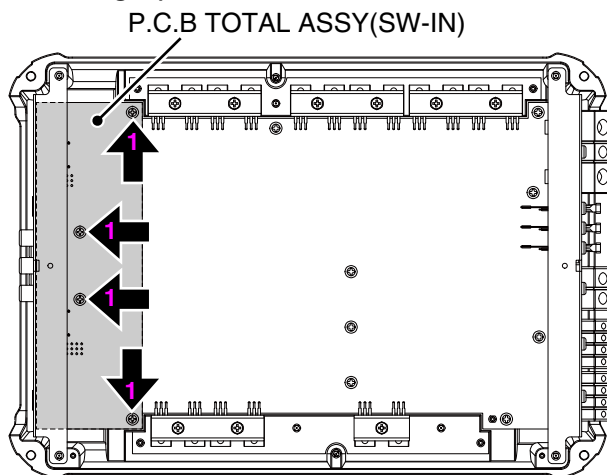


Fig. 2

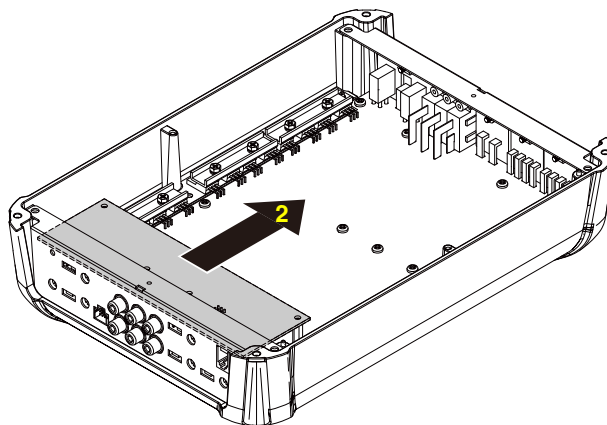


Fig. 3

A

● Removing the P.C.B TOTAL ASSY(MAIN) (Fig. 4 and Fig. 5)

- ➡ 1 Remove 9 pcs screw and remove BRACKET.
- ➡ 2 Remove a Thermistor with the bond.

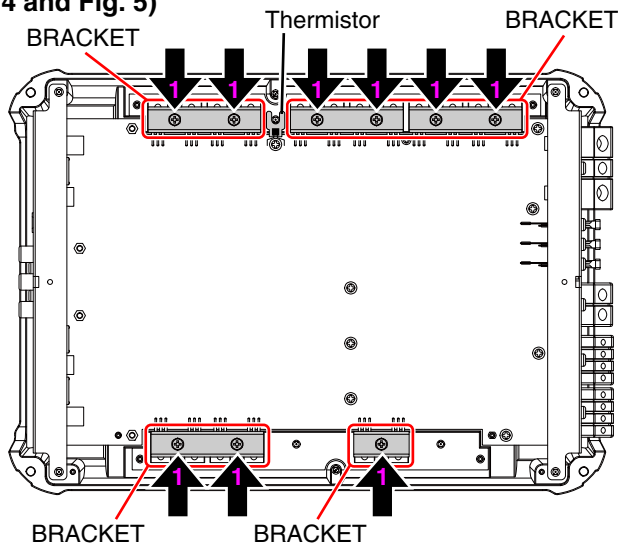
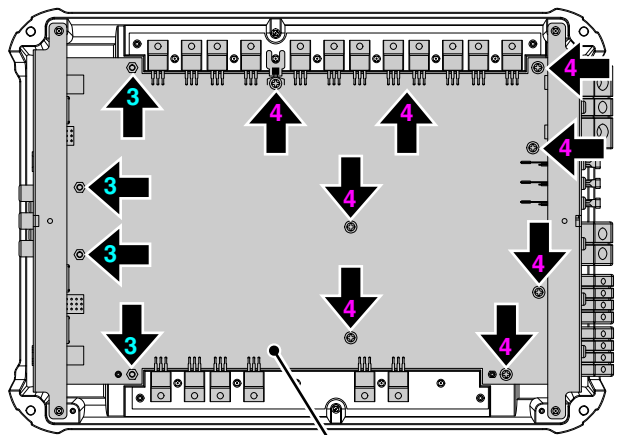


Fig. 4

B

C

- ➡ 3 Remove 4 pcs PCB supporter.
- ➡ 4 Remove 8 pcs screw and then remove the P.C.B TOTAL ASSY(MAIN).



P.C.B TOTAL ASSY(MAIN) Fig. 5

D

- Caution of Re-installation of the P.C.B TOTAL ASSY(MAIN)
- When the heatsink will be set, take care not to pinch the wire of Thermistor.

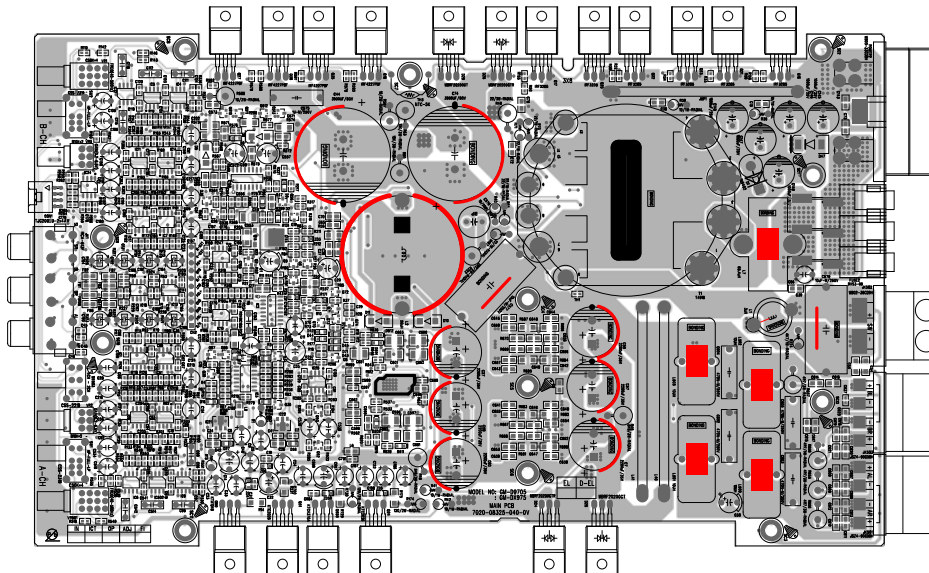


E

F



Bonding Position



○ : GYL1006


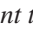
8. EACH SETTING AND ADJUSTMENT

There is not information to be shown in this chapter.

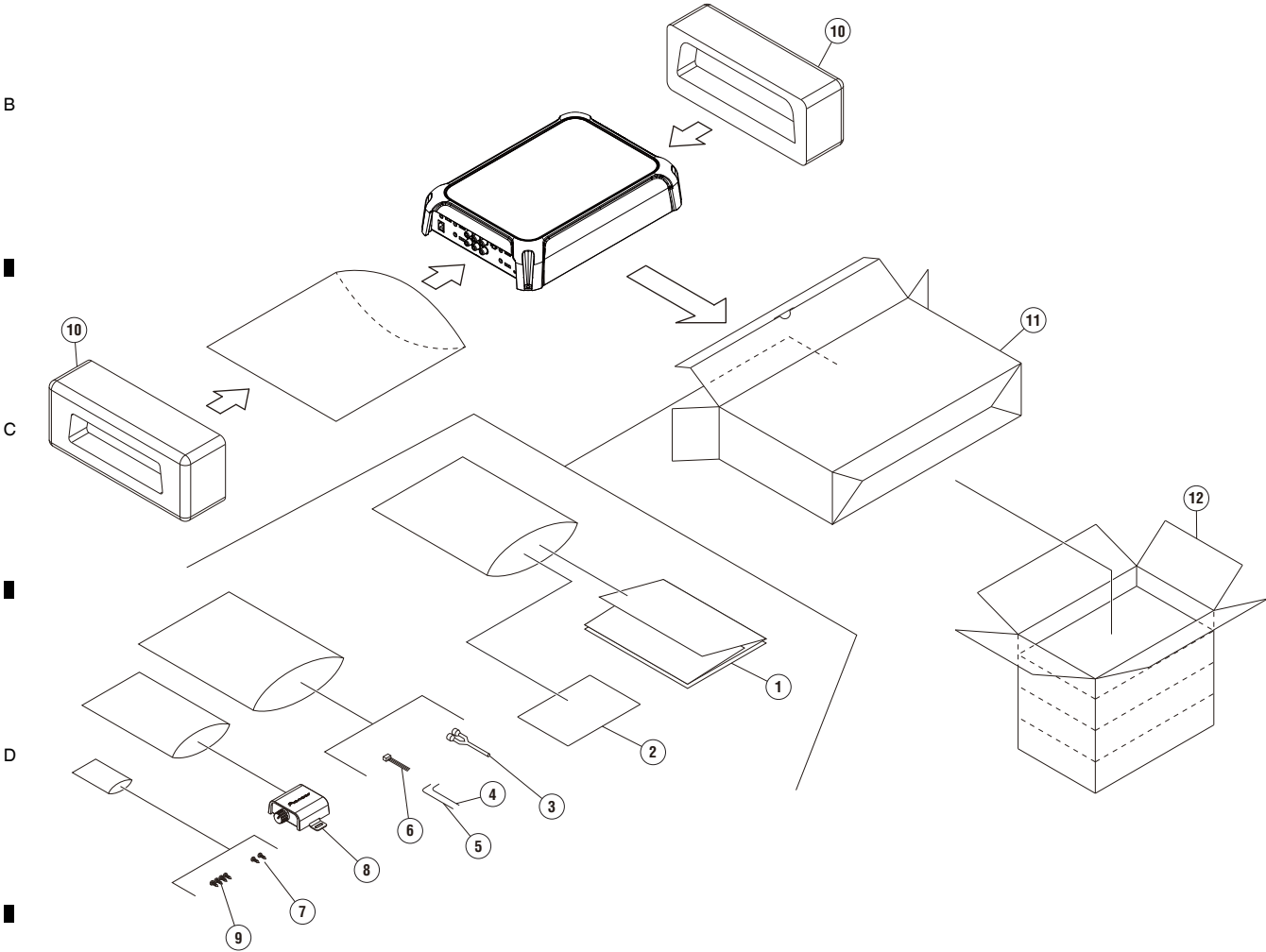
1234

9. EXPLODED VIEWS AND PARTS LIST

NOTES :

- Parts marked by " * " are generally unavailable because they are not in our Master Spare Parts List.
- The  mark found on some component parts indicates the importance of the safety factor of the part. Therefore, when replacing, be sure to use parts of identical designation.
- Screw adjacent to  mark on the product are used for disassembly.
- For the applying amount of lubricants or glue, follow the instructions in this manual.
(In the case of no amount instructions, apply as you think it appropriate.)

9.1 PACKING SECTION



(1) PACKING SECTION PARTS LIST

<u>Mark No.</u>	<u>Description</u>	<u>Part No.</u>	<u>Mark No.</u>	<u>Description</u>	<u>Part No.</u>
1-1	Owner's Manual	5707000013140V	10	Cushion,snow	6230214784000V
1-2	Owner's Manual	5707000013150V	11	Box,Gift	See Contrast table (2)
* 2	Warranty Card	5727000000581V	12	Box,Outer Carton	See Contrast table (2)
3	Speaker Input Wire with RCA Pin Cord	L008200082200S			
4	Hexagonal Wrench (S: 3 mm)	1580210036000V			
5	Hexagonal Wrench (S: 1.5 mm)	1580210016000V			
6	Cable Assy	L308121040010S			
7	Screw,Tapping (3 mm x 10 mm)	B010430103B10V			
8	Bass Boost Remote Control	7025CX1801100			
9	Screw,Tapping (4 mm x 18 mm)	B010440183B10V			

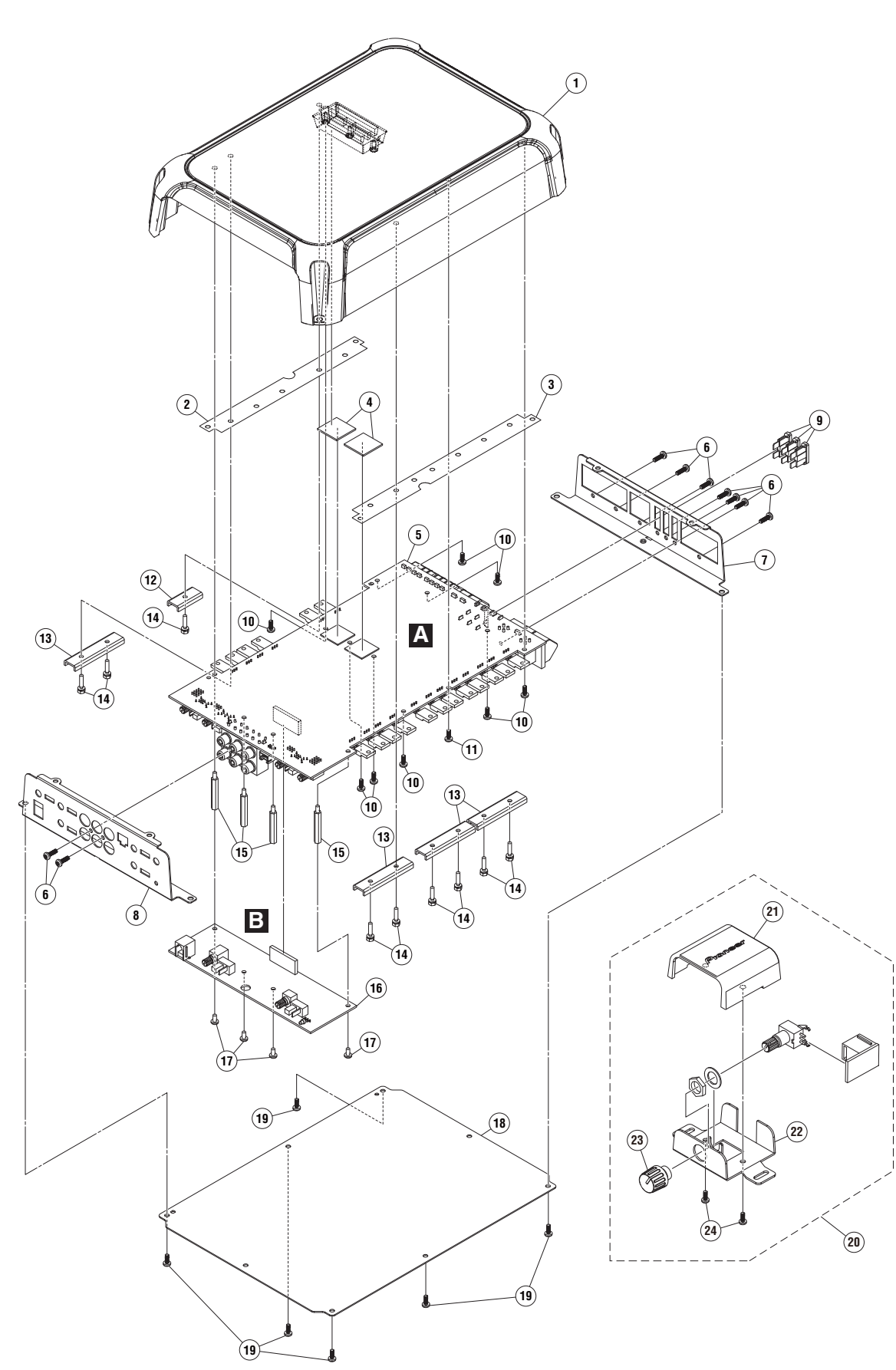
(2) CONTRAST TABLE

GM-D9705/XEVEL and GM-DX975/XEVEL are constructed the same except for the following:

Mark	No.	Description	GM-D9705/XEVEL	GM-DX975/XEVEL
	11	Box,Gift	6007213670060V	6007213670070V
	12	Box,Outer Carton	6027211100060V	6027211100070V

Owner's Manual

Part No.	Language
5707000013140V	English, French
5707000013150V	Spanish(Espanol), Arabic



(1) EXTERIOR SECTION PARTS LIST

Mark No.	Description	Part No.	Mark No.	Description	Part No.
1	Heat Sink Assy	See Contrast table (2)	16	P.C.B Total Assy(SW-IN)	See Contrast table (2)
2	Sheet	1210213519000V	17	Screw, Tap Tite	B020930061B10SV
3	Sheet	1210213529000V	18	Chassis	3200215766000V
4	Sheet	1210213559000V	19	Screw, Tap Tite	B020030103B10SV
5	P.C.B Total Assy(MAIN)	See Contrast table (2)	20	Bass Boost Total Assy	3208215826000
6	Screw, Tap Tite	B020030103B10SV	21	Case	3030212091000V
7	Chassis	3207215816000V	22	Chassis	3207215826000V
8	Chassis	3207215796000V	23	Knob	5080213151000V
9	Fuse, Auto (30 A)	G655303320110S	24	Screw, Tap Tite	B020026103B10V
10	Screw, Tap Tite	B020030081W10SV			
11	Screw, Tap Tite	B020030081B10SV			
12	Bracket	4010216766000V			
13	Bracket	4010216766100V			
14	Screw	1507041146010SV			
15	Supporter	4070212667000V			

(2) CONTRAST TABLE

GM-D9705/XEVEL and GM-DX975/XEVEL are constructed the same except for the following:

Mark	No.	Description	GM-D9705/XEVEL	GM-DX975/XEVEL
	1	Heat Sink Assy	7025CX1801119	7025CX180111A
	5	P.C.B Total Assy(MAIN)	7025CX1810010	7025CX1811010
	16	P.C.B Total Assy(SW-IN)	7025CX1810011	7025CX1811011

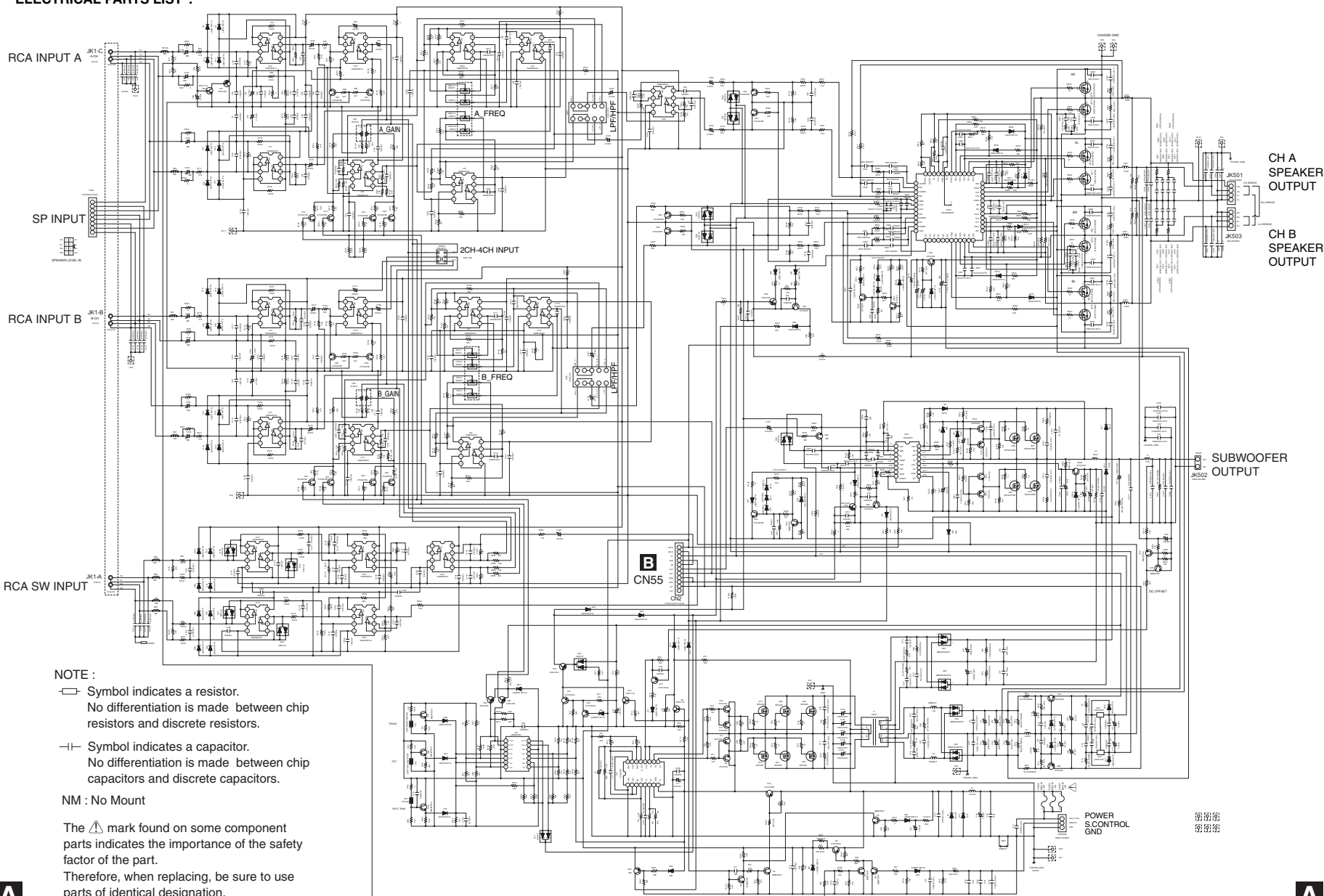
10. SCHEMATIC DIAGRAM

10.1 P.C.B TOTAL ASSY(MAIN)

A P.C.B TOTAL ASSY(MAIN)

10. SCHEMATIC DIAGRAM

Note: When ordering service parts, be sure to refer to "EXPLODED VIEWS AND PARTS LIST" or "ELECTRICAL PARTS LIST".



GM-D9705/XEVEL

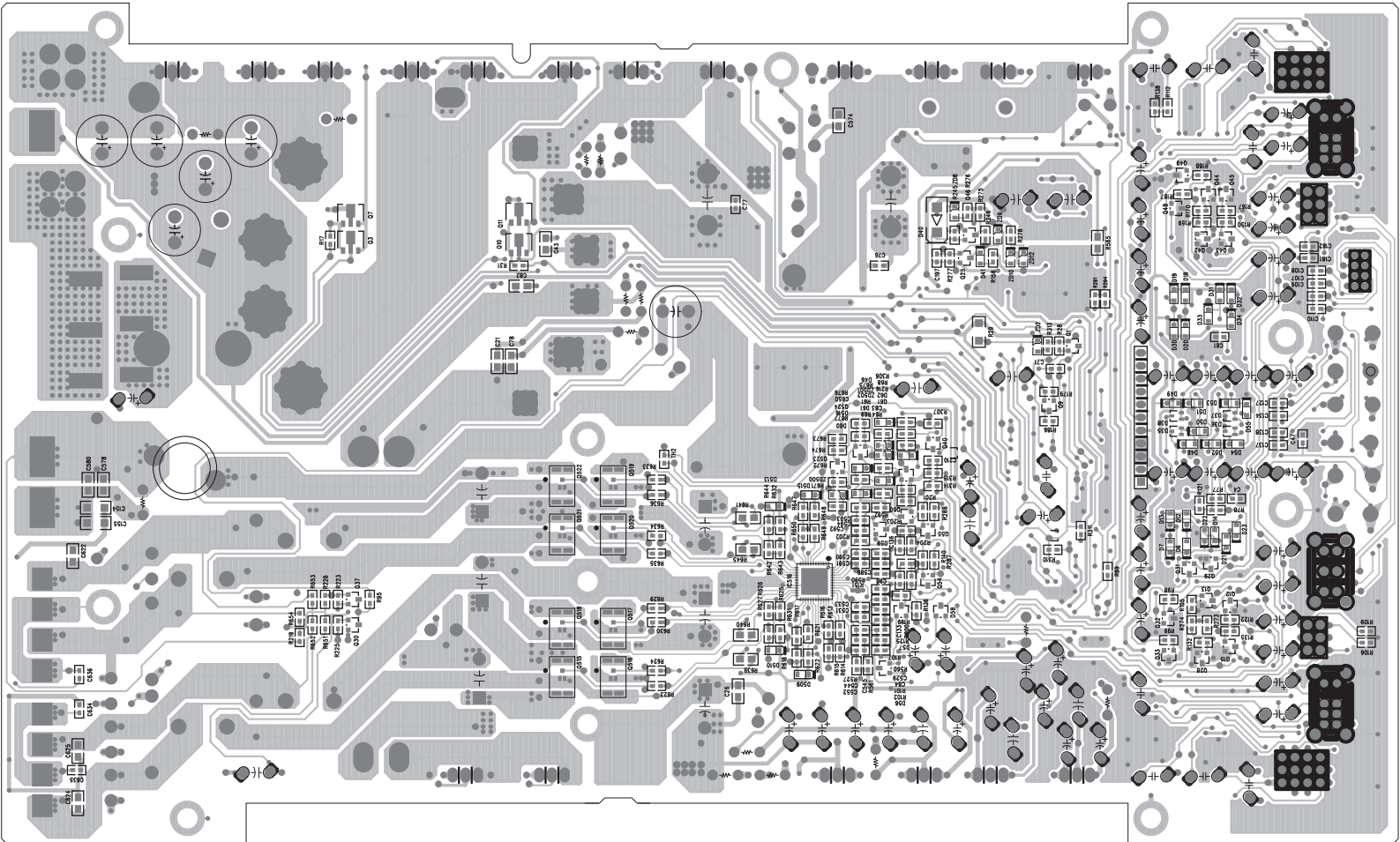
B



LED INDICATOR
POWER: BLUE
PROTECT: RED

32

SIDE B



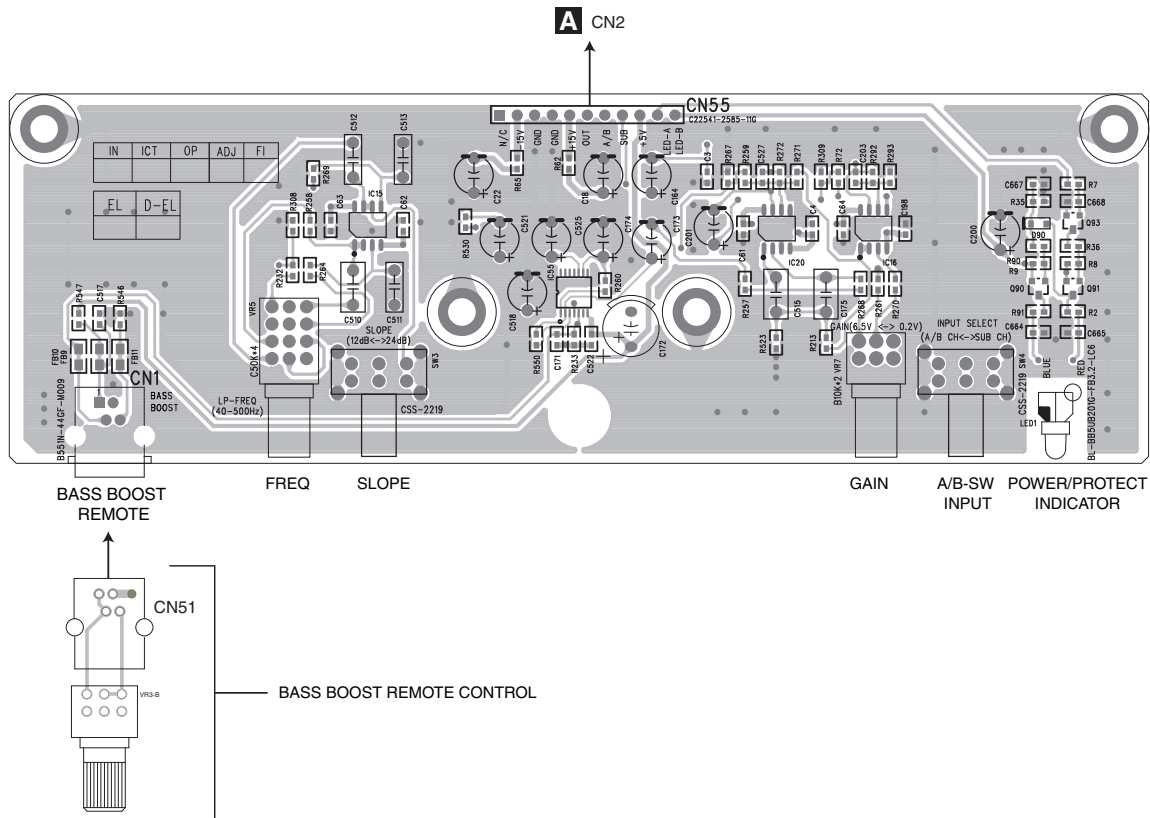
A P.C.B TOTAL ASSY(MAIN)

GM-D9705/XEVEL

11.2 P.C.B TOTAL ASSY(SW-IN)

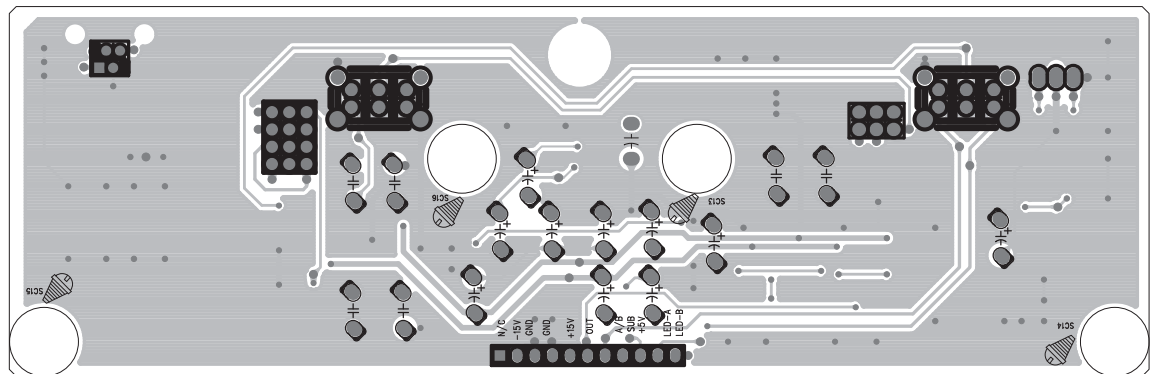
B P.C.B TOTAL ASSY(SW-IN)

SIDE A



B P.C.B TOTAL ASSY(SW-IN)

SIDE B



12. ELECTRICAL PARTS LIST

NOTE:

- Parts whose parts numbers are omitted are subject to being not supplied.
- The part numbers shown below indicate chip components.

Chip Resistor

RS1/○S○○○○J,RS1/○○S○○○○J

Chip Capacitor (except for CQS.....)

CKS....., CCS....., CSZS.....

- Parts marked by " * " are generally unavailable because they are not in our Master Spare Parts List.
- The ⚠ mark found on some component parts indicates the importance of the safety factor of the part. Therefore, when replacing, be sure to use parts of identical designation.
- The expression of the unit in this manual is shown by u instead of μ . Please do not make a mistake.

Circuit Symbol and No.		Part No.	Circuit Symbol and No.		Part No.
A:GM-D9705/XEVEL			IC 502	IC,LINEAR OP	J121458000050S
B:GM-DX975/XEVEL			IC 516	IC,ANALOG	J080209301010S
Unit Number : 7025CX1810010 (A)			Q 1	SEMI,CHIP TR/NPN 2SC	J522555100010S
Unit Number : 7025CX1811010 (B)			Q 2	SEMI,CHIP TR/NPN 2SC	J522555100010S
Unit Name : P.C.B TOTAL ASSY(MAIN)			Q 3	SEMI,CHIP TR/NPN 2SC	J522437900010S
Unit Number : 7025CX1810011 (A)			Q 4	SEMI,CHIP TR/PNP 2SA	J520015040150S
Unit Number : 7025CX1811011 (B)			Q 5	SEMI,CHIP TR/NPN 2SC	J522555100010S
Unit Name : P.C.B TOTAL ASSY(SW-IN)			Q 6	SEMI,CHIP TR/NPN 2SC	J522555100010S
			Q 7	SEMI,CHIP TR/PNP 2SA	J520166600010S
			Q 8	SEMI,CHIP TR/NPN 2SC	J522011100210S
			Q 9	SEMI,CHIP TR/NPN 2SC	J522555100010S
			Q 10	SEMI,CHIP TR/NPN 2SC	J522437900010S
			Q 11	SEMI,CHIP TR/PNP 2SA	J520166600010S
			Q 12	SEMI,CHIP TR/NPN 2SC	J5222875B0010S
			Q 13	SEMI,CHIP TR/NPN 2SC	J5222875B0010S
			Q 14	SEMI,TR/GE PNP 2SA	J5001040D0210S
			Q 15	SEMI,CHIP TR/NPN 2SC	J5222875B0010S
			Q 16	SEMI,FET/2SN	J544320502010S
			Q 17	SEMI,FET/2SN	J544320502010S
			Q 18	SEMI,FET/2SN	J540422701010S
			Q 19	SEMI,CHIP TR/NPN 2SC	J522010200210S
			Q 20	SEMI,FET/2SN	J544320502010S
			Q 21	SEMI,FET/2SN	J544320502010S
			Q 22	SEMI,FET/2SN	J544320502010S
			Q 23	SEMI,FET/2SN	J544320502010S
			Q 24	SEMI,TR/GE NPN 2SD	J5032026Y0010S
			Q 25	SEMI,CHIP TR/NPN 2SC	J5222875B0010S
			Q 27	SEMI,FET/P 2SJ	J540422701010S
			Q 28	SEMI,CHIP TR/NPN 2SC	J5222875B0010S
			Q 29	SEMI,CHIP TR/NPN 2SC	J522011100210S
			Q 30	SEMI,CHIP TR/NPN 2SC	J522555100010S
			Q 31	SEMI,CHIP TR/PNP 2SA	J520010500210S
			Q 32	SEMI,CHIP TR/NPN 2SC	J5222875B0010S
			Q 33	SEMI,CHIP TR/NPN 2SC	J5222875B0010S
			Q 34	SEMI,CHIP TR/NPN 2SC	J522555100010S
			Q 35	SEMI,FET/P 2SJ	J540422701010S
			Q 36	SEMI,CHIP TR/NPN 2SC	J522555100010S
			Q 37	SEMI,CHIP TR/NPN 2SC	J522555100010S
			Q 38	SEMI,FET/P 2SJ	J540422701010S
			Q 39	SEMI,CHIP TR/NPN 2SC	J522555100010S
			Q 42	SEMI,CHIP TR/NPN 2SC	J5222875B0010S
			Q 43	SEMI,CHIP TR/NPN 2SC	J5222875B0010S
			Q 44	SEMI,CHIP TR/NPN 2SC	J5222875B0010S
MISCELLANEOUS					
IC 1	IC,LINEAR OP	J121458000050S			
IC 2	IC,ANALOG	J080004940090S			
IC 3	IC,LINEAR OP	J121290100010S			
IC 4	IC,LINEAR OP	J121458000050S			
IC 5	IC,LINEAR OP	J121458000050S			
IC 6	IC,LINEAR OP	J121458000050S			
IC 7	IC,LINEAR OP	J121458000050S			
IC 8	IC,LINEAR OP	J121458000050S			
IC 9	IC,LINEAR OP	J121458000050S			
IC 10	IC,LINEAR OP	J121458000050S			
IC 11	IC,LINEAR OP	J121458000050S			
IC 12	IC,LINEAR OP	J121458000050S			
IC 13	IC,LINEAR OP	J121458000050S			
IC 14	IC,LINEAR OP	J121458000050S			
IC 17	IC,LINEAR OP	J121458000050S			
IC 18	IC,LINEAR OP	J121458000050S			
IC 19	IC,LINEAR OP	J121458000050S			
IC 21	IC,LINEAR-REGULATOR	J126790500570S			
IC 22	IC,LINEAR-REGULATOR	J126780500570S			
IC 23	IC,LINEAR OP	J121458000050S			
IC 24	IC,LINEAR OP	J121458000050S			
IC 25	IC,LINEAR OP	J121458000050S			
IC 51	IC,LINEAR OP	J121458000050S			
IC 58	IC,ANALOG	J080209201010S			

Circuit Symbol and No.**Part No.****Circuit Symbol and No.****Part No.**

Q 45	SEMI,CHIP TR/NPN 2SC	J5222875B0010S
Q 46	SEMI,CHIP TR/NPN 2SC	J522555100010S
Q 48	SEMI,CHIP TR/NPN 2SC	J5222875B0010S
Q 49	SEMI,CHIP TR/NPN 2SC	J5222875B0010S
Q 50	SEMI,TR/GE PNP 2SA	J5001046Y0210S
Q 51	SEMI,TR/GE NPN 2SD	J5032026Y0010S
Q 52	SEMI,CHIP TR/NPN 2SC	J5222875B0010S
Q 53	SEMI,CHIP TR/NPN 2SC	J5222875B0010S
Q 54	SEMI,CHIP TR/NPN 2SC	J5222875B0010S
Q 55	SEMI,CHIP TR/NPN 2SC	J5222875B0010S
Q 56	SEMI,CHIP TR/NPN 2SC	J5223875Y0210S
Q 60	SEMI,CHIP TR/NPN 2SC	J522010200210S
Q 61	SEMI,CHIP TR/NPN 2SC	J5223875Y0210S
Q 70	SEMI,CHIP TR/PNP 2SA	J520010500210S
Q 71	SEMI,CHIP TR/PNP 2SA	J520015040150S
Q 72	SEMI,CHIP TR/PNP 2SA	J520015040150S
Q 73	SEMI,CHIP TR/NPN 2SC	J522011100210S
Q 74	SEMI,CHIP TR/PNP 2SA	J520015040150S
Q 86	SEMI,CHIP TR/PNP 2SA	J520010500210S
Q 87	SEMI,CHIP TR/PNP 2SA	J520010500210S
Q 510	SEMI,CHIP TR/PNP 2SA	J520322300010S
Q 511	SEMI,CHIP TR/PNP 2SA	J520312300010S
Q 512	SEMI,CHIP TR/PNP 2SA	J520322300010S
Q 513	SEMI,CHIP TR/PNP 2SA	J520312300010S
Q 515	SEMI,FET/P 2SJ	J540677501010S
Q 516	SEMI,FET/P 2SJ	J540677501010S
Q 517	SEMI,FET/P 2SJ	J540677501010S
Q 518	SEMI,FET/P 2SJ	J540677501010S
Q 519	SEMI,FET/P 2SJ	J540677501010S
Q 520	SEMI,FET/P 2SJ	J540677501010S
Q 521	SEMI,FET/P 2SJ	J540677501010S
Q 522	SEMI,FET/P 2SJ	J540677501010S
Q 523	SEMI,CHIP TR/NPN 2SC	J5223875Y0210S
Q 524	SEMI,CHIP TR/NPN 2SC	J5223875Y0210S
Q 558	SEMI,TR/GE NPN 2SC	J5024370A0010S
D 1	D,RECTIFIER 1N	K040154020010S
D 2	D,SWITCHING CHIP	K005041480230S
D 3	D,SWITCHING CHIP	K005041480230S
D 4	D,SWITCHING CHIP	K005041480230S
D 5	D,FAST RECOVERY	K050010200040S
D 6	D,SWITCHING CHIP	K005041480230S
D 7	D,SWITCHING CHIP	K005041480230S
D 8	D,FAST RECOVERY	K050010200040S
D 10	D,FAST RECOVERY	K050010200040S
D 11	D,FAST RECOVERY	K050010200040S
D 12	D,SWITCHING CHIP	K005041480230S
D 13	D,SWITCHING CHIP	K005041480230S
D 14	D,SWITCHING CHIP	K005041480230S
D 15	D,SWITCHING CHIP	K005041480230S
D 16	D,SWITCHING CHIP	K005041480230S
D 17	D,SWITCHING CHIP	K005012101010S
D 18	D,SWITCHING CHIP	K005041480230S
D 19	D,SWITCHING CHIP	K005041480230S
D 20	D,SWITCHING CHIP	K005041480230S
D 21	D,SWITCHING CHIP	K005041480230S
D 22	D,SWITCHING CHIP	K005041480230S
D 23	D,SWITCHING CHIP	K005041480230S
D 24	D,SCHOTTKY	K120020200050S
D 25	D,SCHOTTKY	K120020200040S

D 26	D,SWITCHING CHIP	K005041480230S
D 27	D,SWITCHING CHIP	K005041480230S
D 28	D,SCHOTTKY	K120020200050S
D 29	D,SCHOTTKY	K120020200040S
D 30	D,SWITCHING CHIP	K005041480230S
D 31	D,SWITCHING CHIP	K005041480230S
D 32	D,SWITCHING CHIP	K005041480230S
D 33	D,SWITCHING CHIP	K005041480230S
D 34	D,SWITCHING CHIP	K005041480230S
D 35	D,SWITCHING CHIP	K005012201010S
D 36	D,SWITCHING CHIP	K005012201010S
D 37	D,SWITCHING CHIP	K005012201010S
D 38	D,SWITCHING CHIP	K005012201010S
D 39	D,SWITCHING CHIP(A)	K005012201010S
D 41	D,SWITCHING CHIP	K005041480230S
D 42	D,SWITCHING CHIP	K005041480230S
D 43	D,SWITCHING CHIP	K005041480230S
D 44	D,SWITCHING CHIP	K005041480230S
D 45	D,SWITCHING CHIP	K005041480230S
D 48	D,SWITCHING CHIP	K005041480230S
D 49	D,SWITCHING CHIP	K005041480230S
D 50	D,SWITCHING CHIP	K005041480230S
D 51	D,SWITCHING CHIP	K005041480230S
D 52	D,SWITCHING CHIP	K005041480230S
D 53	D,SWITCHING CHIP	K005041480230S
D 54	D,SWITCHING CHIP	K005041480230S
D 55	D,SWITCHING CHIP	K005041480230S
D 56	D,SWITCHING CHIP(A)	K005012201010S
D 57	D,SWITCHING CHIP(A)	K005012201010S
D 58	D,SWITCHING CHIP(A)	K005012201010S
D 59	D,SWITCHING CHIP(A)	K005012201010S
D 60	D,SWITCHING CHIP	K005041480230S
D 61	D,SWITCHING CHIP	K005041480230S
D 62	D,SWITCHING CHIP	K005041480230S
D 70	D,SWITCHING CHIP	K005012101010S
D 71	D,SWITCHING CHIP	K005041480230S
D 80	D,SWITCHING CHIP	K005041480230S
D 508	D,SWITCHING CHIP	K005041480230S
D 509	D,SWITCHING CHIP	K005041480230S
D 510	D,SWITCHING CHIP	K005041480230S
D 511	D,SWITCHING CHIP	K005041480230S
D 512	D,SWITCHING CHIP	K005041480230S
D 513	D,SWITCHING CHIP	K005041480230S
D 514	D,SWITCHING CHIP	K005041480230S
D 515	D,SWITCHING CHIP	K005041480230S
D 516	D,SWITCHING CHIP	K005041480230S
L 1	COIL,CHOKE 3 uH	D300030000010S
L 2	COIL,CHOKE 50 uH	D300500000010S
L 7	COIL,FILTER-INDUCTOR 65.4 uH	D330654100010V
L 40	CN,WIRE 1P	L045060300010S
L 41	CN,WIRE 1P	L045060300010S
L 500	COIL,TOROIDAL(RING) 10 uH	D305010350010S
L 501	COIL,TOROIDAL(RING) 10 uH	D305010350010S
L 502	COIL,TOROIDAL(RING) 10 uH	D305010350010S
L 503	COIL,TOROIDAL(RING) 10 uH	D305010350010S
*T 1	POWER TRANS	8200491900020V
TH1	POSISTOR	F320184710051S
TH2	POSISTOR	F320471000950S
TH3	THERMISTOR	F340550200020S

5		6		7		8	
Circuit Symbol and No.		Part No.		Circuit Symbol and No.		Part No.	
SW1	SW,SLIDE(A_LPF/HPF)	G060231900020S		R 730	CAPACITORS	N113136665210S	A
SW2	SW,SLIDE(B_LPF/HPF)	G060231900020S					
SW503	SW,SLIDE(2CH-4CH INPUT)	G060221900020S					
VR1	VR,ROTARY 50 kohm (B_FREQ)	C450105300040S					
VR2	VR,ROTARY 10 kohm (A_GAIN)	C450101300050S					
VR3	VR,ROTARY 10 kohm (B_GAIN)	C450101300050S		C 1		D041221083230S	
VR501	VR,ROTARY 50 kohm (A_FREQ)	C450105300040S		C 5		D041100087230S	
CN2	CN.WAFER 2.5MM	L102125411190S		C 7		D041222085230S	
ZD1	D,ZENER CHIP	K06608R24P430S		C 9		D041100087230S	
ZD2	D,ZENER CHIP	K06615R04P430S		C 11		D041101083240S	
ZD3	D,ZENER CHIP	K06607R54P430S		C 14		D040470087220S	
ZD4	D,ZENER CHIP	K06616R04P430S		C 16		D041100087230S	
ZD5	D,ZENER CHIP	K06611R04P430S		C 20		D041101084230S	
ZD6	D,ZENER CHIP	K06616R04P430S		C 23		D041470084230S	
ZD7	D,ZENER CHIP	K06609R14P430S		C 24		D041470084230S	B
ZD8	D,ZENER CHIP	K06618R04P430S		C 27		D041222085230S	
ZD9	D,ZENER CHIP	K06636R04P430S		C 28		D0414R7087230S	
ZD10	D,ZENER CHIP	K06636R04P430S		C 32		D040470087220S	
ZD11	D,ZENER CHIP	K06605R14P430S		C 33		D041470084230S	
ZD12	D,ZENER CHIP	K06622R04P430S		C 40		D041470084230S	
ZD58	D,ZENER CHIP	K06611R04P430S		C 44		D04039208B000S	
ZD500	D,ZENER CHIP	K06605R64P430S		C 50		D041101084230S	
ZD501	D,ZENER CHIP	K06636R04P430S		C 51		D0414R7087230S	
ZD502	D,ZENER CHIP	K06605R64P430S		C 56		D041220087230S	
CON1	CN.WAFER 2.0 MM(SP INPUT)	L101080010010S		C 57		D041222085230S	
JK1	TER,RCA 6PIN(A)	G603613F00000S		C 58		D041222085230S	C
JK1	TER,RCA 6PIN(B)	G603613FG0000S		C 59		D041222085230S	
JK501	TER,BOARD SCREW	G6180JSZ40900S		C 60		D041222085230S	
JK502	TER,BOARD SCREW	G6180WB020360S		C 66		D041100087230S	
JK503	TER,BOARD SCREW	G6180JSZ40900S		C 68		D02468306C060S	
POWER2	TER,BOARD SCREW	G6180WB030330S		C 74		D04039208B000S	
⚠FUSE2	HOLDER,FUSE 30 A	G6400BXS30100S		C 91		D0414R7087230S	
JMP1	CN,WIRE 1P	L045060300010S		C 92		D041220087230S	
				C 95		D02468306C060S	
				C 105		D041470084230S	
RESISTORS				C 106		D041470084230S	D
R 1		N113136665210S		C 111		D02468306C060S	
R 13		N113136665210S		C 112		D02468306C060S	
R 38		N113138610010S		C 114		D041220087230S	
R 39		N113138610010S		C 115		D02468306C060S	
R 40		N113138622010S		C 118		D02468306C060S	
R 41		N113138610010S		C 122		D041220087230S	
R 42		N113138610010S		C 124		D0414R7087230S	
R 45		C120056267000S		C 145 (A)		D041102084050S	
R 46		C120056267000S		C 145 (B)		D041102084041S	
R 49		N113138622020S		C 146 (A)		D041102084050S	
R 54		N113138622010S		C 146 (B)		D041102084041S	E
R 60		N113038610210S		C 147 (A)		D041102084050S	
R 63		N113038610210S		C 147 (B)		D041102084041S	
R 70		N113138622010S		C 148 (A)		D041102084050S	
R 71		N113138622010S		C 148 (B)		D041102084041S	
R 174		N113136665210S		C 149 (A)		D041102084050S	
R 197		N113138622010S		C 149 (B)		D041102084041S	
R 222		C1202R2069000S		C 151		D0414R7087230S	
R 224		N113138647210S		C 153		D02410206C060S	
R 586		N113138610020S		C 157		D041470085230S	
R 587		N113138610020S		C 158		D041220087230S	
R 655		N113138647030S		C 180		D041220087230S	F
R 656		N113138647030S		C 186		D041470084230S	
R 657		N113138647030S		C 215		D041330087230S	
R 658		N113138647030S					

Circuit Symbol and No.Part No.

C 216	D041330087230S
C 217	D041330087230S
C 218	D041330087230S
C 514	D02468306C060S
C 516	D041470084230S

C 534	D041470084230S
C 538	D041470084230S
C 539	D041470084230S
C 542	D02468306C060S
C 557	D041101084230S

C 572	D041221084230S
C 576	D04110008H050S
C 575	D02410506H060S
C 577	D02410606H060S
C 579	D02410606H060S

C 602	D02447406H060S
C 603	D02447406H060S
C 604	D02447406H060S
C 605	D02447406H060S
C 697	D041470084230S

C 699	D04122008C230S
-------	----------------

Circuit Symbol and No.Part No.Miscellaneous Parts List

VR3	VR,ROTARY 10 kohm (BASS BOOST)	C450901100010S
CN51	JACK,MODULAR	G4060RJ220010S

B**Unit Number: 7025CX1810011 (A)****Unit Number: 7025CX1811011 (B)****Unit Name : P.C.B TOTAL ASSY(SW-IN)**MISCELLANEOUS

IC 15	IC,LINEAR OP	J121458000050S
IC 16	IC,LINEAR OP	J121458000050S
IC 20	IC,LINEAR OP	J121458000050S
IC 55	IC,LINEAR OP	J121217201010S
LED1	LED,ROUND	K500032601140S

SW3	SW,SLIDE(SLOPE)	G060221900020S
SW4	SW,SLIDE(A/B-SW INPUT)	G060221900020S
VR5	VR,ROTARY 50 kohm (FREQ)	C450105300040S
VR7	VR,ROTARY 10 kohm (GAIN)	C450101300050S
CN1	JACK,MODULAR	G4060RJ220010S

CN55	CN.WAFER 2.5 MM	L102225422290S
------	-----------------	----------------

CAPACITORS

C 18	D041100087230S
C 22	D041100087230S
C 164	D041220087230S
C 172	D041471083230S
C 173	D041220087230S

C 174	D041010087230S
C 175	D02418406C060S
C 200	D041470084230S
C 201	D041220087230S
C 510	D02410406C060S

C 511	D02456306C060S
C 512	D02468306C060S
C 513	D02427306C060S
C 515	D02418406C060S
C 518	D041101083240S

C 521	D041100087230S
C 525	D0412R2087230S