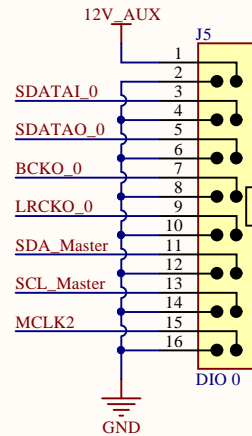
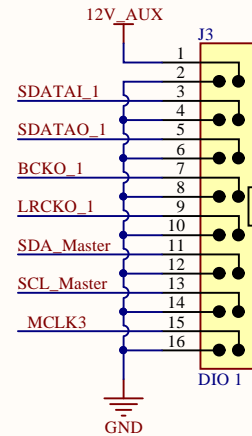


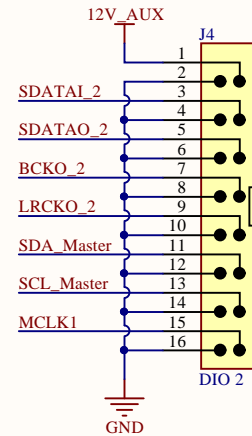
FreeDSP Connector 0




FreeDSP Connector 1

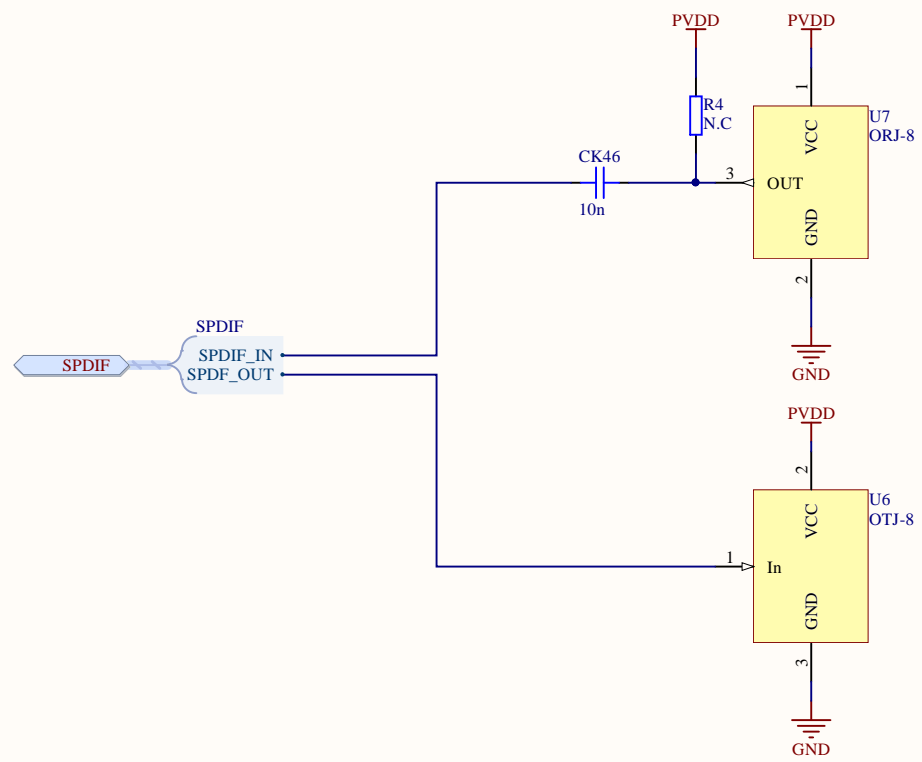


FreeDSP Connector 2




Title <i>I/O Connectors</i>			<i>FreeDSP</i> * * * *	
Size: <i>A4</i>	Number: <i>12</i>	Revision: <i>*</i>		
Date: <i>17.10.2016</i>	Time: <i>20:29:10</i>	Sheet <i>12</i> of <i>16</i>		
File: <i>C:\Projekty\ PiDSPBig\PCB\IOConn.SchDoc</i>				

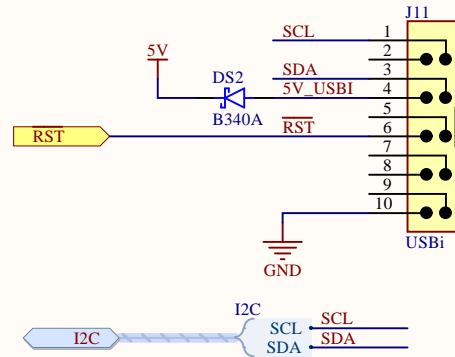
SPDIF I/O



▲ SPDIF IN & OUT
Toslink optical connector - SPDIF input for PC,TV, gaming console etc. Stereo only. Input is fed through ASRC in ADAU.

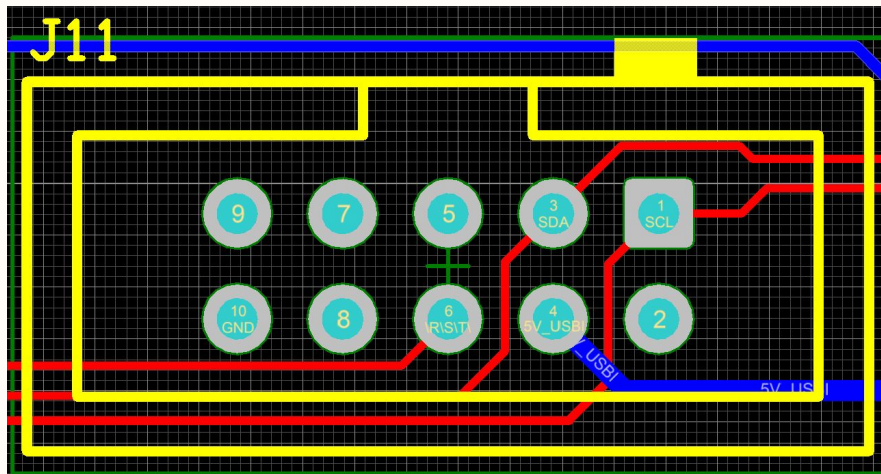
Title <i>Title</i>			<div>*</div> <div>*</div> <div>*</div> <div>*</div>	
Size: A4	Number:13	Revision:*		
Date: 17.10.2016	Time: 20:29:10	Sheet 13 of 16		
File: C:\Projekty\ PiDSPBig\PCB\SPDIF.SchDoc				

USBi connector



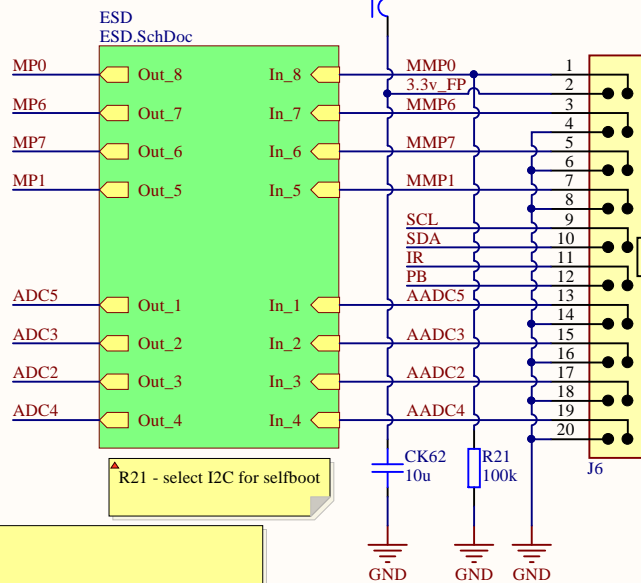
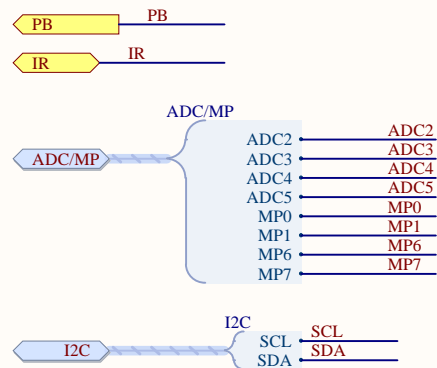
Programing connector for USBi

Use it to program your DSP. PiDSP can be powered from USBi.
Power is NOT provided to other modules connected via FreeDSP connector



Title <i>Title</i>			<div><div>*</div><div>*</div><div>*</div><div>*</div></div> <div>Altium[®]</div>
Size: A4	Number:14	Revision:*	
Date: 17.10.2016	Time: 20:29:10	Sheet 14 of 16	
File: C:\Projekty\ PiDSPBig\PCB\USBi.SchDoc			

Front Panel Connector



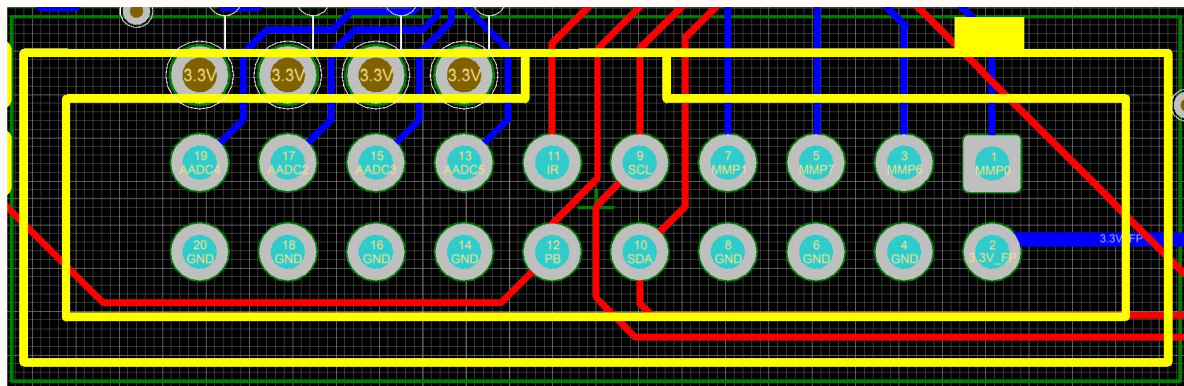
R21 - select I2C for selfboot

Front Panel Connector

The connector contains:

- 4x GPIO from DSP - input selection, mute, general control
- 4x ADC from DSP - volume control, balance etc.
- both GPIO and ADC inputs are ESD protected, pcb footprint is extended so you can connect potentiometer directly into 3pin header. Push buttons can be connected directly aswell - you just need to enable pull-ups. With exception of MP0 - there is a pulldown for selfboot and pushbutton is connected 3.3V

1x On/Off pushbutton - connected to power management
 1x GPIO from RPi - for IR control
 1x I2C from RPi - front panel LCD/control of RPi

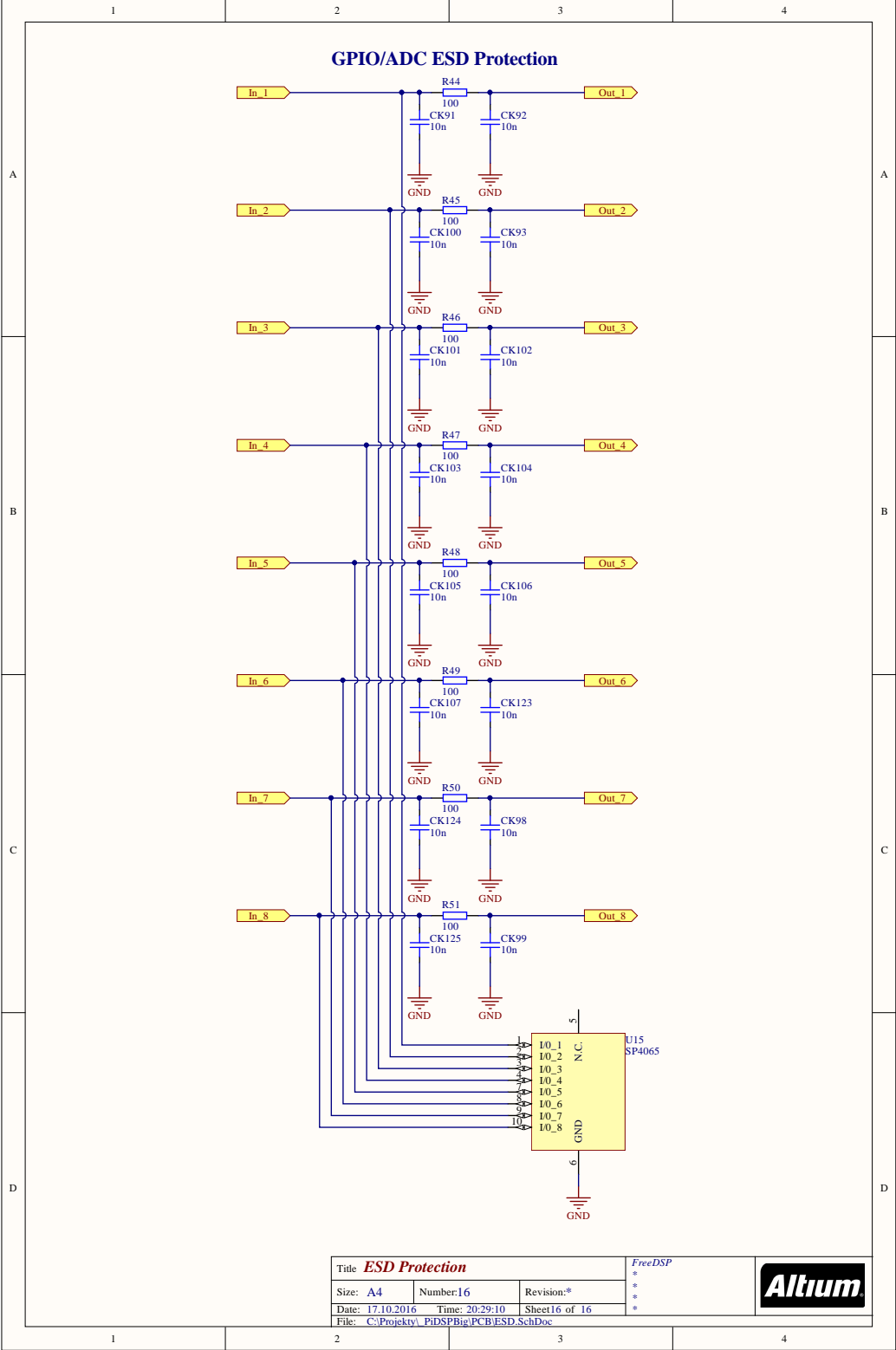


Title Titl		
Size: A4	Number: 15	Revision: *
Date: 17.10.2016	Time: 20:29:10	Sheet 15 of 16
File: C:\Projekty\ PiDSPBig\PCB\FrontPanelConnector.SchDoc		

FreeDSP

*
*
*

Altium



Title **ESD Protection**

Size: A4

Number:16

Revision:*

Date: 17.10.2016 Time: 20:29:10 Sheet16 of 16

File: C:\Projekty\PIDSP\Big\PCB\ESD.SchDoc

FreeDSP

*

*

*

Altium