

# POWERPOD 740 DELUXE

Integrated Mobile Sound System

## SERVICE MANUAL

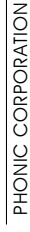


# POWERPOD 740 DELUXE SERVICE MANUAL

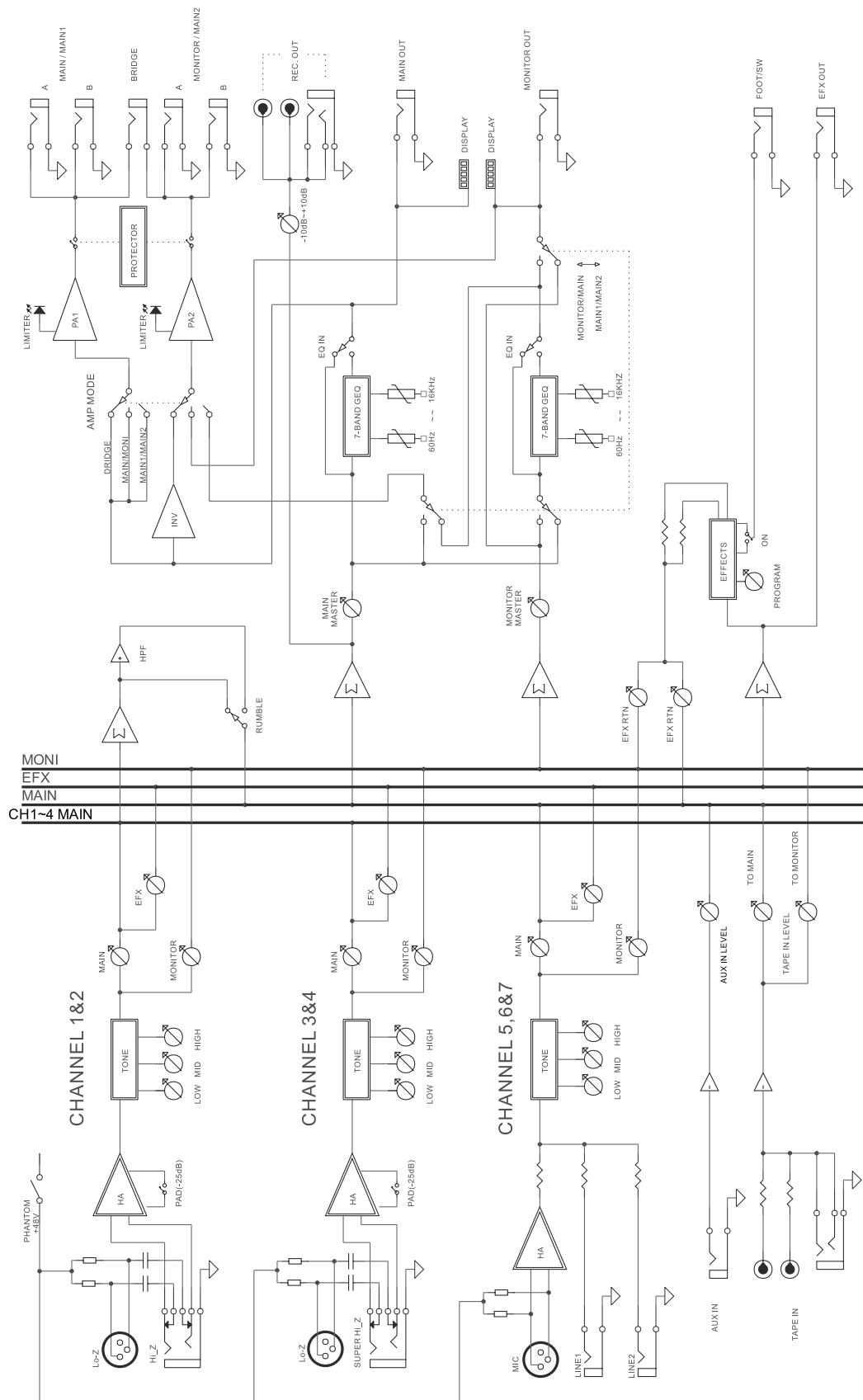
## CONTENTS

### PAGE

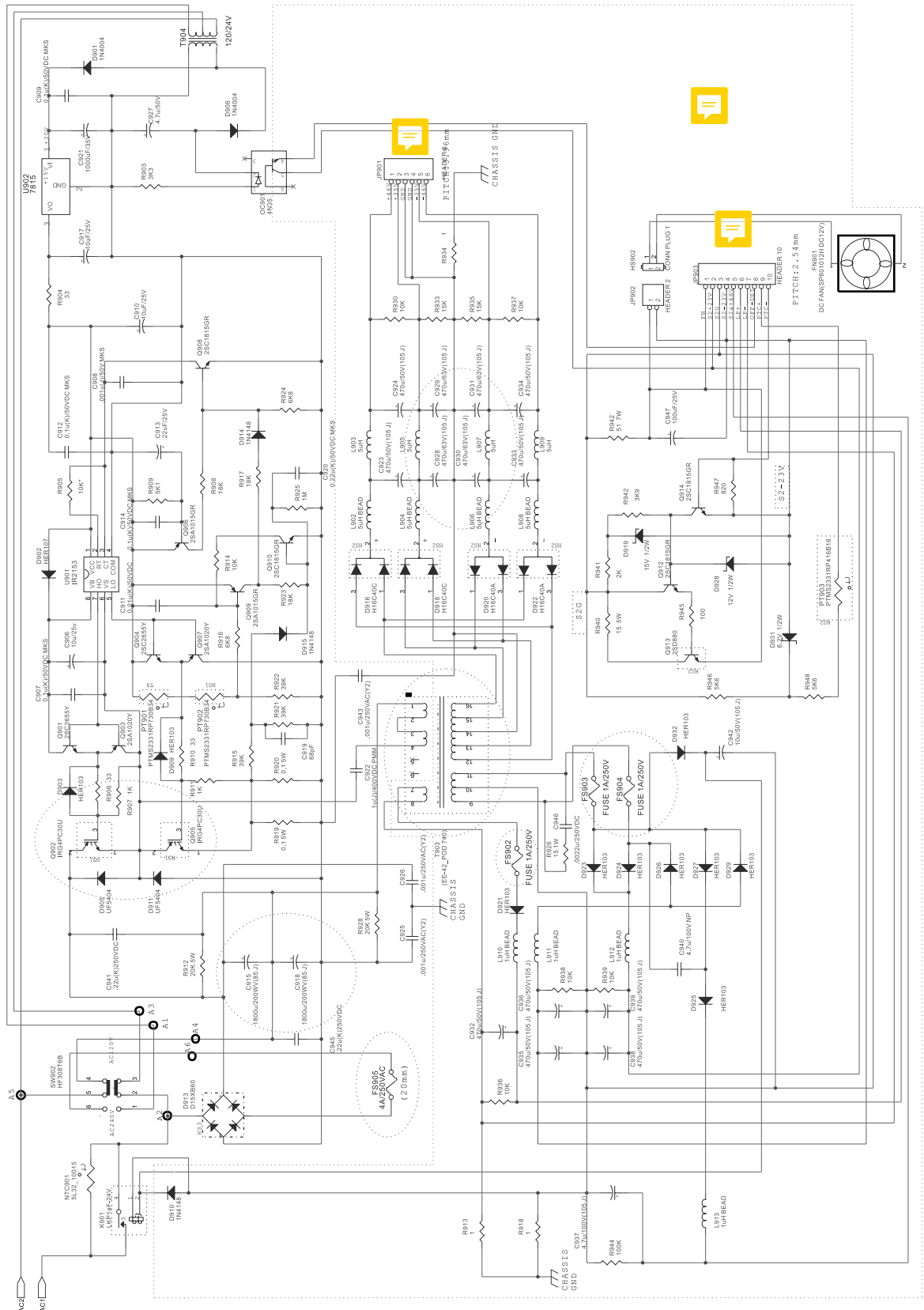
<b>PANEL LAYOUT .....</b>	<b>3</b>
<b>BLOCK.....</b>	<b>4</b>
<b>SW POWER .....</b>	<b>5</b>
<b>POWER.....</b>	<b>6</b>
<b>MONITOR.....</b>	<b>7</b>
<b>MAIN .....</b>	<b>8</b>
<b>EFFECT.....</b>	<b>9</b>
<b>DSP .....</b>	<b>11</b>
<b>AUX TAP .....</b>	<b>12</b>
<b>AMP R.....</b>	<b>13</b>
<b>AMP L .....</b>	<b>14</b>
<b>AC .....</b>	<b>15</b>
<b>CH 1 .....</b>	<b>16</b>
<b>CH 2 .....</b>	<b>17</b>
<b>CH 3 .....</b>	<b>18</b>
<b>CH 4 .....</b>	<b>19</b>
<b>CH 5 .....</b>	<b>20</b>
<b>CH 6 .....</b>	<b>21</b>
<b>CH 7 .....</b>	<b>22</b>
 <b>BOM</b>	
<b>DSP PCB-PART LIST .....</b>	<b>23</b>
<b>MISCELLANEOUS ITEMS .....</b>	<b>24</b>
<b>MASTER AND INPUT PCB-PART LIST .....</b>	<b>26</b>
<b>POWER REQUIREMENT CLASSIFICATION .....</b>	<b>29</b>
<b>AMP PCB-PART LIST .....</b>	<b>32</b>
<b>POWER REQUIREMENT CLASSIFICATION .....</b>	<b>35</b>
<b>AMP PCB-PART LIST .....</b>	<b>36</b>
<b>POWER PCB-PART LIST .....</b>	<b>37</b>



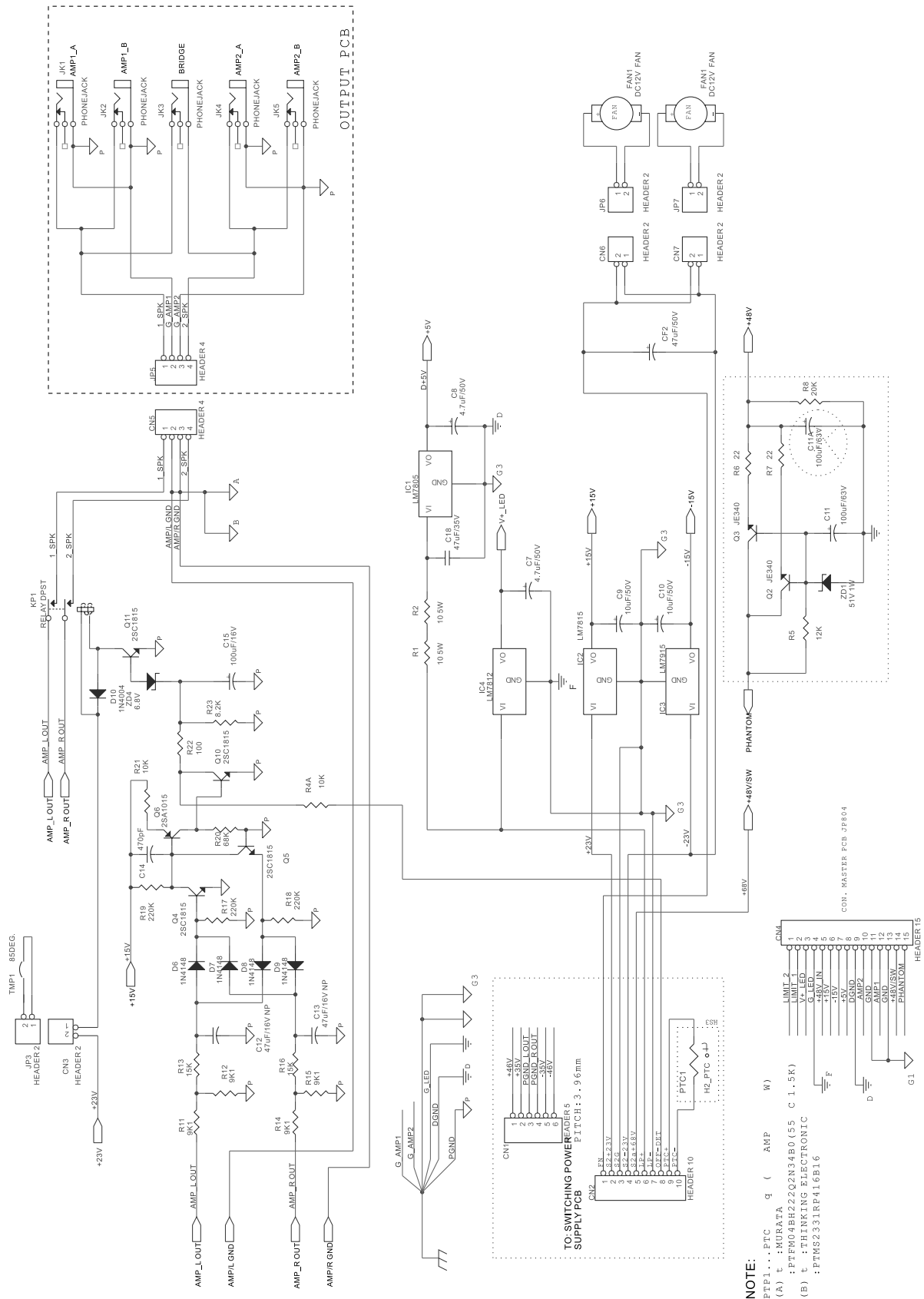
## BLOCK



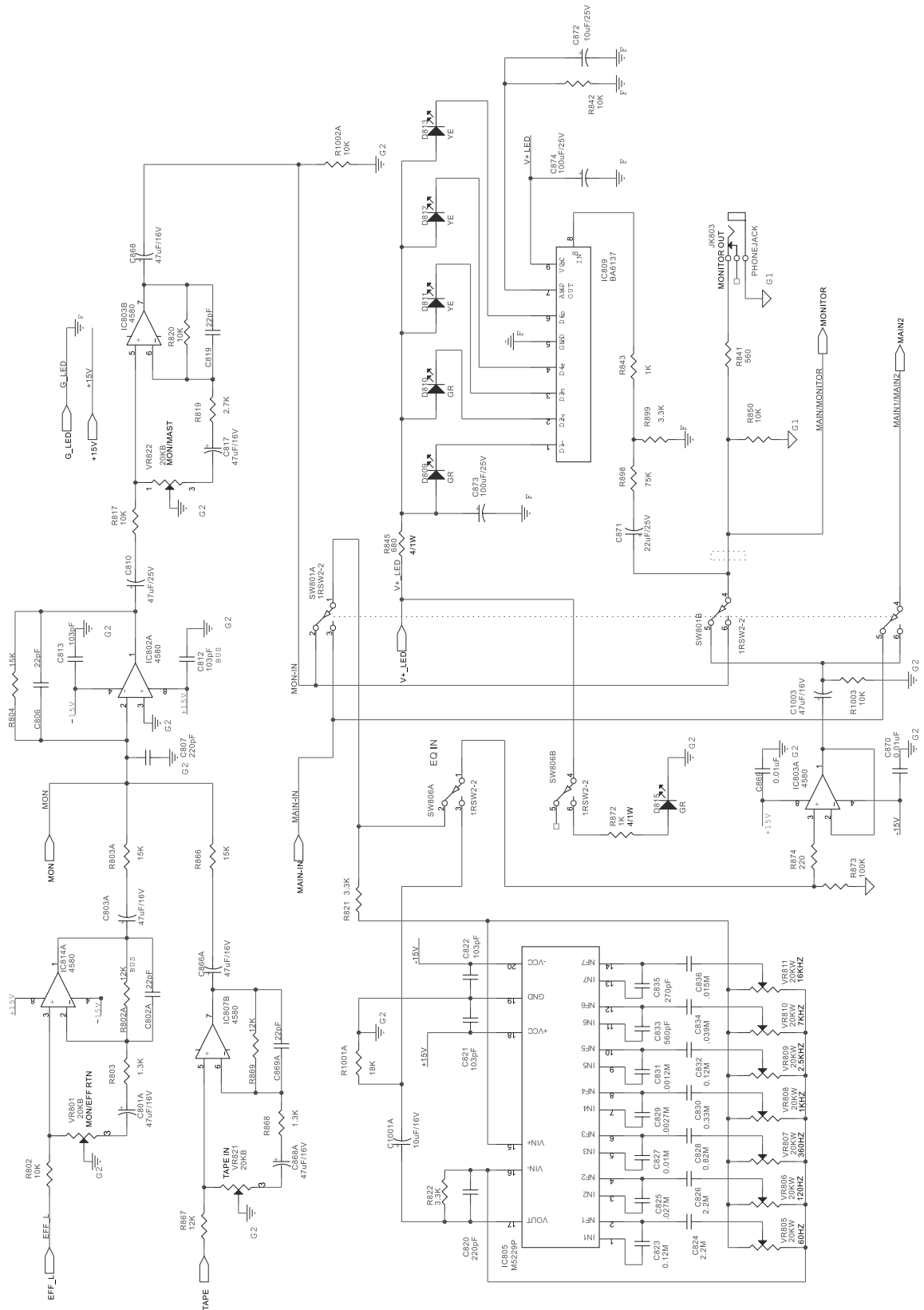
# SW POWER



# POWER



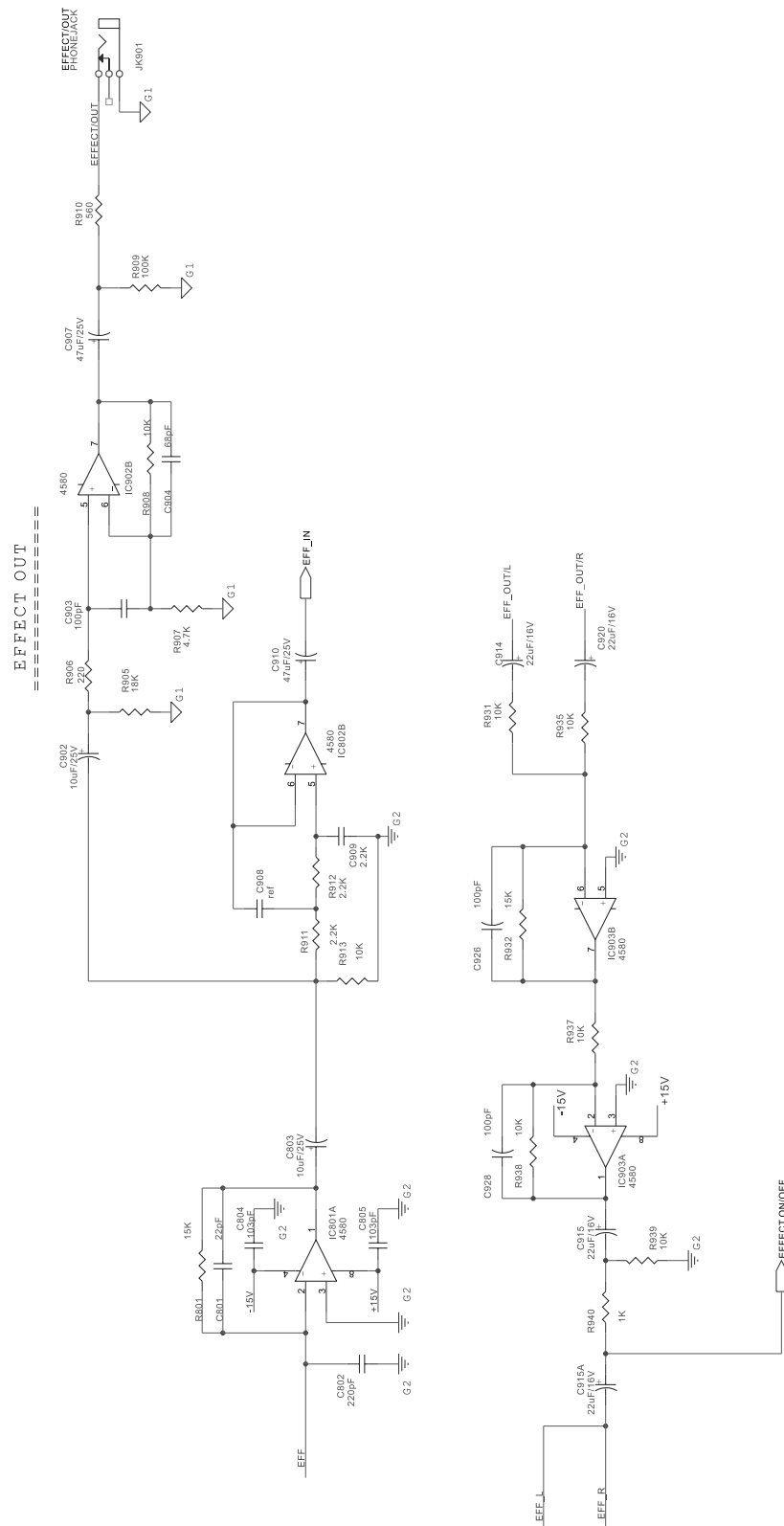
# MONITOR

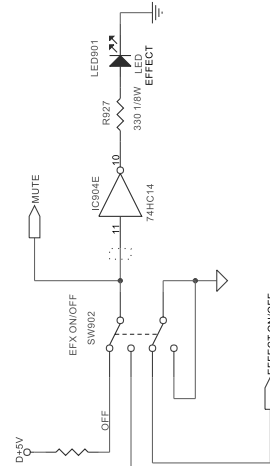


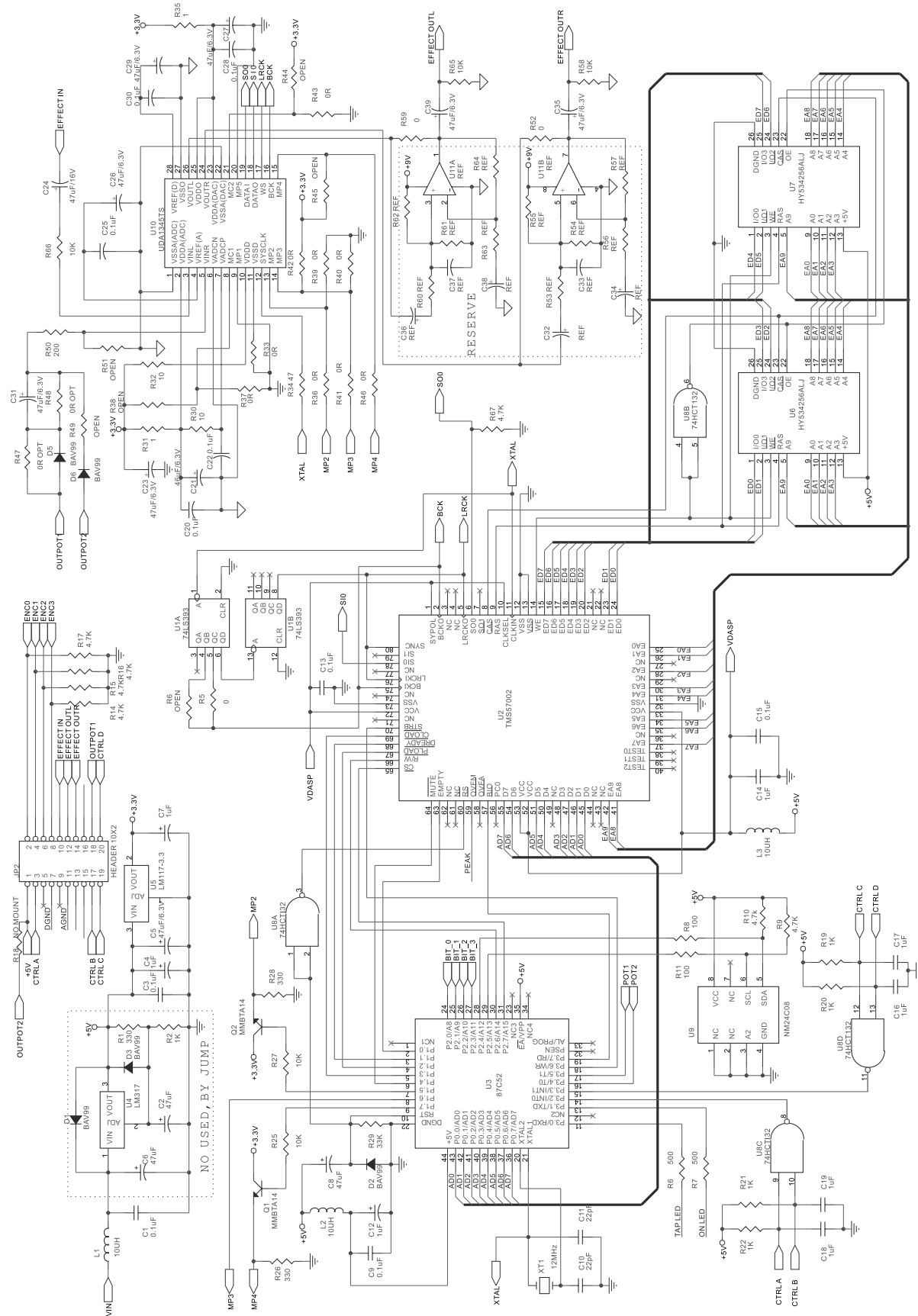




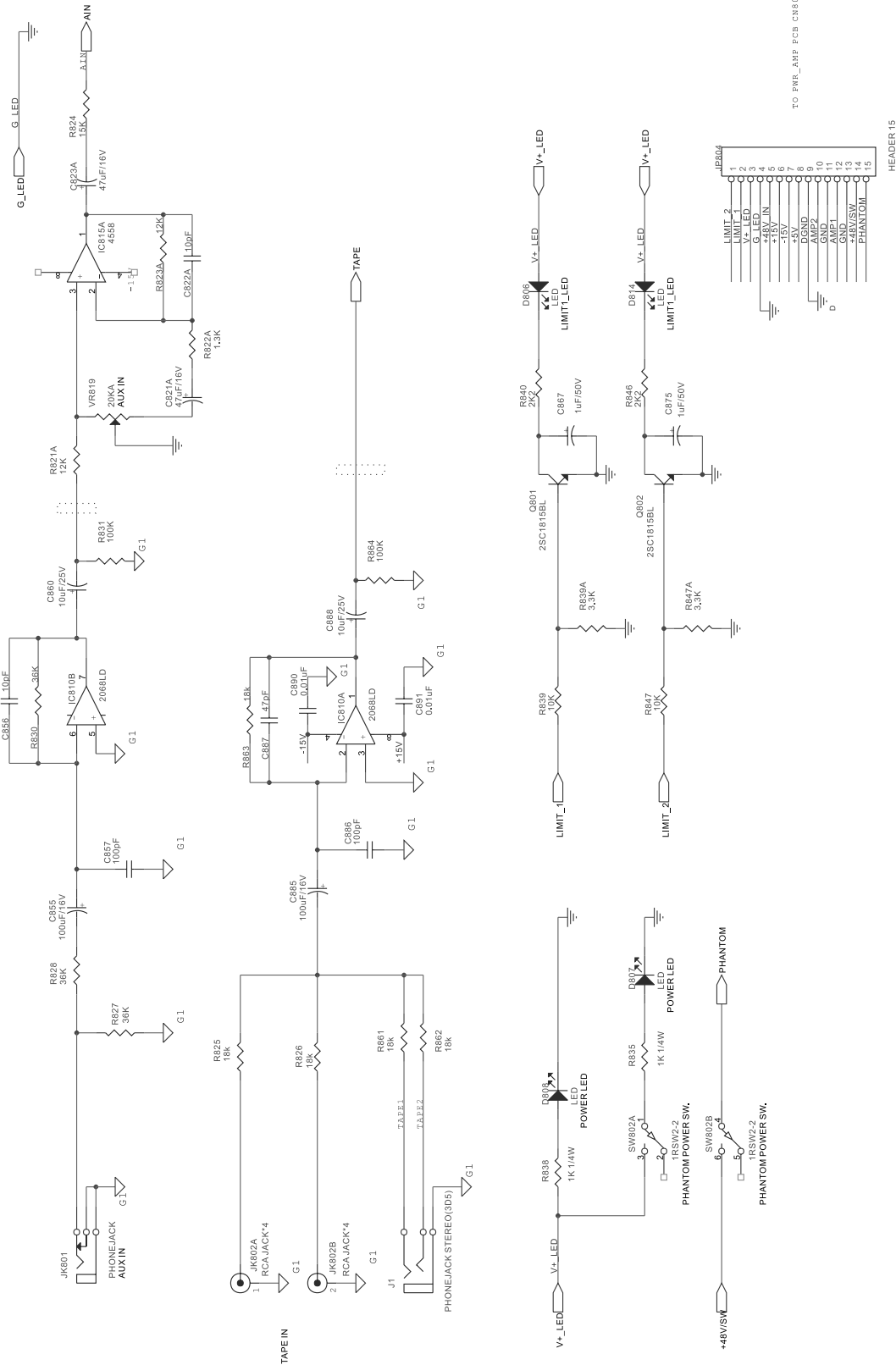
# EFFECT





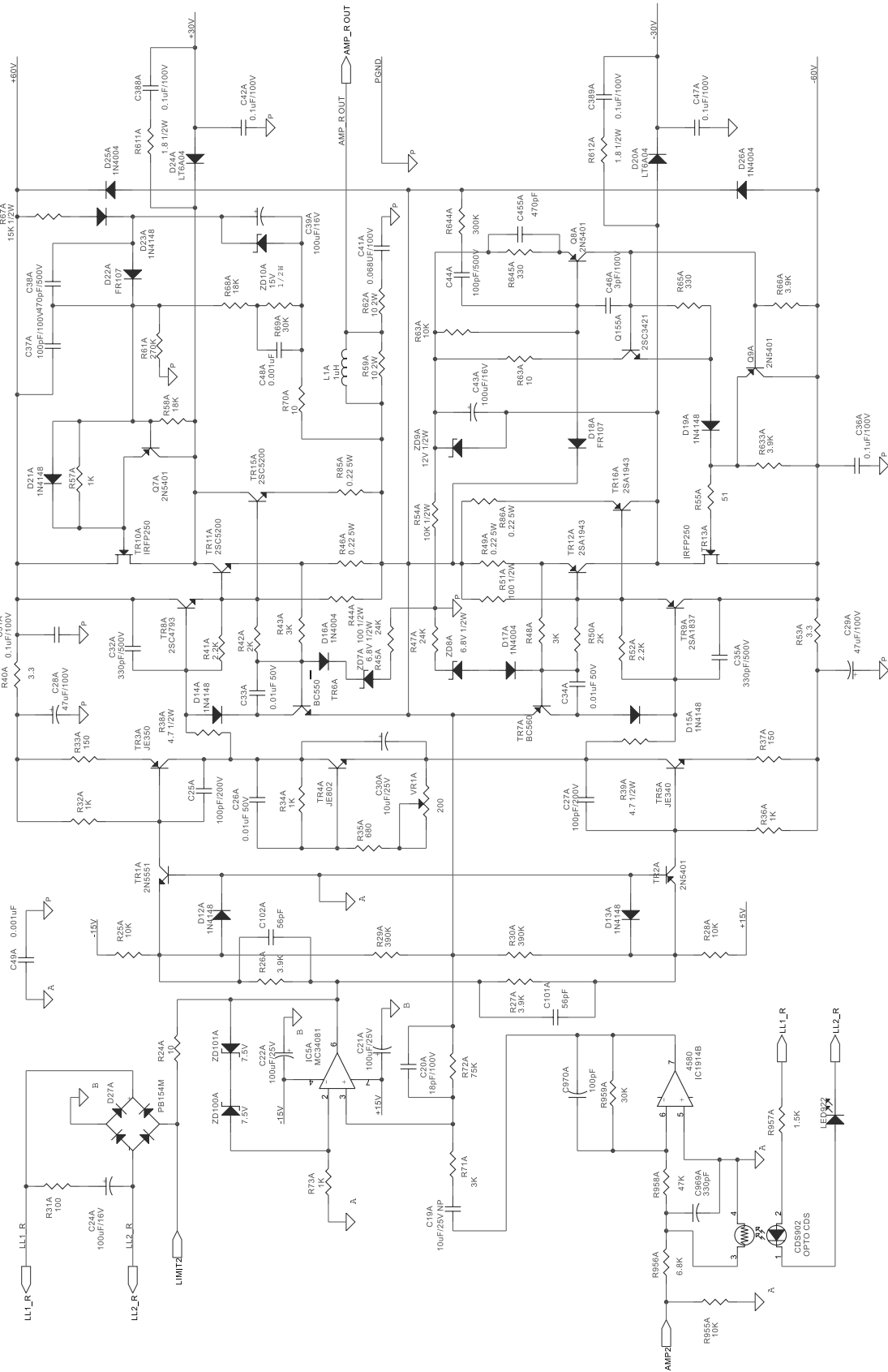


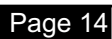
# AUX TAP



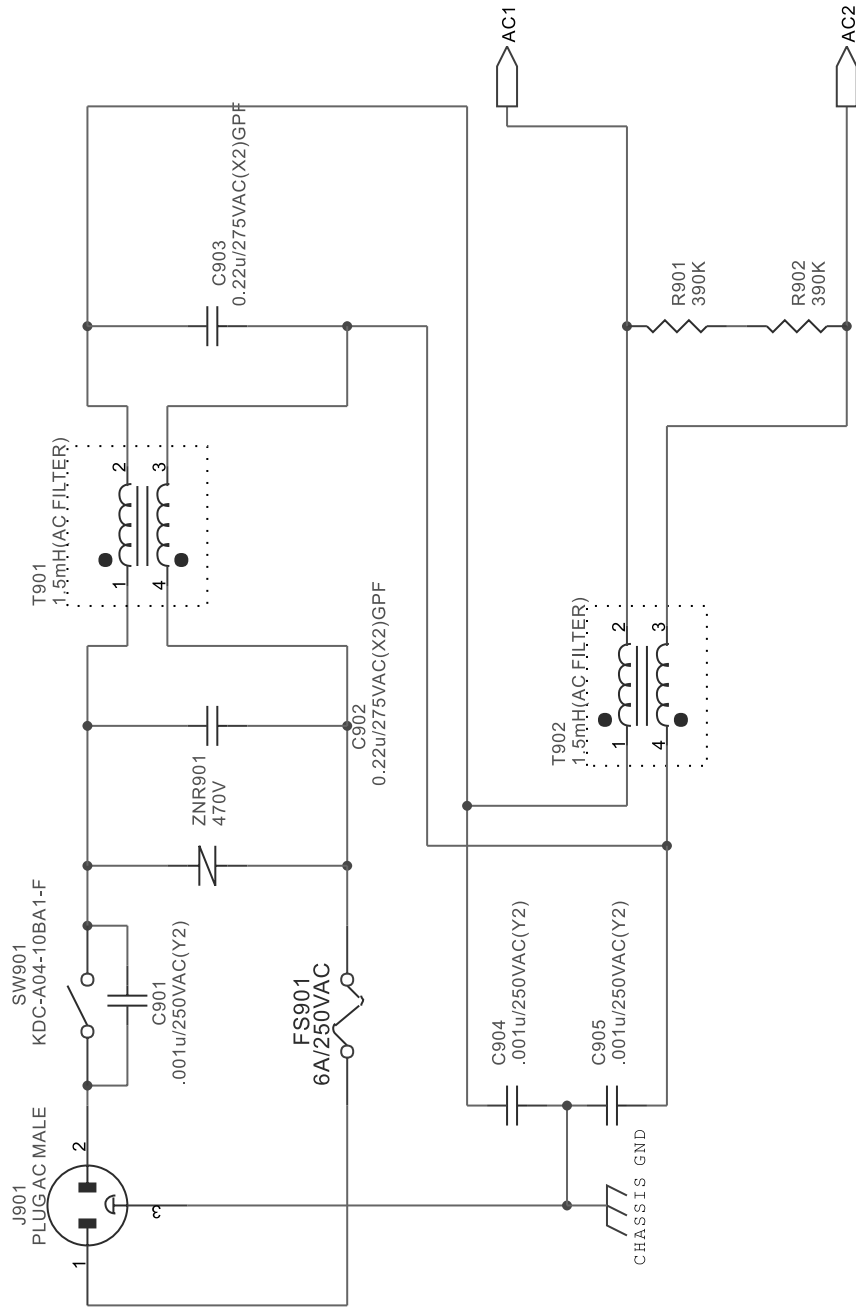
TO PMR\_AMP PCB CN804

# AMP R

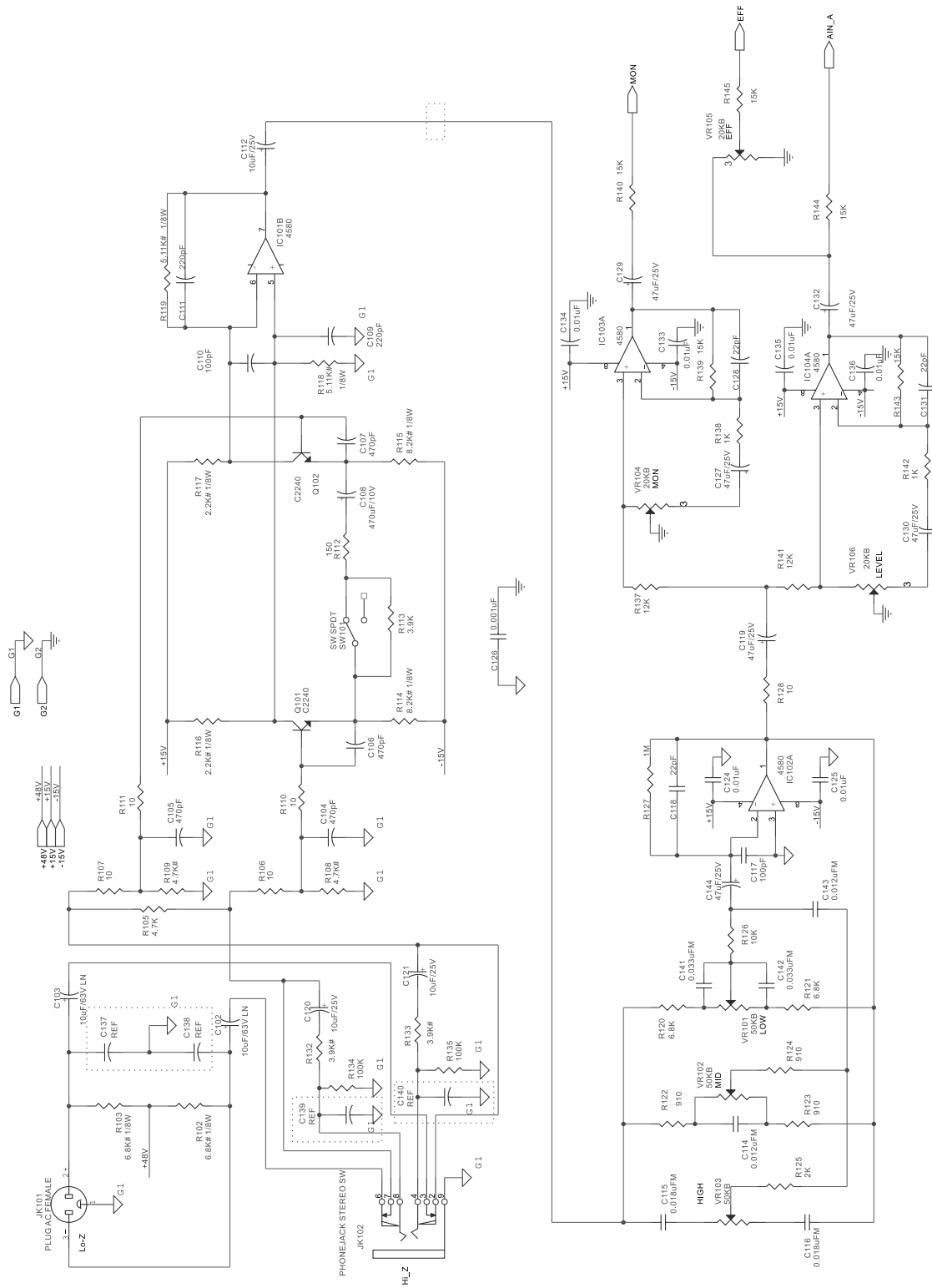




# AC

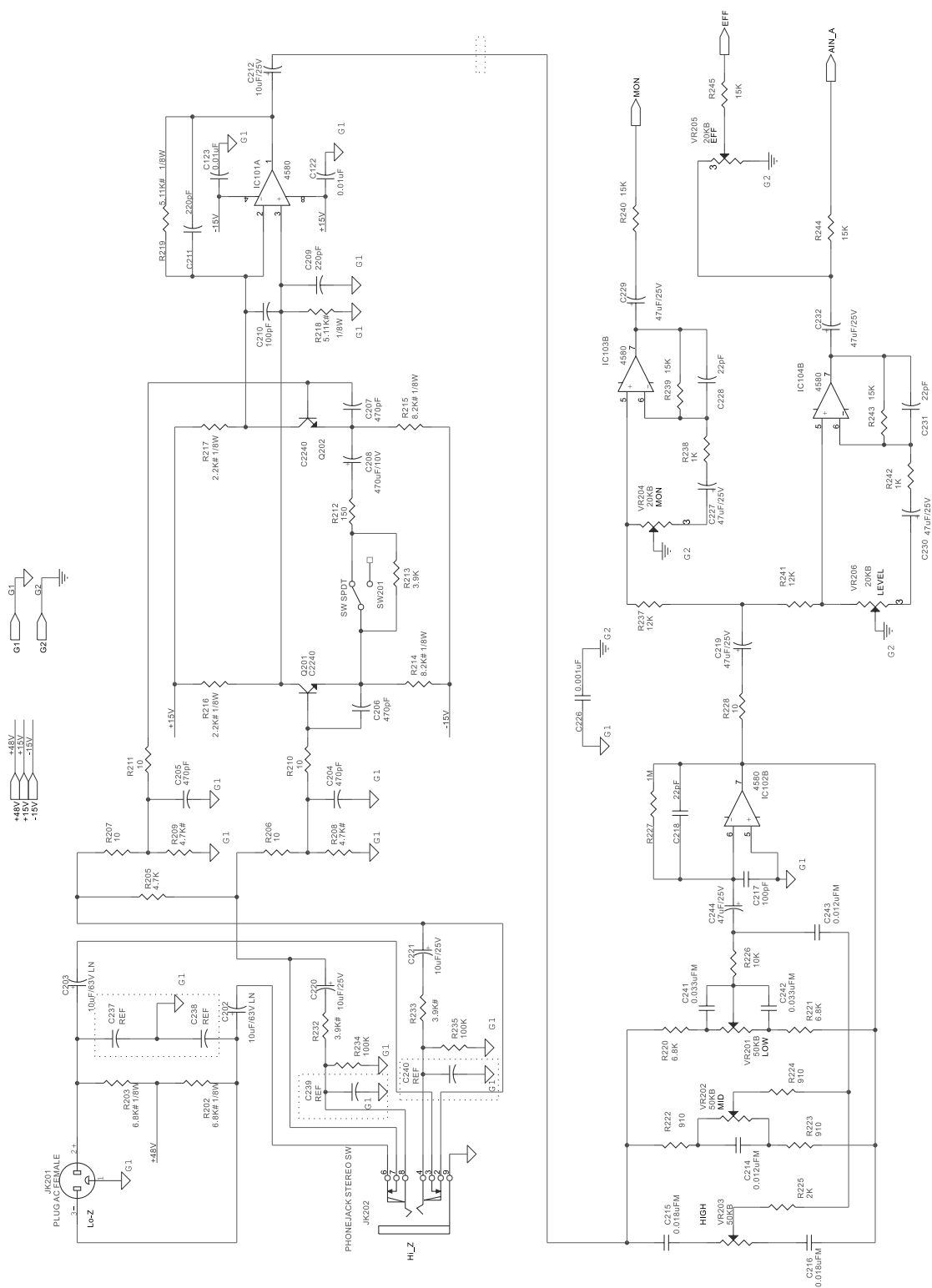


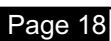
CH 1



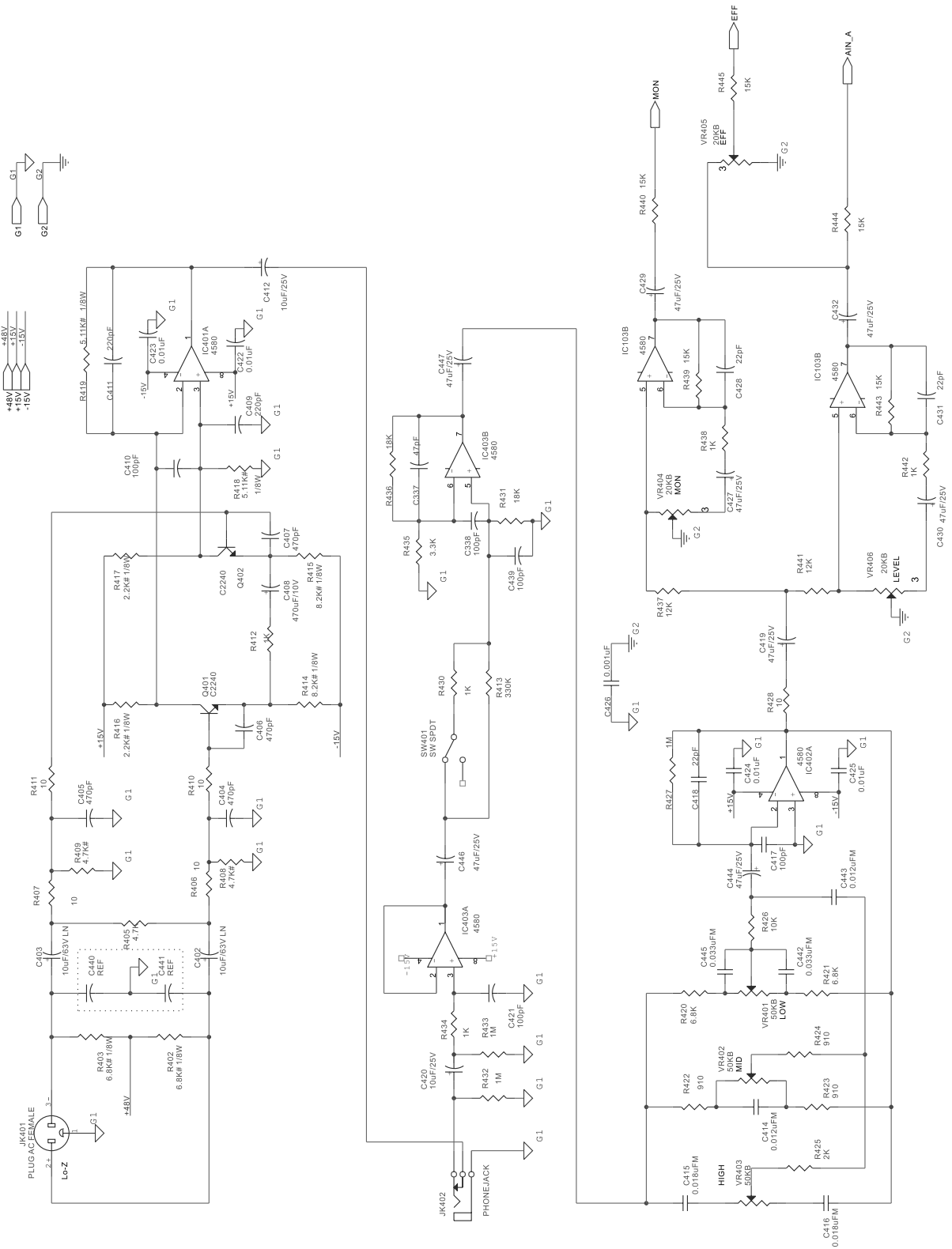


## CH 2





# CH 4

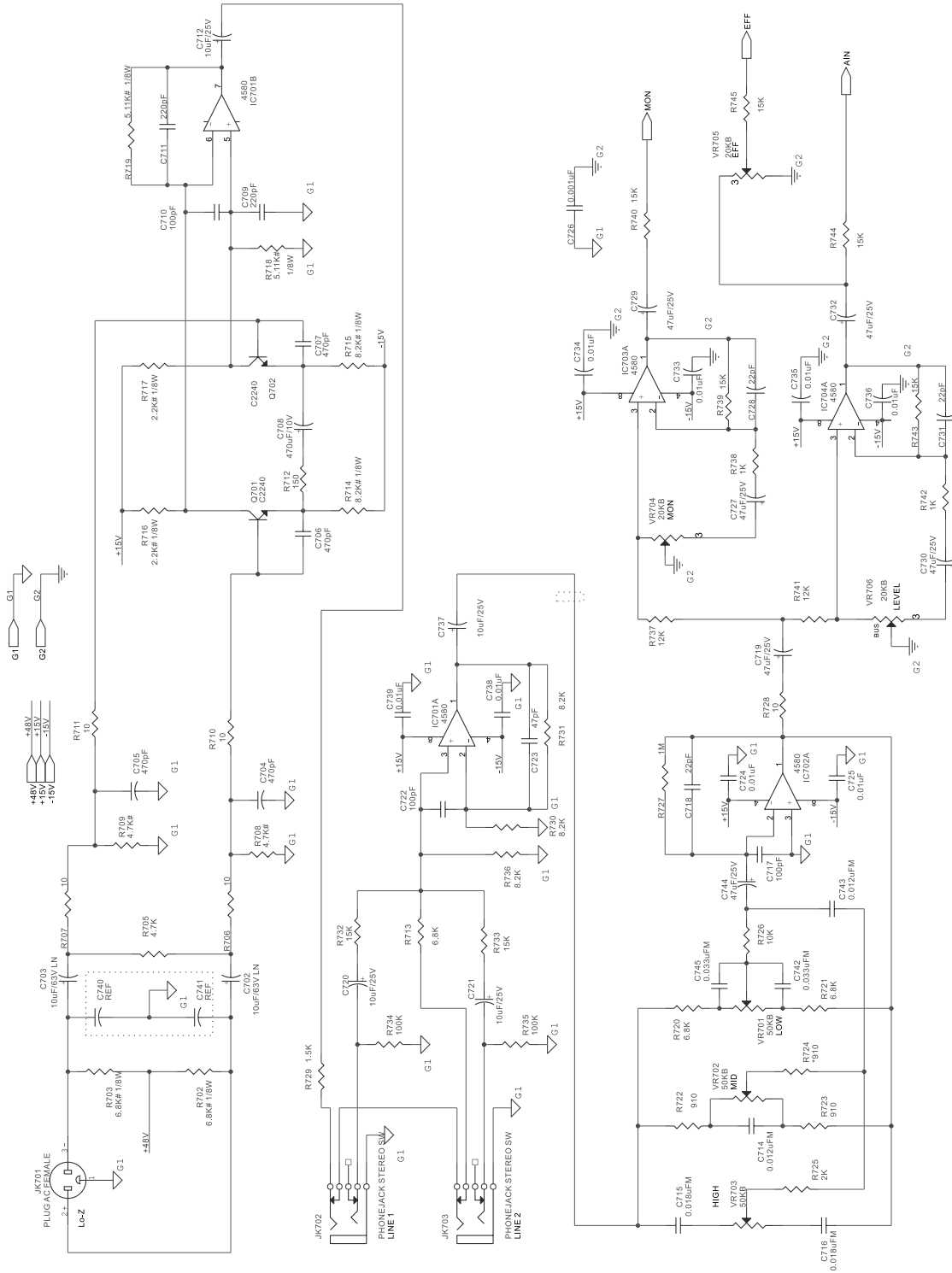






# CH 7

-15V



## DSP PCB-PART LIST

Ref.	Phonic Part No.	Specifications
R5.33.36.37.41.43.46-48.52.59.J3	008-00002-600-0	CHIP RES. 0 J 0603
R30.32	008-01002-600-0	CHIP RES. 10J SMT 0603 PKG
R8.11	008-01012-600-0	CHIP RES. 100 J 0603
R19-22	008-01022-600-0	CHIP RES. 1K J 0603
R25.27.58.65.66	008-01032-600-0	CHIP RES. 10K J 0603
R31.35	008-01072-600-0	CHIP RES. 1 J 0603
R50	008-02012-600-0	CHIP RES. 200 J 0603
R51	008-03012-600-0	CHIP RES. 300 J 0603
E26.28	008-03312-600-0	CHIP RES. 330 J 0603
R29	008-03332-600-0	CHIP RES. 33K J 0603
R34	008-04702-600-0	CHIP RES. 47 J 0603
R9.10.14.15.16.17.67	008-04722-600-0	CHIP RES. 4.7K J 0603
R121.13	008-51002-400-0	CHIP RES. 510 F 0603
C3.9.13.15.20.22.25.28.30	039-10426-230-0	CHIP C/C 0.1MF M 50V 0603
C7.12.14.16-19	039-10526-900-0	CHIP E/C 1MF M 50V 4*5.4
C35.39	039-10606-900-0	CHIP E/C 10MF M 16V 4*5.4
C10.11	039-22024-200-0	CHIP C/C 22PF J 50V 0603
C8.21.23.24.26.27.29.31	039-47646-900-0	CHIP E/C 47MF M 6.3V 4*5.4
D2	090-00039-000-0	DIODE BAV99 SMD
Q1.2	120-00011-100-0	TRAN. MMBTA14 SOT-23 SMD
U5	160-00027-200-0	IC LD1117S33TR SOT-223-M REEL (ST/NS)
U10	160-00028-800-0	CODEC IC UDA1345TS SSOP28 SMD PHIL-IPS
U1	170-00007-000-0	TTL 74HC393 reel-M (PH) SMD
U8	171-00004-800-0	MOS 74HCT132 SO14-D reel-M (PH) SMD
U2	177-00003-900-0	DSP TMS57002 QFP-M TI SMD
U3	177-01005-200-0	CPU TSB87C54X2 PLCC-M V.B(PH/SST)SMD
U6	177-01302-100-0	DRAM IC MIIB416256A 35T TSOP ESMT
	290-01660-401-0	K12 DSP REV-B
XT1	300-12004-010-0	CRYSTAL 12.000MHz SMD

**MISCELLANEOUS ITEMS**

Ref.	Phonic Part No.	Specifications
JP901 FOR GND	211-12300-040-0	AC/S 0717-1-PS
	315-00000-000-0	LUG D4
	321-00000-020-0	CABLE TIE 140MM
	347-00000-240-0	FAN SP601012M
	379-02101-101-0	M.WIRE UL1007 #24 100MM BLK
	379-05800-1B1-6	M/WIRE UL1007#18 80MM YLW/GRN
	379-10191-121-0	M.WIRE UL1617 #18 190MM RED
	379-11601-103-6	M.WIRE UL1015 AWG 16# BLK
	379-12156-106-0	WIRE 120MM UL1617#16 BLK
	379-29101-121-0	M.WIRE UL1617#18 100MM RED
	510-61380-100-0	PANEL SECC1.2 SILVER+GREY(432C) POD740
	511-60590-200-0	BACK PANEL SECC1.2 SILVER+GREY(432C)
	518-60240-001-0	MU2442X
	540-20460-120-0	R/KNOB D12.25*18mm GREY BODY+RED CAP
	540-20460-220-0	R/KNOB 12 12.25*18 GREY BODY
	540-20460-320-0	R/KNOB D12.25*18mm GREY BODY+WHT CAP
	540-60300-220-0	R/KNOB GREY BODY+BLUE CAP
	540-60300-320-0	R/KNOB GREY BODY+WHT CAP
	540-60300-520-0	R/KNOB GREY BODY+BLK CAP
	542-60090-222-0	P/KNOB WHT BODY+COOL GREY 11C
	542-60280-020-0	P/KNOB BLK BODY+WHT TEXT
POWER SW	543-60080-020-0	P/KNOB PUSH BLK
	551-60057-000-0	LF BRKT
	551-60093-000-0	POWER SW BRKT SECC1.0 POD740/1062
	561-60390-000-0	G/B SIZE: POD740 DELUXE
	562-24190-000-0	PULP PANEL 1032*581MM
	566-10001-010-0	SPONGE 25*10*2MM
	568-00003-000-0	#10 240*340*0.05
	568-30011-000-0	PE BAG 300*110*0.05
	572-00000-050-0	DRYER 5g
	573-60162-000-0	FAN BLACK LABEL,D=22MM
	573-60240-000-0	BAR CODE LABEL PHONIC
	574-01710-110-0	OWN. MANU. POD740/1062 DELUXE
	590-03008-100-0	M/E FLT SCR. M3.0*8 NI
	590-03008-200-0	M/E FLT SCR. M3.0*8 BLK D=6
	590-03022-100-0	M/E FLT SCR M3*22 NI
	590-14032-200-7	M/E OVL SCR. M4*32 BLK



Ref.	Phonic Part No.	Specifications
	590-43006-100-0	M/E PAN SCR. M3.0*6 NI
	590-43008-100-0	M/E PAN SCR. M3.0*8 NI
	590-53008-100-0	M/E SET SCR. M3.0*8 NI
	590-54010-100-0	M/E SET SCR. M4*10 NI
	590-54018-200-0	M/E SET SCR. M4.0*18 BLK
	591-03008-100-0	T/P FLT SCR. D3.0*8 NI
	591-43008-100-0	T/P PAN SCR. M3*8 NI
	592-23012-200-0	W/O BID SCR. M3.0*12 BLK
	600-00302-010-0	HEX. NUT M3.0*2.0 NI
	610-00300-501-0	PLA. WAS. D3.0*D7.0*0.5 NI
	610-00300-518-0	FIBER WAS. D3*D7*0.5 RED
	610-20901-001-0	TOOTH WAS D9*12*1 NI
	610-30300-501-0	TOOTH WAS. D3.0*D6.5*0.5 NI
	610-60401-001-0	PAN SPR. WAS. D4*7.6*1.0 NI
	610-80602-005-0	WAS D6*16*2

**MASTER AND INPUT PCB-PART LIST**

Ref.	Phonic Part No.	Specifications
R116.117.216.217.316.31 7.416.417.516.517.616.6 17.716.717	006-22012-440-0	MF RES 2K2 F 0.25W T
VR104-106.204-206.304- 306.404-406.504- 506.604-606.704- 706.801-804.819-821	022-20350-010-0	S.ROT/VR 20KB 30MM P
VR101-103.201-203.301- 303.401-403.501- 506.604-606.704- 706.801-804.819-821	022-50350-050-0	S.ROT/VR 50KB(C.C) 30MM P
VR822	023-50340-050-0	D.ROT/VR 50KB*2 (C.C) 25MM P
VR805-818	027-20372-010-0	D.SLD/VR 20KW*2 20MM P
C108.208.308.408.508.6 08.708	030-10818-000-0	E/C 1000MF Z 10V D8*14 P
C102.202	033-10664-0A0-0	LN E/C 10MF J 63V T 6*11
C848.831	040-12225-150-0	ML/C 0.0012UF K 50V AL T
C824.826.841.843	040-22528-160-0	ML/C 2.2MF Z 50V 5 T
C846.829	040-27225-150-6	ML/C 0.0027UF K 50V CC5MM T AL
D806.807.814	100-00010-030-0	LED BL-B5141 RED
LD917.803.804.805.811. 812.813	100-00040-000-0	LED BL-B3141 YLW
D801.802.809.810.815.81 6.LD901-916	100-00050-000-0	LED BL-B2141 GRN
D808	100-00070-030-0	LED 204UBD D3 BLUE
IC805.806	160-00002-300-0	IC M5229P MITSUBISHI
IC804.809	160-00004-000-0	IC AN6884 DIP (MA)
IC905	171-00000-310-0	MOS HD74HC74P DIP (TI/HI/PH)
IC904	171-00003-500-0	MOS 74HC14 DIP (HT/TI/PH)
IC901	177-02000-301-0	GAL IC 16V8D-15 LP LATTICE
SW802	210-01202-360-6	SLD/SW SS-22F20G8
SW1	210-01203-110-0	SLD/SW SSK-23E03-G10-NS
SW801	210-01402-020-0	SLD/SW 4P2T H=19MM
SW804.805.806.902	210-02201-440-0	PSH/SW 2P2T SFPC12MC03-PF
SW101.201.301.401	210-02202-070-0	PUSH/SW SPEC12HC11-JP
SW901	210-16000-000-0	ENCODER SDB161PVB20F-1-4-16PC
JK802	211-00040-020-0	4P RCA/J RL-1414 4DB
JK1.2	211-01302-100-0	3D5/J EJ 3536B
JK302.402.801	211-01601-240-0	6D3/J JY-6351-02-130 SCJ-0658
JK102.202	211-01602-220-0	6D3/J APJ-06-2
JK502.503.602.603.702. 703.902	211-01602-380-0	6D3/J (SCJ-0658-Y)
JK803.804.901	211-01602-390-0	6D3/J JY-6351-02-030 SCJ-0658

Ref.	Phonic Part No.	Specifications
JK101.201.301.401.501. 601.701	211-03300-160-0	XLR/J SKCA229-1K3F2
R128.228.328.428.528.6 28.728.106.107.110.111. 206.207.210.211.306.30 7.310.311.406.R407.410 .411.506.507.510.511.60 6.607.610.611.706.707.7 10.711	008-01002-600-0	CHIP RES. 10J SMT 0603 PKG
R138.142.238.242.338.3 42.438.442.538.542.638. 642.738.742.834.843.915 .926.R312.334.434.412.3 30.430	008-01022-600-0	CHIP RES. 1K J 0603
R126.226.326.426.526.62 6.726.811.820.833.839.8 42.847.882.886.808.817. 908.R1002.1002A.1003.8 34.938.890.892.895.913. 921.937.802.802B.836.85 0-852.931.935	008-01032-600-0	CHIP RES. 10K J 0603
R134.135.234.235.534.53 5.634.635.734.735.831.8 64.870.873.909	008-01042-600-0	CHIP RES. 100K J 0603
R127.227.327.427.527.62 7.727.332.333.432.433	008-01052-600-0	CHIP RES. 1M J 0603
R813-816	008-01222-600-0	CHIP RES. 1.2K J 0603
R137.141.237.241.337.3 41.437.441.537.541.637. 641.737.741.802A.805B. R821A.821B.823A.823B. 867.869	008-01232-600-0	CHIP RES. 12K J 0603
	008-01322-600-0	CHIP RES. 1.3K J 0603
R885	008-01332-600-0	CHIP RES. 13K J 0603
R112.212.512.612.712	008-01512-600-0	CHIP RES. 150 J 0603
R529.629.729	008-01522-600-0	CHIP RES. 1.5K J 0603
R139.140.143-145.239 .240.243.244.339.340. 343-345.439.440.443- 445.539.540.543-545.R6 39.640.643.644.645.739 .740.743.744.745.881.88 7.888.245.803A.804.806. 807.801.R824.865.866.8 89.532.533.632.633.732. 733.932	008-01532-600-0	CHIP RES. 15K J 0603
R331.431.336.436.825.8 26.861.862.863.905.1001 .1001A	008-01832-600-0	CHIP RES. 18K J 0603

Ref.	Phonic Part No.	Specifications
R125.225.325.425.525.6 25.725	008-02022-600-0	CHIP RES. 2K J 0603
R871.874.906	008-02212-600-0	CHIP RES. 220 J 0603
R911.912	008-02222-600-0	CHIP RES. 2.2K J 0603
C909	008-02232-600-0	CHIP RES. 22K J 0603
R884.924.925	008-02442-600-0	CHIP RES. 240K J 0603
R810.819	008-02722-600-0	CHIP RES. 2.7K J 0603
R812.821.822.823.839A. 847A.897.899.923	008-03322-600-0	CHIP RES. 3.3K J 0603
R848.849	008-03332-600-0	CHIP RES. 33K J 0603
R313.413	008-03342-600-0	CHIP RES. 330K J 0603
R335.435.893.894	008-03622-600-0	CHIP RES. 3.6K J 0603
R827.828.830.883	008-03632-600-0	CHIP RES. 36K J 0603
R891	008-03922-600-0	CHIP RES. 3.9K J 0603
R922	008-04732-600-0	CHIP RES. 47K J 0603
R837.841.910	008-05612-600-0	CHIP RES. 560 J 0603
R120.121.220.221.320.32 1.420.421.520.521.620.6 21.720.721.513.613.713	008-06822-600-0	CHIP RES. 6K8 J 0603
R896.898	008-07532-600-0	CHIP RES. 75K J 0603
R530.531.536.630.631.63 6.736.730.731	008-08222-600-0	CHIP RES. 8.2K J 0603
R122.123.222.223.322.32 3.422.423.522.523.622.6 23.722.723.124.224.324. 424.524.624.R724	008-09112-600-0	CHIP RES. 910 J 0603
	008-39012-400-0	CHIP RES. 3.9K F 0603
R108.109.208.209.308.30 9.408.409.508.509.608.6 09.708.709.105.205.305. 405.505.605R705.907	008-47012-400-0	CHIP RES. 4.7K F 0603
C856	039-10024-220-0	CHIP C/C 10PF J 50V 0603
C109.111.209.211.309.31 1.409.411.509.511.609.61 1.709.711	039-10124-000-0	CHIP C/C 100PF J 50V 0805
C117.217.317.417.517 .617.717.903.926.928 .110.210.310.321.338 .339.410.421.438.439 .C510.522.610.622.71 0.722.857.878.886.923	039-10124-220-0	CHIP C/C 100PF J 50V 0603
C126.226.326.426.526.6 26.726	039-10224-220-0	HIP C/C 0.001MF J 50V 0603

**POWER REQUIREMENT CLASSIFICATION**

Ref.	Phonic Part No.	Specifications
C124.125.324.325.524.5 25.724.725.869.870.916 .917.133.333.533.733.73 4.334.534.134.C135.335 .535.735.804.805.812.8 13.821.822.838.839.858 .859.136.336.536.736.C 122.123.322.323.538.53 9.638.639.738.739.876.8 77.890.891.905.906.CL1- 16	039-10324-220-0	CHIP C/C 0.01MF J 50V 0603
C901.921.922	039-10424-220-0	CHIP C/C 0.1MF J 50V 0603
C128.131.228.231.328.3 31.428.431.528.531.628. 631.728.731.801.802A.8 02B.806.809.C816.819.8 22A.822B.869A.882.899. 892.118.218.318.418.518 .618.718	039-22024-220-0	CHIP C/C 22PF J 50V 0603
C104-107.204-207.304- 307.404-407.504- 507.604-607.704-707	039-47124-220-0	CHIP C/C 470PF J 50V 0603
	039-22124-220-0	CHIP C/C 220PF J 50V 0603
	039-47024-220-0	CHIP C/C 47PF J 50V 0603
C884.895.896	039-47324-220-0	CHIP C/C 0.047MF J 50V 0603
C904	039-68024-220-0	CHIP C/C 68PF J 50V 0603
IC102-104.302-304.502- 504.702-704.801-803.807 .811.812.814.815.903.IC1 01.301.401.403.501.601. 701.810.813.902	160-00024-100-0	IC NJM4580M DMP (JRC) 2K SMD
R901-904	000-10106-400-0	CF RES. 100 J 1/8W T
R835.838.872.875	000-10226-400-0	CF RES. 1K J 0.25W T
R840.846	000-22226-400-0	CF RES. 2K2 J 0.25W T
R927	000-33126-400-0	CF RES. 330 J 0.25W T
R832.845	000-68126-400-0	CF RES. 680 J 0.25W T
R102.103.202.203.303 .402.403.502.503.602 .603.702.703	000-68206-400-0	CF RES. 6K8 J 1/8W T
R118.119.218.219.318.31 9.418.419.518.519.618.6 19.718.719	006-51110-440-0	MF RES 5.11K F 1/8W T
R114.115.214.215.314.31 5.414.415.514.515.614.6 15.714.715	006-82010-440-0	MF RES 8K2 F 1/8W T
C867.875	030-10555-000-0	E/C 1MF K 50V 5*11 P

Ref.	Phonic Part No.	Specifications
C803.864.872.898.112 .120.121.212.220.221 .312.412.512.520.521.53 7.612.620.C637.712.720. 721.737.860.888.902.621 .320.420	030-10636-0A0-0	E/C 10MF M 25V 5*11 T
	030-10736-0A0-0	E/C 100MF M 25V 8*11 T
C854.871.880.914.915. 920.	030-22636-0A0-0	E/C 22MF 25V Z 5*11 T
C119.127.129.130.132.2 19.227.229.230.232.319. 327.329.144.244.344.444 .544.644.744.C330.332.4 19.427.429.430.432.519. 527.529.530.532.619.627 .629.630.632.719.727.72 9.C730.732.810.811.883. 910.861.862.866.893 .89 4.907.346.347.446.447.8 97.C801A.801B.803A.80 3B.817.821A.821B.823A.	030-47626-0A0-0	E/C 47MF M 16V 5*11 T
C103.203.302.303.402. 403.502.503.602.603.70 2.703	033-10664-0A0-0	LN E/C 10MF J 63V T 6*11
C915A	035-22626-0A0-0	MINI E/C 22MF M 16V T
C844A.827	040-10325-160-6	ML/C 0.01UF 50V P5 T
C823.832.840.849	040-12425-160-6	ML/C 0.12MF K 50V 5 T
C836.853	040-15325-100-0	ML/C 0.015MF K 50V P 5 T
C825.842	040-27325-160-0	ML/C 0.027MF K 50V 5 T
C830.847	040-33426-100-0	ML/C 0.33MF M 50V P 5 T
C834.851	040-39325-160-0	ML/C 0.039UF K 50V 5 T
C833.850	040-56134-100-6	ML/C 560PF 100V J P 5T
C828.845	040-82426-140-0	ML/C 0.82MF M 50V 5 T
C835.852	042-27125-050-0	C/C2 270PF K 50V 5 T
C114.214.314.414.514 .614.714.143.243.343 .443.543.643.743	046-12304-060-0	M/C 0.012MF J 50V 5 T
C115.215.315.415.515.61 5.715.116.216.316.416.5 16.616.716	046-18304-060-0	M/C 0.018MF J 50V T
C141.142.241.242.345.34 2.445.442.545.542.645.6 42.742.745	046-33304-060-0	M/C 0.033MF J 50V 5 T
Q801.802	120-00000-800-0	TRN 2SC1815 GR TO-92-D REEL(TO)

Ref.	Phonic Part No.	Specifications
Q101.102.201.202.301.3 02.401.402.501.502.601. 602.701.702	120-00001-010-0	TRN 2SC2240 TO-92-D REEL(TO)
C800.818.879.881.900.10 01.1001A	382-10005-010-0	TINNER WIRE 5MM D0.6
	290-60740-601-0	POD740 DELUXE MASTER+INPUT+JK PCB

**AMP PCB-PART LIST**

Ref.	Phonic Part No.	Specifications
R54.54A.67.67A	000-15336-400-0	CF RES. 15K J 0.5W T
R611.612.611A.612A	000-18736-400-0	CF RES. 1.8 J 0.5W T
R1.2.62.62A	003-10073-600-0	CEMENT RES. 10 J 5W
R46.46A.49.49A.85.85A.8 6.86A	003-22093-601-0	CEMENT RES. 0.22 J 5W AL
FUSE RES. 100 J 0.5W P	004-10136-800-0	FUSE RES. 100 J 0.5W P
FUSE RES. 4.7 0.5W	004-47736-800-0	FUSE RES. 4.7 0.5W
CDS901.902	010-00007-000-0	CDS 32SR2S SILONEX
PTC1	011-22010-000-0	PTC PTMS2331RP416B16
VR1.1A	020-47138-000-6	T/VR 470J T-085C-B470 0.5W
C18	030-10736-0A0-0	E/C 100MF M 25V 8*11 T
C11.11A	030-10768-0A0-0	E/C 100MF Z 63V 10*17 T
C28.28A.29.29A	030-47686-0A0-0	E/C 47MF M 100V 10*17 T
C455.455A	042-47164-050-0	C/C2 470PF J 350V 5 T
L1.1A	075-10082-100-0	INDUCTANCE 1UH K M
KP1	076-02422-010-0	RELAY OSA-SH-224DM3M
D3.10.16.16A.17.17A.25.2 5A.26.26A.3A	090-00007-020-0	DIODE 1N4004 SILTEK T
D20.20A.24.24A	090-00017-000-0	DIODE LT6A04
ZD9.9A	090-01123-000-0	ZEN/DIODE 12V J 0.5W UNIZON POD/XP/ MAX
ZD1(□□)	090-01243-100-0	ZENER DIODE 24V J 1W
D18.18A.22.22A	090-02004-000-0	DIODE 1N4935 T
D27.27A	090-10000-000-0	B/DIODE PB154
LED901.922	100-00010-030-0	LED BL-B5141 RED
Q2.3.TR5.5A	120-00005-000-0	TRN MJE340 SOT32-DIP(ON/MO)
TR11.11A.15.15A	120-00008-600-0	TRN 2SC5200-O DIP(TO) 100
TR4.4A	120-00008-800-0	TRN MJE802 SOT-32-D(MO) 500 DIP
TR8.8A	120-00009-500-0	TRN 2SC4793-M DIP(TO) 500
TR12.12A.16.16A	121-00006-000-0	TRP 2SA1943-O DIP(TO) 100
TR3.3A	121-00006-100-0	TRP MJE350 SOT-93-D (ON)
TR9.9A	121-00007-200-0	TRP 2SA1837-M DIP(TO)
TR10.10A.13.13A	122-00002-500-0	TRF IRFP250N TO-247-D REEL (IR)
IC4	160-00001-219-0	IC 7812 DIP (ST) 400
IC3	160-00002-909-0	IC ST7915 TO-220-D(ST)
IC1	160-00004-114-0	IC 7805 DIP(ST) 400
IC2	160-00005-909-0	IC ST7815 TO-220-D(ST) DIP
IC914	160-00017-500-0	IC NJM4580D DIP(JRC)
IC5.6	160-00021-900-0	IC NJM5534D DIP8-D(JRC)
TAMP1	210-10090-001-0	TMP/SW US-602SXRFCQ
R24.24A.64.64A.70.70A	000-10026-400-0	CF RES. 10 J 0.25W T



Ref.	Phonic Part No.	Specifications
R22	000-10126-400-0	CF RES. 100 J 0.25W T
R32.32A.36.36A.57.57A.7 3.73A.34.34A	000-10226-400-0	CF RES. 1K J 0.25W T
R4( R1.2□ )25.25A.28.28A.63. 63A.955.955A.	000-10326-400-0	CF RES. 10K J 0.25W T
R33.33A.37.37A	000-15126-400-0	CF RES. 150 J 0.25W T
R957.957A	000-15226-400-0	CF RES. 1K5 J 0.25W T
R58.58A.68.68A	000-18326-400-0	CF RES. 18K J 0.25W T
R42.42A.50.50A	000-20226-400-0	CF RES. 2K J 0.25W T
R8	000-20326-400-0	CF RES. 20K J 0.25W T
R6.7	000-22026-400-0	CF RES. 22 J 0.25W T
R21.41.41A.52.52A	000-22226-400-0	CF RES. 2K2 J 0.25W T
R17.18.19	000-22426-400-0	CF RES. 220K J 0.25W T
R45.45A.47.47A	000-24326-400-0	CF RES. 24K J 0.25W T
R61.61A	000-27426-400-0	CF RES. 270K J 0.25W T
R43.43A.48.48A	000-30226-400-0	CF RES. 3K J 0.25W T
R69.69A.959.959A	000-30326-400-0	CF RES. 30K J 0.25W T
R644.644A	000-30426-400-0	CF RES. 300K J 0.25W T
R65.65A.645.645A	000-33126-400-0	CF RES. 330 J 0.25W T
R31.31A	000-39026-400-0	CF RES. 39 J 0.25W T
R11.12.14.15.26.26A.27.2 7A.66.66A.633.633A	000-39226-400-0	CF RES. 3K9 J 0.25W T
R29.29A.30.30A	000-39426-400-0	CF RES. 390K J 0.25W T
R958.958A	000-47326-400-0	CF RES. 47K J 0.25W T
R55.55A	000-51026-400-0	CF RES. 51 J 0.25W T
R5	000-51226-400-0	CF RES. 5K1 J 0.25W T
R35.35A	000-68126-400-0	CF RES. 680 J 0.25W T
R13.16.23.956.956A	000-68226-400-0	CF RES. 6K8 J 0.25W T
R20	000-68326-400-0	CF RES. 68K J 0.25W T
R71.71A	006-30012-440-0	MF RES. 3K F 0.25W T
R40.40A.53.53A	006-33082-440-0	MF RES. 3.3 F 0.25W T
R72.72A	006-75022-420-0	MF RES. 75K F 0.25W T
C7-10.30.30A.1003.1004	030-10636-0A0-0	E/C 10MF M 25V 5*11 T
C12.13.39.39A.43.43A	030-10728-0A0-0	E/C 100MF Z 16V 6*11 T
C21.21A.22.22A	030-10736-0A0-0	E/C 100MF M 25V 8*11 T
C15.24.24A	030-22728-0A0-0	E/C 220MF Z 16V 8*11 T
CF2	030-47656-0A0-0	E/C 47MF M 50V 8*11 T
C19.19A	032-10636-0A0-0	NP E/C 10MF M 25V 6.3*11 T
C46.46A	042-03020-000-0	C/C2 3PF C 50V 5

Ref.	Phonic Part No.	Specifications
C970.970A	042-101A6-050-0	C/C2 100PF J 50V T
C25.27.25A.27A.37.37A.4 4.44A	042-101A6-050-0	C/C2 100PF M 250V 5 T
C49.49A.1005.1006	042-10425-050-0	C/C2 0.1MF K 50V 5 T
C20.20A	042-18044-050-0	C/C2 18PF J 100V 5 T
C48.48A	042-201A5-050-0	C/C2 200PF K 250V
C969.969A	042-33124-050-0	C/C2 330PF J 50V T
C32.32A.35.35A	042-33185-000-0	C/C2 330PF K 500V P
C14	042-47124-050-0	C/C2 470PF J 50V 5 T
C38.38A	042-47164-050-0	C/C2 470PF J 350V 5 T
C101A.102A.1001.1002	042-56024-050-0	C/C2 56PF J 50V 5 T
C26.26A.33.33A.34.34A.9 71.972	046-10304-060-0	M/C 0.01MF J 50V 5 T
C36.36A.42.42A.47.47A.3 1.31A.388.388A.389.389A	046-10414-060-0	M/C 0.1MF J 100V 5 T
C41.41A	046-68314-060-0	M/C 0.068MF J 100V T
ZD10.10A	090-01153-010-0	Z/DIODE 15V K 0.5W UNIZON
ZD7.7A.8.8A.4	090-01682-000-0	ZEN/DIODE 6.8V J0.5W UNIZO
ZD100.101.100A.101A	090-01752-010-0	ZEN/DIODE 7V5 K 0.5W FAIRCH
D21.21A.23.23A.14.14A.1 2.12A.13.13A.15.15A.19.1 9A.6-9	090-02000-020-0	DIODE 1N4148 T26MM MINI
Q4.5.10.11	120-00000-800-0	TRN 2SC1815 GR TO-92-D REEL(TO)
TR6.6A	120-00001-010-0	TRN 2SC2240 TO-92-D REEL(TO)
TR1.1A.Q155.155A	120-00001-400-0	TRN 2N5551 TO-92-D (TO/FA/ON)
Q6	121-00000-200-0	TRP 2SA1015GR TO-92-D REEL(TO)
TR2.2A.Q7.8.9.7A.8A.9A	121-00000-300-0	TRP 2N5401 TO-92-D REEL(ON/FA)
TR7.7A	121-00000-500-0	TRP 2SA970-BL TO-92-D REEL (TO)
	290-60740-701-0	POD740 PWR-AMP PCB

## POWER REQUIREMENT CLASSIFICATION

Ref.	Phonic Part No.	Specifications
<b>IEC</b>		
FS902.903.904	280-2026B-000-0	FUSE 2A 250V UL/CSA/JIS S
FS905	280-3E216-001-0	FUSE 3.15A/250V S BEL5ST3.15
	280-63267-000-0	FUSE TSD6.3A 250V VDE/UL/CSSES
	370-15010-921-0	P/CORD IEC 10A 6F 3P VDE
<b>UL</b>		
FS902.903.904	280-2026B-000-0	FUSE 2A 250V UL/CSA/JIS S
FS905	280-3E216-001-0	FUSE 3.15A/250V S BEL5ST3.15
	280-63267-000-0	FUSE TSD6.3A 250V VDE/UL/CSSES
	370-08010-721-0	P/CORD 120V 10A 6F 3PUL/CSA
<b>SA</b>		
FS902.903.904	280-2026B-000-0	FUSE 2A 250V UL/CSA/JIS S
FS905	280-3E216-001-0	FUSE 3.15A/250V S BEL5ST3.15
	280-63267-000-0	FUSE TSD6.3A 250V VDE/UL/CSSES
	370-06010-321-6	P/CORD 10A/250V SA 2.5M 3P
<b>SAA</b>		
FS902.903.904	280-2026B-000-0	FUSE 2A 250V UL/CSA/JIS S
FS905	280-3E216-001-0	FUSE 3.15A/250V S BEL5ST3.15
	280-63267-000-0	FUSE TSD6.3A 250V VDE/UL/CSSES
	370-11010-821-0	P/CORD 240V10A 6F 3P SAA SVT
<b>JIS</b>		
FS902.903.904	280-2026B-000-0	FUSE 2A 250V UL/CSA/JIS S
FS905	280-3E216-001-0	FUSE 3.15A/250V S BEL5ST3.15
	280-63267-000-0	FUSE TSD6.3A 250V VDE/UL/CSSES
	370-16510-629-0	P/CORD 7A 125V 2P 6F JIS
<b>BS</b>		
FS902.903.904	280-2026B-000-0	FUSE 2A 250V UL/CSA/JIS S
FS905	280-3E216-001-0	FUSE 3.15A/250V S BEL5ST3.15
	280-63267-000-0	FUSE TSD6.3A 250V VDE/UL/CSSES
	370-01010-921-0	P/CORD 240V 10A 6F 3P

**AMP PCB-PART LIST**

<b>Ref.</b>	<b>Phonic Part No.</b>	<b>Specifications</b>
JK1-5	211-01601-300-0	6D3/J M203A-2
CN1	212-10041-057-0	4P WAFER/P 300MM UL1015#18 P=3.96mm
	290-60740-800-0	POD740 DELUXE OUTPUT PCB

**POWER PCB-PART LIST**

Ref.	Phonic Part No.	Specifications
R919.920	003-10093-602-0	CEMEN RE. 0.1 J 5W
R940	003-15073-602-0	CEMENT RES. 15 J 5W
R912.928	003-20023-602-0	CEMENT RES. 20K J 5W
R907	006-10012-440-0	MF RES. 1K F 0.25W T
R930.937	006-10023-440-0	MF RES. 10K F 0.5W T
R933.935	006-15023-420-0	MF RES. 15K F 0.5W M
R926	006-15074-440-0	MF RES. 15 F 1W T
R906.910	006-33072-440-0	MF RES. 33 F 0.25W T
PT903	011-22010-000-0	PTC PTMS2331RP416B16
PT901	011-22010-010-0	PTC PTMS2331RP730B34
PT902	011-22010-020-0	PTC PTLS2101RP816B
NTCS1	012-10020-010-0	NTC THER. N20SP010L
C921	030-10846-000-0	E/C 1000MF M 35V 10*21 T
C915.918	030-188C6-000-0	E/C 1800UF 200V P
C923.924.928.929.930-936.938.939	030-47758-001-0	E/C 470MF Z 50V 13*21 P
R921	042-10144-050-0	C/C2 100PF J 100V 5T
C946	042-222A5-050-0	C/C2 0.0022UF 250V K
C909	051-104C5-000-0	MP/C 0.1MF K 63V T(ESK063P10JA)
C922	051-10545-000-0	MP/C 1MF K 400V PMM
C941.945	051-22435-000-0	MP/C 0.22UF K 250V
C901.904.905.925.926	058-10226-000-0	LINE/C 0.001UF M 250V Y2
C902.903	058-22485-000-0	LINE/C 0.22MF K 275V
C943	058-47236-001-0	LINE/C 0.0047MF M 400V
T904	070-2086B-800-0	X'MER 115/230V K-12
T903	070-2087B-800-0	X'MER
T901.902	072-20121-000-0	CHOCK COIL TF5104
L901-913	072-20138-000-0	BEAD COIL 1119
K901	076-02411-020-0	RELAY SDT-S-124DMR OEG
D930	090-00003-000-0	DIODE 1N4007 SILITEK
D902	090-00026-000-0	DIODE HER107 ( 1A/800V)
D901.906	090-00007-020-0	DIODE 1N4004 SILTEK T
D916.918	090-00030-000-0	DIODE H16C40C MOSPEC
D903.909.921.923-927.929.932	090-00031-000-0	DIODE HER103
D920.922	090-00032-000-0	DIODE H16C40A MOSPEC
D905.911	090-00037-000-0	DIODE HER308
D913	090-10017-000-0	B/DIODE KBJ2506
Q901.904	120-00010-600-0	TRAN. 2SC2655Y TOSHIBA
Q913	120-00012-800-0	TRAN. 2SD2012 TOSHIBA

Ref.	Phonic Part No.	Specifications
Q903.907	121-00008-400-0	TRAN. 2SA1020Y TOSHIBA
Q902.905	122-00002-700-0	MOSFET IRG4PC50W IR
U902	160-00005-909-0	IC ST7815 TO-220-D(ST) DIP
OC901	160-00010-501-0	IC 4N35 LI
U901.	160-00026-400-0	IC IR2153D IR
SW902	210-01202-380-0	SLD/SW RF-1002 RONG FENG
SW901	210-02101-030-0	PSH/SW PA-03S-A1
ZNR901	301-47100-000-0	ZNR 470V
R945	006-10002-440-0	MF RES. 100 F 0.25W T
R911	006-10012-440-0	MF RES. 1K F 0.25W T
R944	006-10022-440-0	MF RES. 10K F 0.25W T
R925	006-10042-440-0	MF RES 1M F 0.25W
R913.918.934	006-10082-440-0	MF RES. 1 F 0.25W T
R908.917.623	006-18022-440-0	MF RES. 18K F 0.25W T
R941	006-20012-420-0	MF RES. 2K F 0.25W T
R903	006-33012-440-0	MF RES. 3K3 F 0.25W T
R904	006-33022-440-0	MF RES. 33K F 0.25W T
R942	006-39012-420-0	MF RES. 3K9 F 0.25W M
R922	006-39022-440-0	MF RES. 39K F 0.25W T
R904	006-33072-440-0	MF RES. 33 F 0.25W T
R901.902	006-39032-440-0	MF RES. 390K F 0.25W T
R915	006-47022-440-0	MF RES. 47K F 0.25W T
R909	006-51012-440-0	MF RES 5K1 F 0.25W T
R946.948	006-56012-440-0	MF RES. 5K6 F 0.25W T
R916.924	006-68012-440-0	MF RES. 6K8 F 0.25W T
R947	006-82002-440-0	MF RES. 820 F 0.25W T
C906.910.917	030-10638-0A0-0	E/C 10MF Z 25V 5*11 T
C942	030-10656-2A0-0	E/C 10MF M 50V 5*11T
C947	030-10736-0A0-0	E/C 100MF M 25V 8*11 T
C913	030-22638-0A0-0	E/C 22MF Z 25V 5*11 T
C927	030-47558-0A0-0	E/C 4.7MF Z 50V 5*11 T
C940.937	030-47586-200-0	E/C 4.7MF M 100V 5*11 P
C908	051-102C4-000-0	MP/C 0.001MF J 63V P
C911	051-103C5-000-0	MP/C 0.01MF K 63V T (ESK063S10JA)
C907.912.914.944	051-104C5-000-0	MP/C 0.1MF K 63V T(ESK063P10JA)
C920	051-224C5-000-0	MP/C 0.22MF K 63V T (ESK063P22JA)
D928	090-01123-000-0	ZEN/DIODE 12V J 0.5W UNIZON POD/XP/ MAX
D919	090-01153-010-0	Z/DIODE 15V K 0.5W UNIZON
D931	090-01622-000-0	ZENER DIODE 6.2V J 0.5W T
Q910.914.915	090-02000-020-0	DIODE 1N4148 T26MM MINI

Ref.	Phonic Part No.	Specifications
Q908.910.912.914	120-00000-800-0	TRN 2SC1815 GR TO-92-D REEL(TO)
Q906.909	121-00000-200-0	TRP 2SA1015GR TO-92-D REEL(TO)
	290-01710-101-0	POD740/1062 DELUXE POWER PCB

**PHONIC**  
[WWW.PHONIC.COM](http://WWW.PHONIC.COM)