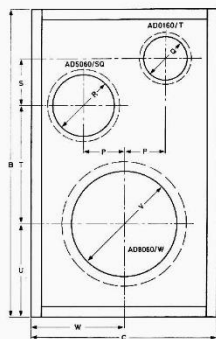


PHILIPS LOUDSPEAKERS

SYSTEM 14

HI-FI

A smoother response to 20 000 Hz and beyond is obtained with this system in which the 5-inch squawker superbly reproduces the mid-range. Using an enclosure of only 25 litres, a resonance frequency of 67 Hz is obtained with this system. For a power handling capacity of 20 W in relatively small listening rooms this enclosure gives very good results. Details for winding the coils of the cross-over filter are given in System 9.



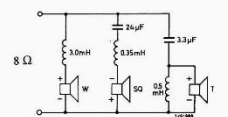
	mm	in
B	530	20 ⁷ / ₁₆
C	320	12 ⁵ / ₁₆
P	70	2 ³ / ₄
Q	74	2 ¹⁵ / ₁₆
R	108	4 ¹ / ₄
S	60	2 ³ / ₁₆
T	205	8 ¹ / ₁₆
U	160	6 ¹ / ₁₆
V	180	7 ¹ / ₁₆
W	160	6 ³ / ₁₆

Depth of enclosure = 150 mm (5¹⁵/₁₆ in)

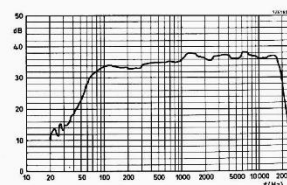
8" HI-QUALITY WOOFER + 5" SQUAWKER + 1" TWEETER

Woofers - AD 8060/W8
Squawker - AD 5060/Sq8
Tweeter - AD 0160/T8
Filter - ADF 500-4500/8

Power handling capacity = 20 W
Music power = 30 W
Enclosure volume = 25 ltr (0.88 ft³)



Cross-over frequencies = 500 and 4500 Hz

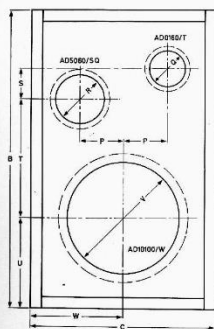


Resonance frequency = 67 Hz

SYSTEM 20

HI-FI

This system is exactly the same as System 18 with one exception; the woofer is the 10-inch hi-fi version, and not the high quality version as before. The difference between the two systems can now be compared. Firstly, the power handling capacity is 33% more at 40 W and, secondly, the resonance frequency of the system has dropped from 65 Hz to 52 Hz. In all other respects the enclosure is identical, and the constructor may interchange loudspeakers and check the differences for himself. As the hi-fi woofer has been used here, the system is naturally more expensive than System 18, but distortion is particularly low despite increased frequency range and power handling capacity.



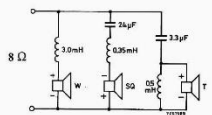
	mm	in
B	630	24 ³ / ₁₆
C	380	15
P	70	2 ³ / ₄
Q	74	2 ¹⁵ / ₁₆
R	108	4 ¹ / ₄
S	60	2 ³ / ₁₆
T	250	9 ⁷ / ₁₆
U	190	7 ¹ / ₂
V	230	9 ¹ / ₁₆
W	190	7 ¹ / ₂

Depth of enclosure = 150 mm (5¹⁵/₁₆ in)

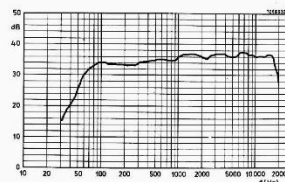
10" HI-FI WOOFER + 5" SQUAWKER + 1" TWEETER

Woofers - AD 10100/W8
Squawker - AD 5060/Sq8
Tweeter - AD 0160/T8
Filter - ADF 500-4500/8

Power handling capacity = 40 W
Music power = 60 W
Enclosure volume = 35 ltr (1.24 ft³)



Cross-over frequencies = 500 and 4500 Hz



Resonance frequency = 52 Hz