

## Dismantling hints CD Short Loader

### Dismantling the tray

- a) Press open/close button to open the tray. If the tray doesn't work, use a small screwdriver as shown in Fig.1 point 1 to move the tray outside. After the first centimetre it is possible to pull the tray out by hand.
- b) Release two snaps and remove tray.

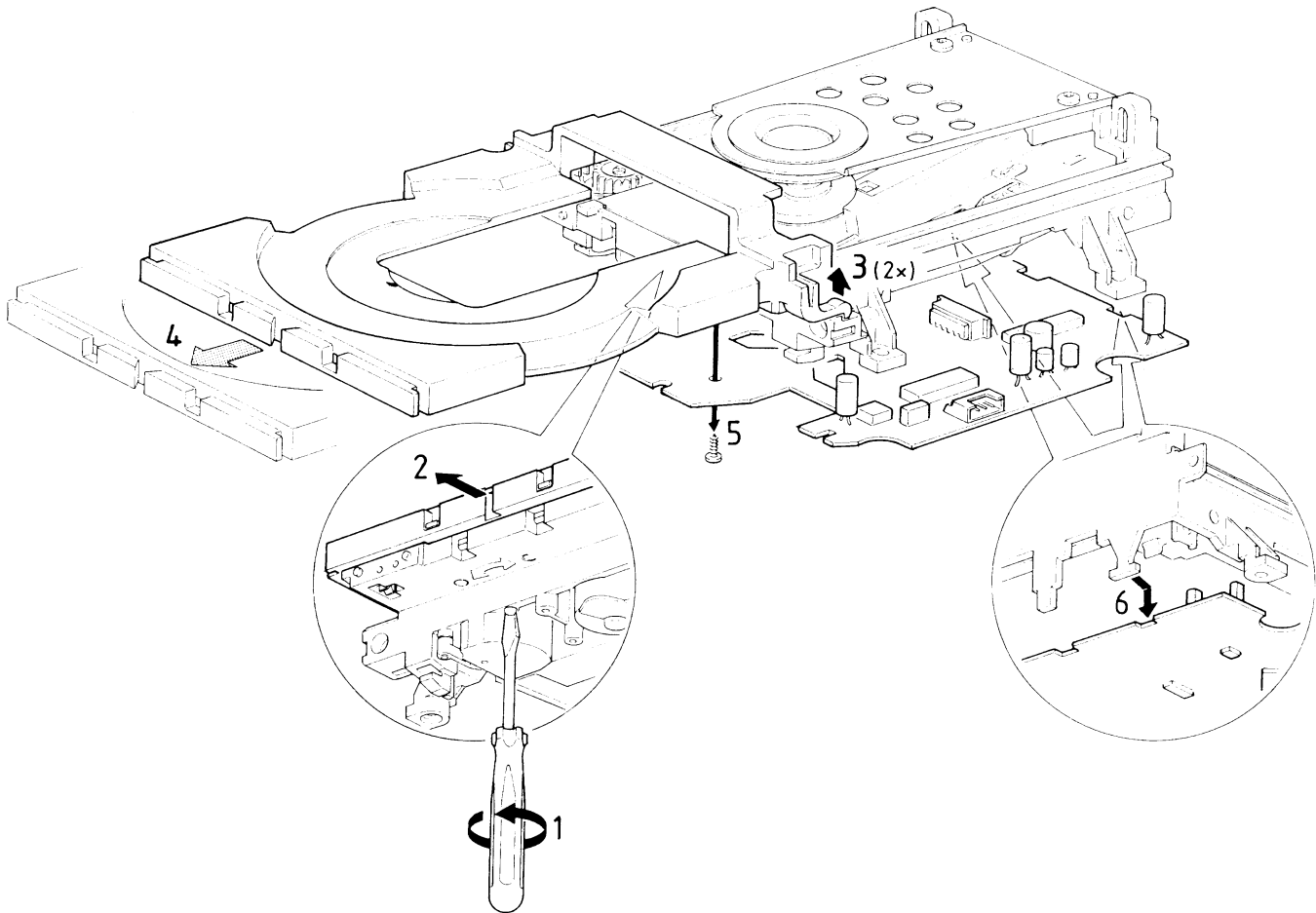


Fig. 1

### ***Assembly of gear***

- a) Use a pin (e.g. a paperclip) to align the cam wheel (a) with the gear wheel (b). See Fig. 2.
- b) Fix the wheels with the small plastic washers.

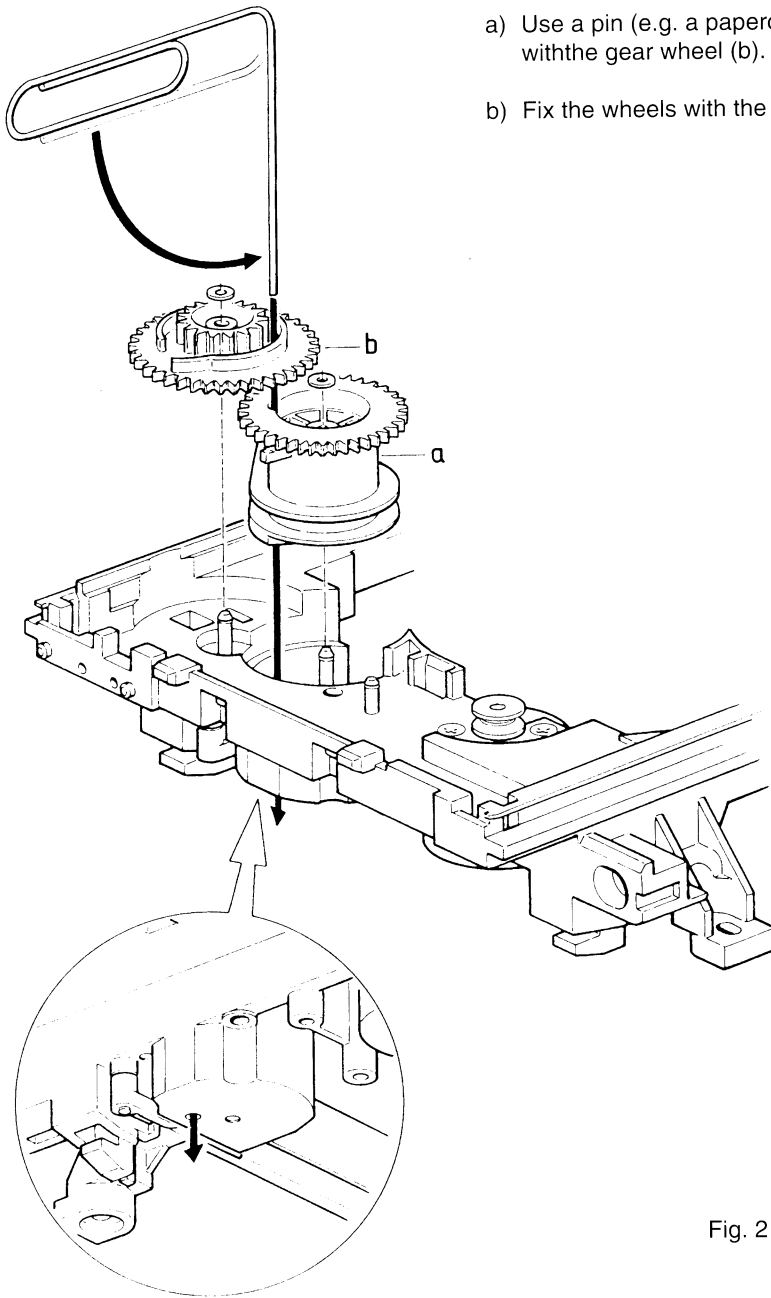


Fig. 2

- c) Mount idle wheel 2 (c) and idle wheel 1 (d) in any position. See Fig. 3.
- d) Fix the idle wheel 1 (d) with the small plastic washer.
- e) Mount the driving belt.

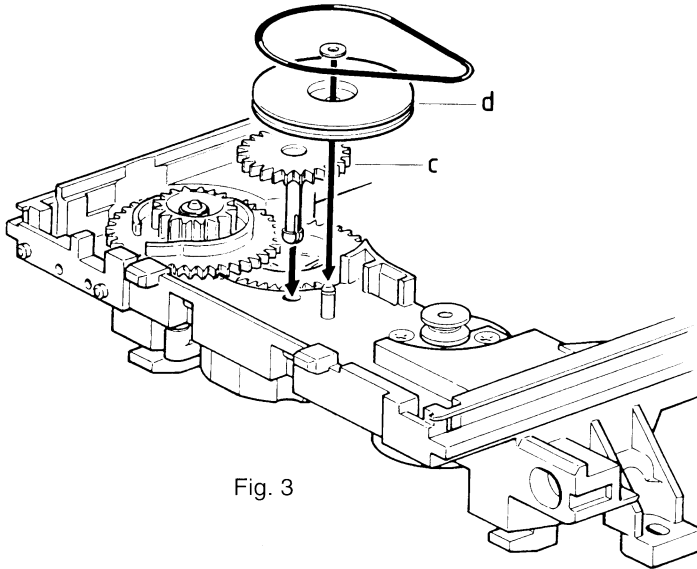


Fig. 3

- f) Mount the pinion guiding assy and the cover as shown in Fig. 4.
- g) Turn the gear wheel (b) counter clockwise to endposition.

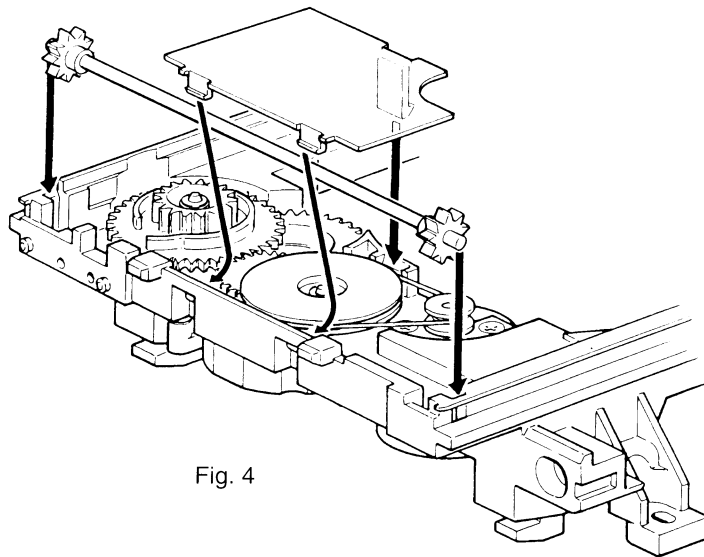


Fig. 4

- h) Mount the CD Mechanism as shown in Fig. 5.
- i) Mount the tray (Align the tray to the chassis and push it inside).

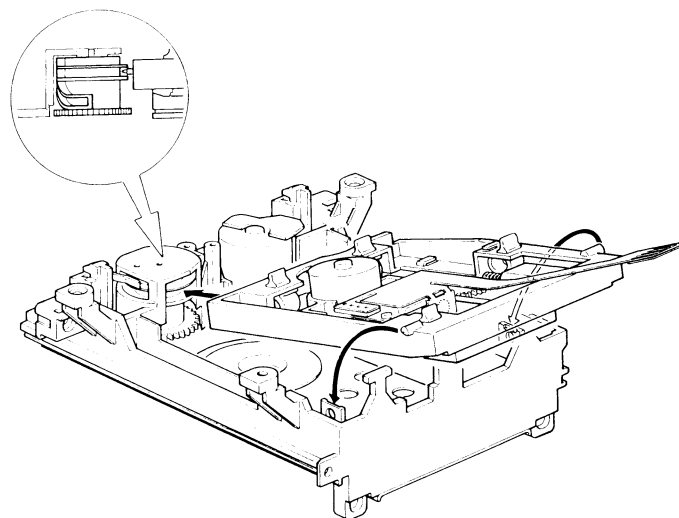


Fig. 5

### ***Check if tray mechanism works correctly!***

- 1) Turn the gear wheel (b) clockwise to its endposition (Use a small screwdriver as shown in Fig. 1 point 1).

The tray has to move to inner position first and then the CD mechanism has to move to its upper position.

- 2) Turn the gear wheel (b) counter clockwise to its endposition.

The CD Mechanism has to move to its lower position first and then the tray has to move outside.