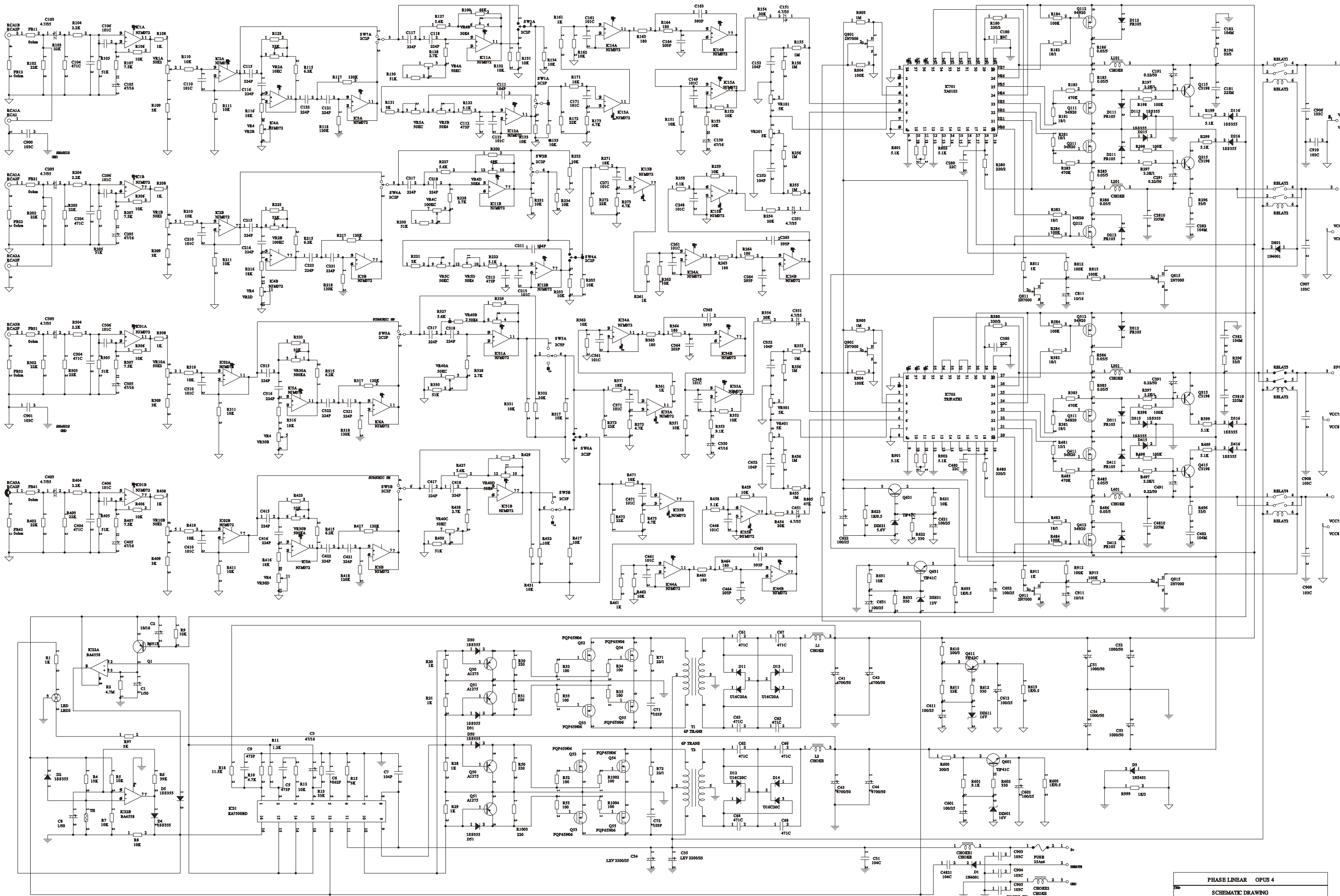
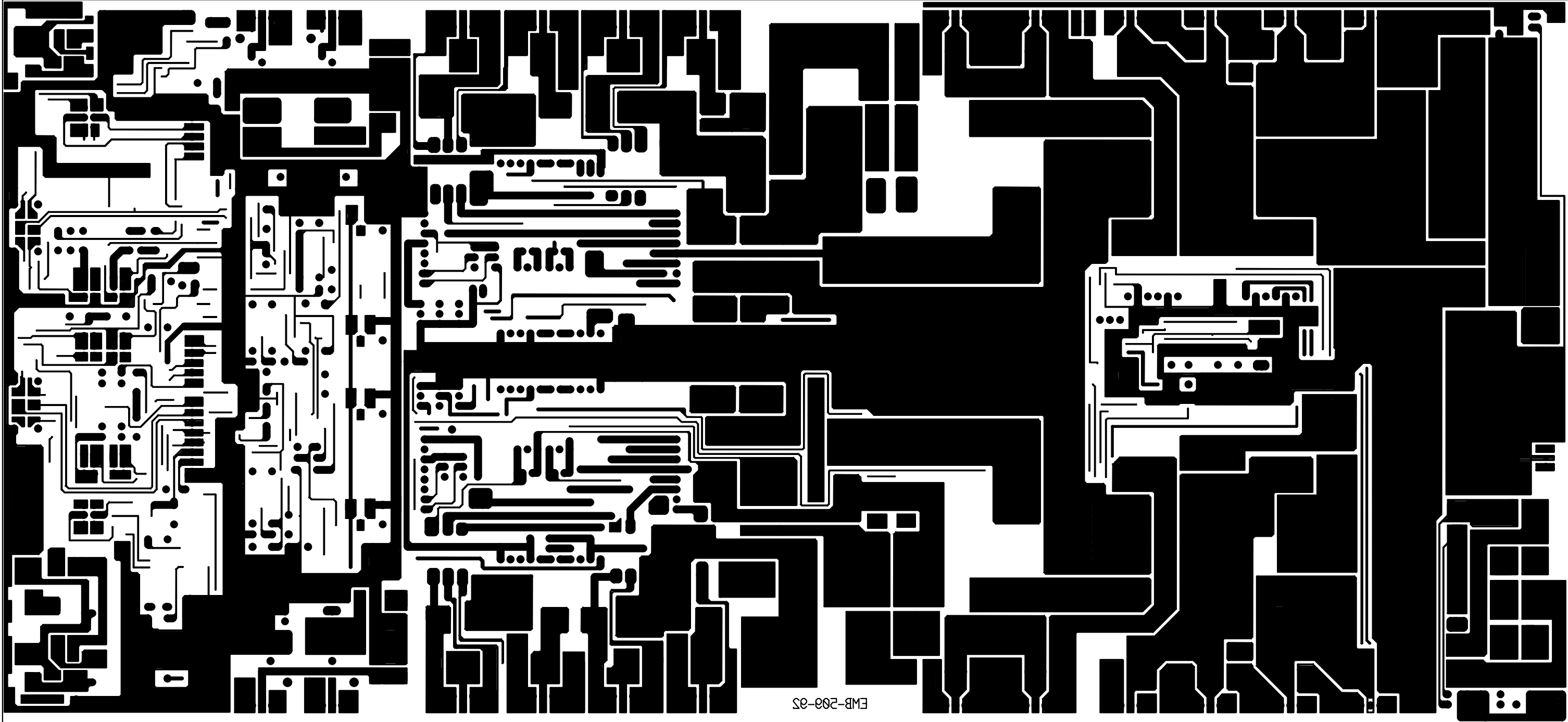




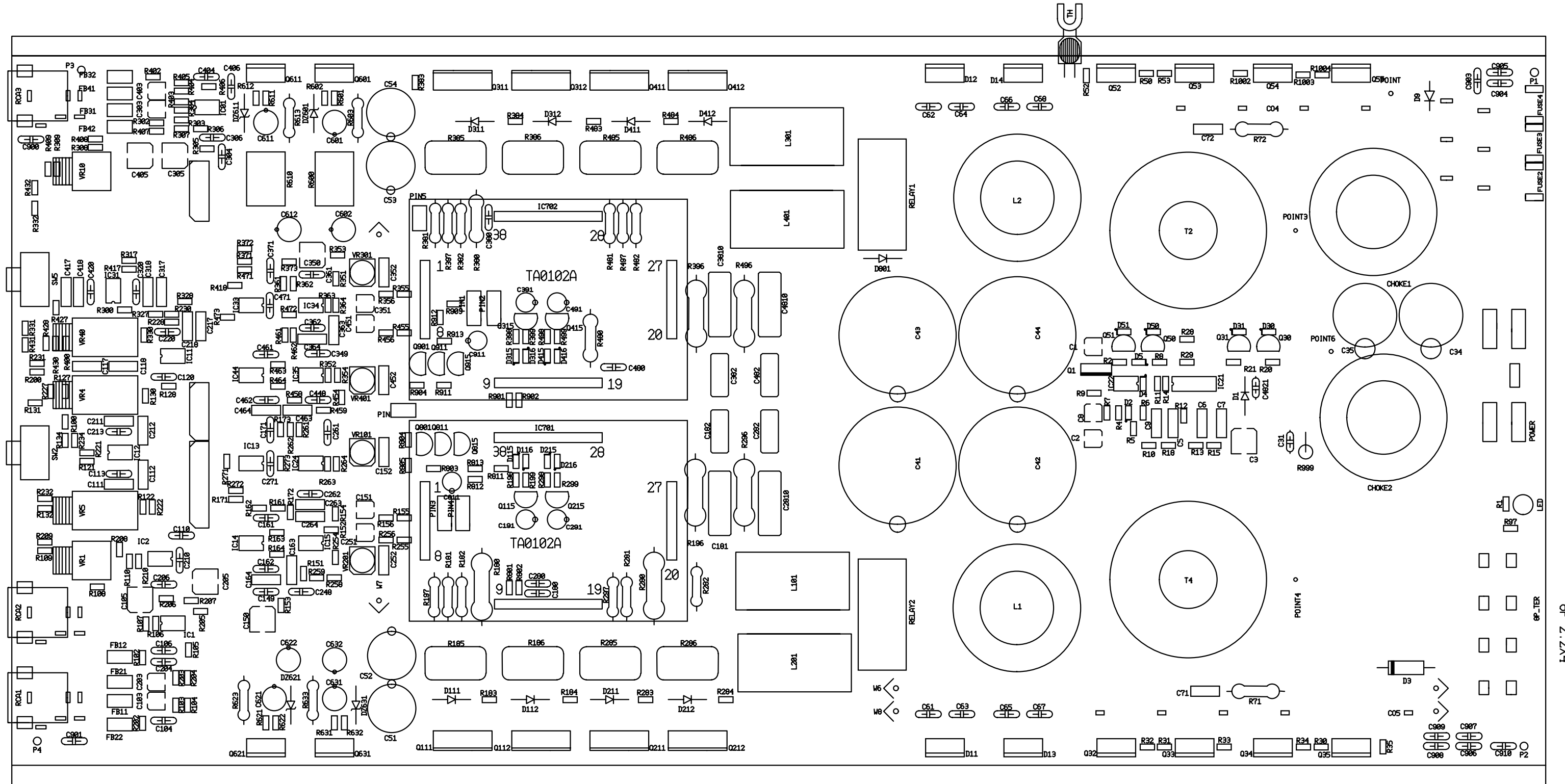
Opus 4



OPUS 4



OPUS 4



## Opus 4

**B.O.M. PHASE LINEAR OPUS 4 (Rev. 2)**

PART NUMBER	DESCRIPTION & SPECIFICATION	QTY	LOCATION NUMBER
BCHS-0990-01	HEAT SINK / MAIN HEAT SINK	1	
BCCS-0702-00	CHASSIS / FRONT CHASSIS	1	
BCCS-0702-01	CHASSIS / FRONT CHASSIS	1	
BCCS-0706-00	CHASSIS / REAR CHASSIS	1	
BCCS-0706-01	CHASSIS / REAR CHASSIS	1	
BCCC-0351-00	COVER / BOTTOM COVER(1.0t)	1	
BCCC-0351-02	COVER / BOTTOM COVER	1	
BCBK-0094-02	BRACKET / SPRING D" L=43(Ni)"	1	L=43mm
BCBK-0082-02	BRACKET / SPRING A" L=32(Ni)"	7	L=32mm
BCBK-0115-02	BRACKET/SPRING E" L=22(Ni)"	8	L=22mm
YYRS-00800803	RUBBER SPONGE/8x8x3t	1	
YYRS-05003518	RUBBER SPONGE/50X35X18t(...)	2	
YYRS-02002004	RUBBER SPONGE / 20x20x4t	2	
XHRT-03+08CZ	WRENCH BOLT TAPPING / W.H.T 3x8 T2 B	14	
XHBT-03+06CZ	TAPPING SCREW / B.H.T 3x6 T2 BK	8	
XHBT-03+04CN	TAPPING SCREW / B.H.T 3x4 T2 NI	4	
XHRM-03+06MZ	WRENCH BOLT MACHINE / W.B.M 3x6 BK	2	
XHPM-03+04MZ	MACHINE SCREW / P.H.M 3x4 BK	2	
BCBK-0092-01	BRACKET / PCB BRACKET	2	
SDLB-SPR39MV	BULK TYPE L.E.D / SPR39MV 2COLOR LEI	1	
JJR2-JC02017G	RCA JACK 2 POSITION/JC02017G .. RE/WH	3	
ER22-SM323D12	RELAY 2C 2P / SM323D12	2	
ESSL-SSB032	SWITCH SLIDE LOCKING/JSS2219 2C 2P 9	5	SW1,SW2,SW3,SW4,SW5
RSHC-0535-502	*5 SEMI F-V/R H-TYPE / RVM631HF01 5KB	4	VR101,VR201,VR301,VR401
EDWA-10-6337	SOLDER WIRE ... / SN:PB 63:37 *1.0	28	
EDWA-20-6337	SOLDER WIRE ... / SN:PB 63:37 *2.0	28	
EDBA-BA-6337	SOLDER BAR ... / SN:PB 63:37 BAR	35	
FTS8-PST00846	SCREW TERMINAL 8 POS / PST008-46	1	
FHPB-EFH00501	FUSE HOLDER BLADE(P) / EFH-005-01	3	
RVRM-SBR4030	RV096 4GB C41 15SK(B) 15C100K	2	VR2,VR30
RVRM-SBR2068	RV096 GB 15SK(B) 50KAx2 NO CLICK	2	VR1,VR10
FFON-A0000040	FUSE AUTO NON-TIME / 32V 40A	3	
RVRM-SBR4031	RV096 4GB C41 15SK(B) 15C50K	3	VR4,VR5,VR40
WLSC-R128005C	... LEAD WIRE/0.12x80 50mm	1	
ZACI-1721-3	CERAMIC INSULATOR/17x21x3t	8	Q111,Q112,Q211,Q212,Q311,Q312,□ Q411,Q412 ((METAL .))
Z0BN-LDC7091	SILICON BOND / LDC-7091	16	
FTS3-PST00351	SCREW TERMINAL 3 POS / PST-003-51	1	
ZISZ-SIR-2300	SILICONE PAD / 23m/m x10m/m 1000L	32	
AAFR058-01	OPUS 4 FRONT PCB	1	*****
SIAI-NJM072M	IC CHIP / NJM072M	5	IC3,IC4,IC5,IC6,IC02
RCBJ-2012-103	CHIP RESISTOR1/10W5% / 2.0x1.25 10K oh	10	R111,R133,R135,R211,R233,R235,□ R310,R311,R410,R411
RCBJ-2012-183	CHIP RESISTOR1/10W5% / 2.0x1.25 18K oh	4	R116,R216,R316,R416
RCBJ-2012-333	CHIP RESISTOR1/10W5% / 2.0x1.25 33K oh	4	R123,R223,R323,R423
RCBJ-2012-622	CHIP RESISTOR1/10W5% / 2.0x1.25 6.2K ol	4	R115,R215,R315,R415
RCBJ-2012-124	CHIP RESISTOR1/10W5% / 2.0x1.25 120K c	8	R117,R118,R217,R218,R321,R322,□ R421,R422
PFD2-EFB08890	FRONT PCB FR-4 2 / 234.188x124.079	1	
CCEK-CH08B10	CER 50V +/- 10 % / CH *8 BULK 100pF	2	C310,C410

## Opus 4

CBUJ-0708A224 MPF 63V +/- 5 % / 7.2x7.5 3.5 0.22uF	16	C115,C116,C121,C122,C215,C216, C221,C222,C315,C316,C321,C322, C415,C416,C421,C422
HMLF-SSS25408 2.54MM LOCK MINI CON / SSS-254-08	1	
HMLF-SSS25405 2.54MM LOCK MINI CON / SSS-254-05	2	
AAMA390-01 OPUS 4 MAIN PCB	1	*****
CIEM-4352A1R0 AL. CHIP 50V 20%/4.3x5.2 +85 1uF	2	C1,C8
CICM-4352A100 AL. CHIP 16V 20%/4.3x5.2 +85 10uF	1	C2
CIRM-4352A4R7 AL. CHIP 35V 20%/4.3x5.2 +85 4.7uF	8	C103,C151,C203,C251,C303,C351, C403,C451
CICM-6652A470 AL. CHIP 16V 20%/6.6x5.2 +85 47uF	7	C3,C105,C150,C205,C305,C350, C405
SDSC-1SS355 CHIP SWITCH DIODE / 1SS355	15	D2,D4,D5,D30,D31,D50, D51,D115,D116,D215,D216,D315, D316,D415,D416
SIAI-NJM072M IC CHIP / NJM072M	14	IC1,IC2,IC01,IC11,IC12,IC13, IC14,IC15,IC24,IC31,IC33,IC34, IC35,IC44
SIAI-KA7500BD IC CHIP / KA 7500BD	1	IC21
SIAO-4558 O.P AMP CHIP / 4558	1	IC22
RCBJ-2012-102 CHIP RESISTOR1/10W5% / 2.0x1.25 1K ohn	15	R1,R20,21,R28,R29,R108, R161,R208,R261,R308,R361,R408, R461,R811,R911
RCBJ-2012-475 CHIP RESISTOR1/10W5% / 2.0x1.25 4.7Mo	1	R2
RCBJ-2012-133 CHIP RESISTOR1/10W5% / 2.0x1.25 13K oh	1	R4
RCBJ-2012-103 CHIP RESISTOR1/10W5% / 2.0x1.25 10K oh	37	R5,R7,R8,R9,R12,R106, R110,R131,R132,R134,R151,R152, R153,R162,R206,R210,R231,R232, R234,R259,R262,R306,R317,R331, R332,R351,R352,R353,R362,R406, R417,R431,R432,R459,R462,R621, R631
RCBJ-2012-513 CHIP RESISTOR1/10W5% / 2.0x1.25 51K oh	8	R105,R130,R205,R230,R305,R330, R405,R430
RCBJ-2012-472 CHIP RESISTOR1/10W5% / 2.0x1.25 4.7K oh	5	R10,R173,R273,R373,R473
RCBJ-2012-122 CHIP RESISTOR1/10W5% / 2.0x1.25 1.2K oh	1	R11
RCBJ-2012-302 CHIP RESISTOR1/10W5% / 2.0x1.25 3.0K oh	8	R15,R97,R109,R121,R209,R221, R309,R409
RCBJ-2012-221 CHIP RESISTOR1/10W5% / 2.0x1.25 220ohr	4	R30,R31,R50,R1003
RCBJ-2012-101 CHIP RESISTOR1/10W5% / 2.0x1.25 100ohr	6	R32,R33,R34,R35,R52,R53, R1002,R1004
RCBJ-2012-223 CHIP RESISTOR1/10W5% / 2.0x1.25 22K oh	13	R102,R103,R172,R202,R203,R272, R302,R303,R372,R402,R403,R472, R611

## Opus 4

RCBJ-2012-222	CHIP RESISTOR1/10W5% / 2.0x1.25 2.2K ol	4	R104,R204,R304,R404
RCBJ-2012-104	CHIP RESISTOR1/10W5% / 2.0x1.25 100K c	14	R184,R198,R284,R298,R384,R398,□ R484,R498,R804,R812,R813,R904,□ R912,R913
RCBJ-2012-203	CHIP RESISTOR1/10W5% / 2.0x1.25 20Koh	4	R154,R254,R354,R454
RCBJ-2012-105	CHIP RESISTOR1/10W5% / 2.0x1.25 1M ohr	10	R155,R156,R255,R256,R355,R356,□ R455,R456,R803,R903
RCBJ-2012-181	CHIP RESISTOR1/10W5% / 2.0x1.25 180ohr	8	R163,R164,R263,R264,R363,R364,□ R463,R464
RCBJ-2012-183	CHIP RESISTOR1/10W5% / 2.0x1.25 18K oh	4	R171,R271,R371,R471
RCBJ-2012-474	CHIP RESISTOR1/10W5% / 2.0x1.25 470K c	4	R183,R283,R383,R483
RCBJ-2012-512	CHIP RESISTOR1/10W5% / 2.0x1.25 5.1Koh	12	R122,R199,R222,R258,R299,R399,□ R458,R499,R801,R802,R901,R902
RCBJ-2012-331	CHIP RESISTOR1/10W5% / 2.0x1.25 330ohr	3	R602,R612,R632
RCBJ-2012-473	CHIP RESISTOR1/10W5% / 2.0x1.25 47K oh	1	R805
RCBJ-2012-393	CHIP RESISTOR1/10W5% / 2.0x1.25 39K oh	1	R6
RCBJ-2012-683	CHIP RESISTOR1/10W5% / 2.0x1.25 68K oh	2	R100,R200
RCBJ-2012-562	CHIP RESISTOR1/10W5% / 2.0x1.25 5.6Koh	4	R127,R227,R327,R427
RCBJ-2012-272	CHIP RESISTOR1/10W5% / 2.0x1.25 2.7K ol	4	R128,R228,R328,R428
RCBJ-2012-912	CHIP RESISTOR1/10W5% / 2.0x1.25 9.1K ol	1	R601
PMD2-EMB5099: MAIN PCB FR-4 2 / 398x196x1.6t		1	
RCBF-20121152	CHIP RESISTOR 1/10W 1%/2.0x1.25 11.5Kc	1	R18
RCBJ-2012-333	CHIP RESISTOR1/10W5% / 2.0x1.25 33K oh	1	R13
RCBJ-2012-752	CHIP RESISTOR1/10W5% / 2.0x1.25 7.5K ol	4	R107,R207,R307,R407
RCBJ-2012-000	CHIP RESISTOR1/10W5% / 2.0x1.25 0.00oh	1	R622
RCBJ-3216-000	CHIP RESISTOR1/10W5% / 3.2x1.6 0 ohm	8	FB11,FB12,FB21,FB22,FB31,FB32,□ FB41,FB42
CBFJ-0707A473	MPF 100V +/- 5% / 7.2x6.5x2.5 0.047uF	4	C5,C9,C112,C212
CBUJ-0707A104	MPF 63V +/-5% /7.2x6.5x2.5 0.1uF	7	C7,C111,C211,C152,C252,C352,□ C452
CCEZ-F06R104	CER 50V +80% - 20% / FZ *6 BULK 0.1uF	2	C31,C4821
CEDL-1625B222	ELC 25V LXV TYPE / 16x25 +105 2200uF	2	C34,C35
CEEM-1325A102	ELC 50V +/-20 % / 12.5x25 +85 1000uF	4	C51,C52,C53,C54
CCEK-BK03B471	CER 50V +/- 10 % / BK *3 BULK 470pF	12	C61,C62,C63,C64,C65,C66,□ C67,C68,C104,C204,C304,C404
CBFJ-0707A103	MPF 100V +/- 5% / 7.2x6.5x2.5 0.01uF	2	C71,C72
CCEK-CH08B101	CER 50V +/- 10 % / CH *8 BULK 100pF	20	C106,C110,C113,C149,C161,C171,□ C206,C210,C213,C248,C261,C271,□ C306,C349,C361,C371,C406,C448,□ C461,C471
CBUJ-0708A224	MPF 63V +/- 5 % / 7.2x7.5 3.5 0.22uF	8	C117,C118,C217,C218,C317,C318,□ C417,C418
CBFJ-0707A393	MPF 100V +/- 5 % / 7.2x6.5x2.5 0.039uF	4	C163,C263,C363,C463
CBFJ-0707A203	MPF 100V +/- 5% / 7.2x6.5x2.5 0.020uF	4	C164,C264,C364,C464
CFIK-0621F225	MET 250V +/- 10% / 6x21 FOR 2.2uF	4	C181,C2810,C3810,C4810

## Opus 4

CFIK-0611B104	MET 250V +/- 10%/ 6x11 BULK 0.1uF	4	C182,C282,C382,C482
CEEM-0511AR22	ELC 50V +/-20 % / 5x11 +85 0.22uF	4	C191,C291,C391,C491
CEDM-0611A101	ELC 25V +/-20 % / 6.3x11 +85 100uF	8	C601,C602,C611,C612,C621,C622,□ C631,C632
SDRT-1N4001	AXIA52 RECTIFY DIODE / 1N4001	2	D1,D801
SDFB-U16C20A	FAST RECOVERY DIODE / U16C20A	2	D11,D13
SDFB-U16C20C	FAST RECOVERY DIODE / U16C20C	2	D12,D14
SDFB-FR105	FAST RECOVERY DIODE / FR105	8	D111,D112,D211,D212,D311,D312,□ D411,D412
SDZT-1N5246B	AXIAL52 ZENER DIODE / 1N5246B 1/2W 16	2	DZ601,DZ611
SDZT-1C5R6B	AXIAL52 ZENER DIODE / 1/2W 5.6v 1N5232	1	DZ621
SDZT-1C12B	AXIAL52 ZENER DIODE/1/2W UZB 12V 1N5	1	DZ631
SIAP-TA0102A	POWER IC / TA0102A	2	IC701,IC702
STSB-KTB631K	L PNP TRANSISTOR / KTB 631K	1	Q1
SFPK-FQP65N06	POWER N-CHANNEL FET / FQP65N06	8	Q32,Q33,Q34,Q35,Q52,Q53,□ Q54,Q55
SFPK-STW34NB	POWER N-CHANNEL FET / STW34NB20	8	Q111,Q112,Q211,Q212,Q311,Q312,□ Q411,Q412
STSC-3198BT	H NPN TRANSISTOR/KTC 3198Y TAPING	4	Q115,Q215,Q315,Q415
STSB-TIP42C	L PNP TRANSISTOR / TIP 42C	1	Q611
STSD-TIP41C	L NPN TRANSISTOR / TIP 41C	3	Q601,Q621,Q631
RMIJ-SB-102	MTL RESISTOR 2W 5% / STR BULK 1K ohm	1	R999
RMHJ-SB-220	MTL RESISTOR 1W 5% / STR BULK 22ohm	2	R71,R72
RSKK-LCR00606	CEM RESISTOR 5W 10% / LCR-006-06 0.05	8	R185,R186,R285,R286,R385,R386,□ R485,R486
RMJJ-SB-330	MTL RESISTOR 3W 5% / STR BULK 33 ohm	4	R196,R296,R396,R496
RMHJ-AT52A222	MTL RESISTOR 1W 5% / AXIAL MINI 2.2Kohm	4	R197,R297,R397,R497
RSKK-LCR90201	CEM RESISTOR 5W 10% / R TYPE 200 ohm	2	R600,R610
RFGJ-AT52A102	C.F RESISTOR1/2W 5%/AXIAL MINI TYPE 1	4	R603,R613,R623,R633
RTNK-ETF-12	THERMISTOR NTC 10 % / 150K ohm ...	1	
WLPZ-20BC095	... COPPER WIRE/BULK *2.0 L 95 H15mm	1	W7
WLCT-COT1040	COPPER TRACE / COT-104-01 16mm 4PIN	1	
WLCT-COT1060	COPPER TRACE / COT-106-04 83mm 5PIN	1	
ZSRC-CORING-E	CORE RING / CORE RING *36x3T	2	T1,T2
WLB7-134BK130	LEAD WIRE 7:7 / 0.32x41 *4 BK 130mm	1	
SFPK-2N7000	POWER N-CHANNEL FET / 2N7000 TAPPING	6	Q801,Q811,Q815,Q901,Q911,Q915
ICCR-ERC02707	*27 COMPOSITE CHOKE / ERC-027-07	2	L1,L2
RMHJ-AT52A180	MTL RESISTOR 1W 5% / AXIAL MINI 18ohm	8	R181,R182,R281,R282,R381,R382,□ R481,R482
WLPZ-20BC140	COPPER WIRE /BULK *2.0 L140.H15mm	2	W6,W8
ICCR-ERC02715	*27 CHOKE COIL / ERC-027-15	4	L101,L201,L301,L401
TTT2-EPT30088	TOROID.TRANS(W/CORE)/36*1-10-5T*1.6-2	2	T1,T2
ICCR-ERC02711	*27 CHOKE COIL / ERC-027-11	2	CHOKE1,CHOKE2
WLB7-134BK070	LEAD WIRE 7:LUG/0.18x20 *2 BK 70mm	4	
CBFJ-0707A562	MPF 100V +/- 5 % / 7.2x6.5x2.5 5600uF	1	C6
CCEZ-F-05B103	CER 50V +80% - 20% / F *5 BULK 0.01uF	10	C900,C901,C903,904,C905,C906,□ C907,C908,C909,C910
CEEM-3025A472	ELC 50V +/-20 % / 30x25 +85 4700uF	4	C41,C42,C43,C44
RMIJ-AT52A221	MTL RESISTOR 2W 5% / AXIAL MINI 220ohm	4	R180,R280,R380,R480
WLB7-134RE135	LEAD WIRE 7:7/0.32x41 *4 RE 135mm	1	
STSA-1275BT	H PNP TRANSISTOR/KTA 1275Y TAPING	4	Q30,Q31,Q50,Q51



## Opus 4

HMLF-SSS25408	2.54MM LOCK MINI CON / SSS-254-08	4	
HMLF-SSS25411	2.54MM LOCK MINI CON / SSS-254-11	4	
HMHB-P428008	2.5mm HEADER CONNECT / PH04-280-08A	1	
HMHB-P428005	2.5mm HEADER CONNECT / PH04-280-05A	2	
CECM-0511A22C	ELC 16V +/-20 % / 5x11 +85 22uF	2	C811,C911
HMHB-PH0202	2.5mm HEADER CONNECT / PIN,SINGLE 1	2	PIN,PIN5
HMSB-SH03A	SHUNT / SH03A	6	
HMHB-PH0203	2.5mm HEADER CONNECT / SINGLE 1x3	4	
SDRB-1N5401	BULK RECTIFY DIODE / STR TYPE 1N5401	1	D3
XHBT-04+20AZ	TAPPING SCREW / B.H.T 4X20 T1 BK	4	ACC' Y
XWLS-04XZ	SPRING WASHER / *4 BK	4	ACC' Y
XWSP-04XZ	PLAIN WASHER / *4 BK	4	ACC' Y
YOVB-0600805	POLY BAG / 60x80x0.05t	1	ACC'Y
YOVB-3505505	POLY BAG / 350x550x0.05t	1	SET
OCTN-OPUS400	CARTON BOX / 595x310x295	0,25	
OCTN-OPUS400	CARTON BOX / PAD 575x290	0,5	
QPSS-OPUS400	PAD / SET PAD	1	
QGPL-OPUS400	GIFT BOX	1	
QMIP-OPUS400	INSTRUCTION MANUAL	1	
QLMP-OPUS400	LABEL/MODEL LABEL	1	SET
QLSS-S11A11S	LABEL / SERIAL NO.	3	G/B,C/T,W/C
YOVB-2503505	POLY BAG / 250x350x0.05t	1	MANUAL