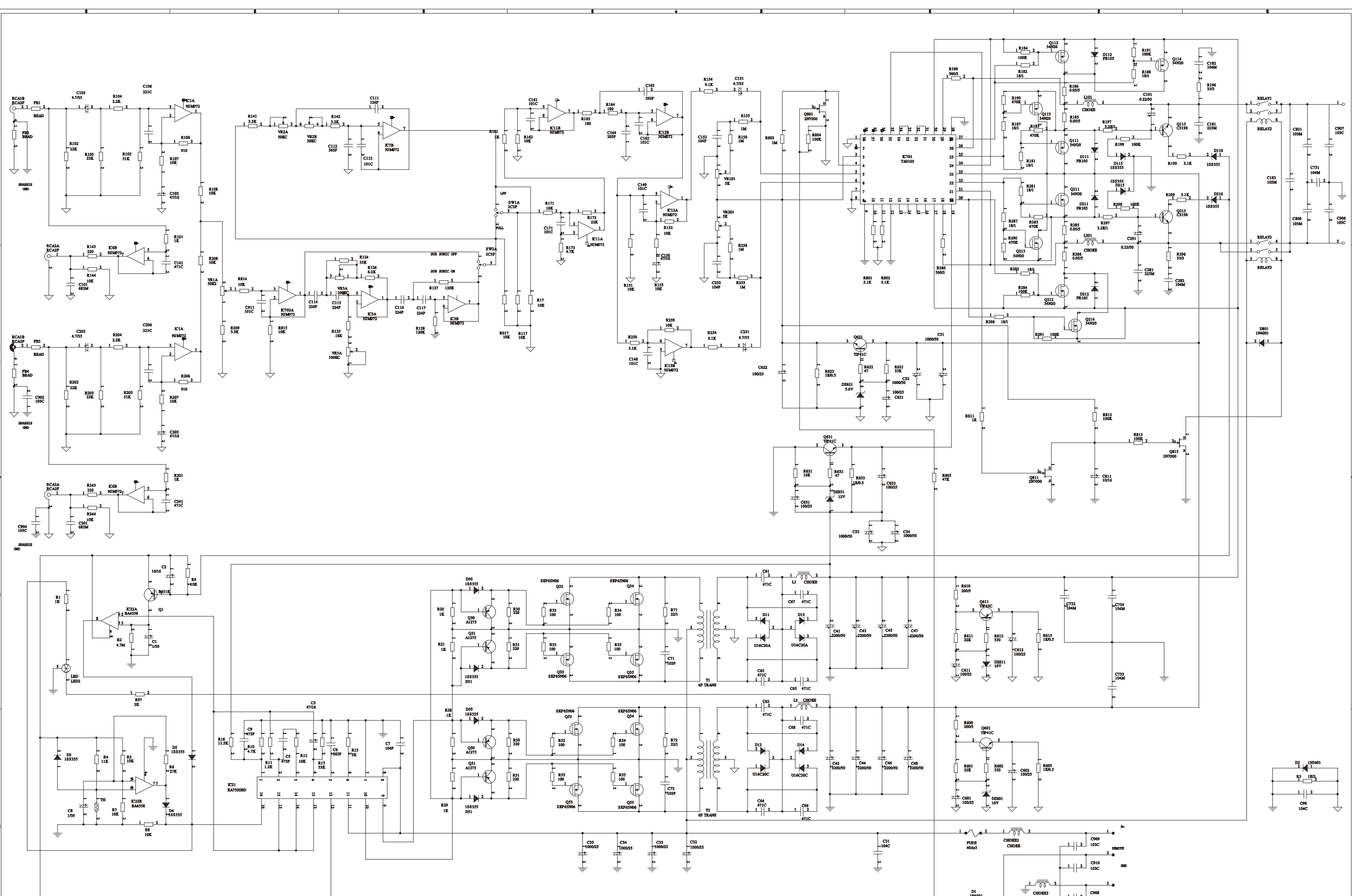
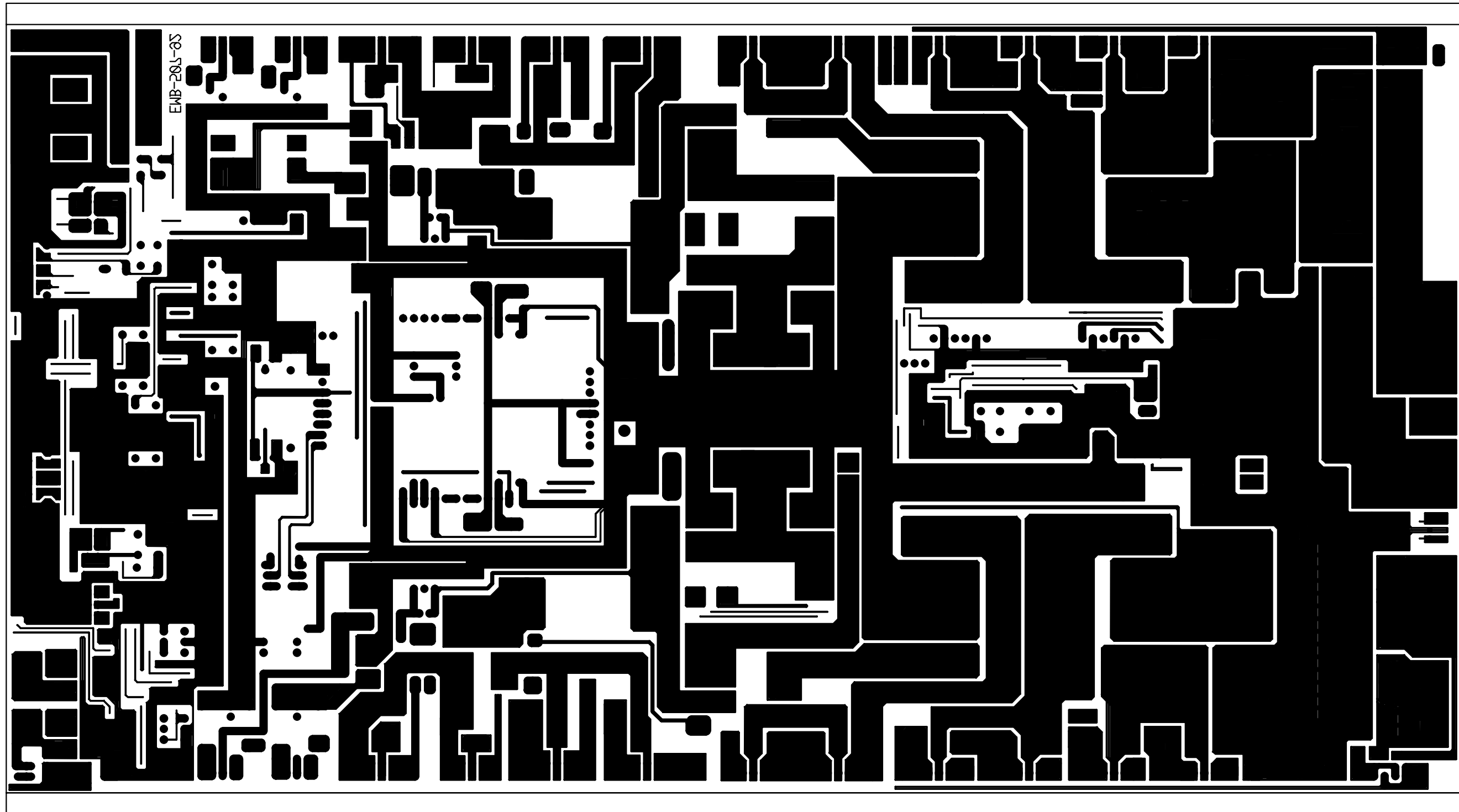




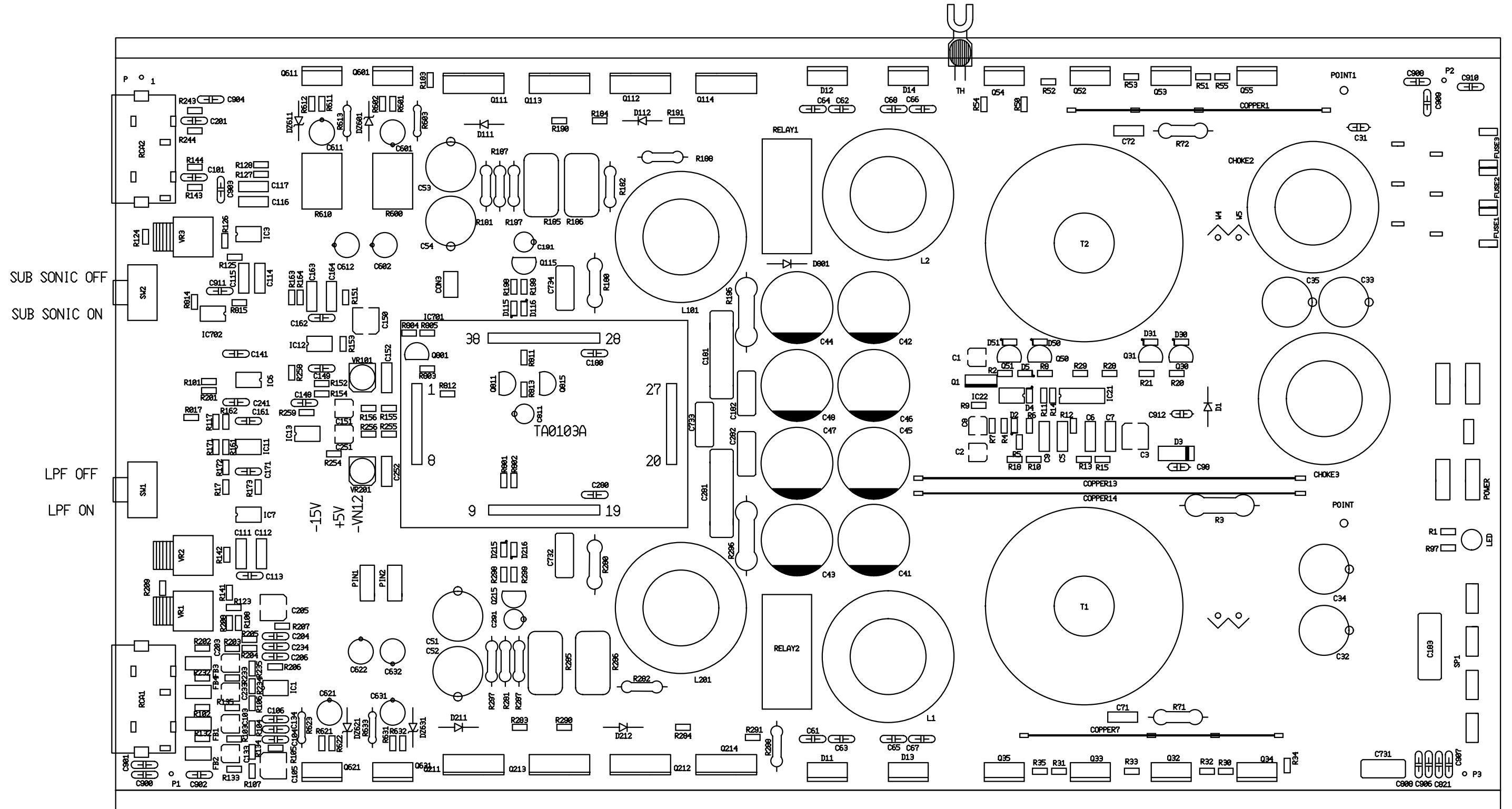
Opus 1



# OPUS 1



# OPUS 1



## Opus 1

**B.O.M. PHASE LINEAR OPUS 1 (Rev. 2)**

PART NUMBER	DESCRIPTION & SPECIFICATION	QTY	LOCATION NUMBER
BCHS-0988-01	HEAT SINK / MAIN HEAT SINK	1	
BCCS-0701-00	CHASSIS / FRONT CHASSIS	1	
BCCS-0701-01	CHASSIS / FRONT CHASSIS	1	
BCCS-0704-00	CHASSIS / REAR CHASSIS	1	
BCCS-0704-01	CHASSIS / REAR CHASSIS	1	
BCCC-0444-00	COVER / BOTTOM COVER(1.0t)	1	
BCCC-0444-01	COVER / BOTTOM COVER	1	
BCBK-0094-02	BRACKET / SPRING D" L=43(Ni)"	1	L=43mm
BCBK-0091-02	BRACKET / SPRING C" L=27(Ni)"	7	L=27mm
BCBK-0115-02	BRACKET/SPRING E" L=22(Ni)"	8	L=22mm
YYRS-00800803	RUBBER SPONGE/8x8x3t	1	THERMI
YYRS-05003518	RUBBER SPONGE/50X35X18t(...)	1	
XHRT-03+08CZ	WRENCH BOLT TAPPING / W.H.T 3x8 T2 Bt	12	F/REAR PANEL
XHBT-03+06CZ	TAPPING SCREW / B.H.T 3x6 T2 BK	6	BOTTOM COVER
XHBT-03+04CN	TAPPING SCREW / B.H.T 3x4 T2 NI	4	GROUND
FFON-A0000040	FUSE AUTO NON-TIME / 32V 40A	3	
FHPB-EFH00501	FUSE HOLDER BLADE(P) / EFH-005-01	3	
SDLB-SPR39MV	BULK TYPE L.E.D / SPR39MV 2COLOR LED	1	
EDWA-10-6337	SOLDER WIRE ... / SN:PB 63:37 *1.0	20	
EDWA-20-6337	SOLDER WIRE ... / SN:PB 63:37 *2.0	20	
EDBA-BA-6337	SOLDER BAR ... / SN:PB 63:37 BAR	25	
FTS4-PST00449	SCREW TERMINAL 4 POS / PST-004-49	1	
JJR2-JC020010	RCA JACK 2 POSITION/JC0200100G.. RE/W	2	
RSHC-0535-502	*5 SEMI F-V/R H-TYPE / RVM631HF01 5KB	2	VR101,VR201
ER12-DY313D12	RELAY 1C 2P / DY313D12H	2	
FTS3-PST00351	SCREW TERMINAL 3 POS / PST-003-51	1	
ZACI-1721-3	CERAMIC INSULATOR/17x21x3t	8	Q111,Q112,Q113,Q114,Q211,Q212,□ Q213,Q214 ((METAL.))
WLSC-R1280050...	LEAD WIRE/0.12x80 50mm	1	
Z0BN-LDC7091	SILICON BOND / LDC-7091	11	
ZISZ-SIR-2300	SILICONE PAD / 23m/m x10m/m 1000L	32	
AAMA385-01	OPUS 1 MAIN PCB	1	*****
CIEM-4352A1R0	AL. CHIP 50V 20%/4.3x5.2 +85 1uF	2	C1,C8
CICM-4352A100	AL. CHIP 16V 20%/4.3x5.2 +85 10uF	1	C2
CIRM-4352A4R7	AL. CHIP 35V 20%/4.3x5.2 +85 4.7uF	4	C103,C151,C203,C251
CICM-6652A470	AL. CHIP 16V 20%/6.6x5.2 +85 47uF	4	C3,C105,C150,C205
SDSC-1SS355	CHIP SWITCH DIODE / 1SS355	11	D2,D4,D5,D30,D31,D50,□ D51,D115,D116,D215,D216
SIAI-NJM072M	IC CHIP / NJM072M	8	IC1,IC3,IC6,IC7,IC11,IC12,□ IC13,IC702
SIAI-KA7500BD	IC CHIP / KA 7500BD	1	IC21
RCBJ-2012-102	CHIP RESISTOR1/10W5% / 2.0x1.25 1K ohm	9	R1,R20,R21,R28,R29,R101,□ R161,R201,R811
RCBJ-2012-475	CHIP RESISTOR1/10W5% / 2.0x1.25 4.7Mohm	1	R2
RCBJ-2012-103	CHIP RESISTOR1/10W5% / 2.0x1.25 10K ohm	22	R5,R7,R8,R9,R12,R017,□ R17,R107,R108,R117,R144,R151,□ R152,R153,R162,R207,R208,R244,□ R259,R631,R814,R815
RCBJ-2012-513	CHIP RESISTOR1/10W5% / 2.0x1.25 51K ohm	2	R105,R205

## Opus 1

RCBJ-2012-472	CHIP RESISTOR1/10W5% / 2.0x1.25 4.7K oh	2	R10,R173
RCBJ-2012-122	CHIP RESISTOR1/10W5% / 2.0x1.25 1.2K oh	1	R11
RCBJ-2012-302	CHIP RESISTOR1/10W5% / 2.0x1.25 3.0K oh	2	R15,R97
RCBF-20121152	CHIP RESISTOR 1/10W 1%/2.0x1.25 11.5Koh	1	R18
RCBJ-2012-221	CHIP RESISTOR1/10W5% / 2.0x1.25 220ohm	6	R30,R31,R50,R51,R143,R243
RCBJ-2012-101	CHIP RESISTOR1/10W5% / 2.0x1.25 100ohm	8	R32,R33,R34,R35,R52,R53,□ R54,R55
RCBJ-2012-223	CHIP RESISTOR1/10W5% / 2.0x1.25 22K ohm	7	R102,R103,R172,R202,R203,R 601,□ R611
RCBJ-2012-222	CHIP RESISTOR1/10W5% / 2.0x1.25 2.2K oh	2	R104,R204
RCBJ-2012-104	CHIP RESISTOR1/10W5% / 2.0x1.25 100K oh	9	R184,R191,R198,R284,R291,R 298,□ R804,R812,R813
RCBJ-2012-332	CHIP RESISTOR1/10W5% / 2.0x1.25 3.3K oh	3	R141,R142,R209
RCBJ-2012-105	CHIP RESISTOR1/10W5% / 2.0x1.25 1M ohm	5	R155,R156,R255,R256,R803
RCBJ-2012-181	CHIP RESISTOR1/10W5% / 2.0x1.25 180ohm	2	R163,R164
RCBJ-2012-183	CHIP RESISTOR1/10W5% / 2.0x1.25 18K ohm	2	R125,R171
RCBJ-2012-474	CHIP RESISTOR1/10W5% / 2.0x1.25 470K oh	4	R183,R190,R283,R290
RCBJ-2012-512	CHIP RESISTOR1/10W5% / 2.0x1.25 5.1Kohm	5	R199,R258,R299,R801,R802
RCBJ-2012-331	CHIP RESISTOR1/10W5% / 2.0x1.25 330ohm	2	R602,R612
RCBJ-2012-333	CHIP RESISTOR1/10W5% / 2.0x1.25 33K ohm	3	R13,R124,R621
RCBJ-2012-473	CHIP RESISTOR1/10W5% / 2.0x1.25 47K ohm	1	R805
BEAD-43P131	EMI FILTER / 43P131	4	FB1,FB2,FB3,FB4
PMD2-EMB50792	MAIN PCB FR-4 2 / 298x183.8x1.6t	1	
RCBJ-2012-622	CHIP RESISTOR1/10W5% / 2.0x1.25 6.2K oh	1	R126
RCBJ-2012-124	CHIP RESISTOR1/10W5% / 2.0x1.25 120K oh	2	R127,R128
RCBJ-2012-000	CHIP RESISTOR1/10W5% / 2.0x1.25 0.00ohm	2	R132,R232
SIAO-4558	O.P AMP CHIP / 4558	1	IC22
RCBJ-2012-113	CHIP RESISTOR1/10W5%/2.0x1.25 11K ohm	1	R4
RCBJ-2012-273	CHIP RESISTOR1/10W5% / 2.0x1.25 27K oh	1	R6
RCBJ-2012-912	CHIP RESISTOR1/10W5% / 2.0x1.25 9.1K oh	2	R154,R254
RCBJ-2012-470	CHIP RESISTOR1/10W5% / 2.0x1.25 47ohm	2	R622,R632
RCBJ-2012-911	CHIP RESISTOR1/10W5% / 2.0x1.25 910ohm	2	R106,R206
CBFJ-0707A473	MPF 100V +/- 5% / 7.2x6.5x2.5 0.047uF	2	C5,C9
CBFJ-0707A562	MPF 100V +/- 5% / 7.2x6.5x2.5 5600uF	1	C6
CBUJ-0707A104	MPF 63V +/-5% /7.2x6.5x2.5 0.1uF	3	C7,C152,C252
CCEZ-F06R104	CER 50V +80% - 20% / FZ *6 BULK 0.1uF	3	C31,C98,C912
CEDL-1320B102	ELC 25V LXV TYPE / 13x20 +105 1000uF	4	C32,C33,C34,C35
CEEG-1825A222	ELC 50V GOLD +/-20%/18 x 25 +85 2200uF	8	C41,C42,C43,C44,C45,C46,□ C47,C48
CEEM-1325A102	ELC 50V +/-20% / 12.5x25 +85 1000uF	4	C51,C52,C53,C54
CCEK-BK03B471	CER 50V +/- 10% / BK *3 BULK 470pF	10	C61,C62,C63,C64,C65,C66,□ C67,C68,C141,C241
CBFJ-0707A103	MPF 100V +/- 5% / 7.2x6.5x2.5 0.01uF	2	C71,C72
CMFJ-0511B682	MYL 100V +/- 5% / 5.4x11.2 BULK 6800pF	2	C101,C201
CCEJ-NP04B221	CER 50V +/- 5%/ NP *4 220pF	2	C106,C206
CBUJ-0708A124	MPF 63V +/- 5% / 7.2x7.5x3.5 0.12uF	1	C111
CBFJ-0707A563	MPF 100V +/- 5% / 7.2x6.5x2.5 0.056uF	1	C112
CCEK-CH08B101	CER 50V +/- 10% / CH *8 BULK 100pF	6	C148,C149,C161,C162,C171,C911
CBUJ-0708A224	MPF 63V +/- 5% / 7.2x7.5 3.5 0.22uF	4	C114,C115,C116,C117
CBFJ-0707A393	MPF 100V +/- 5% / 7.2x6.5x2.5 0.039uF	1	C163
CBFJ-0707A203	MPF 100V +/- 5% / 7.2x6.5x2.5 0.020uF	1	C164
CFIK-0621B225	MET 250V +/- 10% / 6x21 BULK 2.2uF	2	C181,C281

## Opus 1

CFIK-0611B104	MET 250V +/- 10%/ 6x11 BULK 0.1uF	6	C182,C282,C731,C732,C733,C734
CFIK-0616B105	MET 250V +/- 10% / 6x16 BULK 1uF	1	C183
CEEM-0511AR22	ELC 50V +/-20 % / 5x11 +85 0.22uF	2	C191,C291
CEDM-0611A101	ELC 25V +/-20 % / 6.3x11 +85 100uF	8	C601,C602,C611,C612,C621,C622,□ C631,C632
CMFJ-0611B103	MYL 100V +/- 5 % / 6.0x11.2 BULK 0.01uF	2	C808,C821
CCEZ-F-05B103	CER 50V +80% - 20% / F *5 BULK 0.01uF	7	C902,C904,C906,C907,C908,C909,□ C910
SDRT-1N4001	AXIA52 RECTIFY DIODE / 1N4001	2	D1,D801
SDFB-U16C20A	FAST RECOVERY DIODE / U16C20A	2	D11,D13
SDFB-U16C20C	FAST RECOVERY DIODE / U16C20C	2	D12,D14
SDFB-FR105	FAST RECOVERY DIODE / FR105	4	D111,D112,D211,D212
SDZT-1N5246B	AXIAL52 ZENER DIODE / 1N5246B 1/2W 16V	2	DZ601,DZ611
SDZT-1C5R6B	AXIAL52 ZENER DIODE / 1/2W 5.6v 1N5232	1	DZ621
SDZT-1C12B	AXIAL52 ZENER DIODE/1/2W UZB 12V 1N5232	1	DZ631
SIAP-TA0103A	POWER IC / TA0103A	1	IC701
STSB-KTB631K	L PNP TRANSISTOR / KTB 631K	1	Q1
SFPK-FQP65N06	POWER N-CHANNEL FET / FQP65N06	8	Q32,Q33,Q34,Q35,Q52,Q53,□ Q54,Q55
SFPK-STW34NB	POWER N-CHANNEL FET / STW34NB20	8	Q111,Q112,Q113,Q114,Q211,Q212,□ Q213,Q214
STSC-3198BT	H NPN TRANSISTOR/KTC 3198Y TAPING	2	Q115,Q215
STSB-TIP42C	L PNP TRANSISTOR / TIP 42C	1	Q611
STSD-TIP41C	L NPN TRANSISTOR / TIP 41C	3	Q601,Q621,Q631
RMIJ-SB-102	MTL RESISTOR 2W 5% / STR BULK 1K ohm	1	R3
RMHJ-SB-220	MTL RESISTOR 1W 5% / STR BULK 22ohm	2	R71,R72
RMHJ-AT52A180	MTL RESISTOR 1W 5% / AXIAL MINI 18ohm	8	R181,R182,R187,R188,R281,R282,□ R287,R288
RSKK-LCR00606	CEM RESISTOR 5W 10% / LCR-006-06 0.05ohm	4	R185,R186,R285,R286
RMJJ-SB-330	MTL RESISTOR 3W 5% / STR BULK 33 ohm	2	R196,R296
RMHJ-AT52A322	MTL RESISTOR 1W 5% / AXIAL MINI 3.2Kohm	2	R197,R297
RSKK-LCR90201	CEM RESISTOR 5W 10% / R TYPE 200 ohm	2	R600,R610
RTNK-ETF-12	THERMISTOR NTC 10 % / 150K ohm ...	1	
WLPZ-20BC095	COPPER WIRE/BULK *2.0 L 95 H15mm	2	W4,W5
WLCT-COT1050	COPPER TRACE / COT-105-03 67mm 4PIN	2	COP 1, 7
WLCT-COT1070	COPPER TRACE/COT-107-02 96mm 2PIN	2	COP 13,14
CECM-0511A100	ELC 16V +/-20 % / 5x11 +85 10uF	1	C811
ZSRC-CORING-E	CORE RING / CORE RING *36x3T	2	T1,T2
WLB7-134BK160	LEAD WIRE 7:7 / 0.32x41 *4 BK 160mm	1	
SFPK-2N7000	POWER N-CHANNEL FET / 2N7000 TAPPING	3	Q801,Q811,Q815
RMIJ-AT52A561	MTL RESISTOR 2W 5% / AXIAL MINI 560ohm	2	R180,R280
RFGJ-AT52A102	C.F RESISTOR 1/2W 5%/AXIAL MINI TYPE 1	4	R603,R613,R623,R633
ICCR-ERC03301	*33 FILTER CHOK / ERC-033-01	2	L101,L201
ICCR-ERC02707	*27 COMPOSITE CHOKE / ERC-027-07	2	L1,L2
TTT2-EPT30083	TOROID.TRANS(W/CORE)/40*1-10-5T*1.6-2	2	
ICCR-ERC02711	*27 CHOKE COIL / ERC-027-11	2	CHOKE 2, CHIKE 3
WLB7-202BK07	LEAD WIRE 7:LUG/0.18x20 *2 BK 70mm	4	
STSA-1275BT	H PNP TRANSISTOR/KTA 1275Y TAPING	4	Q30,Q31,Q50,Q51
HMLF-SSS25408	2.54MM LOCK MINI CON / SSS-254-08	2	
HMLF-SSS25411	2.54MM LOCK MINI CON / SSS-254-11	2	

## Opus 1

HMHB-PH0202	2.5mm HEADER CONNECT / PIN,SINGLE 1)	1	
RVRM-SBR2068	RV096 GB 15SK(B) 50KAx2 NO CLICK	1	VR1
RVRM-SBR2069	RV096 GB C41 15SK(B) 15C 50K	1	VR2
RVRM-SBR2063	ROTARY MAIN VOLUME / 100KCx2 41CLICK	1	VR3
ESSL-SSB032	SWITCH SLIDE LOCKING/JSS2219 2C 2P 9i	2	
WLPX-R7A052	COPPER WIRE/*0.7 AXIAL TYPE 52mm	1	
SDRB-1N5401	BULK RECTIFY DIODE / STR TYPE 1N5401	1	D3
XHBT-04+20AZ	TAPPING SCREW / B.H.T 4X20 T1 BK	4	ACC' Y
XWLS-04XZ	SPRING WASHER / *4 BK	4	ACC' Y
XWSP-04XZ	PLAIN WASHER / *4 BK	4	ACC' Y
YOVB-0600805	POLY BAG / 60x80x0.05t	1	ACC'Y
YOVB-3505005	POLY BAG / 350x500x0.05t	1	SET
OCTN-OPUS100	CARTON BOX / 545x310x295	0,25	
OCTN-OPUS100	CARTON BOX / PAD 525x290	0,5	
QPSS-OPUS100	PAD / SET PAD	1	
QGPL-OPUS100	GIFT BOX	1	
QMIP-OPUS100	INSTRUCTION MANUAL	1	
QLMP-OPUS100	LABEL/MODEL LABEL	1	SET
QLSS-S11A11SS	LABEL / SERIAL NO.	3	G/B,C/T,W/C
YOVB-2503505	POLY BAG / 250x350x0.05t	1	MANUAL