

# BILL OF MATERIALS REPORT

BOARD NAME: TRI12PRE REPORT DATE: 23OCT00  
 ASSEMBLY LEVEL NUMBER: 99099001 DESIGNER: GARY GOODIN  
 PROJECT NUMBER: P9900099

| CBDS<br>PART | PART     | DESCRIPTION AND  |
|--------------|----------|--|
| ** QTY.      | NAME     | VALUE NUMBER DEVICE DESIGNATIONS *****   |
| 1            | 72100660 | 72100660 ECN#0019 PCB  |
| 5            | .0015S   | .0015 70300037 .0015MF X7R 50V 10% SMT 1206  |
|              |          | C5, C309, C310, C317, C318   |
| 4            | .001S    | .001 70300036 .001MF X7R 50V 10% SMT 1206  |
|              |          | C15, C16, C36, C203  |
| 4            | .0022S   | .0022 70300019 .0022MF-X7R-----10%-SMT   |
|              |          | C4, C6, C22, C315  |
| 1            | .0068M   | .0068M 70330117 .0068mf---5%---50vdc---my---t&a  |
|              |          | C10  |
| 1            | .015S    | .015 70300024 .015UF--SURFACE MNT--1206 PACK   |
|              |          | C8   |
| 4            | .047S    | .047 70300027 .047----SURFACE MNT--1206 PACK   |
|              |          | C9, C11, C12, C14  |
| 10           | .1P10S   | .1p10 70300028 .1mfd x7r 50v 10% 1206  |
|              |          | C20, C23, C25, C26, C27, C28, C29, C30, C31, C32   |
| 53           | .1S      | .1 70300035 .1MF Z5U 50V 20% SMT 1206  |
|              |          | C1, C100, C102, C103, C104, C108, C109, C110, C111, C112, C113, C114, C122, C123, C200, C201, C202, C208, C300, C302, C304, C308, C313, C314, C320, C322, C323, C324, C325, C401, C402, C403, C404, C500, C502, C504, C509, C510, C511, C512, C513, C514, C515, C602, C603, C605, C606, C607, C609, C700, C701, C703, C705 |
| 3            | .1SF     | .1SF 70330113 0.10 MFD 10% 100V STCK FILM T&A  |
|              |          | C3, C600, C601   |
| 2            | .22SF2   | .22SF2 70330114 0.22 MF 5% 100V STCK FILM t&a  |
|              |          | C2, C17  |

|    |          |          |          |   |
|----|----------|----------|----------|---|
| 1  | 1.3KS    | 1.3K     | 70200062 | 1.3K---1/8W--5%---SM  |
|    |          |          |          | R51   |
| 5  | 1.5KS    | 1.5K     | 70200020 | 1.5K--1/8W--5%---smt  |
|    |          |          |          | R19, R41, R42, R43, R58   |
| 5  | 100KS    | 100K     | 70200034 | 100K---1/8W--5%---SM  |
|    |          |          |          | R9, R11, R32, R40, R93  |
| 1  | 100PFS   | 100PF    | 70300044 | 100PF COG 50V 5% SMT 1206   |
|    |          |          |          | C107  |
| 2  | 100S     | 100      | 70200013 | 100---1/8W--5%---smt  |
|    |          |          |          | R501, R506  |
| 27 | 10KS     | 10K      | 70200028 | 10K--1/8W--5%---SMT   |
|    |          |          |          | R35, R102, R104, R105, R108, R112, R113, R301, R303, R305, R306, R310, R505, R511, R512, R513, R514, R515, R516, R517, R518, R519, R520, R521, R522, R610, R702 |
| 1  | 10PFS    | 10PF     | 70300010 | 10PF COG 50V 5% SMT 1206  |
|    |          |          |          | C207  |
| 4  | 10R50L   | 10R50L   | 70320185 | 10MF-----20%---50VDC---LL--T&A  |
|    |          |          |          | C306, C312, C505, C708  |
| 1  | 11.289M  | 11.289M  | 70800026 | 11.2894 MHZ CRYSTAL   |
|    |          |          |          | Y200  |
| 2  | 12KS     | 12K      | 70200029 | 12K--1/8W--5%---SMT   |
|    |          |          |          | R55, R706   |
| 4  | 12SRHDRU | 73717071 | 73717071 | 12 PIN .100 S/R HEADER .135/.360  |
|    |          |          |          | J800, J801, J901, J903  |
| 4  | 13.7KP1S | 13.7KP1S | 70200106 | 13.7K 1/8W--1%---SMT 1206   |
|    |          |          |          | R307, R311, R318, R320  |
| 1  | 133KP1   | 133KP1   | 70240133 | 133K 1% 1/4W MF T&R   |
|    |          |          |          | R3  |
| 1  | 14DRHDR  | 73717040 | 73717040 | CONN 14-PIN 0.100 H   |
|    |          |          |          | P401  |
| 2  | 150KP1   | 150KP1   | 70241035 | 150K--1/4W--1%---MF--T&R  |
|    |          |          |          | R22, R25  |
| 1  | 150S     | 150      | 70200014 | 150---1/8W--5%---smt  |

|    |          |          |          |   |
|----|----------|----------|----------|---|
|    |          |          |          | R314  |
| 8  | 1740     | 1740     | 70401740 | 2SC1740SLN 40V,1A, NPN, LOW NOISE T&A   |
|    |          |          |          | Q1, Q2, Q3, Q4, Q5, Q6, Q7, Q8  |
| 1  | 18KS     | 18K      | 70200030 | 18K--1/8W--5%---SMT   |
|    |          |          |          | R15   |
| 27 | 1KS      | 1K       | 70200019 | 1k---1/8W--5%---smt   |
|    |          |          |          | R38, R56, R57, R100, R103, R106, R107, R109, R110, R211, R212, R213, R214, R216, R217, R218, R219, R325, R326, R500, R503, R504, R507, R509, R601, R605, R607 |
| 3  | 1MS      | 1M       | 70200036 | 1M---1/8W--5%---SMT   |
|    |          |          |          | R88, R210, R609   |
| 1  | 1N4001S  | 1N4001   | 70418103 | 1N4001 50V 1.6A DIODE SMT   |
|    |          |          |          | CR701   |
| 19 | 1N4148S  | 4148     | 70418026 | 1N4148 (LL34) DIODE SMT   |
|    |          |          |          | CR1, CR2, CR3, CR6, CR15, CR300, CR301, CR302, CR303, CR304, CR305, CR401, CR402, CR500, CR600, CR601, CR602, CR700, CR702                                    |
| 1  | 1N751S   | 1N751    | 70418027 | 5.1V, 5%, 500MW, ZENER, SMT (LL34)  |
|    |          |          |          | CR501   |
| 3  | 1R50     | 1R50     | 70320261 | 1MF 20% 50 VDC EL T&A   |
|    |          |          |          | C301, C303, C321  |
| 3  | 2.2KS    | 2.2K     | 70200021 | 2.2K---1/8W--5%---smt   |
|    |          |          |          | R37, R47, R701  |
| 1  | 2.2MS    | 2.2M     | 70200037 | 2.2M--1/8W--5%---SMT  |
|    |          |          |          | R44   |
| 1  | 2.2R50   | 2.2R50   | 70320180 | 2.2MF-----20%---50VDC---EL--T&A   |
|    |          |          |          | C19   |
| 2  | 2.2T25   | 2.2T25   | 70340087 | 2.2 MF,10%,25VDC,TANTALUM T&A   |
|    |          |          |          | C506, C508  |
| 4  | 2.55KP1S | 2.55KP1S | 70200111 | 2.55k--1/8W--1%---SMT   |
|    |          |          |          | R308, R312, R319, R321  |
| 1  | 2.7UHA   | 2.7UH    | 70502027 | 2.7UH INDUCTOR T&R  |
|    |          |          |          | L201  |
| 4  | 20KP1S   | 20kp1    | 70200059 | 20k---1/8W--1%---SMT  |

R304, R313, R317, R322

1 20PFS 20PF 70300058 20PF-SURFACE MNT--1206 PACK

C206

8 220KS 220K 70200044 220K--1/8W--5%---SMT

R52, R59, R62, R65, R68, R71, R74, R77

4 220PFS 220PF 70300051 220PF----SURFACE MNT--1206 PACK

C305, C311, C316, C319

6 220S 220 70200016 220---1/8w--5%---smt

R215, R316, R700, R703, R704, R705

13 22KS 22K 70200031 22K--1/8W--5%---SMT

R34, R80, R81, R82, R83, R84, R85, R86,  
R87, R90, R502, R510, R608

10 22R50 22R50 70320181 22MF-----20%---50VDC--EL--T&A

C13, C21, C24, C33, C34, C35, C702,  
C704, C706, C707

1 240KS 240K 70200072 240K--1/8W--5%---SM

R20

1 243KPI 243KPI 70241037 243---1/4W--1%---MF--T&R

R27

1 243KPIs 243KPIs 70200124 243K--1/8W--1%---SMT 1206

R8

1 24C04 24C04 70402774 NM24C04 512 BYTE EEPROM

U501

9 250STW 70901856 70901856 SPCR, L4,R(#4),.187 SW,AL

SO701, SO702, SO703, SO704, SO705,  
SO706, SO707, SO708, SO709

1 270PFS 270pf 70300052 270pf 50wvdc 10% x7 1206

C18

1 27CS12/7 27CS12/7 70402777 512KBIT, UV EPROM, 70NS

U506

11 2N3919S 3919 70418034 2N3919 NPN (SOT-23) XSISTOR SMT

Q19, Q20, Q21, Q22, Q23, Q24, Q25, Q26,  
Q27, Q501, Q502

2 2N6534S 6534 70418033 2N6533/34 PNP (SOT-23) XSISTOR SMT

Q600, Q601

2 3.3KS 3.3K 70200023 3.3K--1/8W--5%---smt

R49, R50

6 330PFS 330PF XX330PFS 330PF---SURFACE MNT--1206 PACK

C709, C710, C711, C712, C713, C714

4 33KS 33K 70200063 33K--1/8W--5%---SM

R6, R94, R602, R606

1 36MHZ 36MHZ 70800022 36.000MHZ CRYSTAL

Y201

1 37.4KPI 37.4KPI 70240052 37.4K-1/4W--1%---MF--T&R

R1

15 39PFS 39PF 70300012 39PF COG 50V 5% SMT 1206

C7, C37, C105, C106, C115, C116, C117,  
C204, C205, C326, C327, C328, C329,  
C330, C604

1 4.53KPI 4.53KPI 70240109 4.53K 1% 1/4W MF T&R

R13

1 4.7KS 4.7K 70200025 4.7K--1/8W--5%---smt

R36

2 4.7S 4.7 70200041 4.7--1/8W--5%---SMT

R300, R302

4 4560H 4560 70418053 4560 DLOP AMP SOIC-8

U301, U302, U403, U600

11 470KS 470K 70200035 470K--1/8W--5%---SMT

R4, R5, R10, R14, R28, R30, R31, R45,  
R48, R209, R603

1 470PFS 470PF 70300047 470PF COG 50V 5% SMT 1206

C101

2 470R6.3 470R6.3 70320183 470MF-----20%---6.3VDC--EL--T&A

C501, C507

1 470S 470 70200046 470--1/8W--5%---SMT

R39

2 47FP 47FP 70240090 47FP--1/4W--5%---FP--T&R

R315, R327

17 47KS 47K 70200032 47K--1/8W--5%---SMT

R2, R16, R17, R33, R53, R61, R64, R67,  
R70, R73, R76, R79, R89, R91, R92, R323,  
R324

1 47R35 47R35 70320344 47UF--20%--35VDC--EL--T&A

C307

1 47S 47 70200012 47---1/8w--5%---smt

R220

1 56002TQP 56002TQP 70406002 MOTOROLA 56002 DSP TQFP

U100

1 58258-20 58258-20 70418068 32K X8 STATIC RAM IC-SMT

U507

2 64KX16 64KX16 70418200 64KX16 STATIC RAM ICOSMT 15NS

U200, U201

1 680S 680 70200018 680---1/8w--5%---smt

R46

2 68KS 68K 70200033 68K--1/8W--5%---SMT

R18, R23

2 68S 68 70200053 68---1/8W--5%---SMT

R111, R508

1 6N138 6N138 70400138 6N138 OPTOCOUPLER

U700

1 74HC00H 74HC00 70418009 74HC00 (SO14) SMT

U502

1 74HC08H 74HC08 70418001 74HC08 (SO14) SMT

U510

2 74HC138H 74HCT138 70418021 74HC138 (SO16) SMT

U508, U509

2 74HC161H 74HC161 70418037 74HC161 (SO16) SMT

U303, U304

1 74HC32H 74HC32 70418019 74HC32 (SO14) SMT

U701

3 74HC573H 74HC573 70418041 74HC573 (SOL20) SMT

U503, U504, U505

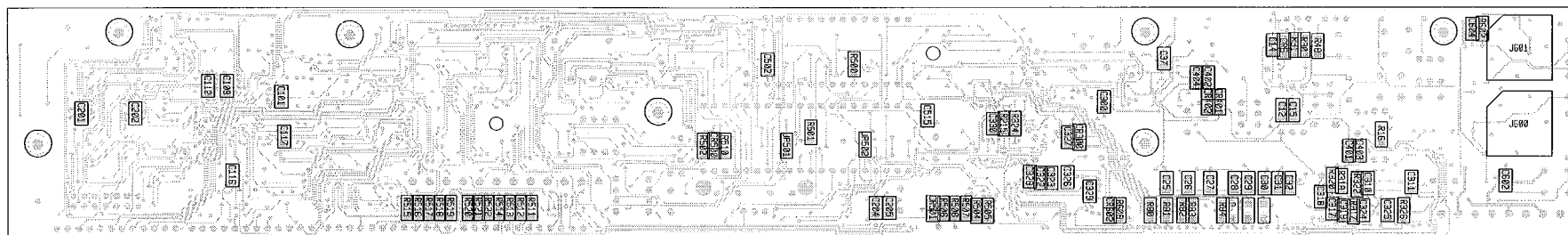
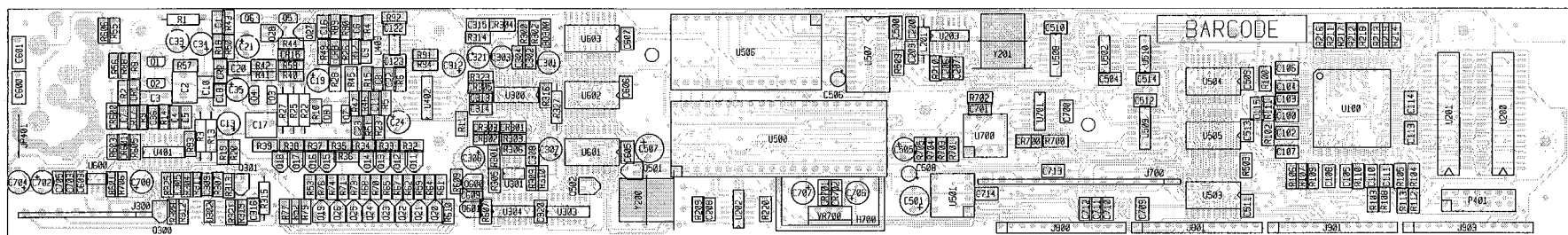
3 74HC574H 74HC574 70418024 74HC574 (SOL-20) SMT

U601, U602, U603

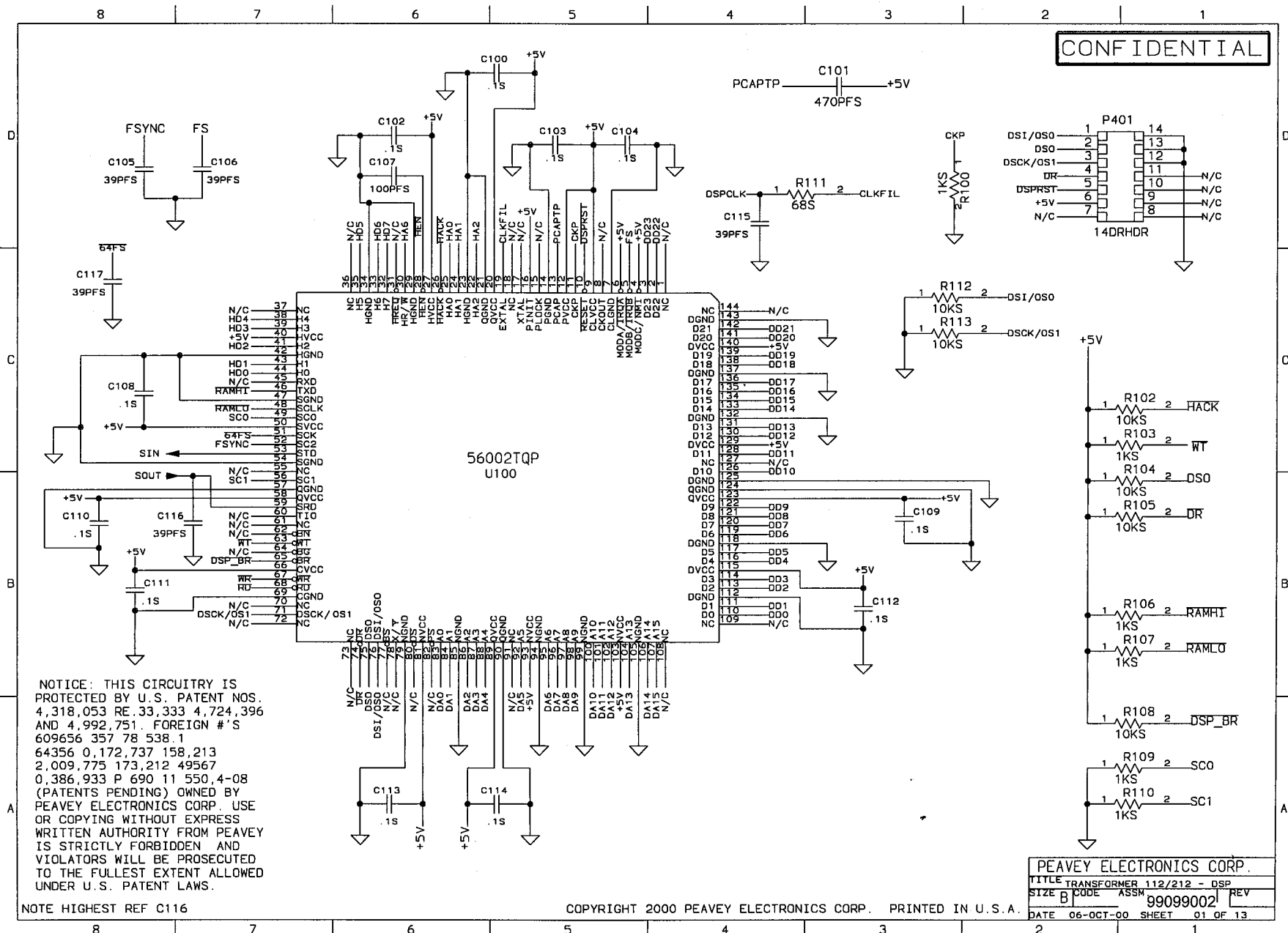
2 74HCU04H 74HCU04 70418043 74HCU04 (SO14) SMT

U202, U203

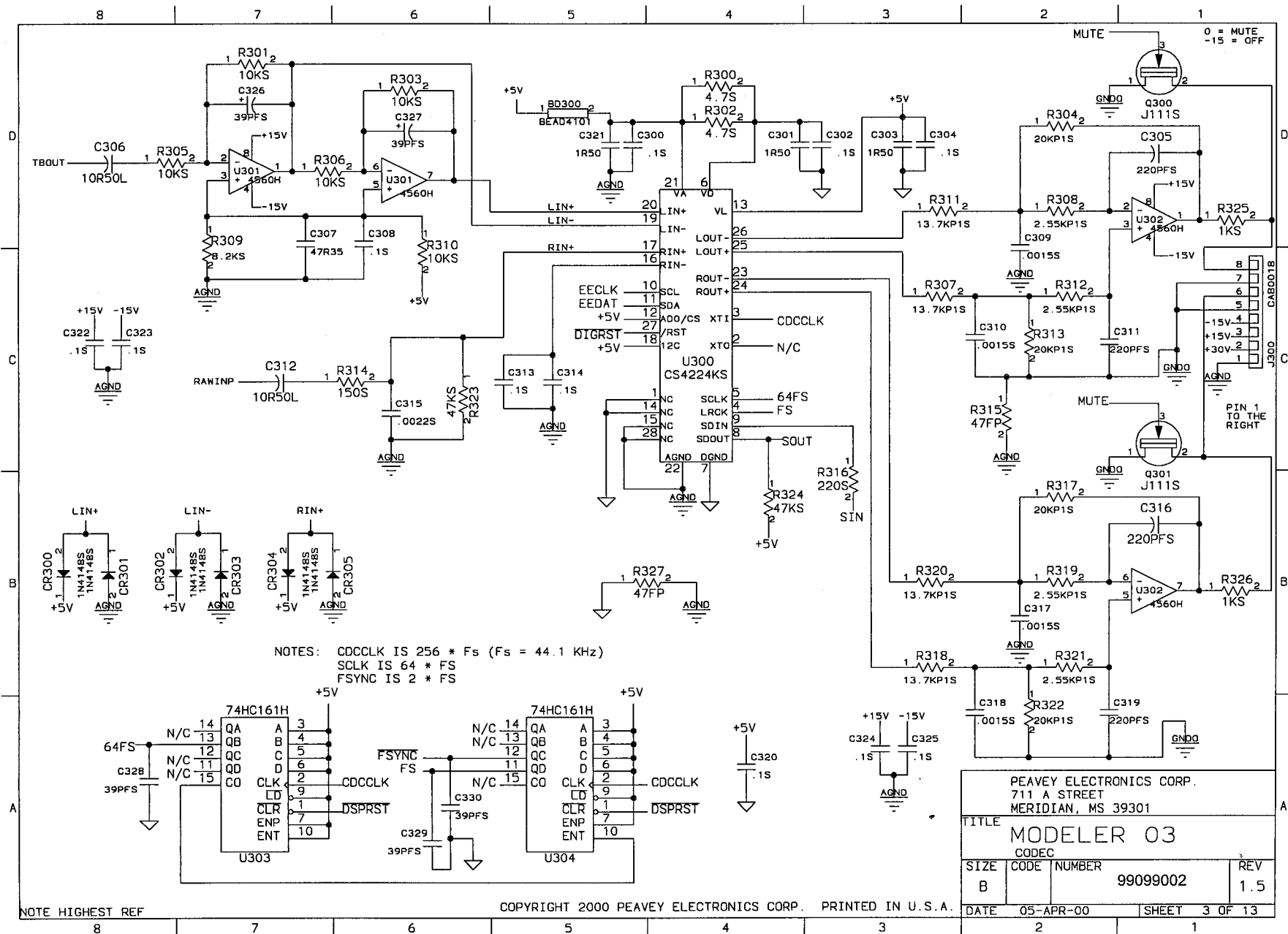
1 7805VERT 7805VERT 70427805 VR CT REG VERTICAL MNT  
VR700  
1 8.2KS 8.2K 70200042 8.2K--1/8W--5%---SMT  
R309  
1 80C32-36 80C32-36 70400030 80C32 36MHZ MICROPROC.  
U500  
2 82KS 82K 70200112 82K-1/8W-5%-SMT-1206  
R12, R26  
1 BEAD4101 FB 70504101 BLM41A01-PT FERRITE CHIP  
BD300  
1 CAB0018 70600018 70600018 8C .156 - 5" JMPR W/FEED-TO CONN.  
J300  
1 CAB0119 70600119 70600119 12C PRE-TIN .156 - 5" CONN.  
J700  
1 CS4224KS CS4224K 70418199 STEREO 24-BIT CODEC SMT SSOP  
U300  
2 HIDSNI 71466217 71466217 STEREO HID JACK NINS W/SPD  
J600, J601  
1 HS0629 70900629 70900629 AAVID VERTICAL TO-220 HEATSINK  
H700  
2 J111S J111 70418138 J111 N-CH JFET SOT23-SMT  
Q300, Q301  
9 J174S J174 70418139 J-174 P-CHNL JFET 30V SOT-23  
Q11, Q12, Q13, Q14, Q15, Q16, Q17, Q18,  
Q28  
1 JMP JMP 70600005 22 GA. JUMPER WIRE T&R  
JP401  
2 JMPS JMP 70200010 0.0---1/8w--5%---smt  
JP501, JP502  
2 MAX364GH MAX364 70418160 MAX364 QUAD ANALOG SW - SMT  
U401, U402

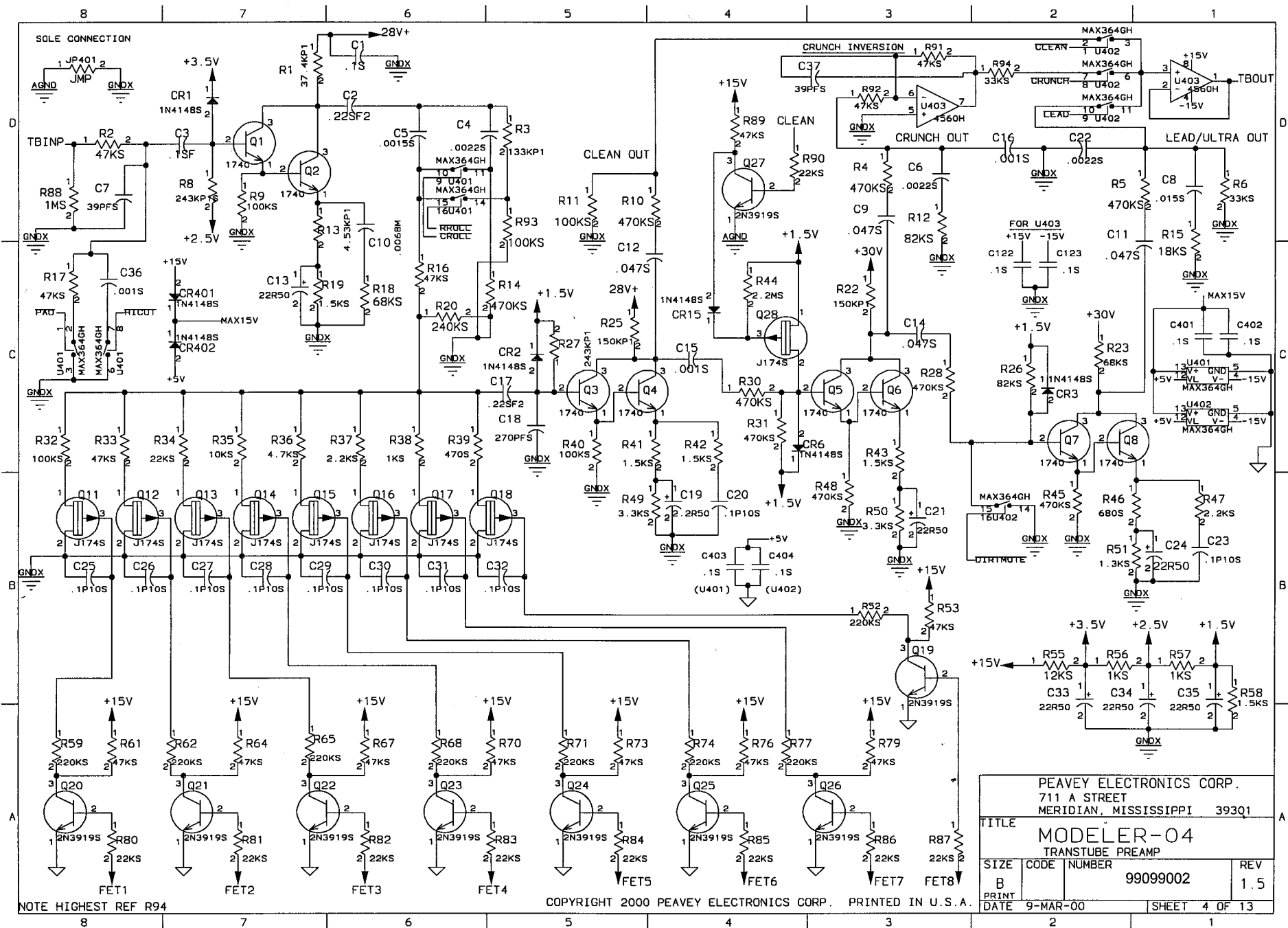


CONFIDENTIAL

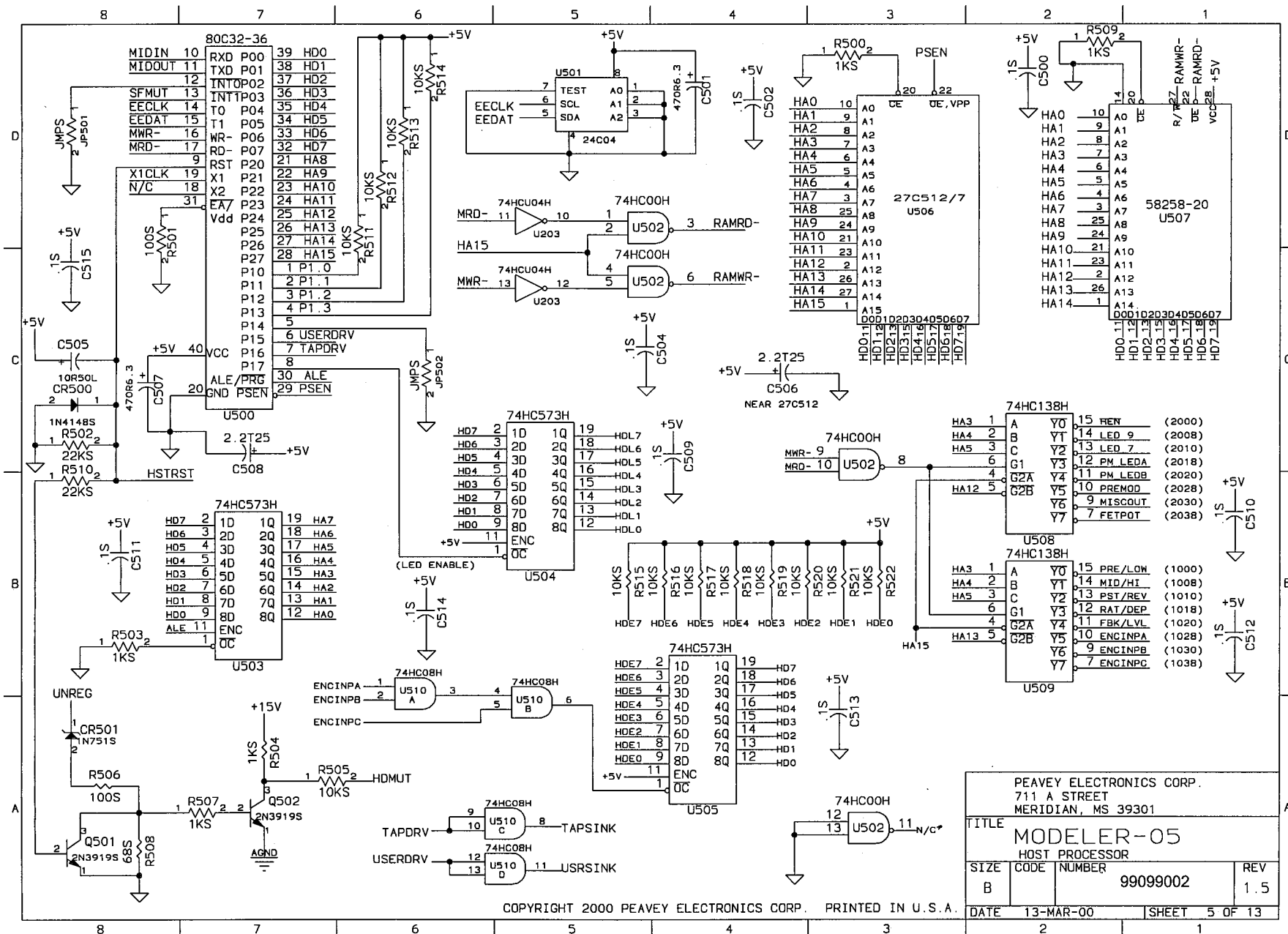
















BOARD NAME: TRANSFORMER 112 LED  
 PART DESCRIPTION AND  
 \*\* QTY. NAME VALUE NUMBER DEVICE DESIGNATIONS \*\*\*\*\*  
 \*\*\*\*\*

12 .IS .1 70300035 .IMF Z5U 50V 20% SMT 1206  
 C800, C801, C802, C900, C905, C906,  
 C907, C908, C2900, C4900, C6900, C8900  
 16 RLED8204 70418204 70418204 RED SMT LED, 2MM X 3MM  
 CR1001, CR1002, CR1003, CR1004, CR1005,  
 CR1006, CR1007, CR1008, CR1009, CR1101,  
 CR1102, CR1103, CR1104, CR1105, CR1106,  
 CR1107  
 4 GLED8204 70418213 70418213 GREEN SMT LED, 2MM X 3MM  
 CR1200, CR1201, CR1202, CR1203  
 4 RLED8204 70418204 70418204 RED SMT LED, 2MM X 3MM  
 CR1204, CR1205, CR1206, CR1207  
 4 GLED8204 70418213 70418213 GREEN SMT LED, 2MM X 3MM  
 CR1208, CR1209, CR1210, CR1211  
 4 RLED8204 70418204 70418204 RED SMT LED, 2MM X 3MM  
 CR1212, CR1213, CR1214, CR1215  
 1 GLED8204 70418213 70418213 GREEN SMT LED, 2MM X 3MM  
 CR1216  
 1 YLED8204 70418214 70418214 YELLOW SMT LED, 2MM X 3MM  
 CR1217  
 2 RLED8204 70418204 70418204 RED SMT LED, 2MM X 3MM  
 CR1218, CR1219  
 1 GLED8204 70418213 70418213 GREEN SMT LED, 2MM X 3MM  
 CR1220  
 1 RLED8204 70418204 70418204 RED SMT LED, 2MM X 3MM  
 CR1221  
 1 YLED8204 70418214 70418214 YELLOW SMT LED, 2MM X 3MM  
 CR1222  
 1 RLED8204 70418204 70418204 RED SMT LED, 2MM X 3MM  
 CR1223  
 2 YLED8204 70418214 70418214 YELLOW SMT LED, 2MM X 3MM  
 CR1224, CR1225  
 1 RLED8204 70418204 70418204 RED SMT LED, 2MM X 3MM  
 CR1226  
 1 GLED8204 70418213 70418213 GREEN SMT LED, 2MM X 3MM  
 CR1227  
 7 YLED8204 70418214 70418214 YELLOW SMT LED, 2MM X 3MM  
 CR1228, CR1229, CR1230, CR1231, CR1232,  
 CR1233, CR1234  
 9 GLED8204 70418213 70418213 GREEN SMT LED, 2MM X 3MM  
 CR2001, CR2002, CR2003, CR2004, CR2005,  
 CR2006, CR2007, CR2008, CR2009  
 7 RLED8204 70418204 70418204 RED SMT LED, 2MM X 3MM  
 CR2101, CR2102, CR2103, CR2104, CR2105,  
 CR2106, CR2107  
 9 GLED8204 70418213 70418213 GREEN SMT LED, 2MM X 3MM

CR3001, CR3002, CR3003, CR3004, CR3005,  
 CR3006, CR3007, CR3008, CR3009  
 7 RLED8204 70418204 70418204 RED SMT LED, 2MM X 3MM  
 CR3101, CR3102, CR3103, CR3104, CR3105,  
 CR3106, CR3107  
 9 GLED8204 70418213 70418213 GREEN SMT LED, 2MM X 3MM  
 CR4001, CR4002, CR4003, CR4004, CR4005,  
 CR4006, CR4007, CR4008, CR4009  
 16 RLED8204 70418204 70418204 RED SMT LED, 2MM X 3MM  
 CR4101, CR4102, CR4103, CR4104, CR4105,  
 CR4106, CR4107, CR5001, CR5002, CR5003,  
 CR5004, CR5005, CR5006, CR5007, CR5008,  
 CR5009  
 9 YLED8204 70418214 70418214 YELLOW SMT LED, 2MM X 3MM  
 CR6001, CR6002, CR6003, CR6004, CR6005,  
 CR6006, CR6007, CR6008, CR6009  
 2 ENC1212V ENC1212V BROWN 12MM REO122 ENCODER  
 EC800, EC801  
 10 ENC2425V ENC2425V FERA 16MM 24-PULSE VERTICAL ENCODER W/O  
 DETENTS  
 EC802, EC803, EC804, EC805, EC806,  
 EC807, EC808, EC809, EC810, EC811  
 4 CAB0107 70600112 70600112 4" 12 POS IDC CABLE ASSBY  
 J802, J803, J900, J902  
 24 47KS 47K 70200032 47K---1/8W--5%---SMT  
 R800, R801, R802, R803, R804, R805,  
 R806, R807, R808, R809, R810, R811,  
 R812, R813, R814, R815, R816, R817,  
 R818, R819, R820, R821, R822, R823  
 1 120S 120 70200048 120---1/8w--5%---SMT 1206  
 R1001  
 1 180S 180 70200015 180---1/8w--5%---smt  
 R1002  
 1 120S 120 70200048 120---1/8w--5%---SMT 1206  
 R1003  
 1 180S 180 70200015 180---1/8w--5%---smt  
 R1004  
 1 120S 120 70200048 120---1/8w--5%---SMT 1206  
 R1101  
 1 180S 180 70200015 180---1/8w--5%---smt  
 R1102  
 1 120S 120 70200048 120---1/8w--5%---SMT 1206  
 R1103  
 1 180S 180 70200015 180---1/8w--5%---smt  
 R1104  
 3 120S 120 70200048 120---1/8w--5%---SMT 1206  
 R1200, R1201, R1202  
 1 270S 270 70200017 270---1/8w--5%---smt  
 R1203  
 1 120S 120 70200048 120---1/8w--5%---SMT 1206  
 R1204

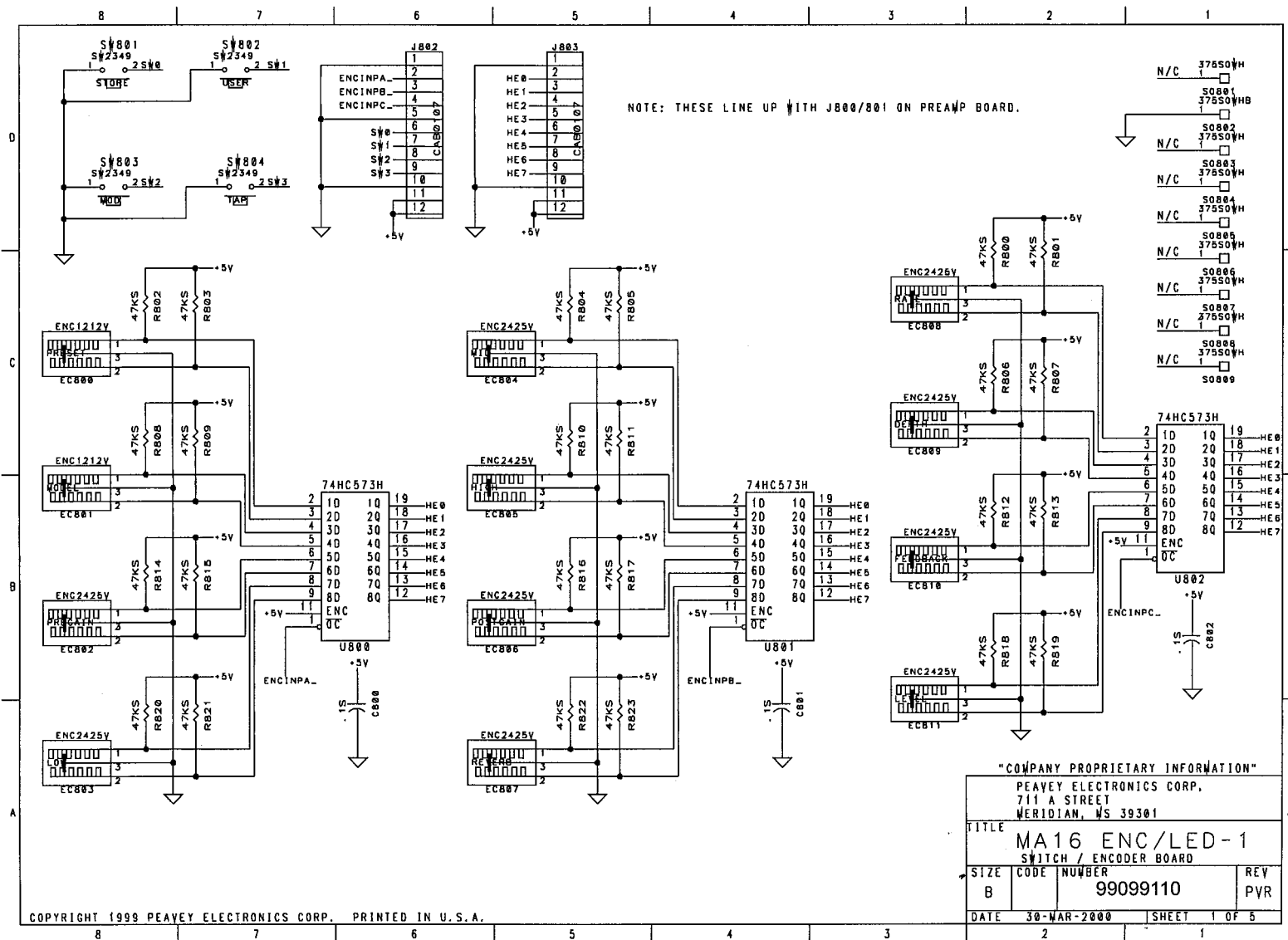
1 270S 270 70200017 270---1/8w--5%---smt  
 R1205  
 1 120S 120 70200048 120---1/8w--5%---SMT 1206  
 R2001  
 1 180S 180 70200015 180---1/8w--5%---smt  
 R2002  
 1 120S 120 70200048 120---1/8w--5%---SMT 1206  
 R2003  
 1 180S 180 70200015 180---1/8w--5%---smt  
 R2004  
 1 120S 120 70200048 120---1/8w--5%---SMT 1206  
 R2101  
 1 180S 180 70200015 180---1/8w--5%---smt  
 R2102  
 1 120S 120 70200048 120---1/8w--5%---SMT 1206  
 R2103  
 1 180S 180 70200015 180---1/8w--5%---smt  
 R2104  
 1 120S 120 70200048 120---1/8w--5%---SMT 1206  
 R3001  
 1 180S 180 70200015 180---1/8w--5%---smt  
 R3002  
 1 120S 120 70200048 120---1/8w--5%---SMT 1206  
 R3003  
 1 180S 180 70200015 180---1/8w--5%---smt  
 R3004  
 1 120S 120 70200048 120---1/8w--5%---SMT 1206  
 R3101  
 1 180S 180 70200015 180---1/8w--5%---smt  
 R3102  
 1 120S 120 70200048 120---1/8w--5%---SMT 1206  
 R3103  
 1 180S 180 70200015 180---1/8w--5%---smt  
 R3104  
 1 120S 120 70200048 120---1/8w--5%---SMT 1206  
 R4001  
 1 180S 180 70200015 180---1/8w--5%---smt  
 R4002  
 1 120S 120 70200048 120---1/8w--5%---SMT 1206  
 R4003  
 1 180S 180 70200015 180---1/8w--5%---smt  
 R4004  
 1 120S 120 70200048 120---1/8w--5%---SMT 1206  
 R4101  
 1 180S 180 70200015 180---1/8w--5%---smt

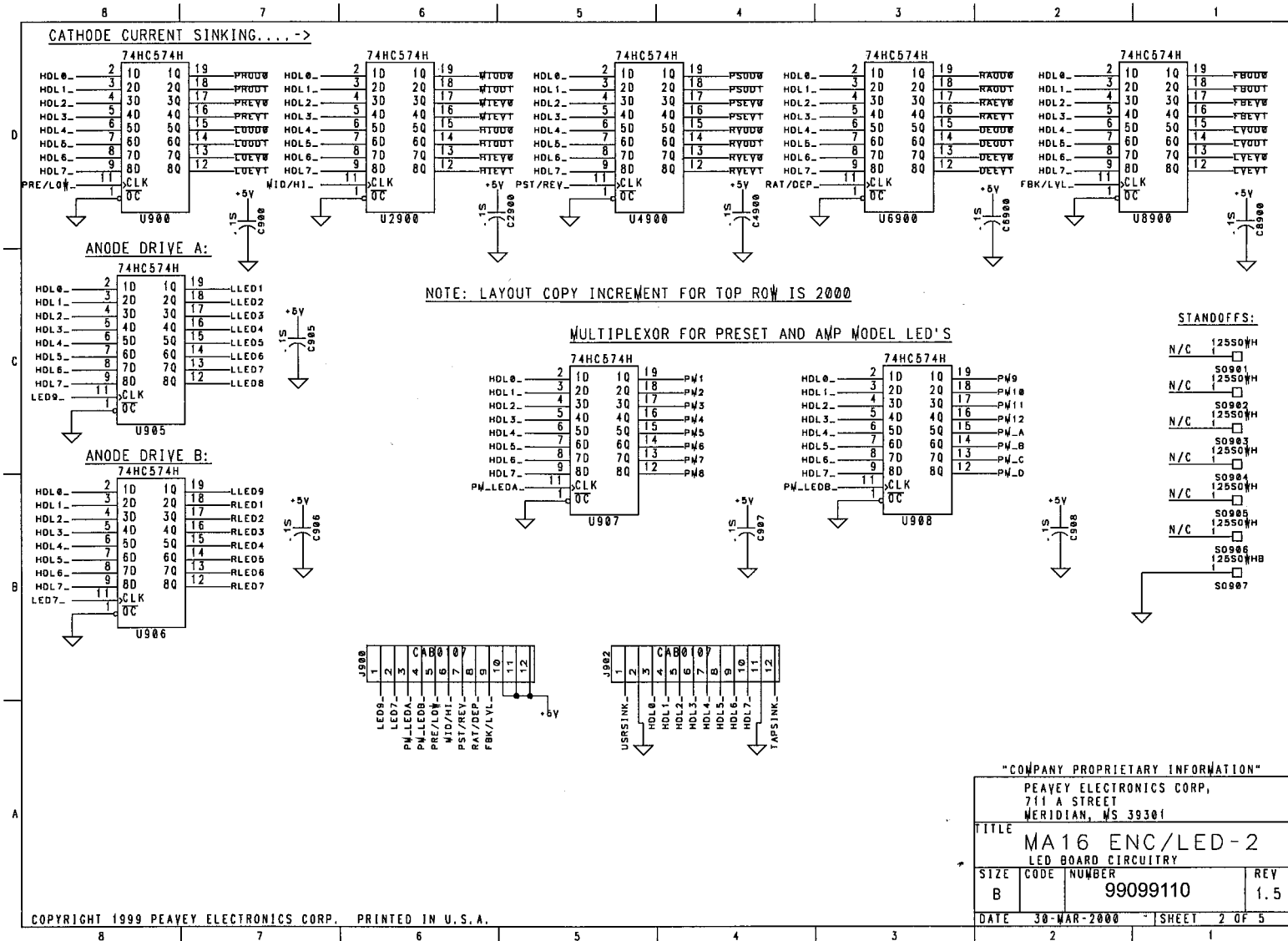
R4102  
1 120S 120 70200048 120---1/8w--5%---SMT 1206  
R4103  
1 180S 180 70200015 180---1/8w--5%---smt  
R4104  
1 120S 120 70200048 120---1/8w--5%---SMT 1206  
R5001  
1 180S 180 70200015 180---1/8w--5%---smt  
R5002  
1 120S 120 70200048 120---1/8w--5%---SMT 1206  
R5003  
1 180S 180 70200015 180---1/8w--5%---smt  
R5004  
1 120S 120 70200048 120---1/8w--5%---SMT 1206  
R6001  
1 180S 180 70200015 180---1/8w--5%---smt  
R6002  
1 120S 120 70200048 120---1/8w--5%---SMT 1206  
R6003  
1 180S 180 70200015 180---1/8w--5%---smt  
R6004  
-1 375SOWH 70900782 70900782 SPCR,R,C?X3/8,SW,AL,ST  
SO801  
1 375SOWHB 70901893 70901893 .375 X .250 HOLLOW SWAGE SPACER - BRASS  
SO802  
5 375SOWH 70900782 70900782 SPCR,R,C?X3/8,SW,AL,ST  
SO803, SO805, SO807,  
SO808, SO809  
4 125SOWH 70901836 70901836 SPCR, 1/8,(#4)NON-THREADED KNURLED, .187  
SWAGE A  
SO901, SO902, SO904, SO906  
1 125SOWHB 70901892 70901892 .125 X .250 HOLLOW SWAGE SPACER - BRASS  
SO907  
4 SW2349 SW2349 71322349 SWITCH, SPST MOM. PUSH  
SW801, SW802, SW803, SW804  
3 74HC573H 74HC573 70418041 74HC573 (SOL20) SMT  
U800, U801, U802  
9 74HC574H 74HC574 70418024 74HC574 (SOL-20) SMT  
U900, U905, U906, U907, U908, U2900,  
U4900, U6900, U8900

\*\*\*\*\*

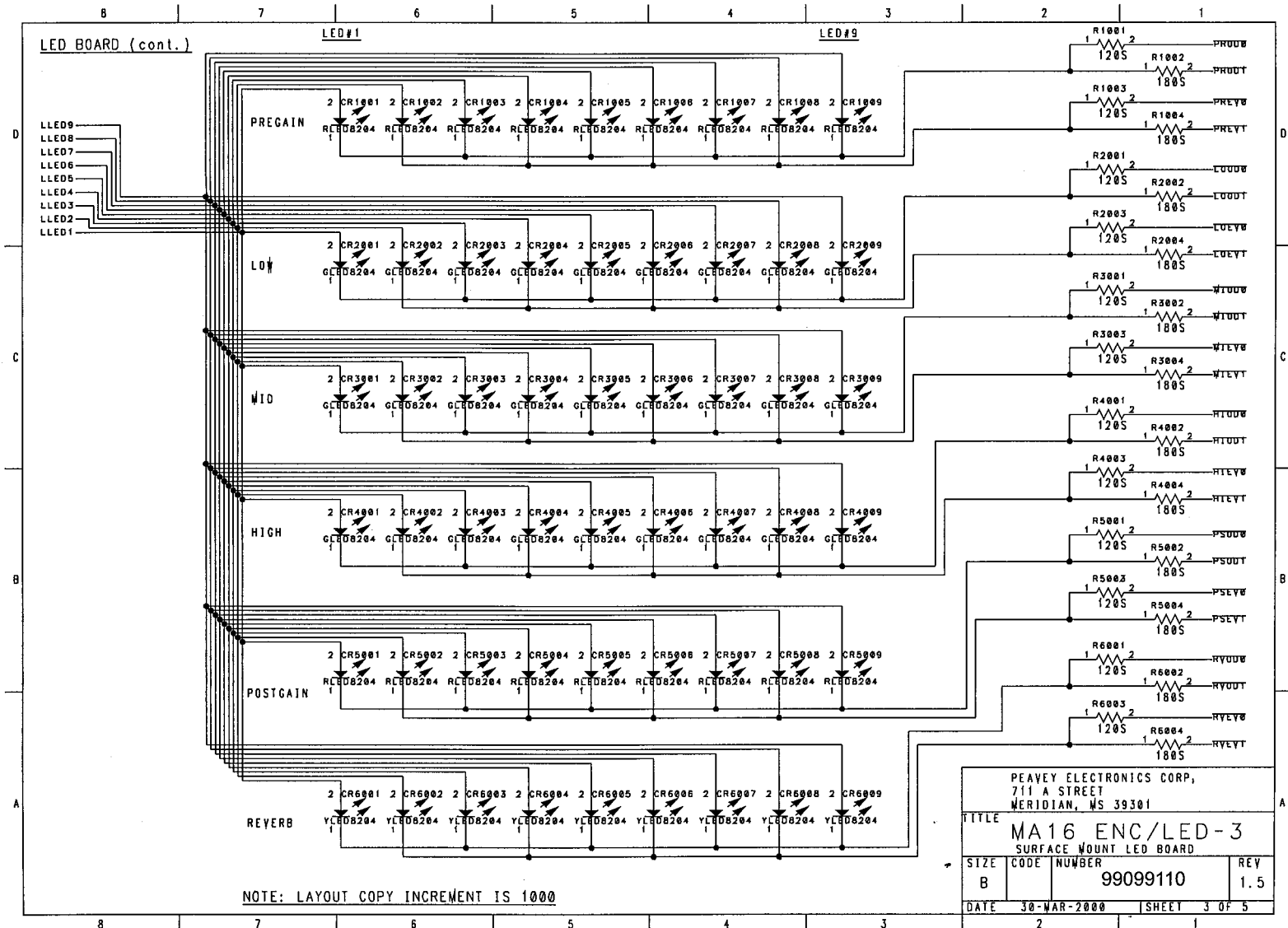


Transformer Led







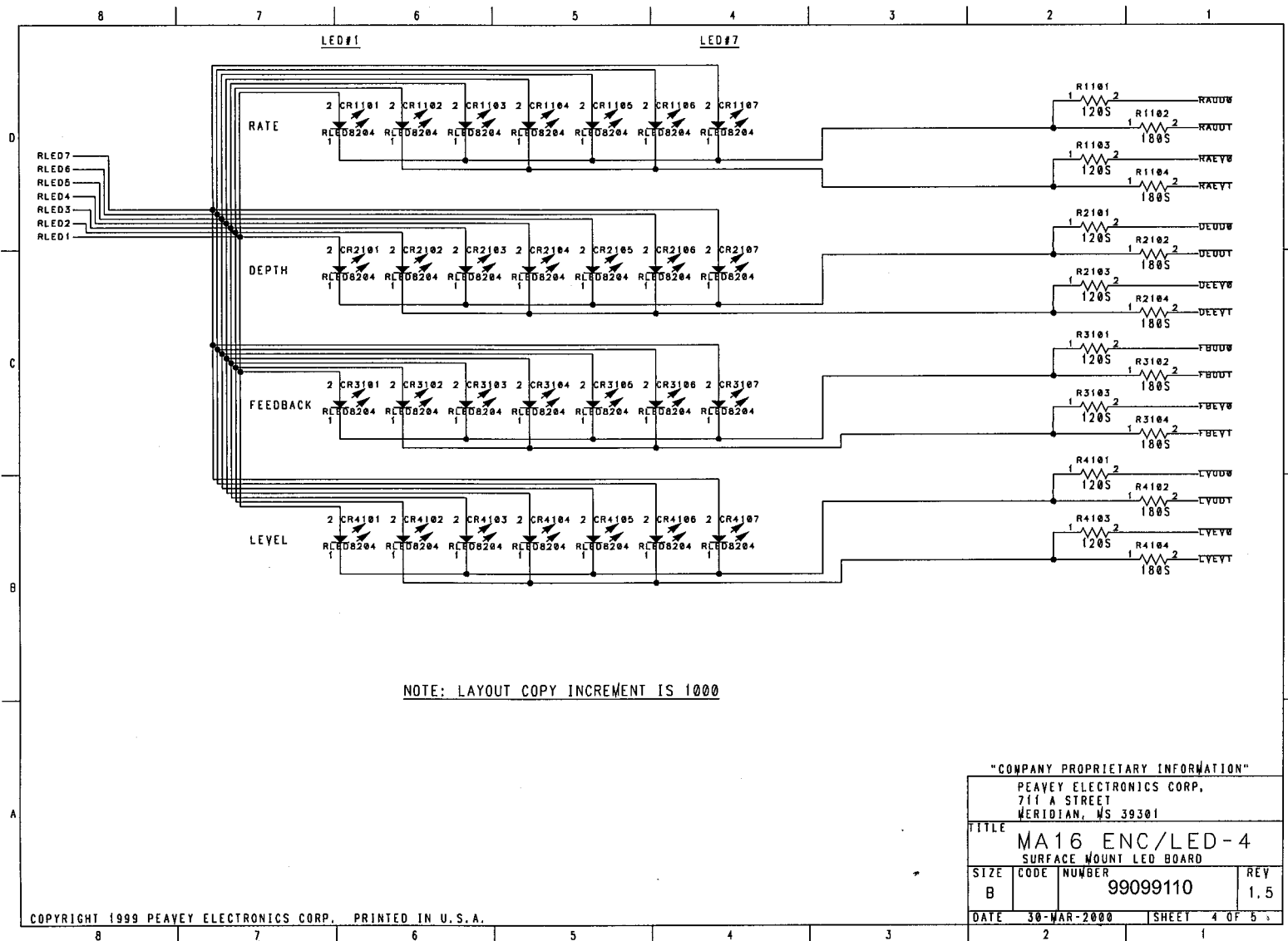


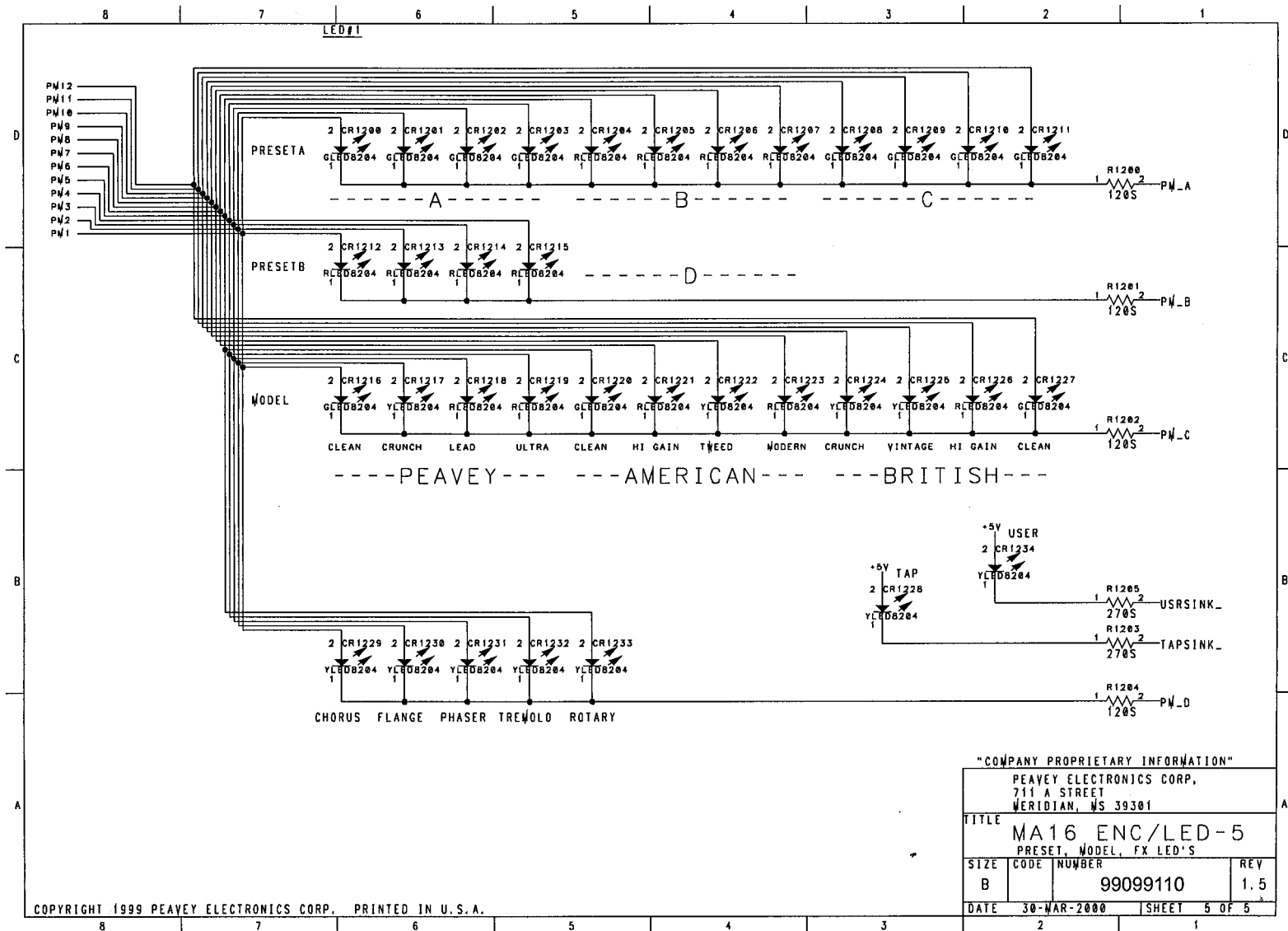
PEAVEY ELECTRONICS CORP,  
711 A STREET  
MERIDIAN, MS 39301

TITLE  
MA16 ENC/LED-3  
SURFACE MOUNT LED BOARD

|      |      |          |     |
|------|------|----------|-----|
| SIZE | CODE | NUMBER   | REV |
| B    |      | 99099110 | 1.5 |

DATE 30-MAR-2000 SHEET 3 OF 5





# BILL OF MATERIALS REPORT

BOARD NAME: TR212PWR REPORT DATE: 17OCT00  
 ASSEMBLY LEVEL NUMBER: 99053140 DESIGNER: JAMES HUGHES  
 PROJECT NUMBER: P0000032

CBDs  
 PART PART DESCRIPTION AND  
 \*\* QTY. NAME VALUE NUMBER DEVICE DESIGNATIONS \*\*\*\*\*  
 \*\*\*\*\*

1 72100614 72100614 72100614 PCB  
 5 .001M .001M 70330156 .001MF-5%-50VDC-MY-T&A  
 C25, C26, C27, C35, C36  
 6 .0068 .0068 70340008 .0068MF-10%-----50VDC---MON---T&R  
 C156, C159, C160, C256, C259, C260  
 4 .018M .018M 70330126 .018M 5% 50vdc my T&A  
 C163, C164, C263, C264  
 4 .01CD .01CD 70320248 .01MF---20%---1000VDC---CD---T&A  
 C28, C29, C30, C37  
 6 .022 .022 70340012 .022MF---10%---50VDC---MON---T&R  
 C107, C124, C168, C207, C224, C268  
 2 .047 .047 70340017 .047MF---10%---50VDC---MON---T&R  
 C106, C206  
 2 .047M .047M 70330136 .047M 5% 50vdc my T&A  
 C119, C219  
 2 .068M .068M 70330124 .068M 5% 50vdc my T&A  
 C179, C279  
 10 .1 .1 70340100 .1MF---80-20%---50VDC---AXL---T&R  
 C101, C102, C111, C114, C173, C174,  
 C201, C202, C211, C214  
 2 .12M .12M 70330133 .12M 5% 50vdc my T&A  
 C158, C258  
 8 .1P10 .1P10 70340101 .1MF---10%---50VDC---MON---T&R  
 C104, C109, C115, C154, C204, C209,  
 C215, C254  
 4 .1SF .1SF 70330113 0.10 MFD 10% 100V STCK FILM T&A  
 C175, C176, C177, C178

2 .1W5 .1W5 70250038 .1---5W-10%-WW-AXL  
 R139, R239  
 2 .22SF2 .22SF2 70330114 0.22 MF 5% 100V STCK FILM t&a  
 C113, C213  
 12 .47SF63 .47SF63 70330159 .047 MF 63V STACK FILM T&A  
 C141, C147, C157, C165, C166, C172,  
 C241, C247, C257, C265, C266, C272  
 4 1.3K 1.3K 70240061 1.3K--1/4W--5%---CF--T&R  
 R147, R162, R247, R262  
 2 1.82KP1 1.82KP1 70241078 1.82K-1/4W--1%---CF--T&R  
 R161, R261  
 18 1000R35 1000R35 70320186 1000MF---20%---35VDC---EL---T&A  
 C31, C32, C33, C34, C38, C39, C40, C46,  
 C48, C49, C50, C52, C56, C57, C58, C59,  
 C60, C61  
 20 100K 100K 70240034 100K--1/4W--5%---CF--T&R  
 R105, R107, R109, R110, R112, R117,  
 R118, R125, R129, R135, R205, R207,  
 R209, R210, R212, R217, R218, R225,  
 R229, R235  
 6 100PF 100PF 70340054 100PF---10%---50VDC---T/C---T&R  
 C108, C153, C155, C208, C253, C255  
 13 10K 10K 70240025 10K---1/4W--5%---CF--T&R  
 R120, R126, R130, R143, R146, R149,  
 R157, R220, R226, R230, R243, R246, R249  
 2 12K 12K 70240057 12K---1/4W--5%---CF--T&R  
 R159, R259  
 2 15K 15K 70240027 15K---1/4W--5%---CF--T&R  
 R140, R240  
 4 1K 1K 70240017 1K---1/4W--5%---CF--T&R  
 R132, R138, R232, R238  
 2 1M 1M 70240039 1M---1/4W--5%---CF--T&R  
 R134, R234  
 8 1N4003 1N4003 70464003 1N4003 200V SILICON DIODE  
 CR3, CR4, CR20, CR21, CR22, CR23, CR25,

CR28  
 40 1N4148 4148 70464148 1N4148 75V 10MA SILICON DIODE  
 CR1, CR2, CR101, CR102, CR103, CR104,  
 CR105, CR106, CR107, CR108, CR109,  
 CR110, CR111, CR112, CR113, CR114,  
 CR116, CR118, CR119, CR130, CR133,  
 CR201, CR202, CR203, CR204, CR205,  
 CR206, CR207, CR208, CR209, CR210,  
 CR211, CR212, CR213, CR214, CR216,  
 CR218, CR219, CR230, CR233  
 2 1N4744 4744 70440102 SZG40102 15V 5% ZENER DIODE  
 CR27, CR29  
 6 2.2K 2.2K 70240020 2.2K--1/4W--5%---CF--T&R  
 R136, R142, R170, R236, R242, R270  
 2 2.4K 2.4K 70240062 2.4K--1/4W--5%---CF--T&R  
 R176, R276  
 5 2.7K 2.7K 70240021 2.7K--1/4W--5%---CF--T&R  
 R49, R121, R144, R221, R244  
 2 220R50 220R50 70320187 220MF---20%---50VDC---EL---T&A  
 C122, C222  
 12 22K 22K 70240029 22K---1/4W--5%---CF--T&R  
 R104, R111, R124, R127, R152, R153,  
 R154, R156, R204, R211, R224, R227  
 11 22R50 22R50 70320181 22MF---20%---50VDC---EL---T&A  
 C43, C45, C51, C117, C120, C123, C171,  
 C217, C220, C223, C271  
 2 25.5KP1 25.5KP1 70240121 25.5K 1% 1/4W MFT&R  
 R173, R273  
 4 3.3K 3.3K 70240022 3.3K--1/4W--5%---CF--T&R  
 R150, R151, R250, R251  
 8 39PF 39PF 70340052 39PF-----50VDC---T/C---T&R  
 C103, C110, C116, C121, C203, C210,  
 C216, C221  
 17 4.7K 4.7K 70240023 4.7K--1/4W--5%---CF--T&R  
 R101, R108, R115, R116, R122, R137,  
 R158, R171, R172, R201, R208, R215,  
 R216, R222, R237, R271, R272

2 4.7W1 4.7W1 70210015 4.7---1W---5%----MO--T&R

R123, R223

4 437STW 70901891 70901891 SPCR, 437(#4),.187 SW,AL

STO1, STO2, STO3, STO4

9 4560 4560 70414560 4560 DUAL OP AMP IC

U101, U102, U201, U202, U207, U208,  
U209, U210, U211

6 470 470 70240015 470---1/4W--5%----CF--T&R

R155, R160, R163, R255, R260, R263

1 47FP 47FP 70240090 47FP--1/4W--5%----FP--T&R

R48

10 47K 47K 70240031 47K---1/4W--5%----CF--T&R

R106, R113, R114, R119, R141, R206,  
R213, R214, R219, R241

4 47W1 47W1 70210011 47---1W---5%----MO--T&R

R166, R167, R266, R267

2 4PRC4J2 4PRC4J2 70600034 4C PRE-TIN .100 CTR 4" JUMPER (SPLIT VERSION)

P1, P2

1 500SOWH 70900780 70900780 SPCR,1/2,R(HW),.187SW,AL

STO6

2 51.1KP1 51.1KP1 70240045 51.1K-1/4W--1%----MF--T&R

R175, R275

4 6.8K 6.8K 70240024 6.8K--1/4W--5%----CF--T&R

R145, R148, R245, R248

2 68K 68K 70240032 68K---1/4W--5%----CF--T&R

R131, R231

2 698P1 698P1 70240086 698 OHM 1% 1/4W MF T&R

R174, R274

1 7815FVRT 7815FVRT 70400318 7815 15V 1A POS TO-220 RG VERT MNT INS

Q1

1 7915FVRT 7915FVRT 70400319 7915 15V 1A NEG TO 220 RG VERT MNT INS

Q2

2 8PRC4J2 8PRC4J2 70600033 8C PRE-TIN .100 CTR 4" JUMPER (SPLIT VERSION)

P9, P10

1 937SOW 70900786 70900786 SPACER, 15/16,R(#4),.187 SWAGE ALUM.

STO5

1 CAB072 CAB072 70600072 8C .1" VERT RIBBON CABLE ASSY 4"

P16

2 CLP1183 CLP1183 70901183 FUSECLIP, PC MT - T&A

FH3, FH4

2 DG211 DG211 70420211 DG211 CJ I.C.

U104, U204

1 DIN5PC 71466140 71466140 CONN 5P/180 DEG. R/A PCMNT DIN

J7

1 DIN8 71466147 71466147 CONN 8 POSITION R/A PCMNT DIN

J6

3 FMPU 73711811 73711811 M118-171 C.B. FEMALE MOLEX PIN

J17, J21, J25

2 J174 J174 70460174 J-174 30V TO-92 P-CHAN FET T&A

Q100, Q200

1 KBUEJ 70400605 70400605 6A, 600V, INLINE DIODE BRIDGE RECTIFIER

BR100

4 LBRKT1 71500238 71500238 #74 L-BRACKET W/4-40 HOLE

BR1, BR2, BR3, BR4

2 LM3886 LM3886 70403886 68W AUDIO POWER AMP W/MUTE

U103, U203

2 MMPU 73711812 73711812 R93-12 PN C.B. MALE MOLEX PIN

J24, J26

1 POT0539 71190539 71190539 50KL DUAL MIN VPC W/BRKT

VR1

1 POT0543 71190543 71190543 10KAX2/10KCX2 MIN VPC W/BRKT

VR2

6 RAMN6322 71466322 71466322 JACK MONO R/A 1/4" 6.5MM NINS

J1, J2, J3, J4, J8, J11

1 RAS16122 RAS16122 71466122 S-G4116 INS. STEREO W/ ISOLATED SW.

J5

1 SPX12 SPX12 XXXXXXXX 12 EACH OF STAKE PINS

J10

1 SPX8 SPX8 XXXXXXXX 8 EACH OF STAKE PINS

J9

1 TCONN8 73716721 73716721 8C-WTB-HDR-SHRD-.098"-TIN

P15

1 WJ8BL12 WJ8BL12 91014127 BL-18G-12"-CPT-205SPD

P7

1 WJ8BL7SP WJ8BL7SP 91014074 BL-18G-7"-S205-WJ18

P5

1 WJ8YL12 WJ8YL12 91015128 YL-18G-12"-CPT-205SPD

P8

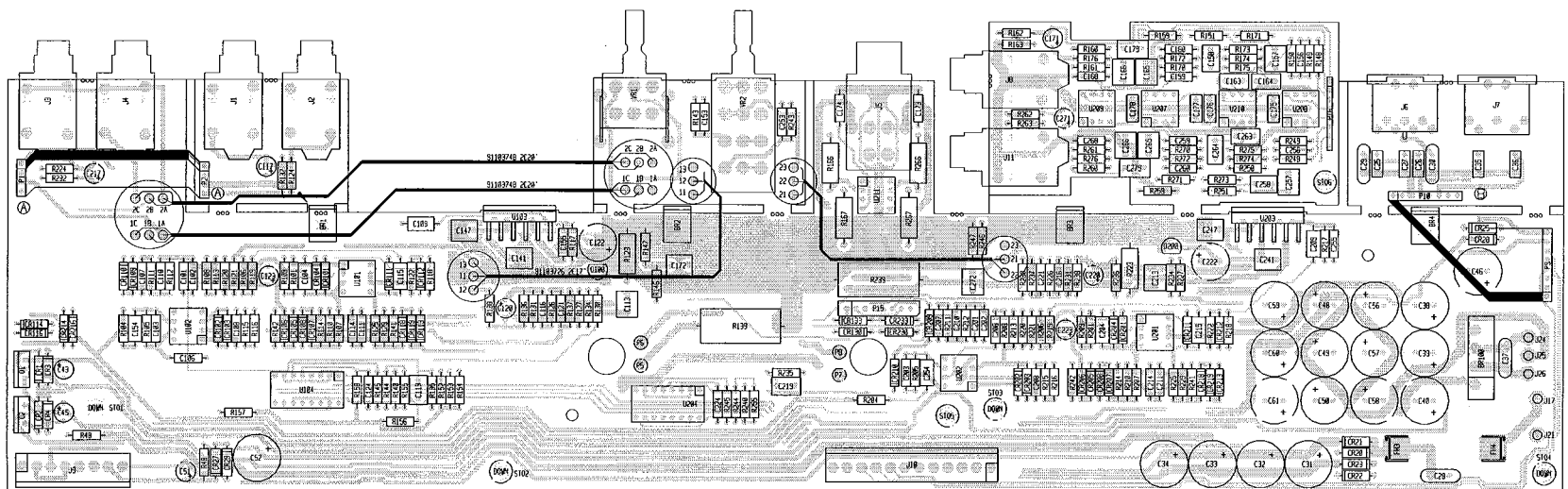
1 WJ8YL7SP WJ8YL7SP 91015078 Y-18G-7"-S205--WJ18

P6

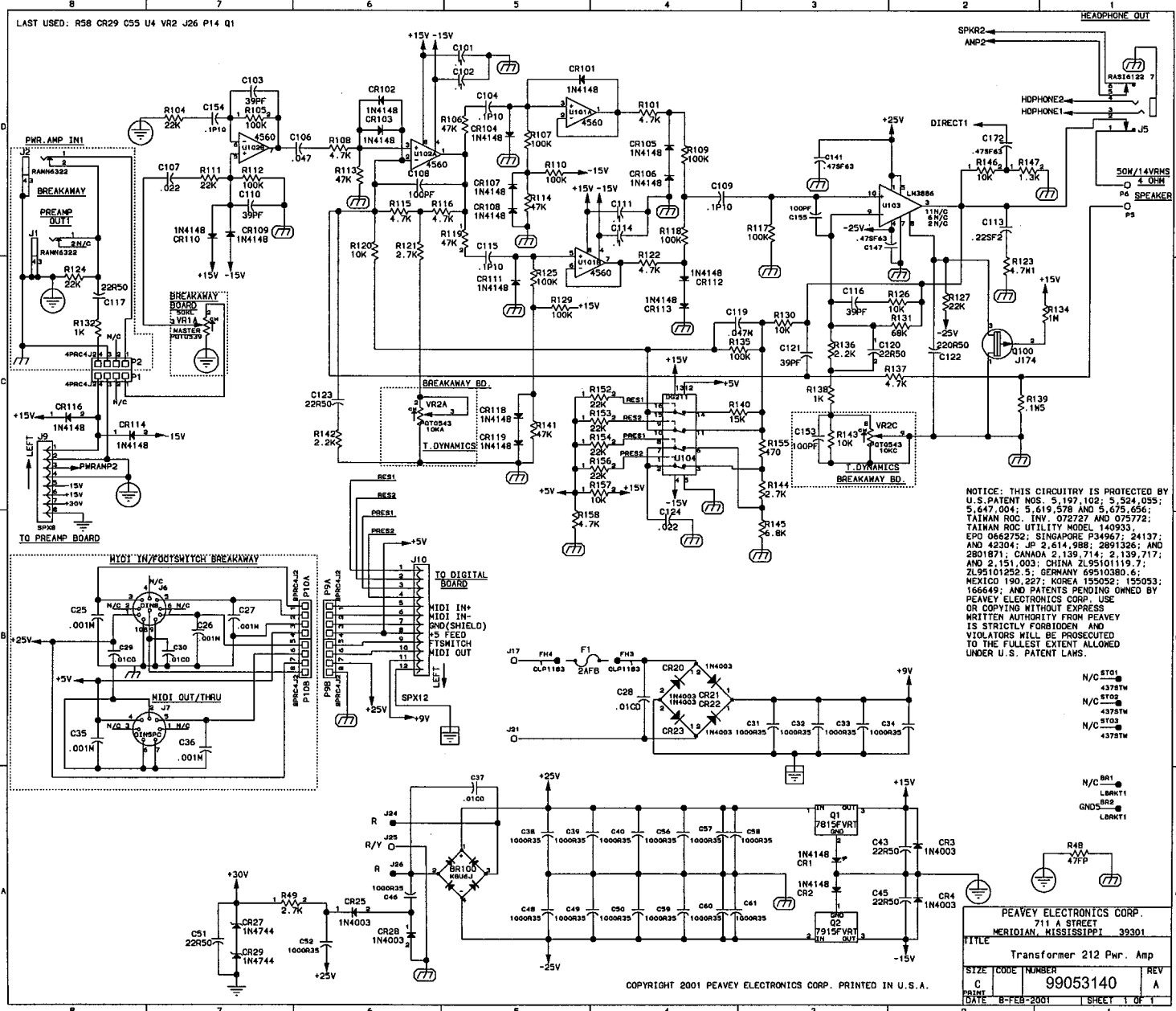
\*\*\*\*\*

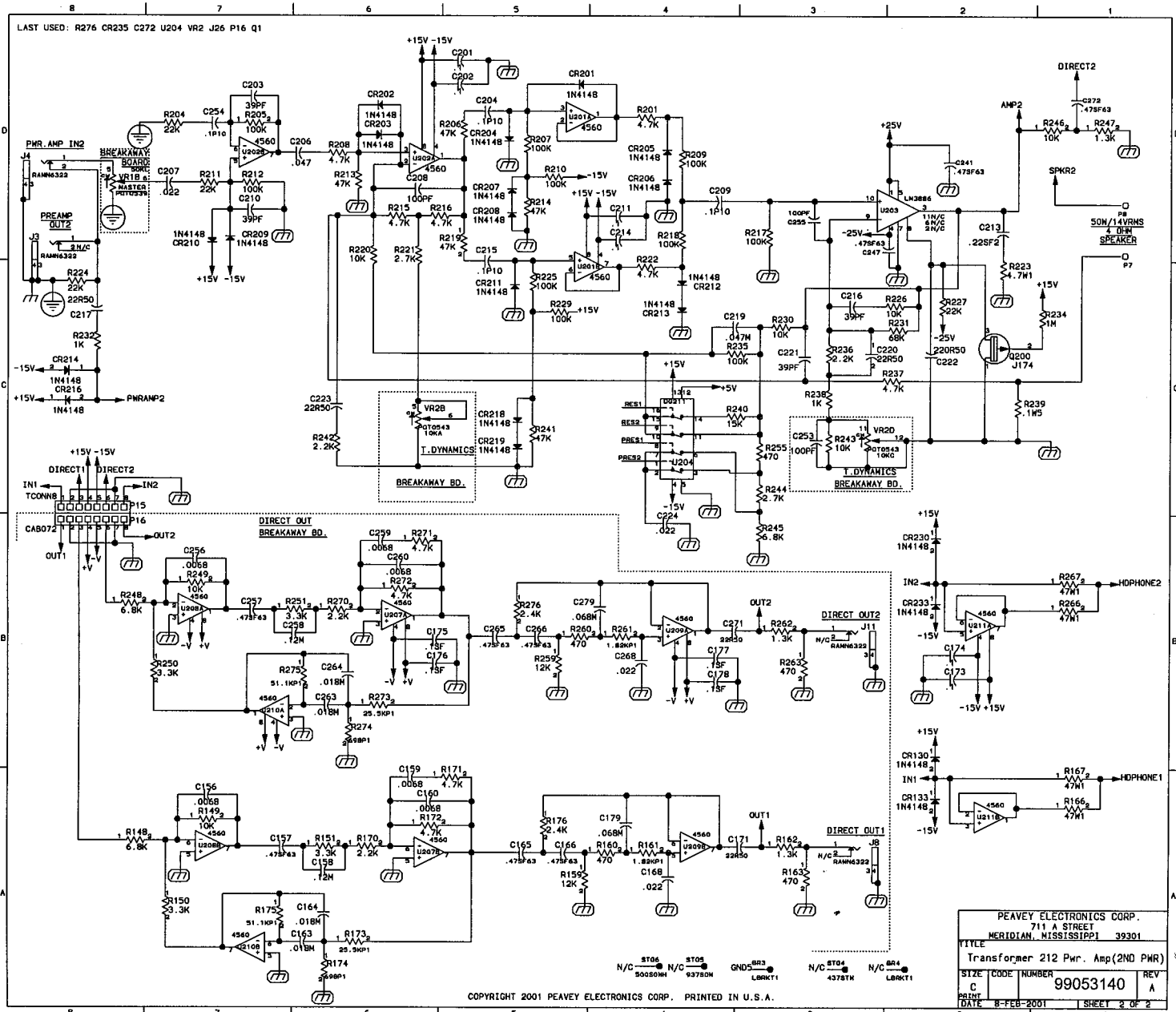
\* END OF BILL OF MATERIALS REPORT \*

\*\*\*\*\*



transformer 212 power







BILL OF MATERIALS REPORT

BOARD NAME: TTPRIMARY REPORT DATE: 24NOV99  
ASSEMBLY LEVEL NUMBER: 99053030 DESIGNER: TIM TAYLOR/JAMES  
HUGHES PROJECT NUMBER: P9800153

CBDS  
PART PART DESCRIPTION AND  
\*\* QTY. NAME VALUE NUMBER DEVICE DESIGNATIONS \*\*\*\*\*  
\*\*\*\*\*

1 98853030 98853030 98853030 PCB

1 .01DVLNP .01DVLNP 70320104 .01 MFD 125VDC DVL MYLAR +0-20%

C2

1 .1X2 70320298 70320298 .1MF 250VAC X2 20%

C1

1 15MMSOB 70901889 70901889 SPACER, 15MM, .187 BRASS

STO2

1 15MSOW 70901837 70901837 SPACER, 15mm-r(#4) .187 swage alum.

STO1

1 CL30 CL30 70240202 INRUSH CURRENT LIMITER

R1

2 CLP1183 CLP1183 70901183 FUSECLIP, PC MT - T&A

FC1, FC2

2 JMP JMP 70600005 22 GA. JUMPER WIRE T&R

JP1, JP2

4 SPD 73716194 73716194 .250 PC MNT SPADE .093 PCB

P1, P2, P3, P4

3 SPX1U SPX1U 73717003 1 STAKE PIN

P5, P6, P7

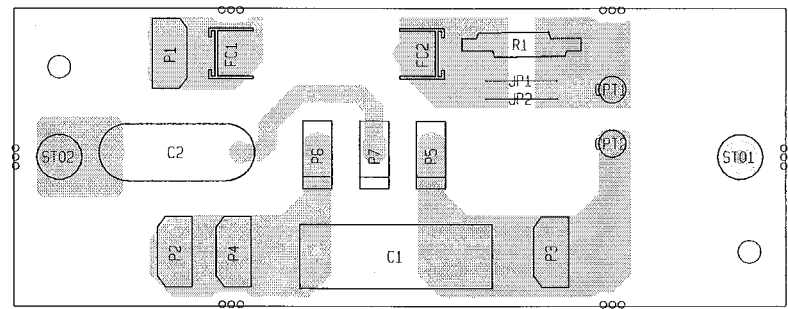
2 WJ8BK6SI WJ8BK6SI 91090305 BK-18G-6"-CPT-SI187

CPT1, CPT2

\*\*\*\*\*  
\* END OF BILL OF MATERIALS REPORT \*  
\*\*\*\*\*

|                                    |
|------------------------------------|
| PARTS NOT PLACED<br>IN<br>99053030 |
| R1                                 |

|                                    |
|------------------------------------|
| PARTS NOT PLACED<br>IN<br>99053031 |
| C2. R1<br>P5. P6. P7               |

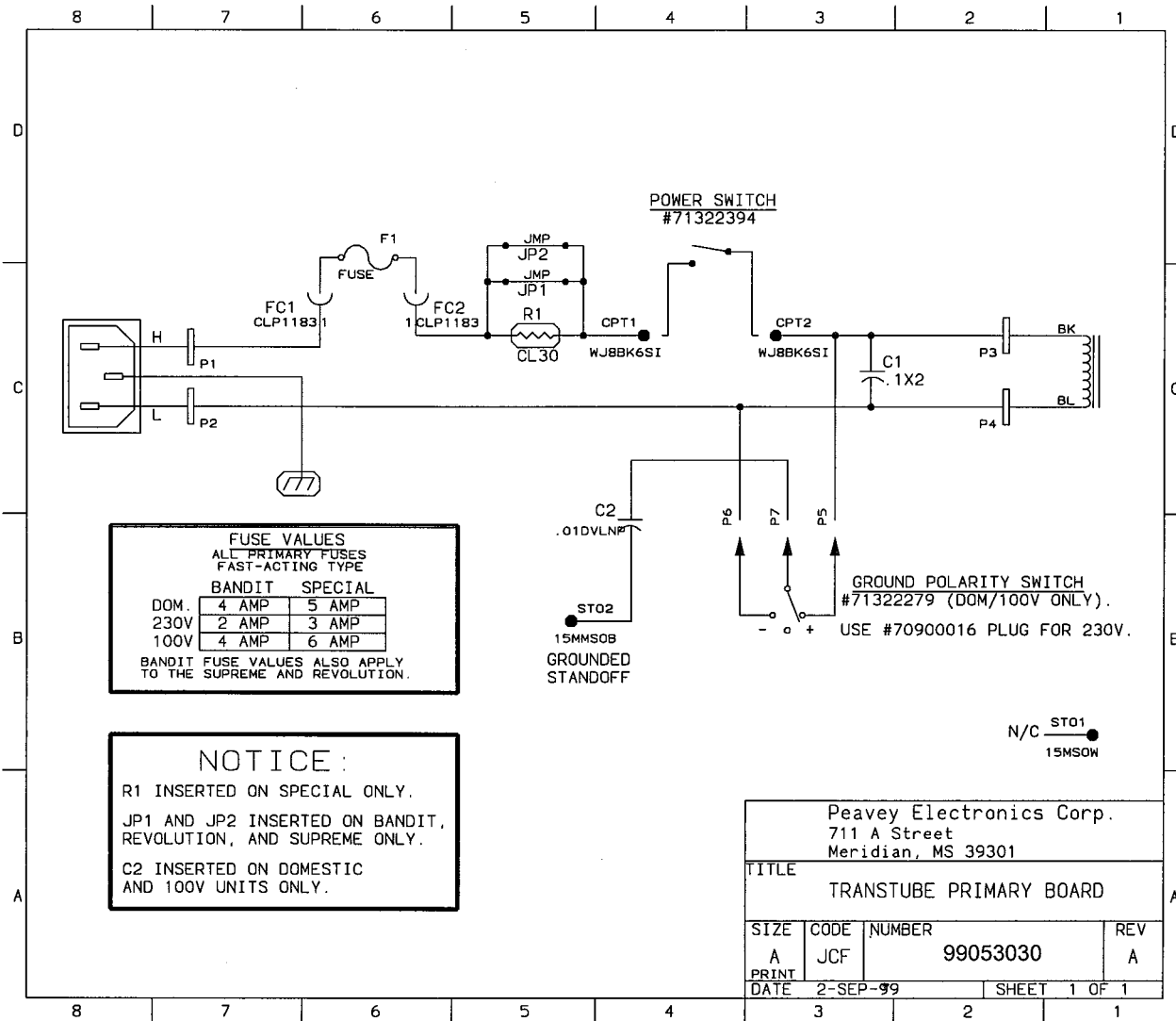


TRANSTUBE PRIMARY

|                                    |
|------------------------------------|
| PARTS NOT PLACED<br>IN<br>99053032 |
| JP1. JP2                           |

|                                    |
|------------------------------------|
| PARTS NOT PLACED<br>IN<br>99053033 |
| C2. JP1. JP2<br>P5. P6. P7         |

| ASS'Y P/N                 |          |
|---------------------------|----------|
| BANDIT / REV DOM. PRIMARY | 99053030 |
| BANDIT / REV EXP. PRIMARY | 99053031 |
| SPECIAL DOM. PRIMARY      | 99053032 |
| SPECIAL EXP. PRIMARY      | 99053033 |



BILL OF MATERIALS REPORT

BOARD NAME: TTPRIMARY REPORT DATE: 24NOV99

ASSEMBLY LEVEL NUMBER: 99053030 DESIGNER: TIM TAYLOR/JAMES  
HUGHES PROJECT NUMBER: P9800153

CBDS  
PART PART DESCRIPTION AND

\*\* QTY. NAME VALUE NUMBER DEVICE DESIGNATIONS \*\*\*\*\*

1 98853030 98853030 98853030 PCB

1 .01DVLNP .01DVLNP 70320104 .01 MFD 125VDC DVL MYLAR +0-20%

C2

1 .1X2 70320298 70320298 .1MF 250VAC X2 20%

C1

1 15MMSOB 70901889 70901889 SPACER, 15MM, .187 BRASS

STO2

1 15MSOW 70901837 70901837 SPACER, 15mm-r(#4) .187 swage alum.

STO1

1 CL30 CL30 70240202 INRUSH CURRENT LIMITER

R1

2 CLP1183 CLP1183 70901183 FUSECLIP, PC MT - T&A

FC1, FC2

2 JMP JMP 70600005 22 GA. JUMPER WIRE T&R

JP1, JP2

4 SPD 73716194 73716194 .250 PC MNT SPADE .093 PCB

P1, P2, P3, P4

3 SPX1U SPX1U 73717003 1 STAKE PIN

P5, P6, P7

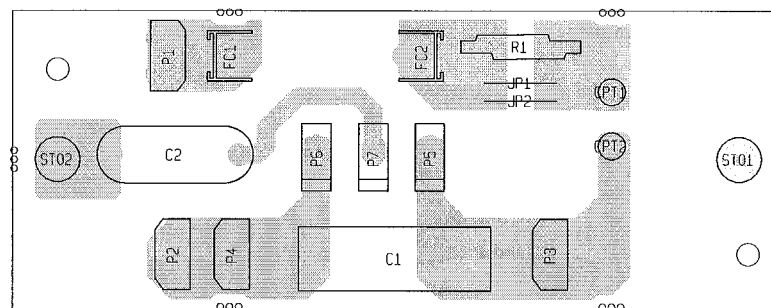
2 WJ8BK6SI WJ8BK6SI 91090305 BK-18G-6"-CPT-SI187

CPT1, CPT2

\*\*\*\*\*  
\* END OF BILL OF MATERIALS REPORT \*  
\*\*\*\*\*

|                                    |
|------------------------------------|
| PARTS NOT PLACED<br>IN<br>99053030 |
| R1                                 |

|                                    |
|------------------------------------|
| PARTS NOT PLACED<br>IN<br>99053031 |
| C2. R1<br>P5. P6. P7               |



TRANSTUBE PRIMARY

|                                    |
|------------------------------------|
| PARTS NOT PLACED<br>IN<br>99053032 |
| JP1. JP2                           |

|                                    |
|------------------------------------|
| PARTS NOT PLACED<br>IN<br>99053033 |
| C2. JP1. JP2<br>P5. P6. P7         |

| ASS'Y P/N                 |          |
|---------------------------|----------|
| BANDIT / REV DOM. PRIMARY | 99053030 |
| BANDIT / REV EXP. PRIMARY | 99053031 |
| SPECIAL DOM. PRIMARY      | 99053032 |
| SPECIAL EXP. PRIMARY      | 99053033 |

