

NOTES

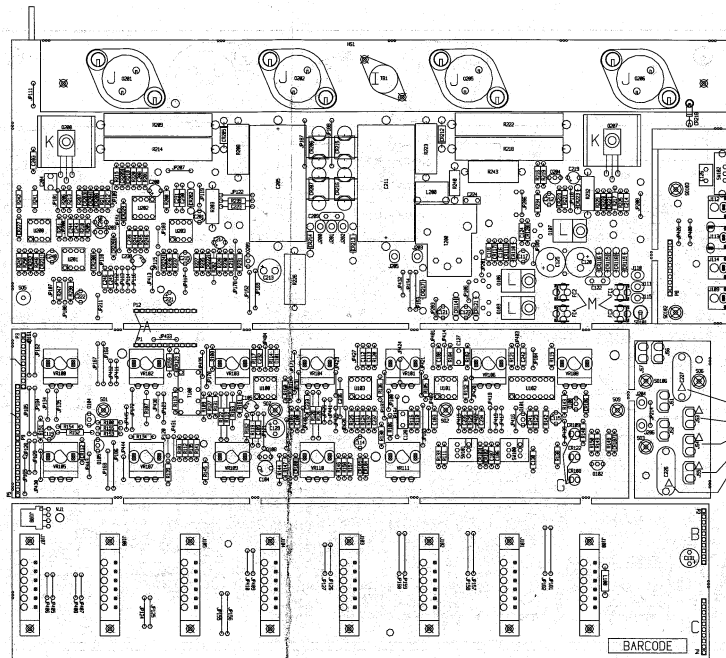
(for B75T AND B150T (DOMESTICS AND EXPORTS))
 Do not insert the following parts:
 JP205, JP202, JP204, C220, C202, R233 & R204
 For R232 & R203 insert 2.7KΩ P/N 70210016

(for B150T-DOMESTIC ONLY)
 Insert Current Limiter P/N 70240200 (CL-50) into
 Molex Pins J204 & J205
 Do not insert JP214

(for B75T-DOMESTICS & EXPORTS)
 Do not insert the following parts:
 Q205, Q201, R222, R203, J204, J205, R207, R210, C206, C212,
 R221 & R225
 For the following parts, insert the value specified:
 For R226 insert 250Ω P/N 70250002
 For R211 & R219 insert 27Ω P/N 70240013
 For R200 & R236 insert 1.21KΩ P/N 70240046
 For R201 & R235 insert 22K P/N 70240029

Use values for these parts as specified on the pcb area for
 B150T Dom. & Exp.

I { For B75T (99090737) use:
 Thermal Breaker P/N 70301129
 For B150T (99090730) use:
 Thermal Breaker P/N 70300633

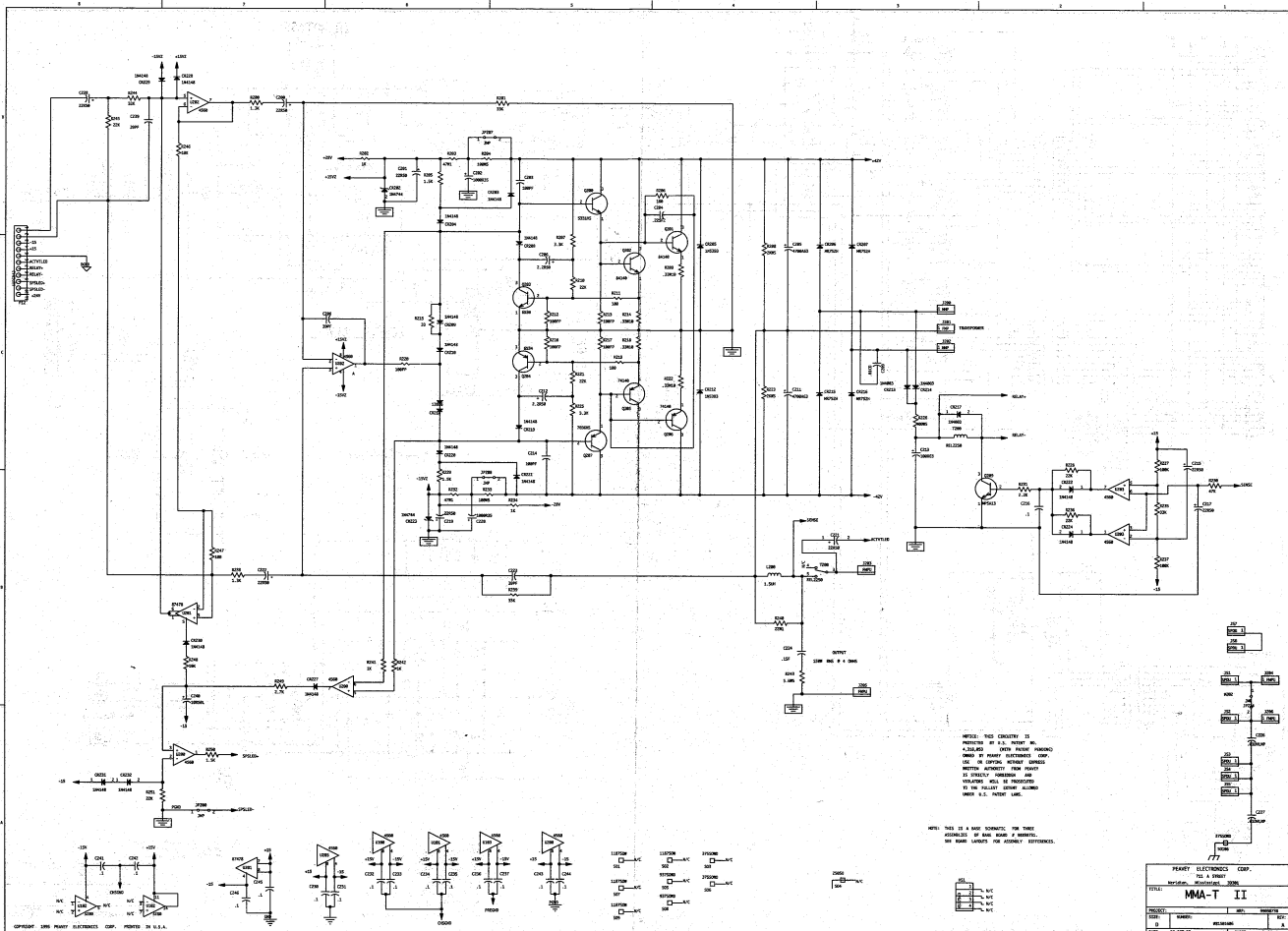


DO NOT INSERT these parts for:
 MMA B75T II EXPORT (99090733) AND
 MMA B150T II EXPORT (99090680)

Information shown applies to both the B75 & B150T II
 (DOMESTICS & EXPORTS) UNLESS specified otherwise

| Version | P/N |
|--------------|----------|
| MMA-B75T II | 99090737 |
| B75T Export | 99090739 |
| MMA-B150T II | 99090730 |
| B150T Export | 99090680 |

| | | | | | | | | | | | | | | |
|---|---------|---------|----------|----------------------|---|----------|----------|----------|--------------------------------------|---|---------|----------|------------|--------------------------|
| 1 | 1K | 1K | 70240017 | 1K-1/4W-5%-CP-T&R | 1 | 100K | 100K | 70240034 | 100K-1/4W-5%-CP-T&R | 3 | POT0703 | 71190703 | 71190703 | 10KA 120M RDC ROTARY POT |
| 2 | 22 | 22 | 70240007 | 22-1/4W-5%-CP-T&R | 1 | 22K | 22K | 70240029 | R227 | | | | | VR109, VR110, VR111 |
| 1 | 6.8K | 6.8K | 70240024 | 6.8K-1/4W-5%-CP-T&R | 1 | 1.5K | 1.5K | 70240010 | 22K-1/4W-5%-CP-T&R | 1 | WUX | WUX | XXXXXXXXXX | XXXXXXXXXX |
| 1 | 10K | 10K | 70240025 | 10K-1/4W-5%-CP-T&R | 1 | 47K | 47K | 70240031 | R228 | | | | | W1 |
| 1 | 2.2K | 2.2K | 70240020 | 2.2K-1/4W-5%-CP-T&R | 1 | 2.2K | 2.2K | 70240020 | 1.5K-1/4W-5%-CP-T&R | | | | | |
| 1 | 1K | 1K | 70240017 | 1K-1/4W-5%-CP-T&R | 1 | 47M1 | 47M1 | 70210011 | 47K-1/4W-5%-CP-T&R | | | | | |
| 1 | 12K | 12K | 70240057 | 12K-1/4W-5%-CP-T&R | 1 | 100M5 | 100M5 | 70250006 | R231 | | | | | |
| 1 | 3.3K | 3.3K | 70240022 | 3.3K-1/4W-5%-CP-T&R | 1 | 1K | 1K | 70240017 | 47-10-5%-MD-T&R | | | | | |
| 1 | 10K | 10K | 70240025 | 10K-1/4W-5%-CP-T&R | 1 | 33K | 33K | 70240030 | R232 | | | | | |
| 1 | 1K | 1K | 70240017 | 1K-1/4W-5%-CP-T&R | 1 | 22K | 22K | 70240029 | 10K-5W-10%-WM-AXL | | | | | |
| 1 | 10K | 10K | 70240025 | 10K-1/4W-5%-CP-T&R | 1 | 100K | 100K | 70240034 | R233 | | | | | |
| 2 | 1K | 1K | 70240017 | 1K-1/4W-5%-CP-T&R | 1 | 1.3K | 1.3K | 70240061 | 1K-1/4W-5%-CP-T&R | | | | | |
| 1 | 47K | 47K | 70240031 | 47K-1/4W-5%-CP-T&R | 1 | 33K | 33K | 70240030 | 33K-1/4W-5%-CP-T&R | | | | | |
| 1 | 3.9K | 3.9K | 70241093 | 3.9K-1/4W-5%-CP-AXL | 1 | 22M1 | 22M1 | 70210001 | R234 | | | | | |
| 1 | 10K | 10K | 70240025 | 10K-1/4W-5%-CP-T&R | 2 | 1K | 1K | 70240017 | 22-1W-5%-MD-T&R | | | | | |
| 1 | 4.7K | 4.7K | 70240023 | 4.7K-1/4W-5%-CP-T&R | 1 | 5.6M5 | 5.6M5 | 70250026 | 1K-1/4W-5%-CP-T&R | | | | | |
| 1 | 470K | 470K | 70240038 | 470K-1/4W-5%-CP-T&R | 1 | 33K | 33K | 70240030 | R241, R242 | | | | | |
| 1 | 100K | 100K | 70240034 | 100K-1/4W-5%-CP-T&R | 1 | 22K | 22K | 70240029 | 5.6K-10%-MD-AXL | | | | | |
| 1 | 1K | 1K | 70240017 | 1K-1/4W-5%-CP-T&R | 1 | 10K | 10K | 70240025 | R243 | | | | | |
| 1 | 6.8K | 6.8K | 70240024 | 6.8K-1/4W-5%-CP-T&R | 1 | 100 | 100 | 70240010 | 22K-1/4W-5%-CP-T&R | | | | | |
| 1 | 680 | 680 | 70240016 | 680-1/4W-5%-CP-T&R | 1 | 10K | 10K | 70240025 | 10K-1/4W-5%-CP-T&R | | | | | |
| 1 | 470 | 470 | 70240015 | 470-1/4W-5%-CP-T&R | 1 | 2.7K | 2.7K | 70240021 | 2.7K-1/4W-5%-CP-T&R | | | | | |
| 1 | 2.7K | 2.7K | 70240021 | 2.7K-1/4W-5%-CP-T&R | 1 | 1.5K | 1.5K | 70240018 | R249 | | | | | |
| 1 | 2.2K | 2.2K | 70240020 | 2.2K-1/4W-5%-CP-T&R | 1 | 22K | 22K | 70240029 | 1.5K-1/4W-5%-CP-T&R | | | | | |
| 1 | 1.82K91 | 1.82K91 | 70241078 | 1.82K-1/4W-5%-CP-T&R | 2 | 1187BOW | 70900366 | 70900366 | R250 | | | | | |
| 1 | 10K | 10K | 70240025 | 10K-1/4W-5%-CP-T&R | 1 | 375BOWD | 70900295 | 70900295 | DEX SPACER 1 3/16 W/4-40 IN | | | | | |
| 1 | 1.3K | 1.3K | 70240061 | 1.3K-1/4W-5%-CP-T&R | 1 | 25080 | 70900913 | 70900913 | R01, R02 | | | | | |
| 1 | 33K | 33K | 70240030 | 33K-1/4W-5%-CP-T&R | 1 | 937BOWD | 70900786 | 70900786 | SPACER, 3/8,R(44),.187 SWAGE ALUM. | | | | | |
| 1 | 1K | 1K | 70240017 | 1K-1/4W-5%-CP-T&R | 1 | 375BOWD | 70900295 | 70900295 | R04 | | | | | |
| 1 | 47M1 | 47M1 | 70210011 | 47-10-5%-MD-T&R | 1 | 1187BOW | 70900366 | 70900366 | SPACER, 15/16,R(44),.187 SWAGE ALUM. | | | | | |
| 1 | 100M5 | 100M5 | 70250006 | 100-5W-10%-WM-AXL | 1 | 937BOWD | 70900786 | 70900786 | SPACER, 3/8,R(44),.187 SWAGE ALUM. | | | | | |
| 1 | 1.5K | 1.5K | 70240018 | 1.5K-1/4W-5%-CP-T&R | 1 | 1187BOW | 70900366 | 70900366 | R06 | | | | | |
| 1 | 180 | 180 | 70240012 | 180-1/4W-5%-CP-T&R | 1 | 937BOWD | 70900786 | 70900786 | DEX SPACER 1 3/16 W/4-40 IN | | | | | |
| 1 | 3.3K | 3.3K | 70240022 | 3.3K-1/4W-5%-CP-T&R | 2 | 25080W | 70900785 | 70900785 | R07 | | | | | |
| 1 | 2KMS | 2KMS | 70250063 | 2K-5W-10%-WM-AXL | 1 | 375BOWD | 70900295 | 70900295 | DEX SPACER 1 3/16 W/4-40 IN | | | | | |
| 1 | .33M10 | .33M10 | 70250011 | .33-10W-10%-WM-AXL | 2 | SU2PP | SU2PP | 71322251 | SPACER, 1/4,R(44),.187 SWAGE ALUM. | | | | | |
| 1 | 22K | 22K | 70240029 | 22K-1/4W-5%-CP-T&R | 1 | SW2345 | SW2345 | 71322245 | SPACER, 3/8,R(44),.187 SWAGE ALUM. | | | | | |
| 1 | 180 | 180 | 70240012 | 180-1/4W-5%-CP-T&R | 1 | 12VRELAY | 71322277 | 71322277 | R08 | | | | | |
| 2 | 100FP | 100FP | 70240096 | 100FP-1/4W-5%-FP-T&R | 1 | REL2250 | REL2250 | 71322250 | SPACER, 3/8,R(44),.187 SWAGE ALUM. | | | | | |
| 1 | .33M10 | .33M10 | 70250011 | .33-10W-10%-WM-AXL | 2 | 4560 | 4560 | 70414560 | SPACER, 15/16,R(44),.187 SWAGE ALUM. | | | | | |
| 1 | 33 | 33 | 70240004 | 33-1/4W-5%-CP-T&R | 1 | 3280 | 3280 | 70483280 | R0101 | | | | | |
| 2 | 100FP | 100FP | 70240096 | 100FP-1/4W-5%-FP-T&R | 2 | 4560 | 4560 | 70414560 | 4560 DUAL OP AMP IC | | | | | |
| 1 | .33M10 | .33M10 | 70250011 | .33-10W-10%-WM-AXL | 1 | 87478 | 87478 | 70487478 | U100, U101 | | | | | |
| 1 | 180 | 180 | 70240012 | 180-1/4W-5%-CP-T&R | 1 | POT0703 | 71190703 | 71190703 | CA3280B IC DUAL OTA | | | | | |
| 1 | 100FP | 100FP | 70240096 | 100FP-1/4W-5%-FP-T&R | 2 | 4560 | 4560 | 70414560 | U102 | | | | | |
| 1 | 22K | 22K | 70240029 | 22K-1/4W-5%-CP-T&R | 1 | 87478 | 87478 | 70487478 | 4560 DUAL OP AMP IC | | | | | |
| 1 | .33M10 | .33M10 | 70250011 | .33-10W-10%-WM-AXL | 1 | 4560 | 4560 | 70414560 | U101, U200 | | | | | |
| 1 | 180 | 180 | 70240012 | 180-1/4W-5%-CP-T&R | 1 | POT0701 | 71190701 | 71190701 | 87478 SING OTA JG-PKG IC | | | | | |
| 1 | 100FP | 100FP | 70240096 | 100FP-1/4W-5%-FP-T&R | 4 | POT0703 | 71190703 | 71190703 | T201 | | | | | |
| 1 | 22K | 22K | 70240029 | 22K-1/4W-5%-CP-T&R | 1 | POT0701 | 71190701 | 71190701 | 4560 DUAL OP AMP IC | | | | | |
| 1 | .33M10 | .33M10 | 70250011 | .33-10W-10%-WM-AXL | 1 | POT0703 | 71190703 | 71190703 | U202, U203 | | | | | |
| 1 | 2KMS | 2KMS | 70250063 | 2K-5W-10%-WM-AXL | 1 | POT0701 | 71190701 | 71190701 | 10KA 120M RDC ROTARY POT | | | | | |
| 1 | 3.3K | 3.3K | 70240022 | 3.3K-1/4W-5%-CP-T&R | 1 | POT0703 | 71190703 | 71190703 | VR100 | | | | | |
| 1 | 400M5 | 400M5 | 70250062 | 400-5W-10%-WM-AXL | 1 | POT0702 | 71190702 | 71190702 | 50K 120M RDC ROTARY POT W/DTT | | | | | |
| | | | | R236 | | | | | VR101 | | | | | |
| | | | | | | | | | VR102, VR103, VR104, VR105 | | | | | |
| | | | | | | | | | 50K 120M RDC ROTARY POT W/DTT | | | | | |
| | | | | | | | | | VR106 | | | | | |
| | | | | | | | | | VR107 | | | | | |
| | | | | | | | | | 100K 120M RDC ROTARY POT | | | | | |
| | | | | | | | | | VR108 | | | | | |



| | |
|--------------------------|------|
| PENNEY ELECTRONICS CORP. | |
| MMA-T II | |
| DATE | REV. |
| 10/1/60 | 1 |
| 10/1/60 | 2 |
| 10/1/60 | 3 |
| 10/1/60 | 4 |
| 10/1/60 | 5 |
| 10/1/60 | 6 |
| 10/1/60 | 7 |
| 10/1/60 | 8 |
| 10/1/60 | 9 |
| 10/1/60 | 10 |
| 10/1/60 | 11 |
| 10/1/60 | 12 |
| 10/1/60 | 13 |
| 10/1/60 | 14 |
| 10/1/60 | 15 |
| 10/1/60 | 16 |
| 10/1/60 | 17 |
| 10/1/60 | 18 |
| 10/1/60 | 19 |
| 10/1/60 | 20 |
| 10/1/60 | 21 |
| 10/1/60 | 22 |
| 10/1/60 | 23 |
| 10/1/60 | 24 |
| 10/1/60 | 25 |
| 10/1/60 | 26 |
| 10/1/60 | 27 |
| 10/1/60 | 28 |
| 10/1/60 | 29 |
| 10/1/60 | 30 |
| 10/1/60 | 31 |
| 10/1/60 | 32 |
| 10/1/60 | 33 |
| 10/1/60 | 34 |
| 10/1/60 | 35 |
| 10/1/60 | 36 |
| 10/1/60 | 37 |
| 10/1/60 | 38 |
| 10/1/60 | 39 |
| 10/1/60 | 40 |
| 10/1/60 | 41 |
| 10/1/60 | 42 |
| 10/1/60 | 43 |
| 10/1/60 | 44 |
| 10/1/60 | 45 |
| 10/1/60 | 46 |
| 10/1/60 | 47 |
| 10/1/60 | 48 |
| 10/1/60 | 49 |
| 10/1/60 | 50 |
| 10/1/60 | 51 |
| 10/1/60 | 52 |
| 10/1/60 | 53 |
| 10/1/60 | 54 |
| 10/1/60 | 55 |
| 10/1/60 | 56 |
| 10/1/60 | 57 |
| 10/1/60 | 58 |
| 10/1/60 | 59 |
| 10/1/60 | 60 |
| 10/1/60 | 61 |
| 10/1/60 | 62 |
| 10/1/60 | 63 |
| 10/1/60 | 64 |
| 10/1/60 | 65 |
| 10/1/60 | 66 |
| 10/1/60 | 67 |
| 10/1/60 | 68 |
| 10/1/60 | 69 |
| 10/1/60 | 70 |
| 10/1/60 | 71 |
| 10/1/60 | 72 |
| 10/1/60 | 73 |
| 10/1/60 | 74 |
| 10/1/60 | 75 |
| 10/1/60 | 76 |
| 10/1/60 | 77 |
| 10/1/60 | 78 |
| 10/1/60 | 79 |
| 10/1/60 | 80 |
| 10/1/60 | 81 |
| 10/1/60 | 82 |
| 10/1/60 | 83 |
| 10/1/60 | 84 |
| 10/1/60 | 85 |
| 10/1/60 | 86 |
| 10/1/60 | 87 |
| 10/1/60 | 88 |
| 10/1/60 | 89 |
| 10/1/60 | 90 |
| 10/1/60 | 91 |
| 10/1/60 | 92 |
| 10/1/60 | 93 |
| 10/1/60 | 94 |
| 10/1/60 | 95 |
| 10/1/60 | 96 |
| 10/1/60 | 97 |
| 10/1/60 | 98 |
| 10/1/60 | 99 |
| 10/1/60 | 100 |

PARTS LIST IS FOR BASE DESIGN.
SEE RD. LAYOUT FOR DIFFERENCES

| * PTY. | * QTY. | * NAME | * VALUE | * PART | * DESCRIPTION | * DIS |
|--------|----------|----------|---------|----------|----------------------------------|--|
| | | | | NUMBER | SERVICE | OPERATIONS ***** |
| 1 | 8209F | 8209F | | 70340502 | C100 | |
| 1 | 1009F | 1009F | | 70340504 | 1.009F-108-SVDC-T/C-7&R | C101 |
| 1 | 100FF | 100FF | | 70340500 | 1.00FF-58-----T/C-7&R | C103 |
| 1 | 47086.3 | 47086.3 | | 70320183 | 47086-208-6-SVDC-EN-7&A | C104 |
| 1 | 22850 | 22850 | | 70320181 | 2.2850-208-SVDC-EN-7&A | C105 |
| 2 | .933 | .933 | | 70340504 | .033MF-108-SVDC-MON-7&R | C105, C107 |
| 1 | 399F | 399F | | 70340052 | 3.999F-108-SVDC-T/C-7&R | C108, C109, C111 |
| 1 | 2709F | 2709F | | 70340057 | 2.709F-108-SVDC-T/C-7&R | C112 |
| 1 | .0047 | .0047 | | 70340057 | .0047MF-108-SVDC-MON-7&R | C113 |
| 2 | 22850 | 22850 | | 70320181 | 2.2850-208-SVDC-EN-7&A | C114, C115 |
| 1 | .1 | .1 | | 70340100 | .1MF-180-208-SVDC-AXL-7&R | C116 |
| 1 | 22850 | 22850 | | 70320181 | 2.2850-208-SVDC-EN-7&A | C117 |
| 1 | .1 | .1 | | 70340100 | .1MF-180-208-SVDC-AXL-7&R | C118 |
| 1 | 22850 | 22850 | | 70320181 | 2.2850-208-SVDC-EN-7&A | C119 |
| 1 | 1000R35 | 1000R35 | | 70320186 | 1.0000W-208-3SVDC-EN-7&A | C120 |
| 1 | 22850 | 22850 | | 70320181 | 2.2850-208-SVDC-EN-7&A | C121 |
| 1 | .01CD | .01CD | | 70320248 | .012MF-208-100VDC-CD-7&A | C122 |
| 1 | 22850 | 22850 | | 70320181 | 2.2850-208-SVDC-EN-7&A | C123 |
| 1 | .1 | .1 | | 70340100 | .1MF-180-208-SVDC-AXL-7&R | C124 |
| 1 | 1000R35 | 1000R35 | | 70320186 | 1.0000W-208-3SVDC-EN-7&A | C125 |
| 1 | .1M | .1M | | 70330129 | .1M 50 Wdc m7 7&A | C126 |
| 2 | .018M | .018M | | 70330126 | .018M 50 Wdc m7 7&A | C127, C128 |
| 1 | 47V50 | 47V50 | | 70320182 | 4.7MF-208-SVDC-LN-7&A | C129 |
| 1 | .001 | .001 | | 70340000 | .001MF-108-SVDC-MON-7&R | C130 |
| 1 | 47V50 | 47V50 | | 70320182 | 4.7MF-208-SVDC-EN-7&A | C131 |
| 1 | 22850 | 22850 | | 70320181 | 2.2850-208-SVDC-EN-7&A | C132, C133 |
| 2 | 1000R35 | 1000R35 | | 70320186 | 1.0000W-208-3SVDC-EN-7&A | C134 |
| 1 | 1009F | 1009F | | 70340054 | 1.009F-108-SVDC-T/C-7&R | C135 |
| 1 | .228F2 | .228F2 | | 70330114 | 0.22 MF 50 100V STC FILM T&A | C204 |
| 1 | 470063 | 470063 | | 7040102 | 4700 MF 63VDC LYTIC CD-7&A | C205 |
| 1 | 2.2850 | 2.2850 | | 70320180 | 2.2850-208-SVDC-EN-7&A | C206 |
| 1 | 399F | 399F | | 70340052 | 3.999F-108-SVDC-T/C-7&R | C208 |
| 1 | .01CD | .01CD | | 70320248 | .012MF-208-100VDC-CD-7&A | C209 |
| 1 | 470063 | 470063 | | 7040102 | 4700 MF 63VDC LYTIC CD-7&A | C210 |
| 1 | 2.2850 | 2.2850 | | 70320180 | 2.2850-208-SVDC-EN-7&A | C211 |
| 1 | 1006K3 | 1006K3 | | 70326264 | 1.0006W-208-6VDC-EN-7&A | C212 |
| 1 | 1009F | 1009F | | 70340054 | 1.009F-108-SVDC-T/C-7&R | C213 |
| 1 | 22850 | 22850 | | 70320181 | 2.2850-208-SVDC-EN-7&A | C214 |
| 1 | .1 | .1 | | 70340100 | .1MF-180-208-SVDC-AXL-7&R | C215 |
| 1 | 22850 | 22850 | | 70320181 | 2.2850-208-SVDC-EN-7&A | C216, C217 |
| 1 | 1000R35 | 1000R35 | | 70320186 | 1.0000W-208-3SVDC-EN-7&A | C218 |
| 1 | 22850 | 22850 | | 70320181 | 2.2850-208-SVDC-EN-7&A | C219 |
| 1 | 399F | 399F | | 70340052 | 3.999F-108-SVDC-T/C-7&R | C221 |
| 1 | .18F | .18F | | 70330113 | 0.18 MF 10 100V STC FILM T&A | C224 |
| 1 | .001VLPN | .001VLPN | | 70330104 | 0.01 MF 125VDC VIL MYLAR -40-208 | C236, C237, C238, C239, C240, C241, C242 |
| 1 | .1 | .1 | | 70340100 | .1MF-180-208-SVDC-AXL-7&R | C230, C231, C232, C233, C234, C235, C236, C237, C238, C239, C240, C241, C242 |

| | | | | |
|---|---------|----------|----------|---|
| 1 | 22850 | 22850 | 70320181 | 22W -204-SOVCDC-EL-TA C319 |
| 1 | 399F | 399F | 70320052 | 399F-SOVCDC-7-C-A C319 |
| 1 | 10850L | 10850L | 70320018 | 108W-204-SOVCDC-LA-TA C319 |
| 6 | .1 | .1 | 70340100 | 108W-204-SOVCDC-AL-TA C319 |
| 1 | 1M6148 | 4148 | 70461418 | 1M6148 75V 10MA SILICON DIODE CR181, CR42, CR24, CR44, CR45, CR46 CR180, CR191, CR192, CR193, CR194, CR195 CR196 |
| 1 | 1M758A | 1M758A | 70420758 | 1M758A 75V 10MA SILICON DIODE CR186 |
| 1 | 1M4148 | 4148 | 70461418 | 1M4148 75V 10MA SILICON DIODE CR181 |
| 1 | 1L8071 | 1L8071 | 70450035 | HUMP 1750 GREEN LED T-1 CR186 |
| 1 | 1L8071 | 1L8071 | 70450034 | SL834V3 GP RED LED T1 ROUND CR186 |
| 1 | 1M4003 | 1M4003 | 70460403 | 1M4003 75V 10MA SILICON DIODE CR181 |
| 2 | 1M4148 | 4148 | 70461418 | 1M4148 75V 10MA SILICON DIODE CR111, CR112 |
| 3 | 1M4003 | 1M4003 | 70460403 | 1M4003 75V 10MA SILICON DIODE CR114, CR115, CR116 |
| 1 | 1M4148 | 4148 | 70461418 | 1M4148 75V 10MA SILICON DIODE CR116 |
| 2 | 1M4003 | 1M4003 | 70460403 | 1M4003 75V 10MA SILICON DIODE CR115, CR119 |
| 1 | 1M4148 | 4148 | 70461418 | 1M4148 75V 10MA SILICON DIODE CR120 |
| 1 | 1M4003 | 1M4003 | 70460403 | 1M4003 75V 10MA SILICON DIODE CR121 |
| 1 | 1L8071L | 1L8071L | 70450036 | 1L8071L T1 (RED AND) VERT. CR122 |
| 1 | 1M4003 | 1M4003 | 70460403 | 1M4003 75V 10MA SILICON DIODE CR123 |
| 1 | 1N4744 | 4744 | 70440102 | 70440102 15V 5% ZENER DIODE CR124 |
| 1 | 1M4148 | 4148 | 70461418 | 1M4148 75V 10MA SILICON DIODE CR231, CR204 |
| 1 | 1L5593 | 5593 | 70465393 | 1L5593 100 200V, 1%, 5% DIODE -TAE CR205 |
| 2 | 1M7528 | 1M7528 | 70400752 | 1M7528 6A, SILICON DIODE CR206, CR207 |
| 3 | 1M4148 | 4148 | 70461418 | 1M4148 75V 10MA SILICON DIODE CR208, CR209, CR210 |
| 1 | 1L5593 | 5593 | 70465393 | 1L5593 100 200V, 1%, 5% DIODE -TAE CR211 |
| 1 | 1M4003 | 1M4003 | 70460403 | 1M4003 75V 10MA SILICON DIODE CR212, CR214 |
| 1 | 1M7528 | 1M7528 | 70400752 | 1M7528 6A, SILICON DIODE CR215, CR216 |
| 1 | 1M4003 | 1M4003 | 70460403 | 1M4003 75V 10MA SILICON DIODE CR217 |
| 1 | 13886 | 13886 | 70431386 | SE-13886-2 DUAL DIODE CR218 |
| 4 | 1M4148 | 4148 | 70461418 | 1M4148 75V 10MA SILICON DIODE CR219, CR220, CR221, CR222 |
| 1 | 1N4744 | 4744 | 70440102 | 70440102 15V 5% ZENER DIODE CR223 |
| 6 | 1M4148 | 4148 | 70461418 | 1M4148 75V 10MA SILICON DIODE CR224, CR227, CR228, CR229, CR230, CR231, CR232 |
| 4 | CLP1163 | CLP1163 | 70901163 | FUSEBLT, PC MT - T&A CR233 |
| 1 | 8002754 | 8002754 | 70902754 | 8002754 100 200V, 1%, 5% DIODE -TAE CR234 |
| 1 | 8006952 | 8006952 | 70316922 | 100 200V, 1%, 5% DIODE -TAE CR235 |
| 1 | 4680R4A | 70317084 | 70317084 | 4 PIN RKA R/Q P/F/LK ID CR236 |
| 1 | RC6A230 | 71466230 | 71466230 | 4 PIN RKA, R/A PC/PC-UNMATCHED J109 |
| 1 | FMP | FMP | 70317181 | 70317181 171 C. FEMALE MOLEX PIN J110 |
| 1 | M0P | M0P | 70317182 | 70317182 171 C. MALE MOLEX PIN J111 |
| 1 | RC6A230 | 71466230 | 71466230 | 4 PIN RKA, R/A PC/PC-UNMATCHED J112 |
| 1 | RC6A229 | 71466229 | 71466229 | 4 PIN RKA, R/A PC/PC-UNMATCHED J113 |
| 1 | RC6A230 | 71466230 | 71466230 | 4 PIN RKA, R/A PC/PC-UNMATCHED J114 |
| 1 | FMR | FMP | 70317181 | 70317181 171 C. FEMALE MOLEX PIN J115 |
| 1 | M0P | M0P | 70317182 | 70317182 171 C. MALE MOLEX PIN J116 |
| 1 | FMP | FMP | 70317181 | 70317181 171 C. FEMALE MOLEX PIN J117 |
| 1 | M0P | M0P | 70317182 | 70317182 171 C. MALE MOLEX PIN J118 |
| 4 | FMP | FMP | 70317181 | 70317181 171 C. FEMALE MOLEX PIN J119, J120, J121, J122, J123 |
| 7 | 8027 | 70316194 | 70316194 | 8027 150 200V, 1%, 5% DIODE -TAE CR237, CR238, CR239, CR240, CR241, CR242, CR243, CR244, CR245, CR246, CR247, CR248, CR249, CR250, CR251, CR252, CR253, CR254, CR255, CR256, CR257, CR258, CR259, CR260, CR261, CR262, CR263, CR264, CR265, CR266, CR267, CR268, CR269, CR270, CR271,< |

| | | | |
|------------|----------|----------|--|
| 1.12CPK4 | 15CPK4J | 70680042 | 11 CONDUCTOR 4' JUMPER CABLE 0.100 CYMS P1 |
| 1.12CPK5P1 | 70680051 | 70680001 | 12 C 9-7IN .100 15' JUMPR |
| 1.11CPK4J | 15CPK4J | 70680002 | 11 CONDUCTOR 4' JUMPR 0.100 CYMS P1 |
| 1.20SP04 | 5934 | 70483004 | 120-SP/97233 TO 92 HPF |
| | | | Q104 |
| 2.6534 | 6534 | 70466533 | MSR-6533/34 TO-92 HPF TRANS T&A |
| | | | Q151, Q152 |
| 2.7824C220 | 7824 | 70427826 | GC TRACT FOR VOR TO-220 |
| | | | Q103 |
| 1.6534 | 6534 | 70466534 | MSR-6533/34 TO-92 HPF TRANS T&A |
| | | | Q104 |
| 1.20SP04 | 5934 | 70483003 | 120-SP/97233 TO 92 HPF |
| | | | Q105 |
| 1.7815T220 | 7815 | 70403040 | 1815 15V LA FOR TO-220 RG |
| | | | Q104 |
| 1.7815T220 | 7815 | 70403040 | 1815 15V LA HSD TO 220 RG |
| | | | Q107 |
| 1.786 | 786 | 70460786 | MSR-7866 HPF TRANS T&A |
| | | | Q108 |
| 5.5331M8 | 5331 | 70409311 | MSR-5331 CASE-77 HPF XSP10R W/ HEATING |
| | | | Q207 |
| 2.84140 | 84140 | 70484140 | 82-84140 PNP 4A 140 V TO-3 |
| | | | Q202 |
| 1.6530 | 6530 | 70466531 | MSR-6531 TO92 HPF TRANS |
| | | | Q203 |
| 1.6534 | 6534 | 70466533 | MSR-6533/34 TO-92 HPF TRANS T&A |
| | | | Q204 |
| 2.74140 | 74140 | 70474140 | MSR-74140 PNP 4A 140V TO-3 |
| | | | Q205, Q206 |
| 1.7018NS | 7018 | 70467013 | MSR-7013 CASE-77 HPF XSP10R W/ HEATING |
| | | | Q207 |
| 1.8053M1 | A03 | 70476036 | MSR-8053 HPF DAWLINGTON TRANS T&A |
| | | | Q101 |
| 1.10K | 10K | 70420025 | 10K-1/4W-5M-CF-TPR |
| | | | R101 |
| 1.1K | 1K | 70420017 | 1K-1/4W-5M-CF-TPR |
| | | | R102 |
| 1.22K | 22K | 70420039 | 22K-1/4W-5M-CF-TPR |
| | | | R101 |
| 1.18K | 18K | 70420028 | 18K-1/4W-5M-CF-TPR |
| | | | R101 |
| 1.6.8K | 6.8K | 70420024 | 6.8K-1/4W-5M-CF-TPR |
| | | | R104 |
| 2.12K | 12K | 70420057 | 12K-1/4W-5M-CF-TPR |
| | | | R105, R106 |
| 1.10K | 10K | 70420025 | 10K-1/4W-5M-CF-TPR |
| | | | R107 |
| 4.4.7K | 4.7K | 70420023 | 4.7K-1/4W-5M-CF-TPR |
| | | | R108 |
| 1.10K | 10K | 70420025 | 10K-1/4W-5M-CF-TPR |
| | | | R109 |
| 1.6.8K | 6.8K | 70420024 | 6.8K-1/4W-5M-CF-TPR |
| | | | R110 |
| 1.2.2K | 2.2K | 70420020 | 2.2K-1/4W-5M-CF-TPR |
| | | | R111 |
| 1.1K | 1K | 70420017 | 1K-1/4W-5M-CF-TPR |
| | | | R112 |
| 1.3.3K | 3.3K | 70420022 | 3.3K-1/4W-5M-CF-TPR |
| | | | R113 |
| 1.15K | 15K | 70420027 | 15K-1/4W-5M-CF-TPR |
| | | | R114 |
| 4.4.7K | 4.7K | 70420023 | 4.7K-1/4W-5M-CF-TPR |
| | | | R115 |
| 2.22K | 22K | 70420039 | 22K-1/4W-5M-CF-TPR |
| | | | R116 |
| 1.1K | 1K | 70420017 | 1K-1/4W-5M-CF-TPR |
| | | | R117 |
| 1.10K | 10K | 70420025 | 10K-1/4W-5M-CF-TPR |
| | | | R118 |
| 1.1.82R21 | 1.82R21 | 70241578 | 1.82K-1/4W-1/2 W-TPR |
| | | | R119 |
| 1.1K | 1K | 70420017 | 1K-1/4W-5M-CF-TPR |
| | | | R120 |
| 1.47 | 47 | 70420008 | 47-1/4W-5M-CF-TPR |
| | | | R121 |
| 1.1K | 1K | 70420017 | 1K-1/4W-5M-CF-TPR |
| | | | R122 |
| 1.33K | 33K | 70240030 | 33K-1/4W-5M-CF-TPR |
| | | | R123 |
| 2.22K | 22K | 70420039 | 22K-1/4W-5M-CF-TPR |
| | | | R124, R125 |
| 1.10K | 10K | 70420025 | 10K-1/4W-5M-CF-TPR |
| | | | R126 |
| 1.100 | 100 | 70420010 | 100-1/4W-5M-CF-TPR |
| | | | R127 |
| 1.1K | 1K | 70420017 | 1K-1/4W-5M-CF-TPR |
| | | | R128 |
| 1.2.2K | 2.2K | 70420030 | 2.2K-1/4W-5M-CF-TPR |
| | | | R129, R130 |
| 1.47K | 47K | 70420031 | 47K-1/4W-5M-CF-TPR |
| | | | R131 |
| 1.470 | 470 | 70420012 | 470-1/4W-5M-CF-TPR |

