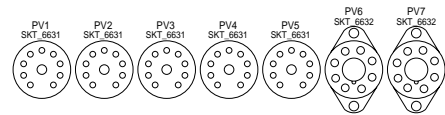
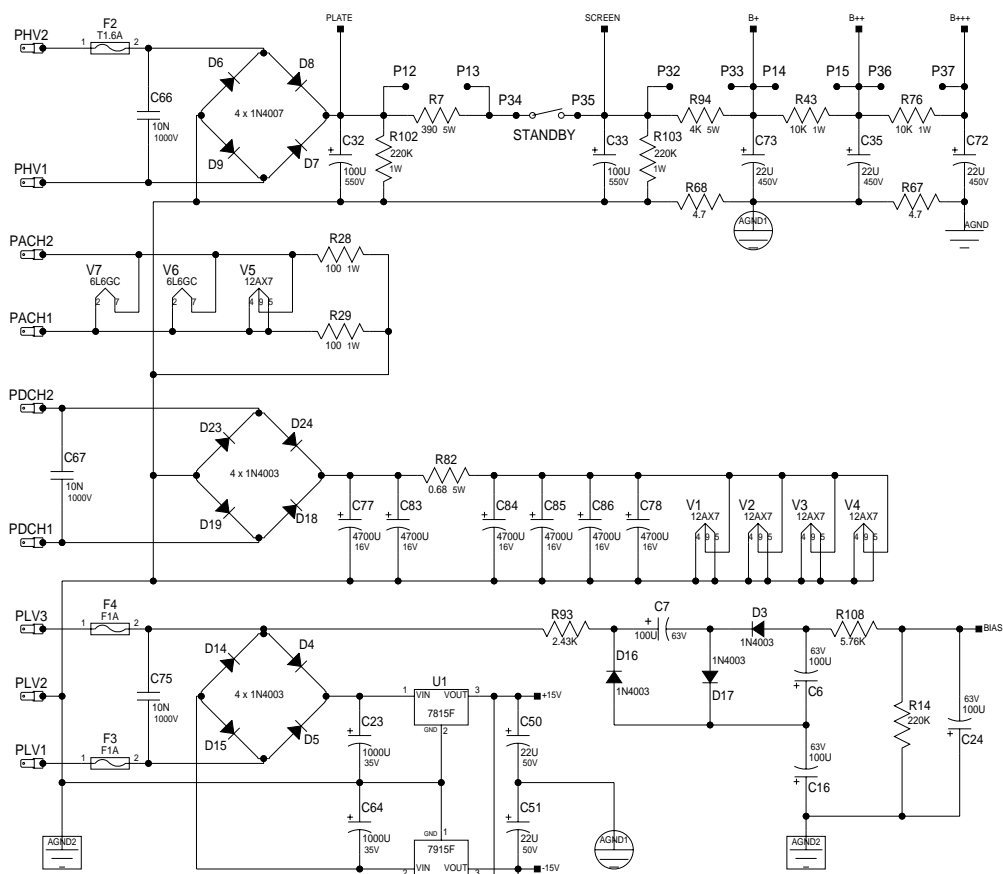
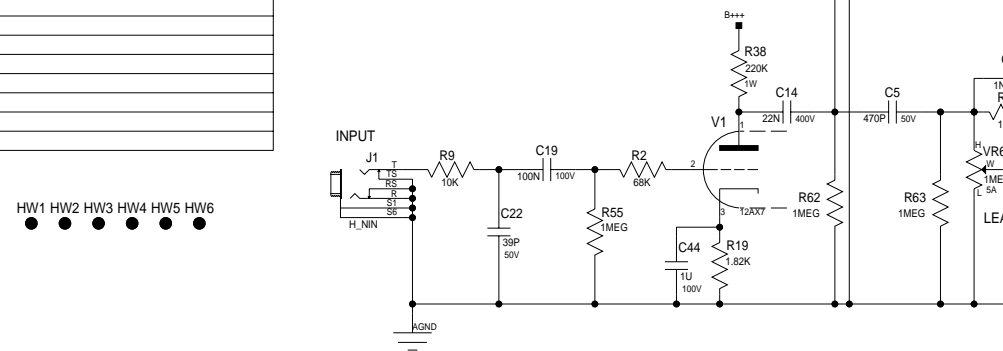
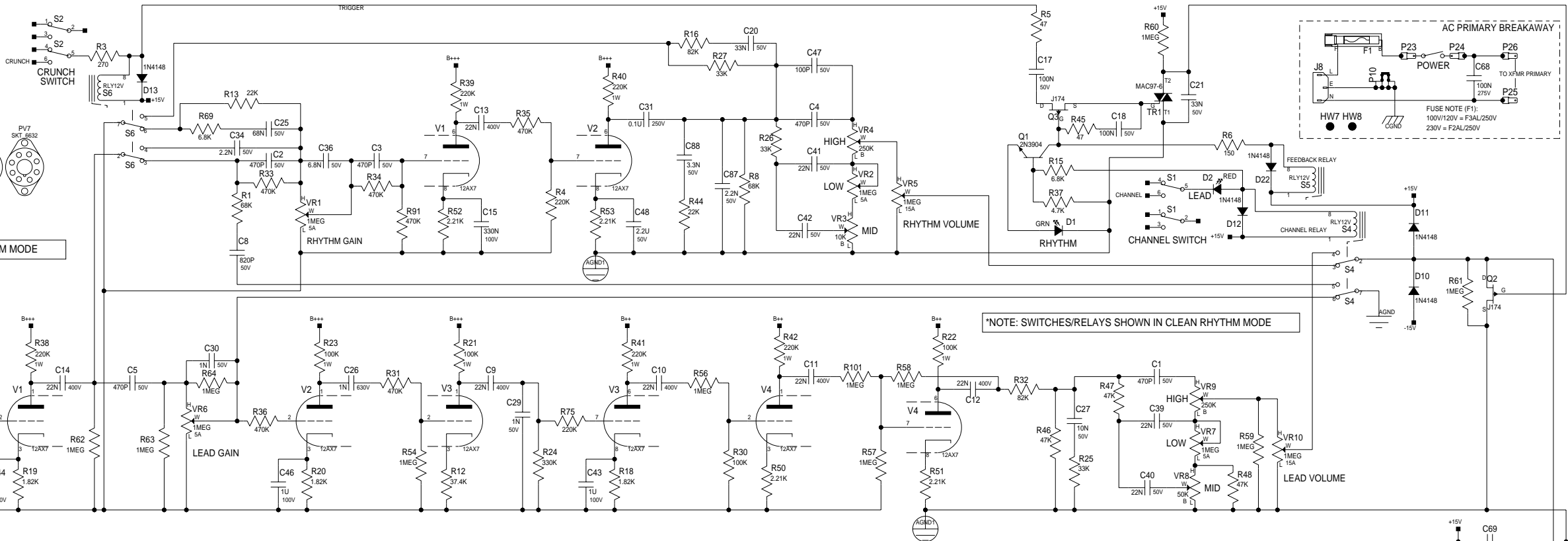


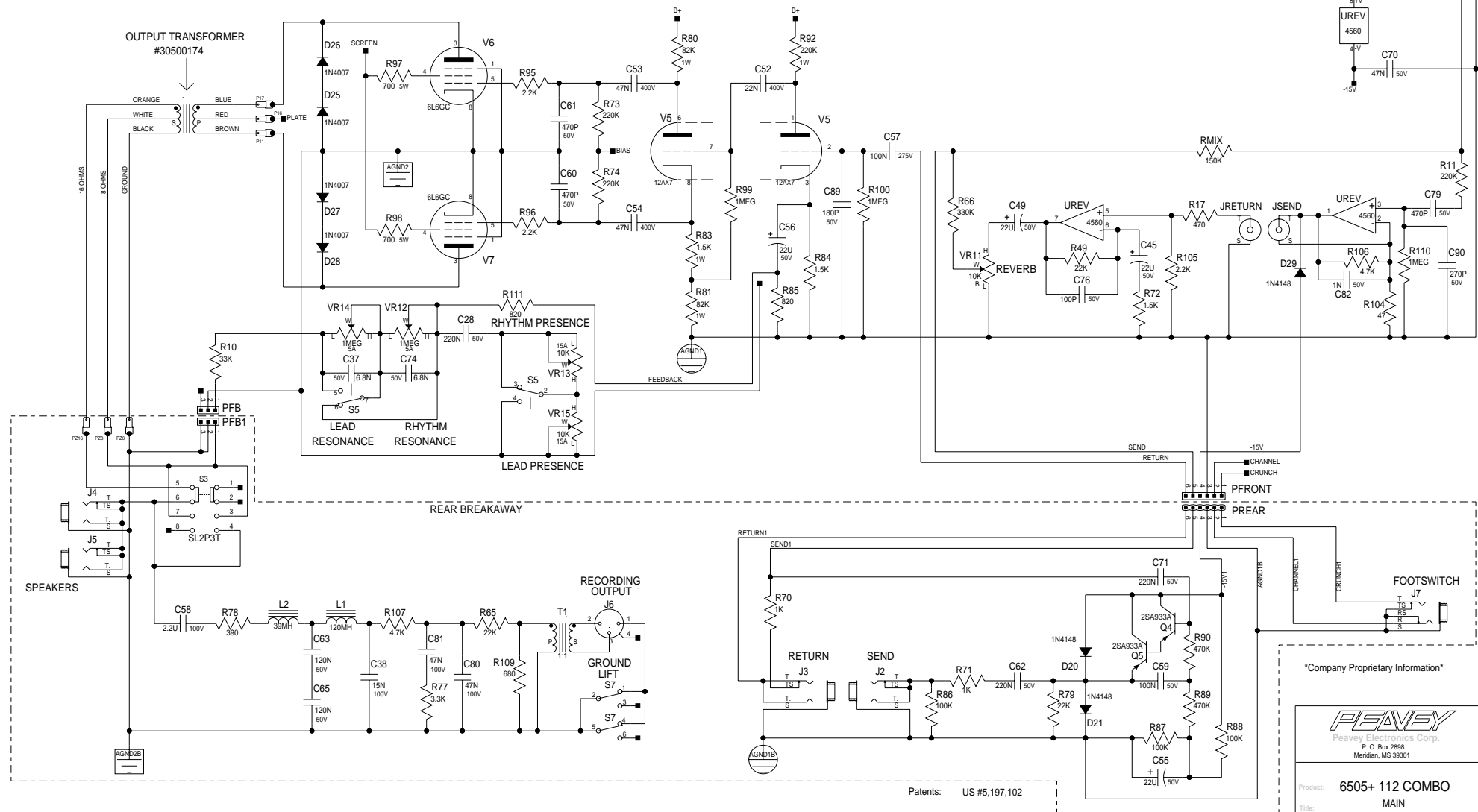
REV	Eng	Date:	Revision Description	ECN#
A				
B				
C				
D				
E				
F				

[illegible]

\*NOTE: SWITCHES/RELAYS SHOWN IN CLEAN RHYTHM MODE



Note: All thru hole Resistors are 1/4 Watt unless otherwise indicated.  
All SMT 1206 Resistors are 1/4 Watt.  
All SMT 0805 Resistors are 1/10 Watt.  
Note Capacitor Values are indicated as Follows:  
val p = pF (picoFarads) val \* 10 exp-12  
val n = nF (nanoFarads) val \* 10 exp-9 (1N=1000pF, 100N=0.1uF)  
val U = uF (microFarads) val \* 10 exp-6



\*Company Proprietary Information

**PEAVEY**  
Peavey Electronics Corp.  
P. O. Box 2898  
Meridian, MS 39301

Product: 6505+ 112 COMBO

MAIN

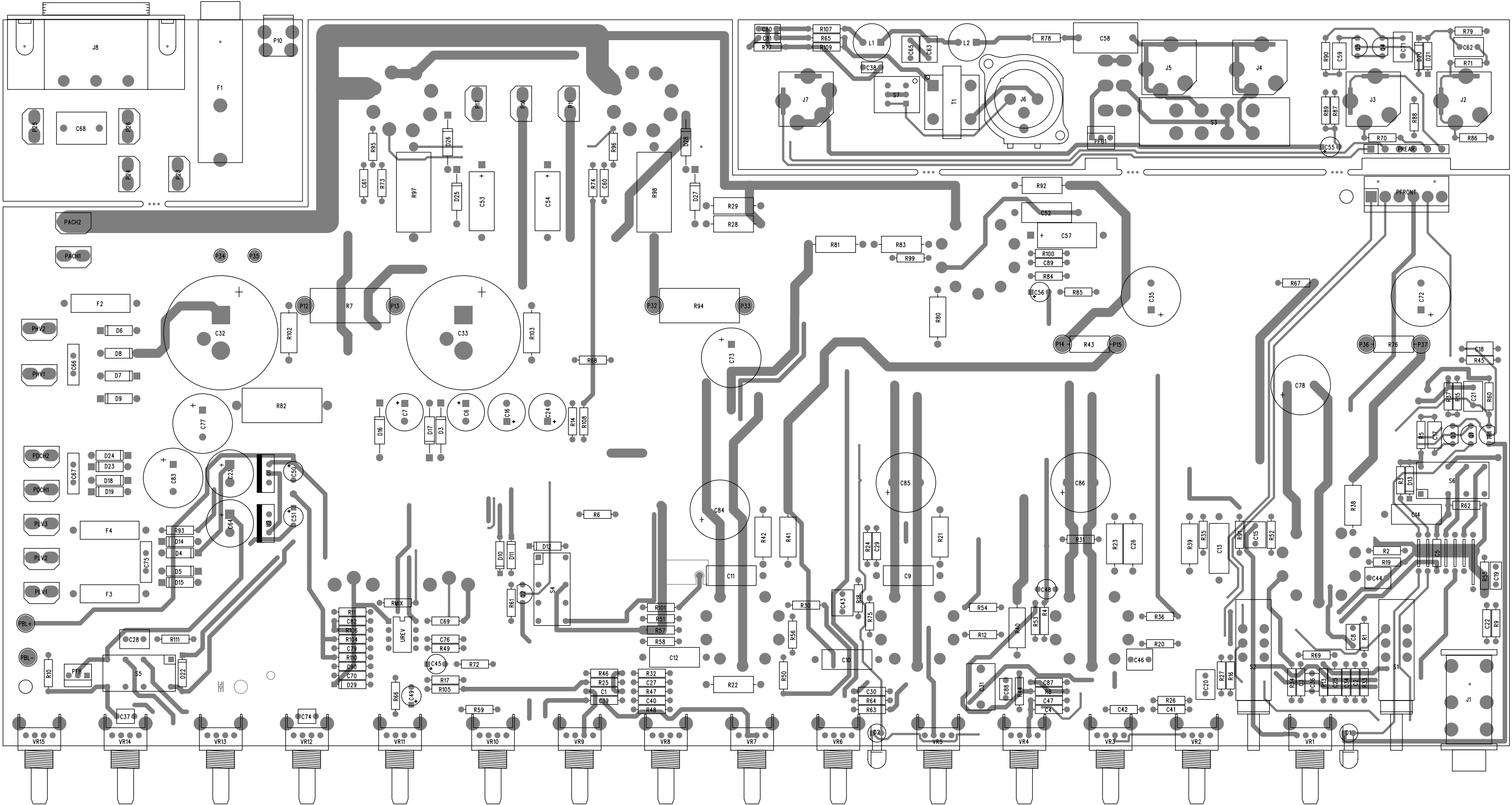
Project Number:	P0700038
-----------------	----------

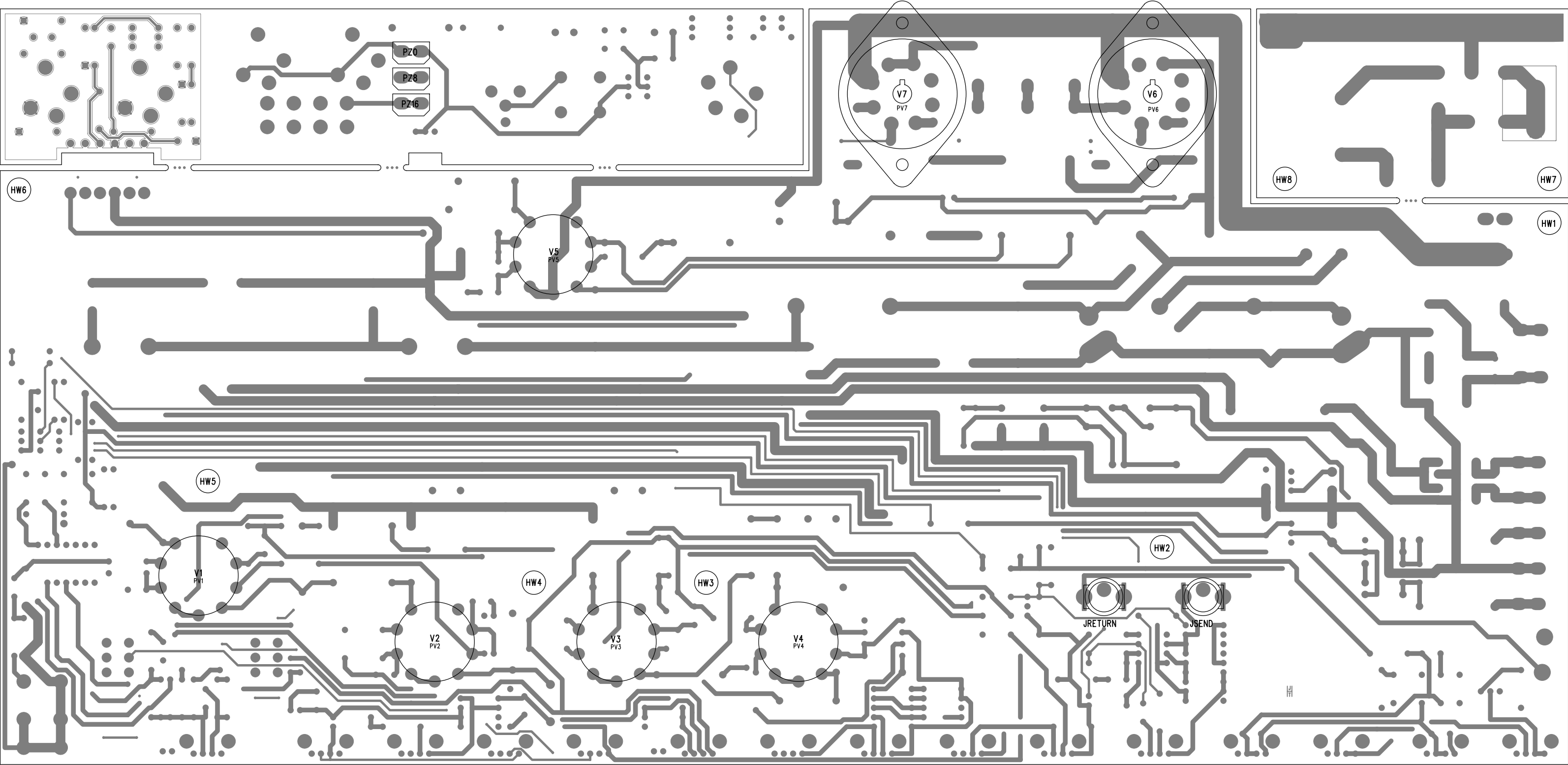
Eng: J. C. FIELDS	Release Date:
-------------------	---------------

Sheet 1 of 1      Saved: 10-9-2009

Copyright Peavey Electronics Corporation 2008

--	--





**6505 112 COMBO**

# BILL OF MATERIAL REPORT

-----

REPORT DATE/TIME: 10/15/2009 3:14:28 PM

BOARD NAME: 6505 112 COMBO

ASSEMBLY LEVEL NUMBER: 29100241

PROJECT NUMBER: P0700038

DESIGNER: AJJ 32101463B ECN 22023

Qty.	Part #	Description	Reference Designators
-----			
--			
2	30210003	100 1W 5% MO AXL	R28 R29
8	30210008	220K 1W 5% MO AXL	R38 R39 R40 R41 R42 R92 R102 R103
3	30210017	100K 1W 5% MO AXL	R21 R22 R23
2	30210018	10K 1W 5% MO AXL	R43 R76
1	30210080	1.5K 1W 5% CF AXL	R83
2	30210086	82K 1W 5% CF AXL	R80 R81
1	30240001	150 1/4W 5% CF AXL	R6
3	30240008	47 1/4W 5% CF AXL	R5 R45 R104
1	30240013	270 1/4W 5% CF AXL	R3
1	30240015	470 1/4W 5% CF AXL	R17
1	30240016	680 1/4W 5% CF AXL	R109
2	30240017	1K 1/4W 5% CF AXL	R70 R71
2	30240018	1500 1/4W 5% CF AXL	R72 R84
2	30240019	820 1/4W 5% CF AXL	R85 R111
3	30240020	2200 1/4W 5% CF AXL	R95 R96 R105
1	30240022	3300 1/4W 5% CF AXL	R77
3	30240023	4700 1/4W 5% CF AXL	R37 R106 R107
2	30240024	6800 1/4W 5% CF AXL	R15 R69
1	30240025	10K 1/4W 5% CF AXL	R9
5	30240029	22K 1/4W 5% CF AXL	R13 R44 R49 R65 R79

4	30240030	33K	1/4W	5%	CF	AXL	R10 R25 R26 R27
3	30240031	47K	1/4W	5%	CF	AXL	R46 R47 R48
3	30240032	68K	1/4W	5%	CF	AXL	R1 R2 R8
2	30240033	82K	1/4W	5%	CF	AXL	R16 R32
4	30240034	100K	1/4W	5%	CF	AXL	R30 R86 R87 R88
1	30240035	150K	1/4W	5%	CF	AXL	RMIX
6	30240036	220K	1/4W	5%	CF	AXL	R4 R11 R14 R73 R74 R75
2	30240037	330K	1/4W	5%	CF	AXL	R24 R66
8	30240038	470K	1/4W	5%	CF	AXL	R31 R33 R34 R35 R36 R89 R90 R91
4	30240039	1M	1/4W	5%	CF	AXL	R56 R58 R64 R101
1	30240044	5.76K	1/4W	1%	MF	AXL	R108
1	30240052	37.4K	1/4W	1%	MF	AXL	R12
1	30240055	2.43K	1/4W	1%	MF	AXL	R93
1	30240060	390	1/4W	5%	CF	AXL	R78
2	30240094	4.7	1/4W	10%	FP	AXL	R67 R68
4	30240145	2.21K	1/4W	1%	MF	AXL	R50 R51 R52 R53
3	30241078	1.82K	1/4W	1%	MF	AXL	R18 R19 R20
11	30241118	1M	1/4W	1%	MF	AXL	R54 R55 R57 R59 R60 R61 R62 R63 R99 R100 R110
1	30250020	390	5W	5%	FP	AXLH	R7
3	30320099	0.01UF	1000V	80-20%	Z5U		C66 C67 C75
2	30320105	0.047UF	400V	10%	PES	AXL	C53 C54
6	30320181	22UF	50V	20%	EL	RAD	C45 C49 C50 C51 C55 C56
1	30320184	2.2UF	50V	20%	ELN	RAD	C48

2	30320186	1000UF	35V	20%	EL	RAD	C23 C64
4	30320264	100UF	63V	20%	EL	RAD	C6 C7 C16 C24
1	30320281	1000PF	630V	10%	PE	AXL	C26
7	30320283	0.022UF	400V	10%	PE	AXL	C9 C10 C11 C12 C13 C14 C52
2	30320302	0.047UF	100V	5%	PES	RAD	C80 C81
1	30320334	0.1UF	250V	10%	PE	AXL	C57
1	30320338	2.2UF	100V	10%	PE	RADH	C58
3	30320339	22UF	450V	20%	EL	RADH	C35 C72 C73
1	30320556	0.1UF	275V	10%	"X"	RADH	C68
2	30320573	100UF	550V	20%	EL	SNPH	C32 C33
1	30320596	0.1UF	10%	250V	POLYPROPYLENE		C31
6	30320687	4700UF	16V	20%	EL	RADH	C77 C78 C83 C84 C85 C86
1	30330051	0.015UF	100V	5%	PE	RADH	C38
1	30330113	0.1UF	100V	10%	PPS	RAD	C19
2	30330115	0.033UF	50V	5%	PE	RAD	C20 C21
3	30330117	6800PF	50V	5%	PE	RAD	C36 C37 C74
3	30330128	0.22UF	50V	5%	PE	RAD	C28 C62 C71
1	30330130	3300PF	50V	5%	PE	RAD	C88
1	30330132	820PF	50V	5%	PE	RAD	C8
2	30330133	0.12UF	50V	5%	PE	RAD	C63 C65
1	30330146	0.33UF	100V	5%	PES	RAD	C15
3	30330150	1UF	100V	5%	PES	RAD	C43 C44 C46
3	30340000	1000PF	50V	10%	NPO	AXL	C29 C30 C82
2	30340004	2200PF	50V	10%	X7R	AXL	C34 C87
1	30340011	0.01UF	50V	10%	X7R	AXL	C27
4	30340012	0.022UF	50V	10%	X7R	AXL	C39 C40 C41 C42
2	30340016	0.047UF	50V	80-20%	Z5U	AXL	C69 C70

1	30340018	0.068UF 50V 10% X7R AXL	C25
1	30340052	39PF 50V 5% NPO AXL	C22
2	30340054	100PF 50V 10% NPO AXL	C47 C76
1	30340056	180PF 50V 10% NPO AXL	C89
1	30340057	270PF 50V 10% NPO AXL	C90
8	30340058	470PF 50V 10% NPO AXL	C1 C2 C3 C4 C5 C60 C61 C79
3	30340101	0.1UF 50V 10% X7R AXL	C17 C18 C59
1	30400318	7815F +15V INS TO-220F HOR	U1
1	30400319	7915 -15V INS TO-220F HOR	U2
2	30400933	2SA933ASLN PNP LN RAD	Q4 Q5
1	30414560	4560 DUAL OPAMP DIP8	UREV
1	30450053	RED T1 LED W/STOP LEAD	D2
1	30450054	GRN T1 LED W/STOP LEAD	D1
1	30460097	MAC97-6 TRIAC TO-92 T&A	TR1
2	30460174	J174 JFET P 30V TO92 RAD	Q2 Q3
1	30463905	2N3904 TO92 NPN RADIAL	Q1
11	30464003	1N4003 200V 1A SI DIODE	D3 D4 D5 D14 D15 D16 D17 D18 D19 D23 D24
8	30464007	1N4007 1KV, 1A, SI DIODE	D6 D7 D8 D9 D25 D26 D27 D28
8	30464148	1N4148 75V 10MA DIODE	D10 D11 D12 D13 D20 D21 D22 D29
1	30500026	DU-26 MIN. PC BAL OUTPUT XFMR	T1
1	30500104	39MH RADIAL INDUCTOR	L2
1	30500105	120MH RADIAL INDUCTOR	L1
1	30651157	BL 16 AWG, 4", 105 DEGREE, SI250, CPT	PBL-
1	30651158	YL 16 AWG, 4", 105 DEGREE, SI250, CPT	PBL+

2	30806604	EL34 POWER TUBE	V6 V7
5	30806629	12AX7 LOW MICROPHONIC	V1 V2 V3 V4 V5
5	30806631	TUBE SKT 9PIN CERAMIC	PV1 PV2 PV3 PV4 PV5
2	30806632	TUBE SKT OCTAL 6L6GC	PV6 PV7
2	30901244	1A FUSE 5X15MM PIG TAIL T&R	F3 F4
1	30901428	PWR INLET, RA SCREW MT PC RA GND	J8
1	30901429	EXT. FUSEHOLDER, PC MT	F1
1	30901785	SCREW TERM, 6-32 -PCB MT	P10
6	30901859	STND .500 T4-40, SW, AL, ST	HW1 HW2 HW3 HW4 HW5 HW6
2	30901890	STND .375 T4-40SW, AL, ST	HW7 HW8
1	30905025	FUSE, 1.6A--2AG--S/B--T&R	F2
2	31190900	10KB SNGL 12MM HOR	VR3 VR11
2	31190908	250KB SNGL 12MM HOR	VR4 VR9
6	31190910	1M5A SNGL 12MM HOR	VR1 VR2 VR6 VR7 VR12 VR14
2	31190911	1M15A SNGL 12MM HOR	VR5 VR10
1	31322251	SWITCH DPDT PP 3.3MM PC V	S7
2	31322289	SWITCH DPDT PP 3.3MM PC H	S1 S2
1	31322328	SWITCH 2P3T SLIDE PC V	S3
3	31322378	RELAY 12V DPDT LOW MIC	S4 S5 S6
1	31466165	JK RA 12.5MM NIN STEO-88	J1
4	31466214	2 TIP HID JACK NINS W/SPD	J2 J3 J4 J5
1	31466217	STEREO HID JACK NINS W/SPD	J7
1	31466324	MXLR NC3MAV A-SER VERT	J6
2	31466493	SNAP-FIT VERT RCA JACK, RED	JRETURN JSEND
1	31600257	0.68 5W 10% WW AXLH SL	R82
1	31600263	4K 5W 10% WW AXLH SL	R94



2	31600266	700 5W 10% WW AXLH SL	R97 R98
8	33711812	PIN-M .093 MOLEX PC-MNT	P12 P13 P14 P15 P32 P33 P36 P37
19	33716194	SPADE .250 PC MNT .093	P11 P16 P17 P23 P24 P25 P26 PACH1 PACH2 PDCH1 PDCH2 PHV1 PHV2 PLV1 PLV2 PLV3 PZ0 PZ8 PZ16
2	33717013	3 HDR V SR .100" TIN LK	PFB PFB1
1	33719108	6 HDR V SR .156" TIN	PFRONT
1	70600134	6C .156 STRP SRCON 5"	PREAR
2	71190901	10K15A SNGL 12MM HOR	VR13 VR15
1	71190904	50KB SNGL 12MM HOR	VR8
2	CABL13813	18GA W/CRIMP TERM 73713813	P34 P35
6	JUMPER	????????????????????????????	JP1 JP2 JP3 JP4 JP5 JP6

-----  
 END OF BILL OF MATERIAL REPORT  
 -----