

Chassis: Hammond 1455N2201xx Series
PCB Size 100mm x 100mm

15VA Toroidal Options
TE2253-ND x1 TR1 Amgis L01-6353 15VA/15v+15v Transformer
1295-1028-ND x1 Talema 70053K 15VA/15v+15v Transformer?

25VA Toroidal Options (NOTE: 25VA will not fit 1U Chassis Height)
TE2259-ND x1 TR1 Amgis L01-6363 25VA/15v+15v Transformer
1295-1023-ND x1 Talema 70063K 25VA/15v+15v Transformer

C1: 3300PF with X1 Safety Rating – Vishay VKP332MCQEJ0KR or similar

Snubbers (Optional) C1-4, R1-2
C2, 3 (Snubber Cx) 10nF / 0.01uF EPCOS/TDK Film Cap p/n B32529C0103K289 or similar
C4, 5 (Snubber Cx) 150 nF / 0.15uF EPCOS/TDK Film Cap p/n B32529C0154K189 or similar
R1, 2 - Value TBD: Use Quasimodo Test jig. 1/4W

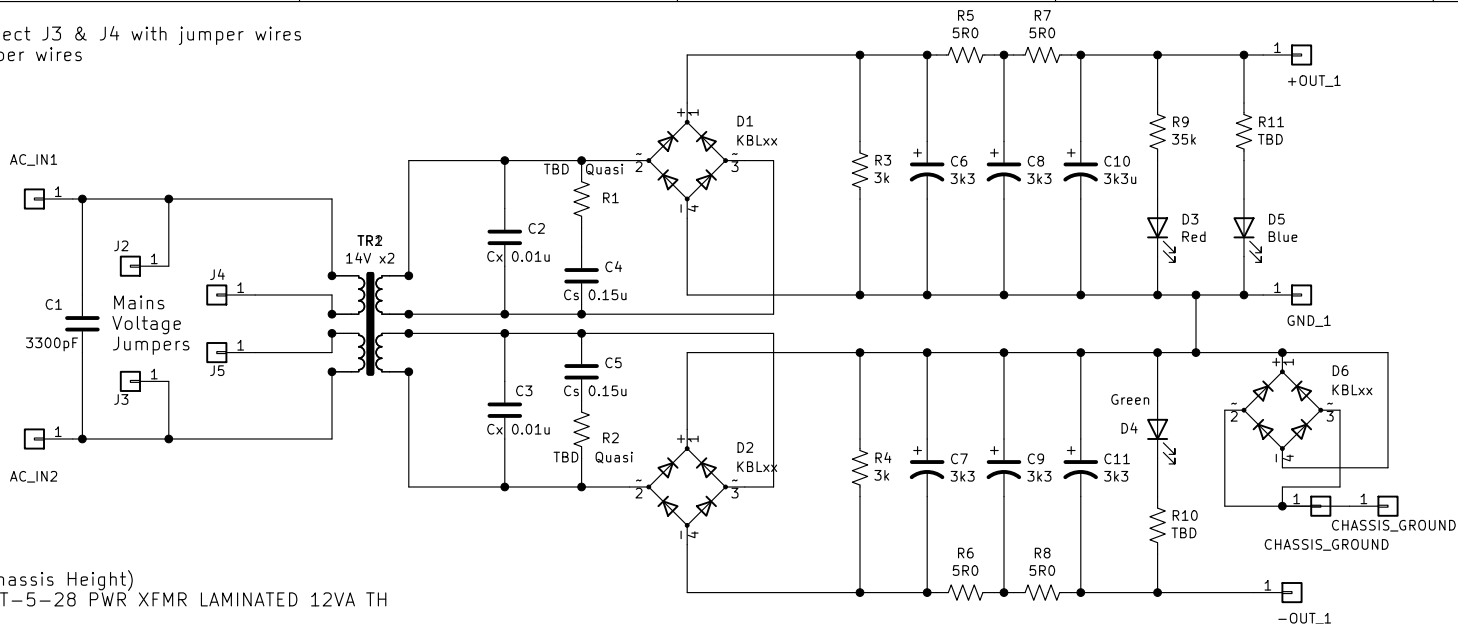
D1, 2, 6: KBL Series Bridge: KBL406 or similar
R 3, 4: Bleeder Resistors: 3k 1W
R 5-8: 4-10R 1W
Pearl 3 (25V caps) C6-11: 3k3 - 4k7 uF, 25V Electrolytic cap. 7.5mm Lead Spacing. 18mm Diameter max. Modushop 1U: 26mm Max Height. Hammond: 40mm Seated Height max.
R 9-11: 20k +/- 5k, 1/4W (1k / volt "rule of thumb" for LED dropper resistor)
D 3-5: 3 or 5MM LED. All blue, or blue for "Power On" LED, red/green for +/- rails.

Connector Options: Wire, Quick Disconnect (QD) Spades: Molex 19708-4013 or similar, or 2 position 5.08mm pitch terminal blocks: Phoenix Contact 1935161 or similar. 3x blocks may be attached together for DC out.

Designed to fit into Modushop Pearl 3 chassis or Hammond Chassis. Fasten PCB to chassis through transformer mount hole using M4 Hardware.

Wire from "Chassis Ground" connection to chassis. Use Lock / Star washer and measure connection from PCB to chassis/earth ground on IEC to ensure connection.

Mounting holes for 10x10 grid hole spacing and M4 hardware for other Chassis options.



Randy Thatcher (rhthatcher) Thatcher DIYAudio

Sheet: /
File: Pearl2 Raw PSU-1.0j.sch

Title: Pearl Phono Raw CRCRC Dual Rail Power Supply

Size: USLetter	Date: 2023-10-11
KiCad E.D.A. eeschema (5.1.7)-1	

Rev: V1.0j
Id: 1/1

Thank you to Nelson Pass, Wayne Colburn, Jim "6L6", and the DIYAudio Community!

Not for commercial use.