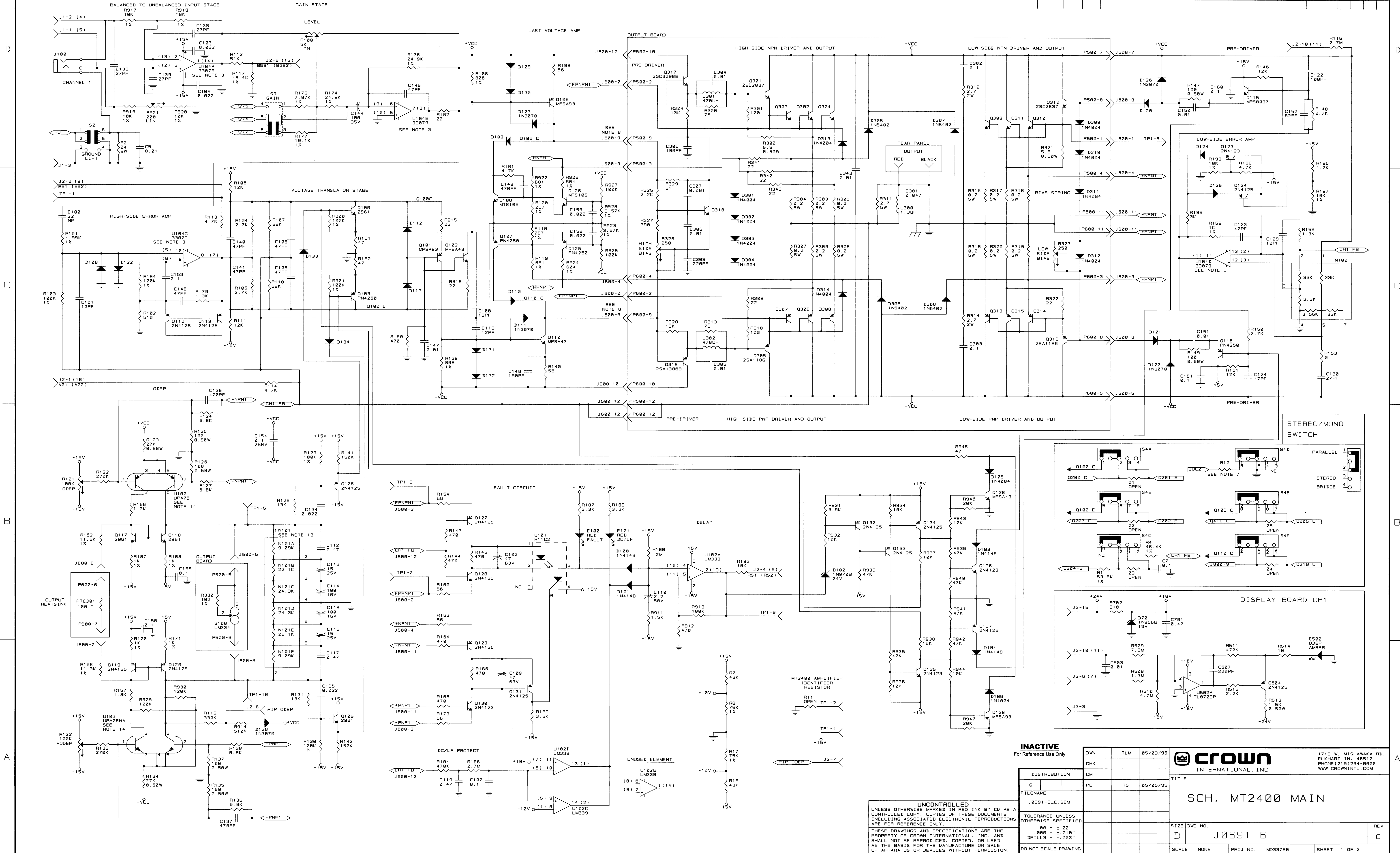



REVISION HISTORY					APPROVED		
E.C.N.	ZONE	REV	DESCRIPTION	DATE	DWN	CHK	CM
95-210		A	C102, C202, C109, C209 WERE 100MF	07/24/95	LCD		TS
96-117		B	REVISED NOTE 15 Q43399-7 WAS REV. A	02/08/96	TLM		TS
00N0090		C	CHANGED R189 TO A10266-3321	02/07/00	JAW	JK	TS



INACTIVE For Reference Use Only		DWN	TLM	05/03/95	 1718 W. MISHAWAKA RD. ELKHART, IN. 46517 PHONE (219) 294-0000 WWW.CROWNINTL.COM
DISTRIBUTION		CM	TS	05/05/95	
FILENAME		PE			TITLE
J0691-6.C.SCM					SCH. MT2400 MAIN
TOLERANCE UNLESS OTHERWISE SPECIFIED					SIZE DWG NO.
0.00 ± 0.02"					D J0691-6
0.00 ± 0.010"					REV
DRILLS - 1.003"					C
DO NOT SCALE DRAWING		SCALE NONE	PROJ. NO. MD33750	SHEET 1 OF 2	

D

C

B

A

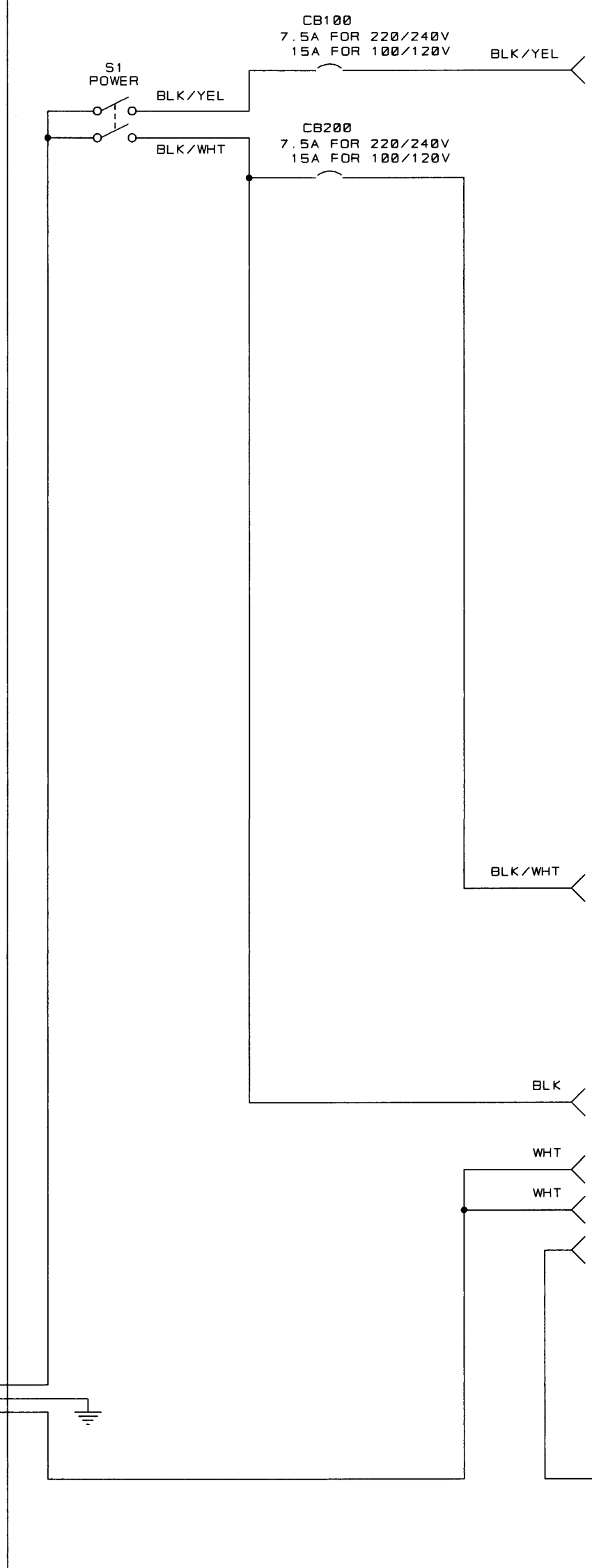
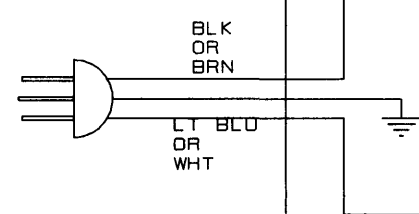
D

C

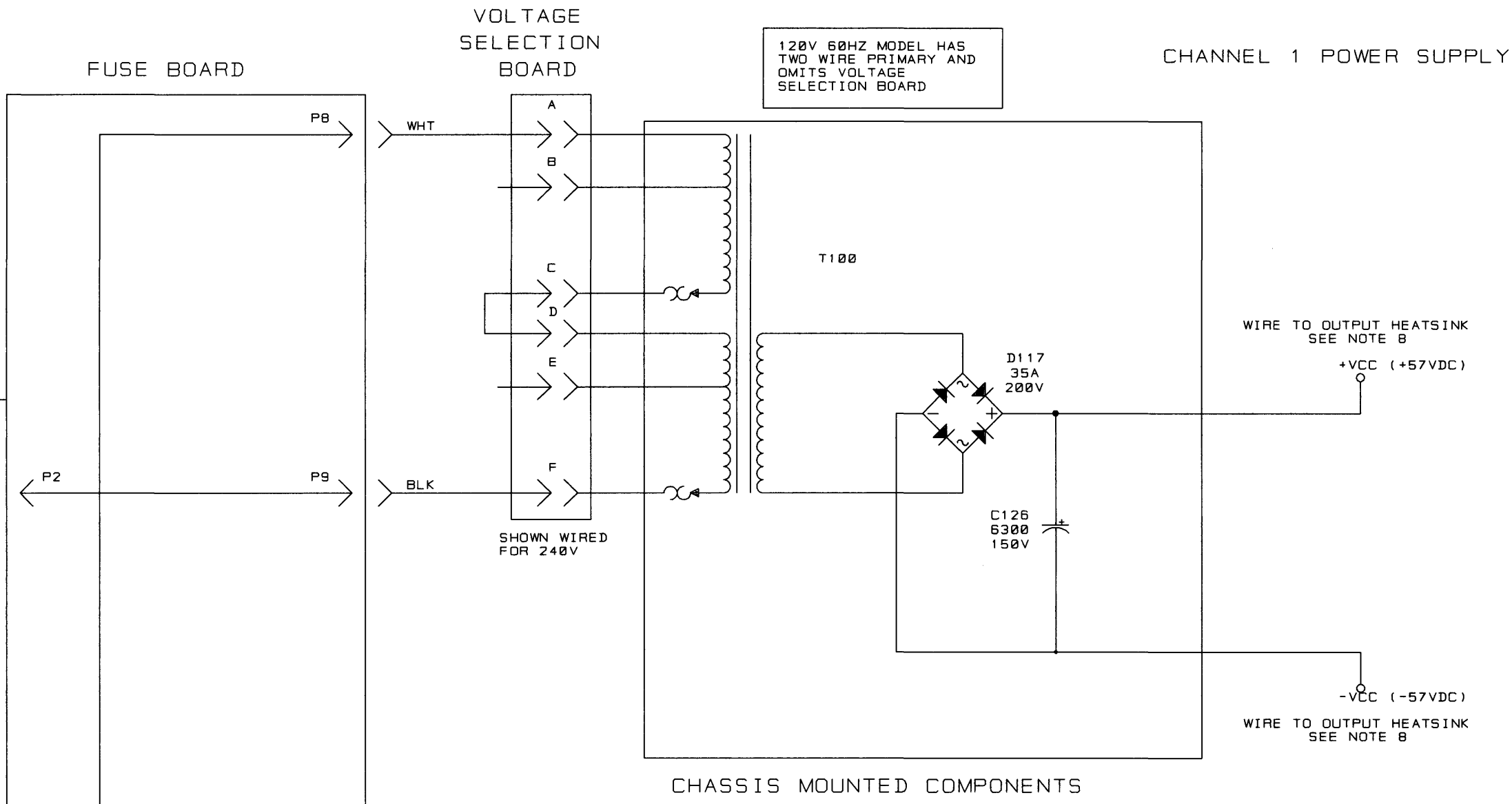
B

A

8 7 6 5 4 3 2 1

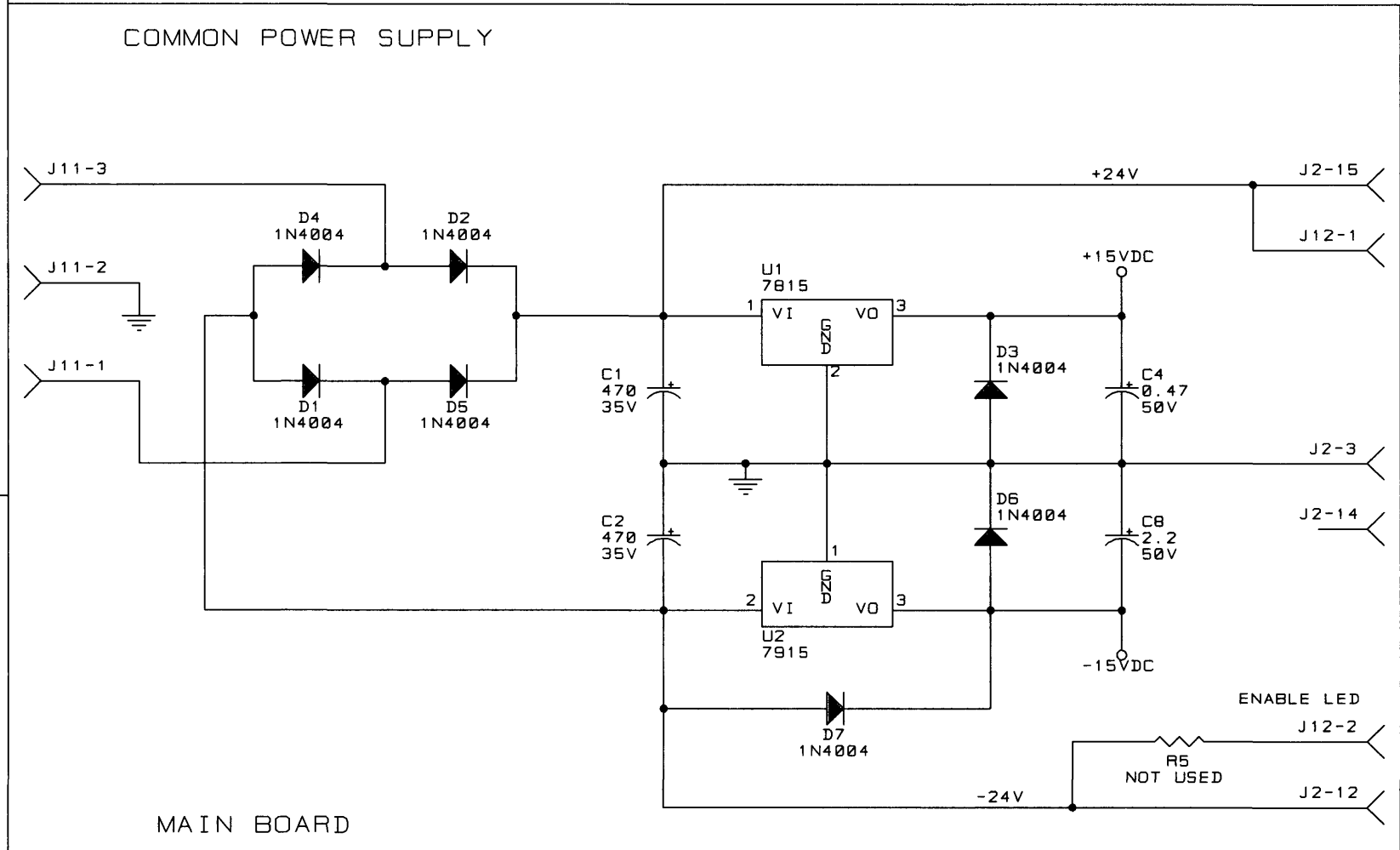
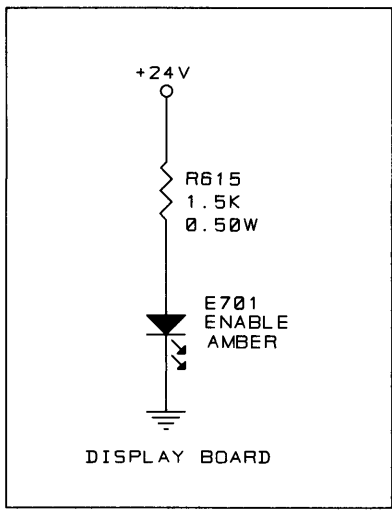


CHASSIS MOUNTED COMPONENTS



CHASSIS MOUNTED COMPONENTS

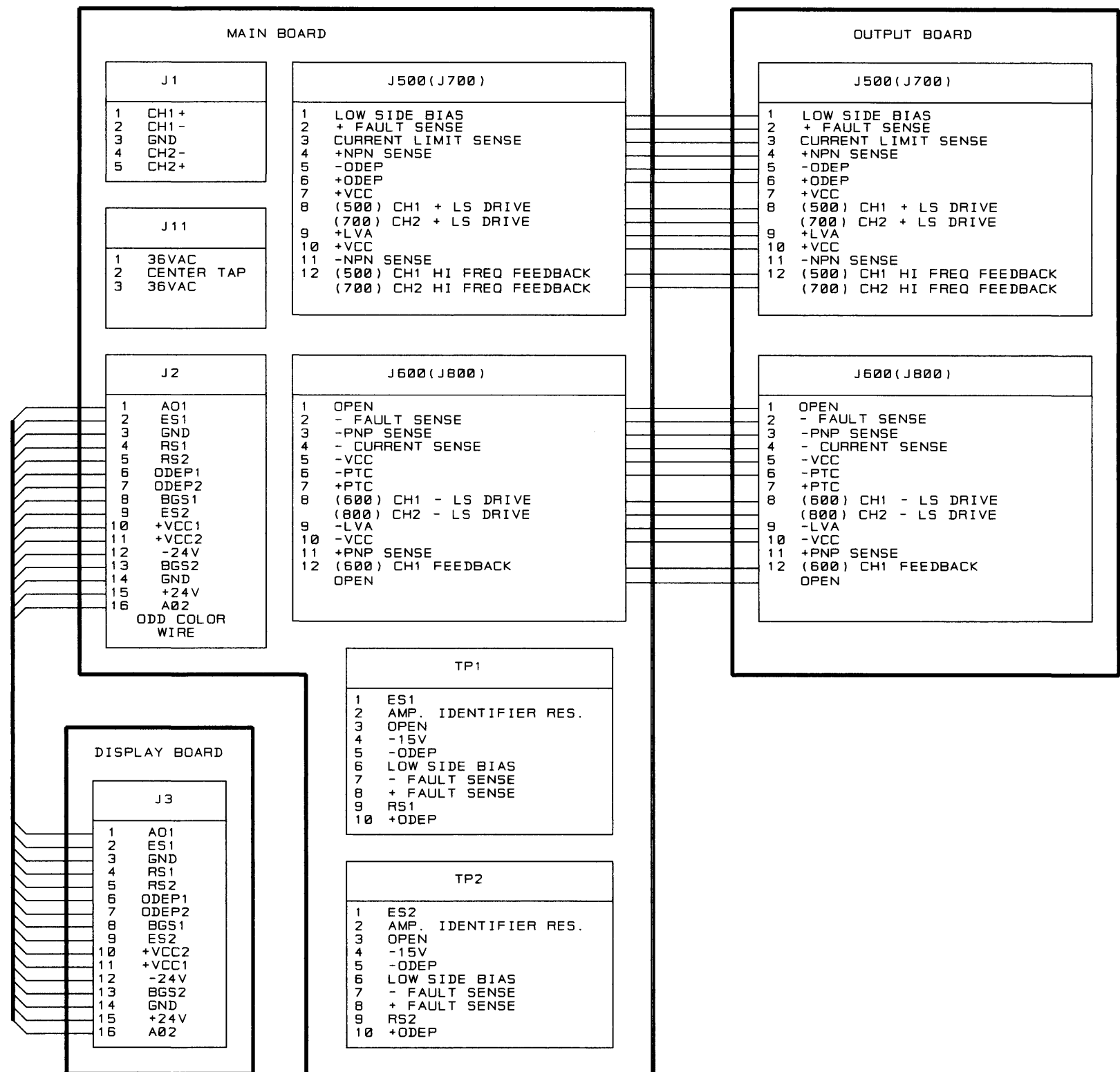
TO T200 ON CHASSIS  
AND CH 2 POWER SUPPLY  
(NOT SHOWN)



MAIN BOARD

CHANNEL 1	
LAST USED	OBSOLETE
C101	111, 120, 125-120, 143
C316	300, 314
D134	105-107, 114-119
D312	300, 309-312
E101	
L302	
N102	100
PTC301	300
Q137	104, 111, 114, 121, 122
Q319	
R199	169, 172, 178, 183, 185, 191, 192
R354	
R942	900-910
U104	

COMMON	
LAST USED	OBSOLETE
C7	3
D7	
R18	6, 9, 11-16
S4	1
U2	



- NOTES :
- ALL RESISTORS ARE IN OHMS, 1/4W, 5% UNLESS OTHERWISE SPECIFIED.
  - ALL CAPACITORS ARE IN MICROFARADS UNLESS OTHERWISE SPECIFIED.
  - VALUES SELECTED AS NEEDED FOR DIFFERENT OP AMP CHARACTERISTICS.
  - CHANNEL 2 IS SHOWN ON SHEET 3. WHEN SHEET 3 IS NOT PRINTED, THEN FOR CHANNEL 2 ADD 100 TO REFERENCE DESIGNATORS. (EXAMPLE : CHANNEL 1 R101 WOULD BE CHANNEL 2 R201.) PARENTHESIS WHEN THEY DIFFER FROM CHANNEL 1. EXCEPTIONS ARE CHAN 1 R2 CORRESPONDS TO CHAN 2 R3, CHAN 1 C5 CORRESPONDS TO CHAN 2 C6, CHAN 1 J500 CORRESPONDS TO CHAN 2 J700, AND CHAN 1 J600 CORRESPONDS TO CHAN 2 J800. CHAN 1 TP1 CORRESPONDS TO CHAN 2 TP2.
  - ALL DIODES ARE 1N4148 UNLESS OTHERWISE SPECIFIED.
  - ON J500 AND J700 THE STRIPED WIRE GOES TO PIN 12 OF THE BOARD AND THE PIN NUMBERS MOLDED ON THE CABLE SOCKET ARE REVERSED FROM THE PIN NUMBERS ON THE BOARD AND THE SCHEMATIC.
  - STANDARD UNIT HAS R10 OPEN. INSTALL JUMPER IN R10 TO DISABLE CHANNEL 2 IOC LIGHT IN PARALLEL MONO MODE.
  - POWER SUPPLY VOLTAGES SHOWN UNDER NO LOAD/NO SIGNAL CONDITIONS.
  - CHANNEL 2 PRE-DRIVER BASES LOOP THROUGH STEREO-MONO SWITCH S100, SECTIONS E AND F.
  - T100 AND T200 INCLUDES INTERNAL THERMAL SWITCHES.
  - R330 VALUE DEPENDS ON GRADE OF SENSOR S100 AS FOLLOWS:

GRADE OF SENSOR S100	VALUE OF RESISTOR R330
BLUE	107 OHM 1% 0.25W
GREEN	102 OHM 1% 0.25W
YELLOW	100 OHM 1% 0.25W
  - J12 IS LEFT EMPTY.
  - ALTERNATE 1/4W 1% RESISTORS ARE DESIGNATED AS N101A, N101B ETC.
  - NEC COMPONENTS ARE SHOWN. ALTERNATE TOSHIBA PARTS ARE:  
NPN P/N 2SC3381  
PNP P/N 2SA1349
  - SCHEMATIC APPLIES TO AMPLIFIERS USING MAIN BOARD DB827-4 / MODULE Q43399-7 REV B AND OUTPUT BOARD P10428-2 / MODULE Q43354-2.

INACTIVE  
For Reference Use Only

8 7 6 5 4 3 2 1