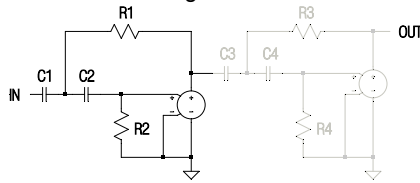


High Pass



6/12 dB (Filter 2 Bypassed) ☒

18/24 dB (Filters in Cascade) ☐

R1

R2

R3

R4

C1 (nf)

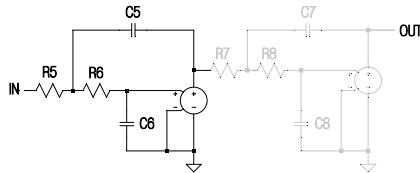
C2 (nf)

C3 (nf)

C4 (nf)

Invert High Pass Phase ☒

Low Pass



6/12 dB (Filter 2 Bypassed) ☒

18/24 dB (Filters in Cascade) ☐

R5

R6

R7

R8

C5 (nf)

C6 (nf)

C7 (nf)

C8 (nf)

You can "open" R1 for 6/18dB filters by setting R1 to a very large value, e.g. [1000000](#).
You can "open" C5 for 6/18dB filters by setting C5 to a very small value, e.g. .0000001. Using 0 (Zero) will result in an error.