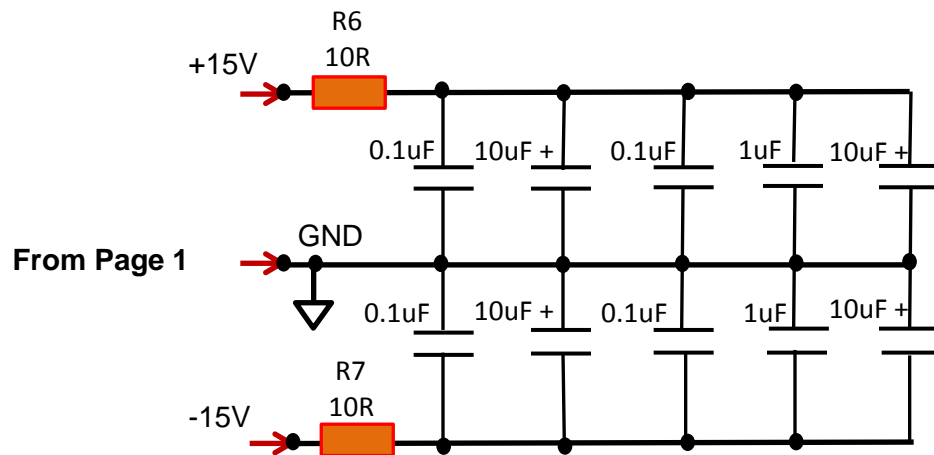
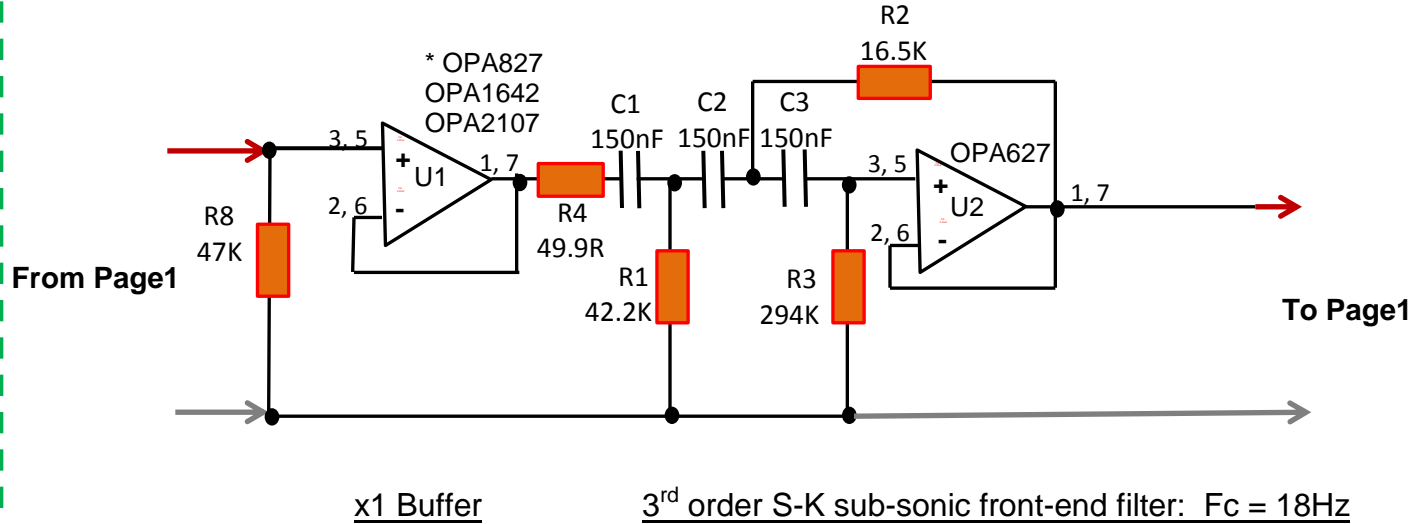


Page 2: DC-coupled Phono Preamp: Front-end daughter board insert with S-K 18dB/oct,18Hz warp/slosh filtering. 1/23/2025



- 10uF = $\pm 15\text{V}$ Low ESR electrolytic
- 1uF = $\pm 15\text{V}$ X7R ceramic
- 0.1uF = X7R ceramic – pins 4 and 8 to GND
- S-K filter $R_s = 0.1\%$ metal film
- S-K filter $C_s = \text{WIMA best-of-5\% MKP2 polypropylene}$