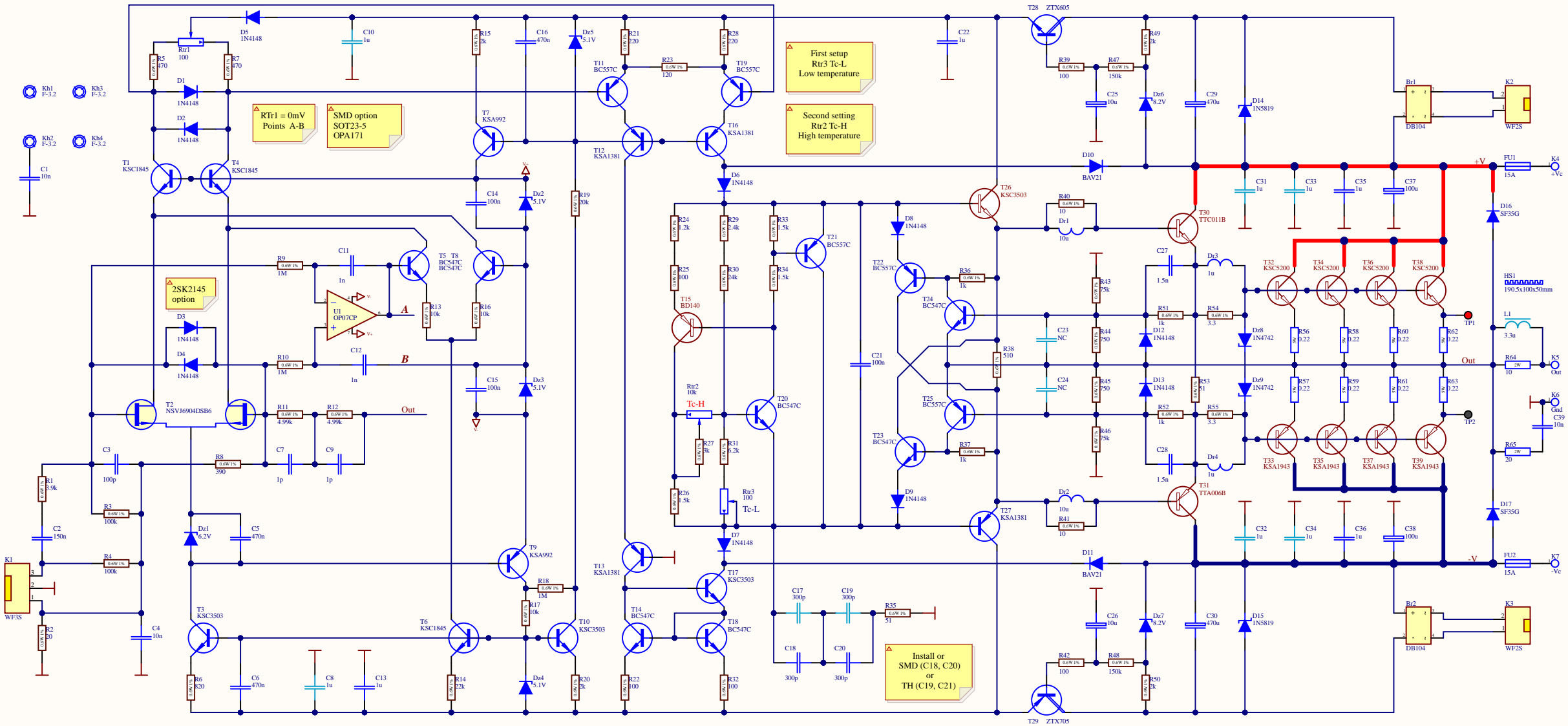


Audio P FET 1-1-3.4 V3.32



Hi-Fest Audio

KSC5200

KSC5200

KSC5200

KSC5200

KSA1943

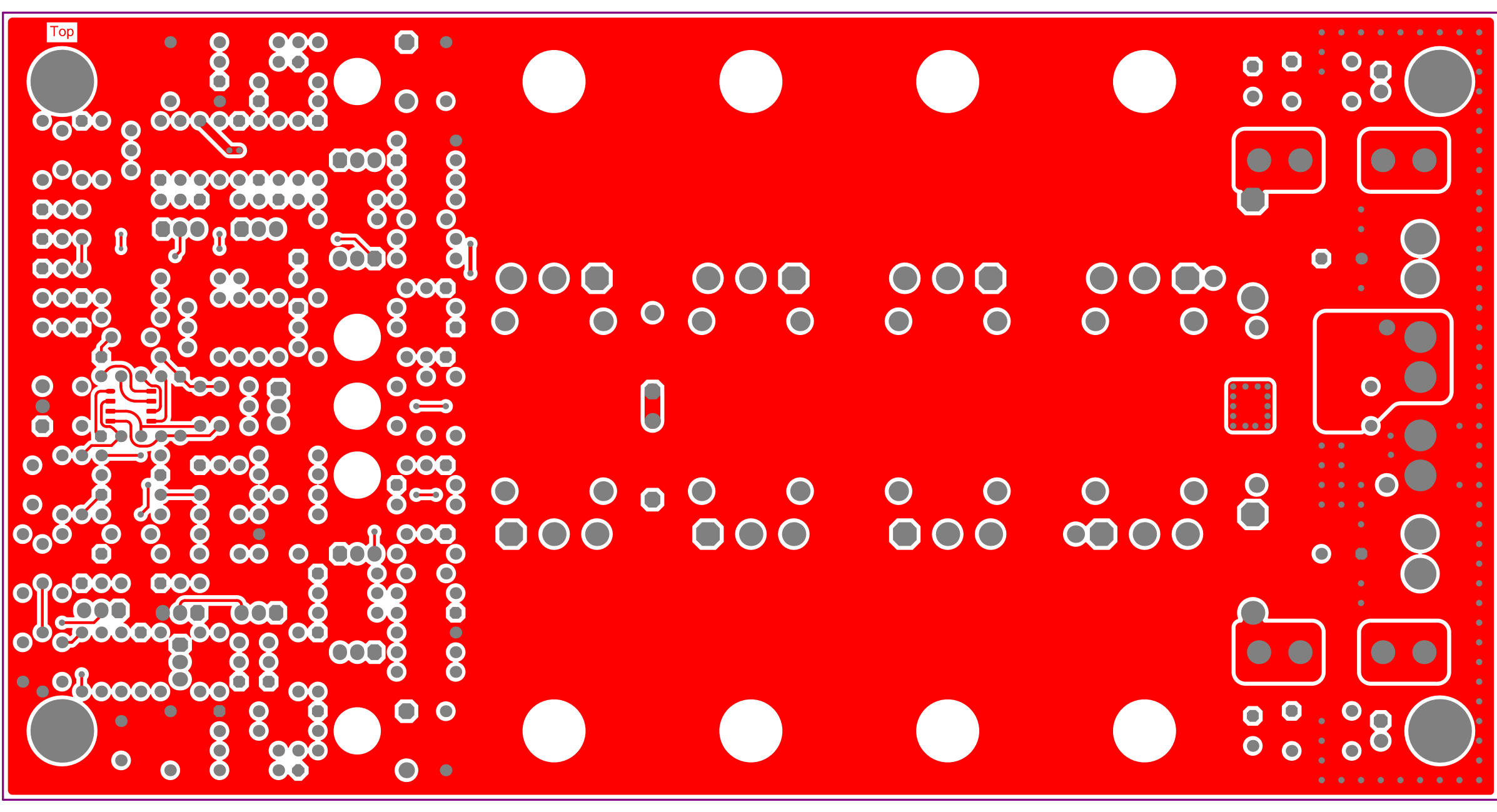
KSA1943

KSA1943

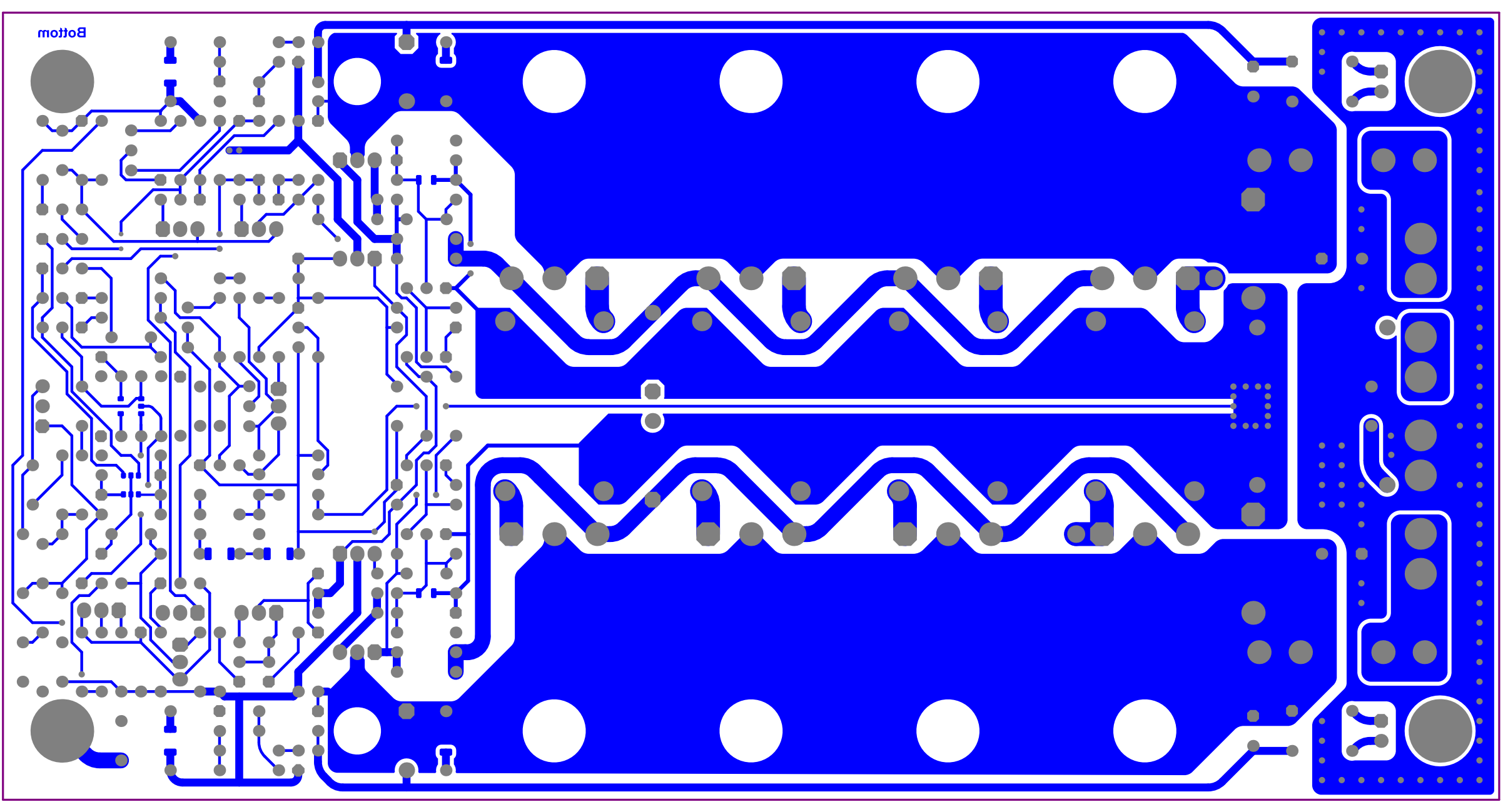
KSA1943

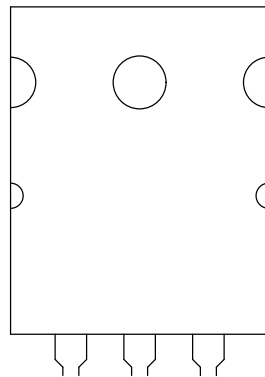
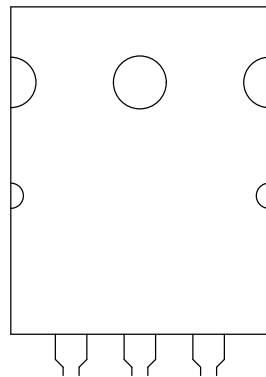
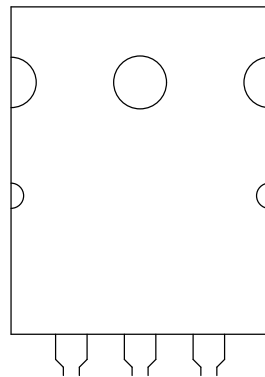
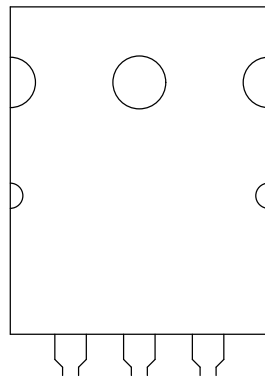
Audio P FET 1-1-3.4 V3.32

Top



Bottom

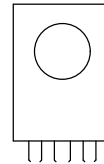




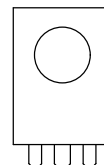
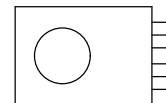
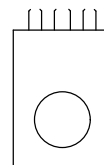
1u



NC



10



NSVJ6904DSB6



300p



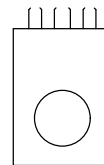
300p



NC



1u



ny

GA G In

Designator	TYPE	Mount Type	Technology	Comment	Description	Supplier 1	Supplier Part Number 1	Quantity
B1, B2	Bridge Rectifiers	TH		DB104	TH 1A 400V	Mouser	563-DB104	2
C1, C39	Capacitor	TH	Polyester (PET)	10n	THRS2 200VAC5mm	Comet	QV 10nF 400V 10% PKS2	1
C2	Capacitor	TH	Polyester (PET)	150n	THMPT 111 (TS05) 100V 5%	Comet	QP 150nF 100V MPT111/T55	1
C3	Capacitor	TH	Ceramic Disc	100p	THTS15 50V NPO 10% 2.5mm	Comet	CD 100pF 50V NPO	1
C4	Capacitor	TH	Polyester (PET)	10n	THMPT 111 (TS05) 100V 10%	Comet	QP 10nF 100V MPT111/T55	1
C5, C6, C16	Capacitor	TH	Ceramic MLCC	470n	THMLCC 50V X7R 10% 5mm	Comet	QML470nF 50V X7R P5	3
C7, C9	Capacitor	TH	Ceramic Disc	1p	THTS15 50V NPO 10% 2.5mm	Comet	CD 100pF 50V NPO	2
C8, C10, C31, C32, C33, C34	Capacitor	SMT	Ceramic MLCC	1u	SMD 1206 100V X7R 5%	Comet	C1206 1.0uF 100V X7R SAMSUNG	6
C11, C12	Capacitor	TH	Polyester (PET)	1n	THMPT 111 (TS05) 100V 10%	Comet	QP 1nF 100V MPT111/T55	2
C13, C22, C35, C36	Capacitor	TH	Polyester (PET)	1u	THMKS04 63VAC 7.5mm	Comet	QV 1.0uF 100V 10% MKS4	4
C14, C15, C21	Capacitor	TH	Polyester (PET)	100n	THMPT 111 (TS05) 100V 10%	Comet	QP 100nF 100V MPT111/T55	3
C17, C19	Capacitor	SMT	Ceramic MLCC	300p	SMD 1206 100V C0G 5%	Mouser	80-C1206C47JRGQR	2
C18, C20	Capacitor	TH	Ceramic MLCC	300p	THMLCC 250V C0G10 % 5mm	Mouser	80-C318C361KAGTA	2
C23, C24	Capacitor	SMT	Ceramic MLCC	NC	SMD 0805 50V X7R 10%	Comet	C0805 1.0nF 50V X7R SAMSUNG	2
C25, C26	Capacitor	TH	Aluminum	10u	100V 4Q 2000hV +105°C	Comet	CE 10uF 100V 105C Fujicon	2
C27, C28	Capacitor	TH	Ceramic MLCC	1.5n	THMLCC 100V X7R 10% 5mm	Comet	QML 1.0nF 100V X7R P5	2
C29, C30	Capacitor	TH	Aluminum Low ESR	470u	25V 0.23Q 2000hV +105°C	Comet	CE 470uF 25V LOW ESR Fujicon	2
C37, C38	Capacitor	TH	Aluminum	100u	100V 2000hV +105°C	Comet	CE 100uF 100V 105C	2
C7	Capacitor	SMT	Ceramic MLCC	4.7u	SMD 0805 50V X5R 10%	Comet	C0805 4.7uF 50V X5R SAMSUNG	2
D1, D2, D3, D4, D5, D6, D7, D8, D9, D12, D13	Switching Diode	TH	S	1N4148	THDC05 75V 0.15A 4nS 4p	Mouser	512-1N4148TR	11
D10, D11	Switching Diode	TH	S	BAV21	THDC05 250V 0.25A 50nS 1.5p	Mouser	771-BAV21,133	2
D14, D15	Power Diode	TH	Schottky	1N5819	DO41 1A 40V Schottky	Mouser	511-1N5819	2
D16, D17	Power Diode	TH	Ultra Fast	9F35G	DO201 3A 300V 35nS	Mouser	821-SF35GR0	2
D1, D2	Axial	TH		10u	1.88Q 0.17A D2.5x4mm	Comet	Q10uH CECS	2
D3, D4	Axial	TH		1u	0.29Q 0.425A D2.5x4mm	Comet	Q1.0uH CECS	2
Dz1	Zener Diode	TH		6.2V	6.2V 0.5W	Comet	BZ55/79/C0V2 MBR	1
Dz2, Dz3, Dz4, Dz5	Zener Diode	TH		5.1V	5.1V 0.5W	Comet	BZ55/79/C5V1 MBR	4
Dz6, Dz7	Zener Diode	TH		8.2V	8.2V 0.5W	Comet	BZ55/79/C8V2 MBR	2
Dz8, Dz9	Zener Diode	TH		1N4742	12V 1W	Comet	1N4742/BZ285C12 MBR	2
FU1, FU2	Fuse	TH		15A	20x5mm		FS02	2
HS1	Heat Sink	TH		190.5x100x50mm	INDEL A6023/10 1.23K/W	Comet	HSINK A6023/10	1
K1	Wire to Board	TH		VF3S	2.54mm 3A/250V	Comet	VF3S	1
K2, K3	Wire to Board	TH		VF2S	2.54mm 3A/250V	Comet	VF2S	2
K4	Solder Terminal Male	TH		+Vc	6.3x0.8mm 20A 500V AC	Mouser	534-1287	1
K5	Solder Terminal Male	TH		Out	6.3x0.8mm 20A 500V AC	Mouser	534-1287	1
K6	Solder Terminal Male	TH		Gnd	6.3x0.8mm 20A 500V AC	Mouser	534-1287	1
K7	Solder Terminal Male	TH		-Vc	6.3x0.8mm 20A 500V AC	Mouser	534-1287	1
L1	Inductors	SMT	Power Shielded	3.3u	30A 6.8mQ 13.5x12.8x6.5mm	Comet	CL3 3uH SMH 12065	1
R1	Resistor	TH	Metal Film	3.9k	THMetal 0.6W 1% 250V	Comet	RV6MF 1.0K 1%	1
R2	Resistor	TH	Metal Film	20	THMetal 0.6W 1% 250V	Comet	RV6MF 1.0K 1%	1
R3, R4	Resistor	TH	Metal Film	100k	THMetal 0.6W 1% 250V	Comet	RV6MF 1.0K 1%	2
R5, R7	Resistor	TH	Metal Film	470	THMetal 0.6W 1% 250V	Comet	RV6MF 1.0K 1%	2
R6	Resistor	TH	Metal Film	820	THMetal 0.6W 1% 250V	Comet	RV6MF 1.0K 1%	1
R8	Resistor	TH	Metal Film	390	THMetal 0.6W 1% 250V	Comet	RV6MF 1.0K 1%	1
R9, R10, R18	Resistor	TH	Metal Film	1M	THMetal 0.6W 1% 250V	Comet	RV6MF 1.0K 1%	3
R11, R12	Resistor	TH	Metal Film	4.99k	THMetal 0.6W 1% 250V	Comet	RV6MF 1.0K 1%	2
R13, R16, R17	Resistor	TH	Metal Film	10k	THMetal 0.6W 1% 250V	Comet	RV6MF 1.0K 1%	3
R14	Resistor	TH	Metal Film	22k	THMetal 0.6W 1% 250V	Comet	RV6MF 1.0K 1%	1
R15, R20, R49, R50	Resistor	TH	Metal Film	2k	THMetal 0.6W 1% 250V	Comet	RV6MF 1.0K 1%	4
R19	Resistor	TH	Metal Film	20k	THMetal 0.6W 1% 250V	Comet	RV6MF 1.0K 1%	1
R21, R28	Resistor	TH	Metal Film	220	THMetal 0.6W 1% 250V	Comet	RV6MF 1.0K 1%	2
R22, R25, R32, R39, R42	Resistor	TH	Metal Film	100	THMetal 0.6W 1% 250V	Comet	RV6MF 1.0K 1%	5
R23	Resistor	TH	Metal Film	120	THMetal 0.6W 1% 250V	Comet	RV6MF 1.0K 1%	1
R24	Resistor	TH	Metal Film	1.2k	THMetal 0.6W 1% 250V	Comet	RV6MF 1.0K 1%	1
R26, R33, R34	Resistor	TH	Metal Film	1.5k	THMetal 0.6W 1% 250V	Comet	RV6MF 1.0K 1%	3
R27	Resistor	TH	Metal Film	3k	THMetal 0.6W 1% 250V	Comet	RV6MF 1.0K 1%	1
R29	Resistor	TH	Metal Film	2.4k	THMetal 0.6W 1% 250V	Comet	RV6MF 1.0K 1%	1
R30	Resistor	TH	Metal Film	24k	THMetal 0.6W 1% 250V	Comet	RV6MF 1.0K 1%	1
R31	Resistor	TH	Metal Film	6.2k	THMetal 0.6W 1% 250V	Comet	RV6MF 1.0K 1%	1
R35, R53	Resistor	TH	Metal Film	51	THMetal 0.6W 1% 250V	Comet	RV6MF 1.0K 1%	2
R36, R37, R51, R52	Resistor	TH	Metal Film	1k	THMetal 0.6W 1% 250V	Comet	RV6MF 1.0K 1%	4
R38	Resistor	TH	Metal Film	510	THMetal 0.6W 1% 250V	Comet	RV6MF 1.0K 1%	1
R40, R41	Resistor	TH	Metal Film	10	THMetal 0.6W 1% 250V	Comet	RV6MF 1.0K 1%	2
R43, R46	Resistor	TH	Metal Film	75k	THMetal 0.6W 1% 250V	Comet	RV6MF 1.0K 1%	2
R44, R45	Resistor	TH	Metal Film	750	THMetal 0.6W 1% 250V	Comet	RV6MF 1.0K 1%	2
R47, R48	Resistor	TH	Metal Film	150k	THMetal 0.6W 1% 250V	Comet	RV6MF 1.0K 1%	2
R54, R55	Resistor	TH	Metal Film	3.3	THMetal 0.6W 1% 250V	Comet	RV6MF 1.0K 1%	2
R56, R57, R58, R59, R60, R61, R62, R63	Resistor	TH	Cement	0.22	THCement 5W 5% 350V	Comet	RSWCEM 0.10R	8
R64	Resistor	TH	Carbon	10	THCarbon 2W 5% 250V	Comet	R2WCF 1.0K	1
R65	Resistor	TH	Carbon	20	THCarbon 2W 5% 250V	Comet	R2WCF 1.0K	1
Rtr1, Rtr3	Trimmer	TH	Cermet Multiturn	100	3296W 0.5V/25 Turns	Mouser	652-3296W-1-100LF	2
Rtr2	Trimmer	TH	Cermet Multiturn	10k	3296W 0.5V/25 Turns	Mouser	652-3296W-1-100LF	1
T1, T4, T6	BJT <250V	TH	npn	KSC1845	120V 50mA 110MHz 1.6pF/30V	Mouser	512-KSC1845FTA	3
T2	JFET	SMT	Dual n	NS/6904DSB6	20-40mA 40mS 2.3pF/25V	Mouser	863-NSUB904DSB6T1G	1
T3, T10, T17	BJT <250V	TH	npn	KSC3503	300V 0.1A 150MHz 2.6pF/30V	Mouser	512-KSC3503DSU	3
T5, T8, T14, T18, T20, T23, T24	BJT <250V	TH	npn	BC547C	45V 0.1A 300MHz 3.5pF/10V	Mouser	BC547C	7
T7, T9	BJT <250V	TH	pnp	KS9692	120V 50mA 100MHz 2.5pF/30V	Mouser	512-KS9692FBU	2
T11, T19, T21, T22, T25	BJT <250V	TH	pnp	BC557C	45V 0.1A 150MHz 3.5pF/10V	Comet	BC557C	5
T12, T13, T16	BJT <250V	TH	pnp	KSA1381	300V 0.1A 150MHz 3.1pF/30V	Mouser	512-KSA1381ESTU	3
T15	BJT <250V	TH	pnp	BD140	80V 1.5A 50MHz (BD139)	Mouser	511-BD140-16	1
T26	BJT <250V	TH	npn	KSC3503	300V 0.1A 150MHz 2.6pF/30V	Mouser	512-KSC3503DSU	1
T27	BJT <250V	TH	pnp	KSA1381	300V 0.1A 150MHz 3.1pF/30V	Mouser	512-KSA1381ESTU	1
T28	BISSDarlington	TH	npn	ZTX805	Darlington 160V 1A 150MHz 15pF/10V	Mouser	522-ZTX805	1
T29	BISSDarlington	TH	pnp	ZTX705	Darlington 120V 1A 160MHz 15pF/10V	Mouser	522-ZTX705	1
T30	BJT <250V	TH	npn	TT1C011B	230V 1.5A 100MHz 20pF/10V (TTA006B)	Mouser	757-TT1C011BQ	1
T31	BJT <250V	TH	pnp	TTA006B	230V 1A 70MHz 30pF/10V (TT1C006B)	Mouser	757-TTA006BQ	1
T32, T34, T36, T38	BJT <250V	TH	npn	KSC5200	230V 15A 30MHz 200pF/10V	Mouser	512-25C5200TU	4
T33, T35, T37, T39	BJT <250V	TH	pnp	KSA1943	250V 15A 30MHz 360pF/10V	Mouser	512-25A19430TU	4
TP1	Test Point Loop	TH		TP Red	Test Point TH Miniature Red	Comet	5000	1
TP2	Test Point Loop	TH		TP Black	Test Point TH Miniature Black	Comet	5001	1
U1	Op Amp	TH	Precision BJT	OP07CP	0.15mV/6nA 0.6MHz 0.3V/uS 6-36V	Mouser	595-OP07CP	1