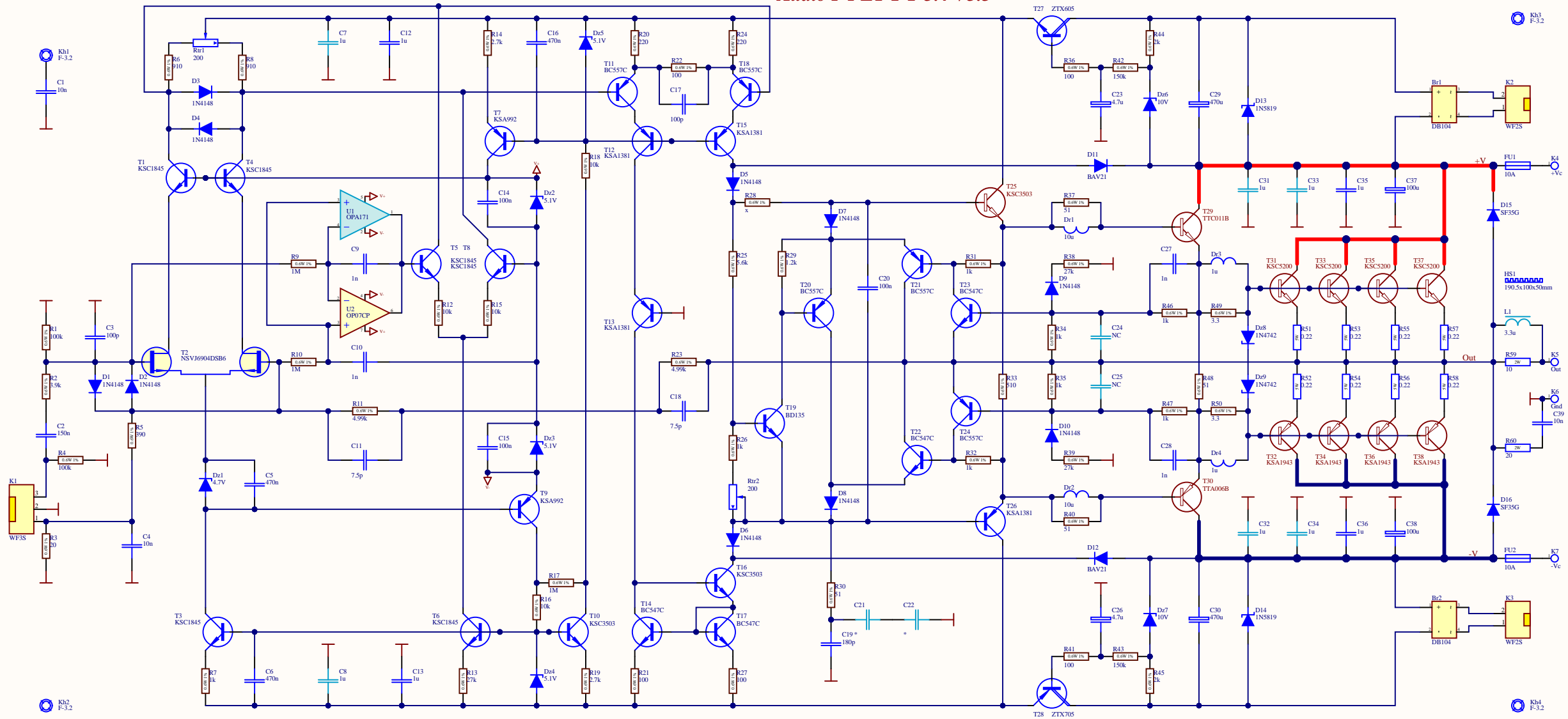
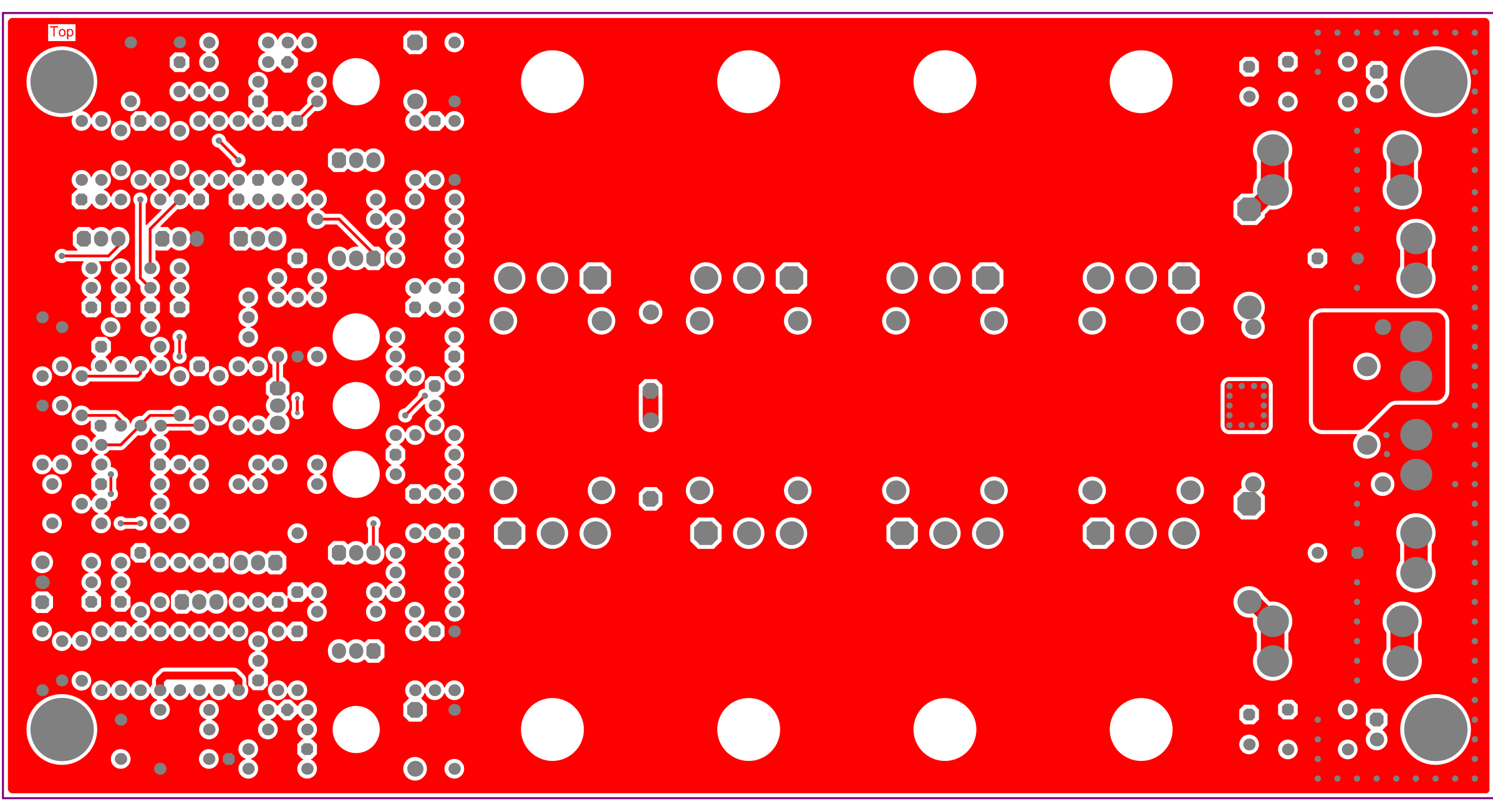


# Audio P FET 1-1-3.4 V3.3





Top

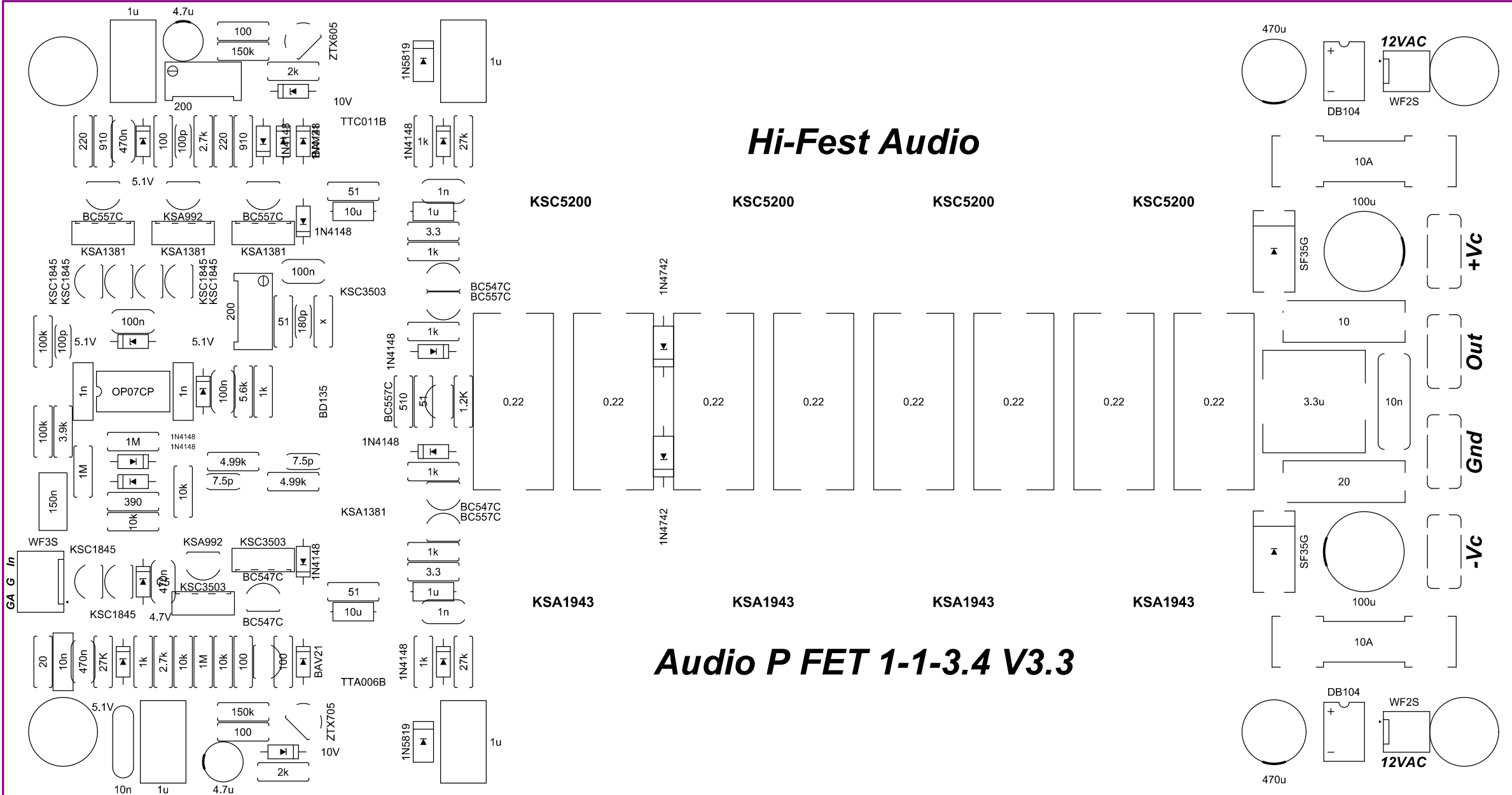


Bottom

+Vc

-Vc

G



+Vc

Out

Gnd

-Vc

1u

1u

1u

1u

NC

NC

1u

OPA171  
1 1

1u

GA G In

Designator	Comment	TYPE	Technology	Mount Type	Description	Package	Part Number	Supplier 1	Supplier Part Number 1	Quantity
B1, B2		Bridge Rectifiers		TH	TH 1A 400V	DIL6-4	DB104	Mouser	583-DB104	2
C1		Capacitor	Ceramic Disc HV	TH	TH TS15 500V Y5P 10% 5mm	Disc		Comet		1
C2		Capacitor	Polyester (PET)	TH	TH MPT 111 (TS 05) 100V 5%	Box mini	012XF2A154KA850001R	Comet	CP 150nF 100V MPT111/TS5	1
C3, C17		Capacitor	Ceramic Disc	TH	TH TS15 50V NPO 10% 2.5mm	Disc	004ST1H101JSBS2541	Comet	CD 100pF 50V NPO	2
C4		Capacitor	Polyester (PET)	TH	TH MPT 111 (TS 05) 100V 10%	Box mini	012XF2A103KA850001	Comet	CP 10nF 100V MPT111/TS5	1
C5, C6, C16		Capacitor	Ceramic MLCC	TH	TH MLCC 50V X7R 10% 5mm	Radial Leads P5	008WL1H474KSBB5081R	Comet	CML 470nF 50V X7R P5	3
C7, C8, C31, C32, C33, C34		Capacitor	Ceramic MLCC SMT		SMD 1206 100V X7R 5%	1206	CL31B105KCHSNNE	Comet	C1206 1.0uF 100V X7R SAMSUNG	6
C9, C10		Capacitor	Polyester (PET)	TH	TH MPT 111 (TS 05) 100V 10%	Box mini	012XH2A102KA850001R	Comet	CP 1nF 100V MPT111/TS5	2
C11, C18		Capacitor	Ceramic Disc	TH	TH TS15 50V NPO 10% 2.5mm	Disc	004ST1H101JSBS2541	Comet	CD 100pF 50V NPO	2
C12, C13, C35, C36		Capacitor	Polyester (PET)	TH	TH MKS 04 63VAC 7.5mm	Box	MKS4D041002F00KSSD	Comet	CW 1.0uF 100V 10% MKS4	4
C14, C15, C20		Capacitor	Ceramic MLCC	TH	TH MLCC 50V X7R 10% 5mm	Radial Leads P5	008WL1H104KSBB5081R	Comet	CML 100nF 50V X7R P5	3
C19		Capacitor	Ceramic Disc	TH	TH TS15 50V NPO 10% 2.5mm	Disc	004ST1H101JSBS2541	Comet	CD 100pF 50V NPO	1
C21, C22		Capacitor	Ceramic MLCC SMT		SMD 1206 100V C0G 5%	1206		Comet		2
C23, C26		Capacitor	Aluminum Low ESR	TH	100V 4Q 2000h/+105°C	D5x11mm	TM2A4R7M-RBD11	Comet	CE 4.7uF 100V LOW ESR-Fujicon	2
C24, C25		Capacitor	Ceramic MLCC SMT		SMD 0805 50V X7R 10%	0805	CL21B102KBANNNC	Comet	C0805 1.0nF 50V X7R SAMSUNG	2
C27, C28		Capacitor	Ceramic MLCC	TH	TH MLCC 100V X7R 10% 5mm	Radial Leads P5	008WL2A102KSBB5081R	Comet	CML 1.0nF 100V X7R P5	2
C29, C30		Capacitor	Aluminum Low ESR	TH	25V 0.23Q 2000h/+105°C	D8x16mm	TM1E471M-RBF16	Comet	CE 470uF 25V LOW ESR-Fujicon	2
C37, C38		Capacitor	Aluminum	TH	100V 2000h/+105°C	D10x20mm	RK2A101M-RBG20	Comet	CE 100uF 100V 105C	2
C39		Capacitor	Polyester (PET)	TH	TH MPT(TS 02) 250V 10%	Coated		Comet		1
D1, D2, D3, D4, D5, D6, D7, D8, D9, D10		Switching Diode	Si	TH	TH DO35 75V 0.15A 4nS 4p	DO35	1N4148TR	Mouser	512-1N4148TR	10
D11, D12		Switching Diode	Si	TH	TH DO35 250V 0.25A 50nS 1.5p	DO35	BAV21, 133	Mouser	771-BAV21, 133	2
D13, D14		Power Diode	Schottky	TH	DO41 1A 40V Schottky	DO41	1N5819	Mouser	511-1N5819	2
D15, D16		Power Diode	Ultra Fast	TH	DO201 3A 300V 35nS	DO201	SF35GR0	Mouser	821-SF35GR0	2
Dr1, Dr2		Axial		TH	1.88Q 0.17A D2 5x4mm	D2 5x4mm	CECS-823465NP	Comet	CL10uH CECS	2
Dr3, Dr4		Axial		TH	0.29Q 0.425A D2 5x4mm	D2 5x4mm	CECS-817386NP	Comet	CL1.0uH CECS	2
Dz1		Zener Diode		TH	4.7V 0.5W	DO35				1
Dz2, Dz3, Dz4, Dz5		Zener Diode		TH	5.1V 0.5W	DO35				4
Dz6, Dz7		Zener Diode		TH	10V 0.5W	DO35				2
Dz8, Dz9		Zener Diode		TH	12V 1W	DO41		Comet		2
FU1, FU2		Fuse		TH	20x5mm 10A					2
HS1		Heat Sink		TH	INDEL A6023/10 1.23K/W	190.5x100x50mm	A6023/10	Comet	HSINK A6023/10	1
K1		Wire to Board		TH	2.54mm 3A/250V		CL3103PTV00	Comet	WF35	1
K2, K3		Wire to Board		TH	2.54mm 3A/250V		CL3102PTV00	Comet	WF25	2
K4		+Vc Solder Terminal Male		TH	6.3 x 0.8mm 20A 500V AC	6.3 x 0.8mm	1287	Mouser	534-1287	1
K5		Out Solder Terminal Male		TH	6.3 x 0.8mm 20A 500V AC	6.3 x 0.8mm	1287	Mouser	534-1287	1
K6		Gnd Solder Terminal Male		TH	6.3 x 0.8mm 20A 500V AC	6.3 x 0.8mm	1287	Mouser	534-1287	1
K7		-Vc Solder Terminal Male		TH	6.3 x 0.8mm 20A 500V AC	6.3 x 0.8mm	1287	Mouser	534-1287	1
L1		Inductors	Power Shielded	SMT	30A 6.8mQ 13.5x12.8x6.5mm	SMP112065-3R3M	SDI 104R - 101M	Comet	CL3.3uH SMP112065	1
R1, R4		Resistor	Metal Film	TH	TH Metal 0.6W 1% 250V	MF06WS(0.6W)	MFRO06F0102A50	Comet	RW6MF 1.0K 1%	2
R2		Resistor	Metal Film	TH	TH Metal 0.6W 1% 250V	MF06WS(0.6W)	MFRO06F0102A50	Comet	RW6MF 1.0K 1%	1
R3		Resistor	Metal Film	TH	TH Metal 0.6W 1% 250V	MF06WS(0.6W)	MFRO06F0102A50	Comet	RW6MF 1.0K 1%	1
R5		Resistor	Metal Film	TH	TH Metal 0.6W 1% 250V	MF06WS(0.6W)	MFRO06F0102A50	Comet	RW6MF 1.0K 1%	1
R6, R8		Resistor	Metal Film	TH	TH Metal 0.6W 1% 250V	MF06WS(0.6W)	MFRO06F0102A50	Comet	RW6MF 1.0K 1%	2
R7, R26, R31, R32, R34, R35, R46, R47		Resistor	Metal Film	TH	TH Metal 0.6W 1% 250V	MF06WS(0.6W)	MFRO06F0102A50	Comet	RW6MF 1.0K 1%	8
R9, R10, R17		Resistor	Metal Film	TH	TH Metal 0.6W 1% 250V	MF06WS(0.6W)	MFRO06F0102A50	Comet	RW6MF 1.0K 1%	3
R11, R23		Resistor	Metal Film	TH	TH Metal 0.6W 1% 250V	MF06WS(0.6W)	MFRO06F0102A50	Comet	RW6MF 1.0K 1%	2
R12, R15, R16, R18		Resistor	Metal Film	TH	TH Metal 0.6W 1% 250V	MF06WS(0.6W)	MFRO06F0102A50	Comet	RW6MF 1.0K 1%	4
R13, R38, R39		Resistor	Metal Film	TH	TH Metal 0.6W 1% 250V	MF06WS(0.6W)	MFRO06F0102A50	Comet	RW6MF 1.0K 1%	3
R14, R19		Resistor	Metal Film	TH	TH Metal 0.6W 1% 250V	MF06WS(0.6W)	MFRO06F0102A50	Comet	RW6MF 1.0K 1%	2
R20, R24		Resistor	Metal Film	TH	TH Metal 0.6W 1% 250V	MF06WS(0.6W)	MFRO06F0102A50	Comet	RW6MF 1.0K 1%	2
R21, R22, R27, R36, R41		Resistor	Metal Film	TH	TH Metal 0.6W 1% 250V	MF06WS(0.6W)	MFRO06F0102A50	Comet	RW6MF 1.0K 1%	5
R25		Resistor	Metal Film	TH	TH Metal 0.6W 1% 250V	MF06WS(0.6W)	MFRO06F0102A50	Comet	RW6MF 1.0K 1%	1
R28		Resistor	Metal Film	TH	TH Metal 0.6W 1% 250V	MF06WS(0.6W)	MFRO06F0102A50	Comet	RW6MF 1.0K 1%	1
R29		Resistor	Metal Film	TH	TH Metal 0.6W 1% 250V	MF06WS(0.6W)	MFRO06F0102A50	Comet	RW6MF 1.0K 1%	1
R30, R37, R40, R48		Resistor	Metal Film	TH	TH Metal 0.6W 1% 250V	MF06WS(0.6W)	MFRO06F0102A50	Comet	RW6MF 1.0K 1%	4
R33		Resistor	Metal Film	TH	TH Metal 0.6W 1% 250V	MF06WS(0.6W)	MFRO06F0102A50	Comet	RW6MF 1.0K 1%	1
R42, R43		Resistor	Metal Film	TH	TH Metal 0.6W 1% 250V	MF06WS(0.6W)	MFRO06F0102A50	Comet	RW6MF 1.0K 1%	2
R44, R45		Resistor	Metal Film	TH	TH Metal 0.6W 1% 250V	MF06WS(0.6W)	MFRO06F0102A50	Comet	RW6MF 1.0K 1%	2
R49, R50		Resistor	Metal Film	TH	TH Metal 0.6W 1% 250V	MF06WS(0.6W)	MFRO06F0102A50	Comet	RW6MF 1.0K 1%	2
R51, R52, R53, R54, R55, R56, R57, R58		Resistor	Cement	TH	TH Cement 5W 5% 350V	PRW(5W)	PRW05WJ010K800	Comet	RSWCEM 0.10R	8
R59		Resistor	Carbon	TH	TH Carbon 2W 5% 250V	CFR02S(2W)	CFR02SJO102A10	Comet	RZWCF 1.0K	1
R60		Resistor	Carbon	TH	TH Carbon 2W 5% 250V	CFR02S(2W)	CFR02SJO102A10	Comet	RZWCF 1.0K	1
Rtr1, Rtr2		Trimmer	Cermet Multiturn	TH	3296W 0.5W 25 Turns	3296W	3296W-1-100LF	Mouser	652-3296W-1-100LF	2
T1, T3, T4, T5, T6, T8		KSC1845	BJT -250V	npn	TH 120V 50mA 110MHz 1.6pF/30V	TO92	KSC1845F1A	Mouser	512-KSC1845F1A	6
T2		NSVJ6904DSB6	JFET	Dual n	SMT 20-40mA 40mS 2.3pF 25V	SOT23-6	NSVJ6904DSB6T1G	Mouser	863-NSVJ6904DSB6T1G	1
T7, T9		KSA992	BJT -250V	npn	TH 120V 50mA 100MHz 2.5pF/30V	TO92	KSA992FBU	Mouser	512-KSA992FBU	2
T10, T16		KSC3503	BJT -250V	npn	TH 300V 0.1A 150MHz 2.6pF/30V	TO126	KSC3503DSTU	Mouser	512-KSC3503DSTU	2
T11, T18, T20, T21, T24		BC557C	BJT -250V	pnP	TH 45V 0.1A 150MHz 3.5pF/10V	TO92		Mouser		5
T12, T13, T15		KSA1381	BJT -250V	pnP	TH 300V 0.1A 150MHz 3.1pF/30V	TO126	KSA1381ESTU	Mouser	512-KSA1381ESTU	3
T14, T17, T22, T23		BC547C	BJT -250V	npn	TH 45V 0.1A 300MHz 3.5pF/10V	TO92		Mouser		4
T19		BD135	BJT -250V	npn	TH 45V 1.5A 50MHz (BD136)	TO126		Mouser		1
T25		KSC3503	BJT -250V	npn	TH 300V 0.1A 150MHz 2.6pF/30V	TO126	KSC3503DSTU	Mouser	512-KSC3503DSTU	1
T26		KSA1381	BJT -250V	pnP	TH 300V 0.1A 150MHz 3.1pF/30V	TO126	KSA1381ESTU	Mouser	512-KSA1381ESTU	1
T27		ZTX605	BISS Darlington	npn	TH Darlington 160V 1A 150MHz 15pF/10V	E-Line	ZTX605	Mouser	522-ZTX605	1
T28		ZTX705	BISS Darlington	pnP	TH Darlington 120V 1A 160MHz 15pF/10V	E-Line	ZTX705	Mouser	522-ZTX705	1
T29		TT0011B	BJT -250V	npn	TH 230V 1.5A 100MHz 20pF/10V (TTA006B)	TO126	TT0011B,Q	Mouser	757-TT0011BQ	1
T30		TTA006B	BJT -250V	pnP	TH 230V 1A 70MHz 30pF/10V (TTC006B)	TO126	TTA006B,Q	Mouser	757-TTA006BQ	1
T31, T33, T35, T37		KSC5200	BJT -250V	npn	TH 230V 15A 30MHz 200pF/10V	TO264	2SC5200OTU	Mouser	512-2SC5200OTU	1
T32, T34, T36, T38		KSA1943	BJT -250V	pnP	TH 250V 15A 30MHz 360pF/10V	TO264	2SA1943OTU	Mouser	512-2SA1943OTU	4
U1		OPA171	Op Amp	CMOS	SMT 0.25mV 8pA 3MHz 1.5V/uS 2.7-36V RR/O	SOT23-5	OPA171AIDBVR	Mouser	595-OPA171AIDBVR	1
U2		OP07CP	Op Amp	Precision BJT	TH 0.15mV 6nA 0.6MHz 0.3V/uS 6-36V	DIL 8	OP07CP	Mouser	595-OP07CP	1